

(BAYPO1.BAYPO) 21336

AL-625 (FAA)

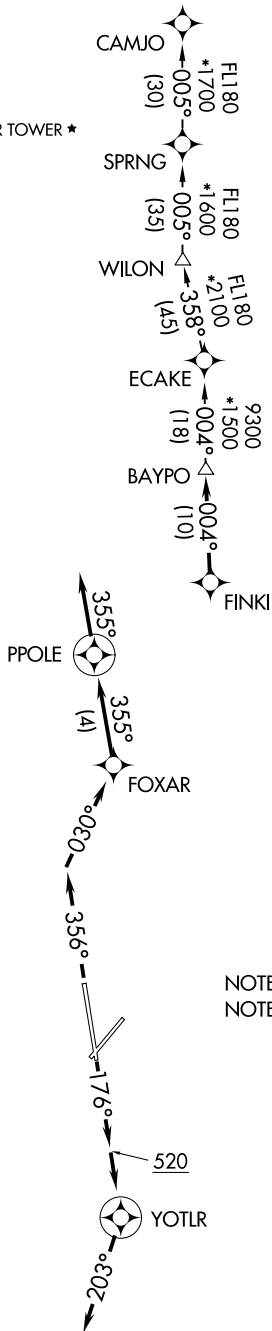
ST PETE-CLEARWATER INTL (PIE)
ST PETERSBURG-CLEARWATER, FLORIDA

BAYPO ONE DEPARTURE (RNAV)

ATIS
 134.5
 CLNC DEL
 120.6 350.2
 GND CON
 121.9 348.6
 ST. PETERSBURG-CLEARWATER TOWER ★
 118.3 (CTAF) 257.8
 TAMPA DEP CON
 125.3 316.05

TOP ALTITUDE:
1600

RNAV 1 - DME/DME/IRU or GPS required.
 RADAR required.



TAKEOFF MINIMUMS

Rwy 4, 22: NA - ATC.
 Rwy 18, 36: Standard with minimum climb
 of 500' per NM to 520.

NOTE: Jets only.

NOTE: WILON TRANSITION for use by aircraft filed
 to Jacksonville area airports only,
 or as assigned by ATC.

NOTE: Chart not to scale.

(NARRATIVE ON FOLLOWING PAGE)

BAYPO ONE DEPARTURE (RNAV)

(BAYPO1.BAYPO) 02DEC21

ST PETERSBURG-CLEARWATER, FLORIDA
ST PETE-CLEARWATER INTL (PIE)

SE-3, 22 FEB 2024 to 21 MAR 2024

SE-3, 22 FEB 2024 to 21 MAR 2024

BAYPO ONE DEPARTURE (RNAV)



DEPARTURE ROUTE DESCRIPTION

TAKEOFF RUNWAY 18: Climb on heading 176° to 520, then direct YOTLR, then on heading 203° or as assigned by ATC, for vectors to FINKI, thence

TAKEOFF RUNWAY 36: Climb on heading 356° to intercept course 030° to FOXAR, then on track 355° to PPOLE, then on track 355°. Expect vectors to FINKI, thence

. . . . on track 004° to BAYPO. Maintain 1600. Expect clearance to filed altitude within ten minutes after departure.

CAMJO TRANSITION (BAYPO1.CAMJO)

WILON TRANSITION (BAYPO1.WILON)

SE-3, 22 FEB 2024 to 21 MAR 2024

SE-3, 22 FEB 2024 to 21 MAR 2024

(ENDED1.ENDED) 21336

AL-625 (FAA)

ST PETE-CLEARWATER INTL (PIE)
ST PETERSBURG-CLEARWATER, FLORIDA

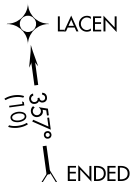
ENDED ONE DEPARTURE (RNAV)

ATIS
134.5
CLNC DEL
120.6 350.2
GND CON
121.9 348.6
ST. PETERSBURG-CLEARWATER TOWER *
118.3 (CTAF) 257.8
TAMPA DEP CON
125.3 316.05

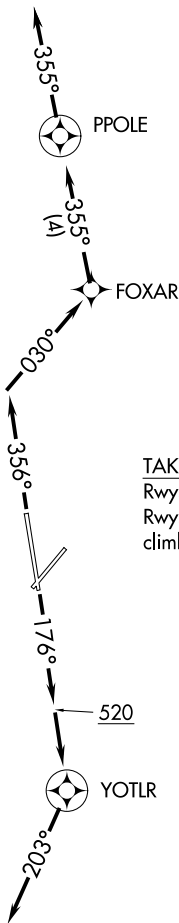
RNAV 1 - DME/DME/IRU or GPS required.

RADAR required

**TOP ALTITUDE:
1600**



NOTE: Jets only.



TAKEOFF MINIMUMS

Rwys 4, 22: NA - ATC.

Rwys 18, 36: Standard with minimum
climb of 500' per NM to 520.

NOTE: Chart not to scale.

(NARRATIVE ON FOLLOWING PAGE)

ENDED ONE DEPARTURE (RNAV)

(ENDED1.ENDED) 02DEC21

ST PETERSBURG-CLEARWATER, FLORIDA
ST PETE-CLEARWATER INTL (PIE)

SE-3, 22 FEB 2024 to 21 MAR 2024

SE-3, 22 FEB 2024 to 21 MAR 2024

ENDE ONE DEPARTURE (RNAV)



DEPARTURE ROUTE DESCRIPTION

TAKEOFF RUNWAY 18: Climb on heading 176° to 520, then direct YOTLR, then on heading 203° or as assigned by ATC, for vectors to ENDED thence

TAKEOFF RUNWAY 36: Climb on heading 356° to intercept course 030° to FOXAR, then on track 355° to PPOLE, then on track 355°. Expect vectors to ENDED, thence

. . . . on track 357° to LACEN. Maintain 1600. Expect clearance to filed altitude within ten minutes after departure.

SE-3, 22 FEB 2024 to 21 MAR 2024

SE-3, 22 FEB 2024 to 21 MAR 2024

(MAEKO1.MAEKO) 21336

AL-625 (FAA)

ST PETE-CLEARWATER INTL (PIE)
ST PETERSBURG-CLEARWATER, FLORIDA

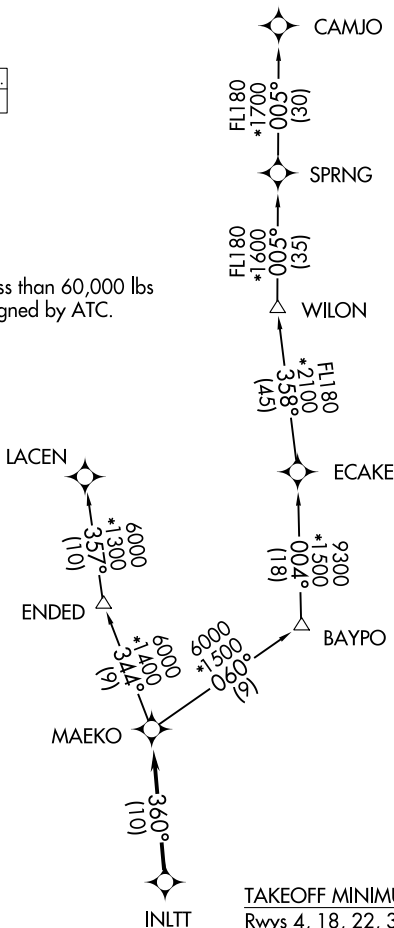
MAEKO ONE DEPARTURE (RNAV)

**TOP ALTITUDE:
1600**

RNAV 1 - DME/DME/IRU or GPS.
RADAR required.

ATIS	134.5
CLNC DEL	120.6 350.2
GND CON	121.9 348.6
ST. PETERSBURG-CLEARWATER TOWER*	118.3 (CTAF) 257.8
TAMPA DEP CON	125.3 316.05

NOTE: For jets less than 60,000 lbs
or as assigned by ATC.



TAKEOFF MINIMUMS
Rwys 4, 18, 22, 36: Standard with minimum climb
of 500' per NM to 520.

(NARRATIVE ON FOLLOWING PAGE)

NOTE: Chart not to scale.

SE-3, 22 FEB 2024 to 21 MAR 2024

SE-3, 22 FEB 2024 to 21 MAR 2024

MAEKO ONE DEPARTURE (RNAV)

(MAEKO1.MAEKO) 02DEC21

ST PETERSBURG-CLEARWATER, FLORIDA
ST PETE-CLEARWATER INTL (PIE)

MAEKO ONE DEPARTURE (RNAV)



DEPARTURE ROUTE DESCRIPTION

TAKEOFF RUNWAY 4: Climb on heading 045° or as assigned by ATC.

Thence

TAKEOFF RUNWAY 18: Climb on heading 176° or as assigned by ATC.

Thence

TAKEOFF RUNWAY 22: Climb on heading 225° or as assigned by ATC.

Thence

TAKEOFF RUNWAY 36: Climb on heading 356° or as assigned by ATC.

Thence

. . . . expect RADAR vectors to INLTT, then on track 360° to MAEKO, maintain 1600, expect clearance to filed altitude within 10 minutes after departure.

CAMJO TRANSITION (MAEKO1.CAMJO)

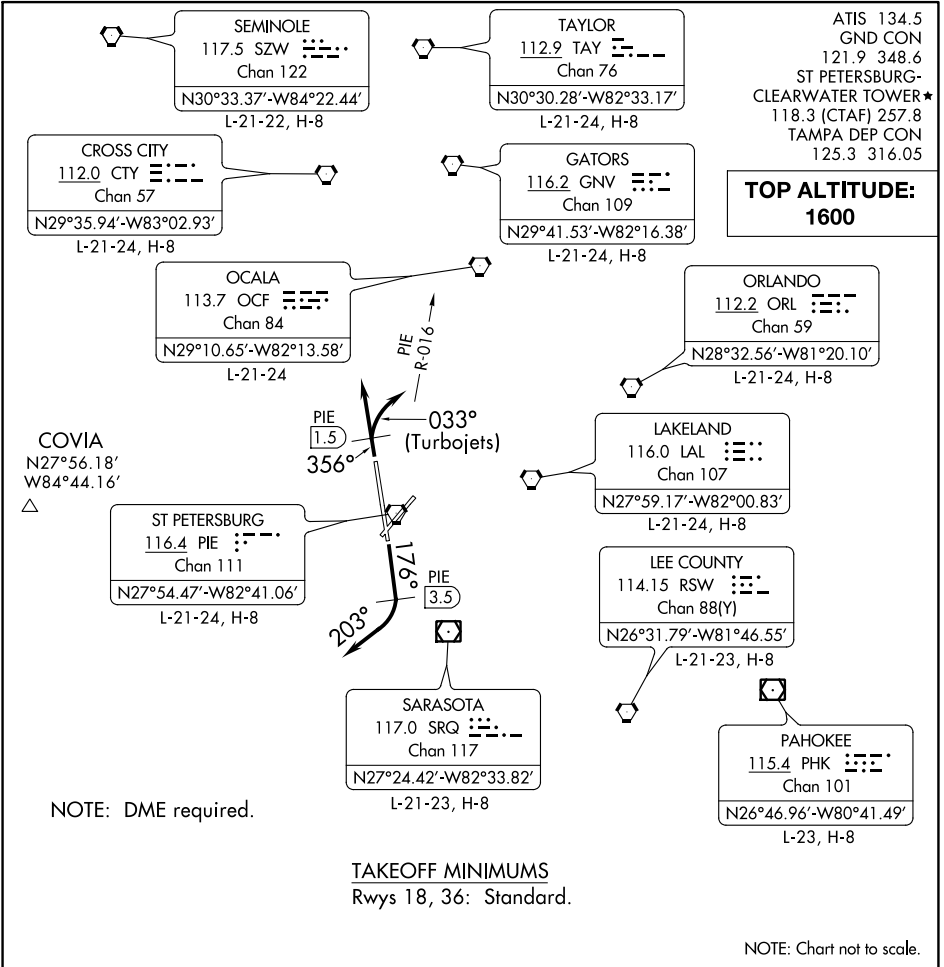
LACEN TRANSITION (MAEKO1.LACEN)

WILON TRANSITION (MAEKO1.WILON)

SE-3, 22 FEB 2024 to 21 MAR 2024

SE-3, 22 FEB 2024 to 21 MAR 2024

ST PETE NINE DEPARTURE



SE-3, 22 FEB 2024 to 21 MAR 2024

SE-3, 22 FEB 2024 to 21 MAR 2024

DEPARTURE ROUTE DESCRIPTION

TAKEOFF RUNWAY 18: Climb heading 176° until PIE VORTAC 3.5 DME, then turn right heading 203° or as assigned for RADAR vectors to filed/assigned route, thence. . . .

TAKEOFF RUNWAY 36: TURBOJETS climb heading 356° until PIE VORTAC 1.5 DME, then turn right heading 033° to intercept and fly outbound on PIE R-016, thence. . . .

ALL OTHERS fly heading 356° or as assigned for RADAR vectors to filed/assigned route. Thence. . . .

. . . .maintain 1600, expect further clearance to filed altitude 10 minutes after departure.