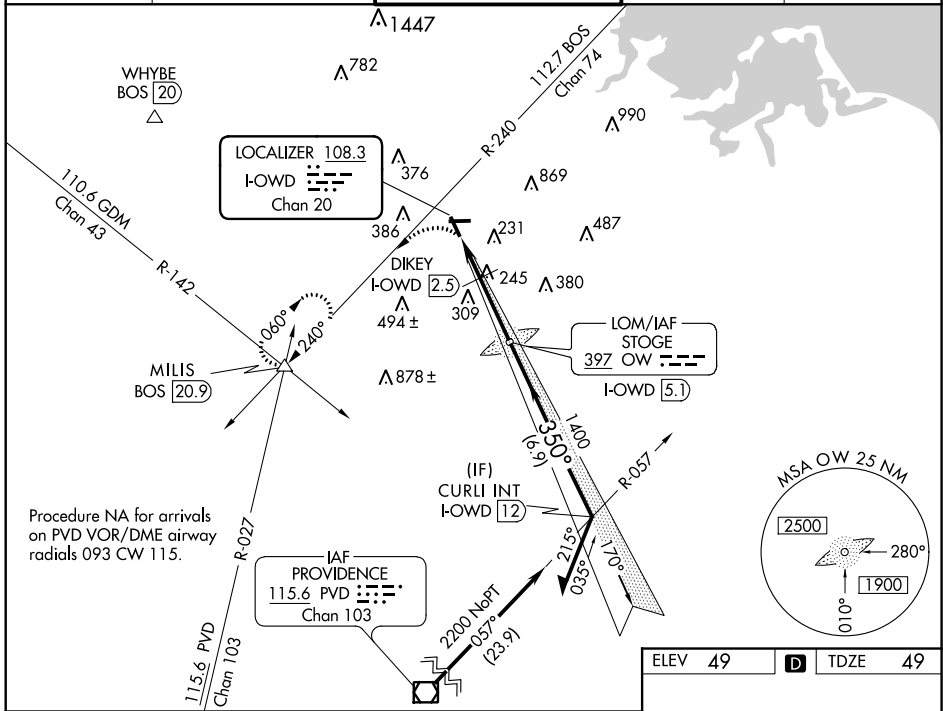


LOC/DME I-OWD <b>108.3</b> Chan 20	APP CRS <b>350°</b>	Rwy Idg <b>4007</b> TDZE <b>49</b> Apt Elev <b>49</b>
------------------------------------------	------------------------	-------------------------------------------------------------

# LOC RWY 35

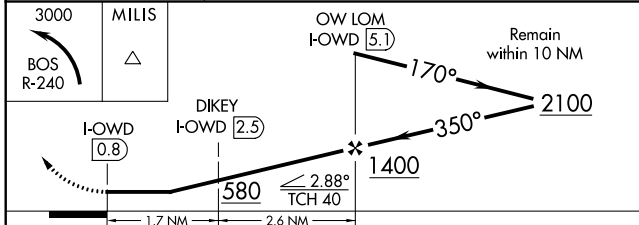
NORWOOD MEMORIAL (OWD)

ADF or DME required.		MALSF	MISSED APPROACH: Climbing left turn to 3000 and BOS VOR/DME R-240 to MILIS INT/20.9 DME and hold, continue climb-in-hold to 3000.	
<p>▼ Helicopter visibility reduction below 3/4 SM NA. DIKEY fix minimums: For inop ALS, increase S-35 Cat C/D visibility to 1 3/8 SM. Circling NA at night.</p>				
ATIS <b>119.95</b>	BOSTON APP CON <b>124.1 263.1</b>	NORWOOD TOWER ★ <b>126.0 (CTAF) 0</b>	GND CON <b>121.8</b>	CLNC DEL <b>121.8</b>

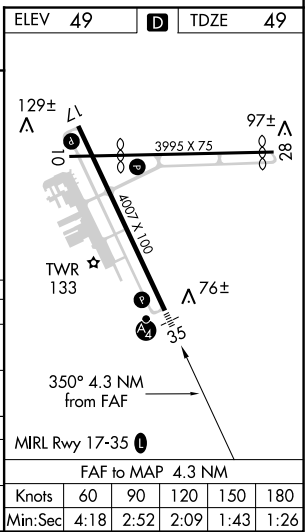


NE-1, 25 FEB 2021 to 25 MAR 2021

NE-1, 25 FEB 2021 to 25 MAR 2021



CATEGORY	A	B	C	D
S-35	580-3/4	531 (600-3/4)	580-1 1/4	531 (600-1 1/4)
CIRCLING	600-1 551 (600-1)	700-1 651 (700-1)	1220-3	1171 (1200-3)
DIKEY FIX MINIMUMS				
S-35	500-3/4	451 (500-3/4)	500-1	451 (500-1)
CIRCLING	600-1 551 (600-1)	700-1 651 (700-1)	1220-3	1171 (1200-3)



WAAS CH <b>86400</b> <b>W35A</b>	APP CRS <b>350°</b>	Rwy Idg TDZE Apt Elev	<b>4007</b> <b>49</b> <b>49</b>
----------------------------------------	------------------------	-----------------------------	---------------------------------------

# RNAV (GPS) RWY 35

NORWOOD MEMORIAL (OWD)

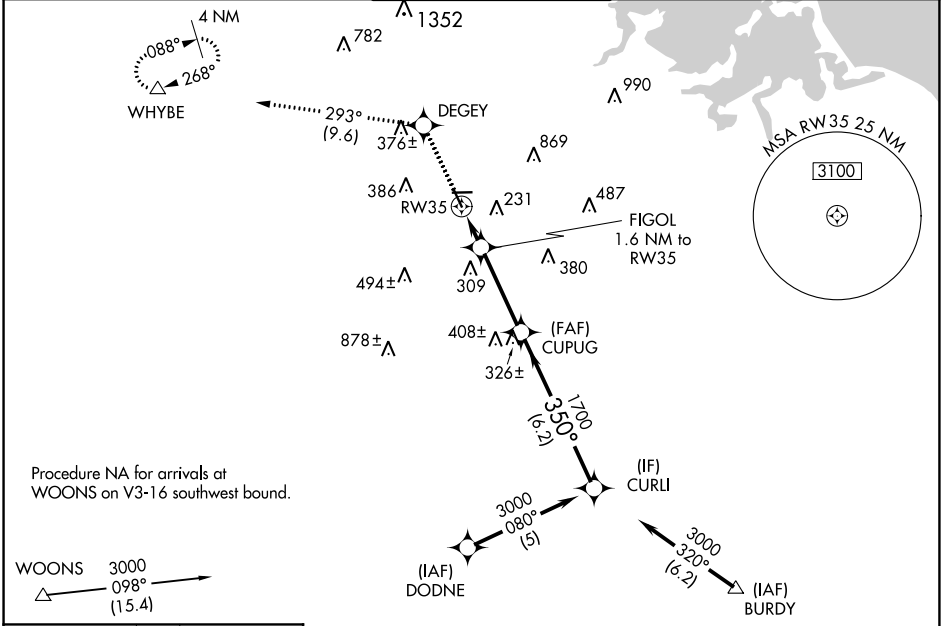
RNP APCH.

**⚠** Rwy 35 helicopter visibility reduction below 3/4 SM NA. For inop ALS, increase LPV all Cats visibility to 7/8 SM. For uncompensated Baro-VNAV systems, LNAV/VNAV NA below -15°C or above 48°C. Circling NA at night.

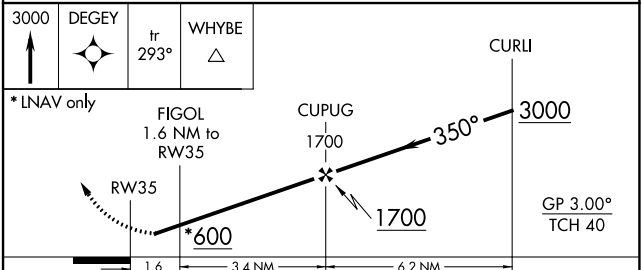
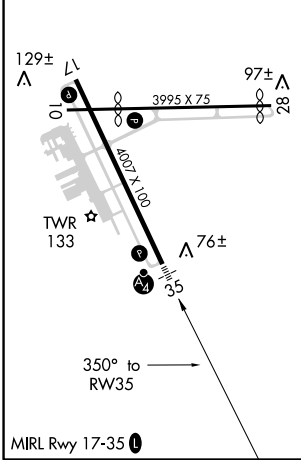


MISSED APPROACH: Climb to 3000 direct DEGEY and on track 293° to WHYBE and hold, continue climb-in-hold to 3000.

ATIS <b>119.95</b>	BOSTON APP CON <b>124.1 263.1</b>	NORWOOD TOWER ★ <b>126.0 (CTAF) 0</b>	GND CON <b>121.8</b>	CLNC DEL <b>121.8</b>
-----------------------	--------------------------------------	------------------------------------------	-------------------------	--------------------------



ELEV 49	<b>D</b>	TDZE 49
---------	----------	---------



CATEGORY	A	B	C	D
LPV DA		344-3/4	295 (300-3/4)	
LNAV/VNAV DA		594-1 3/8	545 (600-1 3/8)	
LNAV MDA	580-3/4	531 (600-3/4)	580-1 1/4	531 (600-1 1/4)
<b>C</b> CIRCLING	600-1 551 (600-1)	700-1 651 (700-1)	1220-3	1171 (1200-3)

NE-1, 25 FEB 2021 to 25 MAR 2021

NE-1, 25 FEB 2021 to 25 MAR 2021