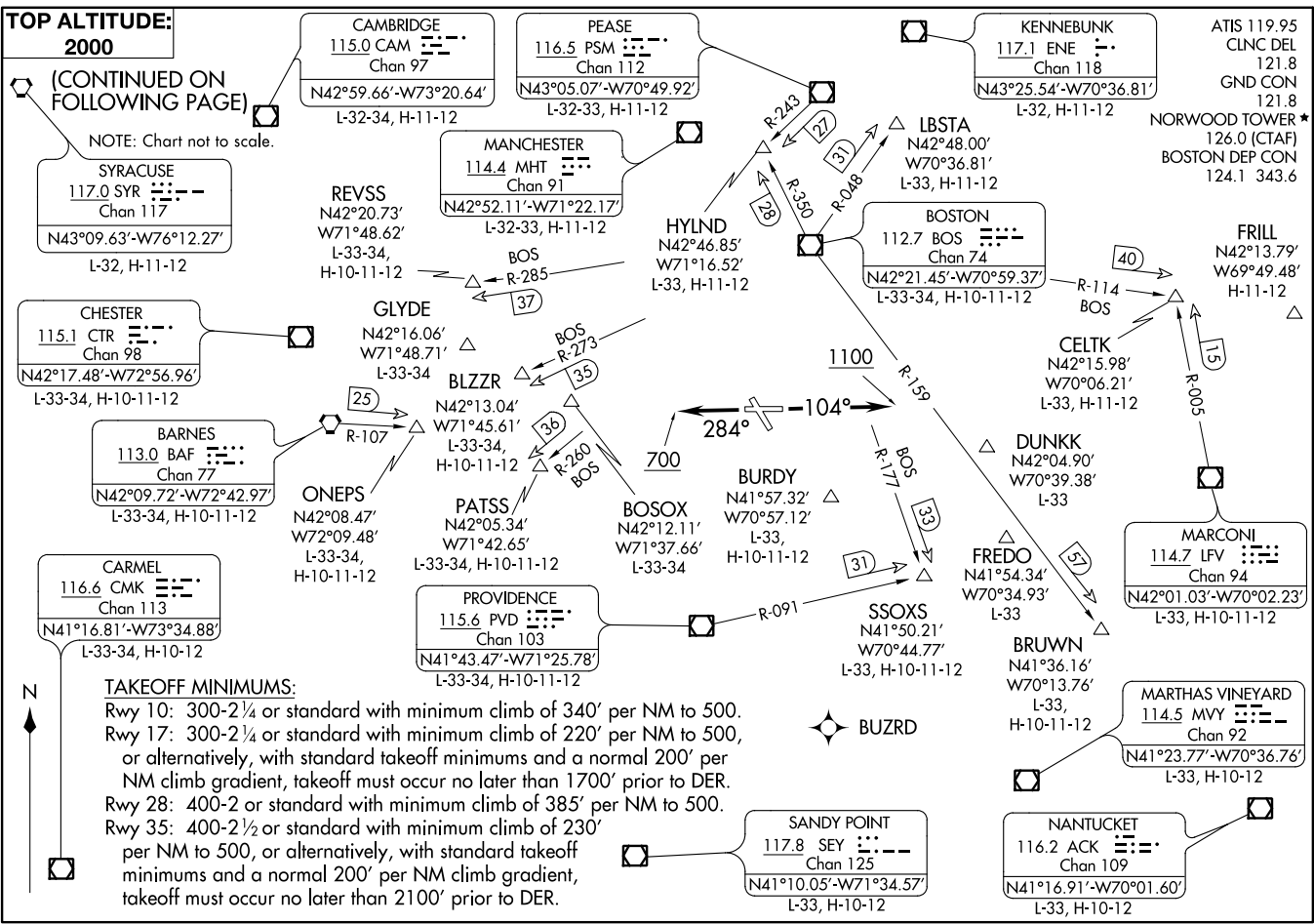


NORWOOD TWO DEPARTURE (OWD2.OWD) 25MAY16 NORWOOD, MASSACHUSETTS NORWOOD MEMORIAL (OWD)



(OWD2.OWD) 20310 AL-725 (FAA) NORWOOD MEMORIAL (OWD) NORWOOD, MASSACHUSETTS

NORWOOD TWO DEPARTURE



DEPARTURE ROUTE DESCRIPTION

TAKEOFF RWY 10: Climb heading 104° to 1100, then as assigned by ATC, thence

TAKEOFF RWY 17: Climb heading as assigned by ATC, thence....

TAKEOFF RWY 28: Climb heading 284° to 700, then as assigned by ATC, thence

TAKEOFF RWY 35: Climb heading 280° CW 330° as assigned by ATC, thence

. . . . Expect RADAR vectors to assigned route/navaid/fix. Maintain 2000.

Expect clearance to filed altitude/flight level within ten (10) minutes after departure.

NOTE: RADAR required.

NOTE: Non RNAV equipped aircraft can expect vectors on assigned route.

NOTE: BLZZR DEPARTURES expect vectors on BOS R-273, DME required.

NOTE: BRUWN DEPARTURES expect vectors on BOS R-159, DME required.

NOTE: CELTK DEPARTURES expect vectors on BOS R-114.

NOTE: HYLND DEPARTURES expect vectors on BOS R-350.

NOTE: PATSS DEPARTURES expect vectors on BOS R-260, DME required.

NOTE: REVSS DEPARTURES expect vectors on BOS R-285, DME required.

NOTE: SSOXS DEPARTURES expect vectors on BOS R-177.

NE-1, 25 FEB 2021 to 25 MAR 2021

NE-1, 25 FEB 2021 to 25 MAR 2021

NORWOOD TWO DEPARTURE