

# SHREK TWO ARRIVAL (RNAV)

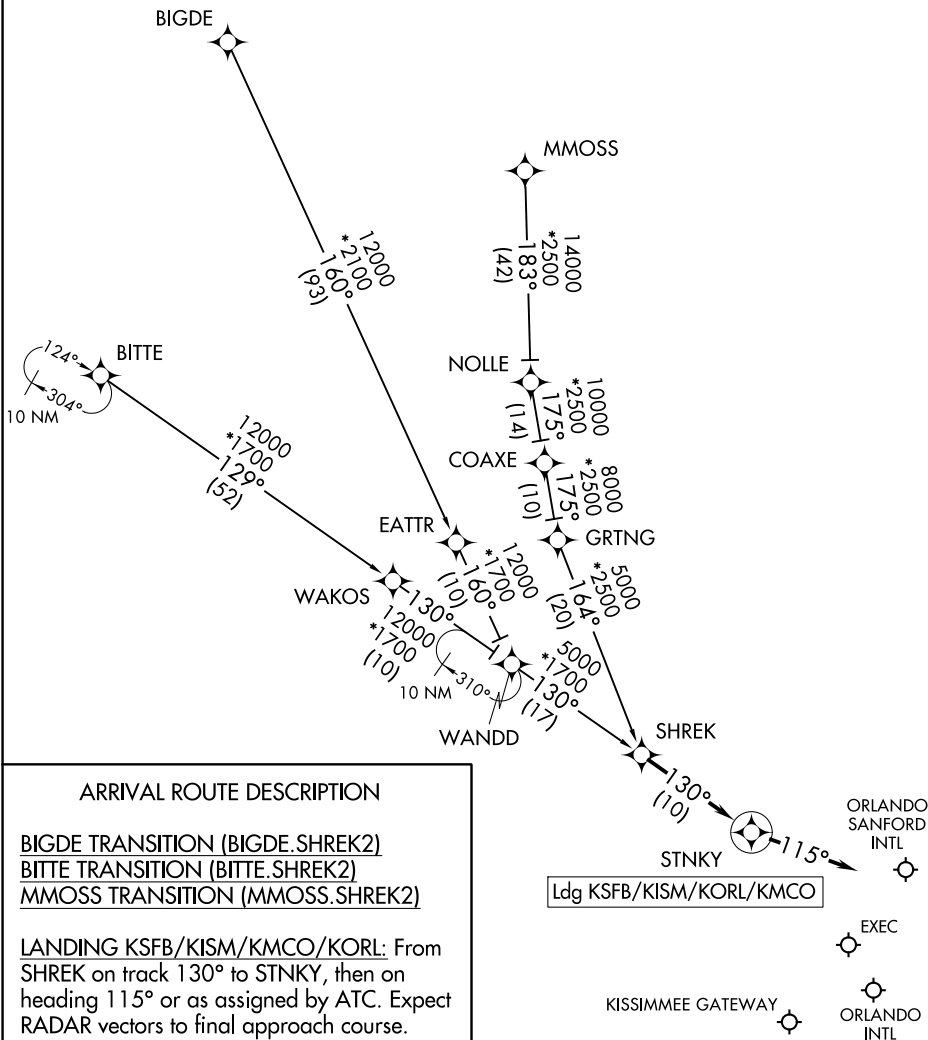
ORLANDO, FLORIDA

RNAV 1 - DME/DME/IRU or GPS.

RADAR required.

ORLANDO APP CON 134.05 339.8  
 JACKSONVILLE APP CON 128.675 263.05  
 ISM ATIS 128.775  
 ORL ATIS 127.25  
 SFB ATIS 125.975  
 MCO D-ATIS ARR 121.25

NOTE: Jets landing ISM and ORL, ATC assigned only.  
 NOTE: Turboprops and props only landing MCO.  
 NOTE: Landing all airports, expect RADAR vectors after STINKY.



SE-3, 22 FEB 2024 to 21 MAR 2024

SE-3, 22 FEB 2024 to 21 MAR 2024

# SHREK TWO ARRIVAL (RNAV)

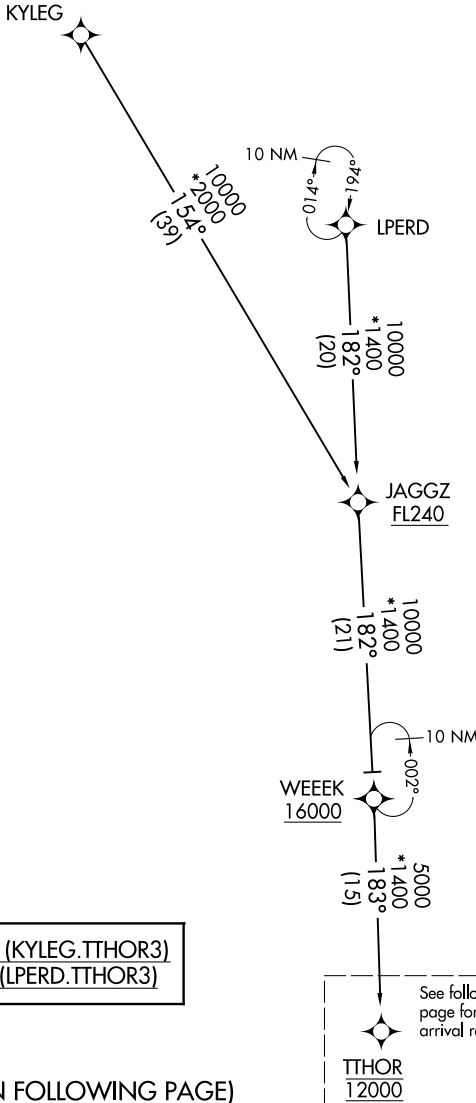
(SHREK.SHREK2) 02DEC21

ORLANDO, FLORIDA

ORLANDO APP CON  
 119.775 351.9  
 DAYTONA APP CON  
 118.85 353.825  
 DAB ATIS  
 132.875  
 EVB ATIS  
 124.625  
 LEE ATIS  
 134.325  
 ORL ATIS  
 127.25  
 OMN ATIS  
 118.475  
 SFB ATIS  
 125.975

RNAV 1 - DME/DME/IRU or GPS.  
 RADAR required.

NOTE: Jet and turboprop aircraft only.



KYLEG TRANSITION (KYLEG.TTHOR3)  
 LPERD TRANSITION (LPERD.TTHOR3)

(CONTINUED ON FOLLOWING PAGE)

NOTE: Chart not to scale.

SE-3, 22 FEB 2024 to 21 MAR 2024

SE-3, 22 FEB 2024 to 21 MAR 2024

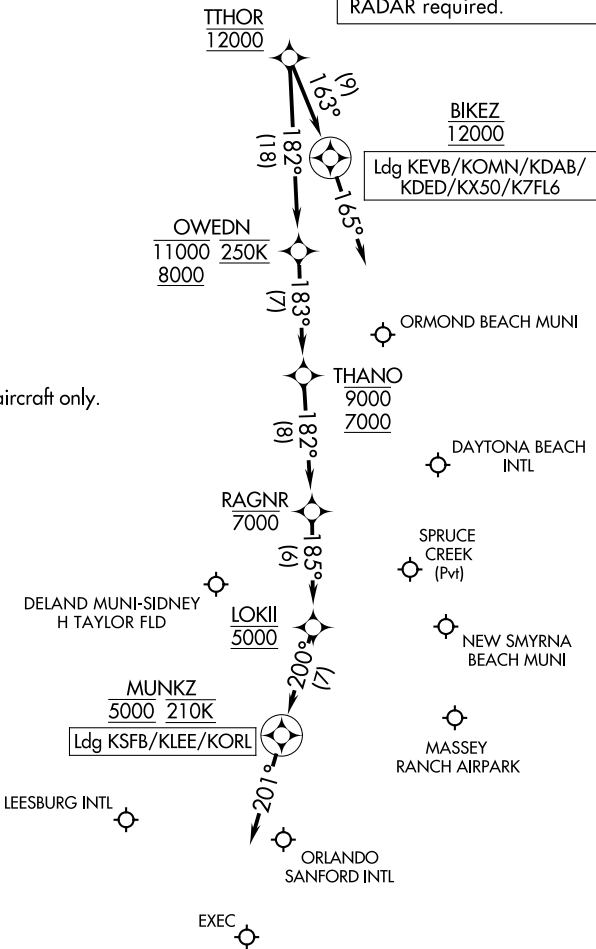
# TTHOR THREE ARRIVAL (RNAV) Arrival Routes

ORLANDO, FLORIDA

ORLANDO APP CON  
119.775 351.9  
DAYTONA APP CON  
118.85 353.825  
DAB ATIS  
132.875  
EVB ATIS  
124.625  
LEE ATIS  
134.325  
ORL ATIS  
127.25  
OMN ATIS  
118.475  
SFB ATIS  
125.975

RNAV 1 - DME/DME/IRU or GPS.  
RADAR required.

NOTE: Jet and turboprop aircraft only.



NOTE: Chart not to scale.

## ARRIVAL ROUTE DESCRIPTION

**LANDING KEVB/KOMN/KDAB/KDED/KX50/K7FL6:** From TTHOR on track 163° to cross BIKEZ at 12000, then on track 165°. Expect RADAR vectors to final approach course.

**LANDING KSF/KLEE/KORL:** From TTHOR on track 182° to cross OWEDN between 8000 and 11000 and at 250K, then on track 183° to cross THANO between 7000 and 9000, then on track 182° to cross RAGNR at or below 7000, then on track 185° to cross LOKII at 5000, then on track 200° to cross MUNKZ at 5000 and at 210K, then on track 201°. Expect RADAR vectors to final approach course.

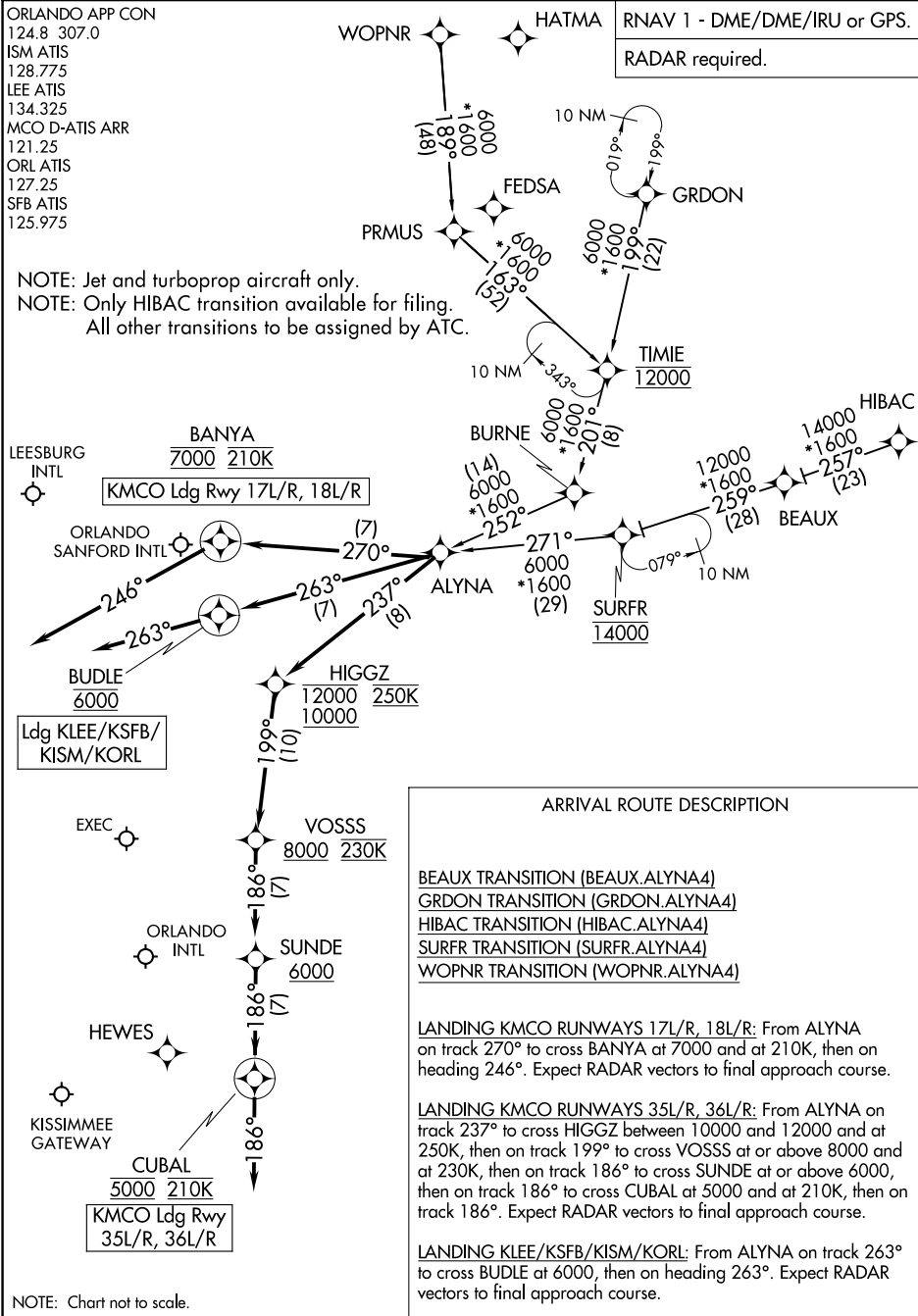
# ALYNA FOUR ARRIVAL (RNAV)

ORLANDO, FLORIDA

ORLANDO APP CON  
 124.8 307.0  
 ISM ATIS  
 128.775  
 LEE ATIS  
 134.325  
 MCO D-ATIS ARR  
 121.25  
 ORL ATIS  
 127.25  
 SFB ATIS  
 125.975

RNAV 1 - DME/DME/IRU or GPS.  
 RADAR required.

NOTE: Jet and turboprop aircraft only.  
 NOTE: Only HIBAC transition available for filing.  
 All other transitions to be assigned by ATC.



### ARRIVAL ROUTE DESCRIPTION

**BEAUX TRANSITION (BEAUX.ALYNA4)**  
**GRDON TRANSITION (GRDON.ALYNA4)**  
**HIBAC TRANSITION (HIBAC.ALYNA4)**  
**SURFR TRANSITION (SURFR.ALYNA4)**  
**WOPNR TRANSITION (WOPNR.ALYNA4)**

**LANDING KMCO RUNWAYS 17L/R, 18L/R:** From ALYNA on track 270° to cross BANYA at 7000 and at 210K, then on heading 246°. Expect RADAR vectors to final approach course.

**LANDING KMCO RUNWAYS 35L/R, 36L/R:** From ALYNA on track 237° to cross HIGGZ between 10000 and 12000 and at 250K, then on track 199° to cross VOSSS at or above 8000 and at 230K, then on track 186° to cross SUNDE at or above 6000, then on track 186° to cross CUBAL at 5000 and at 210K, then on track 186°. Expect RADAR vectors to final approach course.

**LANDING KLEE/KSFB/KISM/KORL:** From ALYNA on track 263° to cross BUDLE at 6000, then on heading 263°. Expect RADAR vectors to final approach course.

NOTE: Chart not to scale.

# ALYNA FOUR ARRIVAL (RNAV)

(ALYNA.ALYNA4) 25JAN24

ORLANDO, FLORIDA

SE-3, 22 FEB 2024 to 21 MAR 2024

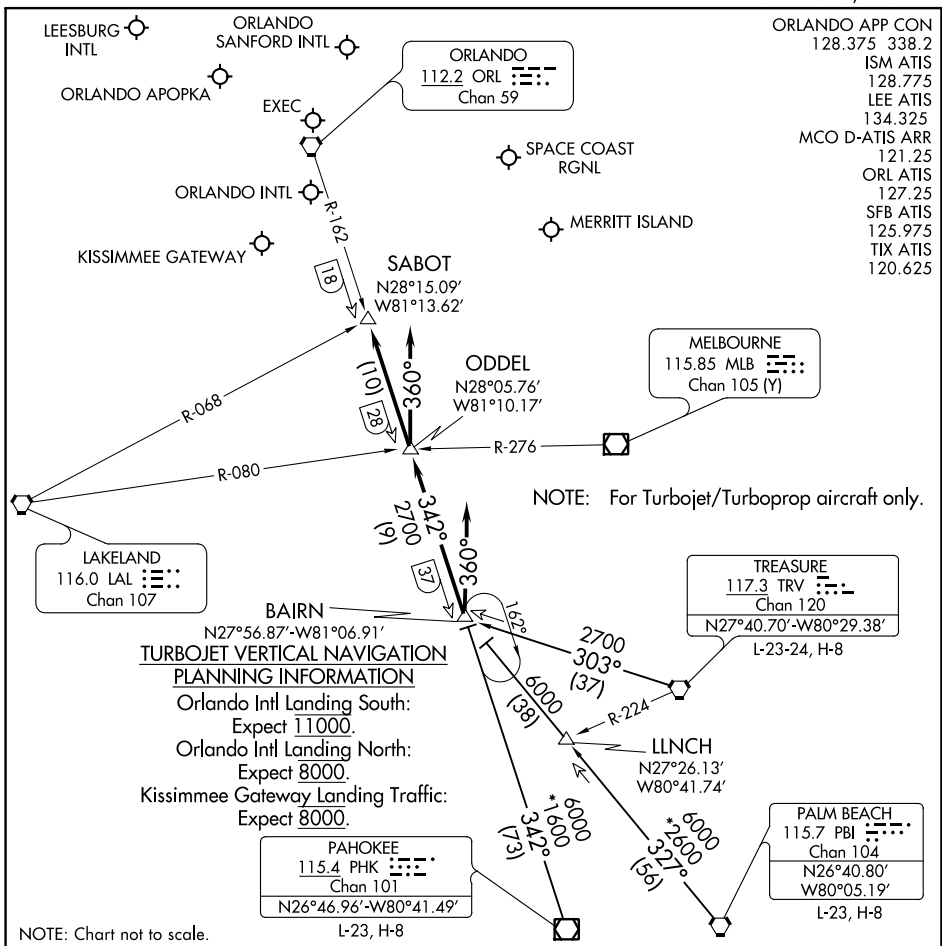
SE-3, 22 FEB 2024 to 21 MAR 2024

(BAIRN.GOOFY7) 23222

AL-571 (FAA)

# GOOFY SEVEN ARRIVAL

ORLANDO, FLORIDA



SE-3, 22 FEB 2024 to 21 MAR 2024

SE-3, 22 FEB 2024 to 21 MAR 2024

## ARRIVAL ROUTE DESCRIPTION

**PAHOKEE TRANSITION (PHK.GOOFY7):** From over PHK VOR/DME on PHK R-342 to BAIRN INT.

Thence . . .

**PALM BEACH TRANSITION (PBI.GOOFY7):** From over PBI VORTAC on PBI R-327 to BAIRN INT.

Thence . . .

**TREASURE TRANSITION (TRV.GOOFY7):** From over TRV VORTAC on TRV R-303 to BAIRN INT.

Thence . . .

### ORLANDO INTL:

. . . Rwy 17/18: From over BAIRN INT on ORL VORTAC R-162 to ODDELE INT. Depart ODDELE INT heading 360° for vector to final approach course.

. . . Rwy 35/36: Depart BAIRN INT heading 360° for vector to final approach course.

**LEESBURG INTL:** . . . From over BAIRN INT on ORL VORTAC R-162 to SABOT INT. Expect RADAR vectors to the airport.

**ALL OTHER AIRPORTS:** . . . From over BAIRN INT on ORL VORTAC R-162 to SABOT INT.

Expect RADAR vectors to final approach course.

# GOOFY SEVEN ARRIVAL

ORLANDO, FLORIDA

(BAIRN.GOOFY7) 27APR17

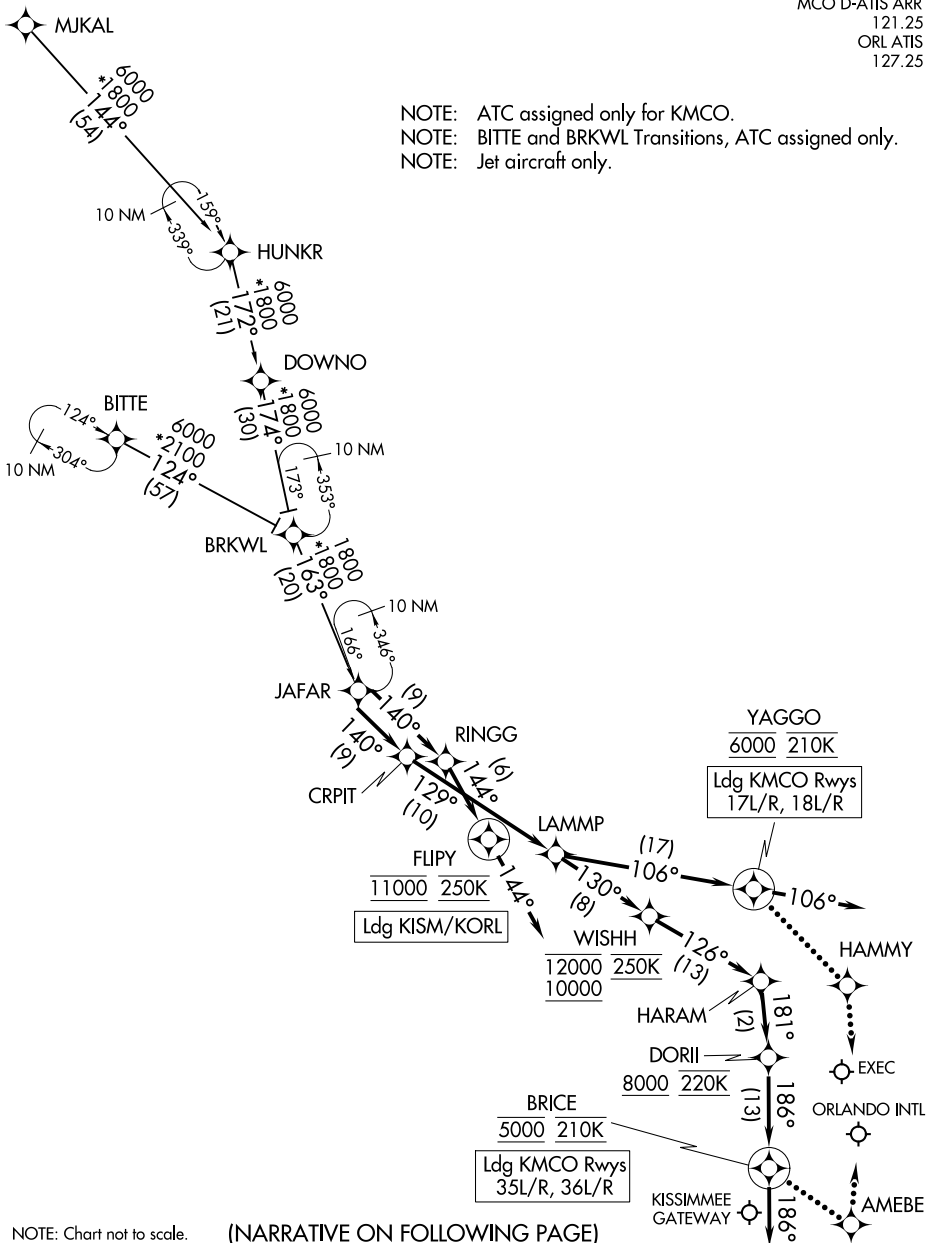
# JAFAR THREE ARRIVAL (RNAV)

ORLANDO, FLORIDA

RNAV 1 - DME/DME/IRU or GPS.
RADAR required.

ORLANDO APP CON  
134.05 339.8  
ISM ATIS  
128.775  
MCO D-ATIS ARR  
121.25  
ORLATIS  
127.25

NOTE: ATC assigned only for KMCO.  
NOTE: BITTE and BRKWL Transitions, ATC assigned only.  
NOTE: Jet aircraft only.



NOTE: Chart not to scale.

(NARRATIVE ON FOLLOWING PAGE)

# JAFAR THREE ARRIVAL (RNAV)

ORLANDO, FLORIDA

SE-3, 22 FEB 2024 to 21 MAR 2024

SE-3, 22 FEB 2024 to 21 MAR 2024

ARRIVAL ROUTE DESCRIPTION

BITTE TRANSITION (BITTE.JAFAR3)  
BRKWL TRANSITION (BRKWL.JAFAR3)  
MJKAL TRANSITION (MJKAL.JAFAR3)

KMCO: From JAFAR on track 140° to CRPIT, then on track 129° to LAMMP.

LANDING KMCO RUNWAYS 17L/R, 18L/R: From LAMMP on track 106° to cross YAGGO at 6000 and at 210K, then on track 106°. Expect RADAR vectors to final approach course.

LANDING KMCO RUNWAYS 35L/R, 36L/R: From LAMMP on track 130° to cross WISHH between 10000 and 12000 and at 250K, then on track 126° to HARAM, then on track 181° to cross DORII at or above 8000 and at 220K, then on track 186° to cross BRICE at 5000 and at 210K, then on track 186°. Expect RADAR vectors to final approach course.

LANDING KISM/KORL: From JAFAR on track 140° to RINGG, then on track 144° to cross FLIPY at 11000 and at 250K, then on track 144°. Expect RADAR vectors to final approach course.

LOST COMMUNICATIONS

KMCO LANDING NORTH: Continue track to BRICE, then proceed direct AMEBE, intercept Rwy 36L final approach course, conduct approach.

KMCO LANDING SOUTH: Continue track to YAGGO, then proceed direct to HAMMY, intercept Rwy 18R final approach course, conduct approach.

SE-3, 22 FEB 2024 to 21 MAR 2024

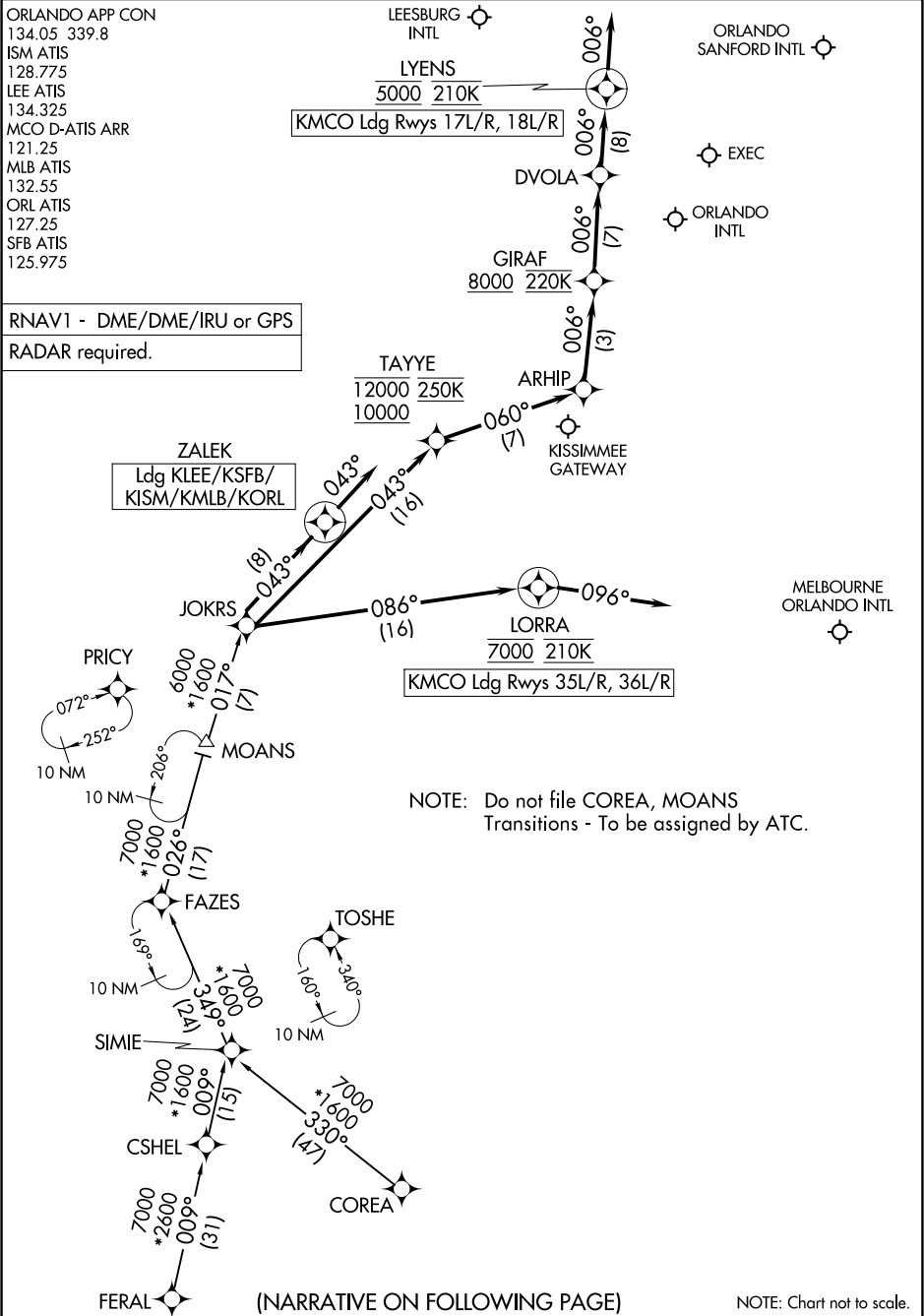
SE-3, 22 FEB 2024 to 21 MAR 2024

# JOKRS THREE ARRIVAL (RNAV)

ORLANDO, FLORIDA

ORLANDO APP CON  
 134.05 339.8  
 ISM ATIS  
 128.775  
 LEE ATIS  
 134.325  
 MCO D-ATIS ARR  
 121.25  
 MLB ATIS  
 132.55  
 ORL ATIS  
 127.25  
 SFB ATIS  
 125.975

RNAV1 - DME/DME/IRU or GPS  
 RADAR required.



SE-3, 22 FEB 2024 to 21 MAR 2024

SE-3, 22 FEB 2024 to 21 MAR 2024

# JOKRS THREE ARRIVAL (RNAV)

(JOKRS.JOKRS3) 19MAY22

ORLANDO, FLORIDA

(NARRATIVE ON FOLLOWING PAGE)

NOTE: Chart not to scale.



ARRIVAL ROUTE DESCRIPTION

COREA TRANSITION (COREA.JOKRS3)

CSHEL TRANSITION (CSHEL.JOKRS3)

FAZES TRANSITION (FAZES.JOKRS3)

FERAL TRANSITION (FERAL.JOKRS3)

MOANS TRANSITION (MOANS.JOKRS3)

LANDING KMCO RUNWAYS 17L/R, 18L/R: From JOKRS on track 043° to cross TAYYE between 10000 and 12000 and at 250K, then on track 060° to ARHIP, then on track 006° to cross GIRAF at or above 8000 and at 220K, then on track 006° to DVOLA, then on track 006° to cross LYENS at 5000 and at 210K, then on track 006°. Expect RADAR vectors to final approach course.

LANDING KMCO RUNWAYS 35L/R, 36L/R: From JOKRS on track 086° to cross LORRA at 7000 and at 210K, then on heading 096°. Expect RADAR vectors to final approach course.

LANDING KLEE/KSFB/KISM/KMLB/KORL: From JOKRS on track 043° to ZALEK, then on heading 043°. Expect RADAR vectors to final approach course.

SE-3, 22 FEB 2024 to 21 MAR 2024

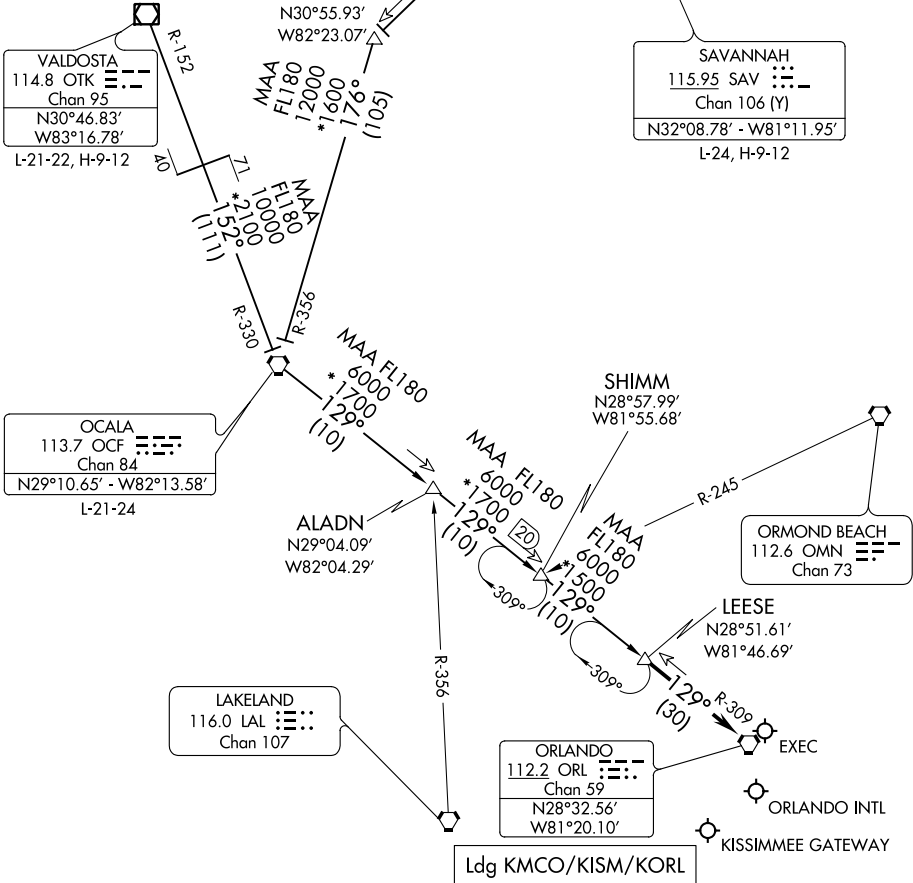
SE-3, 22 FEB 2024 to 21 MAR 2024

# LEESE THREE ARRIVAL

ORLANDO, FLORIDA

JACKSONVILLE APP CON  
128.675 263.05  
ORLANDO APP CON  
134.05 339.8  
ISM ATIS  
128.775  
MCO D-ATIS ARR  
121.25  
ORL ATIS  
127.25

NOTE: RADAR required  
NOTE: DME required



NOTE: Chart not to scale.

# LEESE THREE ARRIVAL

(LEESE.LEESE3) 22APR21

ORLANDO, FLORIDA

SE-3, 22 FEB 2024 to 21 MAR 2024

SE-3, 22 FEB 2024 to 21 MAR 2024

ARRIVAL ROUTE DESCRIPTION

OCALA TRANSITION (OCF.LEESE3): From over OCF VORTAC on OCF R-129 to LEESE. Thence . . . .

SAVANNAH TRANSITION (SAV.LEESE3): From over SAV VORTAC on SAV R-226 to SEMP, then on OCF R-356 to OCF VORTAC, then on OCF R-129 to LEESE. Thence . . . .

VALDOSTA TRANSITION (OTK.LEESE3): From over OTK VOR/DME on OTK R-152 and OCF R-330 to OCF VORTAC, then on OCF R-129 to LEESE. Thence . . . .

. . . . from LEESE on ORLANDO VORTAC ORL R-309 to ORL VORTAC.  
Expect RADAR vectors to final approach course after LEESE.

SE-3, 22 FEB 2024 to 21 MAR 2024

SE-3, 22 FEB 2024 to 21 MAR 2024

ORLANDO APP CON  
134.05 339.8  
ISM ATIS  
128.775  
LEE ATIS  
134.325  
MCO D-ATIS ARR  
121.25  
ORL ATIS  
127.25  
SFB ATIS  
125.975  
TIX ATIS  
120.625

OCALA  
113.7 OCF  
Chan 84

ORLANDO  
112.2 ORL  
Chan 59  
N28°32.56'  
W81°20.10'

**ANDRO**  
N28°02.95' - W81°53.14'  
TURBOJET VERTICAL NAVIGATION PLANNING INFORMATION

Orlando Intl Landing South: Expect clearance to cross at 13,000'.  
Orlando Intl Landing North: Expect clearance to cross at 13,000' and 250 KTS.

**MOANS**  
N27°54.83' - W81°44.91'  
TURBOJET VERTICAL NAVIGATION PLANNING INFORMATION

Orlando Intl Landing South: Expect clearance to cross at 13,000'.  
Orlando Intl Landing North: Expect clearance to cross at 10,000' and 250 KTS.

ST PETERSBURG  
116.4 PIE  
Chan 111  
N27°54.47'  
W82°41.06'  
L-21-24, H-8

SYKES  
N27°39.88'  
W83°02.99'

GUMMY  
N27°49.59'  
W82°31.94'

LAKELAND  
116.0 LAL  
Chan 107  
N27°59.17'  
W82°00.83'

MINEE  
N28°07.10'  
W81°44.67'

DOWNNN  
N27°30.65'  
W81°45.39'

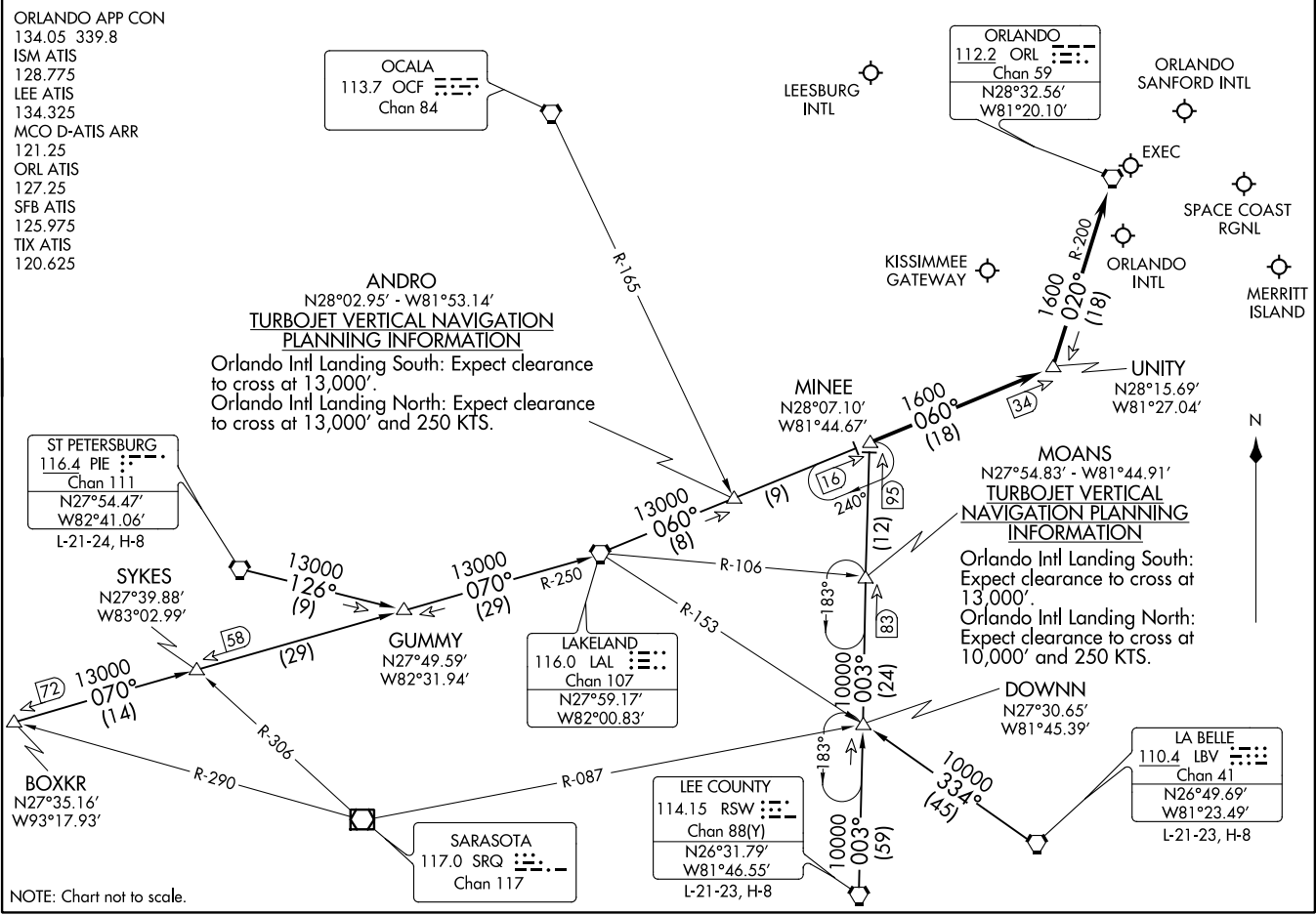
LA BELLE  
110.4 LBV  
Chan 41  
N26°49.69'  
W81°23.49'  
L-21-23, H-8

BOXKR  
N27°35.16'  
W93°17.93'

SARASOTA  
117.0 SRQ  
Chan 117

LEE COUNTY  
114.15 RSW  
Chan 88(Y)  
N26°31.79'  
W81°46.55'  
L-21-23, H-8

NOTE: Chart not to scale.



# MINEE FIVE ARRIVAL (MINEE.MINEE5)

ORLANDO, FLORIDA

## ARRIVAL ROUTE DESCRIPTION

BOXKR TRANSITION (BOXKR.MINEE5): From over BOXKR INT via LAL R-250 to LAL VORTAC, then via LAL R-060 to MINEE INT. Thence. . . .

LA BELLE TRANSITION (LBV.MINEE5): From over LBV VORTAC via LBV R-334 to DOWNN INT, then via RSW R-003 to MINEE INT. Thence. . . .

LEE COUNTY TRANSITION (RSW.MINEE5): From over RSW VORTAC via RSW R-003 to MINEE INT. Thence. . . .

ST. PETERSBURG TRANSITION (PIE.MINEE5): From over PIE VORTAC via PIE R-126 to GUMMY INT, then via LAL R-250 to LAL VORTAC, then via LAL R-060 to MINEE INT. Thence. . . .

. . . . From over MINEE INT via LAL R-060 to UNITY INT, then via ORL R-200 to ORL VORTAC.

LEESBURG INTL: Expect radar vectors to airport after UNITY INT.

ALL OTHER AIRPORTS: Expect radar vectors to final approach course after UNITY INT.

SE-3, 22 FEB 2024 to 21 MAR 2024

SE-3, 22 FEB 2024 to 21 MAR 2024

(PRIC3.PRIC3) 03NOV22

PRIC3 THREE ARRIVAL (RNAV) Transition Routes

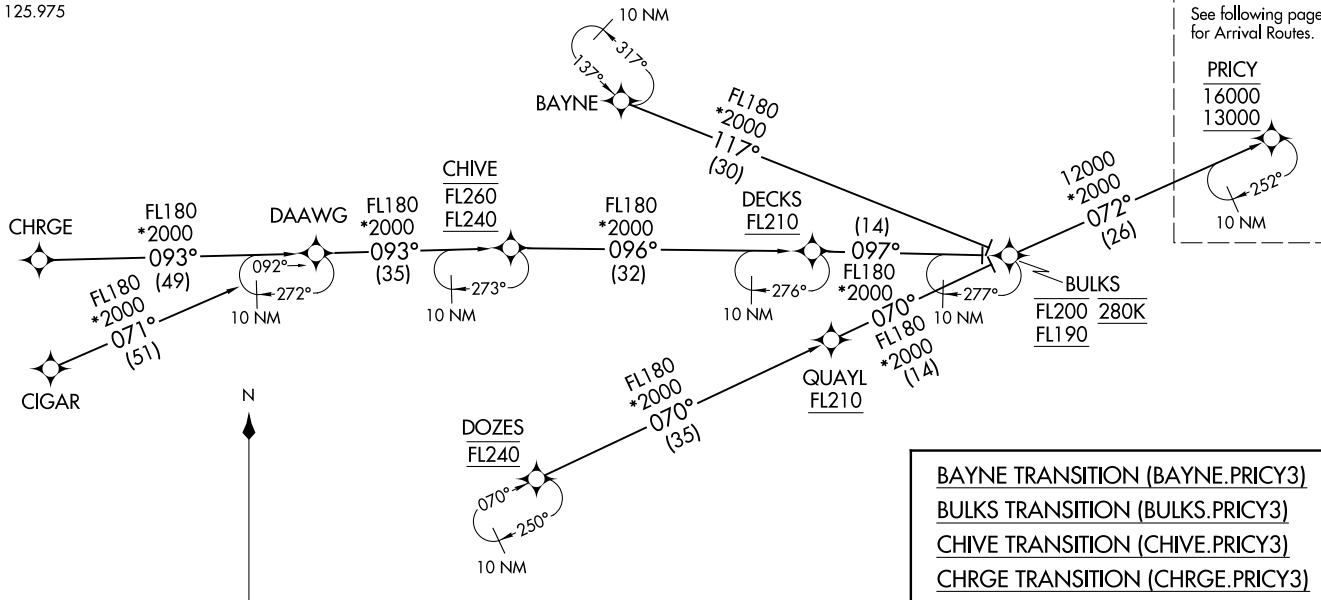
ORLANDO, FLORIDA

ORLANDO APP CON  
134.05 339.8  
ISM ATIS  
128.775  
LEE ATIS  
134.325  
MCO D-ATIS ARR  
121.25  
MLB ATIS  
132.55  
ORL ATIS  
127.25  
SFB ATIS  
125.975

NOTE: Jet aircraft only.  
NOTE: Do not file BULKS, CHIVE or DOZES Transitions - to be assigned by ATC.  
NOTE: For vertical navigation planning, landing south, select Rwy 18R, landing north, select Rwy 36L.

RNAV 1 - DME/DME/IRU or GPS.  
CHRG Transition, RNAV 1-GPS.  
CIGAR Transition, RNAV 1-GPS.

RADAR required.



NOTE: Chart not to scale.

(CONTINUED ON FOLLOWING PAGE)

- BAYNE TRANSITION (BAYNE.PRIC3)
- BULKS TRANSITION (BULKS.PRIC3)
- CHIVE TRANSITION (CHIVE.PRIC3)
- CHRG TRANSITION (CHRG.PRIC3)
- CIGAR TRANSITION (CIGAR.PRIC3)
- DOZES TRANSITION (DOZES.PRIC3)

(PRIC3.PRIC3) 22307

AL-571 (FAA)  
PRIC3 THREE ARRIVAL (RNAV) Transition Routes

ORLANDO, FLORIDA

# PRICY THREE ARRIVAL (RNAV) Arrival Routes

ORLANDO, FLORIDA

ORLANDO APP CON  
 134.05 339.8  
 ISM ATIS  
 128.775  
 LEE ATIS  
 134.325  
 MCO D-ATIS ARR  
 121.25  
 MLB ATIS  
 132.55  
 ORL ATIS  
 127.25  
 SFB ATIS  
 125.975

LEESBURG INTL

LYENS  
 5000 210K

Ldg KMCO Rwys 17L/R, 18L/R

ORLANDO SANFORD INTL

HAMMY

EXEC

DVOLA

ORLANDO INTL

GIRAF  
 8000 220K

ARHIP

KISSIMMEE GATEWAY

OTKEE  
 11000 250K

Ldg KLEE/KSFB/KISM/KORL/KMLB

TAYYE  
 12000 250K  
 10000

EXBAN

MELBOURNE ORLANDO INTL

PRICY  
 16000  
 13000

BOCCE

JUMBA

AMADS  
 9000

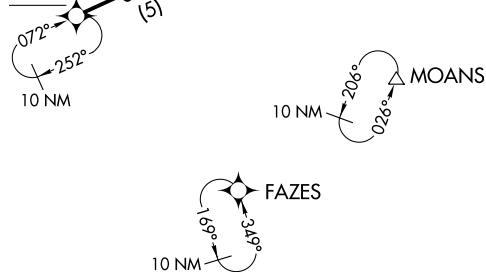
LORRA  
 7000 210K

Ldg KMCO Rwys 35L/R, 36L/R

NOTE: Jet aircraft only.  
 NOTE: For vertical navigation planning, landing south, select Rwy 18R, landing north, select Rwy 36L.

SE-3, 22 FEB 2024 to 21 MAR 2024

SE-3, 22 FEB 2024 to 21 MAR 2024



NOTE: Chart not to scale.

(NARRATIVE ON FOLLOWING PAGE)

# PRICY THREE ARRIVAL (RNAV) Arrival Routes

ORLANDO, FLORIDA

ARRIVAL ROUTE DESCRIPTION

KMCO: From PRICY on track 071° to BOCCE, then on track 068° to JUMBA.

LANDING KMCO RUNWAYS 17L/R, 18L/R: From JUMBA on track 068° to cross TAYYE between 10000 and 12000 and at 250K, then on track 060° to ARHIP, then on track 006° to cross GIRAF at or above 8000 and at 220K, then on track 006° to DVOLA, then on track 006° to cross LYENS at 5000 and at 210K, then on track 006°. Expect RADAR vectors to final approach course.

LANDING KMCO RUNWAYS 35L/R, 36L/R: From JUMBA on track 104° to cross AMADS at or below 9000, then on track 104° to cross LORRA at 7000 and at 210K, then on heading 096°. Expect RADAR vectors to final approach course.

LANDING KLEE/KSFB/KISM/KMLB/KORL: From PRICY on track 071° to BOCCE, then on track 056° to cross OTKEE at 11000 and at 250K, then on track 056°. Expect RADAR vectors to final approach course.

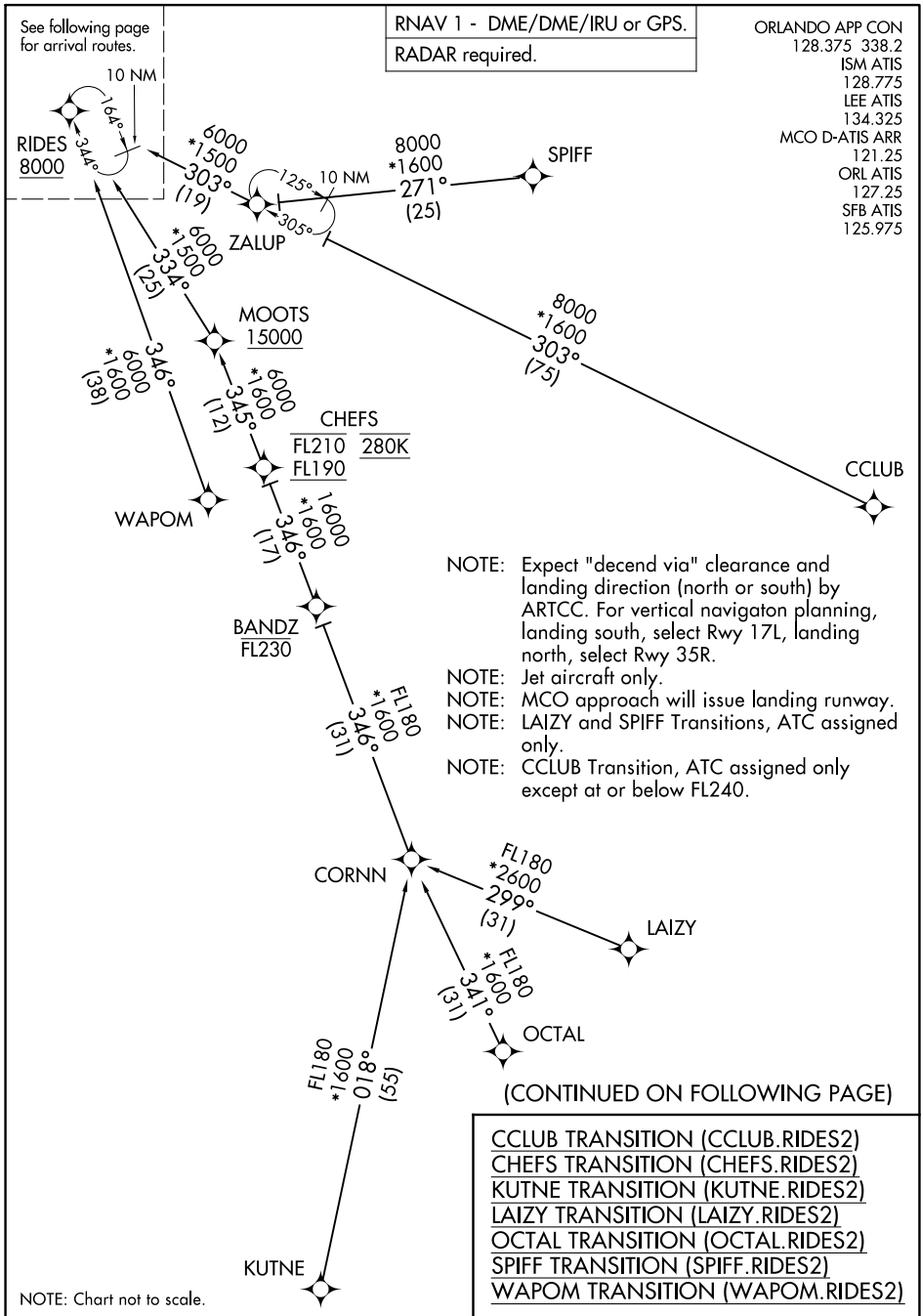
SE-3, 22 FEB 2024 to 21 MAR 2024

SE-3, 22 FEB 2024 to 21 MAR 2024



# RIDES TWO ARRIVAL (RNAV) Transition Routes

ORLANDO, FLORIDA



SE-3, 22 FEB 2024 to 21 MAR 2024

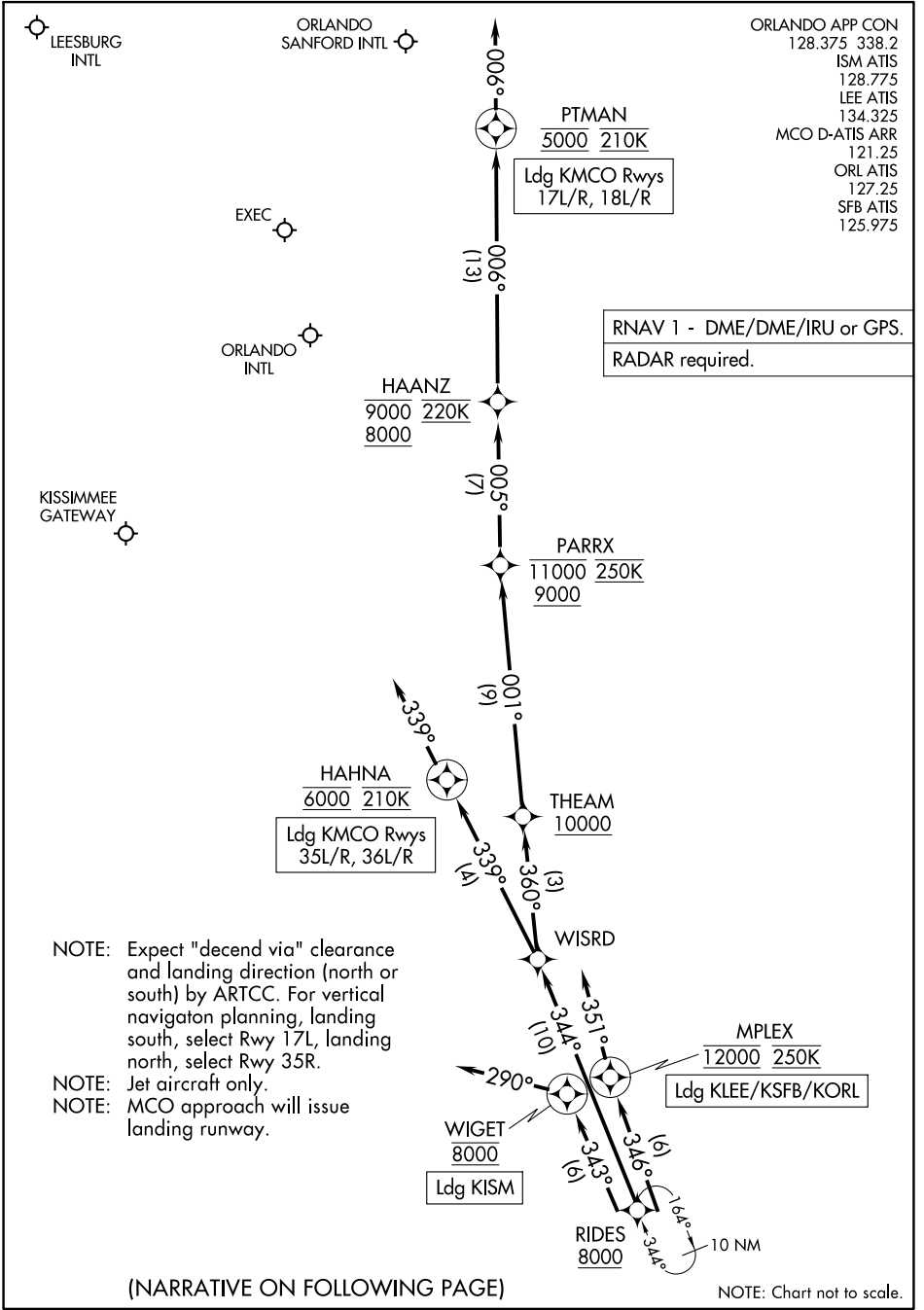
SE-3, 22 FEB 2024 to 21 MAR 2024

# RIDES TWO ARRIVAL (RNAV) Transition Routes

ORLANDO, FLORIDA

# RIDES TWO ARRIVAL (RNAV) Arrival Routes

ORLANDO, FLORIDA



SE-3, 22 FEB 2024 to 21 MAR 2024

SE-3, 22 FEB 2024 to 21 MAR 2024

ARRIVAL ROUTE DESCRIPTION

KMCO: From RIDES on track 344° to WISRD.

LANDING KMCO RUNWAYS 17L/R, 18L/R: From WISRD on track 360° to cross THEAM at or above 10000, then on track 001° to cross PARRX between 9000 and 11000 and at 250K, then on track 005° to cross HAANZ between 8000 and 9000 and at 220K, then on track 006° to cross PTMAN at 5000 and at 210K, then on track 006°. Expect RADAR vectors to final approach course.

LANDING KMCO RUNWAYS 35L/R, 36L/R: From WISRD on track 339° to cross HAHNA at 6000 and at 210K, then on track 339°. Expect ILS or RNAV Rwy 35R approach or RADAR vectors to final approach course.

LANDING KISM: From RIDES on track 343° to cross WIGET at 8000, then on heading 290°. Expect RADAR vectors to final approach course.

LANDING KLEE/KSFB/KORL: From RIDES on track 346° to cross MPLEX at 12000 and at 250K, then on heading 351°. Expect RADAR vectors to final approach course.

SE-3, 22 FEB 2024 to 21 MAR 2024

SE-3, 22 FEB 2024 to 21 MAR 2024