

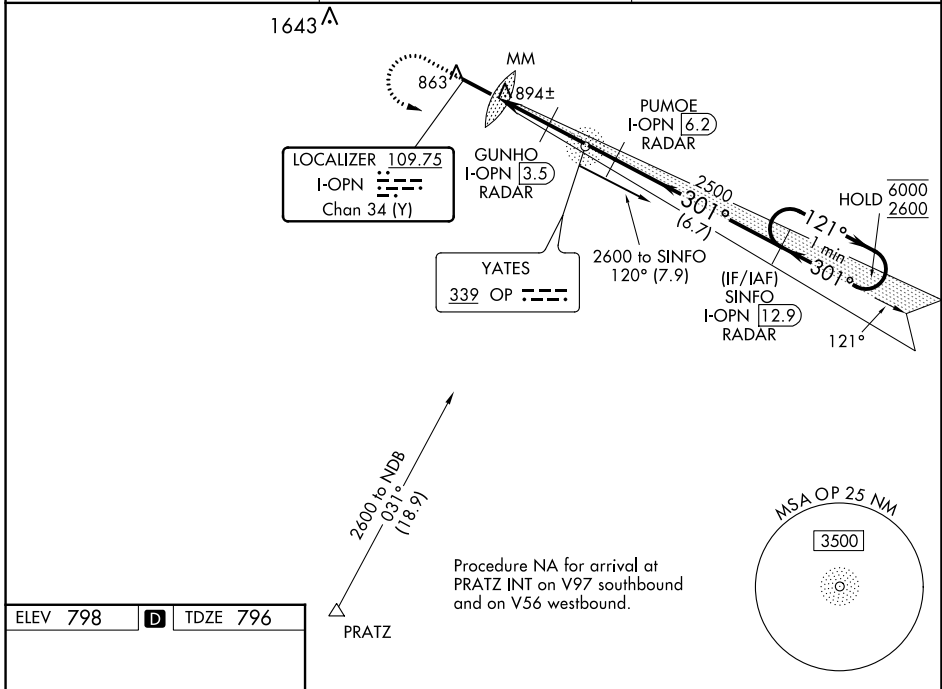
LOC/DME I-OPN 109.75 Chan 34 (Y)	APP CRS 301°	Rwy Idg 4962 TDZE 796 Apt Elev 798
--	------------------------	---

ILS or LOC RWY 30

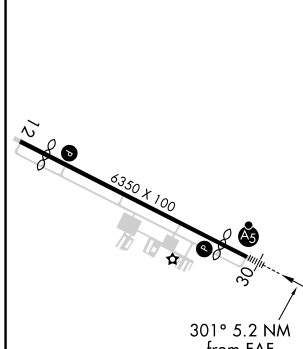
THOMASTON-UPSON COUNTY (OPN)

ADF required for procedure entry. DME or RADAR required.	MALSR	MISSED APPROACH: Climb to 1500 then climbing left turn to 2600 direct OP NDB and brg 120° to SINFO/I-OPN 12.9 DME/RADAR and hold.
For inop ALS, increase S-LOC 30 Cats C, D visibility to 1 SM.		

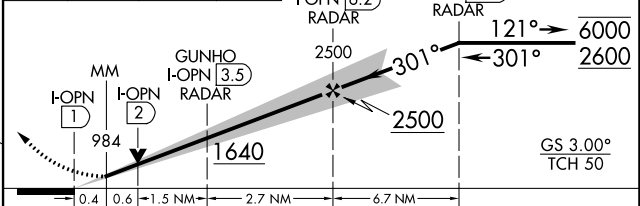
AWOS-3 133.975	ATLANTA APP CON ★ 124.2 279.6	UNICOM 122.8 (CTAF) 0
--------------------------	---	--



ELEV 798	D	TDZE 796
----------	----------	----------



1500	2600	OP brg 120°	SINFO I-OPN 12.9 RADAR	VGSI and ILS glidepath not coincident (VGSI Angle 3.00/TCH 27).
------	------	----------------	------------------------	---



CATEGORY	A	B	C	D
S-ILS 30	996-½ 200 (200-½)			
S-LOC 30	1160-½	364 (400-½)	1160-⅝	364 (400-⅝)
CIRCLING	1220-1 422 (500-1)	1260-1 462 (500-1)	1260-1½ 462 (500-1½)	1680-3 882 (900-3)

THOMASTON, GEORGIA
Amdt 3 24MAR22

32°57'N-84°16'W

THOMASTON-UPSON COUNTY (OPN)
ILS or LOC RWY 30

SE-4, 22 FEB 2024 to 21 MAR 2024

SE-4, 22 FEB 2024 to 21 MAR 2024

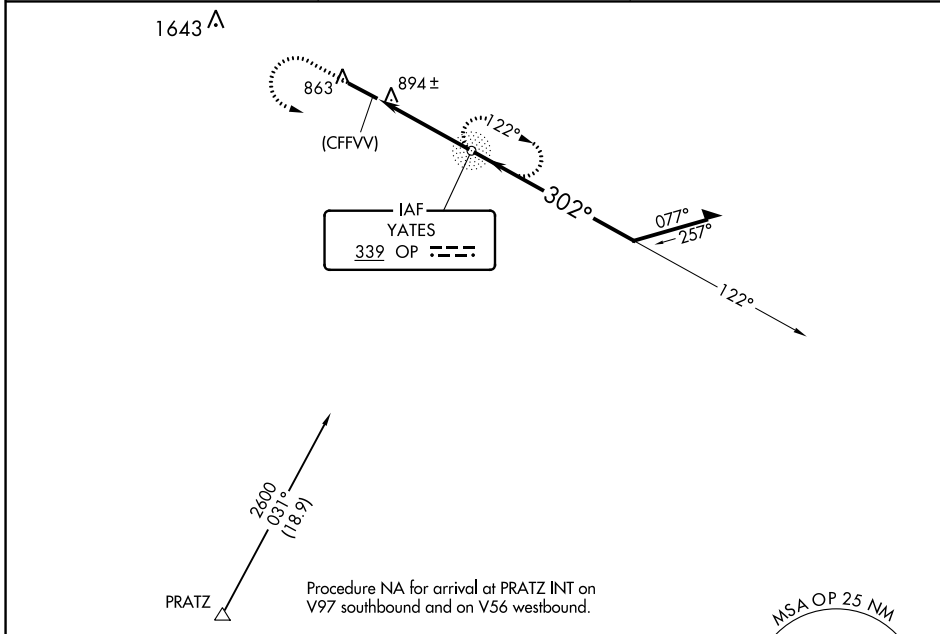
NDB OP 339	APP CRS 302°	Rwy Idg 4962
		TDZE 796
		Apt Elev 798

NDB RWY 30

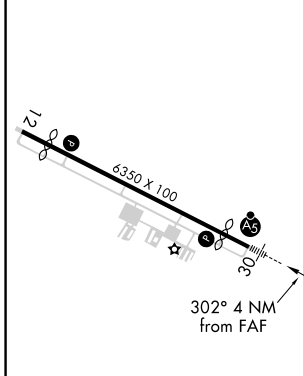
THOMASTON-UPSON COUNTY (OPN)

<p>For inop ALS, increase S-30 Cats A, B visibility to 1 SM and Cats C, D to 1 1/8 SM.</p>	<p>MALS R</p>	<p>MISSED APPROACH: Climb to 1500 then climbing left turn to 2600 direct YATES NDB and hold, continue climb-in-hold to 2600.</p>

AWOS-3 133.975	ATLANTA APP CON ★ 124.2 279.6	UNICOM 122.8 (CTAF)
--------------------------	---	-------------------------------



ELEV 798	D	TDZE 796
----------	----------	----------



1500	2600	OP		
<p>VGSI and descent angles not coincident (VGSI Angle 3.00/TCH 27).</p>				
<p>(CFFVV)</p>				
<p>4 NM</p>				
CATEGORY	A	B	C	D
S-30	1200-3/4 404 (500-3/4)			
CIRCLING	1220-1 422 (500-1)	1260-1 462 (500-1)	1260-1 1/2 462 (500-1 1/2)	1680-3 882 (900-3)

FAF to MAP 4 NM					
Knots	60	90	120	150	180
Min:Sec	4:00	2:40	2:00	1:36	1:20

SE-4, 22 FEB 2024 to 21 MAR 2024

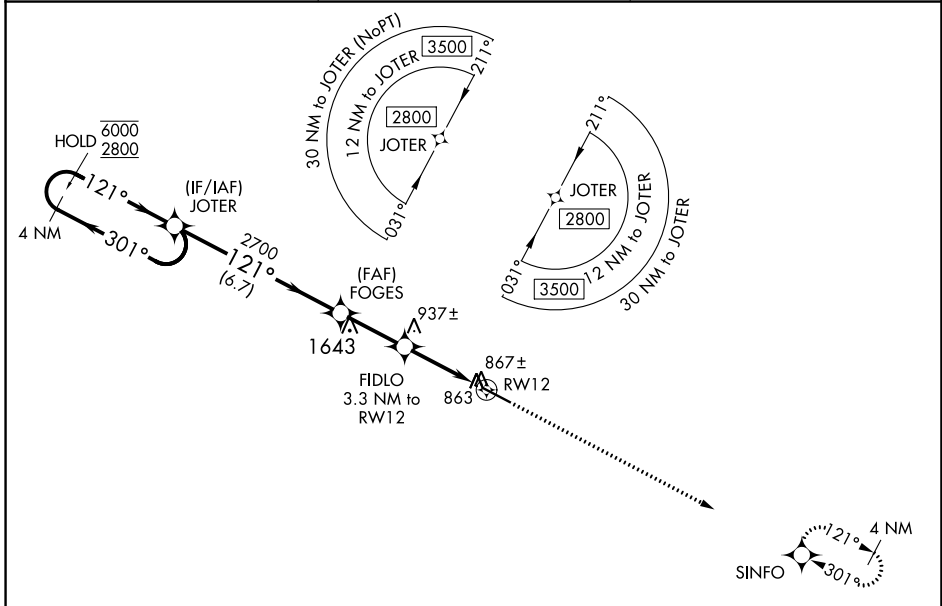
SE-4, 22 FEB 2024 to 21 MAR 2024

WAAS CH 63115 W12A	APP CRS 121°	Rwy Idg TDZE 791 Apt Elev 798	5525 791 798
--	------------------------	---	---

RNAV (GPS) RWY 12

THOMASTON-UPSON COUNTY (OPN)

RNP APCH-GPS.		MISSED APPROACH: Climb to 2600 direct SINFO and hold.
T A	Rwy 12 helicopter visibility reduction below 3/4 SM NA. For uncompensated Baro-VNAV systems, LNAV/VNAV NA below -16°C or above 54°C.	
AWOS-3 133.975	ATLANTA APP CON ★ 124.2 279.6	UNICOM 122.8 (CTAF)

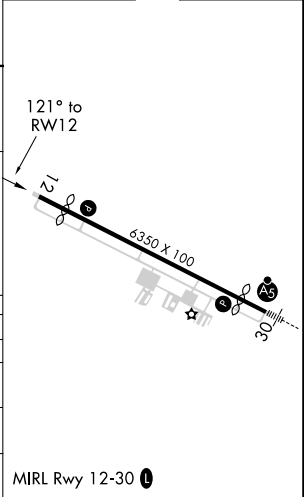


SE-4, 22 FEB 2024 to 21 MAR 2024

SE-4, 22 FEB 2024 to 21 MAR 2024

ELEV 798	D	TDZE 791
----------	----------	----------

4 NM Holding Pattern		VGSi and RNAV glidepath not coincident (VGSi Angle 3.50/TCH 32).		2600	SINFO
6000 ← 301°		2700		↑	✧
2800 → 121°		1860		121° to RWY 12	
GP 3.00°		2700		0.8 NM to RWY 12	
TCH 40		1860		RWY 12	
6.7 NM		2.6 NM		2.5	
CATEGORY	A	B	C	D	
LPV DA		1041-3/4	250 (300-3/4)		
LNAV/VNAV MDA		1041-3/4	250 (300-3/4)		
LNAV MDA		1120-1	329 (400-1)		
CIRCLING	1220-1 422 (500-1)	1260-1 462 (500-1)	1260-1 1/2 462 (500-1 1/2)	1680-3 882 (900-3)	MIRL Rwy 12-30



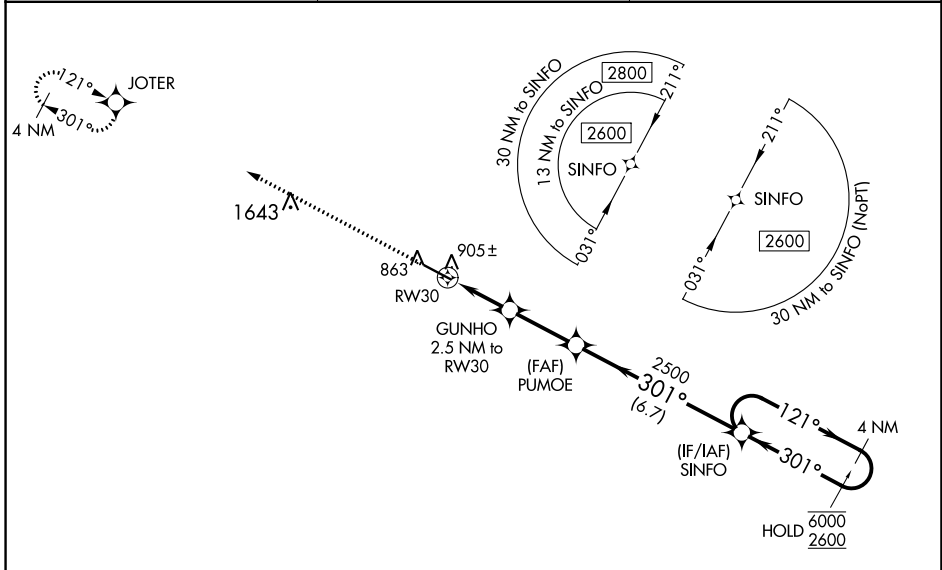
WAAS CH 58215 W30A	APP CRS 301°	Rwy ldg TDZE Apt Elev	4962 796 798
--	------------------------	-----------------------------	---

RNAV (GPS) RWY 30

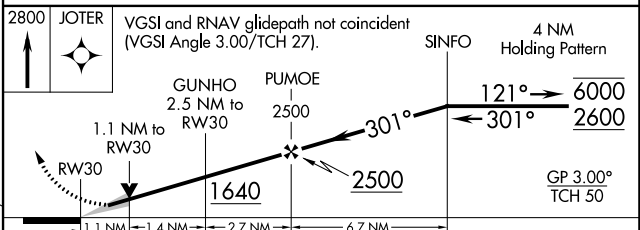
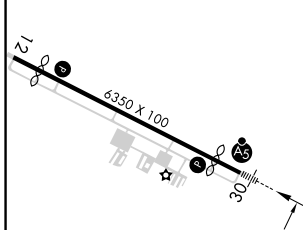
THOMASTON-UPSON COUNTY (OPN)

RNP APCH-GPS.		MALSR 	MISSED APPROACH: Climb to 2800 direct JOTER and hold.
<p> For uncompensated Baro-VNAV systems, LNAV/VNAV NA below -16°C or above 54°C. For inop ALS, increase LNAV/VNAV all Cats visibility to 7/8 SM and LNAV Cat C/D visibility to 1 SM.</p>			

AWOS-3 133.975	ATLANTA APP CON * 124.2 279.6	UNICOM 122.8 (CTAF)
--------------------------	---	-------------------------------



ELEV 798	D	TDZE 796
----------	----------	----------



CATEGORY	A	B	C	D
LPV DA		996-1/2	200 (200-1/2)	
LNAV/VNAV DA		1086-1/2	290 (300-1/2)	
LNAV MDA	1160-1/2	364 (400-1/2)	1160-5/8	364 (400-5/8)
CIRCLING	1220-1 422 (500-1)	1260-1 462 (500-1)	1260-1 1/2 462 (500-1 1/2)	1680-3 882 (900-3)

SE-4, 22 FEB 2024 to 21 MAR 2024

SE-4, 22 FEB 2024 to 21 MAR 2024