

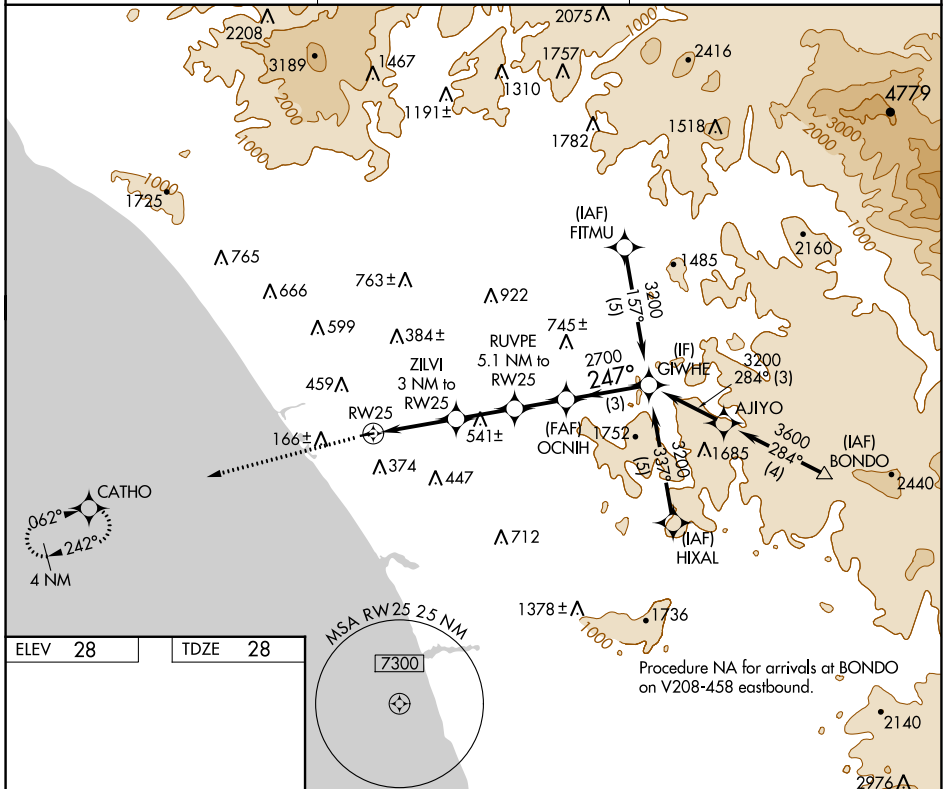
APP CRS 247°	Rwy Idg 2712
	TDZE 28
	Apt Elev 28

RNAV (GPS) RWY 25

BOB MAXWELL MEML AIRFIELD (OKB)

RNP APCH-GPS.	MISSED APPROACH: Climb to 2000 direct CATHO and hold.
<p>▼ Circling Rwy 7 NA at night.</p> <p>▲ Rwy 25 helicopter visibility reduction below ¾ SM NA.</p>	

ASOS 127.8	SOCAL APP CON 127.3 323.0	UNICOM 122.725 (CTAF) 0
----------------------	-------------------------------------	-----------------------------------



Procedure NA for arrivals at BOND0 on V208-458 eastbound.

ELEV 28	TDZE 28					
		2000	CATHO			
		ZILVI 3 NM to RW25	RUVPE 5.1 NM to RW25	OCNH	GWHE	
		2.2 NM to RW25	3.52° TCH 55	2700	3200	
		2.2 NM	0.8	2.1 NM	1.9 NM	3 NM
CATEGORY	A	B	C	D		
LNAV MDA	920-1¼	892 (900-1¼)		NA		
CIRCLING	920-1¼	892 (900-1¼)		NA		

SW-3, 22 FEB 2024 to 21 MAR 2024

SW-3, 22 FEB 2024 to 21 MAR 2024

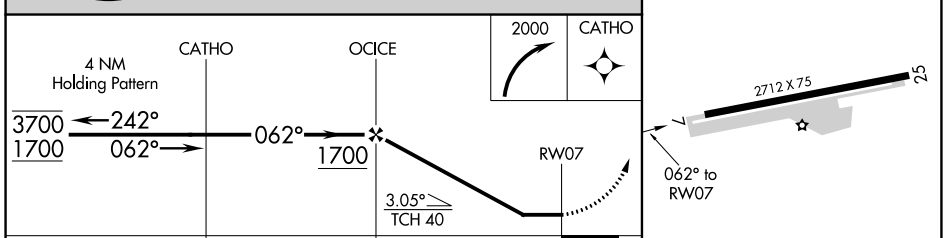
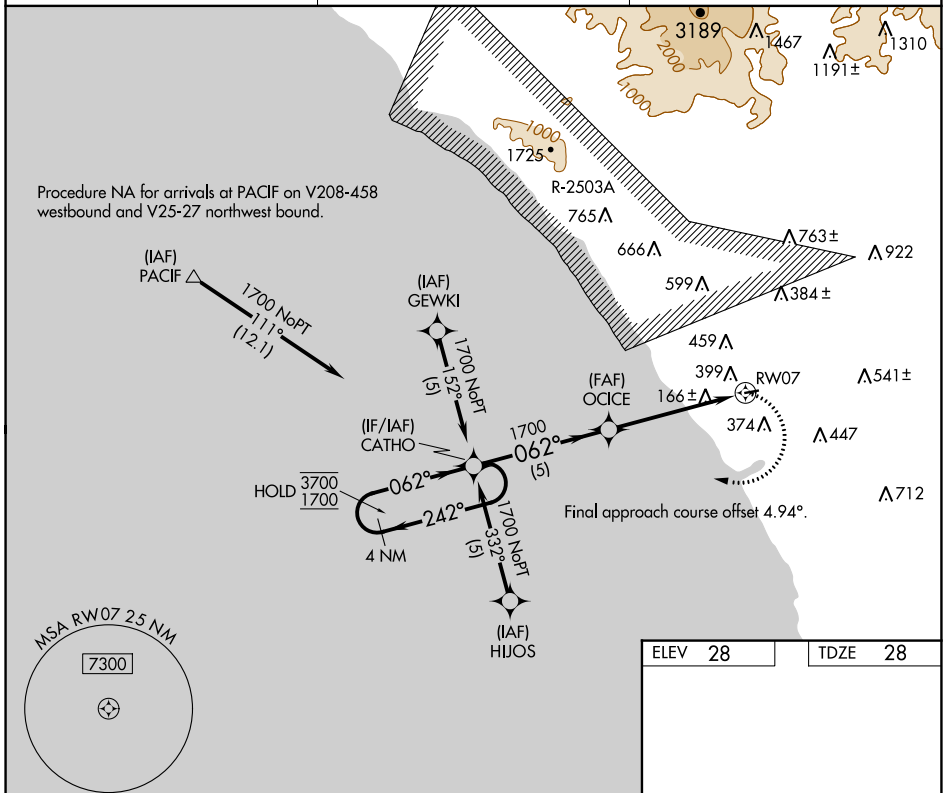
APP CRS	Rwy ldg	2712
062°	TDZE	28
	Apt Elev	28

RNAV (GPS) RWY 7

BOB MAXWELL MEML AIRFIELD (OKB)

RNP APCH-GPS.	MISSED APPROACH: Climbing right turn to 2000 direct CATHO and hold.
<p>▼ Rwy 7 helicopter visibility reduction below 1 SM NA.</p> <p>▲ NA Rwy 7 Straight-in and Circling minimums NA at night.</p>	

ASOS 127.8	SOCAL APP CON 127.3 323.0	UNICOM 122.725 (CTAF)
----------------------	-------------------------------------	---------------------------------



ELEV	28	TDZE	28
CATEGORY	A	B	C
LNAV MDA	660-1	632 (700-1)	NA
CIRCLING	720-1 692 (700-1)	840-1¼ 812 (900-1¼)	NA
	MIRL Rwy 7-25		REIL Rwy 25

SW-3, 22 FEB 2024 to 21 MAR 2024

SW-3, 22 FEB 2024 to 21 MAR 2024

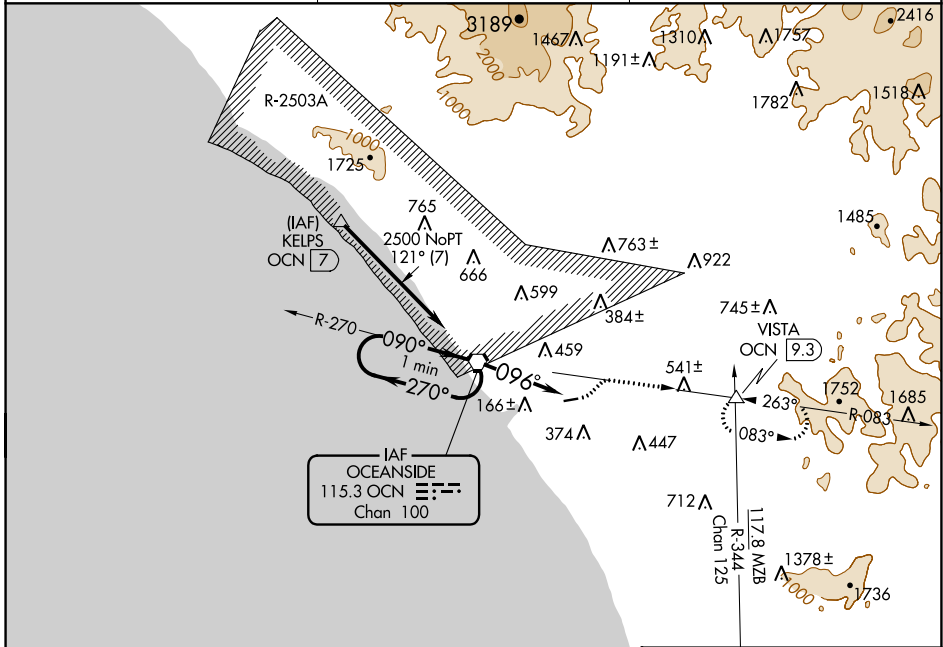
VORTAC OCN 115.3 Chan 100	APP CRS 096°	Rwy Idg TDZE Apt Elev N/A N/A 28
---	------------------------	--

VOR-A

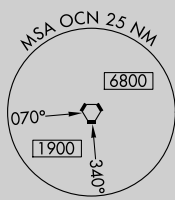
BOB MAXWELL MEML AIRFIELD (OKB)

Helicopter visibility reduction below 1 SM NA. Night Landing: Rwy 6 NA.	MISSED APPROACH: Climbing left turn to 4000 via heading 030° and OCN R-083 to VISTA INT/OCN 9.3 DME and hold.
--	---

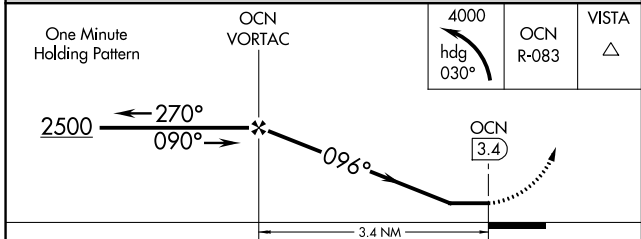
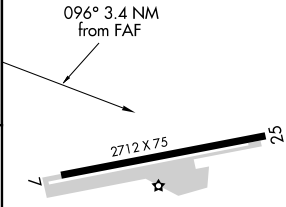
ASOS 127.8	SOCAL APP CON 127.3 323.0	UNICOM 122.725 (CTAF)
----------------------	-------------------------------------	---------------------------------



IAF
OCEANSIDE
115.3 OCN
Chan 100



ELEV 28



MIRL Rwy 7-25
REIL Rwy 25

CATEGORY	A	B	C	D	FAF to MAP 3.4 NM					
	1140-1¼ 1112 (1200-1¼)	1140-1½ 1112 (1200-1½)	NA	NA	Knots	60	90	120	150	180
CIRCLING					Min:Sec	3:24	2:16	1:42	1:21	1:08

VOR-A

SW-3, 22 FEB 2024 to 21 MAR 2024

SW-3, 22 FEB 2024 to 21 MAR 2024