

LOC - NSI	APCH CRS	Rwy Idg	10,002
109.7	301°	TDZE	506
		Appt Elev	506

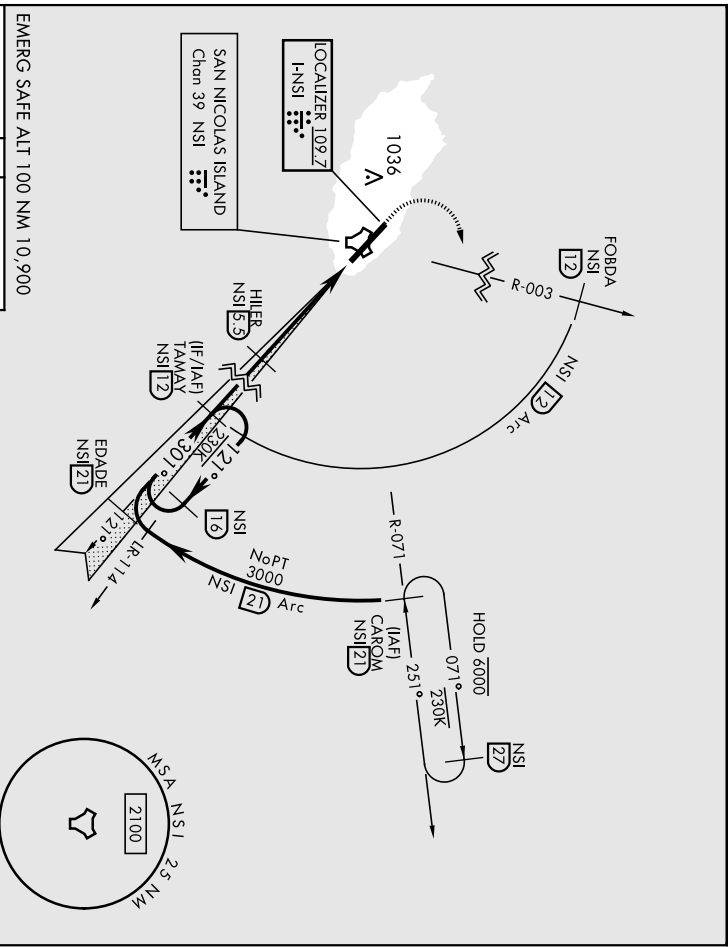
AL-5162 (USN)

SAN NICOLAS ISLAND NOLF (KNSI)

DME required for ILS procedure. RADAR or TACAN required.
 * Circling not authorized W of Rwy 12-30.

MISSED APPROACH: Climb to 1000 via heading 307° then climbing right turn to 3000 to intercept NSI TACAN R-003 to FOBDA, then arc E of NSI 12 mile arc to TAMAY and hold.

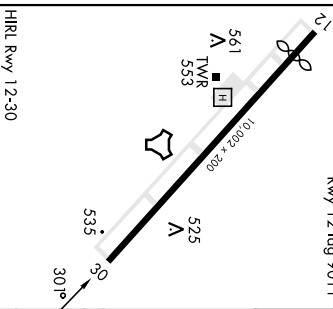
TOWER ★
126.85 379.3



EMERG SAFE ALT 100 NM 10,900

ELEV	506	TDZE	506
------	-----	------	-----

Rwy 12 Idg 9011'

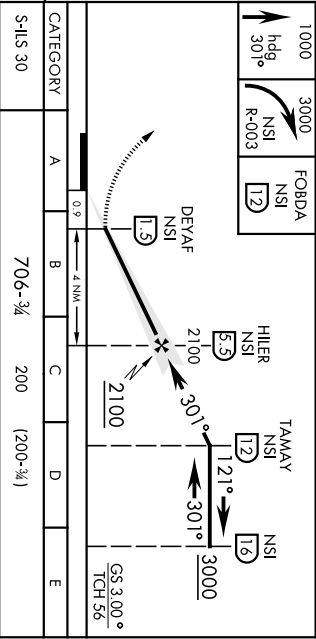


HIRL Rwy 12-30

FAF to MAP 4.1NM

Knots	60	90	120	150	180
Min:Sec	4:00	2:40	2:00	1:36	1:20

S-LOC 30	860-1	960-1	960-1½	1060-2	554 (600-2)
CIRCLING *	354 (400-1)	454 (500-1)	454 (500-1½)		



SAN NICOLAS ISLAND, CALIFORNIA
 Arch 6 18MAY23

33°14'N-119°27'W

SAN NICOLAS ISLAND NOLF (KNSI)

ILS or LOC RWY 30

WAA5	APCH CRS	Rwy Ldg
CH 47673	301°	506
W30A	TDZE	Arpt Elev
		506

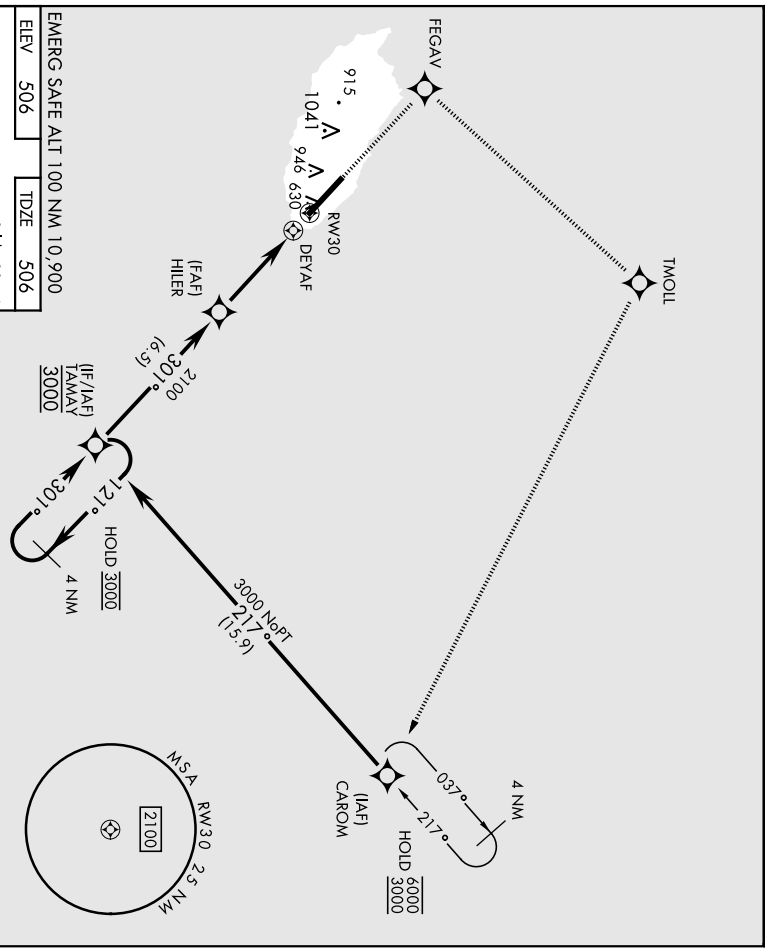
AL-5162 [USN]

RNAV (GPS) RWY 30
SAN NICOLAS ISLAND NOLF (KNSI)

RNP APCH
* Circling not authorized W of Rwy. 12-30.

MISSED APPROACH: Climb to 3000 direct FEGAV, track 031° to TMOLL, track 099° to CAROM and hold.

TOWER ★
126.85 379.3



EMERG SAFE ALT 100 NM 10,900

ELEV	506	TDZE	506
------	-----	------	-----

Rwy 12 Ldg 9011'

CATEGORY	A	B	C	D	E
	LPV DA	706-¾	200	1200-¾	
UNAV MDA	880-1	374 (400-1)	960-1½	920-1½	980-1¾
CIRCLING*	374 (400-1)	454 (500-1)	454 (500-1½)	414 (500-1¾)	474 (500-1¾)
	374 (400-1)	454 (500-1)	454 (500-1½)	1060-2	554 (600-2)

HRL Rwy 12-30
SAN NICOLAS ISLAND, CALIFORNIA
Orig 18MAY23

33°14'N-119°27'W
SAN NICOLAS ISLAND NOLF (KNSI)
RNAV (GPS) RWY 30

TACAN RWY 30

TACAN NSI Chan 39	APCH CRS TDZE Elev 506	Rwy Idg 506	TDZE Elev 506
--------------------------	-------------------------------	--------------------	----------------------

AL-5162 (USN)

SAN NICOLAS ISLAND NOLF

(KNSI)

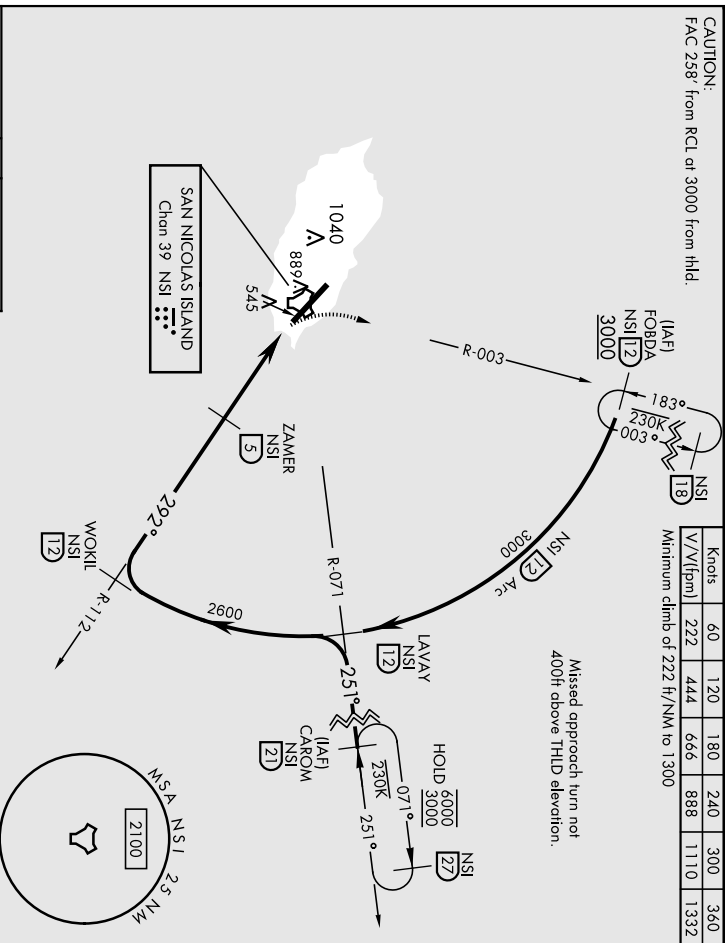
RADAR required.

▼ * Circling not authorized W of Rwy 12-30.

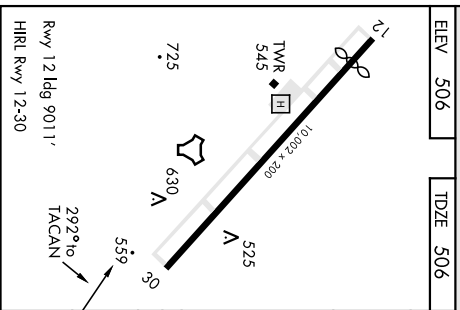
MISSED APPROACH: Climbing right turn to 3000, incrp the NSI TACAN R-003 to FOBDA and hold.

TOWER *
126.85 379.3

CAUTION: FAC 258' from RCL or 3000 from HLD.	Knobs	60	120	180	240	300	360
	V/(ft/min)	222	444	666	888	1110	1332
	Minimum climb of 222 ft/NM to 1300						



EMERG SAFE ALT 100 NM 10,900



ELEV 506	TDZE 506					
3000 NSI R-003	FOBDA NSI (12)					
TACAN ZAPSU (13)	ZAMER (5)					
WOKIL NSI (12)	WOKIL R-112 (12)					
LAVAY NSI (12)	LAVAY R-071 (12)					
CAROM NSI (21)	CAROM R-071 (21)					
ICG 30	2272°					
CATEGORY S-30	A	B	C	D	E	
0.8	3.5 NM					
860-1 (400-1)	960-1 (400-1)	960-1½ (500-1½)	1060-2 (600-2)			
354 (400-1)	454 (500-1)	454 (500-1½)	554 (600-2)			
820-1 (400-1)	314 (400-1)					

Rwy 12 Idg 9011'

HRL Rwy 12-30

297° to TACAN

559

525

630

725

10,000 x 200

TWR 545

545

3000 NSI R-003

FOBDA NSI (12)

TACAN ZAPSU (13)

ZAMER (5)

WOKIL NSI (12)

WOKIL R-112 (12)

LAVAY NSI (12)

LAVAY R-071 (12)

CAROM NSI (21)

CAROM R-071 (21)

ICG 30

2272°

0.8

3.5 NM

820-1 (400-1)

314 (400-1)

860-1 (400-1)

960-1 (400-1)

960-1½ (500-1½)

1060-2 (600-2)

354 (400-1)

454 (500-1)

454 (500-1½)

554 (600-2)