

(ALCRN.ALCRN1) 23166

AL-5570 (FAA)

ALCRN ONE ARRIVAL (RNAV)

JACKSONVILLE, FLORIDA

RNAV 1 - DME/DME/IRU or GPS.

RADAR required.

JACKSONVILLE APP CON

127.0 269.9

CRG ATIS

125.4

JAX D-ATIS

125.85

KNIP ATIS

124.35 290.425

KNRB ATIS *

236.775

VQQ ATIS

125.275

ALLMA
FL230

5000
*1700
163°
(36)

ALCRN
14000
12000

160°
(31)

141°
(35)

NOTE: Jet and turboprop aircraft only.

NOTE: Landing KJAX: Turboprop aircraft only.

SNKEM
4000

Ldg KJAX/KCRG/KNRB

AAMOS
6000

Ldg KVQQ/KNIP

160°

141°

JACKSONVILLE
INTL

MAYPORT NS
(ADM DAVID L MCDONALD FLD)

JACKSONVILLE EXEC
AT CRAIG

JACKSONVILLE NAS
(TOWERS FLD)

CECIL

NOTE: Chart not to scale.

ARRIVAL ROUTE DESCRIPTION

ALLMA TRANSITION (ALLMA.ALCRN1)

LANDING KJAX/KNRB/KCRG: From ALCRN on track 141° to cross SNKEM at or above 4000, then on track 141°. Expect RADAR vectors to final approach course.

LANDING KVQQ/KNIP: From ALCRN on track 160° to cross AAMOS at or above 6000, then on track 160°. Expect RADAR vectors to final approach course.

ALCRN ONE ARRIVAL (RNAV)

(ALCRN.ALCRN1) 15JUN23

JACKSONVILLE, FLORIDA

SE-3, 22 FEB 2024 to 21 MAR 2024

SE-3, 22 FEB 2024 to 21 MAR 2024

(HOTAR.HOTAR1) 23110

AL-5570 (FAA)

HOTAR ONE ARRIVAL (RNAV)

JACKSONVILLE, FLORIDA

JACKSONVILLE APP CON
 119.0 127.0 269.9 292.15 (270°-090°)
 127.775 377.075 (181°-269°)
 124.9 308.4 (091°-180°)
 CRG ATIS 125.4
 JAX D-ATIS 125.85
 KNIP ATIS 124.35 290.425
 KNRB ATIS * 236.775
 SGJ ATIS 119.625
 VQQ ATIS 125.275

ARRIVAL ROUTE DESCRIPTION

BASLE TRANSITION (BASLE.HOTAR1)

From JABOR on track 191° to HOTAR.

LANDING JAX: From HOTAR on track 263° to YEJWO.

Expect radar vectors to an ILS or LOC final approach course.

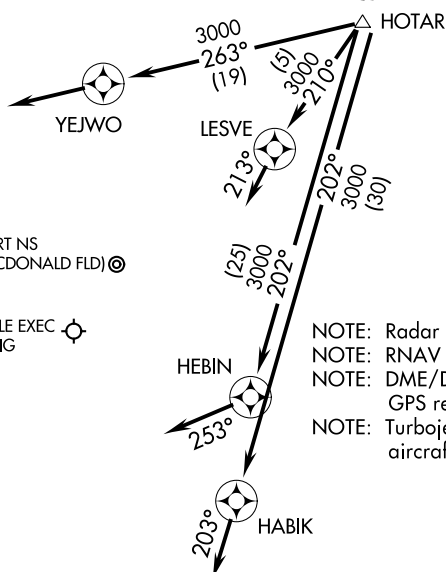
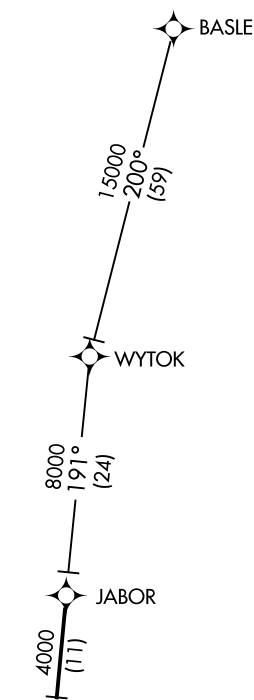
LANDING NRB and CRG: From HOTAR on track 210° to LESVE, then on 213° heading or as assigned by ATC.

Expect radar vectors to final approach course.

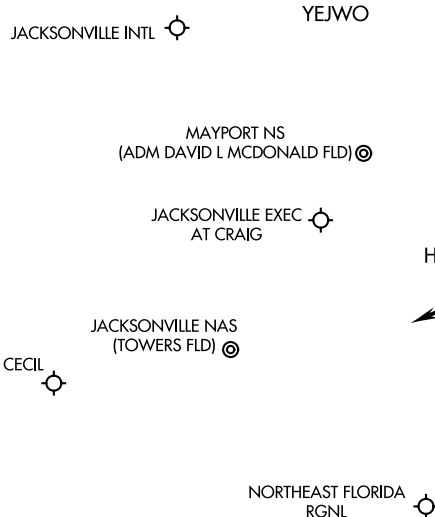
LANDING SGJ: From HOTAR on track 202° to HABIK, then on 203° heading or as assigned by ATC. Expect radar vectors to final approach course.

LANDING VQQ and NIP: From HOTAR on track 202° to HEBIN, then on 253° heading or as assigned by ATC. Expect radar vectors to final approach course.

NOTE: YEJWO Transition-ATC assigned only.



NOTE: Radar required.
 NOTE: RNAV 1.
 NOTE: DME/DME/IRU or GPS required.
 NOTE: Turbojet and turboprop aircraft only.



NOTE: Chart not to scale.

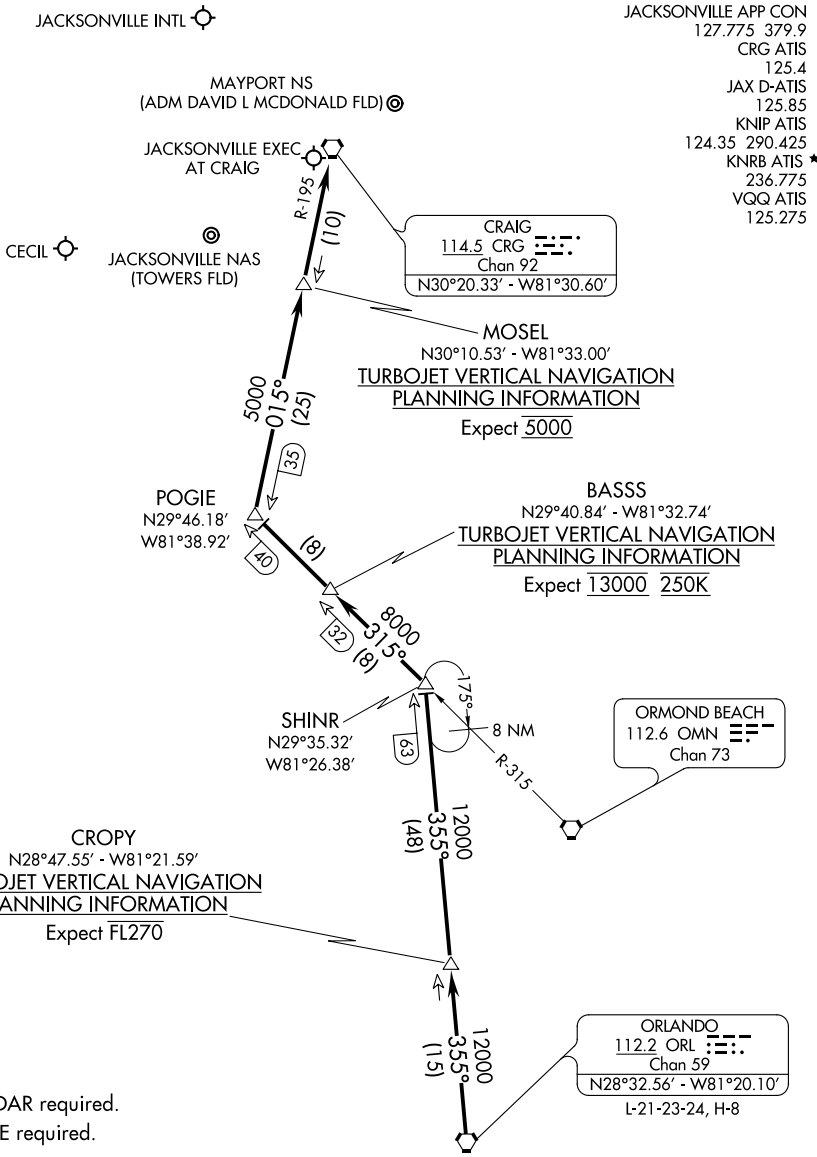
HOTAR ONE ARRIVAL (RNAV)

(HOTAR.HOTAR1) 17OCT13

JACKSONVILLE, FLORIDA

SE-3, 22 FEB 2024 to 21 MAR 2024

SE-3, 22 FEB 2024 to 21 MAR 2024



SE-3, 22 FEB 2024 to 21 MAR 2024

SE-3, 22 FEB 2024 to 21 MAR 2024

NOTE: RADAR required.
 NOTE: DME required.
 NOTE: Chart not to scale.

ARRIVAL ROUTE DESCRIPTION

From over ORL VORTAC on ORL R-355 to SHINR, then on OMN R-315 to POGIE, then on CRG R-195 to CRG VORTAC. Expect RADAR vectors to final approach course after CRG VORTAC.