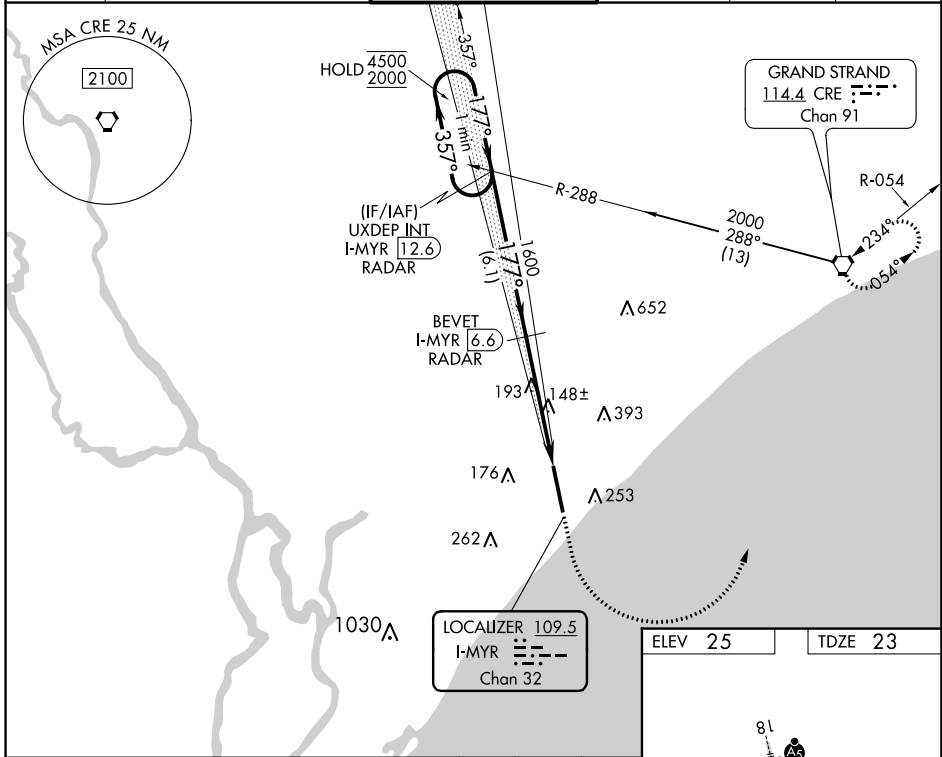


LOC/DME I-MYR 109.5 Chan 32	APP CRS 177°	Rwy Idg 9503 TDZE 23 Apt Elev 25
--	------------------------	---

ILS RWY 18 (SA CAT I & II)

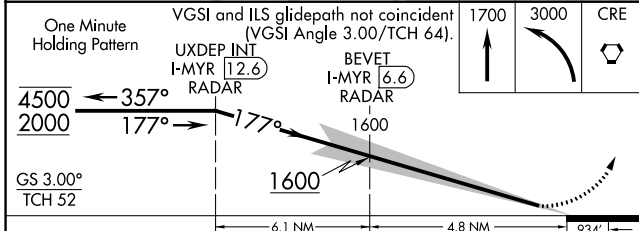
MYRTLE BEACH INTL (MYR)

DME required.		MALSR	MISSED APPROACH: Climb to 1700 then climbing left turn to 3000 direct CRE VORTAC and hold.		
SA CAT I/II: Requires specific OPSPEC, MSPEC, or LOA approval.					
ATIS 123.925	MYRTLE BEACH APP CON * (171° - 321°) 127.4 257.95 (322° - 170°) 119.2 350.3	MYRTLE BEACH TOWER * 128.45 (CTAF) 259.3	GND CON 120.3 275.8	CLNC DEL 120.3	UNICOM 122.95

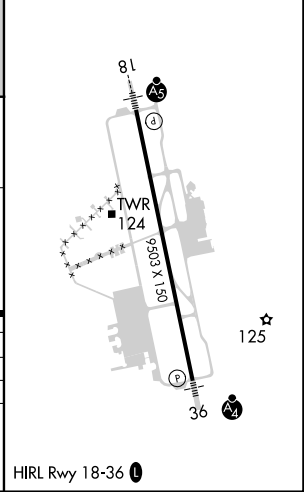


SE-2, 22 FEB 2024 to 21 MAR 2024

SE-2, 22 FEB 2024 to 21 MAR 2024



ELEV 25	TDZE 23
---------	---------



CATEGORY	A	B	C	D
S-ILS 18		SA CAT I RA 156/14	150 DA 173	
S-ILS 18		SA CAT II RA 101/12	100 DA 123	

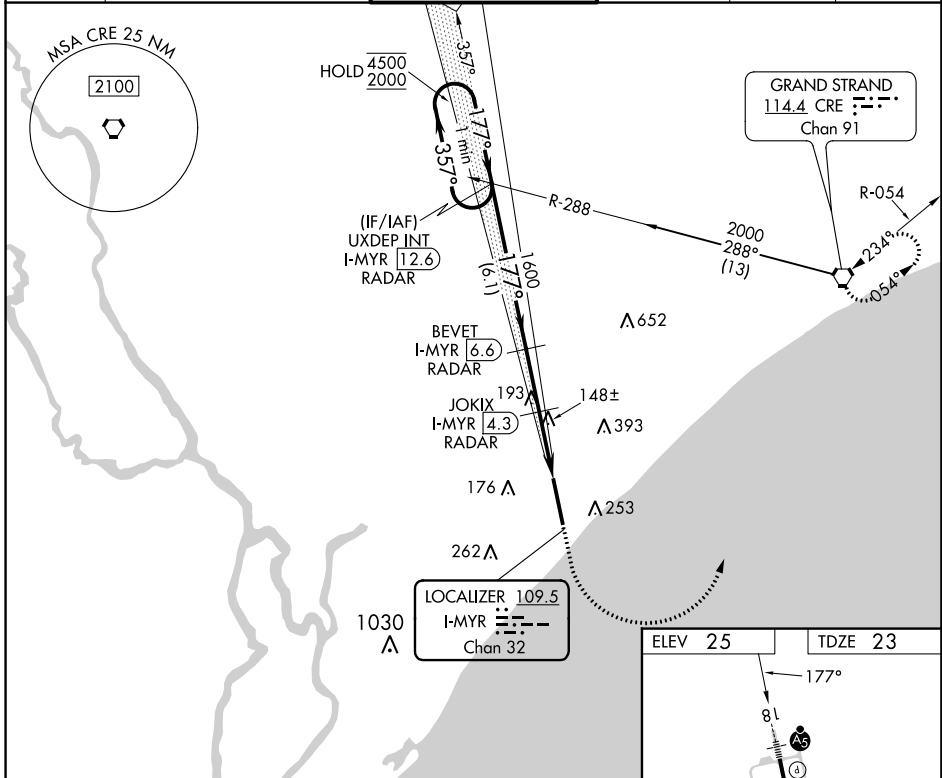
SA CATEGORY I & II SPECIAL AIRCREW & AIRCRAFT CERTIFICATION REQUIRED

LOC/DME I-MYR 109.5 Chan 32	APP CRS 177°	Rwy Idg TDZE 23 Apt Elev 25	9503
---	------------------------	---	-------------

ILS or LOC RWY 18

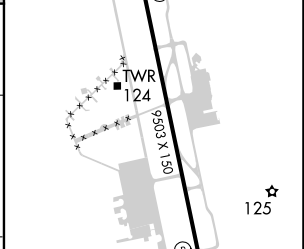
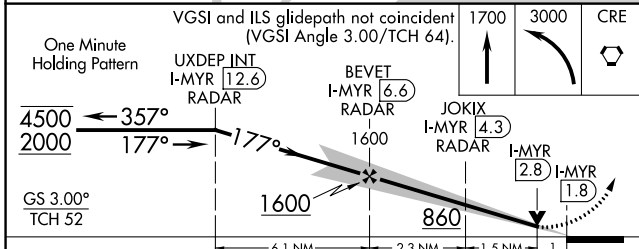
MYRTLE BEACH INTL (MYR)

DME required.		MALSR	MISSED APPROACH: Climb to 1700 then climbing left turn to 3000 direct CRE VORTAC and hold.		
<p>▼ For inop ALS, increase S-ILS 18 Cat E visibility to RVR 4000 and S-LOC 18 Cats C/D/E visibility to RVR 5500.</p> <p>▲ *RVR 1800 authorized with use of FD or AP or HUD to DA.</p>					
ATIS 123.925	MYRTLE BEACH APP CON ★ (171° - 321°) 127.4 257.95 (322° - 170°) 119.2 350.3	MYRTLE BEACH TOWER ★ 128.45 (CTAF) 0 259.3	GND CON 120.3 275.8	CLNC DEL 120.3	UNICOM 122.95



SE-2, 22 FEB 2024 to 21 MAR 2024

SE-2, 22 FEB 2024 to 21 MAR 2024



One Minute Holding Pattern	UXDEP INT I-MYR (12.6) RADAR	BEVET I-MYR (6.6) RADAR	JOKIX I-MYR (4.3) RADAR	I-MYR (2.8)	I-MYR (1.8)
GS 3.00° TCH 52	6.1 NM	2.3 NM	1.5 NM	1	
CATEGORY	A	B	C	D	E
S-ILS 18 *	223/24 200 (200-½)				
S-LOC 18	400/24	377 (400-½)	400/35		377 (400-¾)
CIRCLING	560-1	535 (600-1)	700-2 675 (700-2)	700-2¼ 675 (700-2¼)	700-2½ 675 (700-2½)

ELEV 25	TDZE 23
HIRL Rwy 18-36	

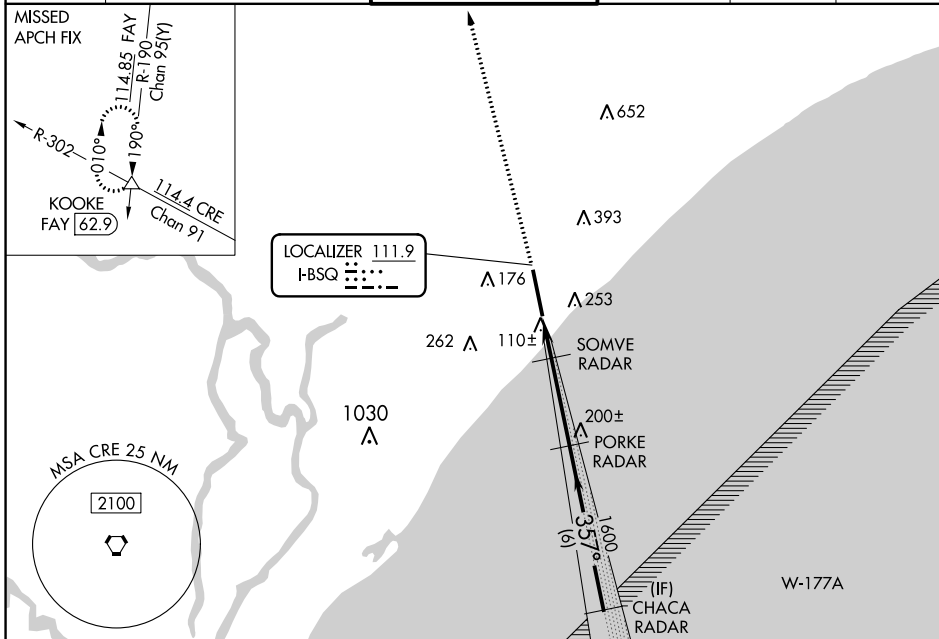
LOC I-BSQ	APP CRS	Rwy Idg	9503
111.9	357°	TDZE	25
		Apt Elev	25

ILS or LOC RWY 36

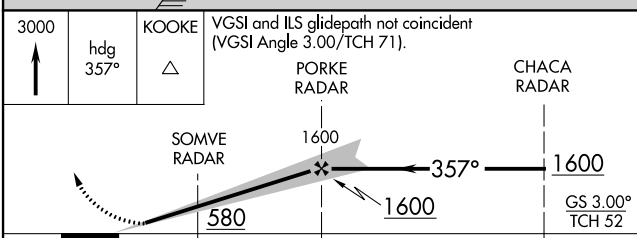
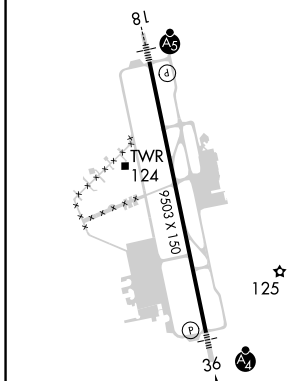
MYRTLE BEACH INTL (MYR)

RADAR required.		MALSF	MISSED APPROACH: Climb to 3000 on heading 357° expect RADAR vectors to KOOKE INT/FAY 62.9 DME and hold.
For inop ALS increase S-LOC 36 Cats D/E visibility to RVR 5000.			

ATIS	MYRTLE BEACH APP CON ★ (171° - 321°) 127.4 257.95 (322° - 170°) 119.2 350.3	MYRTLE BEACH TOWER ★ 128.45 (CTAF) 259.3	GND CON	CLNC DEL	UNICOM
123.925			120.3 275.8	120.3	122.95



ELEV 25	TDZE 25
---------	---------



CATEGORY	A	B	C	D	E
S-ILS 36	225/40 200 (200-¾)				
S-LOC 36	360/40 335 (400-¾)				
CIRCLING	560-1 535 (600-1)	700-2 675 (700-2)	700-2¼ 675 (700-2¼)	700-2½ 675 (700-2½)	

SE-2, 22 FEB 2024 to 21 MAR 2024

SE-2, 22 FEB 2024 to 21 MAR 2024


WAAS CH 93819 W18A	APP CRS 177°	Rwy Idg 9503 TDZE 23 Apt Elev 25
--	------------------------	---

RNAV (GPS) RWY 18

MYRTLE BEACH INTL (MYR)

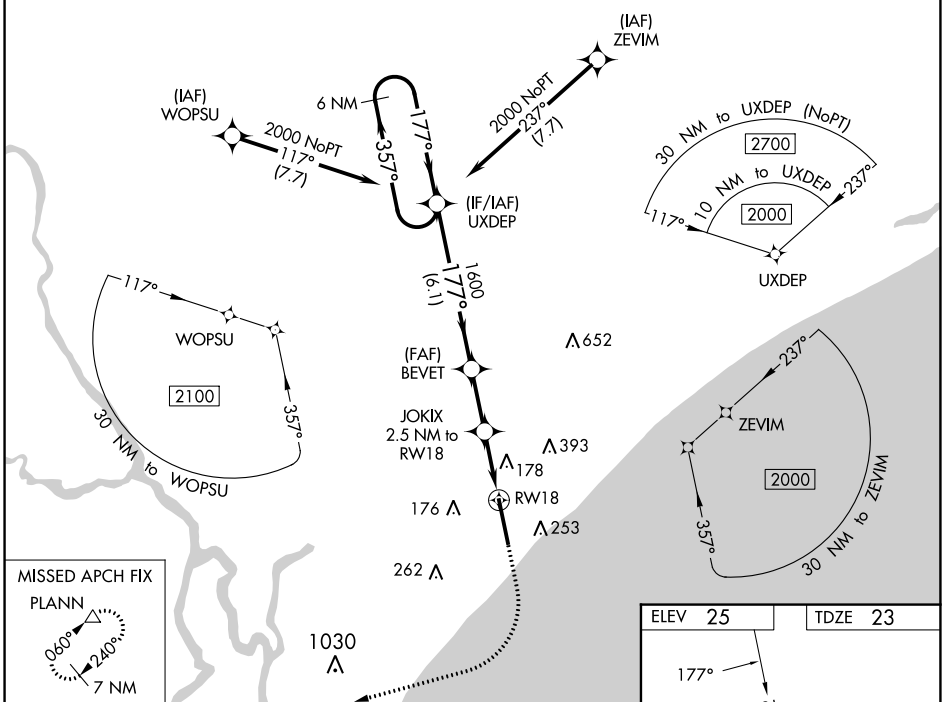
⚠ For uncompensated Baro-VNAV systems, LNAV/VNAV NA below -15°C (5°F) or above 54°C (130°F). DME/DME RNP-0.3 NA. For inop ALS, increase LPV Cat E visibility to RVR 4000, increase LNAV/VNAV Cat E visibility to 1½ SM and increase LNAV Cats C/D/E visibility to RVR 6000.
**** RVR 1800 authorized with use of FD or AP or HUD to DA.**

MALSR



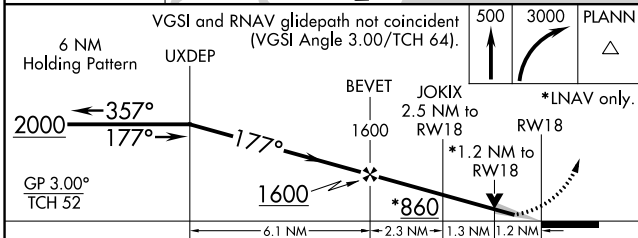
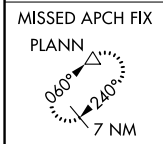
MISSED APPROACH: Climb to 500 then climbing right turn to 3000 direct PLANN and hold, continue climb-in-hold to 3000.

ATIS 123.925	MYRTLE BEACH APP CON * (171° - 321°) 127.4 257.95 (322° - 170°) 119.2 350.3	MYRTLE BEACH TOWER * 128.45 (CTAF) 0 259.3	GND CON 120.3 275.8	CLNC DEL 120.3	UNICOM 122.95
------------------------	---	--	-------------------------------	--------------------------	-------------------------

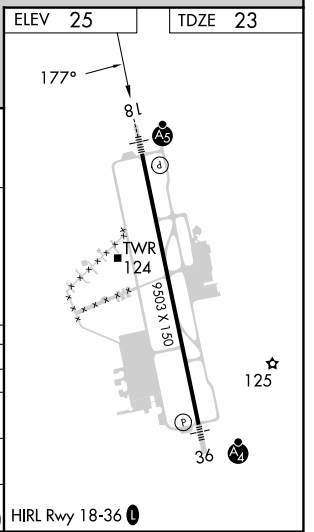


SE-2, 22 FEB 2024 to 21 MAR 2024

SE-2, 22 FEB 2024 to 21 MAR 2024



CATEGORY	A	B	C	D	E
LPV DA**		223/24	200 (200-½)		
LNAV/VNAV DA		465/50	442 (500-1)		
LNAV MDA	440/24	417 (500-½)	440/40	417 (500-¾)	
C CIRCLING	560-1	535 (600-1)	740-2 715 (800-2)	740-2¼ 715 (800-2¼)	740-2½ 715 (800-2½)



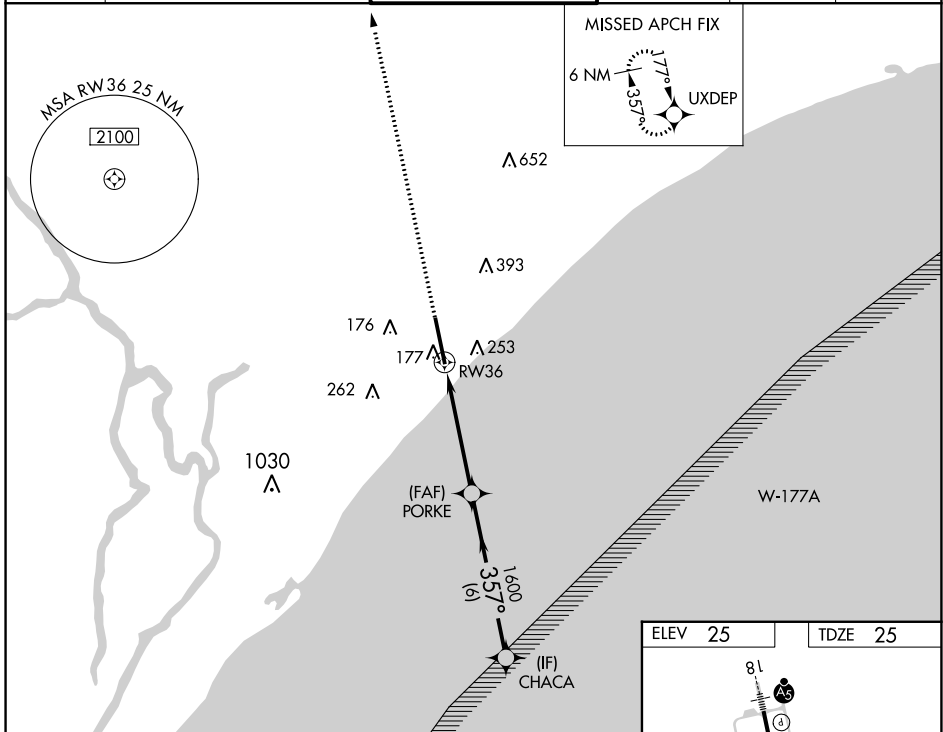
WAAS CH 93719 W36A	APP CRS 357°	Rwy Idg 9503 TDZE 25 Apt Elev 25
--	------------------------	---

RNAV (GPS) RWY 36

MYRTLE BEACH INTL (MYR)

RNP APCH.	<p>⚠ For uncompensated Baro-VNAV systems, LNAV/VNAV NA below -15°C or above 54°C.</p> <p>⚠ Inop table does not apply to LPV. For inop ALS, increase LNAV/VNAV Cats D/E visibility to RVR 6000, and LNAV Cats C/D/E visibility to 1 3/8 SM.</p>	MALSF 	MISSED APPROACH: Climb to 2000 direct UXDEP and hold.
-----------	--	-----------	--

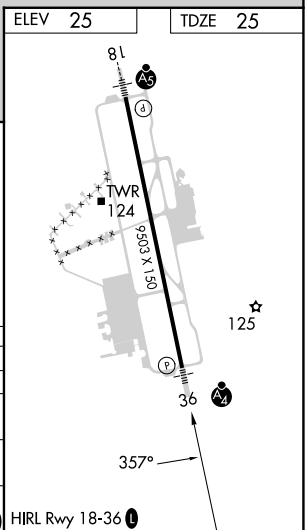
ATIS 123.925	MYRTLE BEACH APP CON * (171° - 321°) 127.4 257.95 (322° - 170°) 119.2 350.3	MYRTLE BEACH TOWER * 128.45 (CTAF) 0 259.3	GND CON 120.3 275.8	CLNC DEL 120.3	UNICOM 122.95
------------------------	---	---	-------------------------------	--------------------------	-------------------------



SE-2, 22 FEB 2024 to 21 MAR 2024

SE-2, 22 FEB 2024 to 21 MAR 2024

2000	UXDEP	VGSi and RNAV glidepath not coincident (VGSi Angle 3.00/TCH 71).			
*LNAV only.					
CATEGORY	A	B	C	D	E
LPV DA	225/40		200 (200-3/4)		
LNAV/VNAV DA	374/45		349 (400-7/8)		
LNAV MDA	480/40 455 (500-3/4)		480/50 455 (500-1)		
CIRCLING	560-1 535 (600-1)		740-2 715 (800-2)	740-2 1/4 715 (800-2 1/4)	740-2 1/2 715 (800-2 1/2)

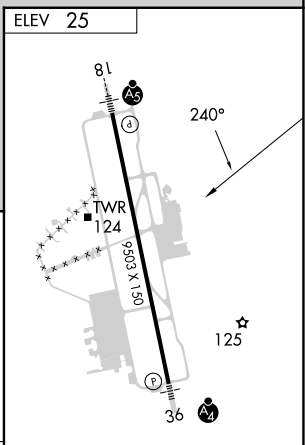
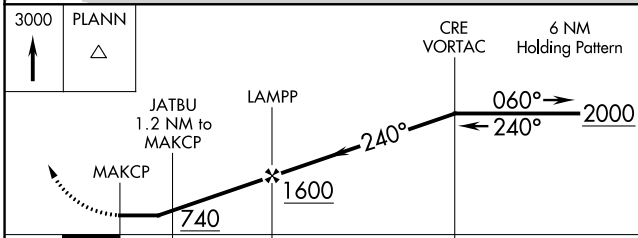
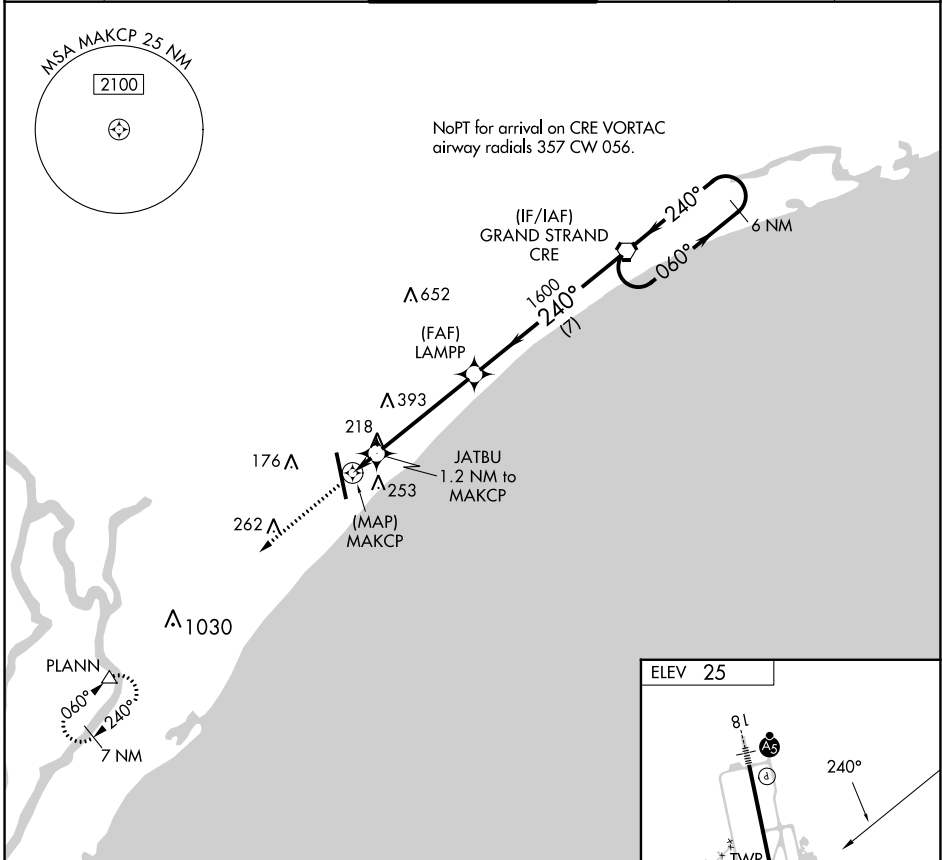


APP CRS 240°	Rwy Idg TDZE Apt Elev	N/A N/A 25
------------------------	-----------------------------	---------------------------------------

RNAV (GPS)-A

MYRTLE BEACH INTL (MYR)

		DME/DME RNP-0.3 NA.	MISSED APPROACH: Climb to 3000 direct PLANN and hold.		
ATIS 123.925	MYRTLE BEACH APP CON ★ (171° - 321°) 127.4 257.95 (322° - 170°) 119.2 350.3	MYRTLE BEACH TOWER ★ 128.45 (CTAF) 0 259.3	GND CON 120.3 275.8	CLNC DEL 120.3	UNICOM 122.95



CATEGORY	A	B	C	D	E
C CIRCLING	560-1	535 (600-1)	740-2 715 (800-2)	740-2¼ 715 (800-2¼)	740-2½ 715 (800-2½)

HIRL Rwy 18-36

SE-2, 22 FEB 2024 to 21 MAR 2024

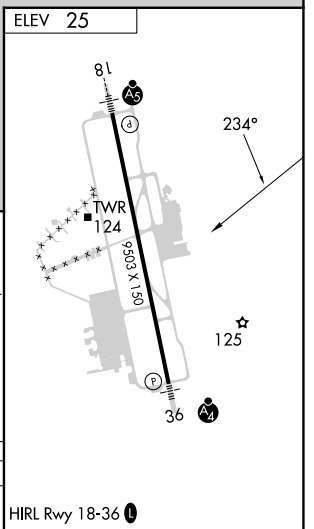
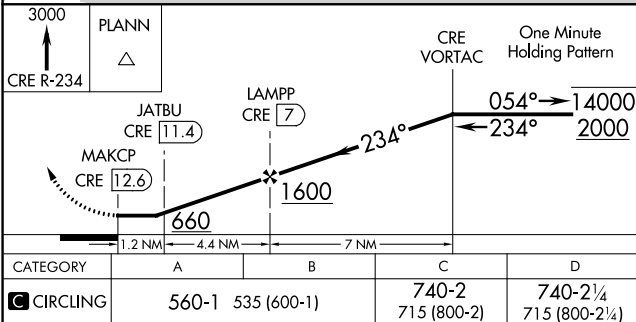
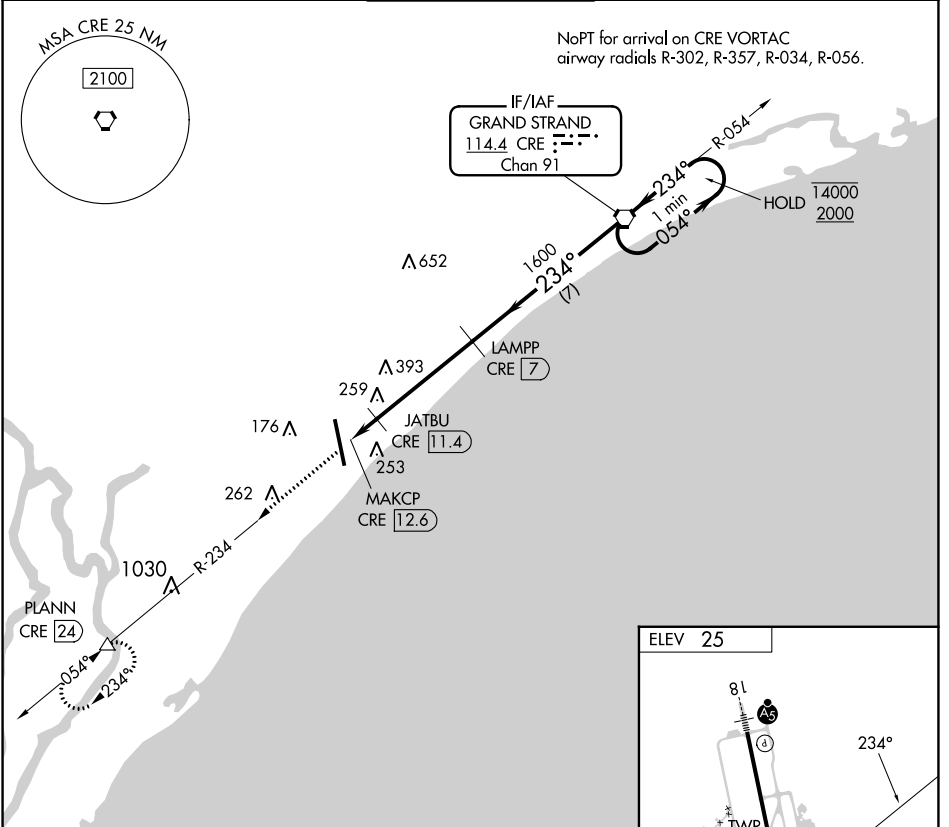
SE-2, 22 FEB 2024 to 21 MAR 2024

VORTAC CRE 114.4 Chan 91	APP CRS 234°	Rwy Idg TDZE Apt Elev	N/A N/A 25
--	------------------------	-----------------------------	---------------------------------------

VOR-A

MYRTLE BEACH INTL (MYR)

DME required.		MISSED APPROACH: Climb to 3000 on CRE VORTAC R-234 to PLANN/24 DME and hold, continue climb-in-hold to 3000.			
ATIS 123.925	MYRTLE BEACH APP CON * (171° - 321°) 127.4 257.95 (322° - 170°) 119.2 350.3	MYRTLE BEACH TOWER * 128.45 (CTAF) 259.3	GND CON 120.3 275.8	CLNC DEL 120.3	UNICOM 122.95



CATEGORY	A	B	C	D
CIRCLING	560-1	535 (600-1)	740-2 715 (800-2)	740-2½ 715 (800-2½)

HIRL Rwy 18-36

SE-2, 22 FEB 2024 to 21 MAR 2024

SE-2, 22 FEB 2024 to 21 MAR 2024