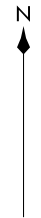


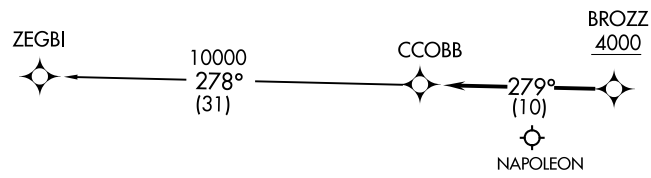
ATIS
125.325 270.1
CLNC DEL
128.3 275.8
GND CON
128.3 275.8
SELFIDGE TOWER ★
120.15 225.4
SELFIDGE DEP CON
119.6 391.9



TAKEOFF MINIMUMS:
Rwy 1: Standard.
Rwy 19: Standard with minimum climb
of 234' per NM to 1500.

- NOTE: RNAV 1.
- NOTE: RADAR required.
- NOTE: DME/DME/IRU or GPS required.
- NOTE: Turbojet departures at/above 10000, maintain 280K until advised by ATC.
- NOTE: For use by aircraft filed at or below FL220, or as assigned by ATC.
- NOTE: CAUTION: Parachute jumping 6 NM SW of BROZZ, 3 NM radius of Napoleon Airport (3NP) at or below 17999 (SR-SS).

**TOP ALTITUDE:
ASSIGNED BY ATC**



NOTE: Chart not to scale.

▼

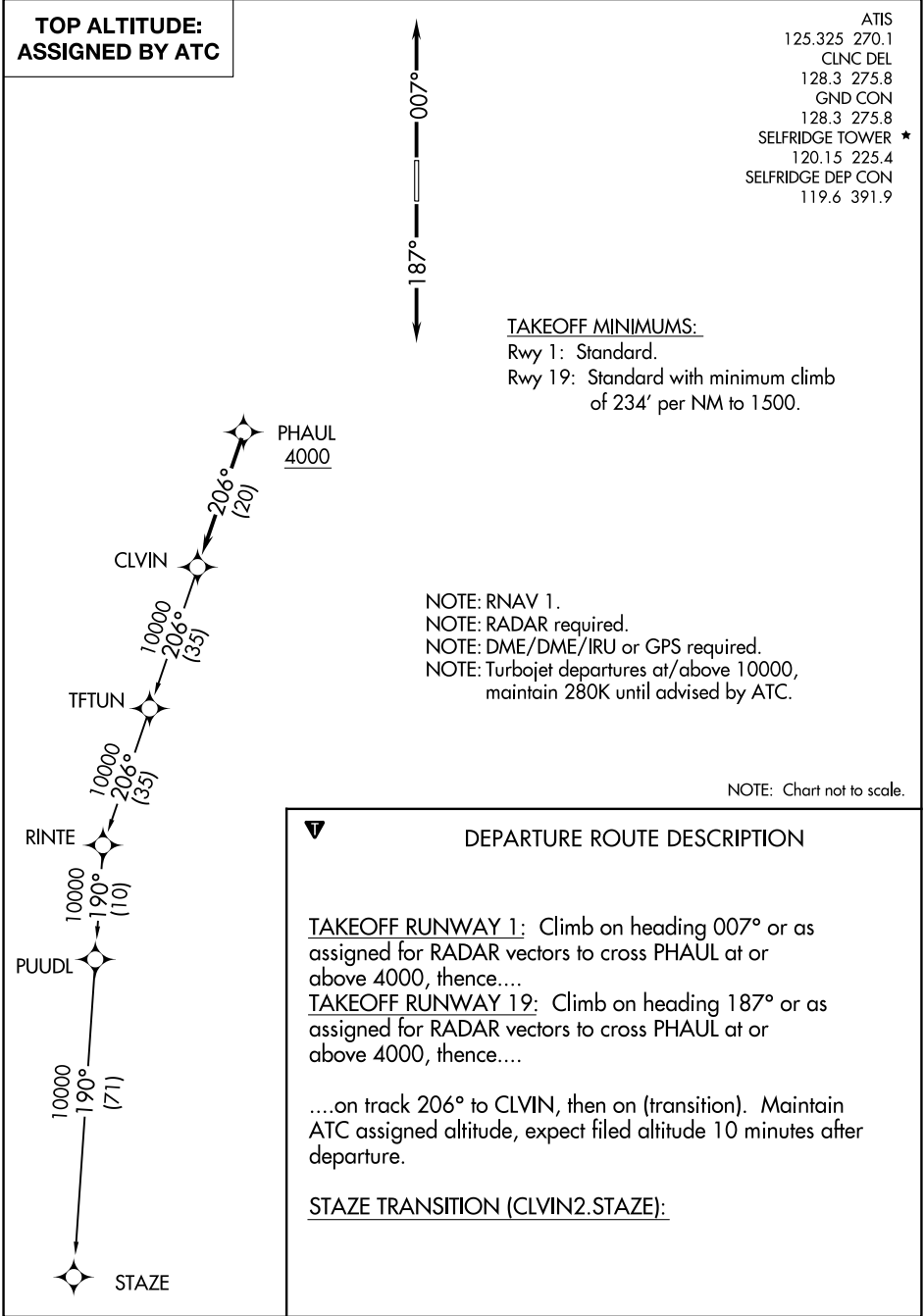
DEPARTURE ROUTE DESCRIPTION

TAKEOFF RUNWAY 1: Climb on heading 007° or as assigned for RADAR vectors to cross BROZZ at or above 4000, thence....

TAKEOFF RUNWAY 19: Climb on heading 187° or as assigned for RADAR vectors to cross BROZZ at or above 4000, thence....

....on track 279° to CCOBB, then on (transition). Maintain ATC assigned altitude, expect filed altitude 10 minutes after departure.

ZEGBI TRANSITION (CCOBB2.ZEGBI):



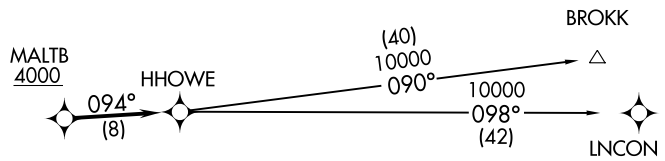
(HHOWE3.HHOWE) 19339
HHOWE THREE DEPARTURE (RNAV) A1-276 (FAA)
SELF RIDGE ANGB (MTTC)
MOUNT CLEMENS, MICHIGAN

TOP ALTITUDE:
ASSIGNED BY ATC

NOTE: RNAV 1.
NOTE: RADAR required.
NOTE: DME/DME/IRU or GPS required.
NOTE: Turbojet departures at/above 10000, maintain 280K until advised by ATC.
NOTE: BROKK TRANSITION: For use by flights filed at or below FL270, or as assigned by ATC.

TAKEOFF MINIMUMS:
Rwy 1: Standard.
Rwy 19: Standard with minimum climb of 234' per NM to 1500.

NOTE: Chart not to scale.



DEPARTURE ROUTE DESCRIPTION

TAKEOFF RUNWAY 1: Climb on heading 007° or as assigned for RADAR vectors to cross MALTB at or above 4000, thence....
TAKEOFF RUNWAY 19: Climb on heading 187° or as assigned for RADAR vectors to cross MALTB at or above 4000, thence....
....on track 094° to HHOWE, then on (transition). Maintain ATC assigned altitude, expect filed altitude 10 minutes after departure.
BROKK TRANSITION (HHOWE3.BROKK)
LNCON TRANSITION (HHOWE3.LNCON)

HHOWE THREE DEPARTURE (RNAV)
(HHOWE3.HHOWE) 05DEC19
MOUNT CLEMENS, MICHIGAN
SELF RIDGE ANGB (MTTC)

KAYLN TWO DEPARTURE (RNAV)
(KAYLN2.KAYLN) 15AUG19

MOUNT CLEMENS, MICHIGAN
SELFRIAGE ANGB (MTTC)

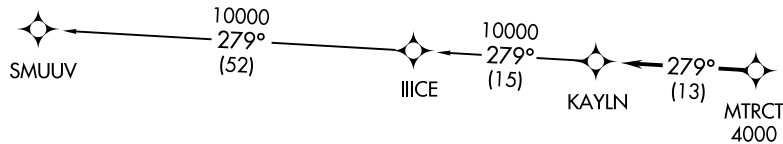
**TOP ALTITUDE:
ASSIGNED AT ATC**

TAKEOFF MINIMUMS:

Rwy 1: Standard.

Rwy 19: Standard with minimum climb
of 234' per NM to 1500.

ATIS
125.325 270.1
CLNC DEL
128.3 275.8
GND CON
128.3 275.8
SELFRIAGE TOWER ★
120.15 225.4
SELFRIAGE DEP CON
119.6 391.9



NOTE: RNAV 1.
NOTE: RADAR required.
NOTE: DME/DME/IRU or GPS required.
NOTE: Turbojet departures at/above 10000,
maintain 280K until advised by ATC.

NOTE: Chart not to scale.



DEPARTURE ROUTE DESCRIPTION

TAKEOFF RUNWAY 1: Climb on heading 007° or as assigned for RADAR vectors to cross MTRCT at or above 4000, thence....

TAKEOFF RUNWAY 19: Climb on heading 187° or as assigned for RADAR vectors to cross MTRCT at or above 4000, thence....

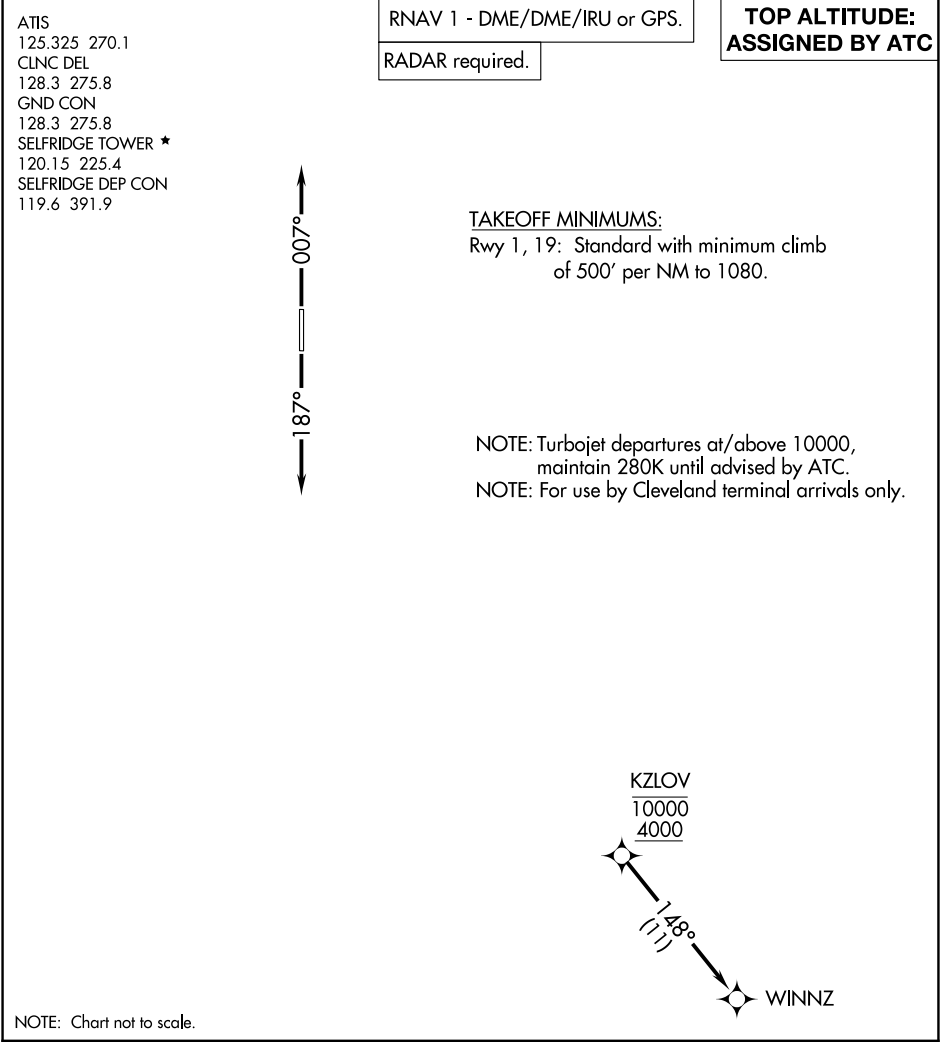
....on track 279° to KAYLN, then on (transition). Maintain ATC assigned altitude, expect filed altitude 10 minutes after departure.

SMUUV TRANSITION (KAYLN2.SMUUV):

(KAYLN2.KAYLN) 1922Z
KAYLN TWO DEPARTURE (RNAV)

AL-276 (FAA)

SELFRIAGE ANGB (MTTC)
MOUNT CLEMENS, MICHIGAN



LIDDS TWO DEPARTURE (RNAV)
(LIDDS2.LIDDS) 15AUG19

MOUNT CLEMENS, MICHIGAN
SELFIDGE ANGB (MTTC)

**TOP ALTITUDE:
ASSIGNED BY ATC**

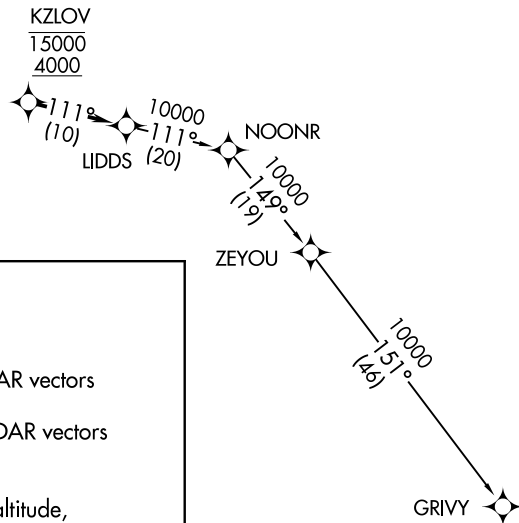
NOTE: RNAV 1.
NOTE: RADAR required.
NOTE: DME/DME/IRU or GPS required.
NOTE: Turbojet departures at/above 10000,
maintain 280K until advised by ATC.

007°
187°

TAKEOFF MINIMUMS:

Rwy 1: Standard.
Rwy 19: Standard with minimum climb
of 234' per NM to 1500.

ATIS
125.325 270.1
CLNC DEL
128.3 275.8
GND CON
128.3 275.8
SELFIDGE TOWER ★
120.15 225.4
SELFIDGE DEP CON
119.6 391.9



DEPARTURE ROUTE DESCRIPTION

TAKEOFF RUNWAY 1: Climb on heading 007° or as assigned for RADAR vectors
to cross KZLOV between 4000 and 15000, thence....

TAKEOFF RUNWAY 19: Climb on heading 187° or as assigned for RADAR vectors
to cross KZLOV between 4000 and 15000, thence....

....on track 111° to LIDDS, then on (transition). Maintain ATC assigned altitude,
expect filed altitude 10 minutes after departure.

GRIVY TRANSITION (LIDDS2.GRIVY):

NOTE: Chart not to scale.

(LIDDS2.LIDDS) 1922Z
LIDDS TWO DEPARTURE (RNAV)

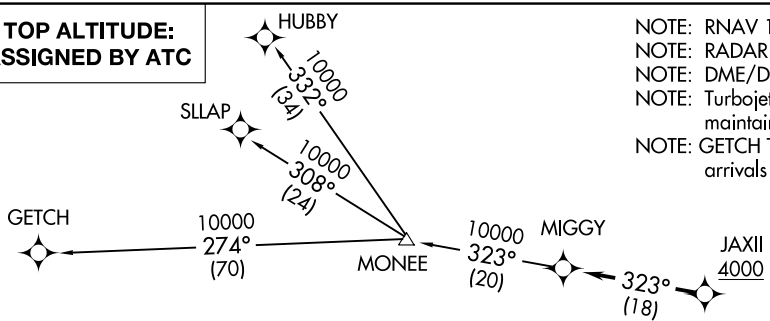
AL-276 (FAA)

SELFIDGE ANGB (MTTC)
MOUNT CLEMENS, MICHIGAN

MIGGY TWO DEPARTURE (RNAV)
(MIGGY2.MIGGY) 15AUG19

MOUNT CLEMENS, MICHIGAN
SELFIDGE ANGB (MTTC)

**TOP ALTITUDE:
ASSIGNED BY ATC**



NOTE: RNAV 1.
NOTE: RADAR required.
NOTE: DME/DME/IRU or GPS required.
NOTE: Turbojet departures at/above 10000, maintain 280K until advised by ATC.
NOTE: GETCH TRANSITION: For use by KMKE area arrivals only, or as assigned by ATC.

ATIS
125.325 270.1
CLNC DEL
128.3 275.8
GND CON
128.3 275.8
SELFIDGE TOWER ★
120.15 225.4
SELFIDGE DEP CON
119.6 391.9

DEPARTURE ROUTE DESCRIPTION

TAKEOFF RUNWAY 1: Climb on heading 007° or as assigned for RADAR vectors to cross JAXII at or above 4000, thence....
TAKEOFF RUNWAY 19: Climb on heading 187° or as assigned for RADAR vectors to cross JAXII at or above 4000, thence....

....on track 323° to MIGGY, then on (transition). Maintain ATC assigned altitude, expect filed altitude 10 minutes after departure.

GETCH TRANSITION (MIGGY2.GETCH):
HUBBY TRANSITION (MIGGY2.HUBBY):
SLLAP TRANSITION (MIGGY2.SLLAP):

TAKEOFF MINIMUMS:
Rwy 1: Standard.
Rwy 19: Standard with minimum climb of 234' per NM to 1500.



NOTE: Chart not to scale.

(MIGGY2.MIGGY) 19227
MIGGY TWO DEPARTURE (RNAV)
AL-276 (FAA)

SELFIDGE ANGB (MTTC)
MOUNT CLEMENS, MICHIGAN

PAVYL TWO DEPARTURE (RNAV)
(PAVYL2.PAVYL) 15AUG19

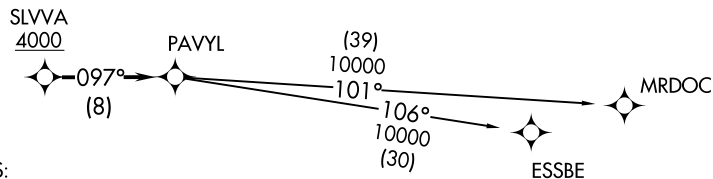
MOUNT CLEMENS, MICHIGAN
SELFDRIDGE ANGB (MTTC)

TOP ALTITUDE:
ASSIGNED BY ATC



NOTE: RNAV 1.
NOTE: RADAR required.
NOTE: DME/DME/IRU or GPS required.
NOTE: Turbojet departures at/above 10000,
maintain 280K until advised by ATC.

ATIS
125.325 270.1
CLNC DEL
128.3 275.8
GND CON
128.3 275.8
SELFDRIDGE TOWER ★
120.15 225.4
SELFDRIDGE DEP CON
119.6 391.9



TAKEOFF MINIMUMS:

Rwy 1: Standard.
Rwy 19: Standard with minimum climb
of 234' per NM to 1500.

NOTE: Chart not to scale.



DEPARTURE ROUTE DESCRIPTION

TAKEOFF RUNWAY 1: Climb on heading 007° or as assigned for RADAR vectors to cross SLVVA at or above 4000, thence....

TAKEOFF RUNWAY 19: Climb on heading 187° or as assigned for RADAR vectors to cross SLVVA at or above 4000, thence....

....on track 097° to PAVYL, then on (transition). Maintain ATC assigned altitude, expect filed altitude 10 minutes after departure.

ESSBE TRANSITION (PAVYL2.ESSBE):

MRDOC TRANSITION (PAVYL2.MRDOC):

(PAVYL2.PAVYL) 1922Z
PAVYL TWO DEPARTURE (RNAV)

AL-276 (FAA)

SELFDRIDGE ANGB (MTTC)
MOUNT CLEMENS, MICHIGAN

SNDRS TWO DEPARTURE (RNAV)
(SNDRS2.SNDRS) 15AUG19

SELF RIDGE ANGB (MTTC)
MOUNT CLEMENS, MICHIGAN

DEPARTURE ROUTE DESCRIPTION

TAKEOFF RUNWAY 1: Climb on heading 007° or as assigned for RADAR vectors to cross JWELS at or above 4000, thence....

TAKEOFF RUNWAY 19: Climb on heading 187° or as assigned for RADAR vectors to cross JWELS at or above 4000, thence....

....on track 218° to SNDRS, then on (transition). Maintain ATC assigned altitude, expect filed altitude 10 minutes after departure.

BGHRT TRANSITION (SNDRS2.BGHRT):

TORRR TRANSITION (SNDRS2.TORRR):

NOTE: RNAV 1.

NOTE: RADAR required.

NOTE: DME/DME/IRU or GPS required.

NOTE: Turbojet departures at/above 10000, maintain 280K until advised by ATC.

NOTE: TORRR TRANSITION: For use by KIND and KCVG area arrivals only and flights filed at or below FL220, or as assigned by ATC.

TOP ALTITUDE: ASSIGNED BY ATC

ATIS
125.325 270.1
CLNC DEL
128.3 275.8
GND CON
128.3 275.8
SELF RIDGE TOWER ★
120.15 225.4
SELF RIDGE DEP CON
119.6 391.9

N

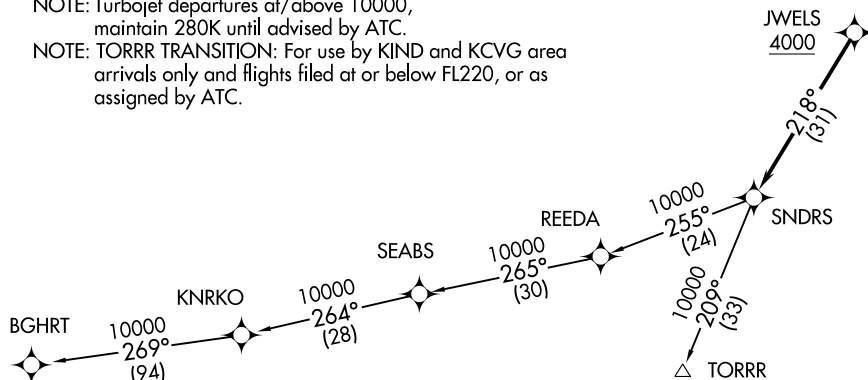
0.400
0.481

TAKEOFF MINIMUMS:

Rwy 1: Standard.

Rwy 19: Standard with minimum climb of 234' per NM to 1500.

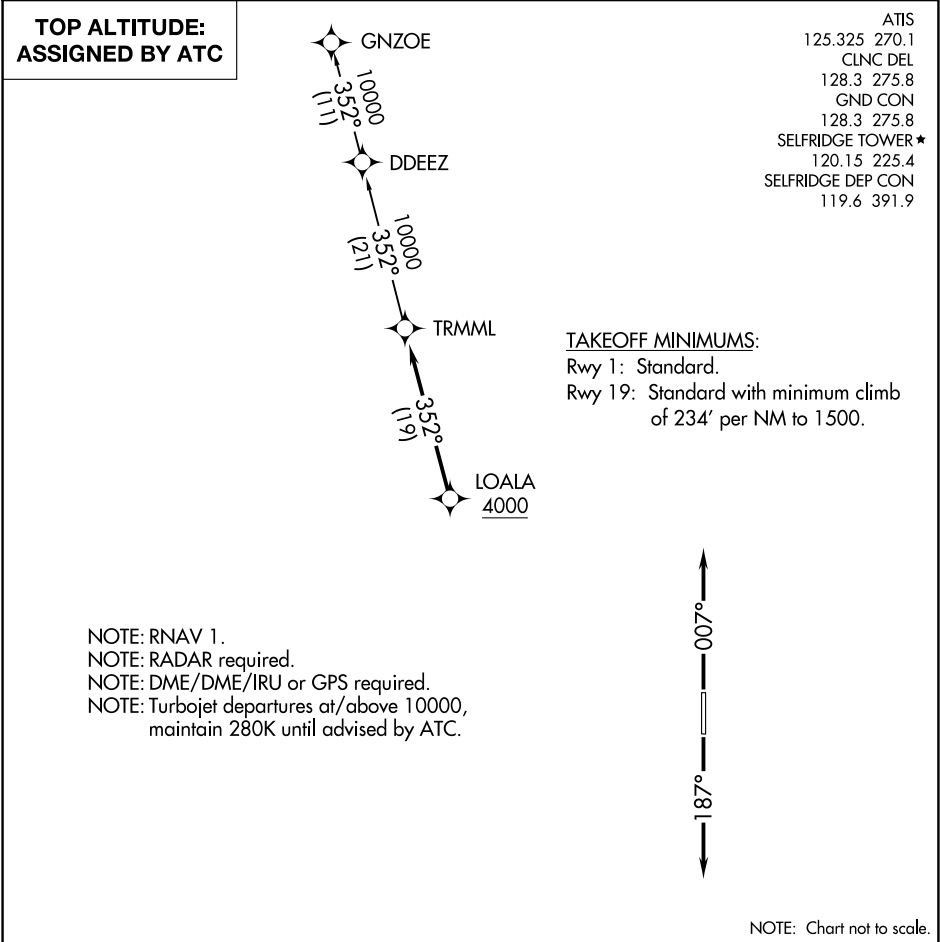
NOTE: Chart not to scale.



(SNDRS2.SNDRS) 1922Z
SNDRS TWO DEPARTURE (RNAV)

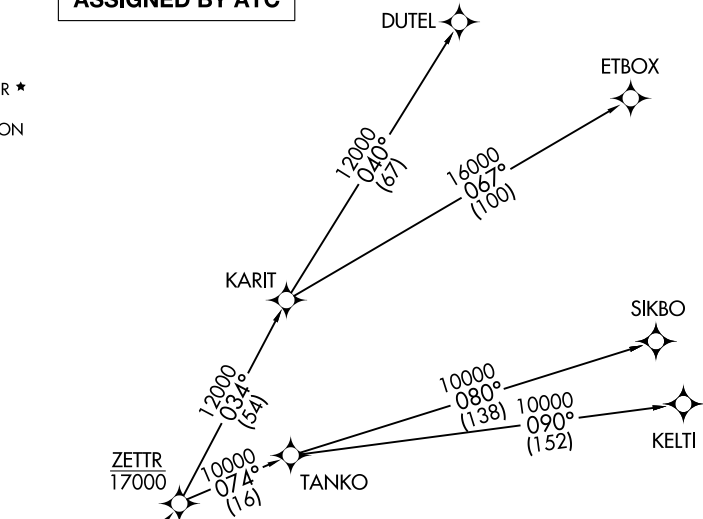
AL-276 (FAA)

SELF RIDGE ANGB (MTTC)
MOUNT CLEMENS, MICHIGAN



ATIS
125.325 270.1
CLNC DEL
128.3 275.8
GND CON
128.3 275.8
SELFRRIDGE TOWER ★
120.15 225.4
SELFRRIDGE DEP CON
119.6 391.9

TOP ALTITUDE:
ASSIGNED BY ATC



TAKEOFF MINIMUMS:
Rwy 1: Standard.
Rwy 19: Standard with minimum climb
of 234' per NM to 1500.

- NOTE: RNAV 1.
NOTE: RADAR required.
NOTE: DME/DME/IRU or GPS required.
NOTE: Turbojet departures at/above 10000,
maintain 280K until advised by ATC.
NOTE: TANKO TRANSITION: For use by
CYYZ area arrivals only, or as
assigned by ATC.

NOTE: Chart not to scale.

DEPARTURE ROUTE DESCRIPTION

TAKEOFF RUNWAY 1: Climb on heading
007° or as assigned for RADAR vectors
to cross FLOKA at or above 4000, thence....
TAKEOFF RUNWAY 19: Climb on heading
187° or as assigned for RADAR vectors
to cross FLOKA at or above 4000, thence....

....on track 049° to cross ZETTR at or below
17000, then on (transition). Maintain
ATC assigned altitude, expect filed altitude
10 minutes after departure.

- DUTEL TRANSITION (ZETTR3.DUTEL):
ETBOX TRANSITION (ZETTR3.ETBOX):
KELTI TRANSITION (ZETTR3.KELTI):
SIKBO TRANSITION (ZETTR3.SIKBO):
TANKO TRANSITION (ZETTR3.TANKO):