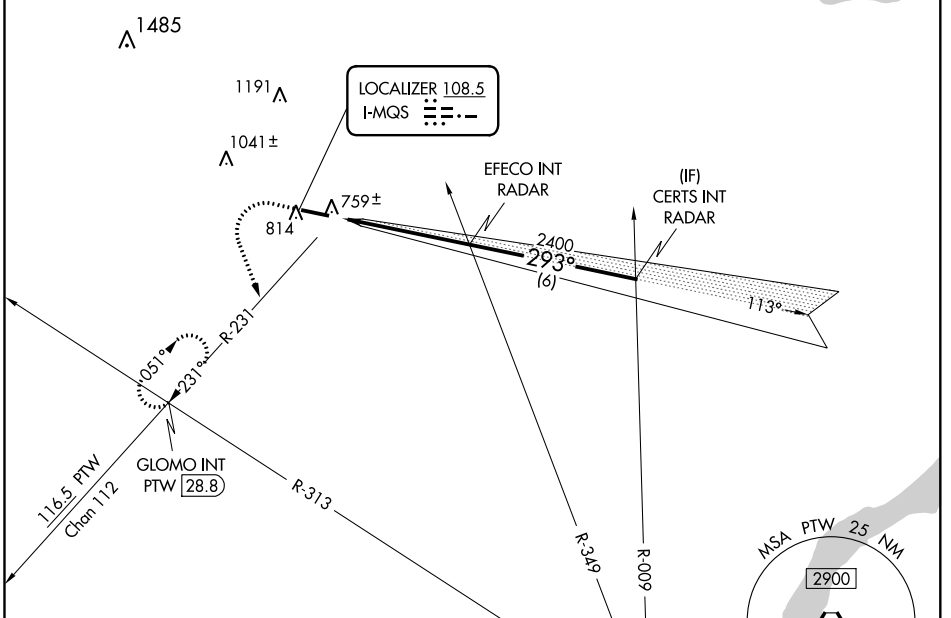


LOC I-MQS 108.5	APP CRS 293°	Rwy Idg TDZE Apt Elev	5400 660 660
---------------------------	------------------------	-----------------------------	---

ILS or LOC RWY 29
CHESTER COUNTY G O CARLSON (MQS)

RADAR required for procedure entry.		MISSED APPROACH: Climb to 3000 then climbing left turn to 3000 on heading 170° and PTW R-231 to GLOMO INT/PTW 28.8 DME and hold, continue climb-in-hold to 3000.	
-------------------------------------	--	--	--

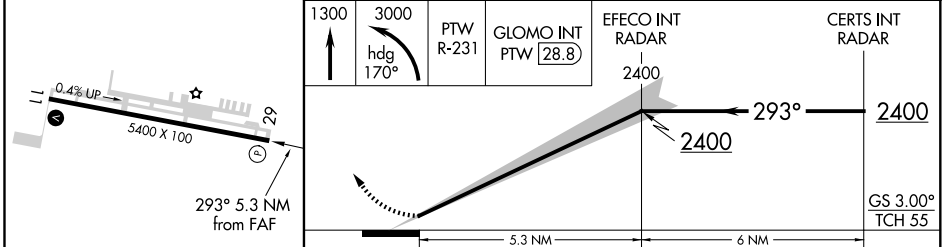
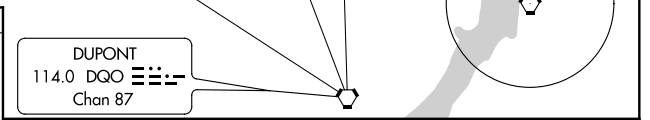
AWOS-3 126.25	PHILADELPHIA APP CON 124.35 319.15	CLNC DEL 125.6	UNICOM 122.7 (CTAF) 0
-------------------------	--	--------------------------	---------------------------------



NE-4, 04 NOV 2021 to 02 DEC 2021

NE-4, 04 NOV 2021 to 02 DEC 2021

ELEV 660	TDZE 660
----------	----------



HIRL Rwy 11-29 REIL Rwys 11 and 29 FAF to MAP 5.3 NM	Knots	60	90	120	150	180
	Min:Sec	5:18	3:32	2:39	2:07	1:46
CIRCLING	Category	A	B	C	D	
	S-ILS 29		910-3/4	250 (300-3/4)		
CIRCLING	S-LOC 29		1040-1	380 (400-1)		
		1140-1 480 (500-1)	1240-1 580 (600-1)	1260-1 1/2 600 (600-1 1/2)	1420-2 1/2 760 (800-2 1/2)	

WAAS CH 63006 W11A	APP CRS 113°	Rwy Idg TDZE Apt Elev	5400 644 660
--	------------------------	-----------------------------	---

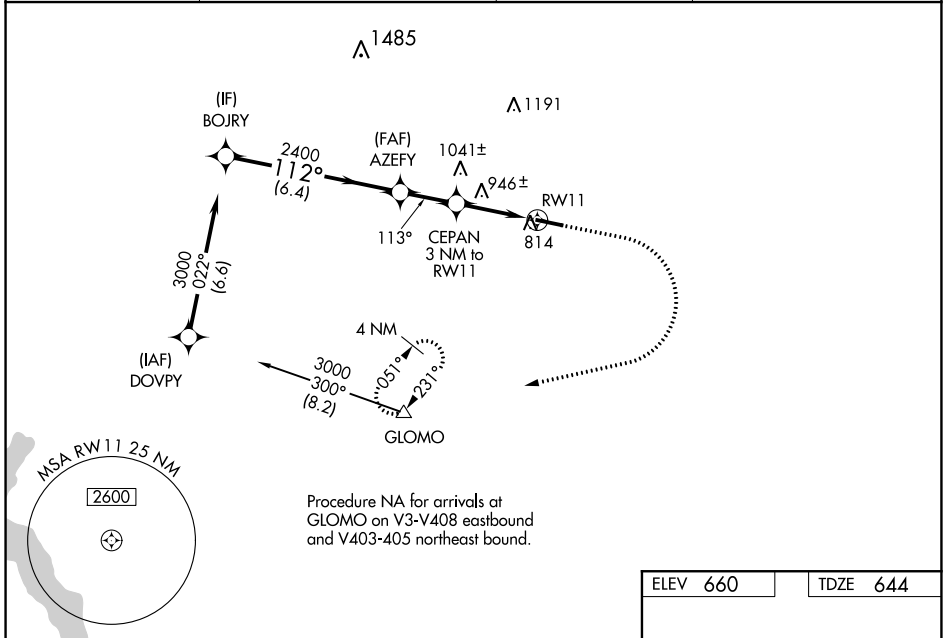
RNAV (GPS) RWY 11
CHESTER COUNTY G O CARLSON (MQS)

RNP APCH - GPS.

⚠ Helicopter visibility reduction below $\frac{3}{4}$ SM NA.
For uncompensated Baro-VNAV systems,
LNAV/VNAV NA below -16°C or above 54°C.

MISSED APPROACH: Climb to 1300 then climbing right turn to 3000 direct GLOMO and hold, continue climb-in-hold to 3000.

AWOS-3 126.25	PHILADELPHIA APP CON 124.35 319.15	CLNC DEL 125.6	UNICOM 122.7 (CTAF) 0
-------------------------	--	--------------------------	---------------------------------

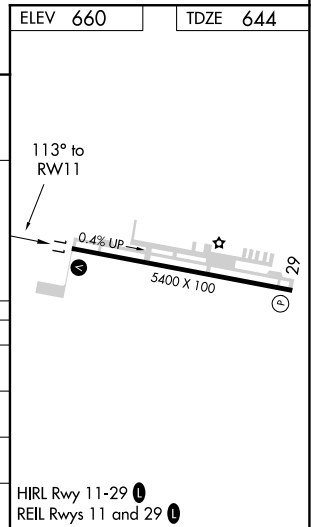


VGSI and RNAV glidepath not coincident (VGSI Angle 3.00/TCH 52).

	1300	3000	GLOMO
	↑	↷	△

BOJRY	AZEFY	CEPAN 3 NM to RW11	
3000	2400	1700	
GP 3.20° TCH 55			
6.4 NM	2.1 NM	1.4	1.6
112°	113°		
		1.6 NM to RW11	

CATEGORY	A	B	C	D
LPV DA	973-1		329 (400-1)	
LNAV/VNAV DA	1091-1 $\frac{3}{8}$		447 (500-1 $\frac{3}{8}$)	
LNAV MDA	1200-1	556 (600-1)	1200-1 $\frac{5}{8}$	556 (600-1 $\frac{5}{8}$)
CIRCLING	1200-1 540 (600-1)	1240-1 580 (600-1)	1260-1 $\frac{5}{8}$ 600 (600-1 $\frac{5}{8}$)	1420-2 $\frac{1}{2}$ 760 (800-2 $\frac{1}{2}$)



NE-4, 04 NOV 2021 to 02 DEC 2021

NE-4, 04 NOV 2021 to 02 DEC 2021

WAAS CH 82506 W29A	APP CRS 293°	Rwy ldg TDZE Apt Elev	5400 660 660
--	------------------------	-----------------------------	---

RNAV (GPS) RWY 29

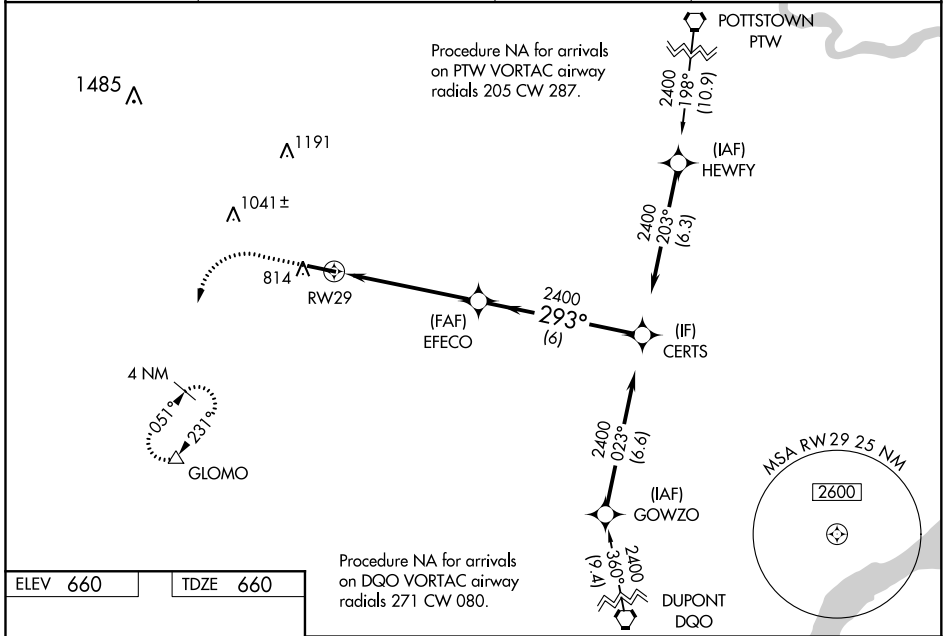
CHESTER COUNTY G O CARLSON (M/Q/S)

RNP APCH - GPS.

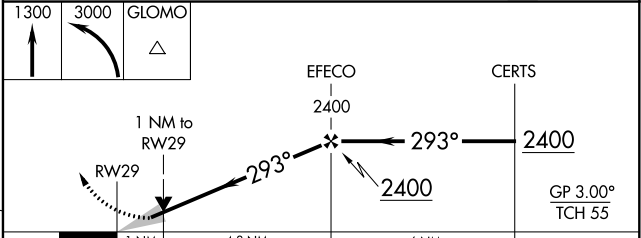
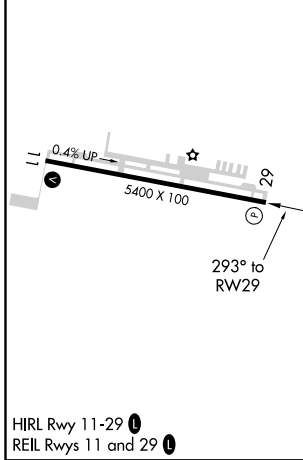
▲ For uncompensated Baro-VNAV systems, LNAV/VNAV NA below -16°C or above 54°C.

MISSED APPROACH: Climb to 1300 then climbing left turn to 3000 direct GLOMO and hold, continue climb-in-hold to 3000.

AWOS-3 126.25	PHILADELPHIA APP CON 124.35 319.15	CLNC DEL 125.6	UNICOM 122.7 (CTAF) 0
-------------------------	--	--------------------------	---------------------------------



ELEV 660	TDZE 660
----------	----------



CATEGORY	A	B	C	D
LPV DA		910-3/4	250 (300-3/4)	
LNAV/VNAV DA		915-3/4	255 (300-3/4)	
LNAV MDA		1020-1	360 (400-1)	
C CIRCLING	1140-1 480 (500-1)	1240-1 580 (600-1)	1260-1 1/2 600 (600-1 1/2)	1420-2 1/2 760 (800-2 1/2)

NE-4, 04 NOV 2021 to 02 DEC 2021

NE-4, 04 NOV 2021 to 02 DEC 2021