

APP CRS	Rwy Idg	3301
240°	TDZE	1213
	Apt Elev	1215

RNAV (GPS) RWY 24

MARSHALL COUNTY (MPG)

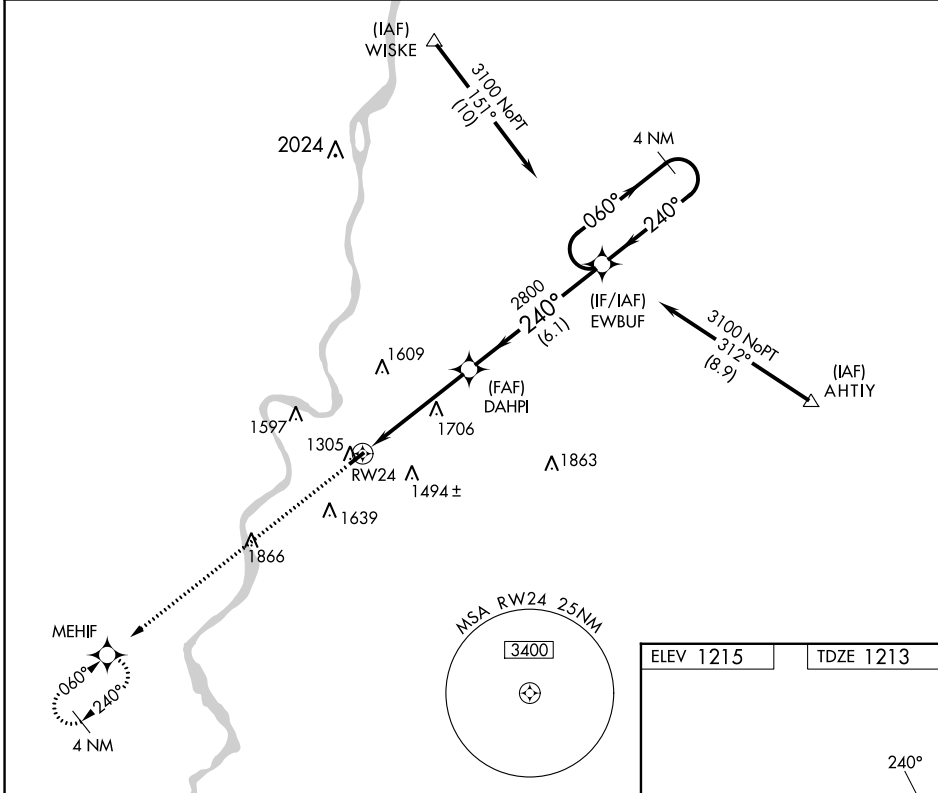
RNP APCH.

▼ When local altimeter setting not received, use Wheeling altimeter setting and increase all MDA 60 feet. Rwy 24 helicopter visibility reduction below 3/4 SM NA.

▲ NA

MISSED APPROACH: Climb to 3000 direct MEHIF and hold.

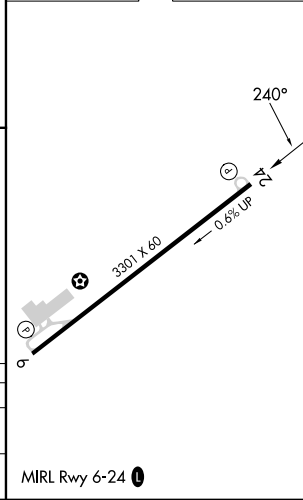
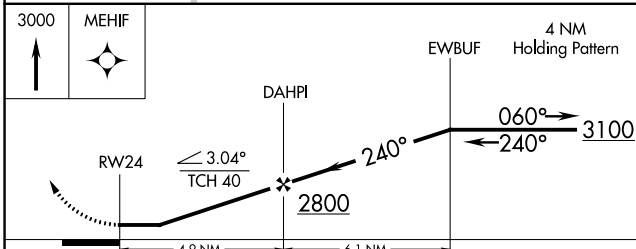
AWOS-3 119.05	CLEVELAND CENTER 126.95 239.30	UNICOM 122.7 (CTAF) 0
-------------------------	--	---------------------------------



NE-4, 22 FEB 2024 to 21 MAR 2024

NE-4, 22 FEB 2024 to 21 MAR 2024

ELEV 1215	TDZE 1213
-----------	-----------



CATEGORY	A	B	C	D
LNVA MDA	1960-1 747 (800-1)	1960-1¼ 747 (800-1¼)	1960-2¼ 747 (800-2¼)	NA
CIRCLING	1960-1 745 (800-1)	1960-1¼ 745 (800-1¼)	1960-2¼ 745 (800-2¼)	NA

MIRL Rwy 6-24 0

APP CRS	Rwy Idg	3301
060°	TDZE	1215
	Apt Elev	1215

RNAV (GPS) RWY 6

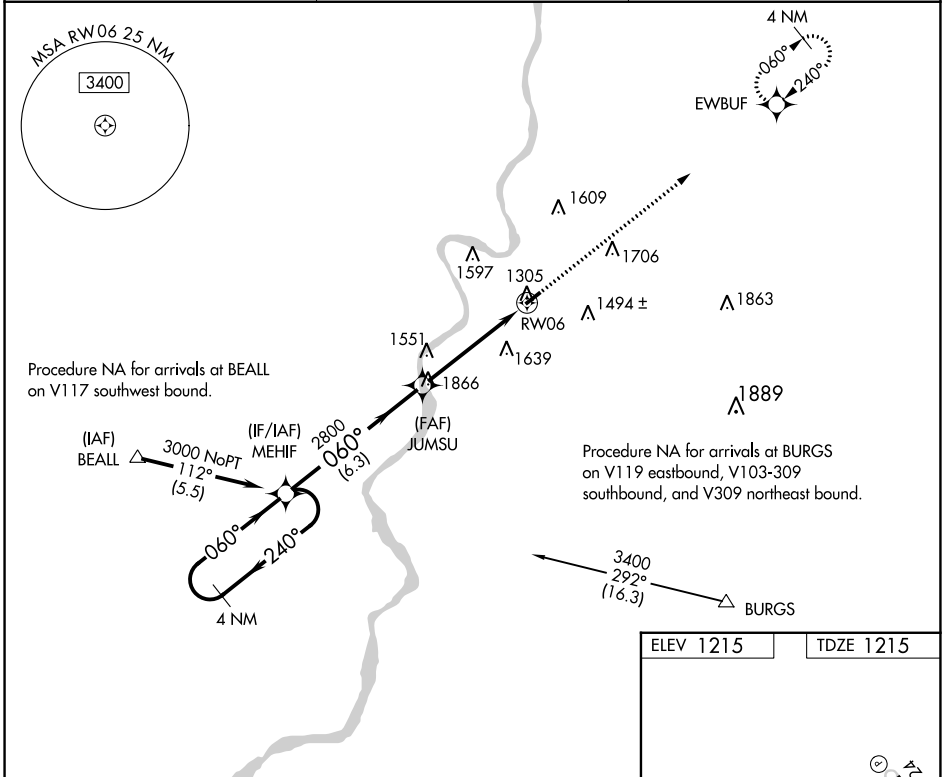
MARSHALL COUNTY (MPG)

RNP APCH

▼ Rwy 6 helicopter visibility reduction below ¾ SM NA. VDP NA when using Wheeling altimeter setting. When local altimeter setting not received, use Wheeling altimeter setting: increase all MDA 60 feet and visibility LNAV Cat C ¼ SM and Circling Cat C ¼ SM.

▲ NA MISSED APPROACH: Climb to 3100 direct EWBUF and hold.

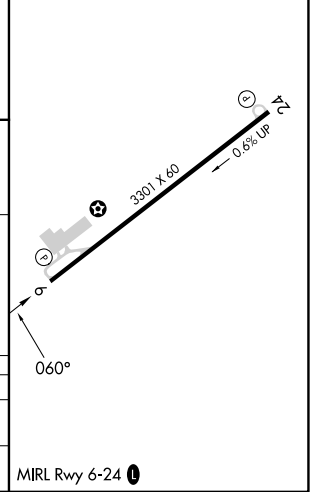
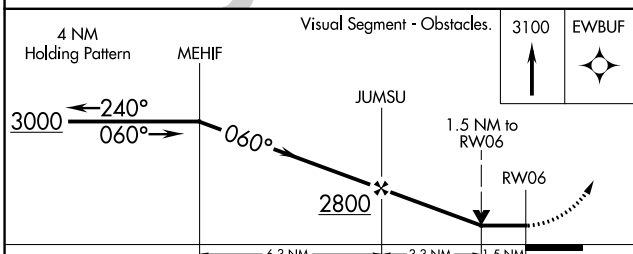
AWOS-3 119.05	CLEVELAND CENTER 126.95 239.30	UNICOM 122.7 (CTAF) ①
-------------------------	--	---------------------------------



NE-4, 22 FEB 2024 to 21 MAR 2024

NE-4, 22 FEB 2024 to 21 MAR 2024

ELEV 1215	TDZE 1215
-----------	-----------



CATEGORY	A	B	C	D
LNAV MDA	1860-1	645 (700-1)	1860-1 7/8 645 (700-1 7/8)	NA
CIRCLING	1860-1	645 (700-1)	1940-2 725 (800-2)	NA