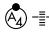


NDB JXT 346	APP CRS 054°	Rwy Idg TDZE Apt Elev	5717 1313 1313
-----------------------	------------------------	-----------------------------	---

NDB RWY 5

MOORE-MURRELL (MOR)

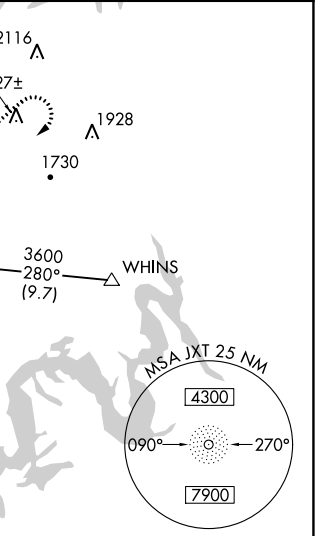
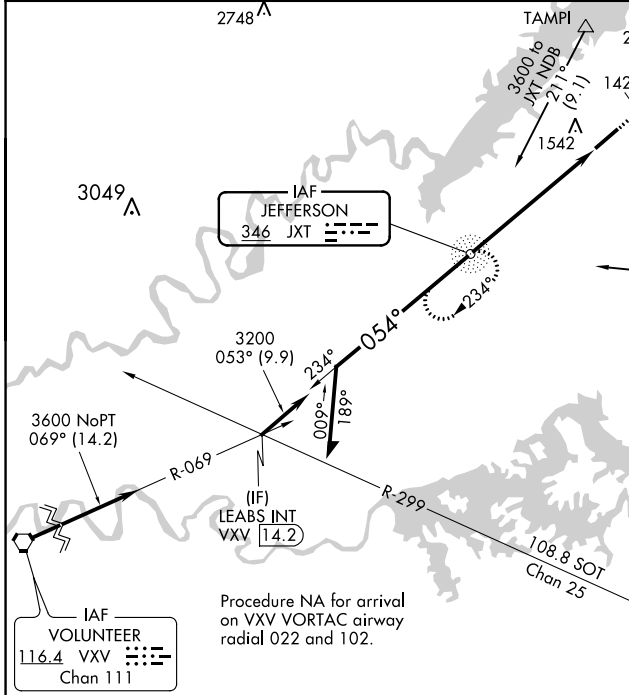
NA When local altimeter setting not received, use Mc Ghee Tyson altimeter setting and increase all MDA 140 feet, increase S-5 Cats C/D visibility to 2 SM, and Circling Cat B visibility to 1 1/4 SM and Cat C visibility to 3 SM. For inop MALSF, increase S-5 Cats C and D visibility to 1 7/8 miles. For inop MALSF, when using Mc Ghee Tyson altimeter setting, increase S-5 Cat B visibility to 1 1/4 miles and Cats C and D visibility to 2 1/2 miles.

MALSF

MISSED APPROACH:
 Climb to 2500 then climbing right turn to 3200 direct JXT NDB and hold.

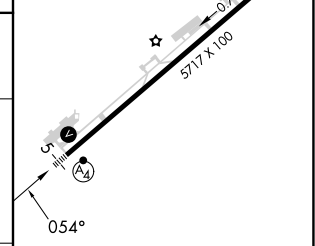
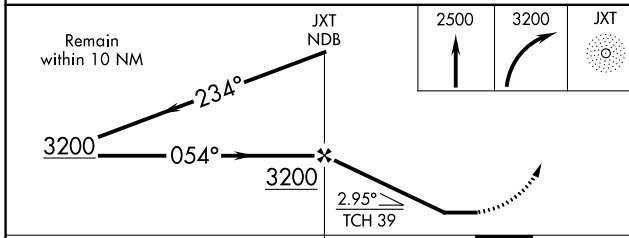
AWOS-3
126.725

KNOXVILLE APP CON
132.8 360.8

UNICOM
122.8 (CTAF) 0



ELEV	1313	TDZE	1313
------	------	------	------



CATEGORY	A	B	C	D
S-5	1960-3/4 647 (700-3/4)		1960-1 5/8 647 (700-1 5/8)	
CIRCLING	1960-1 647 (700-1)	2020-1 707 (800-1)	2160-2 1/2 847 (900-2 1/2)	2420-3 1107 (1200-3)

REIL Rwy 5-23 MRL Rwy 5-23				
FAF to MAP 5.9 NM				
Knots	60	90	120	150 180
Min:Sec	5:54	3:56	2:57	2:22 1:58

SE-1, 22 FEB 2024 to 21 MAR 2024

SE-1, 22 FEB 2024 to 21 MAR 2024

WAAS CH 40421 W23A	APP CRS 233°	Rwy Idg TDZE Apt Elev	5717 1292 1313
--	------------------------	-----------------------------	---

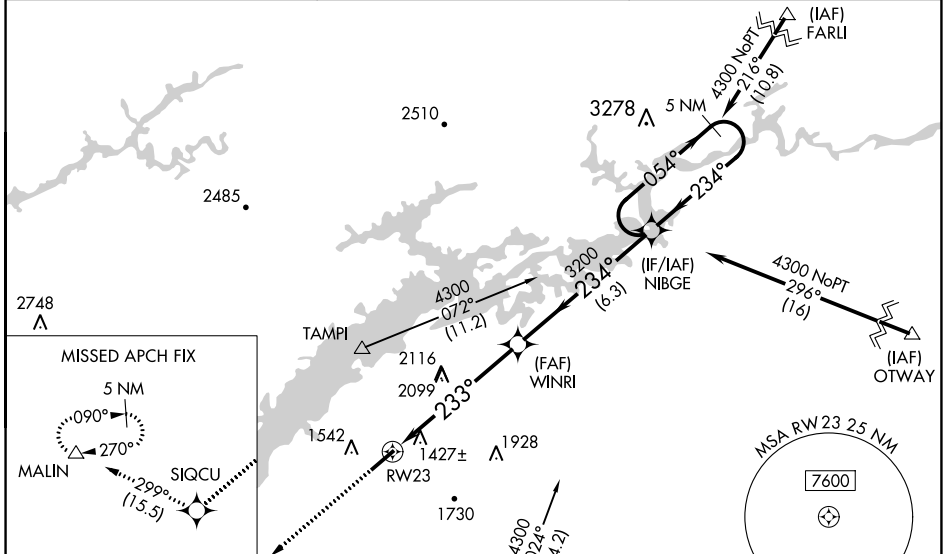
RNAV (GPS) RWY 23

MOORE-MURRELL (MOR)

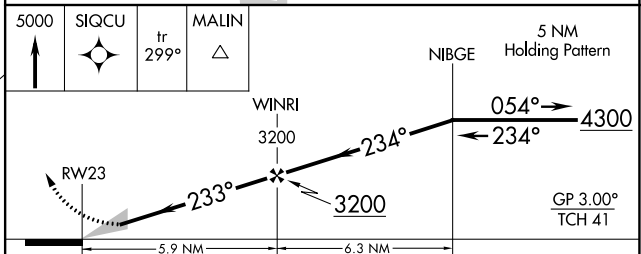
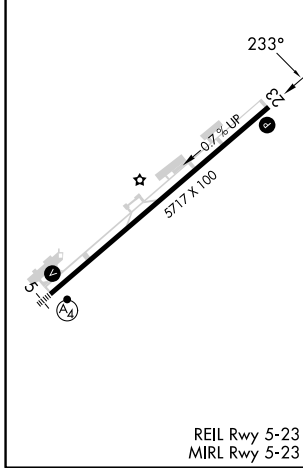
▽ Baro-VNAV NA when using Mc Ghee Tyson altimeter setting. For uncompensated Baro-VNAV systems, LNAV/VNAV NA below -17°C (2°F) or above 35°C (95°F).
△ NA DME/DME RNP-0.3 NA. When local altimeter setting not received, use Mc Ghee Tyson altimeter setting and increase all DA 133 feet and all MDA 140 feet, increase LPV all Cats visibility to 1½ miles, LNAV/VNAV all Cats visibility to 5 miles, LNAV and Circling Cat B visibility to 1½ miles and LNAV Cats C and D and Circling Cat C visibility to 3 miles.

MISSED APPROACH:
 Climb to 5000 direct SIQCU and on track 299° to MALIN and hold.

AWOS-3 126.725	KNOXVILLE APP CON 132.8 360.8	UNICOM 122.8 (CTAF) 0
--------------------------	---	---------------------------------



ELEV 1313	TDZE 1292
-----------	-----------



	A	B	C	D
LPV DA	1589-1 297 (300-1)			
LNAV/VNAV DA	2387-4 1095 (1100-4)			
LNAV MDA	2200-1¼ 908 (900-1¼)	2200-2½ 908 (900-2½)		
CIRCLING	2200-1¼ 887 (900-1¼)	2200-2¾ 887 (900-2¾)	2420-3 1107 (1200-3)	

SE-1, 22 FEB 2024 to 21 MAR 2024

SE-1, 22 FEB 2024 to 21 MAR 2024

WAAS CH 78321 W05A	APP CRS 053°	Rwy Idg TDZE 1313 Apt Elev 1313
--	------------------------	---

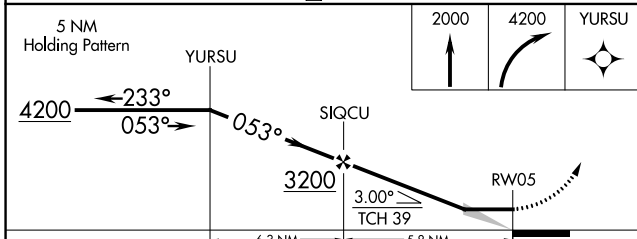
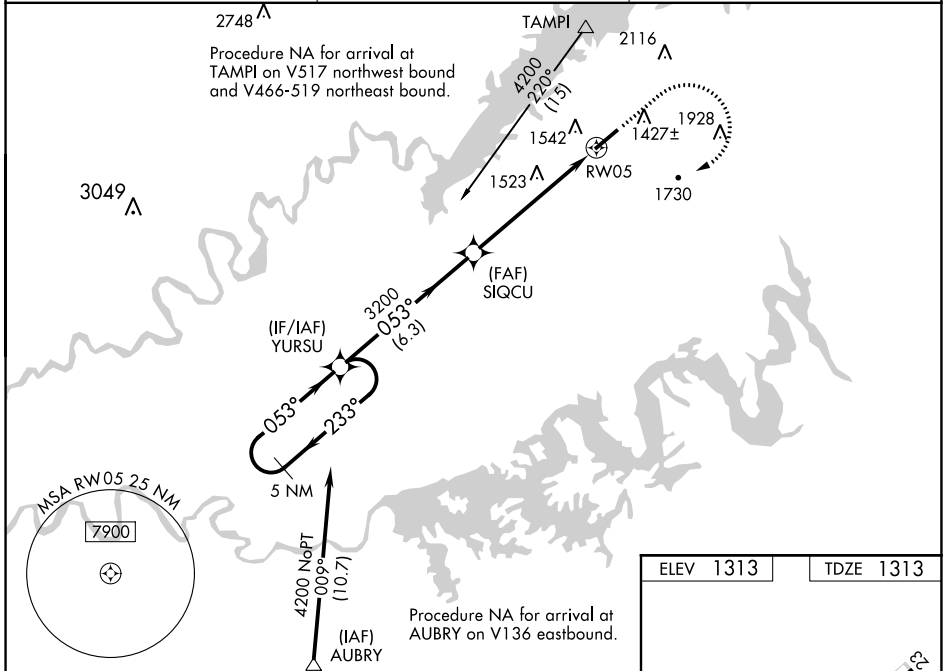
RNAV (GPS) RWY 5

MOORE-MURRELL (MOR)

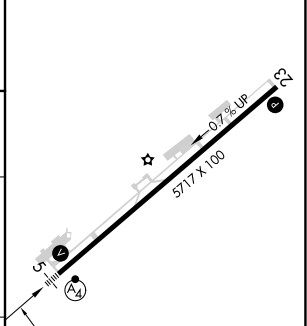
NA DME/DME RNP-0.3 NA. When local altimeter setting not received, use Mc Ghee Tyson altimeter setting and increase all MDA 140 feet, increase LP and LNAV Cats C/D visibility $\frac{3}{8}$ SM, increase Circling Cat B visibility $\frac{1}{4}$ SM and Cat C visibility $\frac{1}{2}$ SM. For inop MALSf, increase LP and LNAV Cats C and D visibility to $1\frac{3}{8}$ miles. For inop MALSf, when using Mc Ghee Tyson altimeter setting, increase LP and LNAV Cats C and D visibility to $1\frac{3}{4}$ miles.

MALSf MISSED APPROACH: Climb to 2000 then climbing right turn to 4200 direct YURSU and hold.

AWOS-3 126.725	KNOXVILLE APP CON 132.8 360.8	UNICOM 122.8 (CTAF)
--------------------------	---	-------------------------------



ELEV 1313	TDZE 1313
-----------	-----------



CATEGORY	A	B	C	D
LP MDA	1760- $\frac{3}{4}$	447 (500- $\frac{3}{4}$)	1760-1	447 (500-1)
LNAV MDA	1780- $\frac{3}{4}$	467 (500- $\frac{3}{4}$)	1780- $1\frac{1}{8}$	467 (500- $1\frac{1}{8}$)
CIRCLING	1880-1 567 (600-1)	2020-1 707 (800-1)	2160- $2\frac{1}{2}$ 847 (900- $2\frac{1}{2}$)	2420-3 1107 (1200-3)

REIL Rwy 5-23
MIRL Rwy 5-23

SE-1, 22 FEB 2024 to 21 MAR 2024

SE-1, 22 FEB 2024 to 21 MAR 2024

SDF/DME MOR	APP CRS	Rwy Idg	5717
109.5	053°	TDZE	1313
Chan 32		Apt Elev	1313

SDF RWY 5
MOORE-MURRELL (MOR)

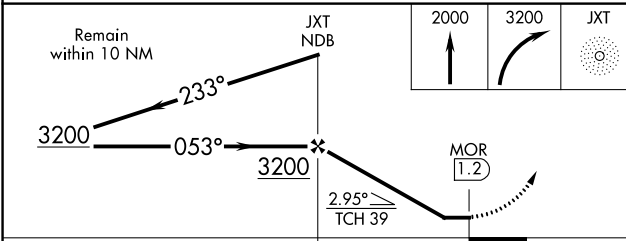
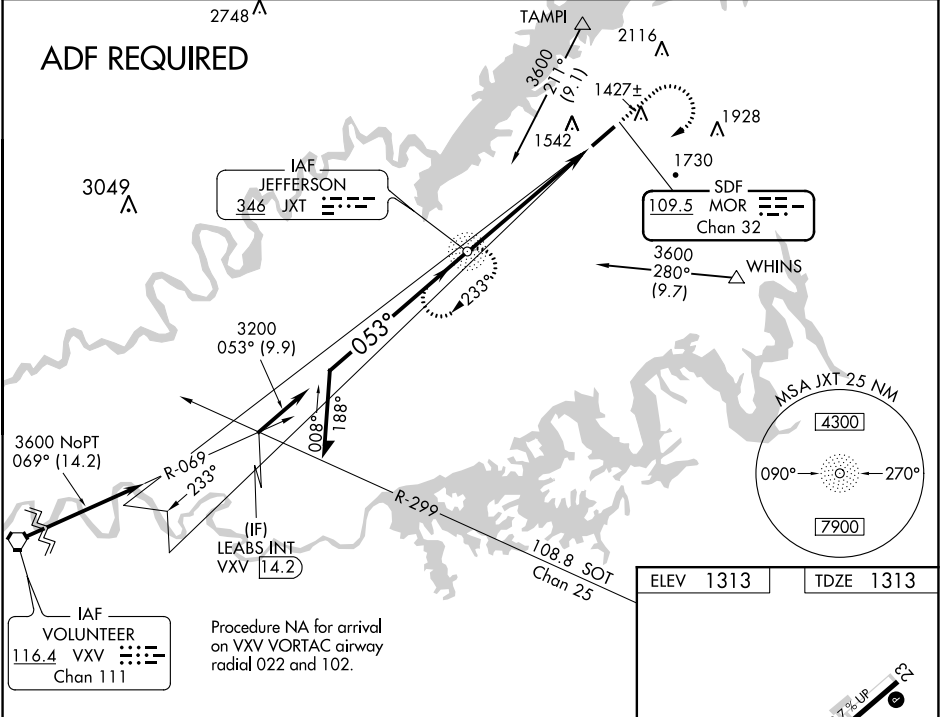
ADF Required. When local altimeter setting not received, use Mc Ghee Tyson altimeter setting and increase all MDA 140 feet, increase S-5 Cats C/D visibility to 1¼ SM, and Circling Cat B visibility to 1¼ SM, Cat C to 3 SM. For inop MALSF, increase S-5 Cats C and D visibility to 1½ miles. For inop MALSF, when using Mc Ghee Tyson altimeter setting, increase S-5 Cats C and D visibility to 2 miles.

MISSED APPROACH: Climb to 2000 then climbing right turn to 3200 direct JXT NDB and hold.

AWOS-3
126.725

KNOXVILLE APP CON
132.8 360.8

UNICOM
122.8 (CTAF)



ELEV	1313	TDZE	1313
------	------	------	------

CATEGORY	A	B	C	D
S-5	1860-¾ 547 (600-¾)		1860-1⅓ 547 (600-1⅓)	
CIRCLING	1880-1 567 (600-1)	2020-1 707 (800-1)	2160-2½ 847 (900-2½)	2420-3 1107 (1200-3)

REIL Rwy 5-23		MIRL Rwy 5-23	
FAF to MAP 5.9 NM			
Knots	60	90	120 150 180
Min:Sec	5:54	3:56	2:57 2:22 1:58

SE-1, 22 FEB 2024 to 21 MAR 2024

SE-1, 22 FEB 2024 to 21 MAR 2024