

WAAS CH 81832 W36A	APP CRS 356°	Rwy Idg TDZE Apt Elev	3100 99 103
--	------------------------	-----------------------------	--

RNAV (GPS) RWY 36

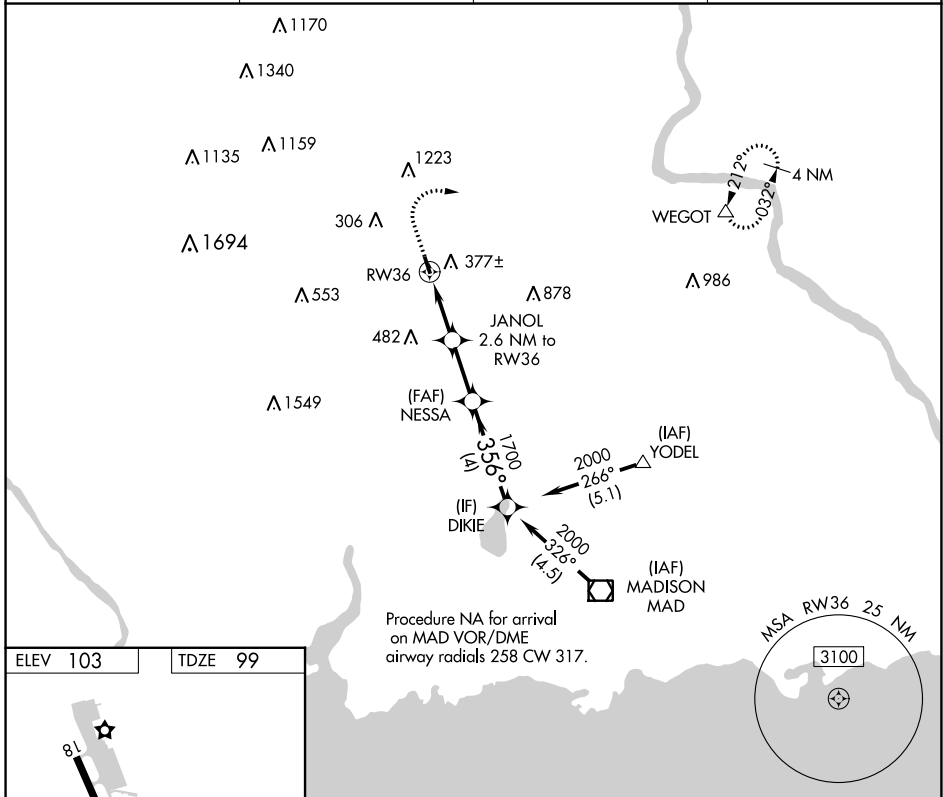
MERIDEN MARKHAM MUNI (MMK)

RNP APCH.

- Procedure NA at night.
- Rwy 36 helicopter visibility reduction below 1 SM NA.

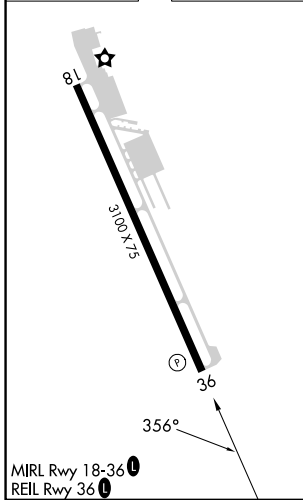
MISSED APPROACH: Climb to 800 then climbing right turn to 2500 direct WEGOT and hold.

ASOS 134.925	BRADLEY APP CON 127.8 269.325	CLNC DEL 120.65	UNICOM 123.05 (CTAF) 1
------------------------	---	---------------------------	---



Procedure NA for arrival on MAD VOR/DME airway radials 258 CW 317.

ELEV 103	TDZE 99
----------	---------



800	2500	WEGOT	Visual Segment - Obstacles.			
↑	↷	△				
		JANOL				
		2.6 NM to RWY 36				
		NESSA				
		DIKIE				
		2000				
		1700				
		960				
		2.6 NM	2.3 NM		4 NM	
CATEGORY	A	B	C	D		
LP MDA	660-1	561 (600-1)	NA			
LNAV MDA	760-1	661 (700-1)	NA			
C CIRCLING	780-1	677 (700-1)	NA			

NE-1, 30 NOV 2023 to 28 DEC 2023

NE-1, 30 NOV 2023 to 28 DEC 2023

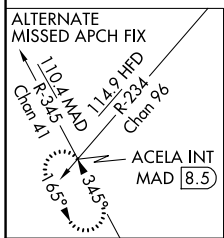
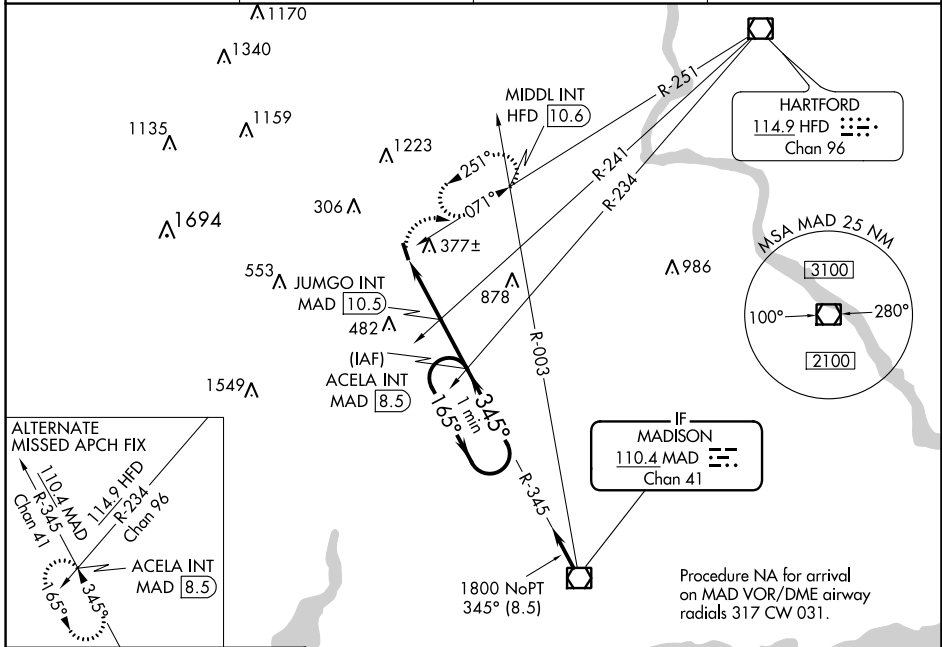
VOR/DME MAD	APP CRS	Rwy Idg	3100
110.4	345°	TDZE	99
Chan 41		Apt Elev	103

VOR RWY 36

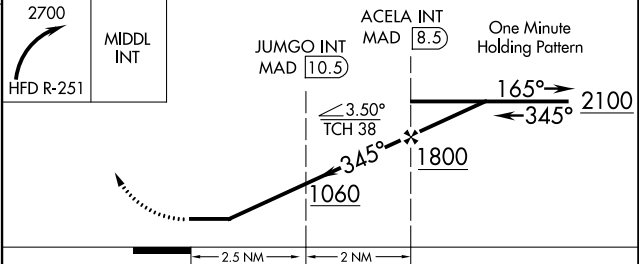
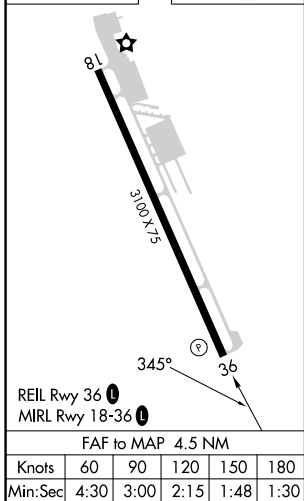
MERIDEN MARKHAM MUNI (MMK)

▼ Rwy 36 helicopter visibility reduction below 1 SM NA. Procedure NA at night.
▲ MISSED APPROACH: Climbing right turn to 2700 on HFD VOR/DME R-251 to MIDL INT/HFD 10.6 DME and hold, continue climb-in-hold to 2700.

ASOS 134.925	BRADLEY APP CON 127.8 269,325	CLNC DEL 120.65	UNICOM 123.05 (CTAF) ①
------------------------	---	---------------------------	---



ELEV 103	TDZE 99
----------	---------



CATEGORY	A	B	C	D
S-36	1060-1¼ 961 (1000-1½)	1060-1½ 961 (1000-1½)		NA
C CIRCLING	1060-1¼ 957 (1000-1½)	1060-1½ 957 (1000-1½)		NA
JUMGO FIX MINIMUMS (DUAL VOR RECEIVERS OR DME REQUIRED)				
S-36	880-1 781 (800-1)	880-1¼ 781 (800-1½)		NA
C CIRCLING	880-1 777 (800-1)	920-1¼ 817 (900-1½)		NA

NE-1, 30 NOV 2023 to 28 DEC 2023

NE-1, 30 NOV 2023 to 28 DEC 2023