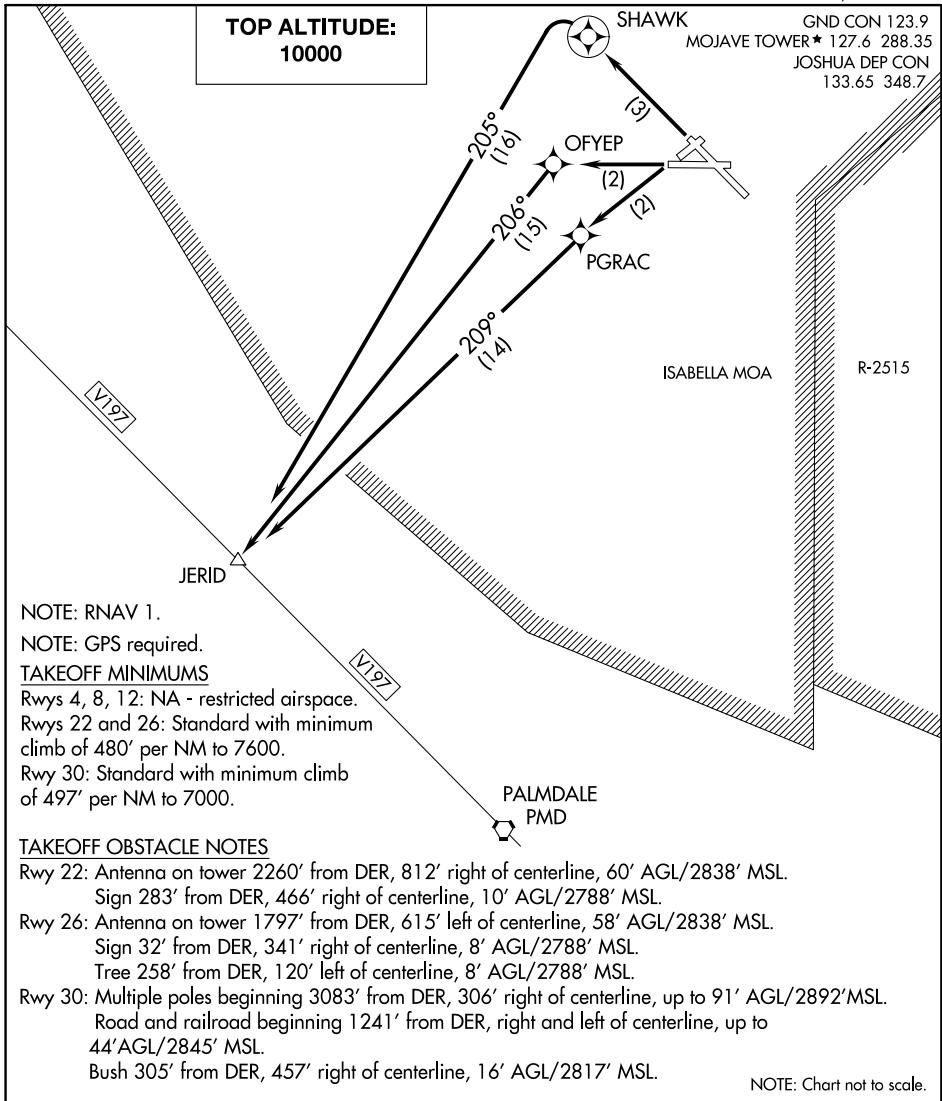


(JERID5.JERID) 16259

SL-9353 (FAA) MOJAVE AIR AND SPACE PORT (MHV)  
MOJAVE, CALIFORNIA

# JERID FIVE DEPARTURE (RNAV)

MOJAVE, CALIFORNIA



NOTE: RNAV 1.

NOTE: GPS required.

### TAKEOFF MINIMUMS

- Rwys 4, 8, 12: NA - restricted airspace.
- Rwys 22 and 26: Standard with minimum climb of 480' per NM to 7600.
- Rwy 30: Standard with minimum climb of 497' per NM to 7000.

### TAKEOFF OBSTACLE NOTES

- Rwy 22: Antenna on tower 2260' from DER, 812' right of centerline, 60' AGL/2838' MSL.  
Sign 283' from DER, 466' right of centerline, 10' AGL/2788' MSL.
- Rwy 26: Antenna on tower 1797' from DER, 615' left of centerline, 58' AGL/2838' MSL.  
Sign 32' from DER, 341' right of centerline, 8' AGL/2788' MSL.  
Tree 258' from DER, 120' left of centerline, 8' AGL/2788' MSL.
- Rwy 30: Multiple poles beginning 3083' from DER, 306' right of centerline, up to 91' AGL/2892' MSL.  
Road and railroad beginning 1241' from DER, right and left of centerline, up to 44' AGL/2845' MSL.  
Bush 305' from DER, 457' right of centerline, 16' AGL/2817' MSL.

NOTE: Chart not to scale.

### DEPARTURE ROUTE DESCRIPTION

- TAKEOFF RUNWAY 22: Climb direct PGRAC, then on track 209° to JERID, thence....
  - TAKEOFF RUNWAY 26: Climb direct OFYEP, then on track 206° to JERID, thence....
  - TAKEOFF RUNWAY 30: Climb direct SHAWK, then climbing left turn on track 209° to JERID, thence....
- ....maintain 10000, expect filed altitude 10 minutes after departure.

# JERID FIVE DEPARTURE (RNAV)

(JERID5.JERID) 15SEP16

MOJAVE, CALIFORNIA  
MOJAVE AIR AND SPACE PORT (MHV)

SW-3, 04 JAN 2018 to 01 FEB 2018

SW-3, 04 JAN 2018 to 01 FEB 2018