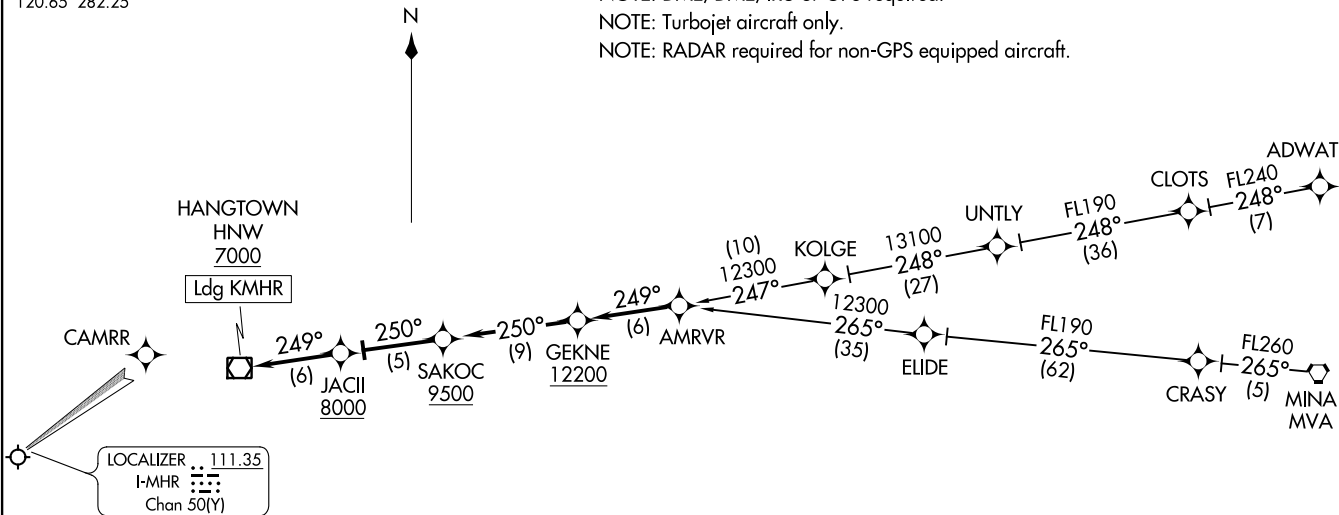


AMRVR TWO ARRIVAL (RNAV)
 (AMRVR,AMRVR2) 13SEP18

SACRAMENTO, CALIFORNIA
 SACRAMENTO MATHER (MTHR)

NORCAL APP CON
 127.4 317.5
 ATIS
 118.325
 MATHER TOWER ★
 120.65 282.25

NOTE: RNAV 1.
 NOTE: DME/DME/IRU or GPS required.
 NOTE: Turbojet aircraft only.
 NOTE: RADAR required for non-GPS equipped aircraft.



(AMRVR,AMRVR2) 18256
 AMRVR TWO ARRIVAL (RNAV)

AL-356 (FAA)

SACRAMENTO MATHER (MTHR)
 SACRAMENTO, CALIFORNIA

ARRIVAL ROUTE DESCRIPTION

ADWAT TRANSITION (ADWAT.AMRVR2)

MINA TRANSITION (MVA.AMRVR2)

... From AMRVR on track 249° to cross GEKNE at or above 12200, then on track 250° to cross SAKOC at or above 9500, then on track 250° to cross JACII at or above 8000, then on track 249° to cross HNW VOR/DME at or above 7000. Expect ILS approach Runway 22L or visual approach.

NOTE: Chart not to scale.