

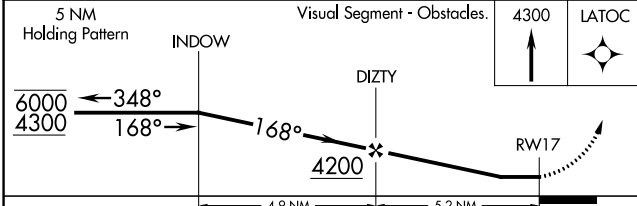
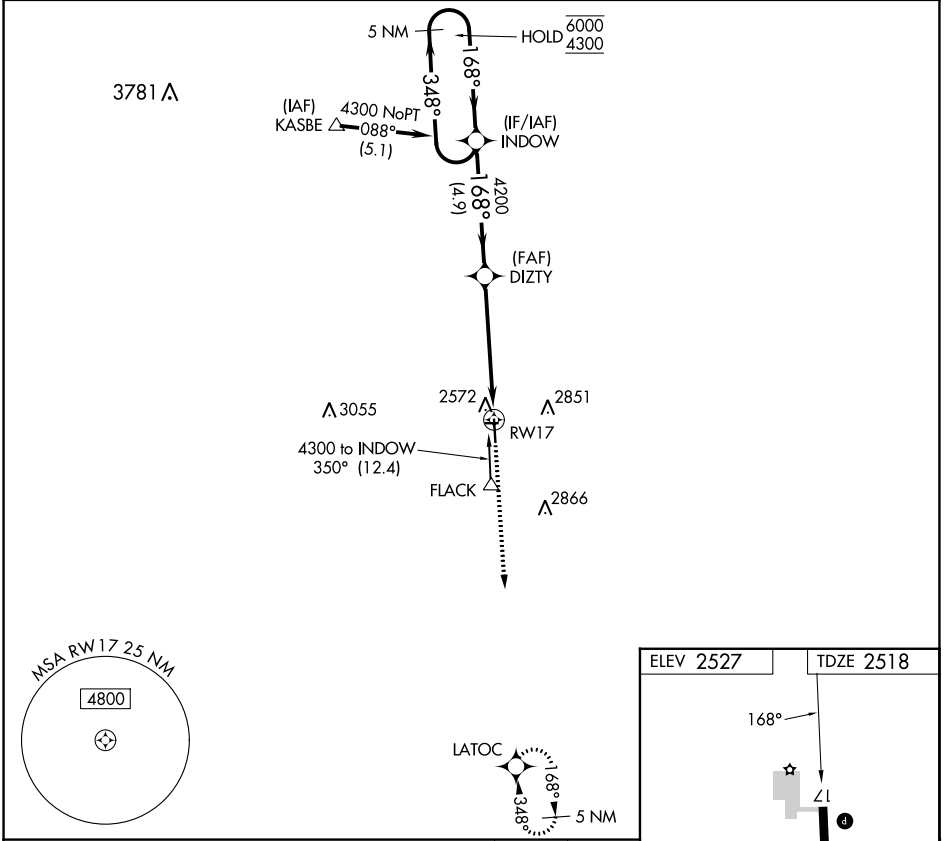
APP CRS	Rwy Idg	<b>4800</b>
<b>168°</b>	TDZE	<b>2518</b>
	Apt Elev	<b>2527</b>

# RNAV (GPS) RWY 17

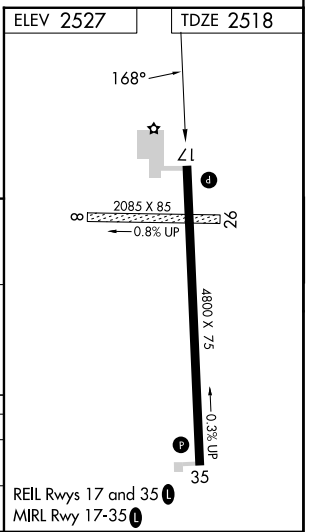
MEADE MUNI (MEJ)

RNP APCH-GPS.	<p>▼ Circling NA to Rwy 8 and 26. Rwy 17 helicopter visibility reduction below 1 SM NA.          ▲ NA When local altimeter setting not received, use Liberal altimeter setting and increase all MDAs 140 feet.</p>	MISSED APPROACH: Climb to 4300 direct LATOC and hold.
---------------	--	---

AWOS-3PT <b>119.425</b>	KANSAS CITY CENTER <b>134.0 257.625</b>	UNICOM <b>122.8 (CTAF) 0</b>
----------------------------	--	---------------------------------



CATEGORY	A	B	C	D
LNAV MDA	3100-1	582 (600-1)		NA
CIRCLING	3100-1 573 (600-1)	3160-1 633 (700-1)		NA



NC-2, 22 FEB 2024 to 21 MAR 2024

NC-2, 22 FEB 2024 to 21 MAR 2024

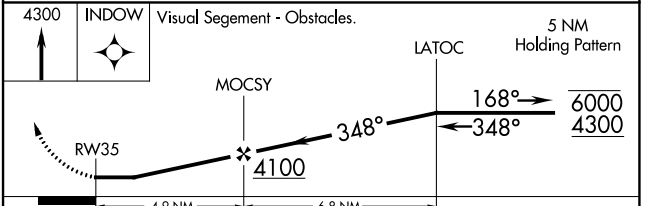
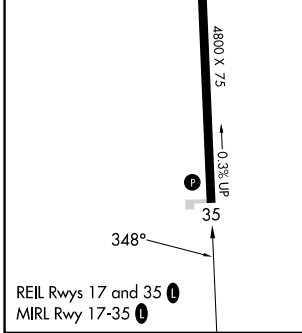
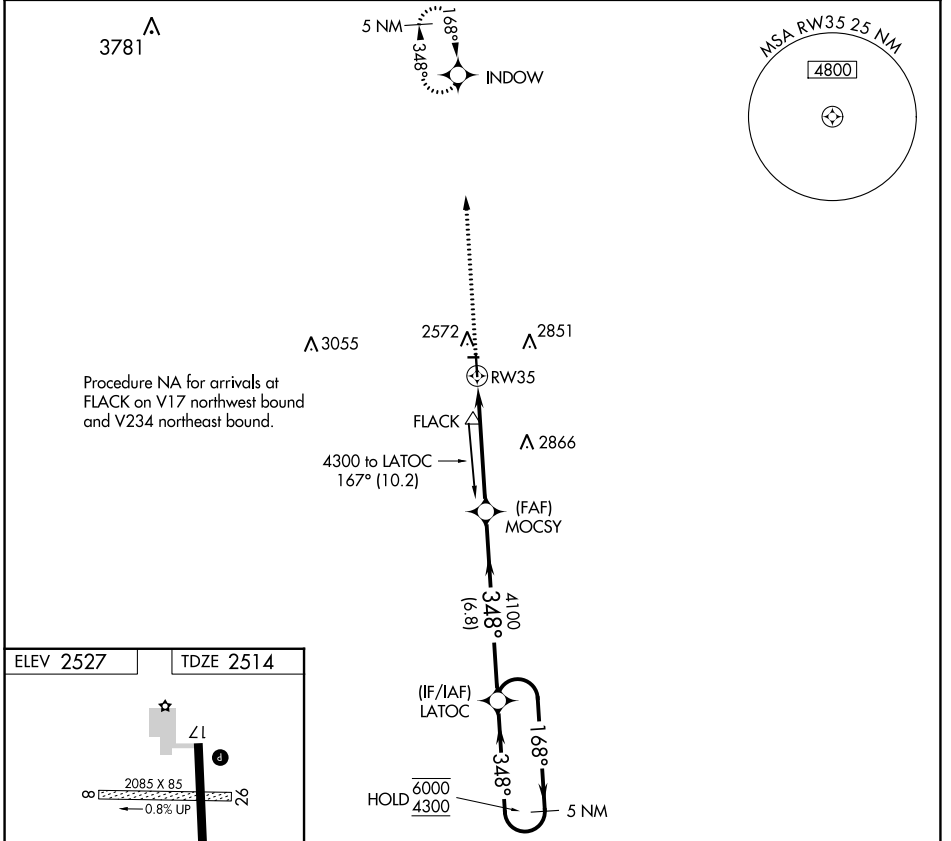
APP CRS	Rwy Idg	<b>4800</b>
<b>348°</b>	TDZE	<b>2514</b>
	Apt Elev	<b>2527</b>

# RNAV (GPS) RWY 35

MEADE MUNI (MEJ)

RNP APCH	MISSED APPROACH: Climb to 4300 direct INDOW and hold.
<p>▼ Circling NA to Rws 8 and 26. Rwy 35 helicopter visibility reduction below 1 SM NA. When local altimeter setting not received, use liberal altimeter setting and increase all MDAs 140 feet.</p> <p>▲ NA</p>	

AWOS-3PT <b>119.425</b>	KANSAS CITY CENTER <b>134.0 257.625</b>	UNICOM <b>122.8 (CTAF) 0</b>
----------------------------	--	---------------------------------



CATEGORY	A	B	C	D
LNAV MDA	3000-1	486 (500-1)	NA	
CIRCLING	3000-1 473 (500-1)	3160-1 633 (700-1)	NA	

NC-2, 22 FEB 2024 to 21 MAR 2024

NC-2, 22 FEB 2024 to 21 MAR 2024

# TAKEOFF MINIMUMS, (OBSTACLE) DEPARTURE PROCEDURES, AND DIVERSE VECTOR AREA (RADAR VECTORS)

24025

## INSTRUMENT APPROACH PROCEDURE CHARTS

### IFR TAKEOFF MINIMUMS AND (OBSTACLE) DEPARTURE PROCEDURES

#### Civil Airports and Selected Military Airports

ALL USERS: Airports that have Departure Procedures (DPs) designed specifically to assist pilots in avoiding obstacles during the climb to the minimum enroute altitude, and/or airports that have civil IFR takeoff minimums other than standard, are listed below. Takeoff Minimums and Departure Procedures apply to all runways unless otherwise specified. An entry may also be listed that contains only Takeoff Obstacle Notes. Altitudes, unless otherwise indicated, are minimum altitudes in MSL.

DPs specifically designed for obstacle avoidance are referred to as Obstacle Departure Procedures (ODPs) and are textually described below, or published separately as a graphic procedure. If the ODP is published as a graphic procedure, its name will be listed below, and it can be found in either this volume (civil), or the applicable military volume, as appropriate. Users will recognize graphic obstacle DPs by the term "(OBSTACLE)" included in the procedure title; e.g., TETON TWO (OBSTACLE). If not specifically assigned an ODP, SID, or RADAR vector as part of an IFR clearance, an ODP may be required to be flown for obstacle clearance, even though not specifically stated in the IFR clearance. When doing so in this manner, ATC should be informed when the ODP being used contains a specified route to be flown, restrictions before turning, and/or altitude restrictions.

Some ODPs, which are established solely for obstacle avoidance, require a climb in visual conditions to cross the airport, a fix, or a NAVAID in a specified direction, at or above a specified altitude. These procedures are called Visual Climb Over Airport (VCOA). To ensure safe and efficient operations, the pilot must verbally request approval from ATC to fly the VCOA when requesting their IFR clearance.

At some locations where an ODP has been established, a diverse vector area (DVA) may be created to allow RADAR vectors to be used in lieu of an ODP. DVA information will state that headings will be as assigned by ATC and climb gradients, when applicable, will be published immediately following the specified departure procedure.

Graphic DPs designed by ATC to standardize traffic flows, ensure aircraft separation and enhance capacity are referred to as "Standard Instrument Departures (SIDs)". SIDs also provide obstacle clearance and are published under the appropriate airport section. ATC clearance must be received prior to flying a SID.

CIVIL USERS NOTE: Title 14 Code of Federal Regulations Part 91 prescribes standard takeoff rules and establishes takeoff minimums for certain operators as follows: (1) For aircraft, other than helicopters, having two engines or less – one statute mile visibility. (2) For aircraft having more than two engines – one-half statute mile visibility. (3) For helicopters – one-half statute mile visibility. These standard minima apply in the absence of any different minima listed below.

MILITARY USERS NOTE: Civil (nonstandard) takeoff minima are published below. For military takeoff minima, refer to appropriate service directives.

## ABILENE, KS

### ABILENE MUNI (K78)

#### TAKEOFF MINIMUMS AND (OBSTACLE) DEPARTURE PROCEDURES

ORIG-B 07OCT21 (21280) (FAA)

#### TAKEOFF MINIMUMS:

**Rwy 35**, 300-1¼ or std. w/min. climb of 245' per NM to 1400, or alternatively, with std. takeoff minimums and a normal 200' per NM climb gradient, takeoff must occur no later than 2100' prior to DER.

**DEPARTURE PROCEDURE:**  
**Rwy 35**, climb on heading 353° to 2000 before turning right.

#### TAKEOFF OBSTACLE NOTES:

**Rwy 17**, electrical system 40' from DER, 108' left of centerline, 6' AGL/1151' MSL.  
Electrical system 40' from DER, 112' right of centerline, 6' AGL/1151' MSL.  
Poles beginning 69' from DER, 439' right of centerline, up to 29' AGL/1178' MSL.  
Tower, vehicles on road beginning 74' from DER, 312' right of centerline, up to 31' AGL/1183' MSL.  
**Rwy 35**, electrical system 42' from DER, 113' right of centerline, 4' AGL/1154' MSL.  
Tree 450' from DER, 597' left of centerline, 1175' MSL.  
Tree 550' from DER, 357' left of centerline, 1185' MSL.  
Trees beginning 578' from DER, 223' left of centerline, up to 41' AGL/1192' MSL.  
Trees beginning 748' from DER, 50' left of centerline, up to 1203' MSL.  
Trees beginning 756' from DER, 157' right of centerline, up to 1182' MSL.  
Trees, pole beginning 850' from DER, 29' right of centerline, up to 1204' MSL.  
Tree, pole beginning 1342' from DER, 614' left of centerline, up to 50' AGL/1206' MSL.  
Trees, poles beginning 1375' from DER, 83' left of centerline, up to 56' AGL/1211' MSL.  
Trees beginning 1519' from DER, 161' right of centerline, up to 60' AGL/1215' MSL.  
Trees, transmission line beginning 1644' from DER, 676' right of centerline, up to 1217' MSL.  
Trees beginning 1722' from DER, 44' right of centerline, up to 1220' MSL.  
Tree 1740' from DER, 111' left of centerline, 1214' MSL.  
Trees, pole beginning 1745' from DER, 234' left of centerline, up to 1226' MSL.  
Transmission line, trees beginning 1842' from DER, 22' right of centerline, up to 75' AGL/1228' MSL.  
Trees, transmission lines beginning 1952' from DER, 97' right of centerline, up to 1230' MSL.  
Trees, poles beginning 1975' from DER, 9' left of centerline, up to 1235' MSL.  
Tree 2104' from DER, 1040' left of centerline, 1241' MSL.  
Trees, pole beginning 2138' from DER, 4' left of centerline, up to 1244' MSL.  
Trees beginning 2406' from DER, 80' right of centerline, up to 83' AGL/1236' MSL.  
Trees beginning 2919' from DER, 475' left of centerline, up to 1250' MSL.

CON'T

# TAKEOFF MINIMUMS, (OBSTACLE) DEPARTURE PROCEDURES, AND DIVERSE VECTOR AREA (RADAR VECTORS)

24025

NC-2

# TAKEOFF MINIMUMS, (OBSTACLE) DEPARTURE PROCEDURES, AND DIVERSE VECTOR AREA (RADAR VECTORS)

24025

## ABILENE, KS (CON'T)

### ABILENE MUNI (K78) (CON'T)

**Rwy 35 (CON'T)**, trees beginning 3321' from DER, 1351' left of centerline, up to 1256' MSL.

Tree 4193' from DER, 1392' left of centerline, 1262' MSL.

Building 5585' from DER, 160' right of centerline, 148' AGL/1323' MSL.

## AINSWORTH, NE

### AINSWORTH RGNL (ANW)

TAKEOFF MINIMUMS AND (OBSTACLE) DEPARTURE PROCEDURES

ORIG 05JUN08 (08157) (FAA)

TAKEOFF OBSTACLE NOTES:

**Rwy 31**, fence 81' from DER, 374' right of centerline, 3' AGL/2589' MSL.

## ALBION, NE

### ALBION MUNI (BVN)

TAKEOFF MINIMUMS AND (OBSTACLE) DEPARTURE PROCEDURES

AMDT 1 25SEP08 (08269) (FAA)

TAKEOFF OBSTACLE NOTES:

**Rwy 15**, trees beginning 370' from DER, 72' left of centerline up to 98' AGL/1868' MSL.

Fence and trees beginning 4' from DER, 114' right of centerline, up to 61' AGL/1831' MSL.

**Rwy 33**, trees vehicles, terrain, and equipment beginning 93' from DER, 24' right of centerline, up to 52' AGL/1871' MSL.

Trees, building, and equipment 175' from DER, 12' left of centerline, up to 57' AGL/1863' MSL.

## ALMA, NE

### ALMA MUNI (4D9)

TAKEOFF MINIMUMS AND (OBSTACLE) DEPARTURE PROCEDURES

ORIG 20AUG15 (15232) (FAA)

TAKEOFF MINIMUMS:

**Rwy 35**, 300-2 or std. w min. climb of 224' per NM to 2500, or alternatively with standard takeoff minimums and a normal 200' per NM climb gradient, takeoff must occur no later than 2000' prior to DER.

TAKEOFF OBSTACLE NOTES:

**Rwy 17**, trees and poles beginning 399' from DER, 318' right of centerline, up to 50' AGL/2099' MSL.

Tree 678ft from DER, 317' left of centerline, up to 50' AGL/2089' MSL.

**Rwy 35**, tree 4' from DER, 312' right of centerline, 50' AGL/2109' MSL.

Vehicles on roads beginning 51' from DER, 161' right of centerline, up to 15' AGL/2082' MSL.

Terrain beginning 58' from DER, 403' left of centerline, 2079' MSL.

Vehicles on roads beginning 414' from DER, 250' left of centerline, up to 15' AGL/2095' MSL.

Poles and trees beginning 523' from DER, 547' left of centerline, up to 50' AGL/2119' MSL.

Irrigation arm 705' from DER, 459' left of centerline, 12' AGL/2091' MSL.

## ANTHONY, KS

### ANTHONY MUNI (ANY)

TAKEOFF MINIMUMS AND (OBSTACLE) DEPARTURE PROCEDURES

AMDT 1 02DEC21 (21336) (FAA)

TAKEOFF MINIMUMS:

**Rwys 10, 28**, NA-Environmental.

TAKEOFF OBSTACLE NOTES:

**Rwy 18**, traverse way 11' from DER, 145' right of centerline, 1346' MSL.

Tree, traverse way beginning 15' from DER, 153' right of centerline, up to 1379' MSL.

Tree 157' from DER, 472' right of centerline, 1382' MSL.

Trees, poles, antenna beginning 291' from DER, 19' right of centerline, up to 1407' MSL.

Lighting, tower, trees beginning 696' from DER, 15' left of centerline, up to 56' AGL/1377' MSL.

**Rwy 36**, tree 2477' from DER, 884' right of centerline, 66' AGL/1406' MSL.

## ATCHISON, KS

### AMELIA EARHART (K59)

TAKEOFF MINIMUMS AND (OBSTACLE) DEPARTURE PROCEDURES

ORIG 20OCT11 (11293) (FAA)

TAKEOFF OBSTACLE NOTES:

**Rwy 16**, trees beginning 135' from DER, 291' left of centerline, up to 100' AGL/1177' MSL.

Trees beginning 301' from DER, 230' right of centerline, up to 100' AGL/1161' MSL.

Vehicle on road, 25' from DER, crossing centerline, 15' AGL/1093' MSL.

**Rwy 34**, trees beginning 974' from DER, 639' left of centerline, up to 100' AGL/11 05' MSL.

Trees beginning 85' from DER, 308' right of centerline, up to 100' AGL/1105' MSL.

Vehicle on road, 25' from DER, crossing centerline, 15' AGL/1043' MSL.

# TAKEOFF MINIMUMS, (OBSTACLE) DEPARTURE PROCEDURES, AND DIVERSE VECTOR AREA (RADAR VECTORS)

24025

NC-2

# TAKEOFF MINIMUMS, (OBSTACLE) DEPARTURE PROCEDURES, AND DIVERSE VECTOR AREA (RADAR VECTORS)

24025

## ATKINSON, NE

STUART-ATKINSON MUNI (8V2)

TAKEOFF MINIMUMS AND (OBSTACLE) DEPARTURE PROCEDURES

AMDT 1 03MAY12 (12124) (FAA)

TAKEOFF MINIMUMS:

**Rwys 5, 23**, NA - Environmental.

TAKEOFF OBSTACLE NOTES:

**Rwy 29**, pole 585' from DER, 466 left of centerline, 36' AGL/2162' MSL.

## ATWOOD, KS

ATWOOD-RAWLINS COUNTY CITY-COUNTY (ADT)

TAKEOFF MINIMUMS AND (OBSTACLE) DEPARTURE PROCEDURES

ORIG-B 16JUN22 (22167) (FAA)

TAKEOFF MINIMUMS:

**Rwys 4, 22**, NA-Environmental.**Rwy 17**, 300-1½ or std. w/min. climb of 285' per NM to 3300.

TAKEOFF OBSTACLE NOTES:

**Rwy 17**, electrical system 10' from DER, 17' left of centerline, 1' AGL/2928' MSL.

Trees beginning 470' from DER, 160' right of centerline, up to 38' AGL/2952' MSL.

Tower 1.2 NM from DER, 352' left of centerline, 255' AGL/3125' MSL.

**Rwy 35**, electrical system 11' from DER, 18' left of centerline, 2' AGL/2992' MSL.

Poles, vehicle on road, beginning 400' from DER, 95' left of centerline, up to 30' AGL/3020' MSL.

Poles, beginning 697' from DER, 483' left of centerline, up to 35' AGL/3027' MSL.

Pole 1417' from DER, 437' left of centerline, 33' AGL/3029' MSL.

Pole 1418' from DER, 437' left of centerline, 34' AGL/3030' MSL.

## AUBURN, NE

FARINGTON FLD (K01)

TAKEOFF MINIMUMS AND (OBSTACLE) DEPARTURE PROCEDURES

ORIG 25APR19 (21224) (FAA)

TAKEOFF OBSTACLE NOTES:

**Rwy 34**, pole 1167' from DER, 620' right of centerline, 20' AGL/955' MSL.

## AUGUSTA, KS

AUGUSTA MUNI (3AU)

TAKEOFF MINIMUMS AND (OBSTACLE) DEPARTURE PROCEDURES

AMDT 1 09FEB12 (12040) (FAA)

TAKEOFF OBSTACLE NOTES:

**Rwy 18**, terrain, 51' from DER, 463' right of centerline, 1309' MSL.

Vehicle on road, 102' from DER, left to right of centerline, up to 15' AGL/1324' MSL.

Trees beginning 301' from DER, 489' left of centerline, up to 35' AGL/1344' MSL.

**Rwy 36**, terrain and trees 21' from DER, 51' left of centerline, up to 35' AGL/1374' MSL.

Terrain and trees 56' from DER, 155' right of centerline, up to 35' AGL/1374' MSL.

Vehicle on road, 744' from DER, left to right of centerline, up to 17' AGL/1356' MSL.

## AURORA, NE

AURORA MUNI - AL POTTER FIELD (AUH)

TAKEOFF MINIMUMS AND (OBSTACLE) DEPARTURE PROCEDURES

ORIG 25SEP08 (08269) (FAA)

TAKEOFF OBSTACLE NOTES:

**Rwy 16**, trees beginning 74' from DER, 436' left of centerline, up to 70' AGL/1876' MSL.

Vehicles on roadway beginning 396' from DER, left and right of centerline, up to 15' AGL/1814' MSL.

Tree 614' from DER, 577' right of centerline, 50' AGL/1859' MSL.

**Rwy 34**, fence 9' from DER, 470' left of centerline, 4' AGL/1806' MSL.

Vehicles on roadway beginning 93' from DER, 511' left of centerline, up to 15' AGL/1824' MSL.

Tree 135' from DER, 417' right of centerline, 12' AGL/1812' MSL.

Wood power poles beginning 320' from DER, 289' left of centerline, up to 61' AGL/1863' MSL.

Vehicles on roadway beginning 480' from DER, left and right of centerline, up to 15' AGL/1824' MSL.

Trees beginning 722' from DER, 376' left of centerline, up to 46' AGL/1847' MSL.

Chimney 770' from DER, 500' left of centerline, 24' AGL/1827' MSL.

Antennas beginning 802' from DER, 479' left of centerline, up to 35' AGL/1835' MSL.

# TAKEOFF MINIMUMS, (OBSTACLE) DEPARTURE PROCEDURES, AND DIVERSE VECTOR AREA (RADAR VECTORS)

24025

NC-2

# TAKEOFF MINIMUMS, (OBSTACLE) DEPARTURE PROCEDURES, AND DIVERSE VECTOR AREA (RADAR VECTORS)

24025

## BASSETT, NE

### ROCK COUNTY (RBE)

#### TAKEOFF MINIMUMS AND (OBSTACLE) DEPARTURE PROCEDURES

AMDT2 08APR10 (10098) (FAA)

##### TAKEOFF MINIMUMS:

**Rwys 2, 20**, NA-Environmental.

##### TAKEOFF OBSTACLE NOTES:

**Rwy 13**, fence and trees beginning 12' from DER, 298' left of centerline, up to 60' AGL/2449' MSL.

Fence and trees beginning 16' from DER, 320' right of centerline, up to 60' AGL/2459' MSL.

**Rwy 31**, rising terrain, trees, and train on railroad tracks beginning 2' from DER, 155' left of centerline, up to 60' AGL/2409' MSL.

Sign, obstruction light on airport beacon and multiple vehicles, towers, trees, fences, and fuel farms beginning 31' from DER, 330' right of centerline, up to 58' AGL/2403' MSL.

Train on railroad tracks, multiple buildings, vehicles and trees beginning 353' from DER, 322' right of centerline, up to 80' AGL/2416' MSL.

## BEATRICE, NE

### BEATRICE MUNI (BIE)

#### TAKEOFF MINIMUMS AND (OBSTACLE) DEPARTURE PROCEDURES

AMDT 1 15DEC11 (11349) (FAA)

##### DEPARTURE PROCEDURE:

**Rwy 18**, Climb heading 176° to 1900 before turning right.

##### TAKEOFF OBSTACLE NOTES:

**Rwy 14**, trees beginning 696' from DER, 438' left of centerline, up to 51' AGL/1360' MSL.

Light pole 1208' from DER, 212' left of centerline, 35' AGL/1344' MSL.

**Rwy 32**, tree 859' from DER, 320' left of centerline, 27' AGL/1346' MSL.

**Rwy 36**, trees beginning 779' from DER, 349' right of centerline, up to 58' AGL/1367' MSL.

Tree 1193' from DER, 50' left of centerline, 48' AGL/1357' MSL.

## BELLEVILLE, KS

### BELLEVILLE MUNI (RPB)

#### TAKEOFF MINIMUMS AND (OBSTACLE) DEPARTURE PROCEDURES

ORIG 20OCT11 (11293) (FAA)

##### TAKEOFF MINIMUMS:

**Rwys 14, 32**, NA - Environmental.

##### TAKEOFF OBSTACLE NOTES:

**Rwy 18**, power pole 16' from DER, 394' left of centerline, 37' AGL/1557' MSL.

Wind sock and buildings 33' from DER, 374' left of centerline, 60' AGL/1570' MSL.

Beacon 136' from DER, 488' left of centerline, 69' AGL/1579' MSL.

Trees and power pole beginning 129' from DER, 397' left of centerline 66' AGL/1576' MSL.

Tree row 371' from DER, 162' left of centerline, 48' AGL/1558' MSL.

Trees 354' from DER, 464' left of centerline, 62' AGL/1572' MSL.

**Rwy 36**, train 693' from DER, right and left of centerline, 23' AGL/1552' MSL.

Trees beginning 240' from DER, 285' right of centerline, 36' AGL/1546' MSL.

Tree line 710' from DER, right and left of centerline, 45' AGL/1545' MSL.

## BELOIT, KS

### MORITZ MEML (K61)

#### TAKEOFF MINIMUMS AND (OBSTACLE) DEPARTURE PROCEDURES

AMDT 1A 11OCT18 (21112) (FAA)

##### TAKEOFF MINIMUMS:

**Rwys 4, 22, 8, 26**, NA - Environmental.

##### DEPARTURE PROCEDURE:

**Rwy 17**, climb on heading 174° to 2400 before turning east on course.

**Rwy 35**, climb on heading 354° to 2400 before turning east on course.

##### TAKEOFF OBSTACLE NOTES:

**Rwy 17**, tree, building, pole, tank beginning 194' from DER, 293' left of centerline, up to 1449' MSL.

Tree, tank, pole, vehicle on road beginning 411' from DER, 131' right of centerline, up to 1455' MSL.

Trees, poles, building beginning 628' from DER, 308' right of centerline, up to 1456' MSL.

Trees, poles beginning 842' from DER, 358' left of centerline, up to 1460' MSL.

Tree, pole beginning 1130' from DER, 694' left of centerline, up to 1466' MSL.

Pole 2188' from DER, 549' left of centerline, 65' AGL/1480' MSL.

**Rwy 35**, tree 1003' from DER, 313' right of centerline, 1442' MSL.

Pole 1127' from DER, 624' right of centerline, 25' AGL/1450' MSL.

Poles beginning 1129' from DER, 5' right of centerline, up to 30' AGL/1452' MSL.

Poles beginning 1133' from DER, 349' left of centerline, up to 32' AGL/1465' MSL.

Trees beginning 1364' from DER, 253' left of centerline, up to 1472' MSL.

Antenna, poles beginning 1796' from DER, 160' left of centerline, up to 37' AGL/1480' MSL.

# TAKEOFF MINIMUMS, (OBSTACLE) DEPARTURE PROCEDURES, AND DIVERSE VECTOR AREA (RADAR VECTORS)

24025

# TAKEOFF MINIMUMS, (OBSTACLE) DEPARTURE PROCEDURES, AND DIVERSE VECTOR AREA (RADAR VECTORS)

24025

## BENTON, KS

LLOYD STEARMAN FLD (1K1)

TAKEOFF MINIMUMS AND (OBSTACLE) DEPARTURE PROCEDURES

ORIG 29JUL10 (21112) (FAA)

TAKEOFF OBSTACLE NOTES:

**Rwy 35**, vehicle on road beginning 20' from DER, left and right of centerline, up to 15' AGL/1384' MSL.

Tree 2689' from DER, 1125' left of centerline, 100' AGL/1489' MSL.

## BLAIR, NE

BLAIR EXEC (BTA)

TAKEOFF MINIMUMS AND (OBSTACLE) DEPARTURE PROCEDURES

ORIG 02JUL09 (22251) (FAA)

DEPARTURE PROCEDURE:

**Rwy 13**, climb on a heading between 124° CCW to 314° from DER or min. climb of 239' per NM to 3000 for all other courses.

TAKEOFF OBSTACLE NOTES:

**Rwy 13**, rising terrain beginning at DER, 183' right of centerline, up to 1319' MSL.

**Rwy 31**, trees beginning 434' from DER, 1' right of centerline, up to 35' AGL/1364' MSL.

## BROKEN BOW, NE

BROKEN BOW MUNI/KEITH GLAZE FLD (BBW)

TAKEOFF MINIMUMS AND (OBSTACLE) DEPARTURE PROCEDURES

AMDT 4 05DEC19 (19339) (FAA)

TAKEOFF MINIMUMS:

**Rwy 14**, 400-2¼ or std. w/min. climb of 240' per NM to 3100.

**Rwy 32**, std. w/min. climb of 310' per NM to 3000 or 1100-3 for VCOA.

VCOA:

**Rwy 32**, obtain ATC approval for VCOA when requesting IFR clearance. Climb in visual conditions to cross Broken Bow Muni/Keith Glaze Field at or above 3500' before proceeding on course.

TAKEOFF OBSTACLE NOTES:

**Rwy 14**, vehicle on road 10' from DER, 487' right of centerline, 2532' MSL.

Buildings beginning 12' from DER, 463' left of centerline, up to 19' AGL/2544' MSL.

Building 56' from DER, 512' left of centerline, 24' AGL/2549' MSL.

Building, general utility pole, pole, tree beginning 202' from DER, 170' left of centerline, up to 43' AGL/2572' MSL.

Tree 1568' from DER, 20' left of centerline, 2575' MSL.

Tree 1606' from DER, 90' right of centerline, 2573' MSL.

Tree 1628' from DER, 107' left of centerline, 2576' MSL.

Tree 1659' from DER, 21' left of centerline, 2579' MSL.

Building 2574' from DER, 567' right of centerline, 66' AGL/2599' MSL.

Tree 2831' from DER, 1243' right of centerline, 2605' MSL.

Tower 2.2 NM from DER, 1858' right of centerline, 305' AGL/2931' MSL.

**Rwy 32**, electrical systems beginning 39' from DER, 71' left of centerline, up to 3' AGL/2548' MSL.

Electrical system 39' from DER, 112' right of centerline, 4' AGL/2550' MSL.

Pole, fences, tree beginning 46' from DER, 325' right of centerline, up to 12' AGL/2559' MSL.

Vehicle on road 191' from DER, 341' left of centerline, 2556' MSL.

Trees, vehicle on road beginning 760' from DER, 253' left of centerline, up to 2634' MSL.

Trees beginning 1256' from DER, 780' right of centerline, up to 2627' MSL.

Tree 2562' from DER, 1073' right of centerline, 2654' MSL.

Tree, terrain beginning 2707' from DER, 1216' left of centerline, up to 2642' MSL.

Terrain 3558' from DER, 1398' left of centerline, 2651' MSL.

Terrain 3790' from DER, 1358' left of centerline, 2655' MSL.

Terrain 4015' from DER, 1337' left of centerline, 2661' MSL.

Tree, terrain beginning 4061' from DER, 1335' left of centerline, up to 2690' MSL.

Terrain 4440' from DER, 1498' left of centerline, 2693' MSL.

Terrain, tree beginning 4444' from DER, 1375' left of centerline, up to 2714' MSL.

Terrain beginning 5541' from DER, 1579' left of centerline, up to 2723' MSL.

Terrain, tree beginning 5601' from DER, 1487' left of centerline, up to 2760' MSL.

Terrain beginning 1 NM from DER, 1760' left of centerline, up to 2764' MSL.

Tree 1.4 NM from DER, 1375' right of centerline, 2778' MSL.

Trees beginning 1.4 NM from DER, 1253' right of centerline, up to 2788' MSL.

Tree 1.4 NM from DER, 692' left of centerline, 2778' MSL.

Terrain, trees beginning 1.4 NM from DER, 1525' right of centerline, up to 2804' MSL.

Terrain 1.5 NM from DER, 1354' left of centerline, 2794' MSL.

Terrain beginning 1.5 NM from DER, 1203' left of centerline, up to 2798' MSL.

Building, terrain beginning 1.5 NM from DER, 1476' left of centerline, up to 16' AGL/2816' MSL.

Trees, terrain beginning 1.5 NM from DER, 948' left of centerline, up to 2827' MSL.

Tree 1.6 NM from DER, 1173' left of centerline, 2830' MSL.

22 FEB 2024 to 21 MAR 2024

22 FEB 2024 to 21 MAR 2024

# TAKEOFF MINIMUMS, (OBSTACLE) DEPARTURE PROCEDURES, AND DIVERSE VECTOR AREA (RADAR VECTORS)

24025

# TAKEOFF MINIMUMS, (OBSTACLE) DEPARTURE PROCEDURES, AND DIVERSE VECTOR AREA (RADAR VECTORS)

24025

## BURLINGTON, KS

### COFFEY COUNTY (UKL)

#### TAKEOFF MINIMUMS AND (OBSTACLE) DEPARTURE PROCEDURES

ORIG 30JUN11 (11181) (FAA)

#### TAKEOFF OBSTACLE NOTES:

**Rwy 18**, vehicles on road beginning 291' from DER, 4' right of centerline, up to 10' AGL/1188' MSL.

Vehicles on road beginning 105' from DER, 103' left of centerline, up to 10' AGL/1178' MSL.

Terrain, 53' from DER, 434' right of centerline, 1175' MSL.

**Rwy 36**, vehicles on road beginning 187' from DER, 238' left of centerline, up to 10' AGL/1186' MSL.

Terrain, 77' from DER, 44' left of centerline, 1175' MSL.

## BURWELL, NE

### CRAM FLD (BUB)

#### TAKEOFF MINIMUMS AND (OBSTACLE) DEPARTURE PROCEDURES

ORIG 22AUG13 (21112) (FAA)

#### TAKEOFF OBSTACLE NOTES:

**Rwy 15**, tree 3651' from DER, 81' right of centerline, 78' AGL/2278' MSL.

Poles beginning 1011' from DER, 21' right of centerline, up to 47' AGL/2241' MSL.

Trees and poles beginning 691' from DER, 104' left of centerline, up to 54' AGL/2241' MSL.

**Rwy 33**, trees and pole beginning 366' from DER, 8' right of centerline, up to 105' AGL/2269' MSL.

Trees beginning 759' from DER, 25' left of centerline, up to 93' AGL/2255' MSL.

## CAMBRIDGE, NE

### CAMBRIDGE MUNI (CSB)

#### TAKEOFF MINIMUMS AND (OBSTACLE) DEPARTURE PROCEDURES

ORIG 26MAY16 (16147) (FAA)

#### TAKEOFF OBSTACLE NOTES:

**Rwy 15**, pole 444' from DER, 362' right of centerline, 30' AGL/2419' MSL.

Tree 837' from DER, 35' right of centerline, 42' AGL/2422' MSL.

**Rwy 33**, fence beginning 70' from DER, 292' right of centerline, up to 7' AGL/2428' MSL.

Terrain beginning 187' from DER, 449' right of centerline, up to 2429' MSL.

## CENTRAL CITY, NE

### CENTRAL CITY MUNI/LARRY REINEKE FLD (07K)

#### TAKEOFF MINIMUMS AND (OBSTACLE) DEPARTURE PROCEDURES

ORIG 30JUN11 (23166) (FAA)

#### TAKEOFF OBSTACLE NOTES:

**Rwy 16**, multiple power poles beginning 740' from DER, 57' right of centerline, up to 30' AGL/1746' MSL.

Multiple power poles beginning 901' from DER, 64' left of centerline, up to 30' AGL/1746' MSL.

Trees beginning 1765' from DER, 467' right of centerline, up to 59' AGL/1773' MSL.

**Rwy 34**, trees beginning 1002' from DER, 260' right of centerline, up to 61' AGL/1773' MSL.

## CHADRON, NE

### CHADRON MUNI (CDR)

#### TAKEOFF MINIMUMS AND (OBSTACLE) DEPARTURE PROCEDURES

AMDT 1 04FEB16 (16035) (FAA)

#### TAKEOFF MINIMUMS:

**Rwy 12**, std. w/min. climb of 240' per NM to 4800 or 1200-3 for climb in visual conditions.

**Rwy 21**, 300-1½ or std. w/min. climb of 220' per NM to 3600, or alternatively, with standard takeoff minimums and a normal 200' per NM climb gradient, takeoff must occur no later than 1500' prior to DER.

#### DEPARTURE PROCEDURE:

**Rwy 21**, climb heading 208° to 3900 before proceeding on course.

#### TAKEOFF OBSTACLE NOTES:

**Rwy 3**, antenna on building 269' from DER, 225' right of centerline, 13' AGL/3276' MSL.

Tree 346' from DER, 503' right of centerline, 40' AGL/3299' MSL.

**Rwy 12**, fence beginning 163' from DER, 255' left of centerline, up to 10' AGL/3299' MSL.

Pole 947' from DER, 591' right of centerline, 20' AGL/3322' MSL.

Vehicles on road 1101' from DER, 445' right of centerline, up to 15' AGL/3315' MSL.

**Rwy 21**, pole 1.2 NM from DER, 1669' left of centerline, 48' AGL/3495' MSL.

**Rwy 30**, trees beginning 54' from DER, 455' right of centerline, up to 50' AGL/3323' MSL.

Tree 1024' from DER, 756' left of centerline, 50' AGL/3332' MSL.

22 FEB 2024 to 21 MAR 2024

22 FEB 2024 to 21 MAR 2024

# TAKEOFF MINIMUMS, (OBSTACLE) DEPARTURE PROCEDURES, AND DIVERSE VECTOR AREA (RADAR VECTORS)

24025

NC-2



# TAKEOFF MINIMUMS, (OBSTACLE) DEPARTURE PROCEDURES, AND DIVERSE VECTOR AREA (RADAR VECTORS)

24025

## CHANUTE, KS

CHANUTE MARTIN JOHNSON (CNU)

TAKEOFF MINIMUMS AND (OBSTACLE) DEPARTURE PROCEDURES

ORIG 03JUN10 (10154) (FAA)

DEPARTURE PROCEDURE:

**Rwy 36**, climb heading 002° to 1500 before turning right.

TAKEOFF OBSTACLE NOTES:

**Rwy 18**, trains on railroad beginning 210' from DER, from left to right of centerline, up to 23' AGL/1022' MSL.

Trees beginning 2437' from DER, from left to right of centerline, up to 100' AGL/1079' MSL.

**Rwy 36**, vehicles on road beginning 316' from DER, from left to right of centerline, up to 15' AGL/994' MSL.

Trees beginning 447' from DER, 522' left of centerline, up to 100' AGL/1079' MSL.

Trees beginning 519' from DER, 619' right of centerline, up to 100' AGL/1079' MSL.

## CHAPPELL, NE

BILLY G RAY FLD (CNP)

TAKEOFF MINIMUMS AND (OBSTACLE) DEPARTURE PROCEDURES

ORIG 07MAR13 (22083) (FAA)

TAKEOFF OBSTACLE NOTES:

**Rwy 12**, vehicles on road 514' from DER, left and right of centerline, up to 15' AGL/3694' MSL.

Vehicles on road 11' from DER, 461' right of centerline, up to 17' AGL/3706' MSL.

Trees beginning 3059' from DER, 658' left of centerline, up to 100' AGL/3756' MSL.

**Rwy 30**, trees beginning 764' from DER, 333' left of centerline, up to 100' AGL/3789' MSL.

Trees beginning 1287' from DER, 658' right of centerline, up to 100' AGL/3779' MSL.

Vehicles on road beginning 97' from DER, 505' left of centerline, up to 17' AGL/3696' MSL.

Vehicles on road beginning 953' from DER, left and right of centerline, up to 17' AGL/3706' MSL.

## CLAY CENTER, KS

CLAY CENTER MUNI (CYW)

TAKEOFF MINIMUMS AND (OBSTACLE) DEPARTURE PROCEDURES

AMDT 1 13JAN11 (11013) (FAA)

TAKEOFF OBSTACLE NOTES:

**Rwy 17**, vehicle on road 450' from DER, left and right of centerline, 15' AGL/1221' MSL.

## COFFEYVILLE, KS

COFFEYVILLE MUNI (CFV)

TAKEOFF MINIMUMS AND (OBSTACLE) DEPARTURE PROCEDURES

AMDT 1 29JUL10 (10210) (FAA)

TAKEOFF OBSTACLE NOTES:

**Rwy 17**, trees beginning 3041' from DER, left and right of centerline, up to 100' AGL/849' MSL.

**Rwy 35**, trees beginning 2442' from DER, left and right of centerline, up to 100' AGL/859' MSL.

## COLBY, KS

SHALZ FLD (CBK)

TAKEOFF MINIMUMS AND (OBSTACLE) DEPARTURE PROCEDURES

ORIG 25SEP08 (21168) (FAA)

TAKEOFF MINIMUMS:

**Rwys 4, 12, 22, 30**, N/A-Environmental.

TAKEOFF OBSTACLE NOTES:

**Rwy 17**, terrain beginning 7' from DER, 193' right of centerline, up to 3156' MSL.

Trees beginning 3708' from DER, 1072' right of centerline, up to 100' AGL/3249' MSL.

Vehicle and road beginning 550' from DER, 35' left to right of centerline, 15' AGL/3174' MSL.

**Rwy 35**, terrain beginning 205' from DER, 248' left of centerline, up to 3196' MSL.

## COLDWATER, KS

COMANCHE COUNTY (3K8)

TAKEOFF MINIMUMS AND (OBSTACLE) DEPARTURE PROCEDURES

ORIG 21JUL16 (16203) (FAA)

DEPARTURE PROCEDURE:

**Rwy 35**, climb heading 350° to 2600 before turning right.

TAKEOFF OBSTACLE NOTES:

**Rwy 17**, vehicles on road, beginning 46' from DER, 412' right of centerline, up to 15' AGL/2082' MSL.

Vehicle on road 625' from DER, 235' left of centerline, 2090' MSL.

Vehicle on road 635' from DER, 350' left of centerline, 2092' MSL.

Vehicle on road 641' from DER, 466' left of centerline, 2094' MSL.

Tree 713' from DER, 559' left of centerline, 34' AGL/2116' MSL.

Trees, beginning 808' from DER, 506' left of centerline, up to 54' AGL/2136' MSL.

**Rwy 35**, fence, grd, beginning 46' from DER, 124' right of centerline, up to 7' AGL/2100' MSL.

Fence 126' from DER, 304' left of centerline, 10' AGL/2093' MSL.

# TAKEOFF MINIMUMS, (OBSTACLE) DEPARTURE PROCEDURES, AND DIVERSE VECTOR AREA (RADAR VECTORS)

24025


**TAKEOFF MINIMUMS, (OBSTACLE) DEPARTURE PROCEDURES, AND  
DIVERSE VECTOR AREA (RADAR VECTORS)**


24025

**COLUMBUS, NE****COLUMBUS MUNI (OLU)****TAKEOFF MINIMUMS AND (OBSTACLE) DEPARTURE PROCEDURES**

AMDT 5A 02MAY13 (13122) (FAA)

**TAKEOFF MINIMUMS:****Rwys 2, 20** NA-Environmental.**TAKEOFF OBSTACLE NOTES:****Rwy 14**, multiple trees and antenna beginning 2378' from DER, 934' left of centerline, up to 71' AGL/1508' MSL.**Rwy 32**, multiple tree and towers beginning 2976' from DER, 284' right of centerline, 65' AGL/1525' MSL.

Tower 3157' from DER, 254' left of centerline, 73' AGL/1527' MSL.

**CONCORDIA, KS****BLOSSER MUNI (CNK)****TAKEOFF MINIMUMS AND (OBSTACLE) DEPARTURE PROCEDURES**

ORIG 27JAN22 (22027) (FAA)

**TAKEOFF MINIMUMS:****Rwys 12, 30**, NA-Environmental.**Rwy 36**, 300-1 or std. w/min. climb of 463' per NM to 1700.**TAKEOFF OBSTACLE NOTES:****Rwy 18**, tree 485' from DER, 73' right of centerline, 1514' MSL.

Tree 503' from DER, 535' left of centerline, 1511' MSL.

Trees beginning 506' from DER, 14' left of centerline, up to 38' AGL/1518' MSL.

Trees beginning 534' from DER, 18' left of centerline, up to 1525' MSL.

Tree, terrain beginning 585' from DER, 21' right of centerline, up to 1515' MSL.

Tree, terrain beginning 668' from DER, 3' right of centerline, up to 1522' MSL.

Trees beginning 798' from DER, 2' left of centerline, up to 41' AGL/1529' MSL.

Trees, terrain beginning 823' from DER, 1' right of centerline, up to 1524' MSL.

Trees, terrain beginning 927' from DER, 6' right of centerline, up to 1529' MSL.

Tree, terrain beginning 1057' from DER, 8' right of centerline, up to 1536' MSL.

Terrain 1404' from DER, 751' right of centerline, 1537' MSL.

Terrain beginning 1457' from DER, 593' right of centerline, up to 1541' MSL.

Tree 1740' from DER, 204' left of centerline, 44' AGL/1532' MSL.

Trees beginning 1798' from DER, 77' left of centerline, up to 49' AGL/1546' MSL.

Tree 1799' from DER, 463' right of centerline, 1545' MSL.

Pole, trees, building beginning 1800' from DER, 25' right of centerline, up to 29' AGL/1573' MSL.

Trees beginning 1820' from DER, 5' left of centerline, up to 52' AGL/1548' MSL.

Trees, terrain beginning 1912' from DER, 5' right of centerline, up to 1600' MSL.

Trees beginning 2014' from DER, 3' right of centerline, up to 54' AGL/1603' MSL.

Trees, terrain beginning 2081' from DER, 1' right of centerline, up to 1604' MSL.

Tree 2189' from DER, 5' left of centerline, 45' AGL/1549' MSL.

Trees, terrain beginning 2191' from DER, on centerline, up to 1605' MSL.

Trees beginning 2232' from DER, 67' left of centerline, up to 44' AGL/1552' MSL.

Trees beginning 2352' from DER, 14' left of centerline, up to 45' AGL/1559' MSL.

Trees beginning 2514' from DER, 27' left of centerline, up to 36' AGL/1560' MSL.

Trees, terrain beginning 2670' from DER, 235' right of centerline, up to 1613' MSL.

Trees, terrain, poles, bush beginning 2686' from DER, on centerline, up to 1618' MSL.

Trees beginning 2992' from DER, 6' left of centerline, up to 58' AGL/1564' MSL.

Tree 3014' from DER, 27' left of centerline, 62' AGL/1567' MSL.

Tree 3016' from DER, 16' left of centerline, 64' AGL/1571' MSL.

Tree 3300' from DER, 185' left of centerline, 64' AGL/1572' MSL.

Tree 3338' from DER, 186' left of centerline, 67' AGL/1573' MSL.

Tree 3766' from DER, 29' left of centerline, 38' AGL/1583' MSL.

Tree 3792' from DER, 19' left of centerline, 40' AGL/1588' MSL.

Trees beginning 3804' from DER, 5' left of centerline, up to 41' AGL/1592' MSL.

Trees beginning 3873' from DER, 49' left of centerline, up to 38' AGL/1593' MSL.

Tree 3900' from DER, 32' left of centerline, 39' AGL/1594' MSL.

Trees beginning 3905' from DER, 21' left of centerline, up to 39' AGL/1595' MSL.

Trees beginning 3928' from DER, 12' left of centerline, up to 40' AGL/1597' MSL.

Trees beginning 3934' from DER, 24' left of centerline, up to 37' AGL/1598' MSL.

Trees beginning 3967' from DER, 3' left of centerline, up to 39' AGL/1600' MSL.

Tree 4465' from DER, 387' left of centerline, 30' AGL/1601' MSL.

**Rwy 36**, tree 788' from DER, 438' right of centerline, 1498' MSL.

Tree 952' from DER, 688' right of centerline, 1504' MSL.

Pole 1339' from DER, 479' right of centerline, 1517' MSL.

Water tower, tank beginning 1654' from DER, 703' right of centerline, up to 121' AGL/1585' MSL.

Tower 2741' from DER, 1217' right of centerline, 172' AGL/1634' MSL.

22 FEB 2024 to 21 MAR 2024

22 FEB 2024 to 21 MAR 2024


**TAKEOFF MINIMUMS, (OBSTACLE) DEPARTURE PROCEDURES, AND  
DIVERSE VECTOR AREA (RADAR VECTORS)**


24025

# TAKEOFF MINIMUMS, (OBSTACLE) DEPARTURE PROCEDURES, AND DIVERSE VECTOR AREA (RADAR VECTORS)

24025

## COZAD, NE

### COZAD MUNI (CZD)

#### TAKEOFF MINIMUMS AND (OBSTACLE) DEPARTURE PROCEDURES

AMDT 1A 20AUG15 (15232) (FAA)

#### TAKEOFF MINIMUMS:

**Rwys 18, 36**, NA - Environmental.

**Rwy 13**, 200-1 or std. w/min. climb of 372' per NM to 2800.

#### TAKEOFF OBSTACLE NOTES:

**Rwy 13**, grain elevators 3968' from DER, 103' right of centerline, 157' AGL/2678' MSL.

Multiple poles beginning 13' from DER, 372' right of centerline, up to 43' AGL/2540' MSL.

Multiple buildings beginning 97' from DER, 356' right of centerline, up to 18' AGL/2515' MSL.

Fuel tank 22' from DER, 372' right of centerline, 13' AGL/ 2509' MSL.

Elevator 3671' from DER, 392' left of centerline, 192' AGL/2668' MSL.

Multiple trees beginning 222' from DER, 24' left of centerline, up to 68' AGL/2562' MSL.

Grain elevator 5482' from DER, 1120' from DER, 170' AGL/ 2660' MSL.

Building light 5439' from DER, 1086' left of centerline, 167' AGL/2657' MSL.

Multiple light poles beginning 290' from DER, 370' left of centerline, up to 57' AGL/ 2551' MSL.

Multiple satellite dishes beginning 870' from DER, 432' left of centerline, up to 54' AGL/ 2549' MSL.

Multiple buildings beginning 141' from DER, 88' left of centerline, up to 56' AGL/ 2550' MSL.

Fence 1' from DER, 369' left of centerline, 4' AGL/2500' MSL. Diving board 575' from DER, 572' left of centerline, 13' AGL/2513' MSL.

**Rwy 31**, multiple trees and buildings beginning 136' from DER, 450' right of centerline, up to 100' AGL/2604' MSL.

Building 608' from DER, 547' left of centerline, up to 50' AGL/2554' MSL.

## CREIGHTON, NE

### CREIGHTON MUNI (6K3)

#### TAKEOFF MINIMUMS AND (OBSTACLE) DEPARTURE PROCEDURES

ORIG-A 17SEP15 (15260) (FAA)

#### TAKEOFF MINIMUMS:

**Rwy 18, 36**, NA-Environmental.

#### TAKEOFF OBSTACLE NOTES:

**Rwy 13**, trees beginning 400' from DER, 328' left of centerline, up to 40' AGL/1689' MSL.

Vehicle on road 421' from DER, 554' left of centerline, 15' AGL/1656' MSL.

Building 663' from DER, 469' left of centerline, 25' AGL/1661' MSL.

**Rwy 31**, trees beginning 766' from DER, 545' right of centerline, up to 40' AGL/1664' MSL.

## CRETE, NE

### CRETE MUNI (CEK)

#### TAKEOFF MINIMUMS AND (OBSTACLE) DEPARTURE PROCEDURES

AMDT 1 31JUL08 (08213) (FAA)

#### TAKEOFF MINIMUMS:

**Rwys 13, 31**, NA - Environmental.

#### TAKEOFF OBSTACLE NOTES:

**Rwy 17**, numerous trees 193' from DER, 164' left of centerline, 42' AGL/1509' MSL.

Numerous trees 18' from DER, 298' right of centerline, 20' AGL/1486' MSL.

**Rwy 35**, numerous trees and building 201' from DER, 259' right of centerline, 62' AGL/1580' MSL.

Buildings 72' from DER, 400' left of centerline, 20' AGL/1514' MSL.

## CURTIS, NE

### CURTIS MUNI (47V)

#### TAKEOFF MINIMUMS AND (OBSTACLE) DEPARTURE PROCEDURES

ORIG 30APR15 (15120) (FAA)

#### TAKEOFF MINIMUMS:

**Rwy 17, 35**, NA-Environmental.

#### TAKEOFF OBSTACLE NOTES:

**Rwy 12**, pole and light support structure 10' from DER, 9' left of centerline, 2' AGL/2663' MSL.

Tree 90' from DER, 215' left of centerline, 60ft AGL/2687' MSL.

Vehicle on road 277' from DER, 566' right of centerline, 17' AGL/2676' MSL.

Trees, building and pole beginning 289ft from DER, 303' right of centerline, up to 60' AGL/2694' MSL.

**Rwy 30**, vehicles on roads beginning 6' from DER, 409' left of centerline, up to 15' AGL/2685' MSL.

Trees beginning 310' from DER, 399' left of centerline, up to 60' AGL/2708' MSL.

Electrical system and light support structure 10' from DER, 9' right of centerline, 2' AGL/2663' MSL.

Vehicles on roads beginning 21' from DER, 277' right of centerline, up to 15' AGL/2694' MSL.

# TAKEOFF MINIMUMS, (OBSTACLE) DEPARTURE PROCEDURES, AND DIVERSE VECTOR AREA (RADAR VECTORS)

24025

NC-2

# TAKEOFF MINIMUMS, (OBSTACLE) DEPARTURE PROCEDURES, AND DIVERSE VECTOR AREA (RADAR VECTORS)

24025

## DAVID CITY, NE

DAVID CITY MUNI (93Y)

TAKEOFF MINIMUMS AND (OBSTACLE) DEPARTURE PROCEDURES

AMDT 1 17DEC09 (09351) (FAA)

TAKEOFF MINIMUMS:

**Rwys 1, 19**, NA-turf runway.

TAKEOFF OBSTACLE NOTES:

**Rwy 32**, trees beginning at DER, 327' left of centerline, up to 29' AGL/1642' MSL.

Trees beginning 1864' from DER, 99' left of centerline, up to 58' AGL/1671' MSL.

Vehicle on highway 886' from DER, 711' left of centerline, 15' AGL/1636' MSL.

## EL DORADO, KS

EL DORADO/CAPTAIN JACK THOMAS MEML (EQA)

TAKEOFF MINIMUMS AND (OBSTACLE) DEPARTURE PROCEDURES

ORIG 10MAR11 (21112) (FAA)

TAKEOFF OBSTACLE NOTES:

**Rwy 4**, tree 1819' from DER, 561' right of centerline, 100' AGL/1499' MSL.

Vehicle on road 806' from DER, crossing centerline left to right, 15' AGL/1404' MSL.

**Rwy 15**, trees beginning 963' from DER, 613' left of centerline, up to 100' AGL/1459' MSL.

Tree 536' from DER, 507' right of centerline, 29' AGL/1399' MSL.

Vehicle on road 556' from DER, crossing centerline right to left, 15' AGL/1394' MSL.

**Rwy 22**, vehicle on road 267' from DER, crossing centerline right to left, 15' AGL/1394' MSL.

Tree 1470' from DER, 538' left of centerline, 100' AGL/1469' MSL.

**Rwy 33**, multiple trees beginning 43' from DER, 61' left of centerline, up to 100' AGL/ 1469' MSL.

Vehicle on road 488' from DER, crossing centerline right to left, 15' AGL/1394' MSL.

## ELKHART, KS

ELKHART-MORTON COUNTY (EHA)

TAKEOFF MINIMUMS AND (OBSTACLE) DEPARTURE PROCEDURES

AMDT 1 03JUN10 (10154) (FAA)

DEPARTURE PROCEDURE:

**Rwy 22**, climb heading 221° to 4100 before turning right.

TAKEOFF OBSTACLE NOTES:

**Rwy 4**, tree 181' from DER, 425' left of centerline, 100' AGL/3689' MSL.**Rwy 17**, multiple mobiles beginning 576' from DER, 79' left of centerline, up to 18' AGL/3635' MSL.

Vehicles on road beginning 503' from DER, 202' right of centerline, up to 15' AGL/3633' MSL.

Vehicles on road beginning 508' from DER, 1' left of centerline, up to 15' AGL/3632' MSL.

Post 8' from DER, 306' left of centerline, 3' AGL/3619' MSL.

**Rwy 22**, vehicle on road 255' from DER, 485' left of centerline, 15' AGL/3633' MSL.**Rwy 35**, Post 5' from DER, 321' left of centerline, 6' AGL/3609' MSL.

Tree 337' from DER, 463' left of centerline, 100' AGL/3709' MSL.

## ELLSWORTH, KS

ELLSWORTH MUNI (9K7)

TAKEOFF MINIMUMS AND (OBSTACLE) DEPARTURE PROCEDURES

ORIG 29DEC22 (22363) (FAA)

TAKEOFF MINIMUMS:

**Rwys 13, 31**, NA-Environmental.**Rwy 35**, std. w/min. climb of 225' per NM to 2400, or 1000-3 for VCOA.

DEPARTURE PROCEDURE:

**Rwy 17**, climb on heading 173° to 2200 before proceeding on course.**Rwy 35**, climb on heading 353° to 2400 before proceeding on course.

VCOA:

**Rwy 35**, obtain ATC approval for VCOA when requesting IFR clearance. Climb in visual conditions to cross Ellsworth Muni at or above 2500 before proceeding on course.

TAKEOFF OBSTACLE NOTES:

**Rwy 17**, sign 107' from DER, 349' right of centerline, 6' AGL/1613' MSL.

Poles beginning 665' from DER, 510' right of centerline, up to 1635' MSL.

Tree 948' from DER, 745' left of centerline, 1641' MSL.

Tree 977' from DER, 475' right of centerline, 1637' MSL.

Poles, tree beginning 1012' from DER, 481' right of centerline, up to 1654' MSL.

Tree 1203' from DER, 803' left of centerline, 1642' MSL.

Tree 1293' from DER, 567' left of centerline, 1643' MSL.

Tree 1372' from DER, 288' left of centerline, 63' AGL/1647' MSL.

Tree 1739' from DER, 391' left of centerline, 1654' MSL.

Water tower 3546' from DER, 1385' right of centerline, 142' AGL/1733' MSL.

**Rwy 35**, terrain 13' from DER, 488' right of centerline, 1634' MSL.

Terrain 86' from DER, 451' left of centerline, 1636' MSL.

Terrain 158' from DER, 540' left of centerline, 1637' MSL.

Tree 917' from DER, 647' right of centerline, 1669' MSL.

Trees beginning 1085' from DER, 643' right of centerline, up to 1674' MSL.

22 FEB 2024 to 21 MAR 2024

22 FEB 2024 to 21 MAR 2024

# TAKEOFF MINIMUMS, (OBSTACLE) DEPARTURE PROCEDURES, AND DIVERSE VECTOR AREA (RADAR VECTORS)

24025

NC-2

# TAKEOFF MINIMUMS, (OBSTACLE) DEPARTURE PROCEDURES, AND DIVERSE VECTOR AREA (RADAR VECTORS)

24025

## EMPORIA, KS

EMPORIA MUNI (EMP)

TAKEOFF MINIMUMS AND (OBSTACLE) DEPARTURE PROCEDURES

ORIG-A 21JUL16 (16203) (FAA)

TAKEOFF MINIMUMS:

**Rwy 6, 24**, NA-Environmental.**Rwy 19**, 400-3 or std. w/min. climb of 225' per NM to 1800.

TAKEOFF OBSTACLE NOTES:

**Rwy 1**, tree 70' from DER, 394' left of centerline, 1205' MSL.

Vehicle on roads beginning 199' from DER, 417' left of centerline, up to 15' AGL/1208' MSL.

Tree 490' from DER, 388' left of centerline, 1209' MSL.

**Rwy 19**, tree and bush 66' from DER, 283' left of centerline, up to 40' AGL/1226' MSL.

Tower 2.4 NM from DER, 3901' right of centerline, 300' AGL/1565' MSL.

## EUREKA, KS

LT WILLIAM M MILLIKEN (13K)

TAKEOFF MINIMUMS AND (OBSTACLE) DEPARTURE PROCEDURES

ORIG-A 26APR18 (18116) (FAA)

TAKEOFF MINIMUMS:

**Rwy 18**, 600-3 or std. with a min. climb 345' per NM to 2000.**Rwys 8, 26**, NA - Environmental.

## FAIRBURY, NE

FAIRBURY MUNI (FBY)

TAKEOFF MINIMUMS AND (OBSTACLE) DEPARTURE PROCEDURES

ORIG 31JUL08 (08213) (FAA)

TAKEOFF MINIMUMS:

**Rwys 11, 29**, NA-VFR/Turf Rwy.

TAKEOFF OBSTACLE NOTES:

**Rwy 17**, multiple trees beginning 7' from DER, 463' right of centerline, up to 53' AGL/1507' MSL.

Multiple poles beginning 587' from DER, 481' right of centerline, up to 38' AGL/1492' MSL.

Light tower 573' from DER, 612' right of centerline, 46' AGL/1501' MSL.

Satellite dish 531' from DER, 571' right of centerline, up to 38' AGL/1494' MSL.

**Rwy 35**, multiple poles beginning 93' from DER, 319' left of centerline, up to 29' AGL/1508' MSL.

Poles beginning 849' from DER, 415' right of centerline, up to 26' AGL/1503' MSL.

Fence 79' from DER, 417' left of centerline, 4' AGL/1483' MSL.

## FAIRMONT, NE

FAIRMONT STATE (FMZ)

TAKEOFF MINIMUMS AND (OBSTACLE) DEPARTURE PROCEDURES

AMD T 1 31JAN19 (22251) (FAA)

DEPARTURE PROCEDURE:

**Rwy 30**, climb heading 308° to 2300 before turning right.

TAKEOFF OBSTACLE NOTES:

**Rwy 30**, trees beginning 2683' from DER, 143' right of centerline, up to 100' AGL/1739' MSL.

## FALLS CITY, NE

BRENNER FLD (FNB)

TAKEOFF MINIMUMS AND (OBSTACLE) DEPARTURE PROCEDURES

AMD T 4 11DEC14 (21224) (FAA)

DEPARTURE PROCEDURE:

**Rwy 15**, climb heading 146° to 1500 before turning right.

TAKEOFF OBSTACLE NOTES:

**Rwy 15**, trees beginning 197' from DER, right and left of centerline, up to 120' AGL/1005' MSL.

Trees beginning 2604' from DER, 582' right of centerline, up to 120' AGL/1064' MSL.

Poles beginning 256' from DER, left and right of centerline, up to 34' AGL/992' MSL.

Catenary 293' from DER, 401' right of centerline, 31' AGL/989' MSL.

**Rwy 33**, fence beginning 43' from DER, 300' right of centerline, up to 5' AGL/992' MSL.

Trees beginning 70' from DER, 244' left of centerline, up to 120' AGL/1055' MSL.

Trees beginning 696' from DER, 196' left of centerline, up to 120' AGL/1042' MSL.

22 FEB 2024 to 21 MAR 2024

22 FEB 2024 to 21 MAR 2024

# TAKEOFF MINIMUMS, (OBSTACLE) DEPARTURE PROCEDURES, AND DIVERSE VECTOR AREA (RADAR VECTORS)

24025

NC-2


**TAKEOFF MINIMUMS, (OBSTACLE) DEPARTURE PROCEDURES, AND**

  
**DIVERSE VECTOR AREA (RADAR VECTORS)**

24025

**FORT LEAVENWORTH, KS**

SHERMAN AAF (FLV)

TAKEOFF MINIMUMS AND (OBSTACLE) DEPARTURE PROCEDURES

ORIG 27OCT05 (05300) (FAA)

DEPARTURE PROCEDURE:

**Rwy 16**, Climb via heading 155° to 1700 before turning southwest.

TAKEOFF OBSTACLE NOTES:

**Rwy 16**, road 79' from DER, across departure course, up to 15' AGL/779' MSL.

Building 400' from DER, 580' left of centerline, 28' AGL/788' MSL.

Pump house 444' from DER, 564' left of centerline, 23' AGL/783' MSL.

Boats 1063' from DER, across departure course, up to 45' AGL/800' MSL.

Trees 2165' from DER, across departure course, up to 75' AGL/838' MSL.

**Rwy 34**, multiple trees and poles beginning 117' from DER on centerline, up to 100' AGL/879' MSL.

Levee 187' from DER, on centerline, 35' AGL/782' MSL.

**FORT SCOTT, KS**

FORT SCOTT MUNI (FSK)

TAKEOFF MINIMUMS AND (OBSTACLE) DEPARTURE PROCEDURES

ORIG 30AUG07 (07242) (FAA)

TAKEOFF OBSTACLE NOTES:

**Rwy 18**, multiple trees beginning 673' from DER, 275' left of centerline, up to 43' AGL/962' MSL.

Vehicle on road 621' from DER, 25' left of centerline, 15' AGL/935' MSL.

Tree 654' from DER, 214' right of centerline, 28' AGL/947' MSL.

Fence 193' from DER, 370' right of centerline, 8' AGL/926' MSL.

**Rwy 36**, multiple trees beginning 137' from DER, 305' left of centerline, up to 43' AGL/952' MSL.

Fence 204' from DER, 284' left of centerline, 8' AGL/911' MSL.

Multiple trees beginning 359' from DER, 399' right of centerline, up to 44' AGL/933' MSL.

**FREMONT, NE**

FREMONT MUNI (FET)

TAKEOFF MINIMUMS AND (OBSTACLE) DEPARTURE PROCEDURES

AMDT 6B 11AUG22 (22223) (FAA)

TAKEOFF MINIMUMS:

**Rwy 14**, 300-1½ or std. w/min. climb of 255' per NM to 1500.

TAKEOFF OBSTACLE NOTES:

**Rwy 14**, vegetation 16' from DER, 477' right of centerline, 1205' MSL.

Vegetation 18' from DER, 142' left of centerline, 1204' MSL.

Trees beginning 691' from DER, 239' right of centerline, up to 1263' MSL.

Tree 1225' from DER, 294' left of centerline, 1246' MSL.

Trees beginning 1249' from DER, 183' right of centerline, up to 1271' MSL.

Trees beginning 1286' from DER, 43' left of centerline, up to 1254' MSL.

Tree, tower beginning 1525' from DER, 12' left of centerline, up to 1263' MSL.

Trees beginning 1577' from DER, 3' right of centerline, up to 1272' MSL.

Trees beginning 1861' from DER, 186' left of centerline, up to 1267' MSL.

Trees beginning 2016' from DER, 61' left of centerline, up to 1270' MSL.

Trees beginning 2187' from DER, 949' left of centerline, up to 1275' MSL.

**Rwy 32**, vegetation 105' from DER, 483' left of centerline, 1209' MSL.

Pole, vehicles on road beginning 422' from DER, 95' left of centerline, up to 24' AGL/1231' MSL.

Pole beginning 446' from DER, 32' right of centerline, up to 24' AGL/1231' MSL.

Pole beginning 585' from DER, 460' right of centerline, up to 41' AGL/1246' MSL.

Tree 1061' from DER, 518' left of centerline, 1241' MSL.

Tree 1165' from DER, 722' left of centerline, 1250' MSL.

Trees beginning 1205' from DER, 343' left of centerline, up to 1263' MSL.

Trees beginning 1272' from DER, 176' left of centerline, up to 1286' MSL.

Tree 3975' from DER, 1440' right of centerline, 1304' MSL.

**GARDEN CITY, KS**

GARDEN CITY RGNL (GCK)

TAKEOFF MINIMUMS AND (OBSTACLE) DEPARTURE PROCEDURES

ORIG 05JUL07 (07186) (FAA)

TAKEOFF OBSTACLE NOTES:

**Rwy 12**, multiple trees beginning 585' from DER, 431' left of centerline, up to 52' AGL/2926' MSL.

**TAKEOFF MINIMUMS, (OBSTACLE) DEPARTURE PROCEDURES, AND**

  
**DIVERSE VECTOR AREA (RADAR VECTORS)**

24025

# TAKEOFF MINIMUMS, (OBSTACLE) DEPARTURE PROCEDURES, AND DIVERSE VECTOR AREA (RADAR VECTORS)

24025

## GOODLAND, KS

RENNER FLD/GOODLAND MUNI (GLD)

TAKEOFF MINIMUMS AND (OBSTACLE) DEPARTURE PROCEDURES

AMDT 6 08SEP22 (22251) (FAA)

TAKEOFF MINIMUMS:

**Rwys 17, 35**, NA-Environmental.

DEPARTURE PROCEDURE:

**Rwy 23**, climb on heading 234° to 4200 before turning left.

TAKEOFF OBSTACLE NOTES:

**Rwy 5**, trees beginning 407' from DER, 167' right of centerline, up to 3647' MSL.

**Rwy 12**, terrain 3' from DER, 198' right of centerline, 3654' MSL.

Terrain, sign beginning 13' from DER, 350' right of centerline, up to 3656' MSL.

**Rwy 23**, terrain 49' from DER, 347' left of centerline, 3659' MSL.

Fence 188' from DER, 509' left of centerline, 10' AGL/3668' MSL.

Tree 217' from DER, 542' left of centerline, 25' AGL/3683' MSL.

Building 299' from DER, 542' right of centerline, 23' AGL/3679' MSL.

Trees, vehicles on road beginning 361' from DER, 78' left of centerline, up to 3689' MSL.

Vehicles on road beginning 649' from DER, 220' right of centerline, up to 3681' MSL.

Vehicles on road beginning 687' from DER, 124' right of centerline, up to 3682' MSL.

Vehicles on road 732' from DER, 80' right of centerline, 3683' MSL.

Vehicle 771' from DER, 4' right of centerline, 3684' MSL.

Pole, trees beginning 995' from DER, 419' left of centerline, up to 38' AGL/3701' MSL.

Poles beginning 1386' from DER, 358' left of centerline, up to 38' AGL/3702' MSL.

Pole 1469' from DER, 487' left of centerline, 38' AGL/3703' MSL.

Poles beginning 1512' from DER, 421' left of centerline, up to 39' AGL/3704' MSL.

Poles beginning 1587' from DER, 169' left of centerline, up to 42' AGL/3707' MSL.

Poles beginning 1855' from DER, 106' left of centerline, up to 43' AGL/3711' MSL.

Tree 2085' from DER, 868' left of centerline, 53' AGL/3722' MSL.

Trees, building beginning 2202' from DER, 43' left of centerline, up to 57' AGL/3726' MSL.

Tree 2287' from DER, 61' right of centerline, 3719' MSL.

Tree 2368' from DER, 19' right of centerline, 3722' MSL.

Trees beginning 2433' from DER, 52' right of centerline, up to 3733' MSL.

Tree 2507' from DER, 260' left of centerline, 3728' MSL.

**Rwy 30**, fence, NAVAID beginning 10' from DER, 125' left of centerline, up to 6' AGL/3655' MSL.

NAVAID 40' from DER, 124' right of centerline, 4' AGL/3647' MSL.

Trees beginning 73' from DER, 240' left of centerline, up to 3670' MSL.

Trees beginning 166' from DER, 390' left of centerline, up to 3673' MSL.

Grain elevators beginning 656' from DER, 566' left of centerline, up to 33' AGL/3677' MSL.

**Rwy 30**, grain elevators, trees beginning 727' from DER, 459' left of centerline, up to 33' AGL/3680' MSL.

Tree 1095' from DER, 641' right of centerline, 3674' MSL.

## GORDON, NE

GORDON MUNI (GRN)

TAKEOFF MINIMUMS AND (OBSTACLE) DEPARTURE PROCEDURES

AMDT 2A 07APR11 (11097) (FAA)

TAKEOFF MINIMUMS:

**Rwy 29**, 300-1.

DEPARTURE PROCEDURE:

**Rwys 22, 29**, climb runway heading to 4400 before turning.

TAKEOFF OBSTACLE NOTES:

**Rwy 22**, trees beginning 909' from DER, 24' right of centerline, up to 56' AGL/3594' MSL.

Trees beginning 555' from DER, 109' left of centerline, up to 73' AGL/3622' MSL.

Tree 1515' from DER, on centerline, up to 43' AGL/3593' MSL.

## GOTHENBURG, NE

GOTHENBURG MUNI (GTE)

TAKEOFF MINIMUMS AND (OBSTACLE) DEPARTURE PROCEDURES

AMDT 1B 24MAY18 (18144) (FAA)

TAKEOFF MINIMUMS:

**Rwys 14, 32**, NA-Environmental.

## GRAND ISLAND, NE

CENTRAL NEBRASKA RGNL (GRI)

TAKEOFF MINIMUMS AND (OBSTACLE) DEPARTURE PROCEDURES

ORIG 20DEC07 (07354) (FAA)

TAKEOFF OBSTACLE NOTES:

**Rwy 13**, tree 1334' from DER, 730' left of centerline, 39' AGL/1881' MSL.

22 FEB 2024 to 21 MAR 2024

22 FEB 2024 to 21 MAR 2024

# TAKEOFF MINIMUMS, (OBSTACLE) DEPARTURE PROCEDURES, AND DIVERSE VECTOR AREA (RADAR VECTORS)

24025

NC-2

# TAKEOFF MINIMUMS, (OBSTACLE) DEPARTURE PROCEDURES, AND DIVERSE VECTOR AREA (RADAR VECTORS)

24025

## GRANT, NE

### GRANT MUNI (GGF)

#### TAKEOFF MINIMUMS AND (OBSTACLE) DEPARTURE PROCEDURES

ORIG 31JUL08 (08213) (FAA)

#### TAKEOFF OBSTACLE NOTES:

- Rwy 15, post 7' from DER, 297' left of centerline, 4' AGL/3424' MSL.
- Post 5' from DER, 300' left of centerline, 5' AGL/3424' MSL.
- Road with vehicle 524' from DER, 525' left of centerline, 17' AGL/3442' MSL.
- Trees beginning 128' from DER, 304' left of centerline, up to 100' AGL/3442' MSL.
- Rwy 33, terrain 107' from DER, 352' left of centerline, 0' AGL/3426' MSL.
- Fence 226' from DER, 505' left of centerline, 8' AGL/3430' MSL.
- Terrain beginning 102' from DER, 199' right of centerline, up to 0' AGL/3429' MSL.
- Fence 3' from DER, 496' right of centerline, 4' AGL/3426' MSL.

## GREAT BEND, KS

### GREAT BEND MUNI (GBD)

#### TAKEOFF MINIMUMS AND (OBSTACLE) DEPARTURE PROCEDURES

ORIG 20NOV08 (08325) (FAA)

#### DEPARTURE PROCEDURE:

- Rwy 35, climb heading 352° to 3200 before turning eastbound.

#### TAKEOFF OBSTACLE NOTES:

- Rwy 35, tree 1312' from DER, 826' left of centerline, 62' AGL/1946' MSL.

## HARPER, KS

### HARPER MUNI (8K2)

#### TAKEOFF MINIMUMS AND (OBSTACLE) DEPARTURE PROCEDURES

AMDT 1 10SEP20 (20254) (FAA)

#### TAKEOFF MINIMUMS:

Rwys 12, 30, NA - Environmental

#### TAKEOFF OBSTACLE NOTES:

- Rwy 17, trees 136' from DER, 491' right of centerline, 100' AGL/1518' MSL.
- Trees beginning 159' from DER, 8' right of centerline, up to 100' AGL/1524' MSL.
- Trees beginning 205' from DER, 2' left of centerline, up to 100' AGL/1524' MSL.
- Trees beginning 3364' from DER, 128' left of centerline, up to 100' AGL/1528' MSL.
- Rwy 35, trees beginning 174' from DER, 95' right of centerline, up to 100' AGL/1528' MSL.
- Trees, vehicles on road beginning 220' from DER, 34' left of centerline, up to 100' AGL/1524' MSL.
- Trees, transmission line beginning 377' from DER, 26' right of centerline, up to 100' AGL/1531' MSL.
- Trees beginning 438' from DER, 1' left of centerline, up to 100' AGL/1531' MSL.
- Trees beginning 2265' from DER, 55' right of centerline, up to 100' AGL/1534' MSL.
- Trees, transmission line beginning 2357' from DER, 128' left of centerline, up to 100' AGL/1534' MSL.
- Trees beginning 3264' from DER, 12' left of centerline, up to 100' AGL/1538' MSL.
- Trees, transmission line beginning 3450' from DER, 170' right of centerline, up to 100' AGL/1538' MSL.

## HARTINGTON, NE

### HARTINGTON MUNI/BUD BECKER FLD (0B4)

#### TAKEOFF MINIMUMS AND (OBSTACLE) DEPARTURE PROCEDURES

ORIG-A 04FEB16 (21140) (FAA)

#### TAKEOFF MINIMUMS:

Rwys 3, 21, NA-Environmental.

#### DEPARTURE PROCEDURE:

- Rwy 31, climb heading 315° to 1900 before turning right.

#### TAKEOFF OBSTACLE NOTES:

- Rwy 13, vehicles on road beginning 21' from DER, left and right of centerline, up to 15' AGL/1425' MSL.
- Terrain 137' from DER, 493' right of centerline 1424' MSL.
- Trees beginning 48' from DER, 269' left of centerline, up to 50' AGL/1415' MSL.
- Rwy 31, trees beginning 1064' from DER, 742' left of centerline, up to 50' AGL/1495' MSL.
- Antenna towers beginning 2581' from DER, 346' left of centerline, 90' AGL/1489' MSL.
- Utility poles and signs beginning 3029' from DER, 929' left of centerline, 85' AGL/1484' MSL.
- Building peaks beginning 3173' from DER, 35' left of centerline, 90' AGL/1513' MSL.
- Light pole 3776' from DER, 1117' left of centerline, 85' AGL/1512' MSL.
- Utility pole 3518' from DER, 1144' left of centerline, 98' AGL/1513' MSL.
- Smokestack 3791' from DER, 1042' left of centerline, 80' AGL/1489' MSL.
- Trees and building peaks beginning 3257' from DER, 250' right of centerline, up to 100' AGL/1475' MSL.

# TAKEOFF MINIMUMS, (OBSTACLE) DEPARTURE PROCEDURES, AND DIVERSE VECTOR AREA (RADAR VECTORS)

24025

NC-2



# TAKEOFF MINIMUMS, (OBSTACLE) DEPARTURE PROCEDURES, AND DIVERSE VECTOR AREA (RADAR VECTORS)

24025

## HARVARD, NE

### HARVARD STATE (08K)

TAKEOFF MINIMUMS AND (OBSTACLE) DEPARTURE PROCEDURES

ORIG-A 03NOV22 (22307) (FAA)

TAKEOFF MINIMUMS:

**Rwys 14, 32**, NA-Environmental.**Rwy 35**, std. w/min. climb of 232' per NM to 3500 or 1100-3 for VCOA VCOA:**Rwy 35**, obtain ATC approval for VCOA when requesting IFR clearance. Climb in visual conditions to cross Harvard State airport at or above 2800 before proceeding on course.

TAKEOFF OBSTACLE NOTES:

**Rwy 35**, terrain 39' from DER, 451' left of centerline, 1818' MSL.

## HASTINGS, NE

### HASTINGS MUNI (HSI)

TAKEOFF MINIMUMS AND (OBSTACLE) DEPARTURE PROCEDURES

AMDT 3 12MAR09 (09071) (FAA)

DEPARTURE PROCEDURE:

**Rwy 4**, climb heading 090° to 3000 before proceeding on course.**Rwy 32**, climb heading 323° to 2500 before turning right.

TAKEOFF OBSTACLE NOTES:

**Rwy 14**, vehicle on road 202' from DER, 386' left of centerline, 15' AGL/1952' MSL.

Tree 625' from DER, 498' right of centerline, 17' AGL/1961' MSL.

Light pole 620' from DER, 657' right of centerline, 35' AGL/1977' MSL.

Multiple trees beginning 835' from DER, 558' left of centerline, up to 61' AGL/2010' MSL.

## HAYS, KS

### HAYS RGNL (HYS)

TAKEOFF MINIMUMS AND (OBSTACLE) DEPARTURE PROCEDURES

AMDT 2 28JUN92 (92180) (FAA)

DEPARTURE PROCEDURE:

**Rwy 34**, westbound departures (160° CW 340°) climb runway heading 3100 before proceeding on course.

## HEBRON, NE

### HEBRON MUNI (HJH)

TAKEOFF MINIMUMS AND (OBSTACLE) DEPARTURE PROCEDURES

ORIG-A 24MAY18 (18144) (FAA)

TAKEOFF MINIMUMS:

**Rwys 3, 21**, NA-Environmental.

TAKEOFF OBSTACLE NOTES:

**Rwy 12**, terrain 30' from DER, 407' right of centerline, 1467' MSL.

Tree 158' from DER, 233' left of centerline, 30' AGL/1487' MSL.

Trees beginning 368' from DER, 505' left of centerline, up to 1498' MSL.

Tree 386' from DER, 472' right of centerline, 59' AGL/1528' MSL.

Tree, traverse way beginning 412' from DER, 442' right of centerline, up to 61' AGL/1529' MSL.

Tree, terrain beginning 495' from DER, 320' right of centerline, up to 70' AGL/1539' MSL.

Tree, pole beginning 609' from DER, 76' left of centerline, up to 1519' MSL.

Tree, traverse way, terrain, windmill beginning 682' from DER, 9' right of centerline, up to 65' AGL/1543' MSL.

Tree 2261' from DER, 391' left of centerline, 1523' MSL.

Tree 2279' from DER, 104' left of centerline, 1527' MSL.

Tree 2407' from DER, 628' left of centerline, 1530' MSL.

**Rwy 30**, tree, terrain beginning 2' from DER, 188' left of centerline, up to 1476' MSL.

Trees beginning 52' from DER, 171' right of centerline, up to 59' AGL/1511' MSL.

Tree, terrain beginning 112' from DER, 313' left of centerline, up to 1506' MSL.

Trees beginning 446' from DER, 286' right of centerline, up to 1513' MSL.

Trees beginning 516' from DER, 333' left of centerline, up to 1512' MSL.

Trees beginning 624' from DER, 179' left of centerline, up to 1520' MSL.

Tree, transmission line, pole beginning 695' from DER, 16' left of centerline, up to 1522' MSL.

Tree, building beginning 876' from DER, 68' right of centerline, up to 1526' MSL.

Trees beginning 1321' from DER, 289' left of centerline, up to 1525' MSL.

Trees beginning 1340' from DER, 99' right of centerline, up to 1528' MSL.

Trees beginning 1453' from DER, 46' right of centerline, up to 1530' MSL.

Tree, pole, transmission line beginning 1584' from DER, 0' right of centerline, up to 1541' MSL.

22 FEB 2024 to 21 MAR 2024

22 FEB 2024 to 21 MAR 2024

# TAKEOFF MINIMUMS, (OBSTACLE) DEPARTURE PROCEDURES, AND DIVERSE VECTOR AREA (RADAR VECTORS)

24025

NC-2

# TAKEOFF MINIMUMS, (OBSTACLE) DEPARTURE PROCEDURES, AND DIVERSE VECTOR AREA (RADAR VECTORS)

24025

## HERINGTON, KS

HERINGTON RGNL (HRU)

TAKEOFF MINIMUMS AND (OBSTACLE) DEPARTURE PROCEDURES

ORIG 13JAN11 (11013) (FAA)

TAKEOFF MINIMUMS:

**Rwy 17**, 400-2¼ or std. w/min. climb of 215' per NM to 2000, or alternatively, with std. takeoff minimums and a normal 200' per NM climb gradient. Takeoff must occur no later than 1800' prior to DER.

TAKEOFF OBSTACLE NOTES:

**Rwy 17**, tower 2 NM from DER, 3564' right of centerline, 318' AGL/1808' MSL.

## HILL CITY, KS

HILL CITY MUNI (HLC)

TAKEOFF MINIMUMS AND (OBSTACLE) DEPARTURE PROCEDURES

AMDT 1 27JUN13 (13178) (FAA)

DEPARTURE PROCEDURE:

**Rwy 36**, climb heading 356° to 3000 before turning left.

TAKEOFF OBSTACLE NOTES:

**Rwy 18**, vehicles on road beginning 429' from DER, left and right of centerline, up to 15' AGL/2204' MSL.

Trees beginning 359' from DER, left and right of centerline, up to 70' AGL/2217' MSL.

**Rwy 36**, rising terrain beginning 117' from DER, 305' right of centerline, up to 2252' MSL.

Bushes beginning 158' from DER, 196' right of centerline, up to 5' AGL/2255' MSL.

Poles beginning 2432' from DER, 785' right of centerline, up to 50' AGL/2311' MSL.

Tree 3476' from DER, 1223' right of centerline, up to 20' AGL/2329' MSL.

## HOLDREGE, NE

BREWSTER FLD (HDE)

TAKEOFF MINIMUMS AND (OBSTACLE) DEPARTURE PROCEDURES

AMDT 3 20JUN19 (21140) (FAA)

TAKEOFF MINIMUMS:

**Rwys 11, 29**, NA-Environmental.

DEPARTURE PROCEDURE:

**Rwy 18**, climb heading 183° to 3800 before turning right.

TAKEOFF OBSTACLE NOTES:

**Rwy 36**, tree 207' from DER, 439' right of centerline, 16' AGL/2317' MSL.

## HUGOTON, KS

HUGOTON MUNI (HQG)

TAKEOFF MINIMUMS AND (OBSTACLE) DEPARTURE PROCEDURES

AMDT 2 14JUL22 (22195) (FAA)

TAKEOFF MINIMUMS:

**Rwy 31**, NA-Obstacles.

**Rwy 2**, 300-1¼ or std. w/min. climb of 225' per NM to 3400.

DEPARTURE PROCEDURE:

**Rwy 2**, climb heading 020° to 3800 before turning right.

TAKEOFF OBSTACLE NOTES:

**Rwy 2**, fence 18' from DER, 325' right of centerline, 3132' MSL.

Buildings beginning 26' from DER, 332' left of centerline, up to 18' AGL/3147' MSL.

Traverse way 149' from DER, 330' right of centerline, 3138' MSL.

Pole 469' from DER, 458' left of centerline, 3155' MSL.

Pole, traverse way beginning 540' from DER, 413' left of centerline, up to 36' AGL/3164' MSL.

Pole, traverse way beginning 600' from DER, 238' left of centerline, up to 38' AGL/3167' MSL.

Pole 967' from DER, 303' right of centerline, 3157' MSL.

Elevator 5870' from DER, 1139' right of centerline, 183' AGL/3293' MSL.

**Rwy 13**, terrain 3' from DER, 109' right of centerline, 3128' MSL.

Terrain 10' from DER, 5' left of centerline, 3128' MSL.

Building, general utility beginning 79' from DER, 411' right of centerline, up to 10' AGL/3138' MSL.

**Rwy 20**, traverse ways, sign beginning 1' from DER, 199' right of centerline, up to 3149' MSL.

Traverse way 193' from DER, 370' left of centerline, 3144' MSL.

Traverse ways beginning 249' from DER, 397' right of centerline, up to 3152' MSL.

Traverse ways beginning 304' from DER, 523' right of centerline, up to 3153' MSL.

22 FEB 2024 to 21 MAR 2024

22 FEB 2024 to 21 MAR 2024

# TAKEOFF MINIMUMS, (OBSTACLE) DEPARTURE PROCEDURES, AND DIVERSE VECTOR AREA (RADAR VECTORS)

24025

NC-2

# TAKEOFF MINIMUMS, (OBSTACLE) DEPARTURE PROCEDURES, AND DIVERSE VECTOR AREA (RADAR VECTORS)

24025

## HUTCHINSON, KS

### HUTCHINSON RGNL (HUT)

#### TAKEOFF MINIMUMS AND (OBSTACLE) DEPARTURE PROCEDURES

AMDT 6 07DEC17 (17341) (FAA)

##### TAKEOFF MINIMUMS:

**Rwy 35**, 200-1½ SM or std. w/ min. climb gradient of 245' per NM to 1800.

##### DEPARTURE PROCEDURE:

**Rwy 4**, climb heading 038° to 3000 before proceeding east.

**Rwy 13**, climb heading 134° to 3100 before proceeding east.

**Rwy 17**, climb heading 173° to 2600 before proceeding east.

**Rwy 22**, climb heading 218° to 2400 before proceeding east.

**Rwy 31**, climb heading 314° to 2400 before proceeding east.

**Rwy 35**, climb heading 353° to 2300 before proceeding east.

##### TAKEOFF OBSTACLE NOTES:

**Rwy 4**, tree, fence beginning 10' from DER, 230' right of centerline, up to 1575' MSL.

NAVAID 40' from DER, 150' left of centerline, 5' AGL/1547' MSL.

Tree 49' from DER, 417' left of centerline, 1551' MSL.

Tree, traverse way, terrain, fence beginning 66' from DER, 4' right of centerline, up to 1581' MSL.

Tree 166' from DER, 349' left of centerline, 1594' MSL.

Tree 248' from DER, 466' left of centerline, 1605' MSL.

Tree, terrain beginning 381' from DER, 31' left of centerline, up to 1627' MSL.

Tree, terrain, traverse way beginning 810' from DER, 4' left of centerline, up to 1633' MSL.

Traverse way, terrain beginning 1094' from DER, 99' right of centerline, up to 1585' MSL.

Tree, terrain, traverse way beginning 1227' from DER, 275' right of centerline, up to 1587' MSL.

Traverse way 1296' from DER, 678' right of centerline, 1589' MSL.

Tree, traverse way beginning 1361' from DER, 50' right of centerline, up to 1619' MSL.

Trees beginning 1520' from DER, 102' right of centerline, up to 1638' MSL.

Tree, terrain, fence beginning 1711' from DER, 1' right of centerline, up to 1649' MSL.

Tree, terrain beginning 2346' from DER, 42' left of centerline, up to 1642' MSL.

Trees beginning 2997' from DER, 25' left of centerline, up to 1653' MSL.

Trees beginning 3118' from DER, 63' right of centerline, up to 1666' MSL.

Trees beginning 3365' from DER, 147' left of centerline, up to 1664' MSL.

Trees beginning 4577' from DER, 471' right of centerline, up to 1670' MSL.

Tree 4740' from DER, 1397' left of centerline, 1687' MSL.

Trees beginning 4751' from DER, 559' right of centerline, up to 1676' MSL.

Trees beginning 4812' from DER, 27' left of centerline, up to 1688' MSL.

Tree 4897' from DER, 690' right of centerline, 1677' MSL.

Tree 5475' from DER, 548' right of centerline, 1693' MSL.

**Rwy 13**, traverse way 0' from DER, 202' right of centerline, 1529' MSL.

Tree 4' from DER, 225' left of centerline, 1524' MSL.

Building and trees beginning 19' from DER, 308' right of centerline, up to 75' AGL/1594' MSL.

Tower and trees beginning 24' from DER, 251' left of centerline, up to 75' AGL/1594' MSL.

**Rwy 17**, traverse way 507' from DER, 479' right of centerline, 1532' MSL.

**Rwy 22**, sign 33' from DER, 264' left of centerline, 2' AGL/1518' MSL.

Wind indicator 127' from DER, 462' right of centerline, 10' AGL/1527' MSL.

Traverse way 479' from DER, 146' right of centerline, 1531' MSL.

Tree 2174' from DER, 673' right of centerline, 1580' MSL.

Antenna 5094' from DER, 1216' left of centerline, 128' AGL/1645' MSL.

Tower 5103' from DER, 1228' left of centerline, 134' AGL/1646' MSL.

**Rwy 31**, traverse way beginning 39' from DER, 111' left of centerline, up to 1539' MSL.

Tree 216' from DER, 545' right of centerline, 75' AGL/1614' MSL.

Tree 1439' from DER, 839' left of centerline, 1570' MSL.

Tree 1463' from DER, 689' left of centerline, 1572' MSL.

Trees beginning 1575' from DER, 809' right of centerline, up to 75' AGL/1624' MSL.

Tree 2160' from DER, 652' left of centerline, 1581' MSL.

**Rwy 35**, lighting 7' from DER, 26' left of centerline, 1' AGL/1524' MSL.

Lighting 8' from DER, 27' right of centerline, 2' AGL/1524' MSL.

Sign 15' from DER, 200' left of centerline, 3' AGL/1525' MSL.

Trees, and vegetation beginning 74' from DER, 250' right of centerline, up to 1546' MSL.

Terrain 89' from DER, 510' left of centerline, 1529' MSL.

Tree 110' from DER, 486' left of centerline, 1550' MSL.

Tree 796' from DER, 544' right of centerline, 1564' MSL.

Tree 1422' from DER, 723' right of centerline, 1586' MSL.

Tree 1574' from DER, 751' right of centerline, 1595' MSL.

Trees beginning 1743' from DER, 458' right of centerline, up to 1606' MSL.

Trees beginning 2025' from DER, 431' right of centerline, up to 1608' MSL.

Trees beginning 2216' from DER, 642' right of centerline, up to 1616' MSL.

Trees beginning 2424' from DER, 929' right of centerline, up to 1617' MSL.

Tree 2773' from DER, 979' right of centerline, 1621' MSL.

Trees beginning 2828' from DER, 4' right of centerline, up to 1635' MSL.

Tree 3499' from DER, 211' left of centerline, 1613' MSL.

Tree 3615' from DER, 248' left of centerline, 1624' MSL.

Tree 3789' from DER, 883' right of centerline, 1638' MSL.

Trees beginning 3791' from DER, 515' right of centerline, up to 1644' MSL.

CONT

22 FEB 2024 to 21 MAR 2024

22 FEB 2024 to 21 MAR 2024

# TAKEOFF MINIMUMS, (OBSTACLE) DEPARTURE PROCEDURES, AND DIVERSE VECTOR AREA (RADAR VECTORS)

24025

NC-2

# TAKEOFF MINIMUMS, (OBSTACLE) DEPARTURE PROCEDURES, AND DIVERSE VECTOR AREA (RADAR VECTORS)

24025

## HUTCHINSON, KS (CON'T)

### HUTCHINSON RGNL (HUT) (CON'T)

**Rwy 35 (CON'T)**, trees beginning 3830' from DER, 301' right of centerline, up to 1645' MSL.  
 Trees beginning 3862' from DER, 392' right of centerline, up to 1649' MSL.  
 Trees beginning 3905' from DER, 36' right of centerline, up to 1651' MSL.  
 Trees beginning 3933' from DER, 66' left of centerline, up to 1636' MSL.  
 Trees beginning 4028' from DER, 28' right of centerline, up to 1657' MSL.  
 Tree 4092' from DER, 265' left of centerline, 1651' MSL.  
 Tree 4121' from DER, 346' left of centerline, 1654' MSL.  
 Trees beginning 4165' from DER, 287' right of centerline, up to 1663' MSL.  
 Trees beginning 4225' from DER, 168' left of centerline, up to 1656' MSL.  
 Trees beginning 4261' from DER, 387' right of centerline, up to 1665' MSL.  
 Trees beginning 4609' from DER, 352' right of centerline, up to 1668' MSL.  
 Trees beginning 5235' from DER, 986' right of centerline, up to 1672' MSL.  
 Trees beginning 5393' from DER, 1480' right of centerline, up to 1676' MSL.  
 Trees beginning 5668' from DER, 1519' right of centerline, up to 1695' MSL.  
 Transmission line 1.2 NM from DER, 2295' left of centerline, 116' AGL/1726' MSL.

## IMPERIAL, NE

### IMPERIAL MUNI (IML)

#### TAKEOFF MINIMUMS AND (OBSTACLE) DEPARTURE PROCEDURES

AMDT 2A 03MAY16 (16063) (FAA)

##### TAKEOFF MINIMUMS:

**Rwys 3,21**, NA-Environmental.

##### DEPARTURE PROCEDURE:

**Rwy 31**, climb heading 315° to 3700 before turning left.

##### TAKEOFF OBSTACLE NOTES:

**Rwy 13**, fence 58' from DER, 249' left of centerline, 4' AGL/3272' MSL.

Vehicles on road and railroad beginning 251' from DER, 558' right of centerline, up to 23' AGL/3293' MSL.

**Rwy 31**, signs beginning 777' from DER, 292' left of centerline, up to 23' AGL/3298' MSL.

Light poles and power poles beginning 876' from DER, 326' left of centerline to 1476' from DER, 75' right of centerline, up to 41' AGL/3316' MSL.

## INDEPENDENCE, KS

### INDEPENDENCE MUNI (IDP)

#### TAKEOFF MINIMUMS AND (OBSTACLE) DEPARTURE PROCEDURES

ORIG 20NOV08 (08325) (FAA)

##### TAKEOFF OBSTACLE NOTES:

**Rwy 4**, trees beginning 2911' from DER, 1236' left of centerline, up to 100' AGL/929' MSL.

Tree 1878' from DER, 236' right of centerline, 52' AGL/871' MSL.

**Rwy 17**, trees beginning 1402' from DER, 696' left of centerline, up to 31' AGL/860' MSL.

**Rwy 35**, obstruction light on DME 1002' from DER, 256' right of centerline, 20' AGL/849' MSL.

Trees beginning 2515' from DER, 994' right of centerline, up to 100' AGL/929' MSL.

## IOLA, KS

### ALLEN COUNTY (K88)

#### TAKEOFF MINIMUMS AND (OBSTACLE) DEPARTURE PROCEDURES

ORIG 12MAR09 (09071) (FAA)

##### TAKEOFF OBSTACLE NOTES:

**Rwy 1**, trees 1280' from DER, 485' right of centerline, 100' AGL/1109' MSL.

**Rwy 19**, vehicle on road 28' from DER, 501' right of centerline, 15' AGL/1024' MSL.

Terrain beginning 69' from DER, 229' right of centerline, up to 1014' MSL.

Trees 2240' from DER, 1068' right of centerline, 100' AGL/1109' MSL.

Trees 2381' from DER, 621' left of centerline, 100' AGL/1089' MSL.

## JETMORE, KS

### JETMORE MUNI (K79)

#### TAKEOFF MINIMUMS AND (OBSTACLE) DEPARTURE PROCEDURES

ORIG 27APR17 (17117) (FAA)

##### TAKEOFF OBSTACLE NOTES:

**Rwy 17**, electric sys, light support structure beginning 8' from DER, 38' left of centerline, up to 3' AGL/2468' MSL. Electric sys, light support structure beginning 10' from DER, 38' right of centerline, up to 3' AGL/2468' MSL.

Trees beginning 394' from DER, 524' left of centerline, up to 2506' MSL.

**Rwy 35**, electric sys, light support structure beginning 10' from DER, 39' left of centerline, up to 2' AGL/2465' MSL. Road

beginning 103' from DER, 170' right of centerline, up to 2478' MSL.

Trees beginning 372' from DER, 294' right of centerline, up to 2508' MSL.

# TAKEOFF MINIMUMS, (OBSTACLE) DEPARTURE PROCEDURES, AND DIVERSE VECTOR AREA (RADAR VECTORS)

24025

NC-2

# TAKEOFF MINIMUMS, (OBSTACLE) DEPARTURE PROCEDURES, AND DIVERSE VECTOR AREA (RADAR VECTORS)

24025

## JOHNSON, KS

### STANTON COUNTY MUNI (JHN)

#### TAKEOFF MINIMUMS AND (OBSTACLE) DEPARTURE PROCEDURES

ORIG 18NOV10 (10322) (FAA)

#### TAKEOFF OBSTACLE NOTES:

**Rwy 17**, hangar 517' from DER, 539' right of centerline, 18' AGL/3342' MSL.

**Rwy 26**, hangar 373' from DER, 315' left of centerline, 18' AGL/3342' MSL.

Vehicle on road beginning 529' from DER, on centerline, 15' AGL/3339' MSL.

Trees beginning 704' from DER, 66' left of centerline, up to 40' AGL/3364' MSL.

## JUNCTION CITY, KS

### FREEMAN FLD (3JC)

#### TAKEOFF MINIMUMS AND (OBSTACLE) DEPARTURE PROCEDURES

AMDT 2A 10DEC15 (21336) (FAA)

#### TAKEOFF MINIMUMS:

**Rwys 5, 13, 23, 31**, NA-Environmental.

**Rwy 18**, 500-2¼ or std. w/min. climb of 420' per NM to 1700.

**Rwy 36**, 300-2 or std. w/min. climb of 234' per NM to 1500.

#### DEPARTURE PROCEDURE:

**Rwy 18**, climb heading 189° to 2200 before turning right.

**Rwy 36**, climb heading 009° to 2000 before proceeding on course.

#### TAKEOFF OBSTACLE NOTES:

**Rwy 18**, numerous towers and poles beginning 909' from DER, 389' left of centerline, up to 135' AGL/1432' MSL.

Tank 1.1 NM from DER, 1895' left of centerline, 148' AGL/1410' MSL.

Antenna 1.9 NM from DER, 478' left of centerline, 75' AGL/1426' MSL.

Numerous towers and trees beginning 28' from DER, 437' right of centerline, up to 320' AGL/1540' MSL.

**Rwy 36**, tree 540' from DER, 6' left of centerline, 100' AGL/1164' MSL.

Trees beginning 2531' from DER, 397' right of centerline, up to 100' AGL/1164' MSL.

Building 54' from DER, 435' left of centerline, 30' AGL/1165' MSL.

## KEARNEY, NE

### KEARNEY RGNL (EAR)

#### TAKEOFF MINIMUMS AND (OBSTACLE) DEPARTURE PROCEDURES

AMDT 2 15AUG19 (22027) (FAA)

#### DEPARTURE PROCEDURE:

**Rwy 13**, climb heading 136° to 3600 before turning left.

#### TAKEOFF OBSTACLE NOTES:

**Rwy 13**, fence 12' from DER, 320' left of centerline, 6' AGL/2133' MSL.

Tree 2730' from DER, 1042' left of centerline, 2200' MSL.

**Rwy 31**, terrain 11' from DER, 227' right of centerline, 2130' MSL.

**Rwy 36**, terrain 14' from DER, 494' left of centerline, 2129' MSL.

Lighting 39' from DER, 147' right of centerline, 5' AGL/2132' MSL.

Lighting 40' from DER, 150' left of centerline, 4' AGL/2131' MSL.

## KIMBALL, NE

### KIMBALL MUNI/ROBERT E ARRAJ FLD (IBM)

#### TAKEOFF MINIMUMS AND (OBSTACLE) DEPARTURE PROCEDURES

ORIG 18JAN07 (22083) (FAA)

#### TAKEOFF OBSTACLE NOTES:

**Rwy 10**, fence 218' from DER, 273' right of centerline, 4' AGL/4905' MSL.

Wind cone 256' from DER, 222' left of centerline, 14' AGL/4914' MSL.

Multiple stop signs beginning 830' from DER, 555' left of centerline, up to 17' AGL/4926' MSL.

**Rwy 28**, terrain beginning 75' from DER, 262' right of centerline, up to 4939' MSL.

Terrain beginning 141' from DER, 435' left of centerline, up to 4932' MSL.

22 FEB 2024 to 21 MAR 2024

22 FEB 2024 to 21 MAR 2024

# TAKEOFF MINIMUMS, (OBSTACLE) DEPARTURE PROCEDURES, AND DIVERSE VECTOR AREA (RADAR VECTORS)

24025

NC-2

# TAKEOFF MINIMUMS, (OBSTACLE) DEPARTURE PROCEDURES, AND DIVERSE VECTOR AREA (RADAR VECTORS)

24025

## KINGMAN, KS

### KINGMAN/CLYDE CESSNA FLD (9K8)

#### TAKEOFF MINIMUMS AND (OBSTACLE) DEPARTURE PROCEDURES

ORIG-B 21MAY20 (21224) (FAA)

#### TAKEOFF OBSTACLE NOTES:

- Rwy 11**, trees beginning 13' from DER, 136' left of centerline, up to 1616' MSL.  
 Tree 55' from DER, 193' right of centerline, 15' AGL/1602' MSL.  
 Tree 71' from DER, 503' left of centerline, 1623' MSL.  
 Trees, vegetation beginning 78' from DER, 243' left of centerline, up to 1628' MSL.  
 Tree 127' from DER, 521' right of centerline, 35' AGL/1624' MSL.  
 Trees beginning 157' from DER, 363' right of centerline, up to 47' AGL/1633' MSL.  
 Trees beginning 273' from DER, 7' right of centerline, up to 1652' MSL.  
 Trees beginning 279' from DER, 104' left of centerline, up to 1632' MSL.  
 Trees beginning 385' from DER, 25' left of centerline, up to 51' AGL/1636' MSL.  
 Trees beginning 443' from DER, 7' left of centerline, up to 54' AGL/1645' MSL.  
 Trees, pole, catenary beginning 531' from DER, 5' right of centerline, up to 90' AGL/1675' MSL.  
 Trees, pole, catenary beginning 603' from DER, 3' left of centerline, up to 64' AGL/1647' MSL.  
 Trees, poles beginning 1015' from DER, 587' left of centerline, up to 1650' MSL.  
 Tree 1206' from DER, 329' right of centerline, 1679' MSL.  
 Trees beginning 1206' from DER, 237' right of centerline, up to 96' AGL/1680' MSL.  
 Trees, poles beginning 1304' from DER, 701' left of centerline, up to 1657' MSL.  
 Trees beginning 1308' from DER, 297' right of centerline, up to 1681' MSL.  
 Trees, pole beginning 1483' from DER, 302' right of centerline, up to 98' AGL/1683' MSL.  
 Tower, trees beginning 2038' from DER, 25' right of centerline, up to 117' AGL/1700' MSL.  
 Tree 2587' from DER, 921' left of centerline, 1660' MSL.
- Rwy 18**, poles, general utility, lighting, traverse way, buildings beginning 26' from DER, 72' left of centerline, up to 1624' MSL.  
 Lighting 37' from DER, 74' right of centerline, 1599' MSL.  
 Tree 451' from DER, 555' right of centerline, 1624' MSL.  
 Pole 469' from DER, 494' left of centerline, 39' AGL/1626' MSL.  
 Trees beginning 485' from DER, 500' left of centerline, up to 1639' MSL.  
 Trees beginning 631' from DER, 666' left of centerline, up to 1645' MSL.  
 Trees beginning 685' from DER, 17' right of centerline, up to 85' AGL/1661' MSL.  
 Tree 1076' from DER, 596' left of centerline, 1648' MSL.  
 Trees beginning 1131' from DER, 16' left of centerline, up to 80' AGL/1658' MSL.
- Rwy 29**, tree 166' from DER, 400' right of centerline, 12' AGL/1614' MSL.  
 Poles beginning 881' from DER, 608' right of centerline, up to 1635' MSL.  
 Trees beginning 1047' from DER, 86' left of centerline, up to 1647' MSL.  
 Tree 1383' from DER, 25' right of centerline, 35' AGL/1642' MSL.
- Rwy 36**, lighting, terrain beginning 36' from DER, 72' left of centerline, up to 1602' MSL.  
 Lighting 37' from DER, 74' right of centerline, 1600' MSL.  
 Tree 100' from DER, 501' right of centerline, 10' AGL/1602' MSL.  
 Tree 123' from DER, 496' right of centerline, 1604' MSL.  
 Trees beginning 308' from DER, 385' left of centerline, up to 1612' MSL.  
 Traverse way beginning 486' from DER, 56' left of centerline, up to 1618' MSL.  
 Traverse way beginning 560' from DER, 12' right of centerline, up to 1613' MSL.

## LARNED, KS

### LARNED-PAWNEE COUNTY (LQR)

#### TAKEOFF MINIMUMS AND (OBSTACLE) DEPARTURE PROCEDURES

AMDT 3 13JAN11 (11013) (FAA)

#### TAKEOFF MINIMUMS:

**Rwys 4, 12, 22, 30**, NA- Environmental.

#### TAKEOFF OBSTACLE NOTES:

- Rwy 17**, runway light 9' from DER, 50' left of centerline, 1' AGL/2009' MSL.  
 Light 100' from DER, 486' right of centerline, 37' AGL/2047' MSL.  
 Tank 117' from DER, 313' right of centerline, 17' AGL/2027' MSL.  
 Vehicles on road 493' from DER, crossing right to left, 15' AGL/2029' MSL.  
 Trees 536' from DER, 54' AGL/2068' MSL.
- Rwy 35**, runway light 10' from DER, 13' right of centerline, 2' AGL/2008' MSL.  
 Vehicles on road 548' from DER, crossing right to left, 15' AGL/2021' MSL.  
 Power poles 573' from DER, 614' left of centerline, 38' AGL/2031' MSL.  
 Power poles beginning 577' from DER, 364' right of centerline, up to 38' AGL/2039' MSL.  
 Trees beginning 597' from DER, 204' right of centerline. Up to 54' AGL/2050' MSL.

# TAKEOFF MINIMUMS, (OBSTACLE) DEPARTURE PROCEDURES, AND DIVERSE VECTOR AREA (RADAR VECTORS)

24025

NC-2

22 FEB 2024 to 21 MAR 2024

22 FEB 2024 to 21 MAR 2024

# TAKEOFF MINIMUMS, (OBSTACLE) DEPARTURE PROCEDURES, AND DIVERSE VECTOR AREA (RADAR VECTORS)

24025

## LAWRENCE, KS

### LAWRENCE RGNL (LWC)

#### TAKEOFF MINIMUMS AND (OBSTACLE) DEPARTURE PROCEDURES

AMDT 4 04SEP03 (21224) (FAA)

##### TAKEOFF MINIMUMS:

**Rwy 1**, 400-1½ or std. w/min. climb of 387' per NM to 1300.

**Rwy 33**, 300-1 or std. w/min. climb of 327' per NM to 1100.

##### DEPARTURE PROCEDURE:

**Rwy 15**, south and west departures (140° CW 360°), climb via heading 130° to 2400 before turning right on course. **Rwy 19**, climb via heading 180° to 2400 before turning on course.

##### TAKEOFF OBSTACLE NOTES:

**Rwy 1**, bush 297' from DER, 192' right of centerline, 9' AGL/842' MSL.

Tree 2864' from DER, 759' right of centerline, 90' AGL/969' MSL.

Tree 4151' from DER, 1466' left of centerline, 79' AGL/958' MSL.

Tree 7024' from DER, 2180' right of centerline, 45' AGL/1104' MSL.

Tree 7285' from DER, 1781' right of centerline, 100' AGL/1179' MSL.

Tree 7406' from DER, 349' right of centerline, 49' AGL/1088' MSL.

Tree 7980' from DER, 2613' right of centerline, 46' AGL/1105' MSL.

Tree 10,211' from DER, 2539' left of centerline, 49' AGL/1108' MSL.

Tree 11,544' from DER, 1866' left of centerline, 70' AGL/1129' MSL.

**Rwy 15**, tree 543' from DER, 561' left of centerline, 28' AGL/857' MSL.

Tree 1361' from DER, 714' right of centerline, 50' AGL/879' MSL.

**Rwy 19**, tree 1797' from DER, 558' right of centerline, 79' AGL/918' MSL.

Tree 1896' from DER, 317' right of centerline, 71' AGL/910' MSL.

**Rwy 33**, tree 1323' from DER, 623' right of centerline, 59' AGL/898' MSL.

Tree 1622' from DER, 353' right of centerline, 48' AGL/887' MSL.

Tree 1768' from DER, 201' right of centerline, 49' AGL/888' MSL.

Tree 1945' from DER, 17' left of centerline, 66' AGL/905' MSL.

Tree 4357' from DER, 1563' right of centerline, 100' AGL/1009' MSL.

## LEOTI, KS

### MARK HOARD MEML (3K7)

#### TAKEOFF MINIMUMS AND (OBSTACLE) DEPARTURE PROCEDURES

ORIG 02DEC21 (21336) (FAA)

##### DEPARTURE PROCEDURE:

**Rwy 35**, climb on heading 355° to 3800 before proceeding on course..

##### TAKEOFF OBSTACLE NOTES:

**Rwy 35**, vehicles on road beginning 175' from DER, 539' right of centerline, up to 3314' MSL.

Pole 844' from DER, 681' right of centerline, 31' AGL/3330' MSL.

Power lines beginning 902' from DER, 683' right of centerline, up to 33' AGL/3332' MSL.

Power lines beginning 904' from DER, 597' left of centerline, up to 32' AGL/3335' MSL.

## LEXINGTON, NE

### JIM KELLY FLD (LXN)

#### TAKEOFF MINIMUMS AND (OBSTACLE) DEPARTURE PROCEDURES

AMDT 2A 20JUN19 (21336) (FAA)

##### TAKEOFF MINIMUMS:

**Rwys 1, 19**, NA-Environmental.

##### DEPARTURE PROCEDURE:

**Rwy 14**, climb heading 136° to 3500 before turning right.

##### TAKEOFF OBSTACLE NOTES:

**Rwy 14**, tree 865' from DER, 593' left of centerline, 28' AGL/2429' MSL.

Electrical systems, vehicles on road beginning 896' from DER, 406' right of centerline, up to 24' AGL/2428' MSL.

Trees, pole beginning 1067' from DER, 426' left of centerline, up to 50' AGL/2450' MSL.

Trees beginning 1140' from DER, 242' left of centerline, up to 59' AGL/2459' MSL.

Tree 1996' from DER, 471' right of centerline, 55' AGL/2457' MSL.

**Rwy 32**, fence 72' from DER, 498' left of centerline, 10' AGL/2415' MSL.

Fence 97' from DER, 497' right of centerline, 3' AGL/2418' MSL.

## LIBERAL, KS

### LIBERAL MID-AMERICA RGNL (LBL)

#### TAKEOFF MINIMUMS AND (OBSTACLE) DEPARTURE PROCEDURES

AMDT 6 08JAN15 (15008) (FAA)

##### TAKEOFF OBSTACLE NOTES:

**Rwy 4**, trees beginning 1021' from DER, 619' right of centerline, up to 67' AGL/2937' MSL.

Wind sock 345' from DER, 380' left of centerline, 22' AGL/2896' MSL.

Pole 390' from DER, 350' left of centerline, 22' AGL/2896' MSL.

**Rwy 17**, REILs 10' from DER, 29 to 30' left and right of centerline, 2' AGL/2877' MSL.

**Rwy 22**, REILs 39 to 40' from DER, 113 to 117' right and left of centerline, 2' AGL/up to 2887' MSL.

**Rwy 35**, trees beginning 1324' from DER, 554' right of centerline, up to 49' AGL/2925' MSL.

Lights 10' from DER, 30' left and 31' right of centerline, 2' AGL/2881' MSL.

# TAKEOFF MINIMUMS, (OBSTACLE) DEPARTURE PROCEDURES, AND DIVERSE VECTOR AREA (RADAR VECTORS)

24025

NC-2

# TAKEOFF MINIMUMS, (OBSTACLE) DEPARTURE PROCEDURES, AND DIVERSE VECTOR AREA (RADAR VECTORS)

24025

## LINCOLN, NE

### LINCOLN (LNK)

TAKEOFF MINIMUMS AND (OBSTACLE) DEPARTURE PROCEDURES

ORIG-A 01JUL10 (10182) (FAA)

TAKEOFF OBSTACLE NOTES:

**Rwy 14**, windsock 262' from DER, 369' left of centerline, 7' AGL/1187' MSL.**Rwy 17**, light poles beginning 520' from DER, 505' right of centerline, up to 36' AGL/1198' MSL.**Rwy 18**, rod on obstruction light tower 3858' from DER, 687' left of centerline, 80' AGL/1280' MSL.**Rwy 35**, warehouse 4463' from DER, 1350' left of centerline, 50' AGL/1369' MSL.

## LOUP CITY, NE

### LOUP CITY MUNI (0F4)

TAKEOFF MINIMUMS AND (OBSTACLE) DEPARTURE PROCEDURES

ORIG 15OCT15 (15288) (FAA)

TAKEOFF MINIMUMS:

**Rwys 4, 22**, NA-Environmental.

TAKEOFF OBSTACLE NOTES:

**Rwy 16**, vehicles on road beginning 18' from DER, 357' left of centerline, up to 15' AGL/2084' MSL.

Vehicle on road, transmission tower, and pole beginning 555' from DER, 440' right of centerline, up to 37' AGL/2102' MSL.

Trees, transmission tower, and pole beginning 634' from DER, 397' left of centerline, up to 57' AGL/2128' MSL.

Trees beginning 1394' from DER, 173' left of centerline, up to 66' AGL/2137' MSL.

Trees beginning 1803' from DER, 787' right of centerline, up to 79' AGL/2150' MSL.

**Rwy 34**, trees beginning 34' from DER, 377' left of centerline, up to 17' AGL/2088' MSL.

Trees beginning 440' from DER, 276' right of centerline, up to 22' AGL/2093' MSL.

Trees beginning 759' from DER, 450' left of centerline, up to 75' AGL/2144' MSL.

Tree 1821' from DER, 708' left of centerline, 53' AGL/2123' MSL.

## LYONS, KS

### LYONS-RICE COUNTY MUNI (LYO)

TAKEOFF MINIMUMS AND (OBSTACLE) DEPARTURE PROCEDURES

ORIG-A 08NOV18 (18312) (FAA)

TAKEOFF OBSTACLE NOTES:

**Rwy 17**, trees beginning 262' from DER, 261' left of centerline, up to 1718' MSL.

Tree 1115' from DER, 493' right of centerline, 1712' MSL.

Trees beginning 1293' from DER, 366' right of centerline, up to 1726' MSL.

Trees beginning 1518' from DER, 683' right of centerline, up to 1727' MSL.

**Rwy 35**, building 82' from DER, 469' right of centerline, 28' AGL/1722' MSL.

Tree 87' from DER, 398' left of centerline, 1717' MSL.

Pole 475' from DER, 499' right of centerline, 40' AGL/1732' MSL.

Pole 623' from DER, 219' left of centerline, 47' AGL/1740' MSL.

Poles beginning 623' from DER, 235' left of centerline, up to 50' AGL/1744' MSL.

Pole 1896' from DER, 204' right of centerline, 44' AGL/1741' MSL.

Poles and tree beginning 1897' from DER, 14' left of centerline, up to 49' AGL/1746' MSL.

22 FEB 2024 to 21 MAR 2024

22 FEB 2024 to 21 MAR 2024

## MANHATTAN, KS

### MANHATTAN RGNL (MHK)

TAKEOFF MINIMUMS AND (OBSTACLE) DEPARTURE PROCEDURES

AMDT 8 10AUG23 (23278) (FAA)

TAKEOFF MINIMUMS:

**Rwy 3**, 400-2¼ or std w/min climb of 289'/NM to 1500.**Rwy 13**, 300-1¼ or std w/min climb of 219'/NM to 1300.**Rwy 31**, 300-2 or std w/min climb of 298'/NM to 1500, or 1000-3 for VCOA.

DEPARTURE PROCEDURE:

**All runways**, westbound departures heading 210° through 360° NA.**Rwy 3**, climb on heading 036° to 1700 before turning right.**Rwy 31**, departure NA when R-3602B active.

NOTE: R-3602B restricted area immediately west of airport.

VCOA:

**Rwy 31**, obtain ATC approval for VCOA when requesting IFR clearance. Climb in visual conditions to cross Manhattan Rgnl airport at or above 1800 before proceeding on course.

TAKEOFF OBSTACLE NOTES:

**Rwy 3**, tree 885' from DER, 122' right of centerline, 29' AGL/1069' MSL.

Tree 887' from DER, 53' right of centerline, 26' AGL/1071' MSL.

Trees beginning 888' from DER, 20' right of centerline, up to 32' AGL/1076' MSL.

Tree 905' from DER, 99' right of centerline, 40' AGL/1080' MSL.

Trees beginning 916' from DER, 41' right of centerline, up to 42' AGL/1082' MSL.

Tree 920' from DER, 37' left of centerline, 28' AGL/1071' MSL.

Trees beginning 921' from DER, 6' right of centerline, up to 44' AGL/1084' MSL.

Tree 936' from DER, 114' left of centerline, 33' AGL/1075' MSL.

Trees beginning 937' from DER, 7' left of centerline, up to 36' AGL/1078' MSL.

Trees beginning 953' from DER, 200' left of centerline, up to 34' AGL/1079' MSL.

Trees beginning 958' from DER, 27' left of centerline, up to 46' AGL/1086' MSL.

CON'T

# TAKEOFF MINIMUMS, (OBSTACLE) DEPARTURE PROCEDURES, AND DIVERSE VECTOR AREA (RADAR VECTORS)

24025

NC-2



# TAKEOFF MINIMUMS, (OBSTACLE) DEPARTURE PROCEDURES, AND DIVERSE VECTOR AREA (RADAR VECTORS)

24025

## MANHATTAN, KS (CON'T)

### MANHATTAN RGNL (MHK) (CON'T)

**Rwy 3 (CON'T)**, trees beginning 1561' from DER, 230' right of centerline, up to 55' AGL/1095' MSL.

Trees beginning 1666' from DER, 83' right of centerline, up to 67' AGL/1108' MSL.

Trees beginning 1807' from DER, 17' right of centerline, up to 73' AGL/1114' MSL.

Trees beginning 1820' from DER, 710' left of centerline, up to 1109' MSL.

Trees beginning 1922' from DER, 45' right of centerline, up to 77' AGL/1118' MSL.

Tree 2418' from DER, 764' right of centerline, 77' AGL/1119' MSL.

Trees, terrain beginning 1.1 NM from DER, 1573' left of centerline, up to 23' AGL/1235' MSL.

Trees, building beginning 1.2 NM from DER, 1183' left of centerline, up to 37' AGL/1305' MSL.

Trees beginning 1.6 NM from DER, 2230' left of centerline, up to 45' AGL/1319' MSL.

Tank 2.1 NM from DER, 3846' right of centerline, 191' AGL/1421' MSL.

**Rwy 13**, pole, building, electrical system beginning 32' from DER, 439' left of centerline, up to 43' AGL/1086' MSL.

Vehicle on roadway 904' from DER, 614' right of centerline, 1068' MSL.

Tree 1303' from DER, 794' left of centerline, 1134' MSL.

Trees beginning 1606' from DER, 582' left of centerline, up to 1138' MSL.

Tree 2685' from DER, 1028' right of centerline, 1114' MSL.

Tree 5517' from DER, 1396' left of centerline, 1186' MSL.

Terrain 1 NM from DER, 238' left of centerline, 1207' MSL.

Tree 1.1 NM from DER, 709' left of centerline, 1229' MSL.

Tree 1.1 NM from DER, 186' right of centerline, 1221' MSL.

Tower 1.4 NM from DER, 2267' right of centerline, 59' AGL/1261' MSL.

**Rwy 21**, terrain 394' from DER, 594' right of centerline, 1068' MSL.

Terrain 1892' from DER, 989' right of centerline, 1108' MSL.

Tree 2354' from DER, 725' left of centerline, 1126' MSL.

Trees beginning 3137' from DER, 737' right of centerline, up to 1169' MSL.

Trees beginning 3641' from DER, 757' right of centerline, up to 1171' MSL.

Tree 3700' from DER, 1344' right of centerline, 1174' MSL.

Trees beginning 3746' from DER, 349' right of centerline, up to 1176' MSL.

Tree, pole beginning 3857' from DER, 463' right of centerline, up to 1188' MSL.

Trees beginning 4081' from DER, 732' right of centerline, up to 1192' MSL.

Trees beginning 4406' from DER, 1030' right of centerline, up to 1193' MSL.

Tree, pole beginning 4773' from DER, 1008' right of centerline, up to 1194' MSL.

**Rwy 31**, tree 164' from DER, 456' left of centerline, 1081' MSL.

Tree 523' from DER, 361' right of centerline, 1125' MSL.

Tree, pole beginning 567' from DER, 362' right of centerline, up to 1126' MSL.

Trees beginning 2309' from DER, 587' left of centerline, up to 1150' MSL.

Trees beginning 1.1 NM from DER, 139' right of centerline, up to 14' AGL/1331' MSL.

Tree, terrain beginning 1.2 NM from DER, 452' right of centerline, up to 30' AGL/1340' MSL.

Trees beginning 1.5 NM from DER, 1288' right of centerline, up to 1358' MSL.

## MARSHALL AAF (KFRI)

### FORT RILEY, KS

#### TAKEOFF MINIMUMS AND (OBSTACLE) DEPARTURE PROCEDURES

AMDT 2 07SEP23 (23250) (USA)

##### TAKEOFF MINIMUMS:

**Rwy 4**, std w/min climb of 406'/NM to 1500.

**Rwy 22**, 400-3 or std w/ min climb of 340'/NM to 1600.

##### DEPARTURE PROCEDURE:

**Rwy 22**, climb on hdg 224° to 2200 before proceeding on course.

##### TAKEOFF OBSTACLE NOTES:

**Rwy 4**, trees 5627' from DER, 207' left of centerline, 1211' MSL.

Terrain 3910' from DER, 1253' right of centerline, 1207' MSL.

Terrain 2979' from DER, 1298' right of centerline, 1176' MSL.

Trees 3418' from DER, 421' right of centerline, 1175' MSL.

Trees 2231' from DER, 143' right of centerline, 1141' MSL.

**Rwy 22**, light pole 1457' from DER, 766' left of centerline, 1117' MSL.

Utility rack 261' from DER, 468' right of centerline, 1074' MSL.

## MARYSVILLE, KS

### MARYSVILLE MUNI (MYZ)

#### TAKEOFF MINIMUMS AND (OBSTACLE) DEPARTURE PROCEDURES

AMDT 1 05MAY11 (11125) (FAA)

##### TAKEOFF MINIMUMS:

**Rwy 34**, 500-1.

##### TAKEOFF OBSTACLE NOTES:

**Rwy 16**, trees beginning 68' from DER, 480' left of centerline, up to 28' AGL/1287' MSL.

Pole 200' from DER, 501' left of centerline, 30' AGL/1285' MSL.

Trees beginning 506' from DER, 540' left of centerline, up to 88' AGL/1327' MSL.

Trees beginning 1306' from DER, 761' right of centerline, up to 100' AGL/1359' MSL.

Trees beginning 4610' from DER, 1170' left of centerline, up to 100' AGL/1409' MSL.

**Rwy 34**, trees 1539' from DER, 902' left of centerline, 69' AGL/1327' MSL.

Tower 4940' from DER, 1289' right of centerline, 499' AGL/1759' MSL.

# TAKEOFF MINIMUMS, (OBSTACLE) DEPARTURE PROCEDURES, AND DIVERSE VECTOR AREA (RADAR VECTORS)

24025

NC-2

22 FEB 2024 to 21 MAR 2024

22 FEB 2024 to 21 MAR 2024

# TAKEOFF MINIMUMS, (OBSTACLE) DEPARTURE PROCEDURES, AND DIVERSE VECTOR AREA (RADAR VECTORS)

24025

## MC CONNELL AFB (KIAB)

WICHITA, KS

TAKEOFF MINIMUMS AND (OBSTACLE) DEPARTURE PROCEDURES  
17AUG17 (17229)

TAKEOFF OBSTACLE NOTES:

**Rwy 1L**, acft tail, 53' AGL/1421' MSL, 56' from DER, 485' left of cntrln.

Acft tail, 53' AGL/1420' MSL, 641' from DER, 471' left of cntrln.

**Rwy 1R**, acft tail, 53' AGL/1419' MSL, 705' from DER, 702' right of cntrln.

Acft tail, 53' AGL/1421' MSL, 885' from DER, 702' right of cntrln.

Acft tail, 53' AGL/1422' MSL, 1066' from DER, 702' right of cntrln.

**Rwy 19L**, pylon 89' AGL/1439' MSL, 5201' from DER, 1739' left of cntrln.

Pylon, 89' AGL/1444' MSL, 5286' from DER, 1437' left of cntrln.

Pylon, 89' AGL/1442' MSL, 5356' from DER, 1120' left of cntrln.

**Rwy 19R**, pylon, 89' AGL/1405' MSL, 3451' from DER, 1224' right of cntrln.

Pylon, 89' AGL/1404' MSL, 3788' from DER, 1147' right of cntrln.

Pylon, 89' AGL/1442' MSL, 5358' from DER, 1947' left of cntrln.

## MC COOK, NE

MC COOK BEN NELSON RGNL (MCK)

TAKEOFF MINIMUMS AND (OBSTACLE) DEPARTURE PROCEDURES

ORIG 17DEC09 (09351) (FAA)

TAKEOFF MINIMUMS:

**Rwys 17, 35**, NA-Environmental.

TAKEOFF OBSTACLE NOTES:

**Rwy 4**, tree 275' from DER, 233' left of centerline, 27' AGL/2566' MSL.**Rwy 12**, multiple trees beginning 71' from DER, 147' right of centerline, up to 40' AGL/2559' MSL.

Tree 240' from DER, 142' left of centerline, 40' AGL/2549' MSL.

**Rwy 22**, pole 843' from DER, 95' right of centerline, 28' AGL/2587' MSL.

## MC PHERSON, KS

MC PHERSON (MPR)

TAKEOFF MINIMUMS AND (OBSTACLE) DEPARTURE PROCEDURES

AMDT 2A 11AUG22 (22223) (FAA)

TAKEOFF MINIMUMS:

**Rwys 8, 26**, NA-Environmental.

TAKEOFF OBSTACLE NOTES:

**Rwy 36**, vegetation 31' from DER, 262' left of centerline, 8' AGL/1495' MSL.

Tower, 5215' from DER, 1128' right of centerline, 140' AGL/1628' MSL.

## MEADE, KS

MEADE MUNI (MEJ)

TAKEOFF MINIMUMS AND (OBSTACLE) DEPARTURE PROCEDURES

ORIG 13JAN11 (11013) (FAA)

TAKEOFF MINIMUMS:

**Rwys 8, 26**, NA-Environmental.

TAKEOFF OBSTACLE NOTES:

**Rwy 17**, vehicles on roadway at DER, 290' right of centerline, up to 15' AGL/2524' MSL.

Trees beginning 768' from DER, left and right of centerline, up to 45' AGL/2554' MSL.

**Rwy 35**, hanger 446' from DER, 612' left of centerline, up to 20' AGL/2549' MSL.

Vehicles on roadway 641' from DER, left and right of centerline, up to 17' AGL/2546' MSL.

Trees beginning 2129' from DER, 530' right of centerline, up to 45' AGL/2574' MSL.

## MINDEN, NE

PIONEER VILLAGE FLD (0V3)

TAKEOFF MINIMUMS AND (OBSTACLE) DEPARTURE PROCEDURES

AMDT 2 23SEP10 (21280) (FAA)

TAKEOFF MINIMUMS:

**Rwys 5, 23**, NA-Turf.

DEPARTURE PROCEDURE:

**Rwy 34**, climb heading 339° to 3000 before turning right.

TAKEOFF OBSTACLE NOTES:

**Rwy 16**, trees, guard posts, and street lights beginning 32' from DER, 156' right of centerline, up to 75' AGL/2223' MSL.

Trees beginning 193' from DER, 167' left of centerline, up to 67' AGL/2204' MSL.

Buildings beginning 1656' from DER, 156' right of centerline, up to 70' AGL/2225' MSL.

Power poles beginning 528' from DER, 393' right of centerline, up to 37' AGL/2191' MSL.

**Rwy 34**, trees beginning 192' from DER, 156' left of centerline, up to 100' AGL/2269' MSL.

# TAKEOFF MINIMUMS, (OBSTACLE) DEPARTURE PROCEDURES, AND DIVERSE VECTOR AREA (RADAR VECTORS)

24025

NC-2

22 FEB 2024 to 21 MAR 2024

22 FEB 2024 to 21 MAR 2024

# TAKEOFF MINIMUMS, (OBSTACLE) DEPARTURE PROCEDURES, AND DIVERSE VECTOR AREA (RADAR VECTORS)

24025

## MOUNDRIDGE, KS

MOUNDRIDGE MUNI (47K)

TAKEOFF MINIMUMS AND (OBSTACLE) DEPARTURE PROCEDURES

ORIG 15DEC11 (11349) (FAA)

TAKEOFF OBSTACLE NOTES:

**Rwy 17**, buildings 224' from DER, 125' right and 280' left of centerline, up to 25' AGL/1519' MSL.

Vehicles on roadway across centerline 508' from DER, up to 15' AGL/1504' MSL.

Power poles beginning 744' from DER, 638' left of centerline, up to 35' AGL/1524' MSL.

Trees beginning 1123' from DER, 693' right of centerline, up to 100' AGL/1589' MSL.

**Rwy 35**, trees beginning 4035' from DER, 401' right of centerline, up to 100' AGL/1599' MSL.

## NEBRASKA CITY, NE

NEBRASKA CITY MUNI (AFK)

TAKEOFF MINIMUMS AND (OBSTACLE) DEPARTURE PROCEDURES

ORIG 05JUN08 (08157) (FAA)

TAKEOFF MINIMUMS:

**Rwys 5, 23**, NA - Environmental.

## NELIGH, NE

ANTELOPE COUNTY (4V9)

TAKEOFF MINIMUMS AND (OBSTACLE) DEPARTURE PROCEDURES

AMDT 1 08NOV18 (18312) (FAA)

TAKEOFF MINIMUMS:

**Rwy 1**, 300-13% w/min. climb of 305' per NM to 2600 or std. w/min. climb of 375' per NM to 2400 or 1100-3 for VCOA.

DEPARTURE PROCEDURE:

**Rwy 19**, climb heading 188° to 2500 before turning left.

**Rwy 31**, climb heading 310° to 2300 before turning right.

VCOA:

**Rwy 1**, obtain ATC approval for VCOA when requesting IFR clearance: climb in visual conditions to cross Antelope County Airport at or above 2700 before proceeding on course.

TAKEOFF OBSTACLE NOTES:

**Rwy 1**, tree 283' from DER, 401' right of centerline, 25' AGL/1750' MSL.

Transmission line and trees beginning 1242' from DER, 2' left of centerline, up to 77' AGL/1804' MSL.

Tree 1731' from DER, 656' right of centerline, 50' AGL/1778' MSL.

Tree and building beginning 1744' from DER, 12' right of centerline, up to 54' AGL/1780' MSL.

Trees beginning 1748' from DER, 447' right of centerline, up to 74' AGL/1797' MSL.

Tree 1761' from DER, 559' right of centerline, 81' AGL/1800' MSL.

Tree 1763' from DER, 610' right of centerline, 84' AGL/1805' MSL.

Trees beginning 1785' from DER, 160' right of centerline, up to 80' AGL/1807' MSL.

Trees beginning 1910' from DER, 272' left of centerline, up to 84' AGL/1811' MSL.

Trees beginning 1928' from DER, 325' left of centerline, up to 84' AGL/1812' MSL.

Trees beginning 1968' from DER, 195' left of centerline, up to 86' AGL/1814' MSL.

Trees beginning 2007' from DER, 6' right of centerline, up to 89' AGL/1810' MSL.

Tower 1.2 NM from DER, 194' left of centerline, 120' AGL/1944' MSL.

Towers beginning 1.4 NM from DER, 245' left of centerline, up to 121' AGL/2055' MSL.

Towers beginning 1.4 NM from DER, 428' left of centerline, up to 137' AGL/2065' MSL.

Towers and buildings beginning 1.4 NM from DER, 432' left of centerline, up to 119' AGL/2070' MSL.

Tower 1.4 NM from DER, 555' left of centerline, 119' AGL/2065' MSL.

**Rwy 13**, trees beginning 71' from DER, 103' right of centerline, up to 90' AGL/1819' MSL.

Vehicles on road 284' from DER, on centerline, 15' AGL/1744' MSL.

Transmission lines beginning 708' from DER, 645' left of centerline, up to 47' AGL/1766' MSL.

Transmission lines beginning 855' from DER, 80' left of centerline, up to 47' AGL/1771' MSL.

Trees beginning 1322' from DER, 194' left of centerline, up to 90' AGL/1819' MSL.

Trees beginning 1129' from DER, 644' right of centerline, up to 90' AGL/1829' MSL.

Transmission lines beginning 1454' from DER, 103' right of centerline, up to 47' AGL/1775' MSL.

**Rwy 19**, terrain 76' from DER, 333' right of centerline, 1783' MSL.

Terrain and fences beginning 80' from DER, 341' right of centerline, up to 1785' MSL.

**Rwy 31**, buildings and trees beginning 138' from DER, 324' right of centerline, up to 90' AGL/1829' MSL.

Vehicles on road beginning 138' from DER, 43' left of centerline, up to 15' AGL/1754' MSL.

Trees beginning 568' from DER, 331' left of centerline, 90' AGL/1839' MSL.

Trees beginning 875' from DER, 118' right of centerline, up to 90' AGL/1839' MSL.

22 FEB 2024 to 21 MAR 2024

22 FEB 2024 to 21 MAR 2024

# TAKEOFF MINIMUMS, (OBSTACLE) DEPARTURE PROCEDURES, AND DIVERSE VECTOR AREA (RADAR VECTORS)

24025

NC-2

# TAKEOFF MINIMUMS, (OBSTACLE) DEPARTURE PROCEDURES, AND DIVERSE VECTOR AREA (RADAR VECTORS)

24025

## NEODESHA, KS

### NEODESHA MUNI (2K7)

#### TAKEOFF MINIMUMS AND (OBSTACLE) DEPARTURE PROCEDURES

ORIG-A 07OCT21 (21280) (FAA)

#### TAKEOFF MINIMUMS:

**Rwy 15, 33**, NA-Environmental.

#### TAKEOFF OBSTACLE NOTES:

**Rwy 2**, trees beginning 87' from DER, 1' right of centerline, up to 60' AGL/907' MSL.

Trees beginning 120' from DER, 210' left of centerline, up to 60' AGL/904' MSL.

Trees beginning 619' from DER, 10' left of centerline, up to 60' AGL/910' MSL.

Trees beginning 735' from DER, 55' right of centerline, up to 60' AGL/910' MSL.

Trees beginning 2115' from DER, 122' right of centerline, up to 60' AGL/914' MSL.

Trees beginning 2231' from DER, 188' right of centerline, up to 60' AGL/917' MSL.

Trees beginning 2298' from DER, 23' left of centerline, up to 60' AGL/914' MSL.

Trees beginning 2831' from DER, 314' left of centerline, up to 60' AGL/917' MSL.

Tree 3097' from DER, 672' left of centerline, 60' AGL/920' MSL.

**Rwy 20**, trees beginning 7' from DER, 52' left of centerline, up to 60' AGL/881' MSL.

Trees beginning 123' from DER, 14' right of centerline, up to 60' AGL/884' MSL.

Trees beginning 1237' from DER, 80' right of centerline, up to 60' AGL/891' MSL.

Transmission line 1402' from DER, 213' right of centerline, 60' AGL/890' MSL.

Trees beginning 1686' from DER, 65' left of centerline, up to 60' AGL/884' MSL.

Trees beginning 2001' from DER, 1' right of centerline, up to 60' AGL/897' MSL.

Trees beginning 2384' from DER, 67' right of centerline, up to 60' AGL/907' MSL.

## NESS CITY, KS

### NESS CITY (48K)

#### TAKEOFF MINIMUMS AND (OBSTACLE) DEPARTURE PROCEDURES

ORIG 20APR23 (23110) (FAA)

#### TAKEOFF OBSTACLE NOTES:

**Rwy 17**, antenna 802' from DER, 210' left of centerline, 29' AGL/2309' MSL.

## NEWTON, KS

### NEWTON-CITY-COUNTY (EWK)

#### TAKEOFF MINIMUMS AND (OBSTACLE) DEPARTURE PROCEDURES

ORIG 17NOV11 (11321) (FAA)

#### TAKEOFF OBSTACLE NOTES:

**Rwy 8**, silo 503' from DER, 552' right of centerline, 61' AGL/1591' MSL.

Elevator 535' from DER, 523' right of centerline, 61' AGL/1591' MSL.

Pole 837' from DER, 364' left of centerline, 42' AGL/1568' MSL.

Pole 844' from DER, 209' right of centerline, 42' AGL/1568' MSL.

**Rwy 26**, pole 737' from DER, 229' right of centerline, 37' AGL/1560' MSL.

Pole 723' from DER, 407' left of centerline, 27' AGL/1553' MSL.

**Rwy 35**, tree 586' from DER, 577' left of centerline, 22' AGL/1545' MSL.

Sign at DER, 410' right of centerline, 5' AGL/1533' MSL.

Rising terrain, 40' from DER, 399' right of centerline, up to 1532' MSL.

## NORFOLK, NE

### NORFOLK RGNL/KARL STEFAN MEML FLD (OFK)

#### TAKEOFF MINIMUMS AND (OBSTACLE) DEPARTURE PROCEDURES

AMDT 1 10SEP20 (21112) (FAA)

#### TAKEOFF OBSTACLE NOTES:

**Rwy 2**, lighting, terrain beginning 10' from DER, 30' right of centerline, up to 1' AGL/1532' MSL.

Fence 153' from DER, 520' left of centerline, 6' AGL/1536' MSL.

Trees beginning 1354' from DER, 363' left of centerline, up to 78' AGL/1600' MSL.

Pole 1364' from DER, 851' right of centerline, 50' AGL/1572' MSL.

Trees beginning 1419' from DER, 244' left of centerline, up to 67' AGL/1608' MSL.

Trees beginning 3377' from DER, 539' left of centerline, up to 82' AGL/1622' MSL.

**Rwy 14**, electrical system 18' from DER, 498' left of centerline, 3' AGL/1565' MSL.

Terrain 56' from DER, 337' right of centerline, 1566' MSL.

Terrain 58' from DER, 476' right of centerline, 1567' MSL.

Terrain beginning 182' from DER, 454' right of centerline, up to 1571' MSL.

Tree, building beginning 764' from DER, 534' left of centerline, up to 46' AGL/1610' MSL.

Trees beginning 929' from DER, 334' left of centerline, up to 53' AGL/1615' MSL.

Tree, building beginning 1079' from DER, 318' left of centerline, up to 1628' MSL.

Trees beginning 1267' from DER, 48' left of centerline, up to 76' AGL/1641' MSL.

Tree 1754' from DER, 187' right of centerline, 1619' MSL.

Tree 1938' from DER, 579' right of centerline, 46' AGL/1624' MSL.

Tree 2071' from DER, 695' right of centerline, 50' AGL/1630' MSL.

Trees beginning 2217' from DER, 300' right of centerline, up to 1639' MSL.

Trees beginning 2357' from DER, 627' right of centerline, up to 48' AGL/1641' MSL.

Trees beginning 2399' from DER, 654' right of centerline, up to 51' AGL/1644' MSL.

Tree 4385' from DER, 1618' right of centerline, 95' AGL/1684' MSL.

CON'T

# TAKEOFF MINIMUMS, (OBSTACLE) DEPARTURE PROCEDURES, AND DIVERSE VECTOR AREA (RADAR VECTORS)

24025

NC-2

# TAKEOFF MINIMUMS, (OBSTACLE) DEPARTURE PROCEDURES, AND DIVERSE VECTOR AREA (RADAR VECTORS)

24025

## NORFOLK, NE (CON'T)

### NORFOLK RGNL/KARL STEFAN MEML FLD (OFK) (CON'T)

**Rwy 14 (CON'T)**, trees beginning 4453' from DER, 1433' right of centerline, up to 102' AGL/1691' MSL.

**Rwy 20**, terrain 40' from DER, 486' left of centerline, 1575' MSL.

Terrain 116' from DER, 510' left of centerline, 1576' MSL.

Terrain 303' from DER, 566' left of centerline, 1581' MSL.

Fence 905' from DER, 665' left of centerline, 5' AGL/1596' MSL.

Tree 2365' from DER, 958' right of centerline, 1661' MSL.

Trees beginning 2384' from DER, 1033' right of centerline, up to 62' AGL/1677' MSL.

Tree 2703' from DER, 883' left of centerline, 23' AGL/1645' MSL.

Tree 2759' from DER, 712' left of centerline, 29' AGL/1650' MSL.

Trees beginning 2819' from DER, 335' left of centerline, up to 33' AGL/1656' MSL.

Trees beginning 3024' from DER, 509' left of centerline, up to 1691' MSL.

Trees beginning 3101' from DER, 632' right of centerline, up to 1698' MSL.

Trees beginning 3397' from DER, 231' right of centerline, up to 87' AGL/1700' MSL.

Trees beginning 5191' from DER, 428' right of centerline, up to 84' AGL/1705' MSL.

Tree 5209' from DER, 522' right of centerline, 85' AGL/1709' MSL.

**Rwy 32**, fence 46' from DER, 489' left of centerline, 6' AGL/1549' MSL.

Fence 151' from DER, 489' left of centerline, 5' AGL/1550' MSL.

Traverse way 643' from DER, 556' left of centerline, 1561' MSL.

Traverse way 756' from DER, 586' left of centerline, 1570' MSL.

Tree, traverse way beginning 809' from DER, 359' left of centerline, up to 27' AGL/1576' MSL.

Tree 1820' from DER, 572' right of centerline, 66' AGL/1596' MSL.

Tree 1921' from DER, 704' right of centerline, 77' AGL/1605' MSL.

Tree 2054' from DER, 973' left of centerline, 58' AGL/1604' MSL.

Trees beginning 2163' from DER, 43' left of centerline, up to 66' AGL/1617' MSL.

Tree 2625' from DER, 70' right of centerline, 74' AGL/1609' MSL.

Tree 3090' from DER, 1251' right of centerline, 57' AGL/1626' MSL.

## NORTH PLATTE, NE

### NORTH PLATTE RGNL/LEE BIRD FLD (LBF)

#### TAKEOFF MINIMUMS AND (OBSTACLE) DEPARTURE PROCEDURES

AMDT 5 19SEP13 (21112) (FAA)

##### DEPARTURE PROCEDURE:

**Rwy 30**, climb heading 301° to 4000 before turning right.

**Rwy 35**, climb heading 355° to 4000 before turning left.

##### TAKEOFF OBSTACLE NOTES:

**Rwy 12**, road 23' from DER, 14' left of centerline, 20' AGL/2784' MSL.

Road and tree beginning 62' from DER, 18' right of centerline, up to 84' AGL/2844' MSL.

**Rwy 17**, obstruction light on fence, bush, road, and numerous trees beginning 88' from DER, 1' left of centerline, up to 99' AGL/2866' MSL.

Terrain, road, and numerous trees beginning 26' from DER, 2' right of centerline, up to 102' AGL/2872' MSL.

**Rwy 30**, terrain, pole, and road beginning 74' from DER, 111' left of centerline, up to 48' AGL/2818' MSL.

Trees beginning 1128' from DER, 767' right of centerline, up to 73' AGL/2843' MSL.

**Rwy 35**, terrain, antenna, and trees beginning 100' from DER, 6' left of centerline, up to 73' AGL/2843' MSL.

Road and trees beginning 25' from DER, 8' right of centerline, up to 118' AGL/2818' MSL.

## NORTON, KS

### NORTON MUNI (NRN)

#### TAKEOFF MINIMUMS AND (OBSTACLE) DEPARTURE PROCEDURES

AMDT 2 25JAN24 (24025) (FAA)

##### TAKEOFF MINIMUMS:

**Rwy 8, 26**, NA-Environmental.

**Rwy 16**, 400-3 or std w/min climb of 216'/NM to 2900.

##### TAKEOFF OBSTACLE NOTES:

**Rwy 16**, terrain 43' from DER, 305' right of centerline, 2364' MSL.

Tower 1356' from DER, 565' left of centerline, 64' AGL/2407' MSL.

Tower 2.4 NM from DER, 3543' right of centerline, 358' AGL/2759' MSL.

**Rwy 34**, terrain 67' from DER, 313' left of centerline, 2386' MSL.

## OAKLEY, KS

### OAKLEY MUNI (OEL)

#### TAKEOFF MINIMUMS AND (OBSTACLE) DEPARTURE PROCEDURES

ORIG-A 20JUN19 (19171) (FAA)

##### DEPARTURE PROCEDURE:

**Rwys 8, 26**, NA-Environmental.

##### TAKEOFF OBSTACLE NOTES:

**Rwy 16**, bush 145' from DER, 496' left of centerline, 14' AGL/3034' MSL.

Road 208' from DER, 368' right of centerline, 15' AGL/3031' MSL.

**Rwy 34**, tree 855' from DER, 416' right of centerline, 50' AGL/3099' MSL.

# TAKEOFF MINIMUMS, (OBSTACLE) DEPARTURE PROCEDURES, AND DIVERSE VECTOR AREA (RADAR VECTORS)

24025

NC-2

# TAKEOFF MINIMUMS, (OBSTACLE) DEPARTURE PROCEDURES, AND DIVERSE VECTOR AREA (RADAR VECTORS)

24025

## OBERLIN, KS

### OBERLIN MUNI (OIN)

#### TAKEOFF MINIMUMS AND (OBSTACLE) DEPARTURE PROCEDURES

AMDT 2 12AUG21 (21224) (FAA)

##### TAKEOFF MINIMUMS:

Rwys 12, 30, NA-Environmental.

##### DEPARTURE PROCEDURE:

Rwy 17, climb on heading 174° to 3100 before turning east.

##### TAKEOFF OBSTACLE NOTES:

Rwy 17, lighting 9' from DER, 40' right of centerline, 2' AGL/2668' MSL.

Pole and trees beginning 444' from DER, 82' left of centerline, up to 2687' MSL.

Pole 569' from DER, 348' left of centerline, 2689' MSL.

Pole 709' from DER, 98' left of centerline, 27' AGL/2691' MSL.

Tree 1188' from DER, 224' right of centerline, 63' AGL/2701' MSL.

Rwy 35, tree and pole beginning 507' from DER, 213' left of centerline, up to 2725' MSL.

Pole 537' from DER, 464' right of centerline, 2727' MSL.

## OFFUTT AFB (KOFF)

### OMAHA, NE

#### TAKEOFF MINIMUMS AND (OBSTACLE) DEPARTURE PROCEDURES

ORIG 30NOV23 (23334) (USAF)

##### TAKEOFF OBSTACLE NOTES:

Rwy 13, antenna 275' from DER, on centerline, 7' AGL/968' MSL.

Possible vehicle 170' from DER, 159' left of centerline and 190' from DER, 165' right of centerline, 15' AGL/983' MSL.

Possible railroad 385' from DER, 355' left of centerline and 420' from DER, 400' right of centerline, up to 23' AGL/995' MSL.

Multiple trees beginning 3185' from DER, 69' left of centerline, up to 110' AGL/1076' MSL.

Terrain 0' from DER, 156' right of centerline, 972' MSL.

Multiple trees beginning 482' to 1149' from DER, 174' to 471' right of centerline, up to 26' AGL/990' MSL.

Irrigation equipment 545' from DER, 186' right of centerline, 20' AGL/985' MSL.

Rwy 31, antenna 201' from DER, on centerline, 7' AGL/1053' MSL.

Multiple trees beginning 296' from DER, 535' left of centerline, up to 110' AGL/1090' MSL.

Multiple trees beginning 1267' from DER, 552' right of centerline, up to 110' AGL/1098' MSL.

## OGALLALA, NE

### SEARLE FLD (OGA)

#### TAKEOFF MINIMUMS AND (OBSTACLE) DEPARTURE PROCEDURES

AMDT 5 10JAN13 (21168) (FAA)

##### TAKEOFF MINIMUMS:

Rwy 26, std. w/min. climb of 215' per NM to 4000'.

Rwy 31, std. w/min. climb of 320' per NM to 4400 or 1200-3 for climb in visual conditions. When executing VCOA, notify ATC prior to departure.

##### DEPARTURE PROCEDURE:

Rwy 8, climb heading 083° to 3900 before turning left.

Rwy 26, climb heading 263° to 4000 before turning right.

Rwy 31, for climb in visual conditions: cross Searle Fid at or above 4400' MSL before proceeding on course.

##### TAKEOFF OBSTACLE NOTES:

Rwy 8, rising terrain 224' from DER, left and right of centerline, up to 3261' MSL.

Light on windsock 235' from DER, 417' left of centerline, 16' AGL/3265' MSL.

Vehicles on road beginning 294' from DER, 555' right of centerline, up to 15' AGL/3257' MSL.

Train on tracks beginning 469' from DER, 615' right of centerline, up to 23' AGL/3264' MSL.

Wood poles beginning 566' from DER, 461' right of centerline, up to 24' AGL/3263' MSL.

Rwy 13, trees beginning 504' from DER, 247' right of centerline, up to 30' AGL/3269' MSL.

Trees and poles beginning 627' from DER, 168' right of centerline, up to 51' AGL/3290' MSL.

Rwy 26, fence 76' from DER, 252' right of centerline, 4' AGL/3265' MSL.

Terrain 143' from DER, 499' right of centerline, up to 3269' MSL.

Trees 2581' from DER, 964' left of centerline, up to 70' AGL/3339' MSL.

Rwy 31, tree 383' from DER, 290' left of centerline, up to 100' AGL/3379' MSL.

Trees beginning 877' from DER, 314' left of centerline, up to 100' AGL/3399' MSL.

Rising terrain beginning 379' from DER, left and right of centerline, up to 3586' MSL.

## OLATHE, KS

### JOHNSON COUNTY EXEC (OJC)

#### TAKEOFF MINIMUMS AND (OBSTACLE) DEPARTURE PROCEDURES

ORIG 27OCT05 (21112) (FAA)

##### TAKEOFF OBSTACLE NOTES:

Rwy 18, multiple trees 622' from DER, 192' right of centerline, up to 73' AGL/1084' MSL.

Rwy 36, antenna 335' from DER, 263' left of centerline, 20' AGL/1110' MSL.

Tree 1008' from DER, 612' right of centerline, 57' AGL/1130' MSL.

Tree 1544' from DER, 810' left of centerline, 71' AGL/1144' MSL.

# TAKEOFF MINIMUMS, (OBSTACLE) DEPARTURE PROCEDURES, AND DIVERSE VECTOR AREA (RADAR VECTORS)

24025

NC-2

# TAKEOFF MINIMUMS, (OBSTACLE) DEPARTURE PROCEDURES, AND DIVERSE VECTOR AREA (RADAR VECTORS)

24025

## OLATHE, KS (CON'T)

### NEW CENTURY AIRCENTER (IXD)

#### TAKEOFF MINIMUMS AND (OBSTACLE) DEPARTURE PROCEDURES

AMDT 1 15NOV12 (12320) (FAA)

#### TAKEOFF OBSTACLE NOTES:

- Rwy 4**, fence 204' from DER, 256' right of centerline, 11' AGL/1096' MSL.
- Obstruction light on fence, 295' from DER, 163' right of centerline, 13' AGL/1098' MSL.
- Trees beginning 1554' from DER, left and right of centerline, up to 100' AGL/1179' MSL.
- Rwy 18**, tree 1845' from DER, 133' left of centerline, 100' AGL/1159' MSL.
- Rwy 22**, trees beginning 260' from DER, left and right of centerline, up to 100' AGL/1159' MSL.
- Rwy 36**, ground beginning 17' from DER, 407' right of centerline, 1091' MSL.
- Vehicle on roadway beginning 24' from DER, left and right of centerline, up to 15' AGL/1101' MSL.

## OMAHA, NE

### EPPLEY AIRFIELD (OMA)

#### TAKEOFF MINIMUMS AND (OBSTACLE) DEPARTURE PROCEDURES

AMDT 6A 24MAY18 (18144) (FAA)

#### TAKEOFF MINIMUMS:

- Rwy 14L**, 300-2½ or std. w/ min. climb of 275' per NM to 1400.
- Rwy 14R**, 300-2½ or std. w/ min. climb of 210' per NM to 1400.

#### DEPARTURE PROCEDURE:

- Rwys 14L, 14R**, climb heading 142° to 1700 before proceeding on course.
- Rwy 18**, climb heading 178° to 1900 before turning right.
- Rwys 32L, 32R**, climb heading 322° to 2400 before turning left.
- Rwy 36**, climb heading 358° to 1900 before turning left.

#### TAKEOFF OBSTACLE NOTES:

- Rwy 14L**, utility point 22' from DER, 481' right of centerline, 8' AGL/986' MSL.
- Tree 3665' from DER, 1377' left of centerline, 1082' MSL.
- Tree 3955' from DER, 1152' left of centerline, 1084' MSL.
- Tree 3975' from DER, 116' left of centerline, 1088' MSL.
- Tree 4325' from DER, 1630' left of centerline, 1090' MSL.
- Tree 4345' from DER, 1621' left of centerline, 1096' MSL.
- Tree 1.2 NM from DER, 2449' left of centerline, 1176' MSL.
- Trees beginning 1.3 NM from DER, 2276' left of centerline, up to 1198' MSL.
- Trees beginning 1.3 NM from DER, 2426' left of centerline, up to 1203' MSL.
- Building 1.3 NM from DER, 2644' left of centerline, 22' AGL/1216' MSL.
- Trees beginning 1.3 NM from DER, 2402' left of centerline, up to 1245' MSL.
- Tree 1.3 nm from DER, 2591' left of centerline, 1250' MSL.
- Tree, building beginning 1.3 NM from DER, 2368' left of centerline, up to 47' AGL/1268' MSL.
- Tree, building beginning 1.6 NM from DER, 2435' left of centerline, up to 1277' MSL.
- Tree 1.8 NM from DER, 2750' left of centerline, 1279' MSL.
- Tree 1.8 NM from DER, 2410' left of centerline, 1280' MSL.
- Tree 1.9 NM from DER, 2392' left of centerline, 1281' MSL.
- Tree 1.9 NM from DER, 2522' left of centerline, 1284' MSL.
- Rwy 14R**, tree 3972' from DER, 1316' left of centerline, 1088' MSL.
- Tree 1.9 NM from DER, 3593' left of centerline, 1281' MSL.
- Rwy 18**, sign 38' from DER, 270' right of centerline, 4' AGL/980' MSL.
- Pole 887' from DER, 702' right of centerline, 1002' MSL.
- Tree 3953' from DER, 1124' left of centerline, 1085' MSL.
- Tree 4247' from DER, 120' left of centerline, 102' AGL/1087' MSL.
- Tree 4461' from DER, 140' right of centerline, 1090' MSL.
- Bridge 4549' from DER, 852' left of centerline, 150' AGL/1112' MSL.
- Bridge and poles beginning 4968' from DER, 1177' left of centerline, up to 149' AGL/1114' MSL.
- Rwy 32L**, pole and traverse way beginning 969' from DER, 659' right of centerline, up to 38' AGL/1018' MSL.
- Pole 1387' from DER, 795' left of centerline, 39' AGL/1019' MSL.
- Tree 2417' from DER, 1104' left of centerline, 83' AGL/1064' MSL.
- Tree 2706' from DER, 1098' right of centerline, 1054' MSL.
- Rwy 32R**, approach light 1' from DER, on centerline, 984' MSL.
- Approach light 10' from DER, 55' left of centerline, 5' AGL/985' MSL.
- Utility 169' from DER, 456' left of centerline, 10' AGL/990' MSL.
- Pole 1145' from DER, 790' right of centerline, 1017' MSL.
- Trees beginning 2216' from DER, 767' right of centerline, up to 1065' MSL.
- Trees beginning 3022' from DER, 956' right of centerline, up to 109' AGL/1091' MSL.
- Rwy 36**, approach light 456' from DER, 1' left of centerline, 11' AGL/993' MSL.
- Light pole beginning 939' from DER, 673' right of centerline, up to 32' AGL/1012' MSL.
- Traverse way 1121' from DER, 744' right of centerline, 1014' MSL.
- Traverse way beginning 1160' from DER, 317' right of centerline, up to 1015' MSL.
- Pole beginning 1339' from DER, 756' left of centerline, up to 38' AGL/1018' MSL.
- Trees beginning 2730' from DER, 1014' right of centerline, up to 101' AGL/1082' MSL.
- Trees beginning 3288' from DER, 1196' left of centerline, up to 1068' MSL.

22 FEB 2024 to 21 MAR 2024

22 FEB 2024 to 21 MAR 2024

# TAKEOFF MINIMUMS, (OBSTACLE) DEPARTURE PROCEDURES, AND DIVERSE VECTOR AREA (RADAR VECTORS)

24025

NC-2

# TAKEOFF MINIMUMS, (OBSTACLE) DEPARTURE PROCEDURES, AND DIVERSE VECTOR AREA (RADAR VECTORS)

24025

## OMAHA, NE (CON'T)

### MILLARD (MLE)

TAKEOFF MINIMUMS AND (OBSTACLE) DEPARTURE PROCEDURES

AMDT 3 15MAR07 (07074) (FAA)

TAKEOFF MINIMUMS:

**Rwy 30**, 300-1¼ or std. w/ min. climb of 370' per NM to 3000.

DEPARTURE PROCEDURE:

**Rwy 12**, climb via heading 123° to 3200 before proceeding on course.

**Rwy 30**, climb via heading 303° to 3000 before proceeding on course.

TAKEOFF OBSTACLE NOTES:

**Rwy 12**, multiple trees, power poles and highway signs beginning 250' from DER, 152' left of centerline, up to 35' AGL/1101' MSL.

Multiple trees and fences beginning 3' from DER, 381' right of centerline, up to 63' AGL/1104' MSL.

Multiple street lights beginning 1506' from DER, 678' left of centerline to 568' right of centerline, up to 46' AGL/1115' MSL.

**Rwy 30**, multiple towers, trees, power poles, buildings, street lights, fences, and road beginning 13' from DER, 264' left of centerline, up to 100' AGL/1270' MSL.

Multiple trees and power poles beginning 516' from DER, 343' right of centerline, up to 88' AGL/1137' MSL.

## O'NEILL, NE

### THE O'NEILL MUNI-JOHN L BAKER FLD (ONL)

TAKEOFF MINIMUMS AND (OBSTACLE) DEPARTURE PROCEDURES

AMDT 1 08NOV12 (21224) (FAA)

DEPARTURE PROCEDURE:

**Rwy 4**, climb heading 039° to 2600 before turning.

**Rwy 13**, climb heading 130° to 2600 before turning.

**Rwy 22**, climb heading 219° to 2600 before turning.

TAKEOFF OBSTACLE NOTES:

**Rwy 4**, tree, fence beginning 63' from DER, 491' left of centerline, up to 18' AGL/2048' MSL.

Tree 650' from DER, 379' right of centerline, 2054' MSL.

Trees beginning 763' from DER, 348' right of centerline, up to 2070' MSL.

Trees beginning 918' from DER, 325' right of centerline, up to 58' AGL/2078' MSL.

Trees beginning 2338' from DER, 309' left of centerline, up to 2091' MSL.

Tree 2795' from DER, 770' left of centerline, 87' AGL/2102' MSL.

**Rwy 22**, fence 16' from DER, 494' left of centerline, 3' AGL/2034' MSL.

Terrain 163' from DER, 468' left of centerline, 2041' MSL.

Terrain 297' from DER, 460' left of centerline, 2051' MSL.

Trees beginning 1019' from DER, 507' left of centerline, up to 54' AGL/2070' MSL.

Tree 1123' from DER, 499' right of centerline, 2064' MSL.

Tree 1168' from DER, 592' right of centerline, 71' AGL/2073' MSL.

**Rwy 31**, electrical system 11' from DER, 112' right of centerline, 5' AGL/2034' MSL.

Electrical system 11' from DER, 112' left of centerline, 5' AGL/2034' MSL.

Tree 697' from DER, 500' right of centerline, 23' AGL/2055' MSL.

Trees beginning 1066' from DER, 522' left of centerline, up to 38' AGL/2069' MSL.

Tree 1790' from DER, 712' left of centerline, 64' AGL/2089' MSL.

Trees beginning 1889' from DER, 655' left of centerline, up to 81' AGL/2109' MSL.

## ORD, NE

### EVELYN SHARP FLD (ODX)

TAKEOFF MINIMUMS AND (OBSTACLE) DEPARTURE PROCEDURES

AMDT 3 07MAY09 (21224) (FAA)

TAKEOFF MINIMUMS:

**Rwys 17, 35**, NA-Environmental.

DEPARTURE PROCEDURE:

**Rwy 13**, climb heading 131° to 3000 before turning right.

TAKEOFF OBSTACLE NOTES:

**Rwy 13**, pole 860' from DER, 498' left of centerline, 39' AGL/2098' MSL.

Trees beginning 705' from DER, 505' left of centerline, up to 37' AGL/2096' MSL.

Trees beginning 43' from DER, 443' right of centerline, up to 45' AGL/2104' MSL.

**Rwy 31**, trees beginning 2590' from DER, 276' left of centerline, up to 84' AGL/2183' MSL.

Poles beginning 1234' from DER, 1' left of centerline, up to 60' AGL/2130' MSL.

Tank 2615' from DER, 256' left of centerline, 69' AGL/2139' MSL.

Fence 199' from DER, 241' left of centerline, 5' AGL/2075' MSL.

Tree 55' from DER, 348' right of centerline, 2' AGL/2072' MSL.

## OSHKOSH, NE

### GARDEN COUNTY/KING RHILEY FLD (OKS)

TAKEOFF MINIMUMS AND (OBSTACLE) DEPARTURE PROCEDURES

ORIG-A 20JUN19 (21168) (FAA)

DEPARTURE PROCEDURE:

**Rwy 12**, climb heading 125° to 4000 before turning right.

**Rwy 30**, climb heading 305° to 3900 before turning right.

CON'T

# TAKEOFF MINIMUMS, (OBSTACLE) DEPARTURE PROCEDURES, AND DIVERSE VECTOR AREA (RADAR VECTORS)

24025



# TAKEOFF MINIMUMS, (OBSTACLE) DEPARTURE PROCEDURES, AND DIVERSE VECTOR AREA (RADAR VECTORS)

24025

## OSHKOSH, NE (CON'T)

### GARDEN COUNTY/KING RHILEY FLD (OKS) (CON'T)

#### TAKEOFF OBSTACLE NOTES:

- Rwy 12**, multiple trees beginning 1378' from DER, 352' right of centerline, up to 57' AGL/3433' MSL. Trees beginning 644' from DER, 429' left of centerline, up to 32' AGL/3410' MSL. Vehicles on road, 388' from DER, right and left of centerline, up to 17' AGL/3396' MSL.
- Rwy 30**, wood beginning 1031' from DER, 506' right of centerline, 29' AGL/3424' MSL. Multiple trees beginning 328' from DER, 305' left of centerline, up to 58' AGL/3453' MSL. Wood 1072' from DER, 569' left of centerline, 29' AGL/3421' MSL.

## OTTAWA, KS

### OTTAWA MUNI (OWI)

#### TAKEOFF MINIMUMS AND (OBSTACLE) DEPARTURE PROCEDURES

AMDT 3 27JAN22 (22027) (FAA)

#### TAKEOFF MINIMUMS:

**Rwys 13, 31**, NA-Environmental.

**Rwy 35**, 400-3 or std. w/min. climb of 220' per NM to 1500, or alternatively, with std. takeoff minimums and a normal 200' per NM climb gradient, takeoff must occur no later than 1500' prior to DER.

#### DEPARTURE PROCEDURE:

**Rwy 35**, climb on heading 356° to 1600 before turning right.

#### TAKEOFF OBSTACLE NOTES:

- Rwy 17**, signs beginning 11' from DER, 76' left of centerline, up to 2' AGL/965' MSL. Signs beginning 12' from DER, 37' left of centerline, up to 2' AGL/966' MSL.
- Rwy 35**, tree, pole beginning 1531' from DER, 117' left of centerline, up to 61' AGL/1030' MSL. Poles beginning 1649' from DER, 116' right of centerline, up to 44' AGL/1011' MSL. Pole 1707' from DER, 248' right of centerline, 47' AGL/1013' MSL. Trees beginning 1756' from DER, 298' right of centerline, up to 56' AGL/1022' MSL. Tree 2013' from DER, 838' right of centerline, 70' AGL/1029' MSL. Tower 2.3 NM from DER, 3810' left of centerline, 402' AGL/1331' MSL.

## PAOLA, KS

### MIAMI COUNTY (K81)

#### TAKEOFF MINIMUMS AND (OBSTACLE) DEPARTURE PROCEDURES

ORIG-A 08SEP22 (22251) (FAA)

#### TAKEOFF MINIMUMS:

**Rwys 15, 33**, NA-Environmental.

#### TAKEOFF OBSTACLE NOTES:

- Rwy 3**, trees beginning 288' from DER, 317' right of centerline, up to 100' AGL/1034' MSL. Trees beginning 1340' from DER, 93' left of centerline, up to 100' AGL/1034' MSL.
- Rwy 21**, vehicles on roadway across centerline 891' from DER, up to 15' AGL/964' MSL. Trees beginning 1162' from DER, 54' right of centerline, up to 100' AGL/1049' MSL. Power lines beginning 3190' from DER, left and right of centerline, up to 120' AGL/1059' MSL.

## PARSONS, KS

### TRI-CITY (PPF)

#### TAKEOFF MINIMUMS AND (OBSTACLE) DEPARTURE PROCEDURES

ORIG 25SEP08 (08269) (FAA)

#### TAKEOFF OBSTACLE NOTES:

- Rwy 17**, trees beginning 23' from DER, 253' right of centerline, up to 66' AGL/917' MSL. Trees and power poles beginning 8' from DER, 243' left of centerline, up to 56' AGL/916' MSL.
- Rwy 35**, trees beginning 12' from DER, 138' right of centerline, up to 40' AGL/956' MSL. Vehicle on road 720' from DER, 7' left and right of centerline, 17' AGL/941' MSL. Trees beginning 728' from DER, 66' left of centerline, up to 20' AGL/935' MSL.

## PENDER, NE

### PENDER MUNI (0C4)

#### TAKEOFF MINIMUMS AND (OBSTACLE) DEPARTURE PROCEDURES

ORIG-A 24MAY18 (18144) (FAA)

#### TAKEOFF MINIMUMS:

**Rwy 15**, 300-1½ or std. w/ min. climb of 219 feet per NM to 1700.

#### TAKEOFF OBSTACLE NOTES:

- Rwy 15**, trees beginning 240' from DER, 422' right of centerline, up to 80' AGL/1539' MSL. Tree 169' from DER, 425' left of centerline, 38' AGL/1367' MSL.
- Rwy 33**, terrain beginning 8' from DER, 429' left of centerline, 1355' MSL. Fence beginning 139' from DER, 424' left of centerline, up to 3' AGL/1355' MSL. Power poles beginning 263' from DER, crossing right and left of centerline, up to 29' AGL/1380' MSL. Poles beginning 1530' from DER, 397' left of centerline, up to 34' AGL/1403' MSL. Trees beginning 1971' from DER, 571' left of centerline, up to 72' AGL/1450' MSL.

# TAKEOFF MINIMUMS, (OBSTACLE) DEPARTURE PROCEDURES, AND DIVERSE VECTOR AREA (RADAR VECTORS)

24025

NC-2

# TAKEOFF MINIMUMS, (OBSTACLE) DEPARTURE PROCEDURES, AND DIVERSE VECTOR AREA (RADAR VECTORS)

24025

## PHILLIPSBURG, KS

### PHILLIPSBURG MUNI (PHG)

#### TAKEOFF MINIMUMS AND (OBSTACLE) DEPARTURE PROCEDURES

AMDT 1 31MAR16 (16091) (FAA)

#### TAKEOFF MINIMUMS:

**Rwys 3, 21**, NA-Environmental.

#### TAKEOFF OBSTACLE NOTES:

**Rwy 13**, electrical system 4' from DER, 105' right of centerline, 4' AGL/1886' MSL.

Electrical system 5' from DER, 105' left of centerline, 3' AGL/1886' MSL.

Tower, trees, and road beginning 2' from DER, 305' left of centerline, up to 43' AGL/1927' MSL.

Poles beginning 329' from DER, 26' left of centerline, up to 40' AGL/1921' MSL.

Trees beginning 1230' from DER, 76' left of centerline, up to 43' AGL/1923' MSL.

**Rwy 31**, electrical system 4' from DER, 106' left of centerline, 2' AGL/1907' MSL.

Fence 33' from DER, 480' right of centerline, 4' AGL/1911' MSL.

Poles beginning 71' from DER, 516' right of centerline, up to 52' AGL/1959' MSL.

Trees and road beginning 323' from DER, 184' right of centerline, up to 40' AGL/1934' MSL.

Road 439' from DER, 528' left of centerline, up to 15' AGL/1919' MSL.

Trees and pole beginning 629' from DER, 468' left of centerline, up to 40' AGL/1944' MSL.

Trees beginning 1933' from DER, 936' right of centerline, up to 40' AGL/1965' MSL.

Tree 2394' from DER, 1063' left of centerline, up to 40' AGL/1974' MSL.

## PITTSBURG, KS

### ATKINSON MUNI (PTS)

#### TAKEOFF MINIMUMS AND (OBSTACLE) DEPARTURE PROCEDURES

AMDT 2 01FEB18 (18032) (FAA)

#### TAKEOFF MINIMUMS:

**Rwy 4**, 200-1 or std. w/ min. climb of 370' per NM to 1200.

#### TAKEOFF OBSTACLE NOTES:

**Rwy 4**, tree 53' from DER, 399' right of centerline, 976' MSL.

Trees, beginning 181' from DER, 255' left of centerline, up to 1008' MSL.

Tree 196' from DER, 356' right of centerline, 987' MSL.

Trees, transmission line and pole, beginning 215' from DER, 74' right of centerline, up to 997' MSL.

Tree 559' from DER, 456' left of centerline, 1001' MSL.

Elevator 2327' from DER, 218' left of centerline, 96' AGL/1028' MSL.

Tank 3418' from DER, 1113' left of centerline, 148' AGL/1079' MSL.

Water tower 3429' from DER, 1120' left of centerline, 143' AGL/1076' MSL.

**Rwy 17**, lighting 7' from DER, 27' right of centerline, 929' MSL.

Lighting 7' from DER, 26' left of centerline, 928' MSL.

Terrain 12' from DER, 295' right of centerline, 930' MSL.

Building beginning 93' from DER, 387' right of centerline, up to 22' AGL/953' MSL.

Pole 802' from DER, 671' right of centerline, 28' AGL/962' MSL.

Trees beginning 1086' from DER, 353' left of centerline, up to 990' MSL.

Tree 1406' from DER, 665' right of centerline, 992' MSL.

Trees beginning 1477' from DER, 35' right of centerline, up to 1000' MSL.

**Rwy 35**, fence 59' from DER, 465' left of centerline, 12' AGL/946' MSL.

Tree 73' from DER, 471' right of centerline, 962' MSL.

Tree 194' from DER, 505' left of centerline, 962' MSL.

Trees beginning 372' from DER, 488' right of centerline, up to 980' MSL.

Tree 753' from DER, 543' right of centerline, 985' MSL.

Trees beginning 759' from DER, 533' right of centerline, up to 990' MSL.

Trees beginning 930' from DER, 594' right of centerline, up to 992' MSL.

Tree 1012' from DER, 642' left of centerline, 994' MSL.

Trees beginning 1365' from DER, 543' right of centerline, up to 997' MSL.

Tree 1753' from DER, 629' left of centerline, 1002' MSL.

Trees beginning 1839' from DER, 600' left of centerline, up to 1005' MSL.

Trees beginning 1948' from DER, 36' right of centerline, up to 1000' MSL.

Trees beginning 1990' from DER, 38' left of centerline, up to 1013' MSL.

Tree 2388' from DER, 324' right of centerline, 1003' MSL.

Trees beginning 2471' from DER, 163' right of centerline, up to 1010' MSL.

Tree 2921' from DER, 487' right of centerline, 1022' MSL.

Trees beginning 3230' from DER, 54' left of centerline, up to 1020' MSL.

22 FEB 2024 to 21 MAR 2024

22 FEB 2024 to 21 MAR 2024

# TAKEOFF MINIMUMS, (OBSTACLE) DEPARTURE PROCEDURES, AND DIVERSE VECTOR AREA (RADAR VECTORS)

24025

NC-2

# TAKEOFF MINIMUMS, (OBSTACLE) DEPARTURE PROCEDURES, AND DIVERSE VECTOR AREA (RADAR VECTORS)

24025

## QUINTER, KS

### GOVE COUNTY (1QK)

#### TAKEOFF MINIMUMS AND (OBSTACLE) DEPARTURE PROCEDURES

ORIG 24MAR22 (22083) (FAA)

##### TAKEOFF MINIMUMS:

**Rwy 35**, 400-2¼ or std. w/min. climb of 300' per NM to 3000.

##### TAKEOFF OBSTACLE NOTES:

**Rwy 17**, lighting 10' from DER, 40' right of centerline, 1' AGL/2614' MSL.

Trees beginning 1311' from DER, 124' right of centerline, up to 80' AGL/2657' MSL.

Tree 1347' from DER, 414' left of centerline, 93' AGL/2670' MSL.

Tree 1361' from DER, 400' left of centerline, 96' AGL/2673' MSL.

Trees beginning 1813' from DER, 242' left of centerline, up to 101' AGL/2680' MSL.

**Rwy 35**, building 24' from DER, 473' left of centerline, 21' AGL/2659' MSL.

Building, traverse way beginning 141' from DER, 487' left of centerline, up to 31' AGL/2670' MSL.

Electrical system 568' from DER, 485' right of centerline, 28' AGL/2668' MSL.

Pole 4652' from DER, 1335' left of centerline, 102' AGL/2760' MSL.

Tower 1.2 NM from DER, 729' right of centerline, 200' AGL/2862' MSL.

Tower 1.8 NM from DER, 1662' right of centerline, 311' AGL/2962' MSL.

## RED CLOUD, NE

### RED CLOUD MUNI (7V7)

#### TAKEOFF MINIMUMS AND (OBSTACLE) DEPARTURE PROCEDURES

ORIG 26JUL12 (12208) (FAA)

##### TAKEOFF OBSTACLE NOTES:

**Rwy 16**, Trees and poles beginning 10' from DER, 213' left of centerline, up to 86' AGL/1771' MSL.

Rising terrain, trees, and vehicles on roads beginning 41' from DER, 39' right of centerline, up to 68' AGL/1763' MSL.

**Rwy 34**, Structure, poles, vehicles on roads, and trees beginning 119' from DER, 103' left of centerline, up to 88' AGL/1838' MSL.

Agriculture equipment, pole, vehicles on roads, and trees beginning 498' from DER, 168' right of centerline, up to 69' AGL/1889' MSL.

## RUSHVILLE, NE

### MODISETT (9V5)

#### TAKEOFF MINIMUMS AND (OBSTACLE) DEPARTURE PROCEDURES

ORIG 27AUG09 (09239) (FAA)

##### TAKEOFF OBSTACLE NOTES:

**Rwy 14**, trees 21' from DER, 210' right of centerline, up to 47' AGL/3792' MSL.

Multiple trees beginning 251' from DER, 302' left of centerline, up to 50' AGL/3805' MSL.

Multiple power poles beginning 427' from DER, 31' left of centerline, up to 47' AGL/3834' MSL.

Multiple power poles beginning 1179' from DER, 235' right of centerline, up to 67' AGL/3816' MSL.

Multiple buildings beginning 415' from DER, 409' left of centerline, up to 25' AGL/3778' MSL.

Fence, 203' from DER, 318' left of centerline, 4' AGL/3757' MSL.

**Rwy 32**, terrain 964' from DER, 355' left of centerline, 0' AGL/3778' MSL.

Fence, 51' from DER, 282' left of centerline, 4' AGL/3751' MSL.

## RUSSELL, KS

### RUSSELL MUNI (RSL)

#### TAKEOFF MINIMUMS AND (OBSTACLE) DEPARTURE PROCEDURES

AMDT 1 25OCT07 (07298) (FAA)

##### DEPARTURE PROCEDURE:

**Rwy 17**, climb via heading 167° to 3400 before turning east.

##### TAKEOFF OBSTACLE NOTES:

**Rwy 17**, post 167' from DER, 324' left of centerline, 6' AGL/1868' MSL.

**Rwy 35**, multiple poles beginning 417' from DER, 142' right of centerline, up to 30' AGL/1890' MSL.

## ST. FRANCIS, KS

### CHEYENNE COUNTY MUNI (SYF)

#### TAKEOFF MINIMUMS AND (OBSTACLE) DEPARTURE PROCEDURES

ORIG-A 28FEB19 (19059) (FAA)

##### TAKEOFF MINIMUMS:

**Rwys 18, 36**, NA - Environmental

##### TAKEOFF OBSTACLE NOTES:

**Rwy 14**, rising terrain 61' from DER, 366' right of centerline, 3437' MSL.

Poles beginning 2862' from DER, on centerline, up to 39' AGL/3511' MSL.

**Rwy 32**, building 10' from DER, 426' right of centerline, 24' AGL/3418' MSL.

Poles and trees beginning 334' from DER, 93' right of centerline, up to 35' AGL/3422' MSL.

Trees beginning 568' from DER, 75' left of centerline, up to 39' AGL/3414' MSL.

# TAKEOFF MINIMUMS, (OBSTACLE) DEPARTURE PROCEDURES, AND DIVERSE VECTOR AREA (RADAR VECTORS)

24025

NC-2

# TAKEOFF MINIMUMS, (OBSTACLE) DEPARTURE PROCEDURES, AND DIVERSE VECTOR AREA (RADAR VECTORS)

24025

## SALINA, KS

### SALINA RGNL (SLN)

#### TAKEOFF MINIMUMS AND (OBSTACLE) DEPARTURE PROCEDURES

ORIG 20NOV08 (08325) (FAA)

##### TAKEOFF OBSTACLE NOTES:

**Rwy 4**, light on hangar 1560' from DER, 196' right of centerline, 52' AGL/1302' MSL.

**Rwy 12**, rod on obstruction light GS 1608' from DER, 617' left of centerline, 44' AGL/1315' MSL.

Trees beginning 4018' from DER, 421' left of centerline, up to 100' AGL/1379' MSL.

Trees beginning 5330' from DER, 1917' right of centerline, up to 100' AGL/1419' MSL.

**Rwy 17**, road with vehicles 1458' from DER, from left to right of centerline, up to 15' AGL/1314' MSL.

Pole 1505' from DER, 782' right of centerline, 12' AGL/1312' MSL.

**Rwy 18**, rising terrain beginning 537' from DER, 338' right of centerline, up to 1309' MSL.

Road with vehicles beginning 891' from DER, 586' left of centerline, up to 15' AGL/1314' MSL.

Road with vehicles beginning 1095' from DER, 762' right of centerline, up to 15' AGL/1324' MSL.

Trees beginning 2065' from DER, from left to right of centerline, up to 100' AGL/1409' MSL.

**Rwy 22**, trees beginning 4195' from DER, 65' right of centerline, up to 100' AGL/1399' MSL.

**Rwy 30**, trees beginning 1227' from DER, 785' left of centerline, up to 100' AGL/1349' MSL.

Trees beginning 2400' from DER, from left to right of centerline, up to 100' AGL/1359' MSL.

**Rwy 36**, trees beginning 367' from DER, 305' left of centerline, up to 100' AGL/1349' MSL.

Trees beginning 1663' from DER, from left to right of centerline, up to 100' AGL/1349' MSL.

## SCOTT CITY, KS

### SCOTT CITY MUNI (TQK)

#### TAKEOFF MINIMUMS AND (OBSTACLE) DEPARTURE PROCEDURES

AMDT 1 25FEB21 (21056) (FAA)

##### TAKEOFF MINIMUMS:

**Rwys 8, 26**, NA - Environmental.

##### DEPARTURE PROCEDURE:

**Rwy 35**, climb on heading 351° to 3500 before turning left.

##### TAKEOFF OBSTACLE NOTES:

**Rwy 17**, vehicles on road abeam DER, 348' left of centerline, up to 15' AGL/2964' MSL.

Vehicles on road abeam DER, 359' right of centerline, up to 15' AGL/2964' MSL.

Vehicles on road beginning 450' from DER, crossing extended runway centerline, up to 15' AGL/2964' MSL.

**Rwy 35**, electrical system 7' from DER, 27' right of centerline, 1' AGL/2960' MSL.

Tree 294' from DER, 534' left of centerline, 26' AGL/2977' MSL.

Tree 469' from DER, 570' left of centerline, 35' AGL/2986' MSL.

Vehicles on road 576' from DER, crossing extended runway centerline, up to 15' AGL/2975' MSL.

## SCOTTSBUFF, NE

### WESTERN NEBRASKA RGNL/WILLIAM B HEILIG FLD (BFF)

#### TAKEOFF MINIMUMS AND (OBSTACLE) DEPARTURE PROCEDURES

AMDT 4 24JUN93 (21112) (FAA)

##### DEPARTURE PROCEDURE:

**Rwy 23**, climbing right turn to 5500 via heading 300° before proceeding on course.

**Rwy 30**, climb runway heading to 5500 before proceeding on course.

## SCRIBNER, NE

### SCRIBNER STATE (SCB)

#### TAKEOFF MINIMUMS AND (OBSTACLE) DEPARTURE PROCEDURES

ORIG 13JAN11 (11013) (FAA)

##### TAKEOFF OBSTACLE NOTES:

**Rwy 12**, trees beginning 644' from DER, 225' left of centerline up to 100' AGL/1440' MSL.

**Rwy 17**, aircraft on taxiway 958' from DER, 188' left of centerline 29' AGL/1353' MSL.

Trees beginning 1391' from DER, 171' right of centerline up to 100' AGL/1420' MSL.

**Rwy 30**, trees beginning 1492' from DER, 461' left of centerline up to 100' AGL/1420' MSL.

**Rwy 35**, trees beginning 1362' from DER, 273' right of centerline up to 100' AGL/1414' MSL.

## SEWARD, NE

### SEWARD MUNI (SWT)

#### TAKEOFF MINIMUMS AND (OBSTACLE) DEPARTURE PROCEDURES

ORIG-B 25APR19 (19115) (FAA)

##### TAKEOFF MINIMUMS:

**Rwys 4, 22**, NA - Environmental.

##### DEPARTURE PROCEDURE:

**Rwy 16**, climb heading 168° to 3500 before turning right.

**Rwy 34**, climb heading 348° to 3000 before turning left.

##### TAKEOFF OBSTACLE NOTES:

**Rwy 16**, sign 10' from DER, 482' right of centerline, 10' AGL/1513' MSL.

Fence, sign beginning 22' from DER, 342' right of centerline, up to 11' AGL/1514' MSL.

**Rwy 34**, fence beginning 58' from DER, 449' left of centerline, up to 4' AGL/1506' MSL.

Trees beginning 474' from DER, 395' left of centerline, up to 33' AGL/1526' MSL.

Pole 1281' from DER, 676' left of centerline, 29' AGL/1530' MSL.

# TAKEOFF MINIMUMS, (OBSTACLE) DEPARTURE PROCEDURES, AND DIVERSE VECTOR AREA (RADAR VECTORS)

24025

NC-2


**TAKEOFF MINIMUMS, (OBSTACLE) DEPARTURE PROCEDURES, AND  
DIVERSE VECTOR AREA (RADAR VECTORS)**


24025

**SIDNEY, NE**

SIDNEY MUNI/LLOYD W CARR FLD (SNY)

TAKEOFF MINIMUMS AND (OBSTACLE) DEPARTURE PROCEDURES

AMDT 1 31JUL08 (21280) (FAA)

TAKEOFF MINIMUMS:

**Rwys 3, 21**, NA-Environmental.**STOCKTON, KS**

ROOKS COUNTY (RCP)

TAKEOFF MINIMUMS AND (OBSTACLE) DEPARTURE PROCEDURES

ORIG 12DEC13 (13346) (FAA)

TAKEOFF MINIMUMS:

**Rwys 14, 32**, NA-Environmental.**SUPERIOR, NE**

SUPERIOR MUNI (12K)

TAKEOFF MINIMUMS AND (OBSTACLE) DEPARTURE PROCEDURES

AMDT 1 31MAY12 (12152) (FAA)

TAKEOFF MINIMUMS:

**Rwys 18, 36**, NA-Environmental.

TAKEOFF OBSTACLE NOTES:

**Rwy 14**, trees 1037' from DER, left and right of centerline, up to 55' AGL/1674' MSL.**Rwy 32**, rising terrain beginning 100' from DER, 492' left of centerline, up to 1713' MSL.**SYRACUSE, KS**

SYRACUSE-HAMILTON COUNTY MUNI (3K3)

TAKEOFF MINIMUMS AND (OBSTACLE) DEPARTURE PROCEDURES

AMDT 1 27JAN22 (22027) (FAA)

TAKEOFF MINIMUMS:

**Rwy 13**, 300-1¼ or std. w/min. climb of 265' per NM to 3700, or alternatively, with std. takeoff minimums and a normal 200' per NM climb gradient, takeoff must occur no later than 1200' prior to DER.

DEPARTURE PROCEDURE:

**Rwy 31**, climb on heading 293° to 4000 before turning right.

TAKEOFF OBSTACLE NOTES:

**Rwy 13**, trees, houses beginning 210' from DER, 191' right of centerline, up to 40' AGL/3343' MSL.

Vehicles on road beginning 256' from DER, left and right of centerline, up to 15' AGL/3315' MSL.

Tower 1.4 NM from DER, 668' left of centerline, 303' AGL/3533' MSL.

**Rwy 18**, grain bin elevator 465' from DER, 506' right of centerline, 21' AGL/3331' MSL.

Water tank tower 1898' from DER, 393' left of centerline, 99' AGL/3399' MSL.

**Rwy 31**, bldg 130' from DER, 310' left of centerline, 40' AGL/3352' MSL.

Vehicles on road beginning 282' from DER, left and right of centerline, up to 15' AGL/3327' MSL.

**Rwy 36**, vertical structure, transmission line beginning 1596' from DER, 127' left of centerline, up to 52' AGL/3367' MSL.**TECUMSEH, NE**

TECUMSEH MUNI (0G3)

TAKEOFF MINIMUMS AND (OBSTACLE) DEPARTURE PROCEDURES

ORIG 27JUN13 (13178) (FAA)

TAKEOFF OBSTACLE NOTES:

**Rwy 15**, trees beginning 372' from DER, 535' left of centerline, up to 50' AGL/1322' MSL.**Rwy 33**, trees beginning 386' from DER, 149' right of centerline, up to 50' AGL/1336' MSL.

Trees beginning 390' from DER, 406' left of centerline, up to 50' AGL/1345' MSL.

Vehicle on road beginning 373' from DER, 476' right of centerline, up to 15' AGL/1326' MSL.

**TEKAMAH, NE**

TEKAMAH MUNI (TQE)

TAKEOFF MINIMUMS AND (OBSTACLE) DEPARTURE PROCEDURES

AMDT 3 30MAR17 (17089) (FAA)

DEPARTURE PROCEDURE:

**Rwy 33**, climb heading 331° to 1500 before turning left.

TAKEOFF OBSTACLE NOTES:

**Rwy33**, building peak 98' from DER, 421' right of centerline, 1044' MSL.

22 FEB 2024 to 21 MAR 2024

22 FEB 2024 to 21 MAR 2024


**TAKEOFF MINIMUMS, (OBSTACLE) DEPARTURE PROCEDURES, AND  
DIVERSE VECTOR AREA (RADAR VECTORS)**


24025

NC-2

# TAKEOFF MINIMUMS, (OBSTACLE) DEPARTURE PROCEDURES, AND DIVERSE VECTOR AREA (RADAR VECTORS)

24025

## THEDFORD, NE

### THOMAS COUNTY (TIF)

#### TAKEOFF MINIMUMS AND (OBSTACLE) DEPARTURE PROCEDURES

AMDT 1 25SEP08 (08269) (FAA)

#### TAKEOFF OBSTACLE NOTES:

**Rwy 11**, trees and rising terrain beginning 36' from DER, 458' right of centerline, up to 75' AGL/3054' MSL.

Vehicles on road beginning 749' from DER, 351' left of centerline, up to 17' AGL/2936' MSL.

**Rwy 29**, trees and rising terrain beginning 15' from DER, 223' left of centerline, up to 75' AGL/3034' MSL.

## TOPEKA, KS

### PHILIP BILLARD MUNI (TOP)

#### TAKEOFF MINIMUMS AND (OBSTACLE) DEPARTURE PROCEDURES

AMDT 1A 01FEB18 (18032) (FAA)

#### DEPARTURE PROCEDURE:

**Rwy 31**, climb on heading 309° to 1800 before turning left.

#### TAKEOFF OBSTACLE NOTES:

**Rwy 13**, pole 54' from DER, 459' left of centerline, 3' AGL/879' MSL.

Vehicle on road 80' from DER, 499' left of centerline, 889' MSL.

Tree, vehicle on road beginning 96' from DER, 373' left of centerline, up to 38' AGL/919' MSL.

Trees beginning 1519' from DER, 668' right of centerline, up to 64' AGL/931' MSL.

**Rwy 18**, tree 13' from DER, 490' right of centerline, 43' AGL/919' MSL.

Trees, pole beginning 695' from DER, 583' right of centerline, up to 73' AGL/950' MSL.

Pole 1017' from DER, 614' left of centerline, 46' AGL/920' MSL.

Pole, tree beginning 1018' from DER, 331' left of centerline, up to 47' AGL/922' MSL.

Tree 1108' from DER, 756' right of centerline, 961' MSL.

Trees, pole beginning 1130' from DER, 352' right of centerline, up to 85' AGL/963' MSL.

Trees beginning 1751' from DER, 43' left of centerline, up to 83' AGL/958' MSL.

Tree 3800' from DER, 222' right of centerline, 83' AGL/988' MSL.

Tree 3884' from DER, 198' right of centerline, 993' MSL.

Trees beginning 4098' from DER, 444' left of centerline, up to 999' MSL.

Tree 4690' from DER, 504' left of centerline, 68' AGL/1000' MSL.

Trees beginning 4723' from DER, 265' left of centerline, up to 89' AGL/1020' MSL.

**Rwy 31**, tree 1019' from DER, 703' left of centerline, 943' MSL.

Trees beginning 1029' from DER, 669' left of centerline, up to 68' AGL/948' MSL.

Trees beginning 2493' from DER, 931' left of centerline, up to 104' AGL/984' MSL.

**Rwy 36**, tree 3027' from DER, 628' left of centerline, 966' MSL.

Trees beginning 3068' from DER, 265' left of centerline, up to 975' MSL.

Trees beginning 3451' from DER, 1217' right of centerline, up to 114' AGL/974' MSL.

Rising terrain with trees beginning 1.1 NM from DER, on centerline, up to 100' AGL/1129' MSL.

## TOPEKA RGNL (FOE)

#### TAKEOFF MINIMUMS AND (OBSTACLE) DEPARTURE PROCEDURES

ORIG-A 18AUG16 (16231) (FAA)

#### TAKEOFF OBSTACLE NOTES:

**Rwy 3**, trees beginning 1424' from DER, 217' left of centerline, up to 59' AGL/1099' MSL.

Tree 1523' from DER, 370' right of centerline, 49' AGL/1088' MSL.

**Rwy 31**, rising terrain 38' from DER, 441' right of centerline, 1064' MSL.

## TRIBUNE, KS

### TRIBUNE MUNI (5K2)

#### TAKEOFF MINIMUMS AND (OBSTACLE) DEPARTURE PROCEDURES

ORIG 20AUG15 (15232) (FAA)

#### TAKEOFF MINIMUMS:

**Rwy 35**, 400-1½ or std. w/min. climb of 475' per NM to 4200.

#### TAKEOFF OBSTACLE NOTES:

**Rwy 17**, vehicle 456' from DER, 622' right of centerline, up to 17' AGL/3646' MSL.

Power lines 2826' from DER, left and right of centerline, up to 80' AGL/3689' MSL.

**Rwy 35**, light support structure 10' from DER, 20' right of centerline, 6' AGL/3606' MSL.

Terrain 37' from DER, 477' left of centerline, 3606' MSL.

Vehicles and poles beginning 524' from DER, left and right of centerline, up to 26' AGL/3644' MSL.

Pole 1069' from DER, 579' left of centerline, 38' AGL/3638' MSL.

Tower 3233' from DER, 757' right of centerline, 120' AGL/3716' MSL.

Water tower 4329' from DER, 1263' left of centerline, 123' AGL/3738' MSL.

Towers beginning 1.1 NM from DER, 465' right of centerline, up to 400' AGL/3991' MSL.

# TAKEOFF MINIMUMS, (OBSTACLE) DEPARTURE PROCEDURES, AND DIVERSE VECTOR AREA (RADAR VECTORS)

24025

# TAKEOFF MINIMUMS, (OBSTACLE) DEPARTURE PROCEDURES, AND DIVERSE VECTOR AREA (RADAR VECTORS)

24025

## ULYSSES, KS

ULYSSES (ULS)

TAKEOFF MINIMUMS AND (OBSTACLE) DEPARTURE PROCEDURES

AMDT 2B 27JUN13 (13178) (FAA)

TAKEOFF MINIMUMS:

**Rwy 12**, 500-3 or std. with a min. climb of 292' per NM to 3700.

**Rwy 17**, 300-1¾ or std. w/ min. climb of 281' per NM to 3500.

DEPARTURE PROCEDURE:

**Rwy 17**, climb to 3700 before turning on course.

TAKEOFF OBSTACLE NOTES:

**Rwy 12**, antenna tower 4193' from DER, 1375' right of centerline, 164' AGL/3218' MSL.

**Rwy 17**, tower 1.38 NM from DER, 124' right of centerline, 249' AGL/3305' MSL.

## VALENTINE, NE

MILLER FLD (VTN)

TAKEOFF MINIMUMS AND (OBSTACLE) DEPARTURE PROCEDURES

AMDT 3 28FEB19 (21280) (FAA)

DEPARTURE PROCEDURE:

**Rwy 3**, climb heading 028° to 4000 before proceeding on course.

**Rwy 21**, climb heading 208° to 3300 before turning right.

**Rwy 32**, climb heading 317° to 4000 before proceeding on course.

TAKEOFF OBSTACLE NOTES:

**Rwy 3**, building 156' from DER, 421' left of centerline, 11' AGL/2595' MSL.

**Rwy 14**, terrain beginning 10' from DER, 353' right of centerline, up to 3' AGL/2586' MSL.

Electrical system 17' from DER, 488' left of centerline, 6' AGL/2585' MSL.

Electrical system, terrain beginning 41' from DER, 125' right of centerline, up to 5' AGL/2587' MSL.

Electrical system 42' from DER, 123' left of centerline, 6' AGL/2587' MSL.

Terrain beginning 150' from DER, 449' right of centerline, up to 5' AGL/2588' MSL.

Fence 184' from DER, 494' right of centerline, 7' AGL/2592' MSL.

Fence beginning 394' from DER, 341' right of centerline, up to 10' AGL/2593' MSL.

**Rwy 32**, trees beginning 16' from DER, 211' right of centerline, up to 17' AGL/2604' MSL.

Tree 400' from DER, 192' left of centerline, 15' AGL/2603' MSL.

Tower 411' from DER, 387' left of centerline, 15' AGL/2605' MSL.

Trees beginning 416' from DER, 185' left of centerline, up to 22' AGL/2610' MSL.

Tree, building, pole beginning 444' from DER, 219' left of centerline, up to 31' AGL/2620' MSL.

Pole, building, tree beginning 646' from DER, 331' left of centerline, up to 34' AGL/2623' MSL.

Tree 1472' from DER, 91' right of centerline, 47' AGL/2632' MSL.

Tree 1813' from DER, 630' right of centerline, 50' AGL/2636' MSL.

Tree 1992' from DER, 42' left of centerline, 56' AGL/2642' MSL.

Tree 2164' from DER, 451' right of centerline, 70' AGL/2656' MSL.

## WAHOO, NE

WAHOO MUNI (AHQ)

TAKEOFF MINIMUMS AND (OBSTACLE) DEPARTURE PROCEDURES

ORIG 31JUL08 (08213) (FAA)

TAKEOFF MINIMUMS:

**Rwys 13, 31**, NA-Environmental.

TAKEOFF OBSTACLE NOTES:

**Rwy 2**, terrain beginning 1' from DER, 360' left of centerline, up to 1229' MSL.

Terrain beginning 1' from DER, 360' right of centerline, up to 1224' MSL.

Pole 725' from DER, 539' left of centerline, 29' AGL/1258' MSL.

Vehicles on road beginning 740' from DER, from left to right of centerline, up to 15' AGL/1244' MSL.

**Rwy 20**, fence, buildings, trees, power poles, and street lights beginning 244' from DER, 401' right of centerline, up to 52' AGL/1277' MSL.

Vehicles on road, power poles, and wires beginning 500' from DER, 477' left of centerline, up to 29' AGL/1246' MSL.

Trees beginning 2510' from DER, 631' left of centerline, up to 74' AGL/1291' MSL.

Elevator 3446' from DER, 474' left of centerline, 114' AGL/1329' MSL.

22 FEB 2024 to 21 MAR 2024

22 FEB 2024 to 21 MAR 2024

# TAKEOFF MINIMUMS, (OBSTACLE) DEPARTURE PROCEDURES, AND DIVERSE VECTOR AREA (RADAR VECTORS)

24025

NC-2

# TAKEOFF MINIMUMS, (OBSTACLE) DEPARTURE PROCEDURES, AND DIVERSE VECTOR AREA (RADAR VECTORS)

24025

## WAKEENEY, KS

### TREGO WAKEENEY (0H1)

#### TAKEOFF MINIMUMS AND (OBSTACLE) DEPARTURE PROCEDURES

ORIG 10DEC15 (15344) (FAA)

##### TAKEOFF MINIMUMS:

**Rwy 35**, 300-1½ or std. w/min. climb of 262' per NM to 2800.

##### TAKEOFF OBSTACLE NOTES:

**Rwy 17**, poles beginning 15' from DER, 302' right of centerline, up to 29' AGL/2451' MSL.

Poles beginning 20' from DER, 299' left of centerline, up to 39' AGL/2450' MSL.

Vehicle on road 52' from DER, 202' left of centerline, 15' AGL/2436' MSL.

Vehicles on road beginning 48' from DER, 2' right of centerline, up to 15' AGL/2441' MSL.

Trees beginning 214' from DER, 54' right of centerline, up to 40' AGL/2460' MSL.

**Rwy 35**, signs beginning 482' from DER, 332' right of centerline, up to 80' AGL/2522' MSL.

Poles beginning 1113' from DER, 15' left of centerline, up to 31' AGL/2480' MSL.

Poles beginning 15' from DER, 159' right of centerline, up to 37' AGL/2481' MSL.

Building 199' from DER, 349' right of centerline, 19' AGL/2459' MSL.

Building 270' from DER, 559' right of centerline, 23' AGL/2469' MSL.

Building 426' from DER, 430' right of centerline, 22' AGL/2464' MSL.

Building 1621' from DER, 599' right of centerline, 59' AGL/2502' MSL.

Tower 6817' from DER, 1667' left of centerline, 200' AGL/2658' MSL.

Trees beginning 1' from DER, 135' left of centerline, up to 40' AGL/2444' MSL.

Trees beginning 1465' from DER, 109' right of centerline, up to 40' AGL/2478' MSL.

## WASHINGTON, KS

### WASHINGTON COUNTY VETERAN'S MEML (K38)

#### TAKEOFF MINIMUMS AND (OBSTACLE) DEPARTURE PROCEDURES

AMDT 1 30JAN20 (21112) (FAA)

##### TAKEOFF MINIMUMS:

**Rwy 17**, 300-1½ or std. w/min. climb of 469' per NM to 1900.

##### TAKEOFF OBSTACLE NOTES:

**Rwy 17**, vegetation 64' from DER, 486' right of centerline, 6' AGL/1431' MSL.

Pole, vehicle on road, trees beginning 80' from DER, 302' right of centerline, up to 40' AGL/1464' MSL.

Trees, poles beginning 523' from DER, 276' right of centerline, up to 1467' MSL.

Pole 1547' from DER, 473' left of centerline, 49' AGL/1469' MSL.

Pole 1634' from DER, 263' left of centerline, 49' AGL/1473' MSL.

Transmission line, catenary beginning 1638' from DER, 4' left of centerline, up to 59' AGL/1482' MSL.

Transmission line 1811' from DER, 167' right of centerline, 54' AGL/1475' MSL.

Transmission lines beginning 1932' from DER, 478' right of centerline, up to 57' AGL/1480' MSL.

Transmission lines beginning 2072' from DER, 798' right of centerline, up to 75' AGL/1499' MSL.

Grain elevator 5630' from DER, 1360' right of centerline, 255' AGL/1691' MSL.

**Rwy 35**, vegetation 8' from DER, 190' right of centerline, 1442' MSL.

Vegetation 45' from DER, 191' left of centerline, 1440' MSL.

Pole, vehicle on road beginning 118' from DER, 6' left of centerline, up to 33' AGL/1468' MSL.

Vehicle on road beginning 302' from DER, 143' right of centerline, up to 1451' MSL.

Pole 342' from DER, 493' left of centerline, 34' AGL/1470' MSL.

Poles beginning 588' from DER, 492' left of centerline, up to 34' AGL/1471' MSL.

## WAYNE, NE

### WAYNE MUNI/STAN MORRIS FLD (LCG)

#### TAKEOFF MINIMUMS AND (OBSTACLE) DEPARTURE PROCEDURES

AMDT 5 03JAN19 (22307) (FAA)

##### TAKEOFF MINIMUMS:

**Rwys 13, 31**, NA - Environmental.

**Rwy 18**, std. w/min. climb of 260' per NM to 2000 or 900-3 for VCOA.

**Rwy 23**, std. w/min. climb of 220' per NM to 2000 or 900-3 for VCOA.

**Rwy 5**, 300-1½ or std. w/min. climb of 330' per NM to 1700.

##### DEPARTURE PROCEDURE:

**Rwy 18**, climb heading 175° to 2000 before turning right.

**Rwy 23**, climb heading 228° to 2000 before turning right.

##### VCOA:

**Rwys 18, 23**, obtain ATC approval for VCOA when requesting IFR clearance. Climb in visual conditions to cross Wayne Muni/Stan Morris Fld at or above 2200 before proceeding on course.

##### TAKEOFF OBSTACLE NOTES:

**Rwy 5**, fence 39' from DER, 347' right of centerline, 7' AGL/1429' MSL.

Terrain 1961' from DER, 438' right of centerline, 1494' MSL.

Tree, pole beginning 2799' from DER, 441' left of centerline, up to 1507' MSL.

Tree, pole, tree, building beginning 4658' from DER, 170' right of centerline, up to 50' AGL/1619' MSL.

Tree 1.1 NM from DER, 2068' right of centerline, 50' AGL/1612' MSL.

**Rwy 18**, tree, terrain beginning 37' from DER, 274' left of centerline, up to 1446' MSL.

Vehicles on road 663' from DER, crossing centerline, up to 1455' MSL.

Tree beginning 5105' from DER, 1848' left of centerline, up to 50' AGL/1592' MSL.

CON'T

# TAKEOFF MINIMUMS, (OBSTACLE) DEPARTURE PROCEDURES, AND DIVERSE VECTOR AREA (RADAR VECTORS)

24025



# TAKEOFF MINIMUMS, (OBSTACLE) DEPARTURE PROCEDURES, AND DIVERSE VECTOR AREA (RADAR VECTORS)

24025

## WAYNE, NE (CON'T)

### WAYNE MUNI/STAN MORRIS FLD (LCG) (CON'T)

**Rwy 23**, tower, tree, building, pole beginning 113' from DER, 255' left of centerline, up to 57' AGL/1489' MSL.  
Tree, pole, general utility beginning 225' from DER, 271' right of centerline, up to 1478' MSL.  
Tree, pole, building beginning 788' from DER, 76' right of centerline, up to 1503' MSL.  
Trees beginning 945' from DER, 433' left of centerline, up to 1492' MSL.  
**Rwy 36**, tree 92' from DER, 293' left of centerline, 1438' MSL.  
Pole 385' from DER, 540' left of centerline, 31' AGL/1453' MSL.  
Pole 421' from DER, 436' right of centerline, 33' AGL/1453' MSL.

## WELLINGTON, KS

### WELLINGTON MUNI (EGT)

#### TAKEOFF MINIMUMS AND (OBSTACLE) DEPARTURE PROCEDURES

AMD T 1 13SEP18 (18256) (FAA)

#### TAKEOFF OBSTACLE NOTES:

**Rwy 18**, lighting 10' from DER, 31' left of centerline, 1' AGL/1272' MSL.  
Terrain 79' from DER, 477' right of centerline, 1274' MSL.  
Terrain 104' from DER, 488' right of centerline, 1275' MSL.  
**Rwy 36**, road 296' from DER, 340' left of centerline, 1288' MSL.

## WICHITA, KS

### BEECH FACTORY (BEC)

#### TAKEOFF MINIMUMS AND (OBSTACLE) DEPARTURE PROCEDURES

AMD T 1 22AUG13 (13234) (FAA)

#### TAKEOFF OBSTACLE NOTES:

**Rwy 1**, runway lights 9' from DER, 90' left of centerline, 3' AGL/1410' MSL.  
Runway lights 10' from DER, 89' right of centerline, 2' AGL/1409' MSL.  
Trees beginning 176' from DER, 89' right of centerline, up to 38' AGL/1439' MSL.  
Trees beginning 1731' from DER, 22' right of centerline, up to 55' AGL/1455' MSL.  
**Rwy 19**, runway lights 8' from DER, 89' left of centerline, 3' AGL/1373' MSL.  
Runway lights 9' from DER, 90' right of centerline, 3' AGL/1372' MSL.  
Light 10' from DER, 30' left of centerline, 2' AGL/1373' MSL.  
Trees beginning 2687' from DER, 1027' right of centerline, up to 67' AGL/1443' MSL.

### COLONEL JAMES JABARA (AAO)

#### TAKEOFF MINIMUMS AND (OBSTACLE) DEPARTURE PROCEDURES

AMD T 2 24NOV83 (83328) (FAA)

#### DEPARTURE PROCEDURE:

**Rwy 18**, south and west departures (180° CW 270°) climb to 2000 via runway heading before proceeding on course.

### WICHITA DWIGHT D EISENHOWER NTL (ICT)

#### TAKEOFF MINIMUMS AND (OBSTACLE) DEPARTURE PROCEDURES

ORIG-C 29MAR18 (21112) (FAA)

#### TAKEOFF MINIMUMS:

**Rwy 32**, std. w/ min. climb of 203' per NM to 3000.

#### TAKEOFF OBSTACLE NOTES:

**Rwy 1L**, tree and poles beginning 1219' from DER, 679' left of centerline, up to 34' AGL/1366' MSL.  
**Rwy 14**, antenna tower 2651' from DER, 1205' right of centerline, 85' AGL/1417' MSL.

## WINFIELD-ARKANSAS CITY, KS

### STROTHER FLD (WLD)

#### TAKEOFF MINIMUMS AND (OBSTACLE) DEPARTURE PROCEDURES

ORIG 10MAR11 (21112) (FAA)

#### TAKEOFF OBSTACLE NOTES:

**Rwy 13**, trees beginning 1939' from DER, 785' left of centerline, up to 100' AGL/1249' MSL.  
**Rwy 31**, trees beginning 1649' from DER, 59' left of centerline, up to 100' AGL/1264' MSL.  
**Rwy 35**, trees beginning 821' from DER, 674' right of centerline, up to 100' AGL/1254' MSL.

## YORK, NE

### YORK MUNI (JYR)

#### TAKEOFF MINIMUMS AND (OBSTACLE) DEPARTURE PROCEDURES

AMD T 1 27AUG09 (09239) (FAA)

#### TAKEOFF MINIMUMS:

**Rwys 5, 23**, NA-Environmental.

#### TAKEOFF OBSTACLE NOTES:

**Rwy 35**, Catenary beginning 1290' from DER, 467' right of centerline, up to 79' AGL/1719' MSL.  
Pole 1396' from DER, 220' left of centerline, 55' AGL/1700' MSL.

# TAKEOFF MINIMUMS, (OBSTACLE) DEPARTURE PROCEDURES, AND DIVERSE VECTOR AREA (RADAR VECTORS)

24025

NC-2