

BRAYMER EIGHT ARRIVAL
(BQS, BQS8) 20APR23

BRAYMER EIGHT ARRIVAL
(BQS, BQS8) 23Z78

AL-780 (FAA)

KANSAS CITY, MISSOURI

KANSAS CITY APP CON
120.95 318.1
MCI D-ATIS
128.375
MKC ATIS
120.75
OJC ATIS
119.35
STJ ATIS
125.05

LAMONI
116.7 LMN
Chan 114

RADAR required.

KIRKSVILLE
114.6 IRK
Chan 93

DONNS
12000
KMCI Ldg Rwys 9, 19L/R, 27
Ldg KFLV/KGPH/KIXD/
KLXT/KMKC/KOJC/KSTJ

BRAYMER
115.35 BQS
Chan 100(Y)
14000
12000

FL190
*2300
269
(120)

SPINNER
112.7 SPI
Chan 74

HALLSVILLE
114.2 HLV
Chan 89

NAPOLEON
114.0 ANX
Chan 87

ROSECRANS
MEML

SHERMAN AAF

KANSAS CITY
INTL

BYGEC
12000 210K
KMCI Ldg
Rwys 1L/R

MIDWEST
NTL
AIR CENTER

CHARLES B WHEELER
DOWNTOWN

LEE'S SUMMIT MUNI

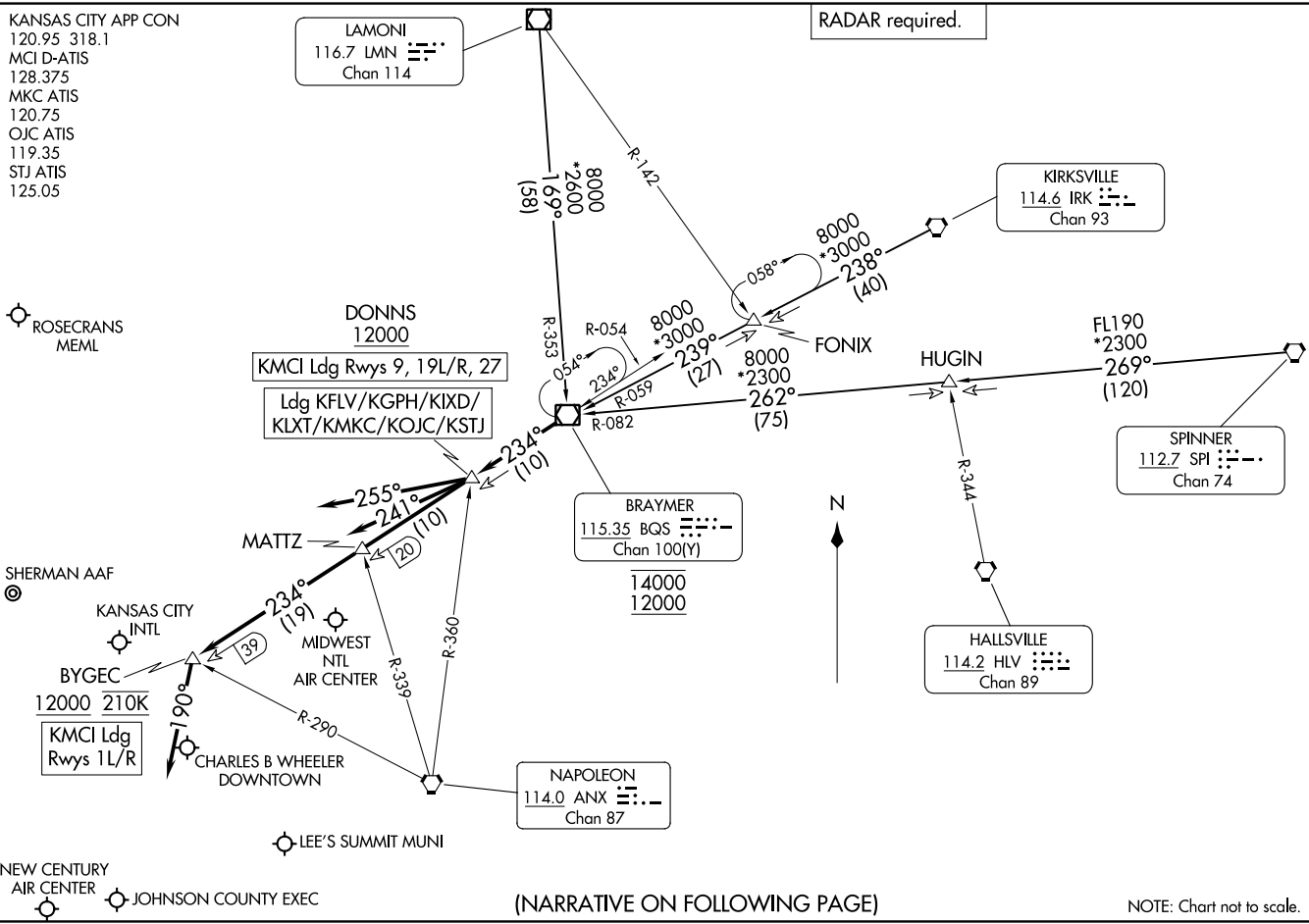
NEW CENTURY
AIR CENTER

JOHNSON COUNTY EXEC



(NARRATIVE ON FOLLOWING PAGE)

NOTE: Chart not to scale.



ARRIVAL ROUTE DESCRIPTION

KIRKSVILLE TRANSITION (IRK.BQS8): From over IRK VORTAC on IRK R-238 to FONIX, then on BQS R-059 to BQS VOR/DME. Thence. . . .

LAMONI TRANSITION (LMN.BQS8): From over LMN VOR/DME on LMN R-169 and BQS R-353 to BQS VOR/DME. Thence. . . .

SPINNER TRANSITION (SPI.BQS8): From over SPI VORTAC on SPI R-269 to HUGIN, then on BQS R-082 to BQS VOR/DME. Thence. . . .

LANDING KMCI RUNWAYS 1L/R: From over BQS VOR/DME on BQS R-234 to cross BYGEC at or above 12000 and at 210K, then on heading 190°. Expect RADAR vectors to final approach course.

LANDING KMCI RUNWAYS 9, 19L/R, 27: From over BQS VOR/DME on BQS R-234 to cross DONNS at or above 12000, then on heading 255°. Expect RADAR vectors to final approach course.

LANDING KFLV/KGPH/KIXD/KLXT/KMKC/KOJC/KSTJ: From over BQS VOR/DME on BQS R-234 to cross DONNS at or above 12000, then on heading 241°. Expect RADAR vectors to final approach course.

NC-3, 22 FEB 2024 to 21 MAR 2024

NC-3, 22 FEB 2024 to 21 MAR 2024

JHAWK SEVEN ARRIVAL

AL-780 (FAA)

KANSAS CITY, MISSOURI

KANSAS CITY APP CON
 120.95 318.1
 MCI D-ATIS
 128.375
 MKC ATIS
 120.75
 OJC ATIS
 119.35
 STJ ATIS
 125.05

RADAR required.

ROSECRANS
 MEML

KANSAS CITY
 113.25 MCI
 Chan 79(Y)

TOPEKA
 117.8 TOP
 Chan 125

RUGBB
 Turbojets landing south:
 Expect 12000

SHERMAN
 AAF

MIDWEST NTL
 AIR CENTER

KANSAS CITY
 INTL

CHARLES B WHEELER
 DOWNTOWN

LEE'S SUMMIT MUNI

NEW CENTURY
 AIR CENTER

JOHNSON COUNTY
 EXEC



HOOZE

NOAHS
 210K

JHAWK
 Turbojets landing north:
 Expect 12000

EMPORIA
 112.8 EMP
 Chan 75



CHANUTE
 109.2 CNU
 Chan 29

ARRIVAL ROUTE DESCRIPTION

CHANUTE TRANSITION (CNU.JHAWK7): From over CNU VOR/DME on CNU R-002 to JHAWK. Thence. . .

EMPORIA TRANSITION (EMP.JHAWK7): From over EMP VORTAC on EMP R-039 and MCI R-223 to JHAWK. Thence. . .

LANDING KANSAS CITY INTL (MCI):

RUNWAYS 19L/R: From over JHAWK on MCI R-223 to NOAHS then on heading 010°. Thence. . .

RUNWAYS 1L/R: From over JHAWK on MCI R-223 to HOOZE then on heading 060°. Thence. . .

RUNWAYS 9, 27: From over JHAWK on MCI R-223 to HOOZE. Thence. . .

LANDING CHARLES B WHEELER DOWNTOWN (MKC):

RUNWAYS 1, 4: From over JHAWK on MCI R-223 to HOOZE. Thence. . .

RUNWAYS 19, 22: From over JHAWK on MCI R-223 to NOAHS then on heading 010°. Thence. . .

LANDING ROSECRANS MEML (STJ) AND SHERMAN AAF (FLV):

From over JHAWK on MCI R-223 to NOAHS then on heading 010°. Thence. . .

ALL OTHER AIRPORTS: From over JHAWK on MCI R-223 to HOOZE. Thence. . .

. . . .expect RADAR vectors to final approach course.

NOTE: Chart not to scale.

NC-3, 22 FEB 2024 to 21 MAR 2024

NC-3, 22 FEB 2024 to 21 MAR 2024

JHAWK SEVEN ARRIVAL

(JHAWK.JHAWK7) 05OCT23

KANSAS CITY, MISSOURI

JSONN FOUR ARRIVAL (RNAV) Transition Routes
(JSONN.JSONN4) 10AUG23

(JSONN.JSONN4) 23222
JSONN FOUR ARRIVAL (RNAV) Transition Routes

AL-780 (FAA)

KANSAS CITY INTL (MCI)
KANSAS CITY, MISSOURI

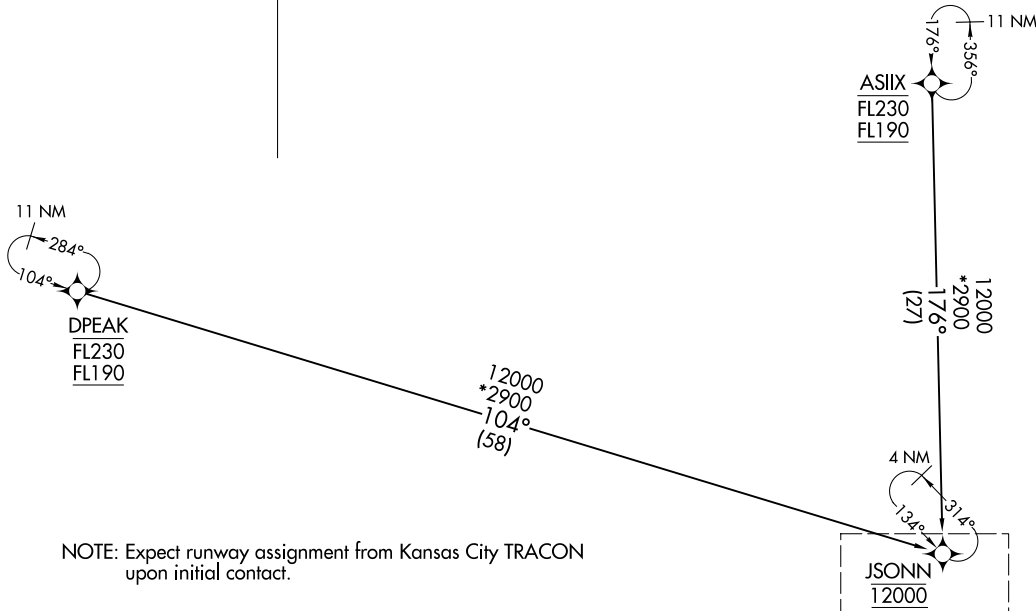
KANSAS CITY APP CON
120.95 318.1
D-ATIS
128.375

RNAV 1 - DME/DME/ IRU or GPS.

RADAR required.

ASIX TRANSITION (ASIX.JSONN4)

DPEAK TRANSITION (DPEAK.JSONN4)



NOTE: Expect runway assignment from Kansas City TRACON upon initial contact.

NOTE: Chart not to scale.

(CONTINUED ON FOLLOWING PAGE)

See following page for arrival routes

KANSAS CITY, MISSOURI
KANSAS CITY INTL (MCI)

RNAV 1 - DME/DME/ IRU or GPS.
RADAR required.

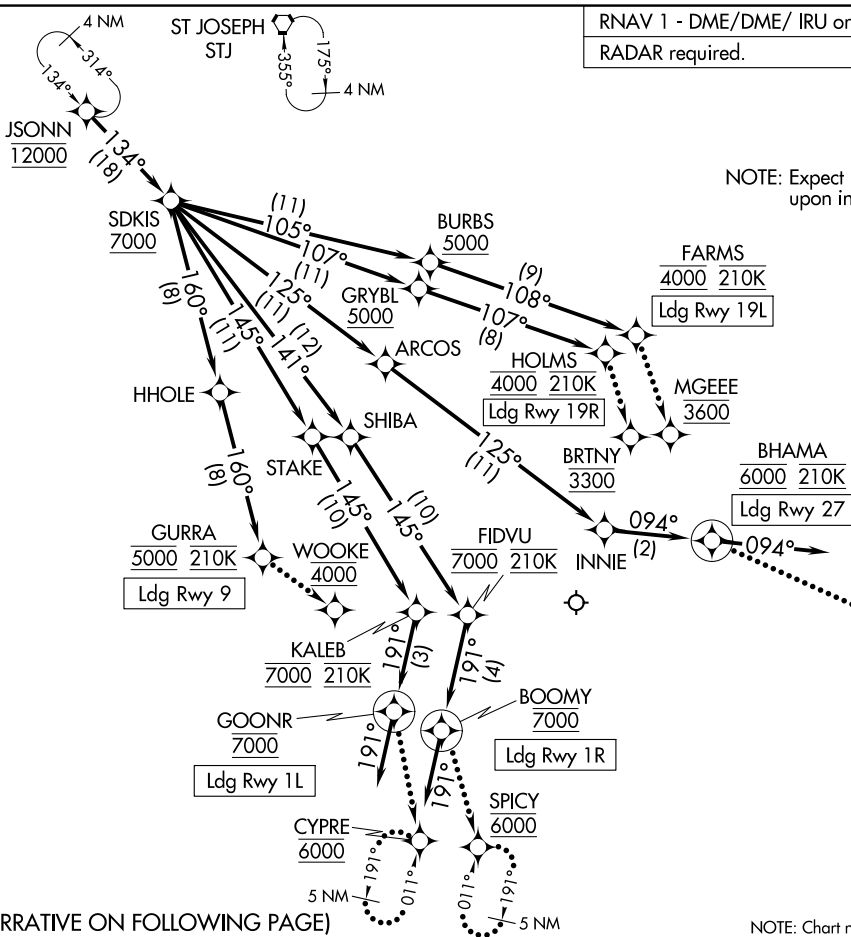
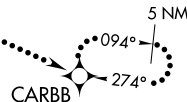
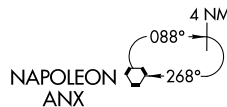
KANSAS CITY APP CON
120.95 318.1
D-ATIS
128.375

(JSONN,JSONN4) 23222

AL-780 (FAA)

KANSAS CITY INTL (MCI)
KANSAS CITY, MISSOURI

NOTE: Expect runway assignment from Kansas City TRACON upon initial contact.



JSONN
12000

SDKIS
7000

BURBS
5000

FARM
4000 210K
Ldg Rwy 19L

GRYBL
5000

HOLMS
4000 210K
Ldg Rwy 19R

MGEER
3600

BHAMA
6000 210K
Ldg Rwy 27

HHOLE

STAKE

BRTNY
3300

INNIE

GURRA
5000 210K
Ldg Rwy 9

WOOKE
4000

FIDVU
7000 210K

GOONR
7000
Ldg Rwy 1L

BOOMY
7000
Ldg Rwy 1R

KALEB
7000 210K

SPICY
6000

CYPRE
6000

(NARRATIVE ON FOLLOWING PAGE)

NOTE: Chart not to scale.

JSONN FOUR ARRIVAL (RNAV) Arrival Routes
(JSONN,JSONN4) 10AUG23

KANSAS CITY, MISSOURI
KANSAS CITY INTL (MCI)

ARRIVAL ROUTE DESCRIPTION

From JSONN on track 134° to cross SDKIS at or above 7000.

LANDING RUNWAY 1L: From SDKIS on track 145° to STAKE, then on track 145° to cross KALEB at 7000 and at 210K, then on track 191° to cross GOONR at 7000, then on track 191°. Expect RADAR vectors to final approach course for RNP, GPS, or ILS RWY 1L approach.

LANDING RUNWAY 1R: From SDKIS on track 141° to SHIBA, then on track 145° to cross FIDVU at 7000 and at 210K, then on track 191° to cross BOOMY at 7000, then on track 191°. Expect RADAR vectors to final approach course for RNP, GPS, or ILS RWY 1R approach.

LANDING RUNWAY 9: From SDKIS on track 160° to HHOLE, then on track 160° to cross GURRA at 5000 and at 210K. Expect RNP Z RWY 9 approach, or expect RADAR vectors to final approach course for ILS or GPS RWY 9 approaches.

LANDING RUNWAY 19L: From SDKIS on track 105° to cross BURBS at or above 5000, then on track 108° to cross FARMS at 4000 and at 210K. Expect RNP Z RWY 19L approach, or expect RADAR vectors to final approach course for ILS or GPS RWY 19L approaches.

LANDING RUNWAY 19R: From SDKIS on track 107° to cross GRYBL at or above 5000, then on track 107° to cross HOLMS at 4000 and at 210K. Expect RNP Z RWY 19R approach, or expect RADAR vectors to final approach course for ILS or GPS RWY 19R approaches.

LANDING RUNWAY 27: From SDKIS on track 125° to ARCOS, then on track 125° to INNIE, then on track 094° to cross BHAMA at 6000 and at 210K, then on track 094°. Expect RADAR vectors to final approach course for RNP, GPS, or ILS RWY 27 approach.

LOST COMMUNICATIONS

RUNWAY 1L: After GOONR proceed to CYPRE at 6000 and hold.

RUNWAY 1R: After BOOMY proceed to SPICY at 6000 and hold.

RUNWAY 9: After GURRA proceed to WOOKIE at 4000, then on ILS or LOC RWY 9 approach.

RUNWAY 19L: After FARMS proceed to MGEEE at 3600, then on ILS or LOC RWY 19L approach.

RUNWAY 19R: After HOLMS proceed to BRTNY at 3300, then on ILS or LOC RWY 19R approach.

RUNWAY 27: After BHAMA maintain 6000, proceed to CARBB and hold.

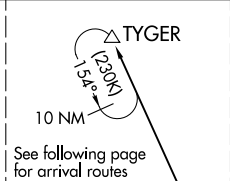
NC-3, 22 FEB 2024 to 21 MAR 2024

NC-3, 22 FEB 2024 to 21 MAR 2024

MHOMS THREE ARRIVAL (RNAV) Transition Routes

RNAV 1 - DME/DME/IRU or GPS.
RADAR required.

KANSAS CITY APP CON
120.95 318.1
D-ATIS
128.375



10000
*2700
334°
(27)

FLTCH

10000
*2700
334°
(110)

KRAZO

10000
*2700
334°
(113)

NELVY

10000
*2700
334°
(37)

KRTNY

NOTE: Expect runway assignment from Kansas City TRACON upon initial contact.

NOTE: Chart not to scale.

KRTNY TRANSITION (KRTNY.MHOMS3)

NELVY TRANSITION (NELVY.MHOMS3)

(CONTINUED ON FOLLOWING PAGE)

MHOMS THREE ARRIVAL (RNAV) Transition Routes

(TYGER.MHOMS3) 23222

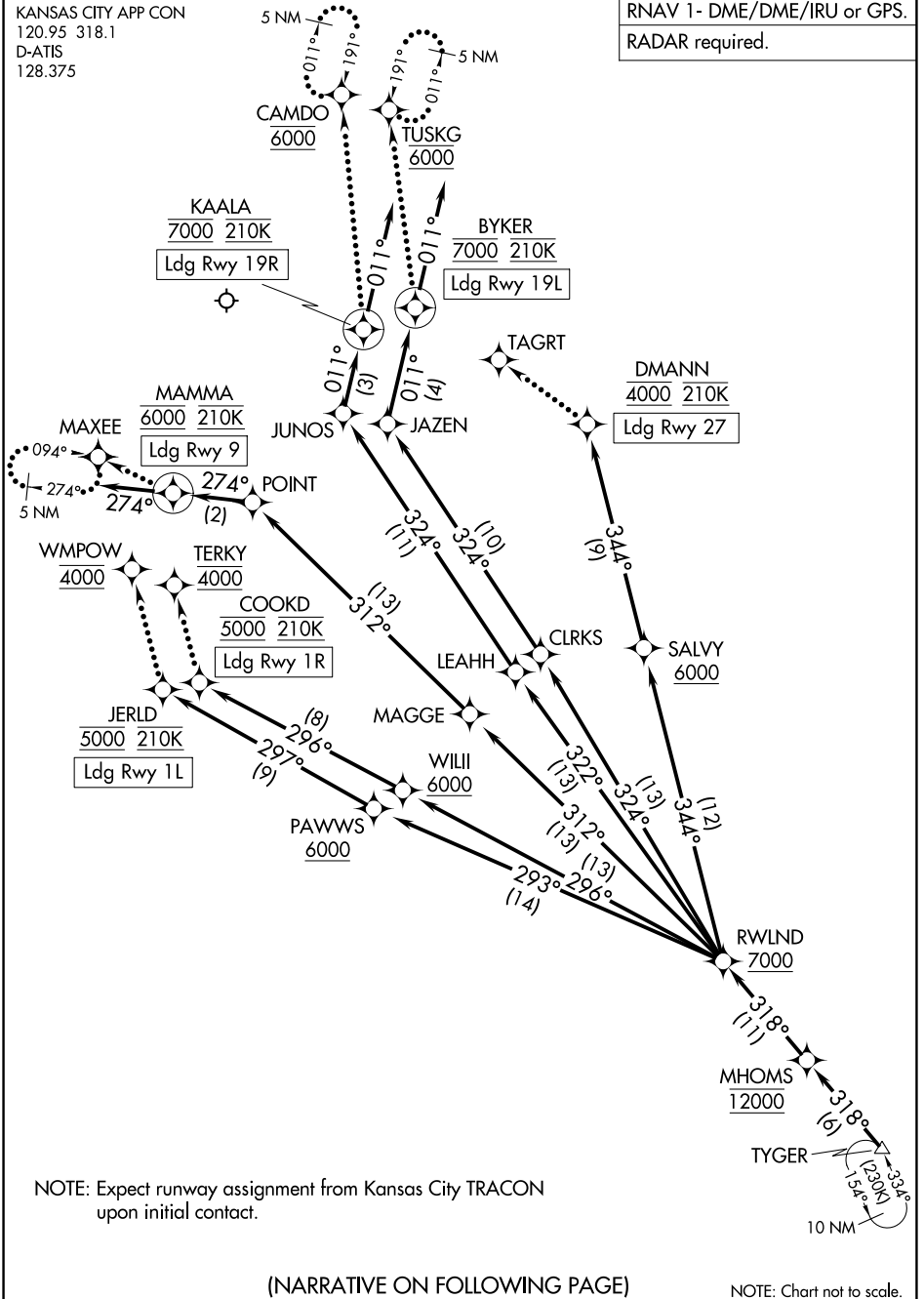
AL-780 (FAA)

KANSAS CITY INTL (MCI)
KANSAS CITY, MISSOURI

MHOMS THREE ARRIVAL (RNAV) Arrival Routes

KANSAS CITY APP CON
120.95 318.1
D-ATIS
128.375

RNAV 1- DME/DME/IRU or GPS.
RADAR required.



NC-3, 22 FEB 2024 to 21 MAR 2024

NC-3, 22 FEB 2024 to 21 MAR 2024

NOTE: Expect runway assignment from Kansas City TRACON upon initial contact.

(NARRATIVE ON FOLLOWING PAGE)

NOTE: Chart not to scale.

MHOMS THREE ARRIVAL (RNAV) Arrival Routes

KANSAS CITY, MISSOURI
KANSAS CITY INTL (MCI)

(TYGER.MHOMS3) 10AUG23

ARRIVAL ROUTE DESCRIPTION

From TYGER on track 318° to cross MHOMS at 12000, then on track 318° to cross RWLND at or above 7000.

LANDING RUNWAY 1L: From RWLND on track 293° to cross PAWWS at or above 6000, then on track 297° to cross JERLD at 5000 and at 210K. Expect RNP Z RWY 1L approach, or expect RADAR vectors to final approach course for ILS or GPS RWY 1L approaches.

LANDING RUNWAY 1R: From RWLND on track 296° to cross WILII at or above 6000, then on track 296° to cross COOKD at 5000 and at 210K. Expect RNP Z RWY 1R approach, or expect RADAR vectors to final approach course for ILS or GPS RWY 1R approaches.

LANDING RUNWAY 9: From RWLND on track 312° to MAGGE, then on track 312° to POINT, then on track 274° to cross MAMMA at 6000 and at 210K, then on track 274°. Expect RADAR vectors to final approach course for RNP, GPS, or ILS RWY 9 approach.

LANDING RUNWAY 19L: From RWLND on track 324° to CLRKS, then on track 324° to JAZEN, then on track 011° to cross BYKER at 7000 and at 210K, then on track 011°. Expect RADAR vectors to final approach course for RNP, GPS, or ILS RWY 19L approach.

LANDING RUNWAY 19R: From RWLND on track 322° to LEAHH, then on track 324° to JUNOS, then on track 011° to cross KAALA at 7000 and at 210K, then on track 011°. Expect RADAR vectors to final approach course for RNP, GPS, or ILS RWY 19R approach.

LANDING RUNWAY 27: From RWLND on track 344° to cross SALVY at or above 6000, then on track 344° to cross DMANN at 4000 and at 210K. Expect RNP Z RWY 27 approach, or expect RADAR vectors to final approach course for ILS or GPS RWY 27 approaches.

LOST COMMUNICATIONS

RUNWAY 1L: After JERLD proceed to WMPOW at 4000, then on ILS or LOC RWY 1L approach.

RUNWAY 1R: After COOKD proceed to TERKY at 4000, then on ILS or LOC RWY 1R approach.

RUNWAY 9: After MAMMA maintain 6000, proceed to MAXEE and hold.

RUNWAY 19L: After BYKER proceed to TUSKG at 6000 and hold.

RUNWAY 19R: After KAALA proceed to CAMDO at 6000 and hold.

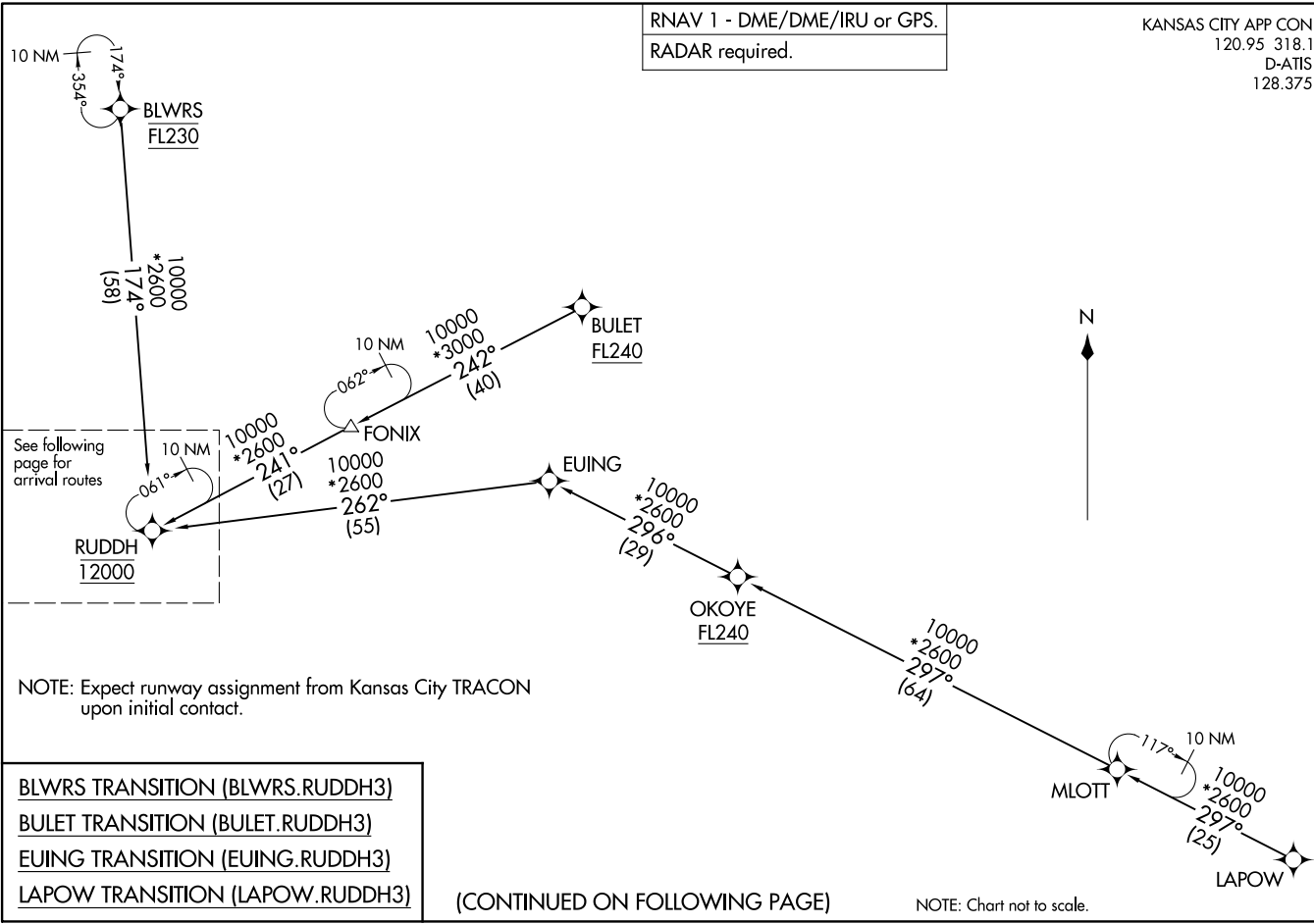
RUNWAY 27: After DMANN maintain 4000, proceed to TAGRT, then on ILS or LOC RWY 27 approach.

RNAV 1 - DME/DME/IRU or GPS.
RADAR required.

KANSAS CITY APP CON
120.95 318.1
D-ATIS
128.375

(RUDDH.RUDDH3) 23222
RUDDH THREE ARRIVAL (RNAV) Transition Routes
AL-780 (FAA)

KANSAS CITY INTL (MCI)
KANSAS CITY, MISSOURI



See following page for arrival routes

NOTE: Expect runway assignment from Kansas City TRACON upon initial contact.

- BLWRS TRANSITION (BLWRS.RUDDH3)
- BULET TRANSITION (BULET.RUDDH3)
- EUING TRANSITION (EUING.RUDDH3)
- LAPOW TRANSITION (LAPOW.RUDDH3)

(CONTINUED ON FOLLOWING PAGE)

NOTE: Chart not to scale.

(RUDDH.RUDDH3) 10AUG23
RUDDH THREE ARRIVAL (RNAV) Transition Routes

KANSAS CITY, MISSOURI
KANSAS CITY INTL (MCI)

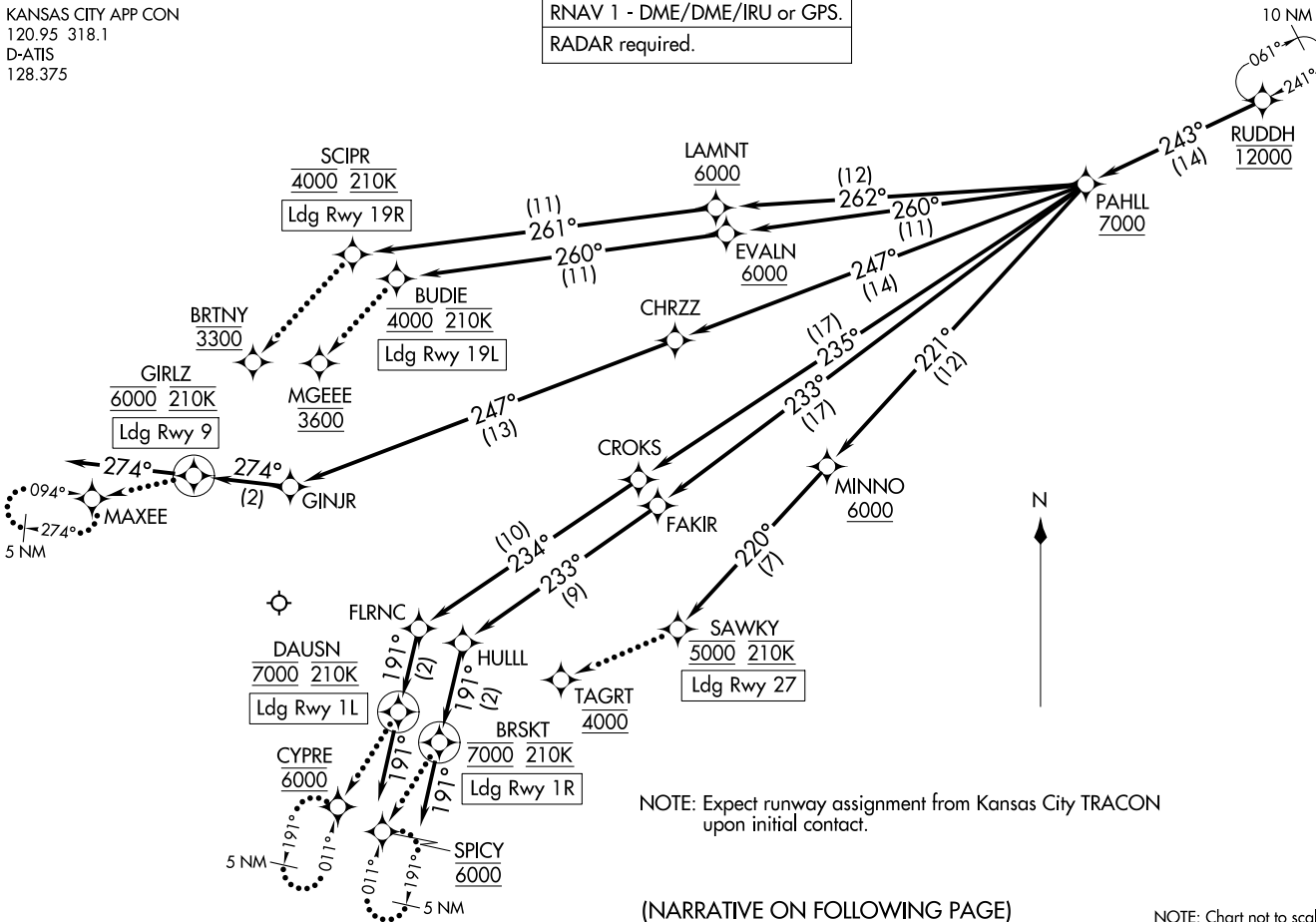
RNAV 1 - DME/DME/IRU or GPS.
RADAR required.

KANSAS CITY APP CON
120.95 318.1
D-ATIS
128.375

RUDDH THREE ARRIVAL (RNAV) (RUDDH, RUDDH3) 10 AUG 23

Arrival Routes

KANSAS CITY, MISSOURI
KANSAS CITY INTL (MCI)



NOTE: Expect runway assignment from Kansas City TRACON upon initial contact.

(NARRATIVE ON FOLLOWING PAGE)

NOTE: Chart not to scale.

(RUDDH, RUDDH3) 23222

Arrival Routes

KANSAS CITY INTL (MCI)
KANSAS CITY, MISSOURI

AL-780 (FAA)

ARRIVAL ROUTE DESCRIPTION

From RUDDH on track 243° to cross PAHLL at or above 7000.

LANDING RUNWAY 1L: From PAHLL on track 235° to CROKS, then on track 234° to FLRNC, then on track 191° to cross DAUSN at 7000 and at 210K, then on track 191°. Expect RADAR vectors to final approach course for RNP, GPS, or ILS RWY 1L approach.

LANDING RUNWAY 1R: From PAHLL on track 233° to FAKIR, then on track 233° to HULLL, then on track 191° to cross BRSKT at 7000 and at 210K, then on track 191°. Expect RADAR vectors to final approach course for RNP, GPS, or ILS RWY 1R approach.

LANDING RUNWAY 9: From PAHLL on track 247° to CHRZZ, then on track 247° to GINJR, then on track 274° to cross GIRLZ at 6000 and at 210K, then on track 274°. Expect RADAR vectors to final approach course for RNP, GPS, or ILS RWY 9 approach.

LANDING RUNWAY 19L: From PAHLL on track 260° to cross EVALN at or above 6000, then on track 260° to cross BUDIE at 4000 and at 210K. Expect RNP Z RWY 19L approach, or expect RADAR vectors to final approach course for ILS or GPS RWY 19L approaches.

LANDING RUNWAY 19R: From PAHLL on track 262° to cross LAMNT at or above 6000, then on track 261° to cross SCIPR at 4000 and at 210K. Expect RNP Z RWY 19R approach, or expect RADAR vectors to final approach course for ILS or GPS RWY 19R approaches.

LANDING RUNWAY 27: From PAHLL on track 221° to cross MINNO at or above 6000, then on track 220° to cross SAWKY at 5000 and at 210K. Expect RNP Z RWY 27 approach, or expect RADAR vectors to final approach course for ILS or GPS RWY 27 approaches.

LOST COMMUNICATIONS

RUNWAY 1L: After DAUSN proceed to CYPRE at 6000 and hold.

RUNWAY 1R: After BRSKT proceed to SPICY at 6000 and hold.

RUNWAY 9: After GIRLZ maintain 6000, proceed to MAXEE and hold.

RUNWAY 19L: After BUDIE proceed to MGEEE at 3600, then on ILS or LOC RWY 19L approach.

RUNWAY 19R: After SCIPR proceed to BRTNY at 3300, then on ILS or LOC RWY 19R approach.

RUNWAY 27: After SAWKY proceed to TAGRT at 4000, then on ILS or LOC RWY 27 approach.

NC-3, 22 FEB 2024 to 21 MAR 2024

NC-3, 22 FEB 2024 to 21 MAR 2024

TYGER SEVEN ARRIVAL

AL-780 (FAA)

KANSAS CITY, MISSOURI

RADAR required.

- KANSAS CITY APP CON 120.95 318.1
- MCI D-ATIS 128.375
- MKC ATIS 120.75
- OJC ATIS 119.35
- STJ ATIS 125.05

ROSECRANS MEML

KANSAS CITY
113.25 MCI Chan 79(Y)

MIDWEST NTL AIR CENTER

NAPOLEON
114.0 ANX Chan 87

BUTLER
115.9 BUM Chan 106

SPRINGFIELD
116.9 SGF Chan 116

SHERMAN AAF

KANSAS CITY INTL

SLABB 210K

CHARLES B WHEELER DOWNTOWN

LEE'S SUMMIT MUNI

MORAY
Turbojets Landing South:
Expect 12000

NEW CENTURY AIR CENTER

JOHNSON COUNTY EXEC

TRIKE

TYGER
Turbojets Landing north:
Expect 12000

KRAZO

NOTE: Chart not to scale.

(NARRATIVE ON FOLLOWING PAGE)

NC-3, 22 FEB 2024 to 21 MAR 2024

NC-3, 22 FEB 2024 to 21 MAR 2024

TYGER SEVEN ARRIVAL

KANSAS CITY, MISSOURI

ARRIVAL ROUTE DESCRIPTION

SPRINGFIELD TRANSITION (SGF.TYGER7): From over SGF VORTAC on SGF R-332 to TYGER. Thence. . . .

LANDING KANSAS CITY INTL (MCI):

RUNWAYS 19L/R: From over TYGER on MCI R-135 to SLABB then on heading 010°. Thence. . . .

RUNWAYS 1L/R: From over TYGER on MCI R-135 to TRIKE then on heading 290°. Thence. . . .

RUNWAYS 9, 27: From over TYGER on MCI R-135 to TRIKE. Thence. . . .

LANDING CHARLES B WHEELER DOWNTOWN (MKC):

RUNWAYS 1, 4: From over TYGER on MCI R-135 to TRIKE. Thence. . . .

RUNWAYS 19, 22: From over TYGER on MCI R-135 to SLABB then on heading 010°. Thence. . . .

LANDING ROSECRANS MEML (STJ) and SHERMAN AAF (FLV): From over TYGER on MCI R-135 to SLABB then on heading 010°. Thence. . . .

ALL OTHER AIRPORTS: From over TYGER on MCI R-135 to TRIKE. Thence. . . .

. . . .expect RADAR vectors to final approach course.

NC-3, 22 FEB 2024 to 21 MAR 2024

NC-3, 22 FEB 2024 to 21 MAR 2024

(WUTNG.WUTNG3) 23222

AL-780 (FAA)

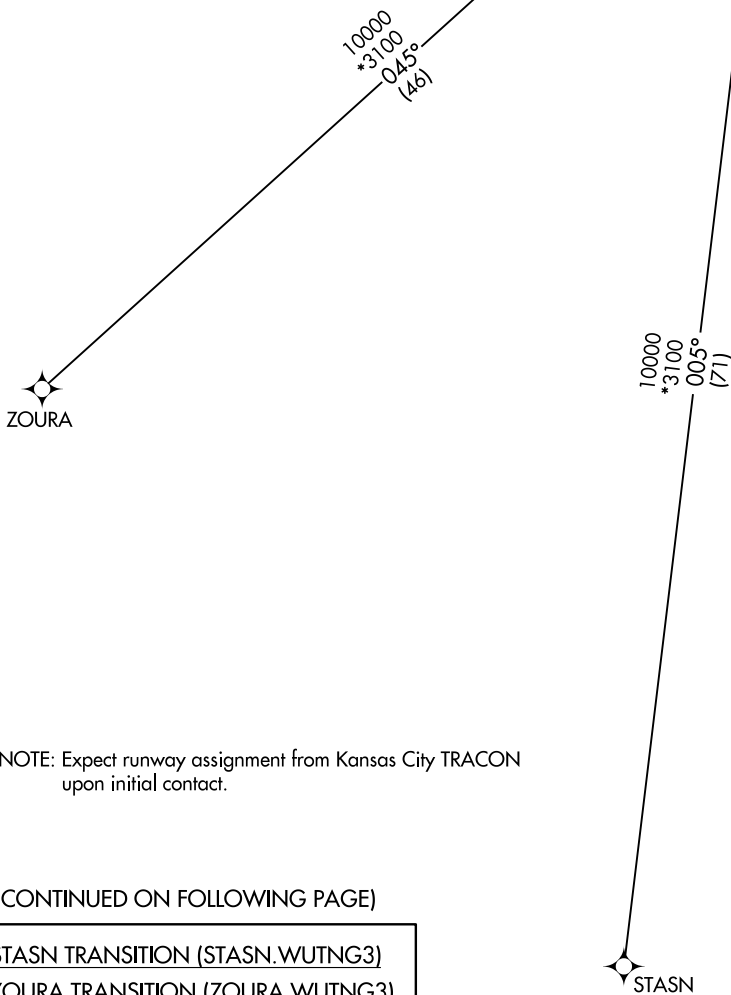
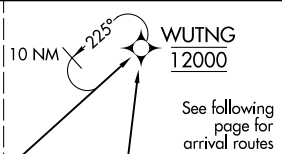
KANSAS CITY INTL (MCI)
KANSAS CITY, MISSOURI

WUTNG THREE ARRIVAL (RNAV) Transition Routes

KANSAS CITY APP CON
120.95 318.1
D-ATIS
128.375

RNAV 1 - DME/DME/IRU or GPS.

RADAR required.



NOTE: Expect runway assignment from Kansas City TRACON upon initial contact.

(CONTINUED ON FOLLOWING PAGE)

STASN TRANSITION (STASN.WUTNG3)

ZOURA TRANSITION (ZOURA.WUTNG3)

NOTE: Chart not to scale.

WUTNG THREE ARRIVAL (RNAV) Transition Routes

(WUTNG.WUTNG3) 10AUG23

KANSAS CITY, MISSOURI
KANSAS CITY INTL (MCI)

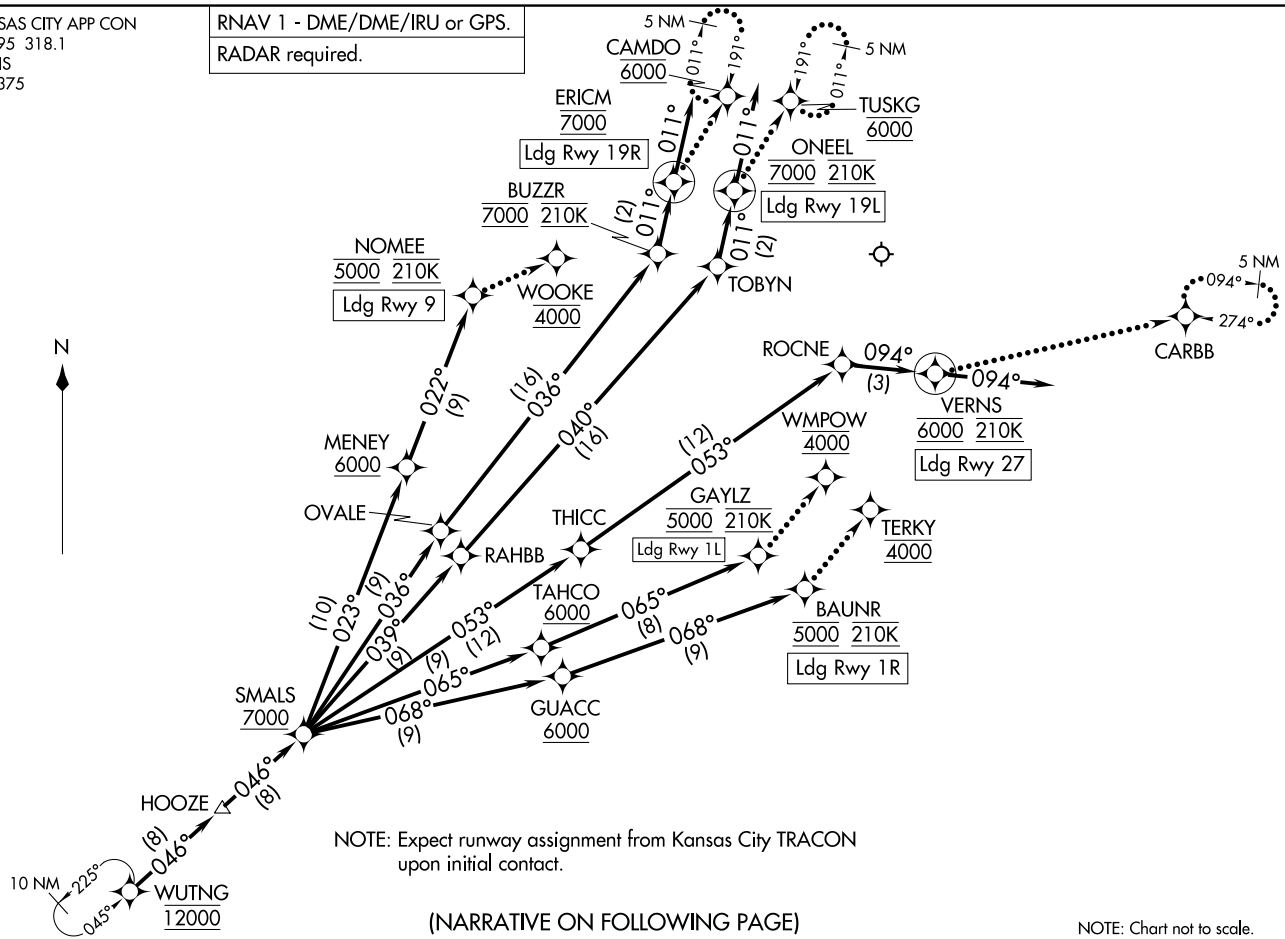
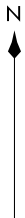
NC-3, 22 FEB 2024 to 21 MAR 2024

NC-3, 22 FEB 2024 to 21 MAR 2024

WUTUNG THREE ARRIVAL (RNAV) Arrival Routes
(WUTUNG.WUTNG3) 10AUG23

KANSAS CITY APP CON
120.95 318.1
D-ATIS
128.375

RNAV 1 - DME/DME/IRU or GPS.
RADAR required.



NOTE: Expect runway assignment from Kansas City TRACON upon initial contact.

(NARRATIVE ON FOLLOWING PAGE)

NOTE: Chart not to scale.

WUTUNG THREE ARRIVAL (RNAV) Arrival Routes
(WUTUNG.WUTNG3) 23222

KANSAS CITY INTL (MCI)
KANSAS CITY, MISSOURI
AL-780 (FAA)

ARRIVAL ROUTE DESCRIPTION

From WUTNG on track 046° to HOOZE, then on track 046° to cross SMALS at or above 7000.

LANDING RUNWAY 1L: From SMALS on track 065° to cross TAHCO at or above 6000, then on track 065° to cross GAYLZ at 5000 and at 210K. Expect RNP Z RWY 1L approach, or expect RADAR vectors to final approach course for ILS or GPS RWY 1L approaches.

LANDING RUNWAY 1R: From SMALS on track 068° to cross GUACC at or above 6000, then on track 068° to cross BAUNR at 5000 and at 210K. Expect RNP Z RWY 1R approach, or expect RADAR vectors to final approach course for ILS or GPS RWY 1R approaches.

LANDING RUNWAY 9: From SMALS on track 023° to cross MENEY at or above 6000, then on track 022° to cross NOMEY at 5000 and at 210K. Expect RNP Z RWY 9 approach, or expect RADAR vectors to final approach course for ILS or GPS RWY 9 approaches.

LANDING RUNWAY 19L: From SMALS on track 039° to RAHBB, then on track 040° to TOBYN, then on track 011° to cross ONEEL at 7000 and at 210K, then on track 011°. Expect RADAR vectors to final approach course for RNP, GPS, or ILS RWY 19L approach.

LANDING RUNWAY 19R: From SMALS on track 036° to OVALE, then on track 036° to cross BUZZR at 7000 and at 210K, then on track 011° to cross ERICM at 7000, then on track 011°. Expect RADAR vectors to final approach course for RNP, GPS, or ILS RWY 19R approach.

LANDING RUNWAY 27: From SMALS on track 053° to THICC, then on track 053° to ROCNE, then on track 094° to cross VERNs at 6000 and at 210K, then on track 094°. Expect RADAR vectors to final approach course for RNP, GPS, or ILS RWY 27 approach.

LOST COMMUNICATIONS

RUNWAY 1L: After GAYLZ proceed to WMPOW at 4000, then on ILS or LOC RWY 1L approach.

RUNWAY 1R: After BAUNR proceed to TERKY at 4000, then on ILS or LOC RWY 1R approach.

RUNWAY 9: After NOMEY proceed to WOOKIE at 4000, then on ILS or LOC RWY 9 approach.

RUNWAY 19L: After ONEEL proceed to TUSKG at 6000 and hold.

RUNWAY 19R: After ERICM proceed to CAMDO at 6000 and hold.

RUNWAY 27: After VERNs maintain 6000, proceed to CARBB and hold..

NC-3, 22 FEB 2024 to 21 MAR 2024

NC-3, 22 FEB 2024 to 21 MAR 2024