

WAAS CH <b>40107</b> <b>W17A</b>	APP CRS <b>163°</b>	Rwy Idg <b>4200</b> TDZE <b>1047</b> Apt Elev <b>1047</b>
--	------------------------	---

# RNAV (GPS) RWY 17

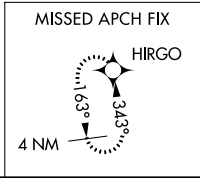
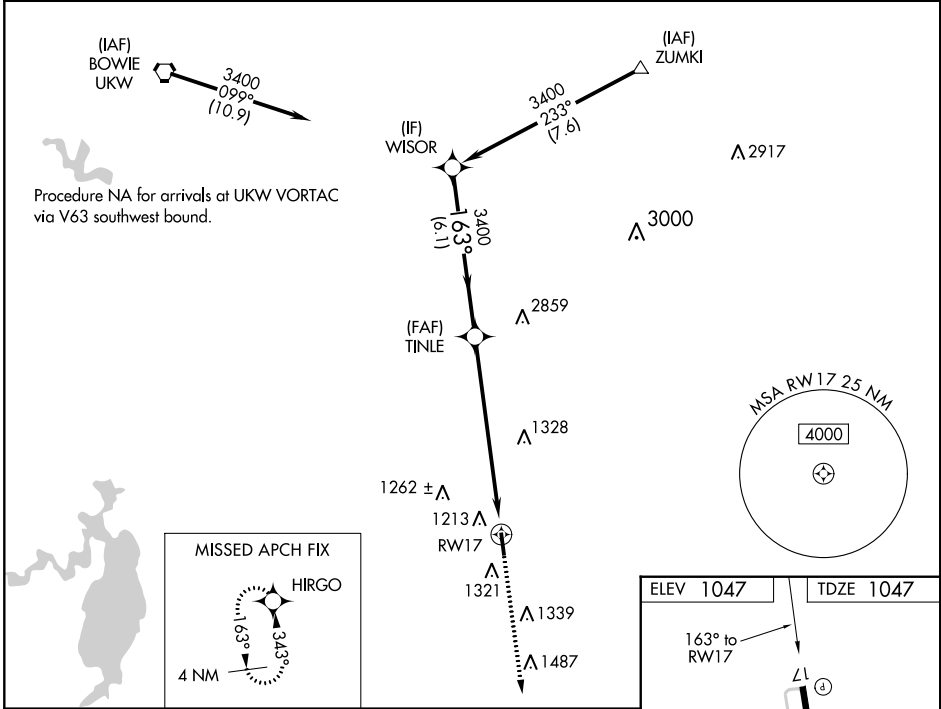
DECATUR MUNI (LUD)

**RNP APCH.**

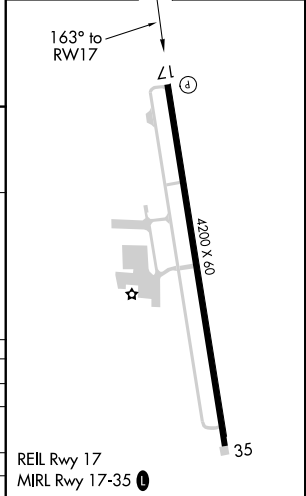
⚠ When local altimeter setting not received, use Fort Worth Meacham Intl altimeter setting and increase all DAs 113 feet, and all MDAs 120 feet, increase LPV visibilities ¼ mile, LNAV/VNAV visibilities ½ mile, and circling Cat B visibility ¼ mile. Baro-VNAV and VDP NA when using Fort Worth Meacham Intl altimeter setting. For uncompensated Baro-VNAV systems, LNAV/VNAV NA below -17°C (2°F) or above 54°C (130°F).

**MISSED APPROACH:** Climb to 2600 direct HIRGO and hold.

AWOS-3 <b>118.225</b>	REGIONAL APP CON <b>118.1 306.95</b>	UNICOM <b>122.8(CTAF) 0</b>
--------------------------	---	--------------------------------



ELEV 1047	TDZE 1047
-----------	-----------



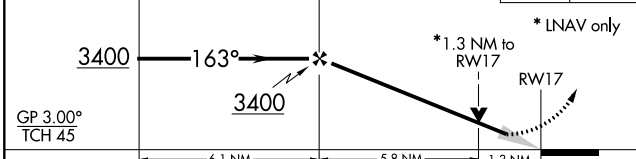
Procedure Turn NA

WISOR

TINLE

VGSI and RNAV glidepath not coincident (VGSI Angle 3.50/TCH 23).

2600 HIRGO



CATEGORY	A	B	C	D
LPV DA	1297-1	250 (300-1)		NA
LNAV/VNAV DA	1459-1½	412 (500-1½)		NA
LNAV MDA	1560-1	513 (600-1)		NA
<b>CIRCLING</b>	1680-1	633 (700-1)		NA

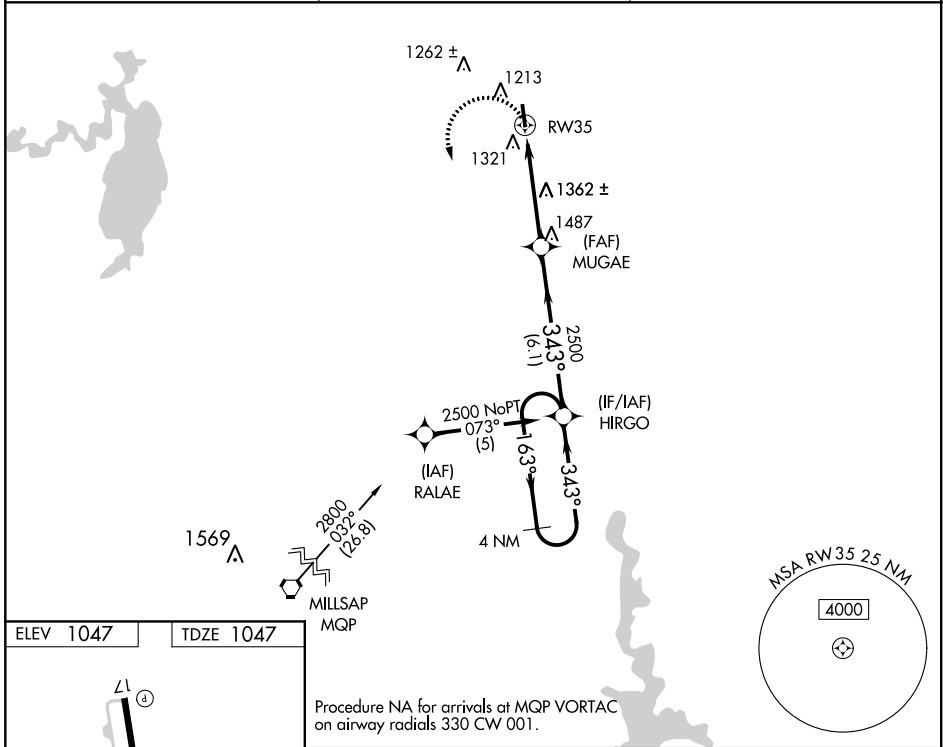
APP CRS	Rwy Idg	<b>4200</b>
<b>343°</b>	TDZE	<b>1047</b>
	Apt Elev	<b>1047</b>

# RNAV (GPS) RWY 35

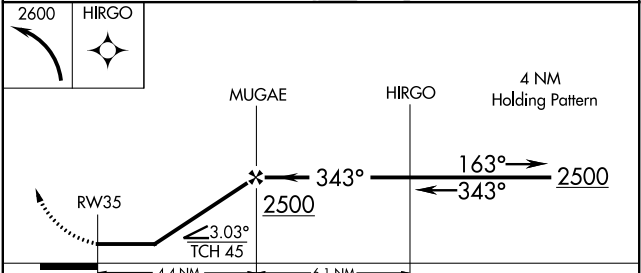
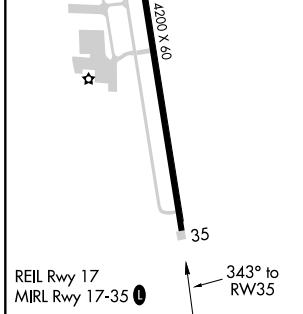
DECATUR MUNI (LUD)

RNP APCH.	<p>▼ When local altimeter setting not received, use Fort Worth Meacham Intl altimeter setting and increase all MDAs 120 feet, and Cat B visibilities ¼ mile.                  ▲ Rwy 35 helicopter visibility reduction below ¾ SM NA.</p>	<p>MISSED APPROACH: Climbing left turn to 2600 direct HIRGO and hold.</p>

AWOS-3 <b>118.225</b>	REGIONAL APP CON <b>118.1 306.95</b>	UNICOM <b>122.8(CTAF) 0</b>
--------------------------	---	--------------------------------



ELEV 1047	TDZE 1047
-----------	-----------



CATEGORY	A	B	C	D
LNAV MDA	1680-1	633 (700-1)	NA	
<input checked="" type="checkbox"/> CIRCLING	1680-1	633 (700-1)	NA	

SC-2, 02 DEC 2021 to 30 DEC 2021

SC-2, 02 DEC 2021 to 30 DEC 2021

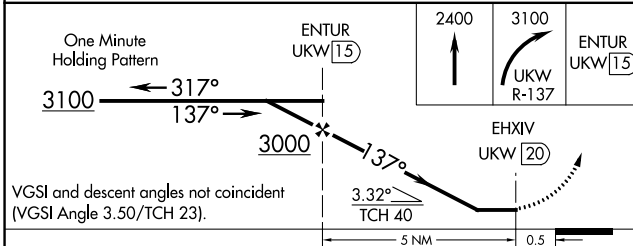
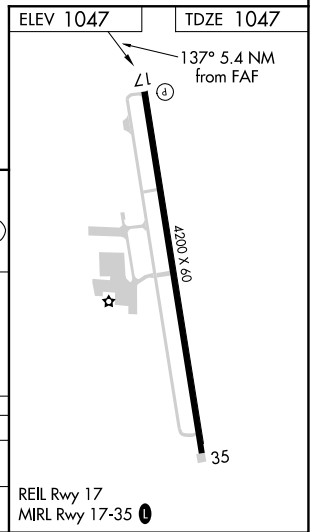
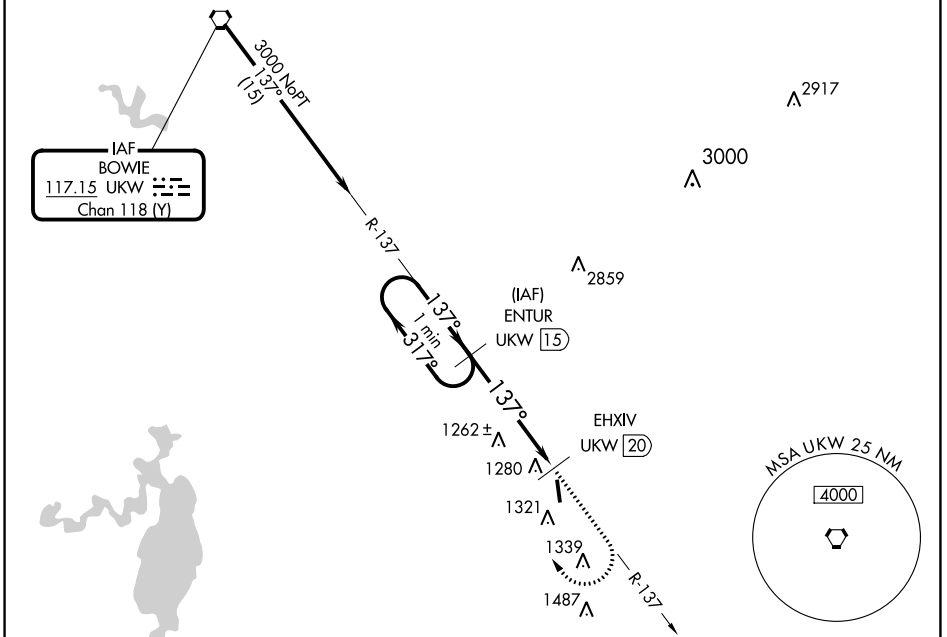
VORTAC UKW <b>117.15</b> Chan <b>118 (Y)</b>	APP CRS <b>137°</b>	Rwy Idg TDZE Apt Elev	<b>4200</b> <b>1047</b> <b>1047</b>
--	------------------------	-----------------------------	---

# VOR/DME RWY 17

DECATUR MUNI (LUD)

**⚠** When local altimeter setting not received, use Fort Worth Meacham Intl altimeter setting. **MISSED APPROACH:** Climb to 2400 then climbing right turn to 3100 via UKW R-137 to ENTUR/1.5 DME and hold.

AWOS-3 <b>118.225</b>	REGIONAL APP CON <b>118.1 306.95</b>	UNICOM <b>122.8(CTAF) 0</b>
--------------------------	---	--------------------------------



CATEGORY	A	B	C	D
S-17	1700-1 653 (700-1)	1700-1¼ 653 (700-1¼)	NA	
<b>C</b> CIRCLING	1800-1 753 (800-1)	1800-1¼ 753 (800-1¼)	NA	

REIL Rwy 17  
MIRL Rwy 17-35 **0**

SC-2, 02 DEC 2021 to 30 DEC 2021

SC-2, 02 DEC 2021 to 30 DEC 2021