

ALTUS, OKLAHOMA

22195

ILS or LOC Rwy 36R

LOC I-FNM	APCH CRS	Rwy/Idg	9001
110.55	355°	TDZE	1381
		Appt Elev	1382

AL-482 (USAF)

ALTUS AFB (KLT/S)

DME or RADAR required.

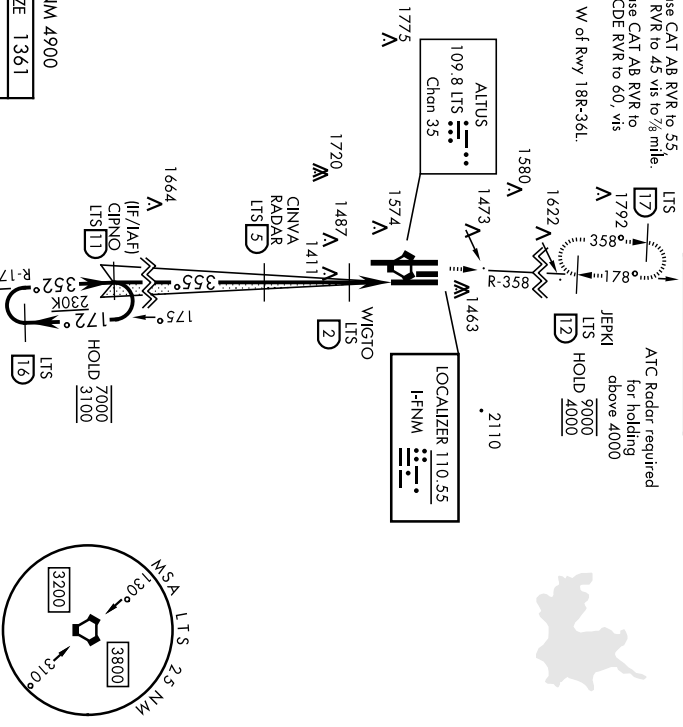
▲ When ALS Inop, increase RVR to 40 and vis to ¼ mile; RVR 18 authorized with use of FD or AP or HUD to DA.

▲ MISSED APPROACH: Climb to 4000, intercept ILS VORTAC R-358 to 12 DME (JFKI) and hold.

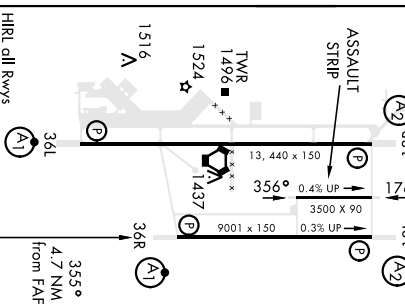
ATIS *	FORT WORTH CENTER	APP CON	TOWER *	GND CON	CINC DEL
109.8 273.5	133.5 350.35	125.1 353.7	119.65 254.4	121.85 275.8	120.65 284.7

** When ALS Inop, increase CAT AB RVR to 55, vis to 1 mile; CAT CDE RVR to 45 vis to ½ mile.
 *** When ALS Inop, increase CAT AB RVR to 55, vis to 1 mile; CAT CDE RVR to 60, vis to ½ mile.
 **** Circling not authorized W of Rwy 18R-36L.

ATC Radar required for holding above 4000
 JERKI LTS HOLD 9000
 JERKI LTS HOLD 4000



EMERG SAFE ALT 100 NM 4900
 ELEV 1382 TDZE 1361



FAF to MAP 4.2 NM		S-LOC 36R**		S-LOC 36R**		S-LOC 36R**	
Knots	60	90	120	150	180	1780-1	1840-1
Min/Sec	4:12	2:48	2:06	1:41	1:24	1780-1	1840-1
						398 (400-1)	458 (500-1)
						458 (500-1)	498 (500-1)
						498 (500-1½)	698 (700-2¼)
						1780/40	2080-2¼
						419 (400-¾)	2180-2¾
							798 (800-2¼)

ALTUS, OKLAHOMA
 Amdt 5 14JUL22
 34°40'N-99°16'W
 ALTUS AFB (KLT/S)
 ILS or LOC Rwy 36R

ALTUS, OKLAHOMA

ILS or RNAV (GPS) Y RWY 18R

LOC I-ALT 111.3	APCH CRS 175°	Rwy ldg 13,440
		TDZE 1378
		Arpt Elev 1382

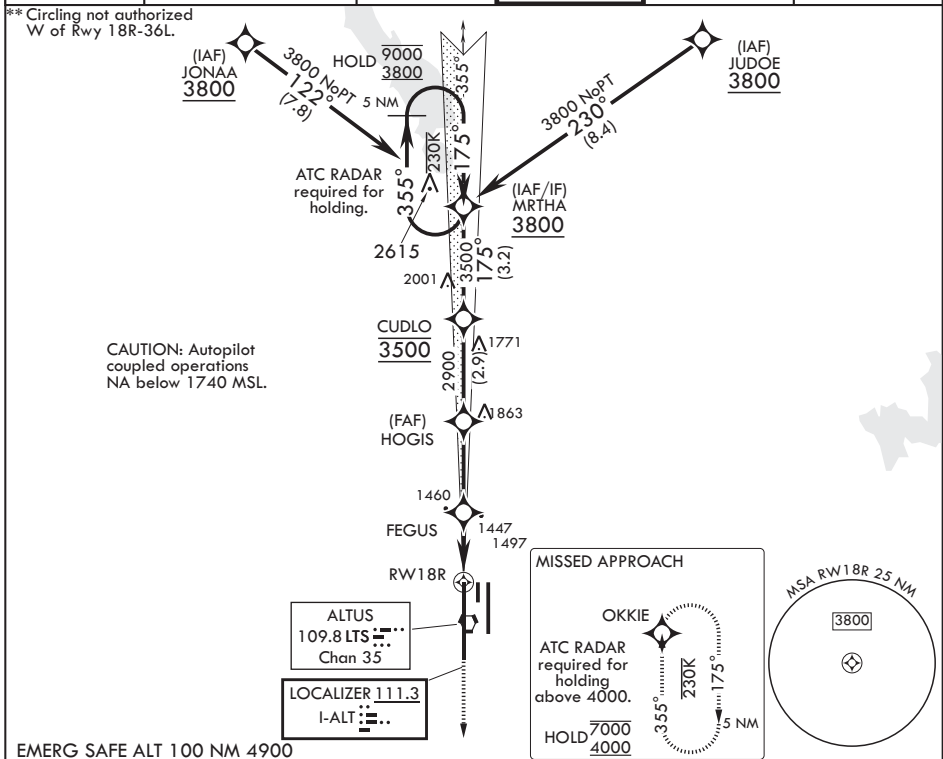
AL-482 (USAF)

ALTUS AFB (KLTS)

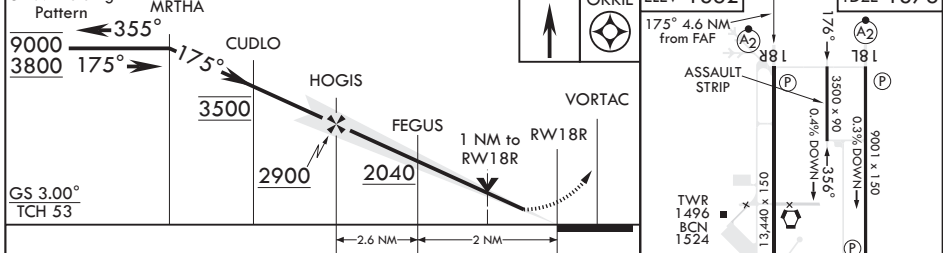
RNP APCH. DME/DME RNP 0.3 NA	SALS 	MISSED APPROACH: Climb to 4000 direct OKKIE and hold.
RNAV1 - GPS REQUIRED (for ILS)		

⚠ * When ALS inop, increase CAT AB RVR to 55, vis to 1 mile; CAT CDE RVR to 60, vis to 1 1/8 miles.

ATIS* 109.8 273.5	FORT WORTH CENTER 133.5 350.35	APP CON 125.1 353.7	TOWER* 119.65 254.4	GND CON 121.85 275.8	CLNC DEL 120.65 284.7
-----------------------------	--	-------------------------------	-------------------------------	--------------------------------	---------------------------------



EMERG SAFE ALT 100 NM 4900



CATEGORY	A	B	C	D	E
S-ILS 18R	1578/40		200	(200-3/4)	
RNAV MDA*	1760/40	382 (400-3/4)	1760/45	382 (400-7/8)	
C CIRCLING**	1780-1 398 (400-1)	1840-1 458 (500-1)	1880-1½ 498 (500-1½)	2080-2¼ 698 (700-2¼)	2180-2¾ 798 (800-2¾)

ALTUS, OKLAHOMA

34°40'N - 99°16'W

ALTUS AFB (KLTS)

Amdt 2 14JUL22

ILS or RNAV (GPS) Y RWY 18R

SC-1, 22 FEB 2024 to 21 MAR 2024

SC-1, 22 FEB 2024 to 21 MAR 2024

ALTUS, OKLAHOMA

ILS or RNAV (GPS) Y RWY 36L

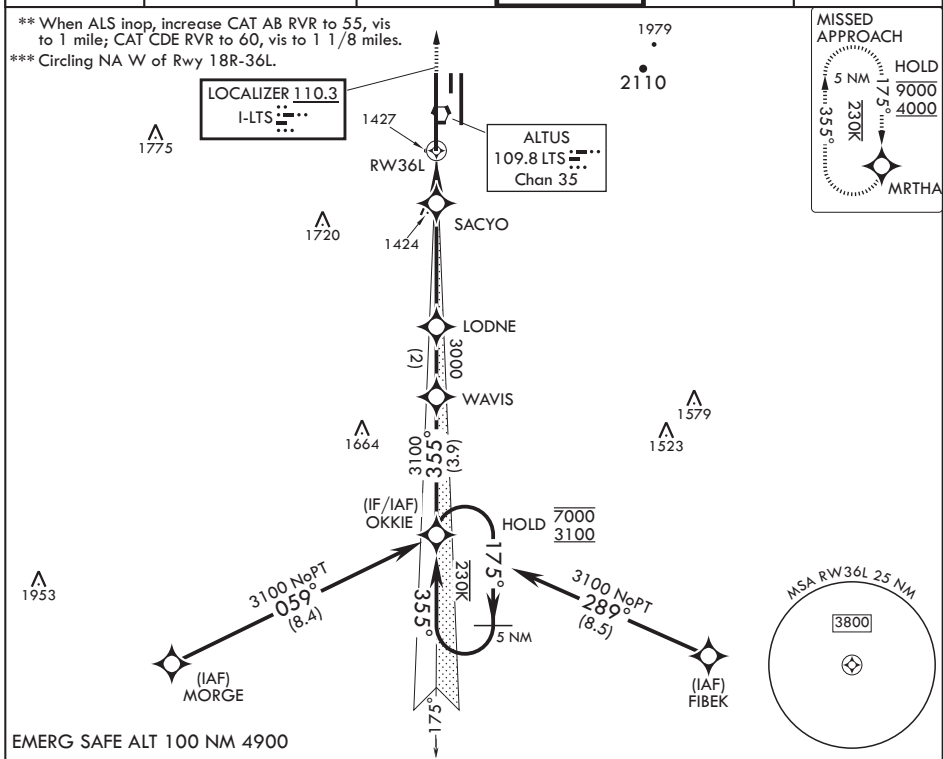
LOC I-LTS 110.3	APCH CRS 355°	Rwy Idg 13,440	TDZE 1354
		Arprt Elev 1382	

AL-482 (USAF)

ALTUS AFB (KLTS)

RNP APCH for LNAV	ALSF-1	MISSED APPROACH: Climb to 4000 direct MRTHA and hold.
RNAV1-GPS required for ILS.		
<p>⚠ * When ALS inop, increase CAT ABCDE RVR to 40, vis to 3/4 mile; RVR 18 authorized with use of FD or AP or HUD to DA.</p>		

ATIS* 109.8 273.5	FORT WORTH CENTER 133.5 350.35	APP CON 125.1 353.7	TOWER* 119.65 254.4	GND CON 121.85 275.8	CLNC DEL 120.65 284.7
-----------------------------	--	-------------------------------	-------------------------------	--------------------------------	---------------------------------



EMERG SAFE ALT 100 NM 4900

OKKIE (12)		WAVIS		LODNE		SACYO		VORTAC			
7000		3100		355°		3000		1800			
175°		355°		3100		1800		1 NM to RW 36L			
GS 3.00°		TCH 55		3.5 NM		1.5 NM		RW 36L			
CATEGORY	A	B	C	D	E	4000		MRTHA			
S-ILS 36L*	1554/24		200		(200-½)		ELEV 1382		TDZE 1354		
LNAV MDA**	1740/24	386 (400-½)	1740/35	386	(400-%)		ASSAULT STRIP		36L		
CIRCLING***	1780-1	1840-1	1880-1½	2080-2¼	2180-2¾		TWR 1496		36R		
	398 (400-1)	458 (500-1)	498 (500-1½)	698 (700-2¼)	798 (800-2¾)		BCN 1524		36L		
						HIRL all Rwys		36L		36L	

ALTUS, OKLAHOMA

34°40'N - 99°16'W

ALTUS AFB (KLTS)

Amdt 3 14JUL22
TERPS

ILS or RNAV (GPS) Y RWY 36L

SC-1, 22 FEB 2024 to 21 MAR 2024

SC-1, 22 FEB 2024 to 21 MAR 2024

ALTUS, OKLAHOMA

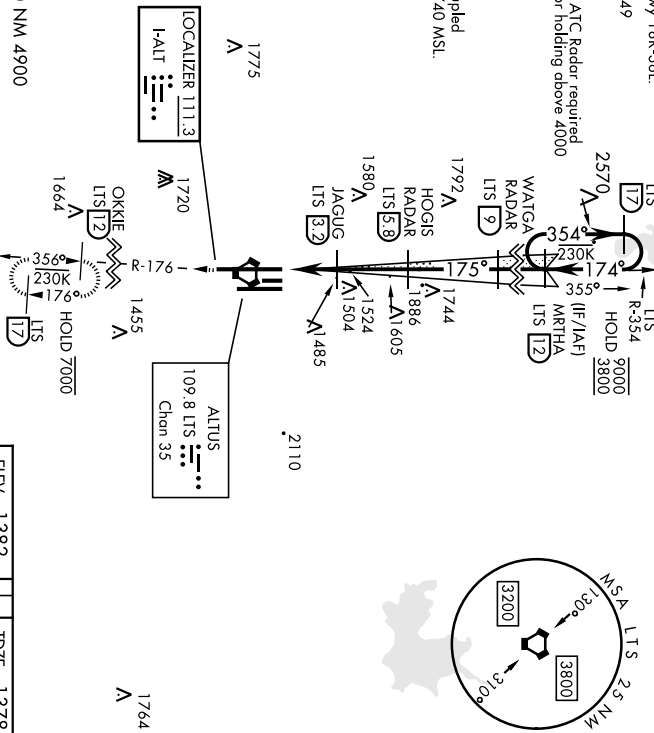
22195

ILS Z or LOC Rwy 18R

ALTUS AFB (KLTTS)

LOC I-ALT 111.3	APCH CRS 175° Appl Elev 1382	Rev./Idg 1378 1378	AL-482 (USAF)	SALSF 	MISSED APPROACH: Climb to 4000, intercept ILS VORTAC R-176 to OKKIE and hold.
DME or RADAR required.		ATIS * 109.8 273.5	FORT WORTH CENTER 133.5 350.35	TOWER * 125.1 353.7	GN D CON 121.85 275.8
***When ATIS inop, increase RVR to 55 and vis to 1 mile. ***When ATIS inop, increase CAT I AB RVR to 55, vis to 1 mile; CAT II/III vis to 1 1/2 miles.		APP CON 125.1 353.7	TOWER * 119.65 254.4	CINC DEL 120.65 284.7	
****Circling NA w/ of Rwy 18R-36L.					

CAUTION: Autopilot coupled operations NA below 1740 MSL.



EMERG SAFE ALT 100 NM 4900

4000	OKKIE LTS 1775 A	WATGA RADAR LTS 1792 A	HOGIS RADAR LTS 1580 A	JAGUG LTS 1504 A	1744 A	1886 A	1605 A	1524 A	1485 A	2110	ELEV 1382	TDZE 1378
R-176	1720 A	1744 A	1886 A	1605 A	1524 A	1485 A	1764 A					
	OKKIE LTS 1720 A	1455 A	1664 A	1356 A	1236 A	1176 A	1150 A					
VORTAC	KOTVE LTS 2040	JAGUG 2900	2900	175°	3300	3800	354°	174°	9000			
	0.5 NM	4.1 NM										
CATEGORY	A	B	C	D	E							
S-ILS 18R	1578/40	200	(200-¾)									
S-LOC 18R *	1760/40 382 (400-¾)	1760/45	382	(400-¾)								
CIRCLING	1780-1 1840-1	1880-1½	2080-2½	2180-2¾								
	398 (400-1)	458 (500-1)	498 (500-1½)	698 (700-2¼)	798 (800-2¾)							
LOCAL ALTIMETER, WITHOUT LAST STEP/DOWN FIX												
S-LOC 18R ***	2040/40 662 (700-¾)	2040-1¾	662	(500-1¾)								
CIRCLING	2040-1 658 (700-1)	2040-17½	2080-2½	2180-2¾								
	658 (700-1)	698 (700-2¼)	798 (800-2¾)									
FAF to MAP 4.1 NM												
HIRL all Rwys												
		36L										
Knots	60	90	120	150	180							
Mins:Sec	4:06	2:44	2:03	1:38	1:22							

ALTUS, OKLAHOMA

34° 40' N 99° 16' W

ALTUS AFB (KLTTS)

Amdt 2 14JUL22

ILS Z or LOC Rwy 18R

ALTUS, OKLAHOMA

22195

ILS Z or LOC RWY 36L

ALTUS AFB (KLT.S)

A1-482 (USAF)

LOC HTS 110.3	APCH CRS 355°	Req'd Idg 13440	TDZE 1354	Appl Elev 1382	
DME or RADAR required.					
<p>▼ * When ALS inop, increase RVR to 40 and vis to ½ mile; RVR 18 authorized with use of FD or AP or HUD to DA. ** When ALS inop, increase RVR to 55 and vis to 1 mile.</p>					
ATIS * 109.8 273.5	FORT WORTH CENTER 133.5 350.35	APP CON 125.1 353.7	TOWER * 119.65 254.4	GND CON 121.85 275.8	CINC DEL 120.65 284.7
<p>*** When ALS inop, increase CAT AB RVR to 55, vis to 1 mile; CAT CDE vis to 1½ miles.</p> <p>**** Circling not authorized W of Rwy 18R-36L.</p>					

LOC AUZAUZ 110.3
ILS AUZAUZ 110.3
ALTUS 109.8 ILS Chon 35

21110

1775 A
1720 A
1424 A
1664 A
1523 A
1764 A

LODNE
R-354
LTS R-354
MRTHA
LTS R-354
I2

OKKIE
I17
I12
356°
176°
3100
3100

LODNE
R-354
LTS R-354
MRTHA
LTS R-354
I2

SACYO
I23
I20
I13
KEGVE
VORTAC

3000
3000
1800
4000
LTS R-354
MRTHA
LTS R-354
I2

356°
176°
3100
3100

GS 3.00°
TCH 55

CATEGORY	A	B	C	D	E
S-ILS 36L*	1554/24 200 (200-½)				
S-LOC 36L**	1680/24 326 (300-½)	1680/26 326 (300-½)			
CIRCLING	1780-1 1780-1 458 (500-1)	1840-1 1880-1½ 498 (500-1½)	2080-2½ 698 (700-2¼)	2180-2¾ 798 (800-2¾)	
S-LOC 36L***	1800/24 446 (500-½)	1800/45 446 (500-¾)			
CIRCLING	1800-1 1840-1 458 (500-1)	1880-1½ 498 (500-1½)	2080-2½ 698 (700-2¼)	2180-2¾ 798 (800-2¾)	

WITHOUT LAST STEPDOWN FIX

34°40'N-99°16'W

ELEV 1382	TDZE 1354
ASSAULT STRIP	MRTHA ILS R-354 I2
TWR 1456	MRTHA ILS R-354 I2
36L	MRTHA ILS R-354 I2
36R	MRTHA ILS R-354 I2

13, 440 x 150
350 X 90
6001 x 150

0.4% UP
0.3% DOWN

1574 A
1516 A
1437 A
36L
36R

ALTUS, OKLAHOMA
Amth 3 14JUL22

ILS Z or LOC RWY 36L

ALTUS AFB (KLT.S)

FAF to MAP 4.6 NM		FAF to MAP 4.6 NM	
Knots	60	90	120
Mins:Sec	4:36	3:04	2:18
		1:50	1:32

ALTUS, OKLAHOMA

22195

RNAV (GPS)-A

APCH CRS 215°	Rwy Idg TDZE Arprt Elev	N/A N/A 1382
-------------------------	-------------------------------	---

AL-482 (USAF)

ALTUS AFB (KLTS)

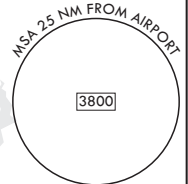
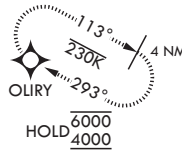
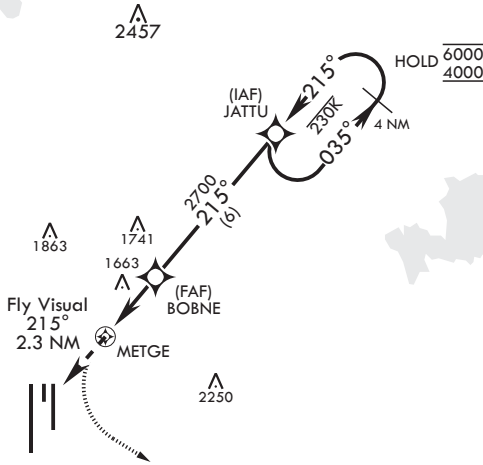
RNP APCH. DME/DME RNP 0.3 NA

MISSED APPROACH: Climb to 2200, then climbing left turn to 4000 direct OLIRY and hold.

ATC RADAR REQUIRED

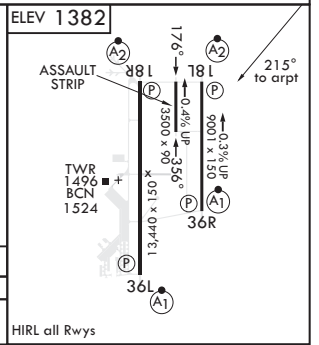
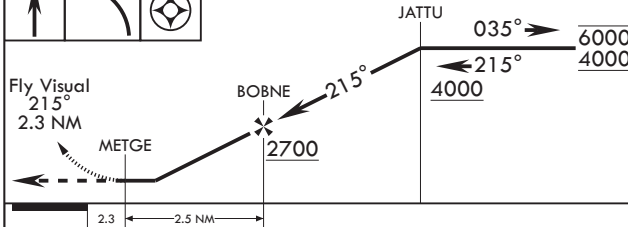
◀ Circling NA W of Rwy 18R-36L

ATIS ★ 109.8 273.5	FORT WORTH CENTER 133.5 350.35	APP CON 125.1 353.7	TOWER ★ 119.65 254.4	GND CON 121.85 275.8	CLNC DEL 120.65 284.7
------------------------------	--	-------------------------------	--------------------------------	--------------------------------	---------------------------------



FOR USE BY 97 AMW ACFT ONLY

EMERG SAFE ALT 100 NM 4900



CATEGORY	A	B	C	D	E
◻ CIRCLING	NA			2080-3 698 (700-3)	2180-3 798 (800-3)

HIRL all Rwys

ALTUS, OKLAHOMA

34°40'N - 99°16'W

ALTUS AFB (KLTS)

Amdt 4 14JUL22
TERPS

RNAV (GPS)-A

SC-1, 22 FEB 2024 to 21 MAR 2024

SC-1, 22 FEB 2024 to 21 MAR 2024

APCH CRS 293°	Rwy Idg TDZE Arprt Elev	N/A N/A 1382
-------------------------	-------------------------------	---------------------------

AL-482 (USAF)

ALTUS AFB (KLTS)

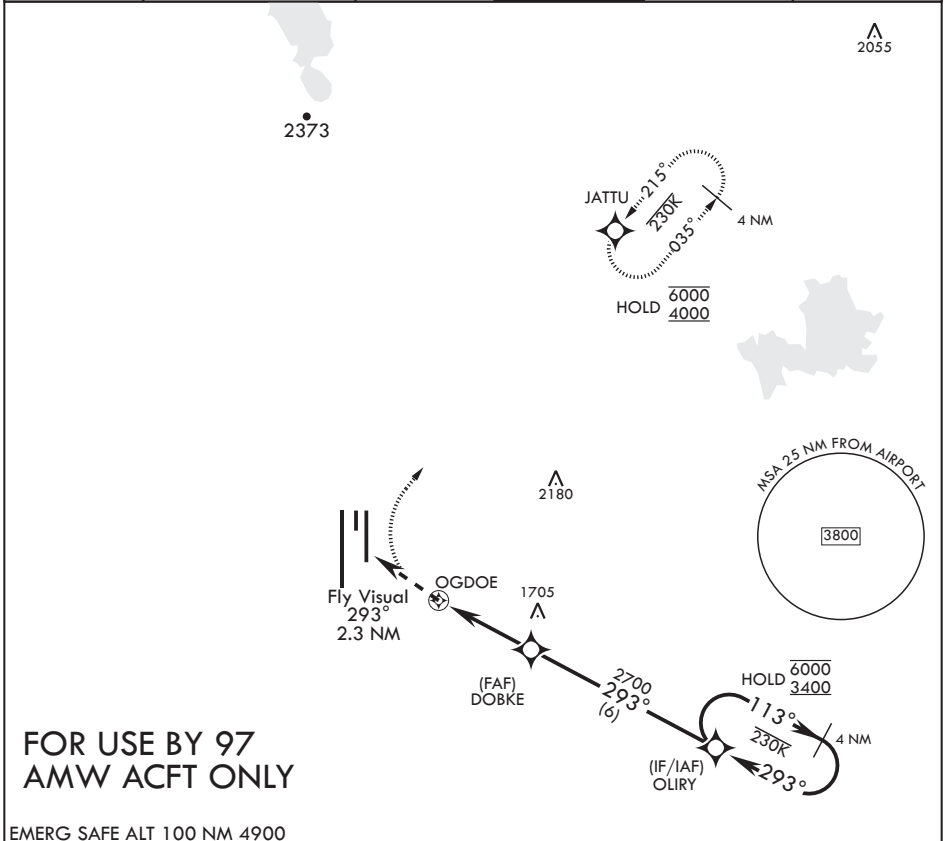
RNP APCH. DME/DME RNP-0.3 NA

MISSED APPROACH: Climb to 2200, then climbing right turn to 4000 direct JATTU and hold.

ATC RADAR required.

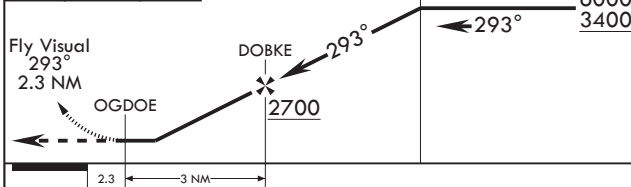
◀ Circling NA W of Rwy 18R-36L.

ATIS ★ 109.8 273.5	FORT WORTH CENTER 133.5 350.35	APP CON 125.1 353.7	TOWER ★ 119.65 254.4	GND CON 121.85 275.8	CLNC DEL 120.65 284.7
------------------------------	--	-------------------------------	--------------------------------	--------------------------------	---------------------------------

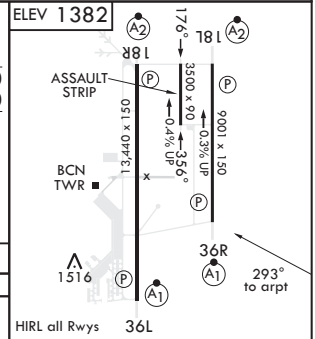


**FOR USE BY 97
AMW ACFT ONLY**

EMERG SAFE ALT 100 NM 4900



CATEGORY	A	B	C	D	E
◻ CIRCLING	NA			2080-3 698 (700-3)	2180-3 798 (800-3)



ALTUS, OKLAHOMA

RNAV (RNP) X RWY 36L

APCH CRS	Rwy Idg	13,440
355°	TDZE	1354
	Arprt Elev	1382

AL-482 (USAF)

ALTUS AFB (KLTS)

RNP AR APCH - RF

ALS-F-1

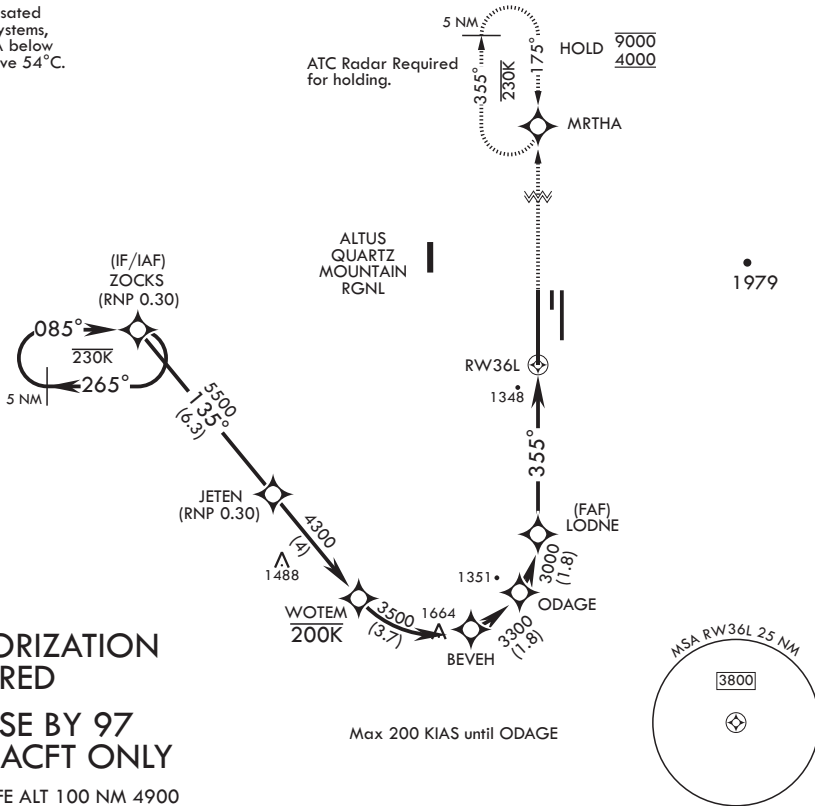
MISSED APPROACH: Climb to 4000 on track 355° to MRTHA and hold.

▼ * When ALS inop, increase RVR to 45, vis to 7/8 mile.
 ** When ALS inop, increase RVR to 55, vis to 1 mile.



ATIS ★ 109.8 273.5	APP CON 125.1 353.7	TOWER ★ 119.65 254.4	GND CON 121.85 275.8	CLNC DEL 120.65 284.7
-----------------------	------------------------	-------------------------	-------------------------	--------------------------

For uncompensated Baro-VNAV systems, procedure NA below -17°C or above 54°C.



AUTHORIZATION REQUIRED
FOR USE BY 97 AMW ACFT ONLY
 EMERG SAFE ALT 100 NM 4900

ZOCKS	JETEN	WOTEM	BEVEH	ODAGE	LODNE	RW36L	4000	MRTHA	ELEV 1382	TDZE 1354
8000	5500	4300	3500	3300	3000	3000	tr 355°	⊙		
GP 3.00°										
TCH 55										
CATEGORY	A	B	C	D						
RNP 0.10 DA*	1646/24	292	(300-1/2)							
RNP 0.30 DA**	1732/35	378	(400-3/8)							

ASSAULT STRIP

TWR BCN

36L

1394

355° to RW36L

176°

178 L

3500 x 90

0.4% UP

0.33% UP

9001 x 150

36R

13,440 x 1,30°

ALTUS, OKLAHOMA
Amdt 2 14JUL22

34°40'N - 99°16'W

ALTUS AFB (KLTS)

RNAV (RNP) X RWY 36L

SC-1, 22 FEB 2024 to 21 MAR 2024

SC-1, 22 FEB 2024 to 21 MAR 2024

ALTUS, OKLAHOMA

23222

RNAV (RNP) Y RWY 18L

AL482 [USAF]

ALTUS AFB (KLTS)

ARCH CRS	Rwy Idg	9001
175°	TDZE	1382
	Appt Elev	1382

RNP AR ARCH - GPS

▲* When ALS Inop, increase RVR to 45, vis to 7/8 mile.
 **When ALS Inop, increase RVR to 55, vis to 1 mile.

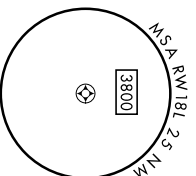
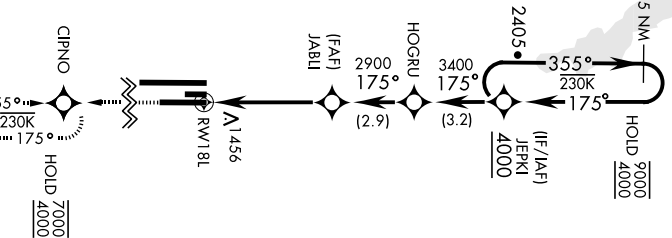


MISSSED APPROACH: Climb to 4000 direct CIPNO and hold.

ATIS *	FORT WORTH CENTER	APP CON	TOWER *	GND CON	CINC DEL
109.8 273.5	133.5 350.35	125.1 353.7	119.65 254.4	121.85 275.8	120.65 284.7

For uncompensated Baro-VNAV systems, procedure NA below -17°C (-17°F) or above 54°C (130°F).

FOR USE BY 97 AMW ACFT ONLY

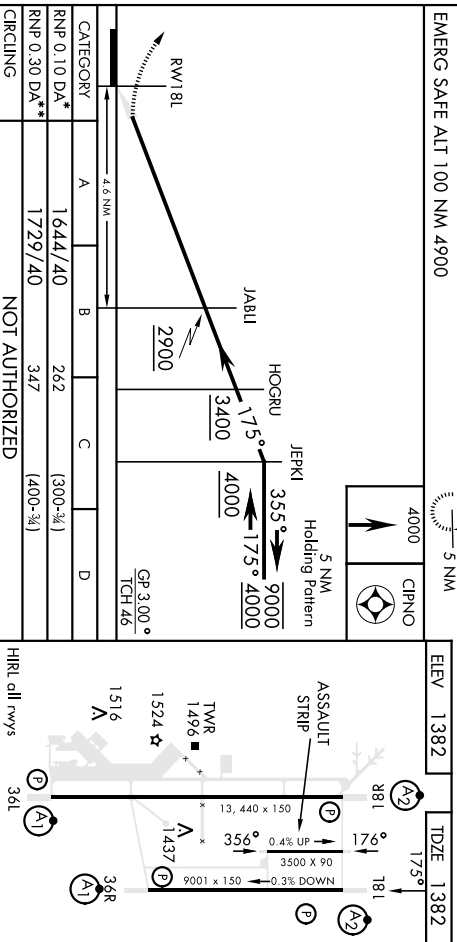


SC-1, 22 FEB 2024 to 21 MAR 2024

SC-1, 22 FEB 2024 to 21 MAR 2024

AUTHORIZATION REQUIRED

EMERG SAFE ALT 100 NM 4900



ALTUS, OKLAHOMA
Amdt 2 10AUG23

34°40'N-99°16'W

ALTUS AFB (KLTS)

RNAV (RNP) Y RWY 18L

ALTUS, OKLAHOMA

23250

RNAV (RNP) Y RWY 36R

AL-482 [USAF]

ALTUS AFB (KLT5)

ARCH CRS	Rwy Idg	9001
355°	TDZE	1361
	Apri Elev	1382

RNP AR ARCH

▼ * When AIS inop, increase RVR to 40, vis to 3/4 mile.
 ** When AIS inop, increase RVR to 45, vis to 7/8 mile.

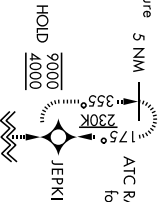
AISF-1

MISSED APPROACH: Climb to 4000 direct JEPKI and hold.

ATIS *	FORT WORTH CENTER	APP CON	TOWER *	GND CON	CINC DEL
109.8 273.5	133.5 350.35	125.1 353.7	119.65 254.4	121.85 275.8	120.65 284.7

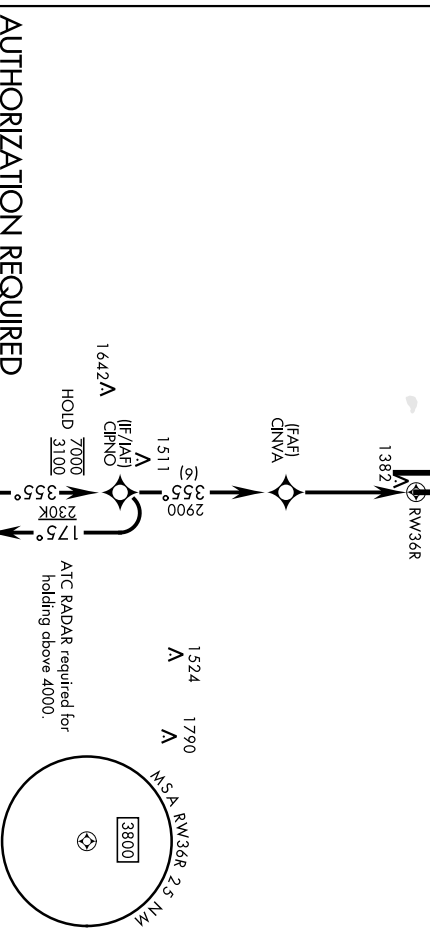
For uncompensated Baro-VNAV systems, procedure for NA below -1.7°C (2°F) or above 54° C (130° F).

5 NM ATC RADAR required for holding.



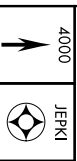
FOR USE BY 97 AMW ACFT ONLY

2083



AUTHORIZATION REQUIRED

EMERG SAFE ALT 100 NM 4900



CATEGORY	A	B	C	D	ELEV 1382	TDZE 1361
RNP 0.10 DA*	1611/24	250	(300-1/2)			
RNP 0.30 DA**	1672/24	311	(300-1/2)			
CIRCLING	NOT AUTHORIZED					

GP 3.00°	TCH 53
GP 3.00°	TCH 53

ASSAULT STRIP	381	176	181
TWR	1496	356	0.4% UP
	1524	3500 X 90	0.3% UP
	1516	13,440 X 150	0.3% UP
		1,437	0.3% UP
		36R	355°

ALTUS, OKLAHOMA

34°40'N-99°16'W

ALTUS AFB (KLT5)

RNAV (RNP) Y RWY 36R

Amch 3 07SEP23

ALTUS, OKLAHOMA

RNAV (GPS) Z RWY 36L

APCH CRS	Rwy Idg	13,440
355°	TDZE	1354
	Arpt Elev	1382

AL-482 (USAF)

ALTUS AFB (KLTS)

RNP APCH. DME/DME RNP 0.3 NA

ALSF-1

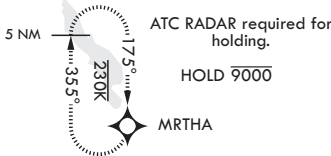
MISSED APPROACH: Climb to 4000 direct MRTHA and hold.

▼ * When ALS inop increase CAT AB RVR to 40, vis to 3/4 mile; CAT CD RVR to 45, vis to 7/8 mile; CAT E RVR to 50, vis to 1 mile.
 ** When ALS inop, increase CAT AB RVR to 55, vis to 1 mile; CAT CDE RVR to 60, vis to 1 1/8 miles.

ATIS*	FORT WORTH CENTER	APP CON	TOWER*	GND CON	CLNC DEL
109.8 273.5	133.5 350.35	125.1 353.7	119.65 254.4	121.85 275.8	120.65 284.7

*** Circling NA W of Rwy 18R-36L.

For uncompensated Baro-VNAV systems, procedure NA below -17°C (2°F) or above 54° (130°F)



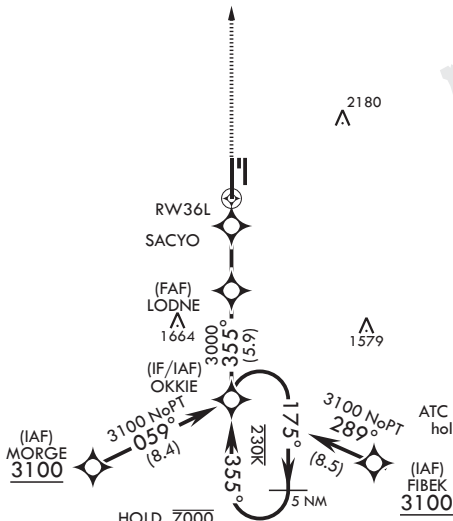
HOLD 9000

MRTHA

2422

2180

1579



MSA RW36L 25 NM

3800

ATC RADAR required for holding above 4000.

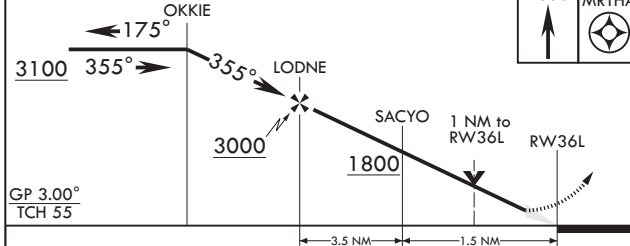
EMERG SAFE ALT 100 NM 4900

HOLD 7000

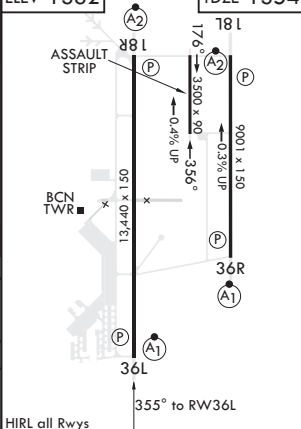


ELEV 1382

TDZE 1354



CATEGORY	A	B	C	D	E
LNAV/VNAV DA*	1604/24 250 (300-1/2)		1615/24 261 (300-1/2)	1634/24 280 (300-1/2)	1677/26 323 (300-1/2)
LNAV MDA**	1740/24 386 (400-1/2)		1740/35 386 (400-3/4)		
C CIRCLING***	1780-1 398 (400-1)	1840-1 458 (500-1)	1880-1 1/2 498 (500-1 1/2)	2080-2 1/4 698 (700-2 1/4)	2180-2 3/4 798 (800-2 3/4)



ALTUS, OKLAHOMA

34°40'N - 99°16'W

ALTUS AFB (KLTS)

Amdt 3 14JUL22

RNAV (GPS) Z RWY 36L

SC-1, 22 FEB 2024 to 21 MAR 2024

SC-1, 22 FEB 2024 to 21 MAR 2024

ALTUS, OKLAHOMA

RNAV (GPS) Z RWY 36R

APCH CRS 355°	Rwy Idg TDZE Arprt Elev	9001 1361 1382
-------------------------	-------------------------------	---

AL-482 (USAF)

ALTUS AFB (KLTS)

RNP APCH. DME/DME RNP-0.3 NA

ALSF-1

MISSED APPROACH: Climb to 4000 direct JEPKI and hold.

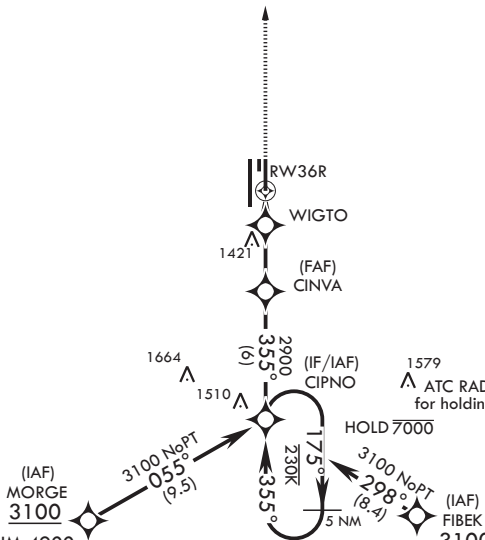
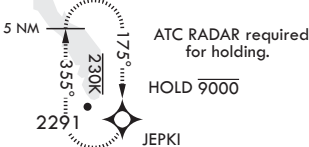
* When ALS inop increase RVR to 40, vis to 3/4 mile.
 ** When ALS inop increase CAT AB RVR to 35, vis to 1 mile; CAT CDE RVR 50, vis to 1 mile.



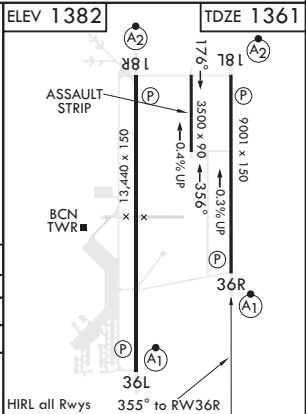
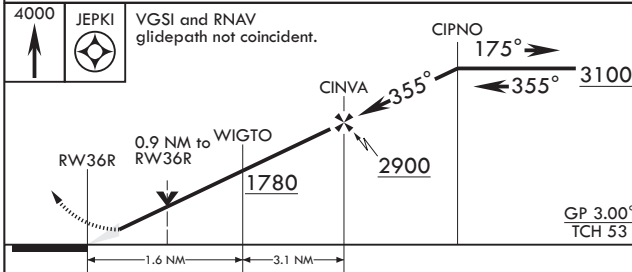
ATIS* 109.8 273.5	FORT WORTH CENTER 133.5 350.35	APP CON 125.1 353.7	TOWER* 119.65 254.4	GND CON 121.85 275.8	CLNC DEL 120.65 284.7
-----------------------------	--	-------------------------------	-------------------------------	--------------------------------	---------------------------------

*** Circling NA W of Rwy 36L-18R.

For uncompensated Baro-VNAV systems, procedure NA below -17°C (2°F) or above 54°C (130°F).



EMERG SAFE ALT 100 NM 4900



CATEGORY	A	B	C	D	E
LNNAV/VNAV DA*	1611/24		250	(300-1/2)	
LNNAV MDA**	1700/24	339 (400-1/2)	1700/26	339	(400-1/2)
C CIRCLING***	1780-1 398 (400-1)	1840-1 458 (500-1)	1880-1 1/2 498 (500-1 1/2)	2080-2 1/4 698 (700-2 1/4)	2180-2 3/4 798 (800-2 3/4)

ALTUS, OKLAHOMA

34°40'N - 99°16'W

ALTUS AFB (KLTS)

Amdt 3 14JUL22

RNAV (GPS) Z RWY 36R

SC-1, 22 FEB 2024 to 21 MAR 2024

SC-1, 22 FEB 2024 to 21 MAR 2024

ALTUS, OKLAHOMA

VOR or TACAN Rwy 18R

VORTAC LITS	APCH CRS	Rwy Idg	13 440
109.8	171°	TDZE	1378
Chon 35		Appt Elev	1382

AL-482 [USAF]

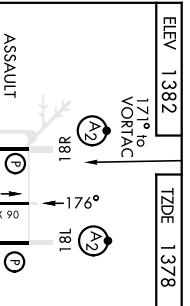
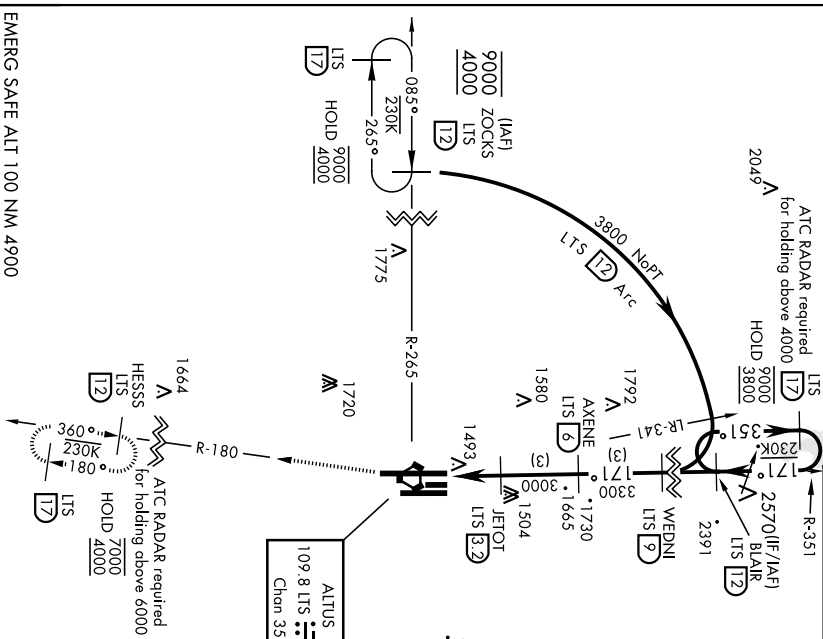
ALTUS AFB (KLT.S)

DME required:
▲ When ALT hosp, increase CAT AB RVR to 55 and vis to 1 mile, CAT CDE RVR to 60 and vis to 1/8 miles.
****** Circling not authorized W of Rwy 18R-36L.

SAISF

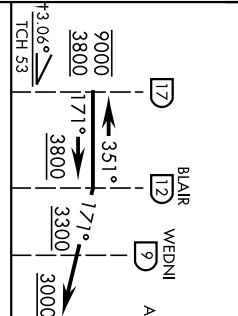

MISSED APPROACH: Climb to 4000 on LITS VORTAC R-180 to HESSS and hold.

109.8 273.5	ATIS *	FORT WORTH CENTER	APP CON	TOWER *	GND CON	CINCL DEL
			145.1 353.7	119.65 254.4	121.85 275.8	120.65 284.7



SC-1, 22 FEB 2024 to 21 MAR 2024

SC-1, 22 FEB 2024 to 21 MAR 2024

EMERG SAFE ALT 100 NM 4900					
† AXENE to MAP					
					
CATEGORY	A	B	C	D	E
S-18R*	1760/40	382 (400-¾)	1760/45	382	(400-¾)
** CIRCLING	1780-1	1840-1	1880-1½	2080-2¼	2180-2¾
	398 (400-1)	458 (500-1)	498 (500-1½)	698 (700-2¼)	798 (800-2¾)
HRL all Rvys					

ALTUS, OKLAHOMA
 34° 40'N-99° 16'W
 ALTUS AFB (KLT.S)
 Arndt 4 14JUL22
VOR or TACAN Rwy 18R

ALTUS, OKLAHOMA

VOR or TACAN Rwy 36L

22195

VOR/AC LTS	APCH CRS	Rwy Idg	13,440
109.8	360°	TDZE	1354
Chon 35		Appl Elev	1382

AL-482 [USAF]

ALTUS AFB (KLT.S)

DME required.

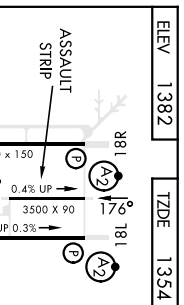
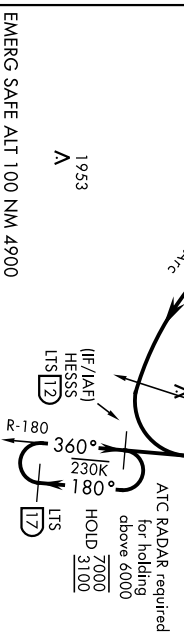
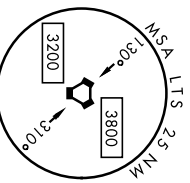
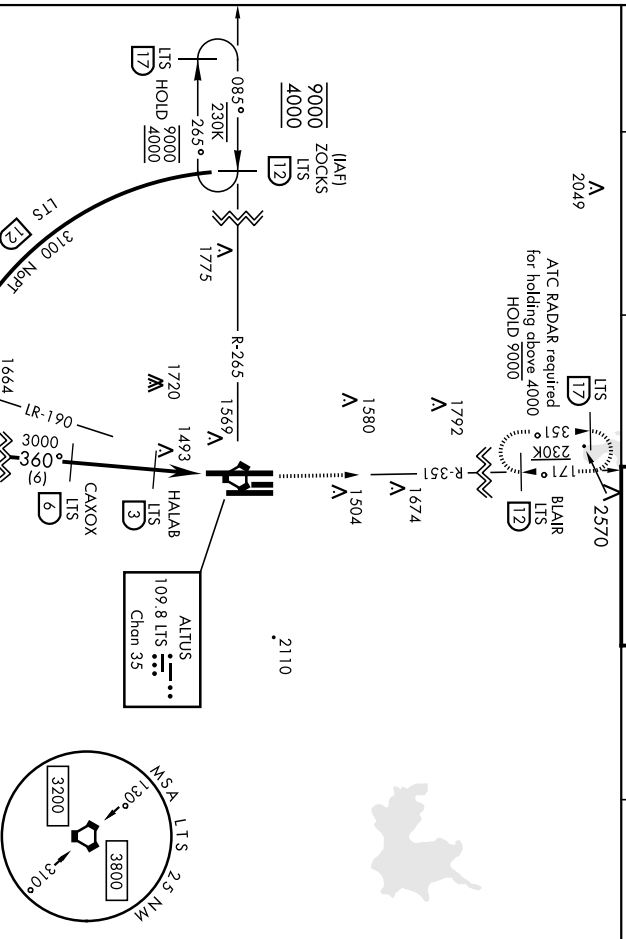
▲ When AIS Inop, increase CAT AB RVR to 55 and vis to 1 mile, CAT CDE RVR to 60 and vis to 1/8 miles.

** Circling not authorized W of Rwy. 18R-36L.



MISSED APPROACH: Climb to 4000 on LTS VOR/AC R-351 to BLAIR and hold.

ATIS *	FORT WORTH CENTER	APP CON	TOWER *	GND CON	CINC DEL
109.8 273.5	133.5 350.35	125.1 353.7	119.65 254.4	121.85 275.8	120.65 284.7



CATEGORY	T From CAXOX to MAP.				
	A	B	C	D	E
S-36L *	1760/24	406 (400-1/2)	1760/40	406 (400-3/4)	2180-234
** CIRCLING	1780-1	1840-1	1880-1 1/2	2080-2 1/2	2180-2 3/4
CIRCLING	398 (400-1)	458 (500-1)	498 (500-1 1/2)	698 (700-2 1/2)	798 (800-2 3/4)

ALTUS, OKLAHOMA
 Amdt 4 14JUL22
 34°40'N-99°16'W
 ALTUS AFB (KLT.S)
 HIRL all Rwys

VOR or TACAN Rwy 36L

ALTUS, OKLAHOMA

VOR or TACAN-C

22195

VORTAC LTS	APCH CRS	Rwy/Idg
109.8	215°	N/A
Chn 35	TDZE	Appt Elev
		1382

AL482 [USAF]

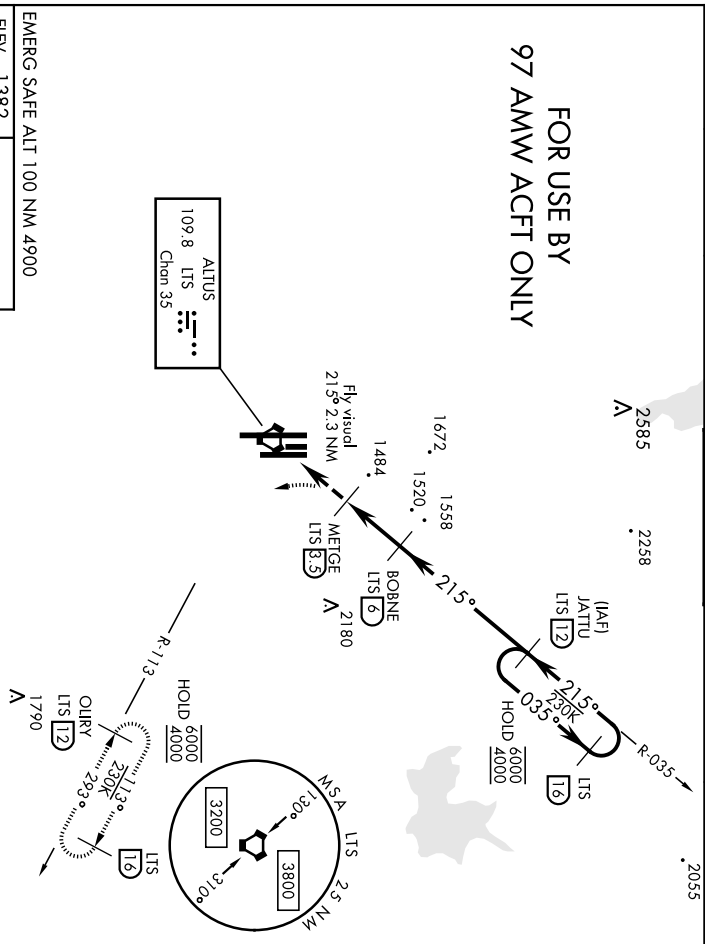
ALTUS AFB (KLTS)

⚠ Circling not authorized W of Rwy 18R-36L.

MISSED APPROACH: Climb to 2300, then climbing left turn to 4000 Intercept LTS R-113 to OILRY and hold.

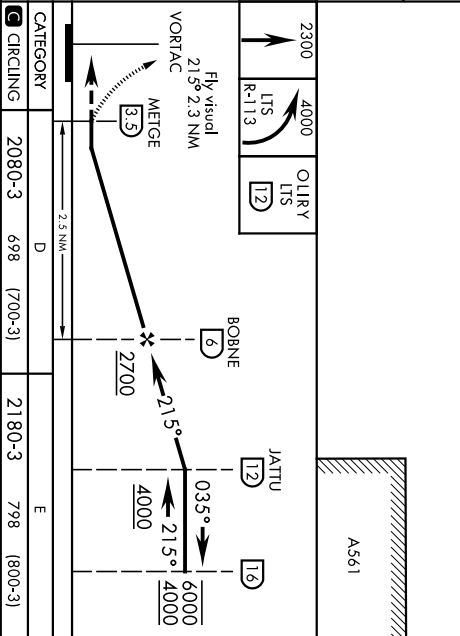
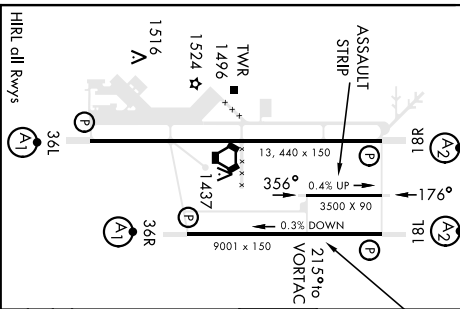
ATIS ★	FORT WORTH CENTER	APP CON	TOWER ★	GND CON	CLNC DEL
109.8 273.5	133.5 350.35	125.1 353.7	119.65 254.4	121.85 275.8	120.65 284.7

FOR USE BY
97 AMW ACFT ONLY



EMERG SAFE ALT 100 NM 4900

ELEV	1382
------	------



CATEGORY	D	E
CIRCLING	2080-3 698 (700-3)	2180-3 798 (800-3)

34°40'N-99°16'W

ALTUS, OKLAHOMA
Amdt 3 14JUL22
ALTUS AFB (KLTS)
VOR or TACAN-C

