

DREAM SIX DEPARTURE (DREAM6 • DREAM)

NELLIS AFB (KLSV)
LAS VEGAS, NEVADA

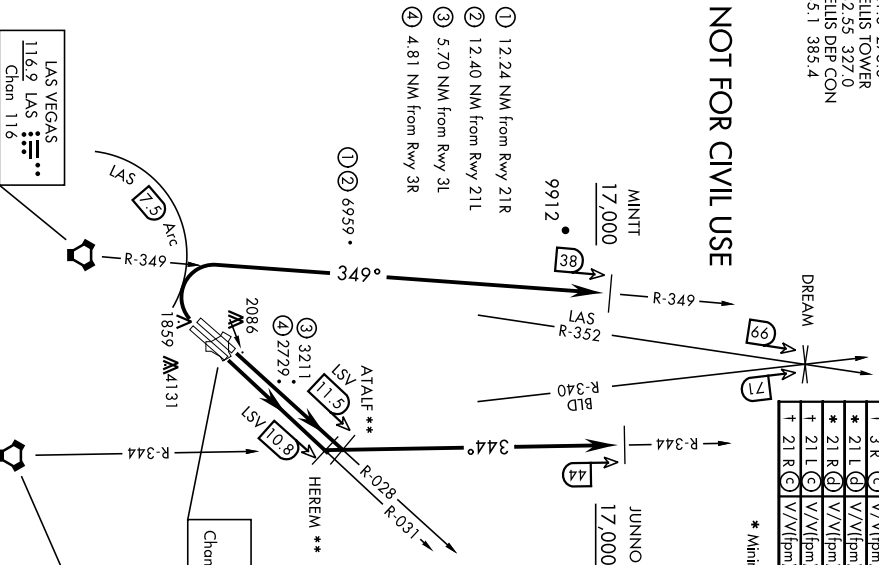
ATIS 270.1
CINC DEL
120.9 289.4
GND CON
121.8 275.8
NELLIS TOWER
132.55 327.0
NELLIS DEF CON
135.1 385.4

Rwy	Knobs	60	120	180	240	300	360
* 3 L (A)	V/V(fpm)	269	538	807	1076	1345	1614
* 3 R (B)	V/V(fpm)	229	458	687	916	1145	1374
† 3 L (C)	V/V(fpm)	498	996	1494	1992	2490	2988
† 3 R (C)	V/V(fpm)	496	992	1488	1984	2480	2976
* 21 L (D)	V/V(fpm)	389	778	1167	1556	1945	2334
* 21 R (D)	V/V(fpm)	395	790	1185	1580	1975	2370
† 21 L (C)	V/V(fpm)	453	906	1359	1812	2265	2718
† 21 R (C)	V/V(fpm)	457	914	1371	1828	2285	2742

* Minimum † ATC Climb Rate

- (A) to 3400
- (B) to 3000
- (C) to 17,000
- (D) to 8500

NOT FOR CIVIL USE



- ① 12.24 NM from Rwy 21R
- ② 12.40 NM from Rwy 21L
- ③ 5.70 NM from Rwy 3L
- ④ 4.81 NM from Rwy 3R

①② 6959 •

** Lead DME:
ATALF - LSV 9.5
HEREM - LSV 8.8

LAS VEGAS
116.9 LAS
Chen 11.6

BOULDER CITY
116.7 BLD
Chen 11.4

DEPARTURE ROUTE DESCRIPTION

▼ **TAKE-OFF RWY 3L:** Fly runway heading to intercept the LSV TACAN R-028 then direct ATALF, intercept the BLD VORTAC R-344 then direct JUNNO, cross JUNNO at or above 17,000, then via assigned route.

TAKE-OFF RWY 3R: Fly runway heading to intercept the LSV TACAN R-031 then direct HEREM, intercept the BLD VORTAC R-344 then direct JUNNO, cross JUNNO at or above 17,000, then via assigned route.

TAKE-OFF RWY 21L/R: Turn right to intercept LAS VORTAC R-349 outbound. Remain North of LAS 7.5 DME turning Northbound. Intercept LAS R-349 between 5000 and 6000, do not proceed West of LAS R-349. Cross MINITT at above 17,000, then via assigned route.

NOISE ABATEMENT PROCEDURES: Fly LAW Nellis Noise Abatement instructions published in AP/1.

DREAM SIX DEPARTURE (DREAM6 • DREAM)

LAS VEGAS, NEVADA
NELLIS AFB (KLSV)
Amth 5 29MAR18

21112

NELLIS AFB (KLSV)

FYTR SIX DEPARTURE (FYTR6 • FYTR)

AL-227 [USAF]

LAS VEGAS, NEVADA

Rwy	Knots	60	120	180	240	300	360
3L	ⓐ V/V(fpm)	394	788	1182	1576	1970	2364
3R	ⓐ V/V(fpm)	392	784	1176	1568	1960	2352
21L	ⓐ V/V(fpm)	388	776	1164	1552	1940	2328
21R	ⓐ V/V(fpm)	390	780	1170	1560	1950	2340

Minimum Climb Rate

- ⓐ to 9300
- ⓑ to 13,500

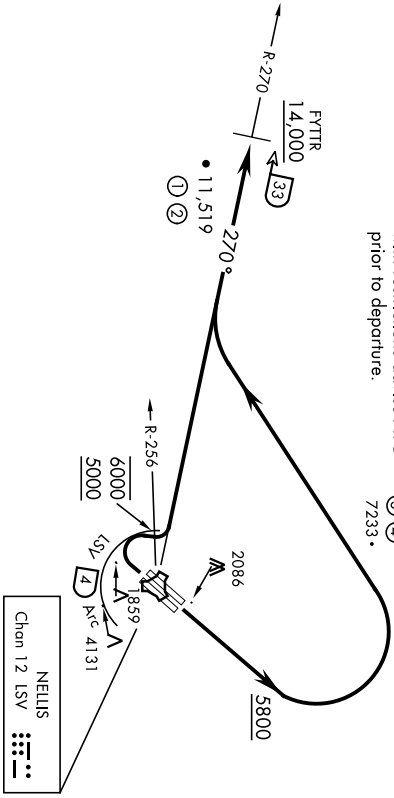
ATIS 270.1
 CLNC DEL 120.9 289.4
 GND CON 121.8 273.8
 NELLIS TOWER 132.55 327.0
 NELLIS CONTROL 119.35 254.4
 NELLIS DEP CON 135.1 385.4

RADAR REQUIRED ABOVE FL190

**RADAR REQUIRED FOR
RWY 3L/R DEPARTURES**

- ① 29.84 NM from Rwy 21L
- ② 29.71 NM from Rwy 21R
- ③ 15.55 NM from Rwy 3L
- ④ 15.69 NM from Rwy 3R

CAUTION: If unable to comply
 with restrictions advise ATC
 prior to departure.



DEPARTURE ROUTE DESCRIPTION

TAKE-OFF RWY 3L/R: Fly runway heading until reaching 5800, then climbing left turn to intercept LSV TACAN R-270 outbound. Cross FYTR at or above 14,000 or as assigned, then via assigned route.

TAKE-OFF RWY 21L/R: Turn right to intercept LSV TACAN R-270 outbound, remain within LSV 4 DME until joining LSV R-270, cross LSV R-256 between 5000 and 6000. Cross FYTR at or above 14,000 or as assigned, then via assigned route.

NOISE ABATEMENT PROCEDURES: Fly LAW Nellis Noise Abatement instructions published in AP/1.

FYTR SIX DEPARTURE (FYTR6 • FYTR)

Amdt 4 22APR21

LAS VEGAS, NEVADA
NELLIS AFB (KLSV)

WORMON MESA SEVEN DEPARTURE (MMM7 • MMM)

NELLIS AFB (KLSV)
LAS VEGAS, NEVADA

SHL-227 [USAF]

ATIS 227.1
CLINC DEL
120.9 289.4
GND CON
121.8 275.8
NELLIS TOWER
132.55 327.0
NELLIS DEP CON
135.1 385.4
LOS ANGELES CENTER
124.2 134.65 307.9 343.6

MORMON MESA
114.3 MMM
Chan 90
L-9, H-3

RADAR REQUIRED ABOVE FL190

- ① 1.24 NM from Rwy 21R
- ② 12.40 NM from Rwy 21L
- ③ 5.71 NM from Rwy 31L
- ④ 4.81 NM from Rwy 3R

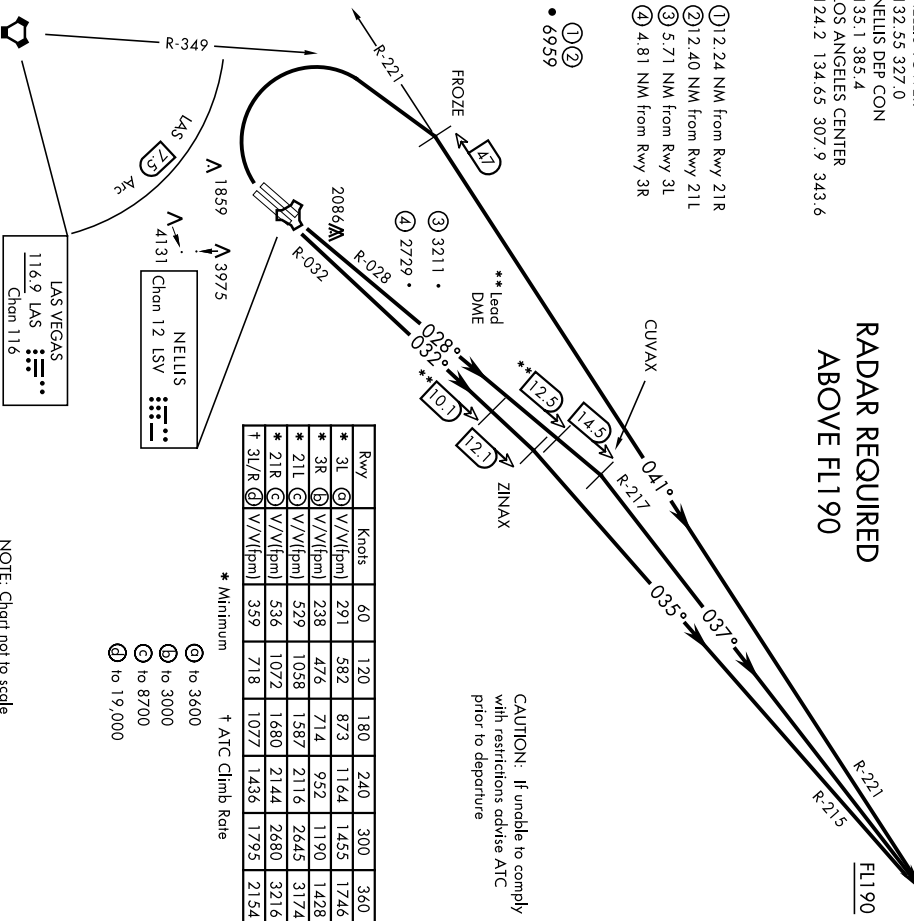
- ①②
- 6959

CAUTION: If unable to comply with restrictions advise ATC prior to departure

Rwy	Knots	60	120	180	240	300	360
* 3L	V/V(fpm)	291	582	873	1164	1455	1746
* 3R	V/V(fpm)	238	476	714	952	1190	1428
* 21L	V/V(fpm)	529	1058	1587	2116	2645	3174
* 21R	V/V(fpm)	536	1072	1680	2144	2680	3216
† 3L/R	V/V(fpm)	359	718	1077	1436	1795	2154

* Minimum † ATC Climb Rate

- ③ to 3600
- ④ to 3000
- ⑤ to 8700
- ⑥ to 19,000



NOTE: Chart not to scale

DEPARTURE ROUTE DESCRIPTION

TAKE-OFF Rwy 3L: Fly runway heading to intercept LSV TACAN R-028 then direct CUVAX, intercept the MMM VORTAC R-217 then direct MMM climbing to FL190 or as assigned, then via assigned route.

TAKE-OFF Rwy 3R: Fly runway heading to intercept LSV TACAN R-032 then direct ZINAX, intercept the MMM VORTAC R-215 then direct MMM climbing to FL190 or as assigned, then via assigned route.

TAKE-OFF Rwy 21L/R: Turn right to intercept MMM VORTAC R-221 prior to MMM 47 DME (FROZE), remain north of the LAS VORTAC 7.5 DME, remain East of LAS R-349, intercept MMM R-221 then direct MMM, cross MMM at or above FL190 then via assigned route.

NOISE ABATEMENT PROCEDURES: Fly LAW Nellis Noise Abatement instructions published in AP/1.

WORMON MESA SEVEN DEPARTURE (MMM7 • MMM)

LAS VEGAS, NEVADA
NELLIS AFB (KLSV)