

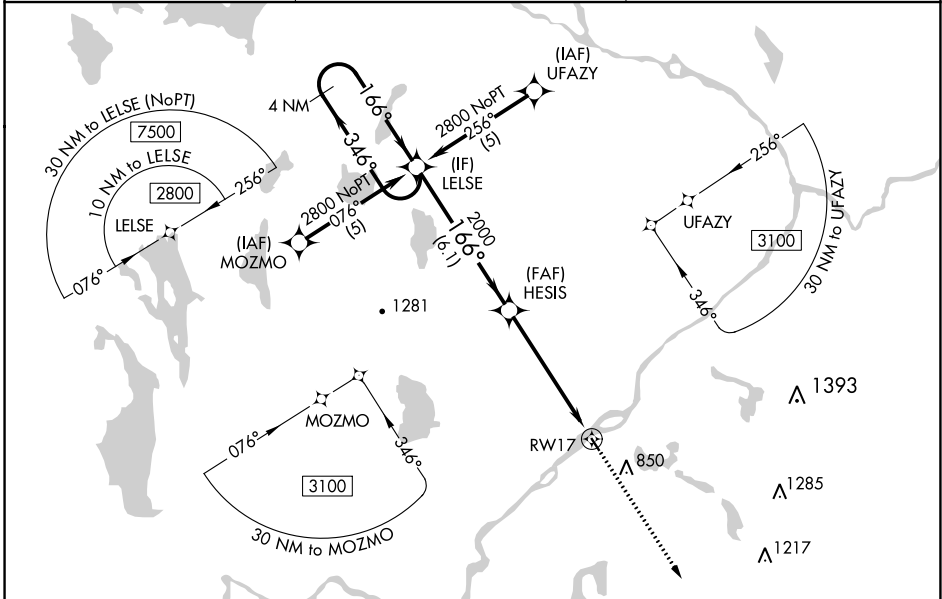
APP CRS	Rwy Idg	2804
166°	TDZE	208
	Apt Elev	208

RNAV (GPS) RWY 17

LINCOLN RGNL (L.R.G)

RNP APCH.	Use Millinocket Muni altimeter setting, when not received use Bangor altimeter setting and increase all MDA 20 feet. Procedure NA at night. Rwy 17 helicopter visibility reduction below 1 SM NA.	MISSED APPROACH: Climb to 3100 direct LADNE and hold.
-----------	--	---

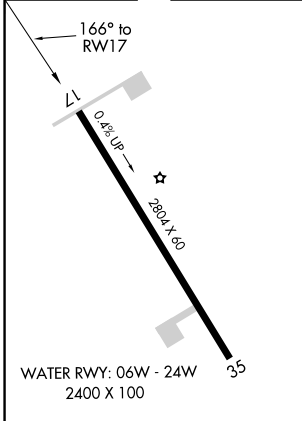
MLT ASOS 135.225	BOSTON CENTER 124.25 290.5	UNICOM 122.8 (CTAF) 0
----------------------------	--------------------------------------	---------------------------------



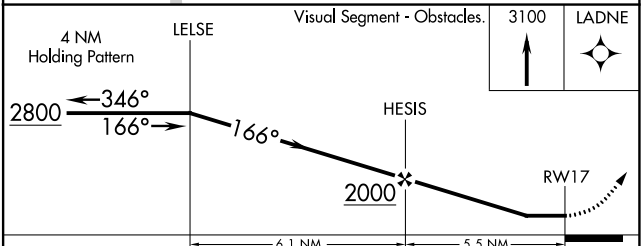
NE-1, 11 AUG 2022 to 08 SEP 2022

NE-1, 11 AUG 2022 to 08 SEP 2022

ELEV 208	TDZE 208
----------	----------



MIRL Rwy 17-35 **0**
REIL Rwy 17 and 35 **0**



CATEGORY	A	B	C	D
RNAV MDA	980-1 772 (800-1)	980-1¼ 772 (800-1¼)	NA	

WAAS CH 45736 W35A	APP CRS 346°	Rwy Idg TDZE Apt Elev	2804 208 208
--	------------------------	-----------------------------	---

RNAV (GPS) RWY 35

LINCOLN RGNL (L.R.G)

RNP APCH.

▼ Procedure NA at night. Use Millinocket altimeter setting; when not received, use Bangor Intl altimeter setting and increase all MDA 20 feet. Helicopter visibility reduction below 1 SM NA.

⚠ NA

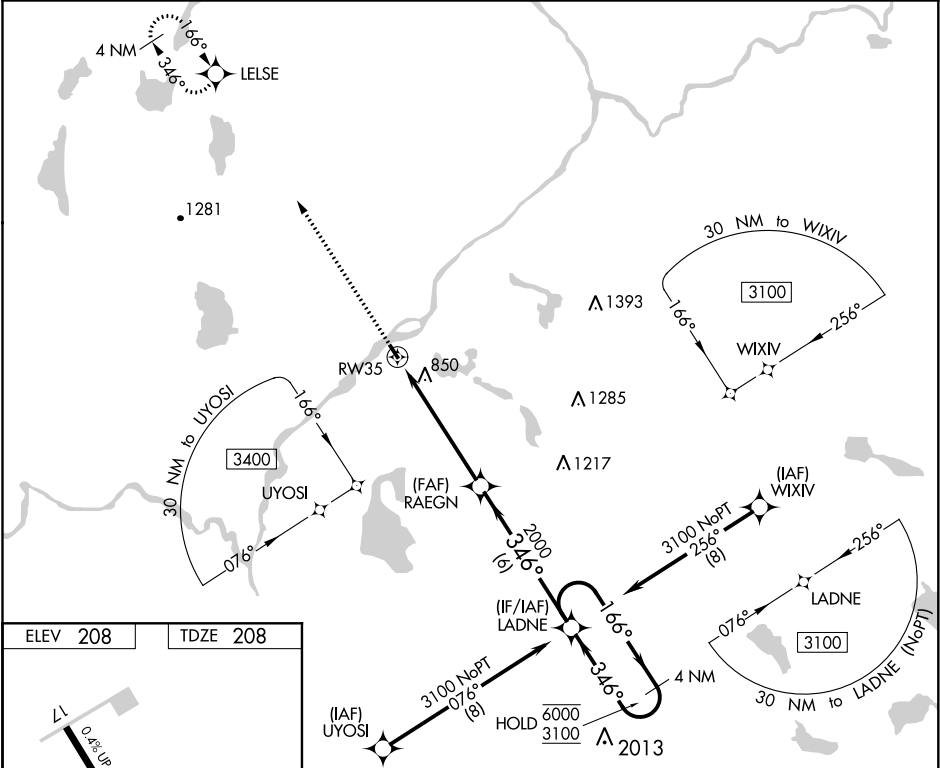
☄ -31°C/-24°F

MISSED APPROACH:
Climb to 2800 direct
LELSE and hold.

MLT ASOS
135.225

BOSTON CENTER
124.25 290.5

UNICOM
122.8 (CTAF) 1



ELEV 208	TDZE 208
----------	----------

WATER RWY: 06W - 24W
2400 X 100

MIRL Rwy 17-35 1
REIL Rws 17 and 35 1

2800	LELSE	Visual Segment - Obstacles.			
		RAEGN		LADNE	4 NM Holding Pattern
		6000		3100	
		166° →		← 346°	
		RW35		2000	
		5.5 NM		6 NM	
CATEGORY	A	B	C	D	
LP MDA	1120-1¼	912 (1000-1¼)	NA		
LNAV MDA	1200-1¼ 992 (1000-1¼)	1200-1½ 992 (1000-1½)	NA		
CIRCLING	1240-1¼ 1032 (1100-1¼)	1240-1½ 1032 (1100-1½)	NA		

NE-1, 11 AUG 2022 to 08 SEP 2022

NE-1, 11 AUG 2022 to 08 SEP 2022