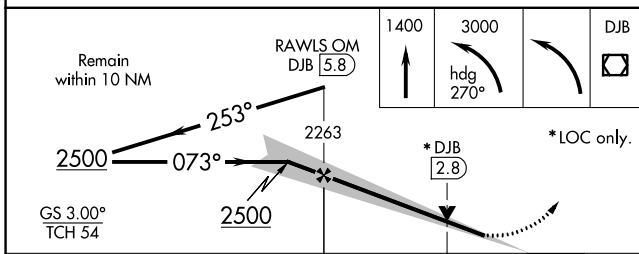
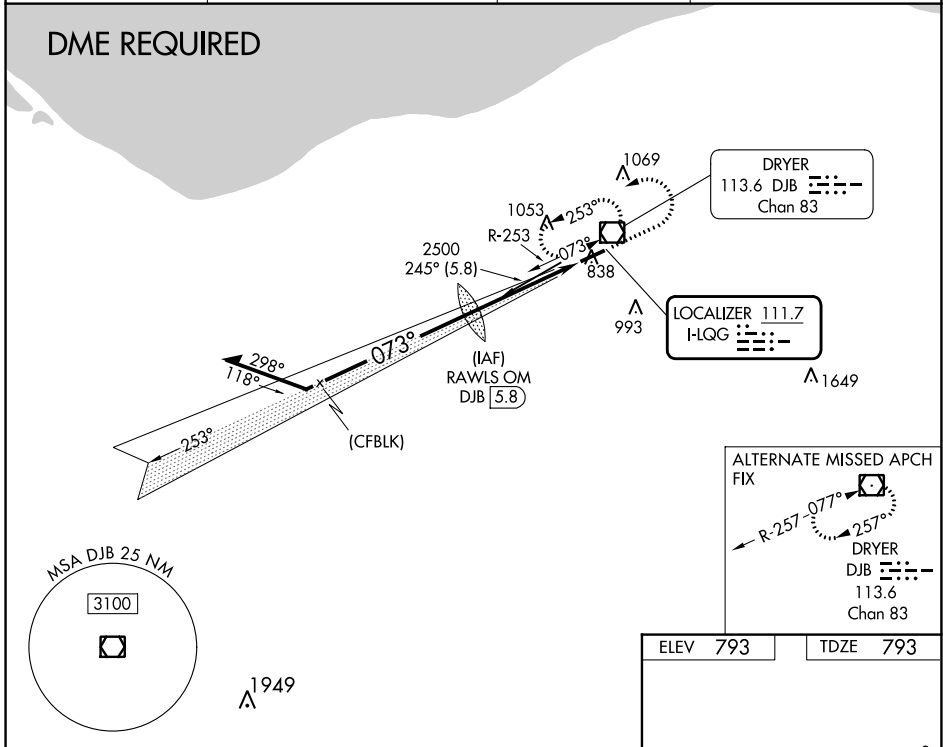


LOC I-LQG 111.7	APP CRS 073°	Rwy Idg 5002
		TDZE 793
		Apt Elev 793

ILS or LOC RWY 7
LORAIN COUNTY RGNL (LPR)

<p>⚠ For inoperative MALSR, increase S-LOC 7 Cats C/D visibility to 1 3/8 mile. ⚠ VDP NA with Cleveland-Hopkins Intl altimeter setting. When local altimeter setting not received, use Cleveland-Hopkins Intl altimeter setting and increase all DA 36 feet and all MDA 40 feet.</p>	<p>MALSR</p>	<p>MISSED APPROACH: Climb to 1400 then climbing left turn to 3000 on heading 270° then left turn direct DJB VOR/DME and hold.</p>
--	---------------------	--

ASOS 118.925	CLEVELAND APP CON 125.35 346.325	CLNC DEL 125.7	UNICOM 122.7 (CTAF) 0
------------------------	--	--------------------------	---------------------------------



ELEV 793	TDZE 793
REIL Rwy 25 0	HIRL Rwy 7-25 0
FAF to MAP 4.4 NM	
Knots	60 90 120 150 180
Min:Sec	4:24 2:56 2:12 1:46 1:28

CATEGORY	A	B	C	D
S-ILS 07	993-1/2 200 (200-1/2)			
S-LOC 07	1280-1/2 487 (500-1/2)	1280-1 487 (500-1)		
C CIRCLING	1280-1 487 (500-1)	1360-1 567 (600-1)	1420-1 3/4 627 (700-1 3/4)	1420-2 627 (700-2)

EC-2, 22 FEB 2024 to 21 MAR 2024

EC-2, 22 FEB 2024 to 21 MAR 2024

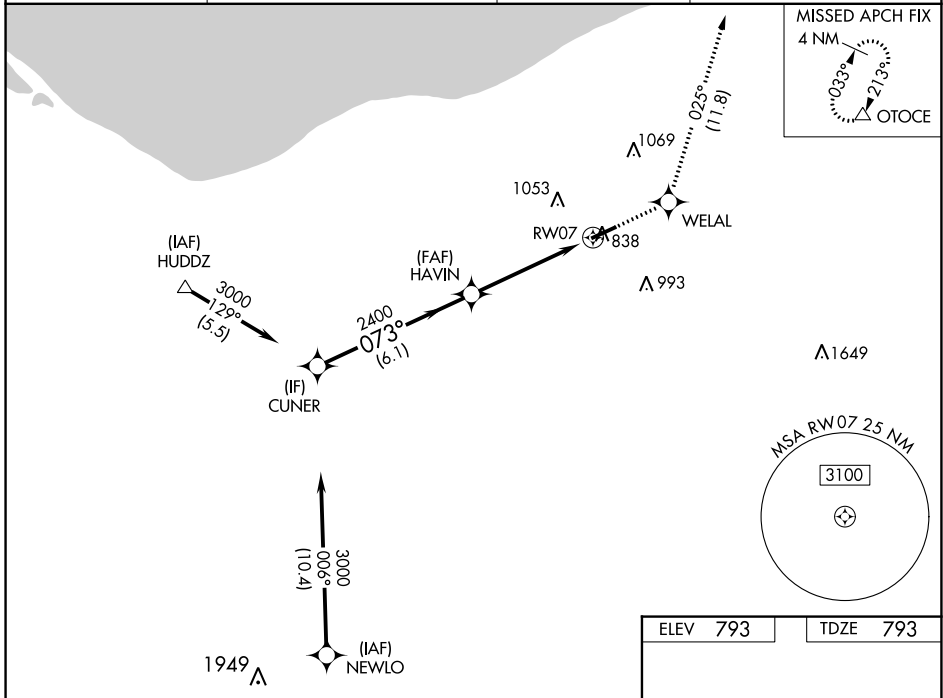
WAAS CH 99612 W07A	APP CRS 073°	Rwy Idg TDZE Apt Elev	5002 793 793
--	------------------------	-----------------------------	---

RNAV (GPS) RWY 7

LORAIN COUNTY RGNL (L.P.R.)

RNP APCH.	MALS R	MISSED APPROACH: Climb to 3000 direct WELAL and on track 025° to OTOCE and hold.
For uncompensated Baro-VNAV systems, LNAV/VNAV NA below -16°C (4°F) or above 54°C (130°F).		

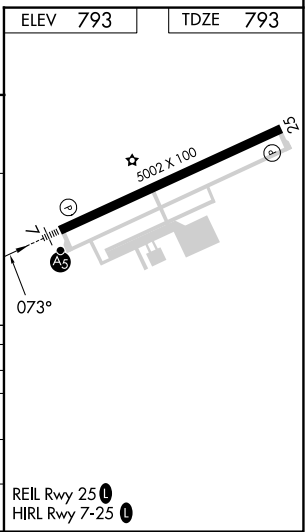
ASOS 118.925	CLEVELAND APP CON 125.35 346.325	CLNC DEL 125.7	UNICOM 122.7 (CTAF)
------------------------	--	--------------------------	-------------------------------



EC-2, 22 FEB 2024 to 21 MAR 2024

EC-2, 22 FEB 2024 to 21 MAR 2024

CUNER	HAVIN		WELAL	tr 025°	OTOCE
3000	073°	2400			
GP 3.00° TCH 54		*1.5 NM to RWY 7			
6.1 NM		3.3 NM	1.5 NM	*LNAV only	
CATEGORY	A	B	C	D	
LPV DA	993-½		200 (200-½)		
LNAV/VNAV DA	1133-¾		340 (400-¾)		
LNAV MDA	1340-½ 547 (600-½)		1340-1 5/8 547 (600-1 5/8)		
CIRCLING	1340-1 547 (600-1)	1360-1 567 (600-1)	1420-1 3/4 627 (700-1 3/4)	1420-2 627 (700-2)	



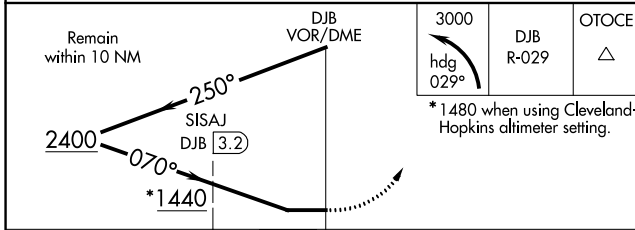
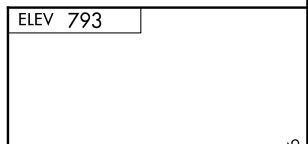
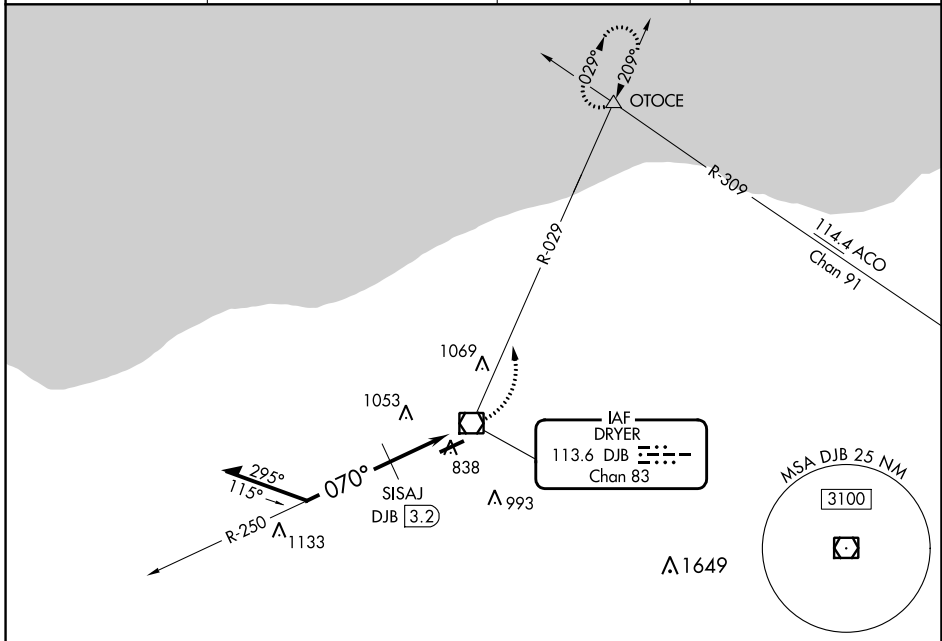
VOR/DME DJB 113.6 Chan 83	APP CRS 070°	Rwy Idg TDZE Apt Elev	N/A N/A 793
---	------------------------	-----------------------------	--

VOR-A
LORAIN COUNTY RGNL (L.P.R.)

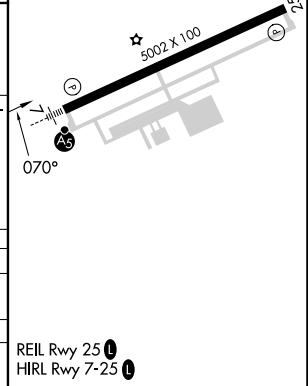
▼ When local altimeter setting not received, use Cleveland-Hopkins Intl altimeter setting and increase all MDA 40 feet, increase circling Cat C/D visibility ¼ mile.

MISSED APPROACH: Climbing left turn to 3000 via heading 029° and DJB VOR/DME R-029 direct OTOCE INT and hold.

ASOS 118.925	CLEVELAND APP CON 125.35 346.325	CLNC DEL 125.7	UNICOM 122.7 (CTAF) 0
------------------------	--	--------------------------	--



CATEGORY	A	B	C	D
C CIRCLING	1440-1	647 (700-1)	1440-1¾ 647 (700-1¾)	1440-2 647 (700-2)
SISAJ DME MINIMUMS				
C CIRCLING	1300-1 507 (600-1)	1360-1 567 (600-1)	1420-1¾ 627 (700-1¾)	1420-2 627 (700-2)



EC-2, 22 FEB 2024 to 21 MAR 2024

EC-2, 22 FEB 2024 to 21 MAR 2024