

LOC I-FLK <b>111.3</b>	APP CRS <b>073°</b>	Rwy Idg 5400
		TDZE 287
		Apt Elev 296

# ILS or LOC RWY 7

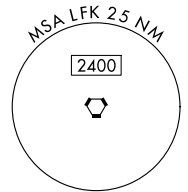
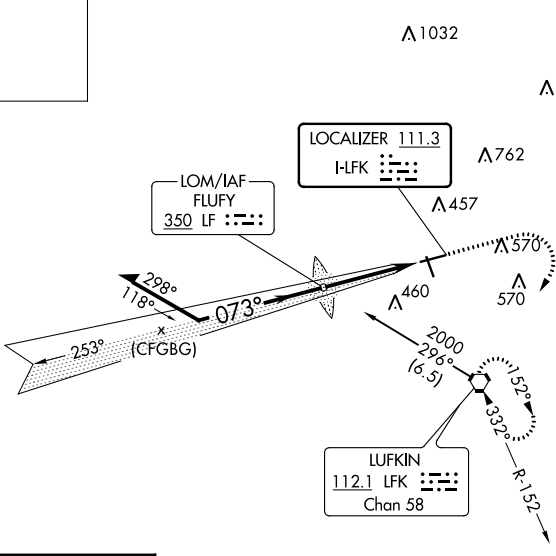
ANGELINA COUNTY (LFLK)

<p><b>NA</b></p> <p>Circling Rwy 16, 25 NA at night.</p>	<p>MALSR</p>	<p>MISSED APPROACH: Climb to 800 then climbing right turn to 2000 direct LFK VORTAC and hold, continue climb-in-hold.</p>
--	--------------	---

ASOS <b>120.625</b>	HOUSTON CENTER <b>125.175 285.575</b>	UNICOM <b>123.0</b> (CTAF) <b>0</b>
------------------------	--	--

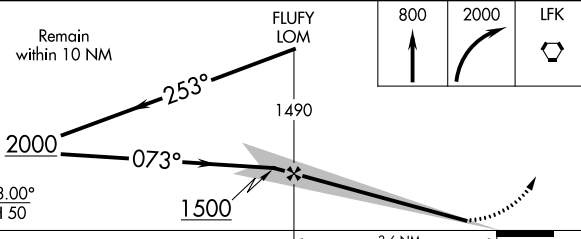
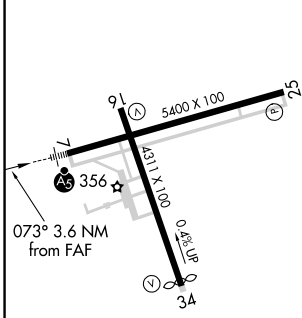
ALTERNATE MISSED APCH

FLUFY  
350 LF : :: ::



Procedure NA for arrival on LFK VORTAC  
airway radials 245 CW 354.

ELEV 296	TDZE 287
----------	----------



MIRL Rws 7-25 and 16-34 <b>0</b>					
FAF to MAP 3.6 NM					
Knots	60	90	120	150	180
Min:Sec	3:36	2:24	1:48	1:26	1:12
<b>CIRCLING</b>	740-1 444 (500-1)	760-1 464 (500-1)	880-1½ 584 (600-1½)	1140-2¾ 844 (900-2¾)	

LUFKIN, TEXAS  
Amdt 3 07DEC17

31°14'N-94°45'W

# ANGELINA COUNTY (LFLK)

## ILS or LOC RWY 7

SC-5, 22 FEB 2024 to 21 MAR 2024

SC-5, 22 FEB 2024 to 21 MAR 2024

APP CRS <b>158°</b>	Rwy Idg TDZE Apt Elev	<b>4311</b> <b>289</b> <b>296</b>
------------------------	-----------------------------	---

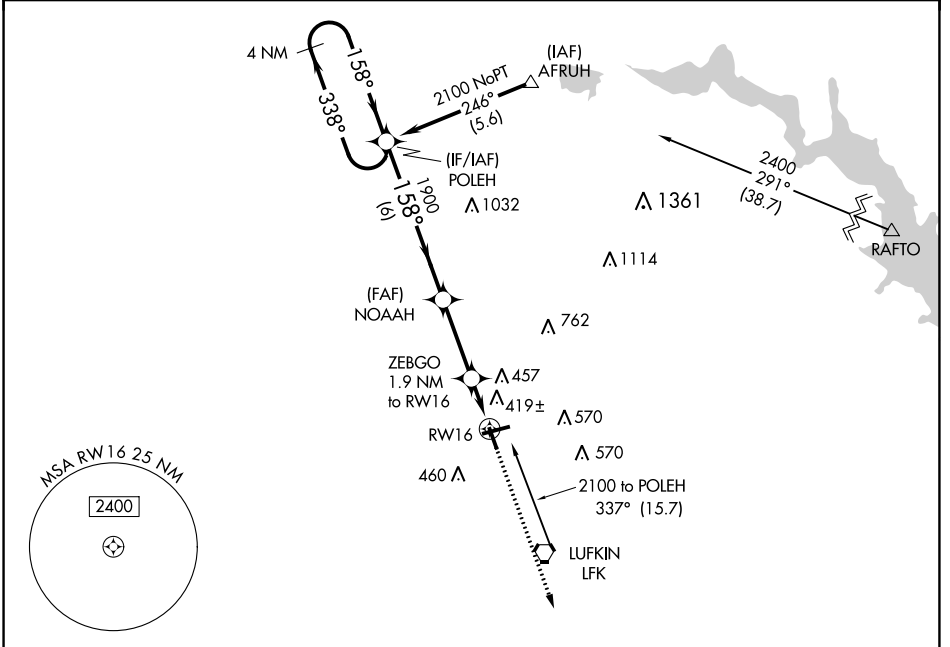
# RNAV (GPS) RWY 16

ANGELINA COUNTY (L'FK)

**⚠** DME/DME RNP-0.3 NA.  
**⚠** Straight in Rwy 16 NA at night, Circling Rwy 16, 25 NA at night.  
 Rwy 16 helicopter visibility reduction below 1 SM NA.

MISSED APPROACH: Climb to 2000 direct EXISE and hold.

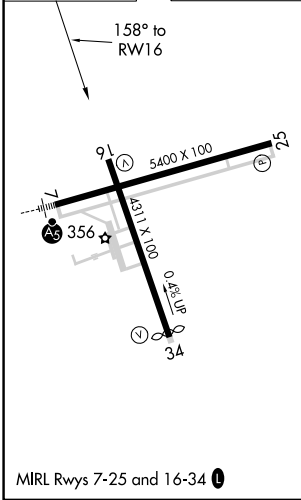
ASOS <b>120.625</b>	HOUSTON CENTER <b>125.175 285.575</b>	UNICOM <b>123.0 (CTAF) 0</b>
------------------------	--	---------------------------------



SC-5, 22 FEB 2024 to 21 MAR 2024

SC-5, 22 FEB 2024 to 21 MAR 2024

ELEV 296	TDZE 289
----------	----------



4 NM Holding Pattern	POLEH	2000	EXISE	
2100	← 338°	→ 158°		
	1900			
		NOAAH		
			ZEBGO 1.9 NM to RW16	
			RW16	
		3.00' ≥ TCH 48	940	
	6 NM	3 NM	1.9 NM	
CATEGORY	A	B	C	D
LNAV MDA	680-1	391 (400-1)	680-1½	391 (400-1½)
<b>C</b> CIRCLING	740-1 444 (500-1)	760-1 464 (500-1)	880-1½ 584 (600-1½)	1140-2¾ 844 (900-2¾)

LUFKIN, TEXAS  
 Amdt 1 07DEC17

31°14'N-94°45'W

# ANGELINA COUNTY (L'FK)

## RNAV (GPS) RWY 16

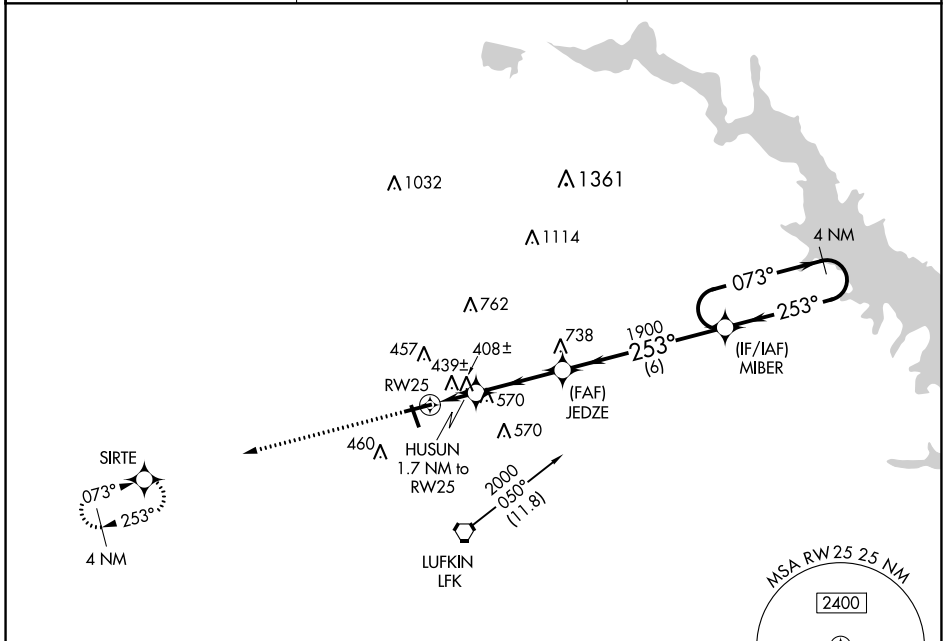
WAAS CH <b>72641</b> <b>W25A</b>	APP CRS <b>253°</b>	Rwy Idg TDZE Apt Elev	<b>5400</b> <b>296</b> <b>296</b>
--	------------------------	-----------------------------	---

# RNAV (GPS) RWY 25

ANGELINA COUNTY (L'FK)

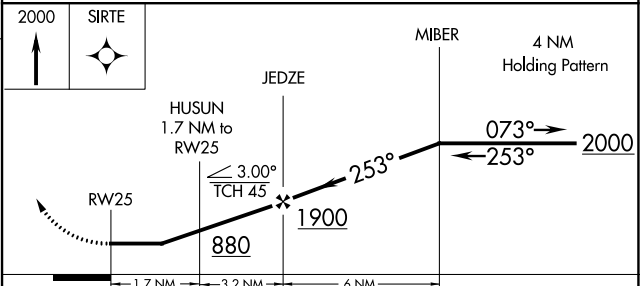
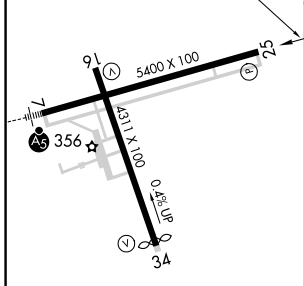
**V** **A** **W** DME/DME RNP-0.3 NA. Straight-in Rwy 25 NA at night, Circling Rwy 16, 25 NA at night. Rwy 25 helicopter visibility reduction below 1 SM NA. MISSED APPROACH: Climb to 2000 direct SIRTE and hold.

ASOS <b>120.625</b>	HOUSTON CENTER <b>125.175 285.575</b>	UNICOM <b>123.0</b> (CTAF) <b>0</b>
------------------------	--	--



ELEV 296	TDZE 296
----------	----------

Procedure NA for arrivals on LFK VORTAC airway radials 354 CW 082.



CATEGORY	A	B	C	D
LP MDA	660-1		364 (400-1)	
LNVA MDA	700-1	404 (500-1)	700-1½	404 (500-1½)
<b>C</b> CIRCLING	740-1 444 (500-1)	760-1 464 (500-1)	880-1½ 584 (600-1½)	1140-2¾ 844 (900-2¾)

SC-5, 22 FEB 2024 to 21 MAR 2024

SC-5, 22 FEB 2024 to 21 MAR 2024

APP CRS <b>338°</b>	Rwy Idg <b>4204</b>
	TDZE <b>286</b>
	Apt Elev <b>296</b>

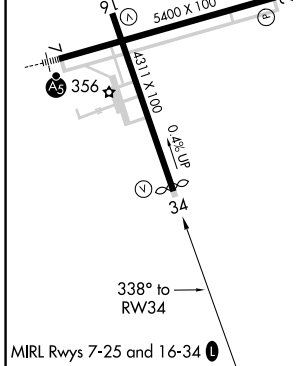
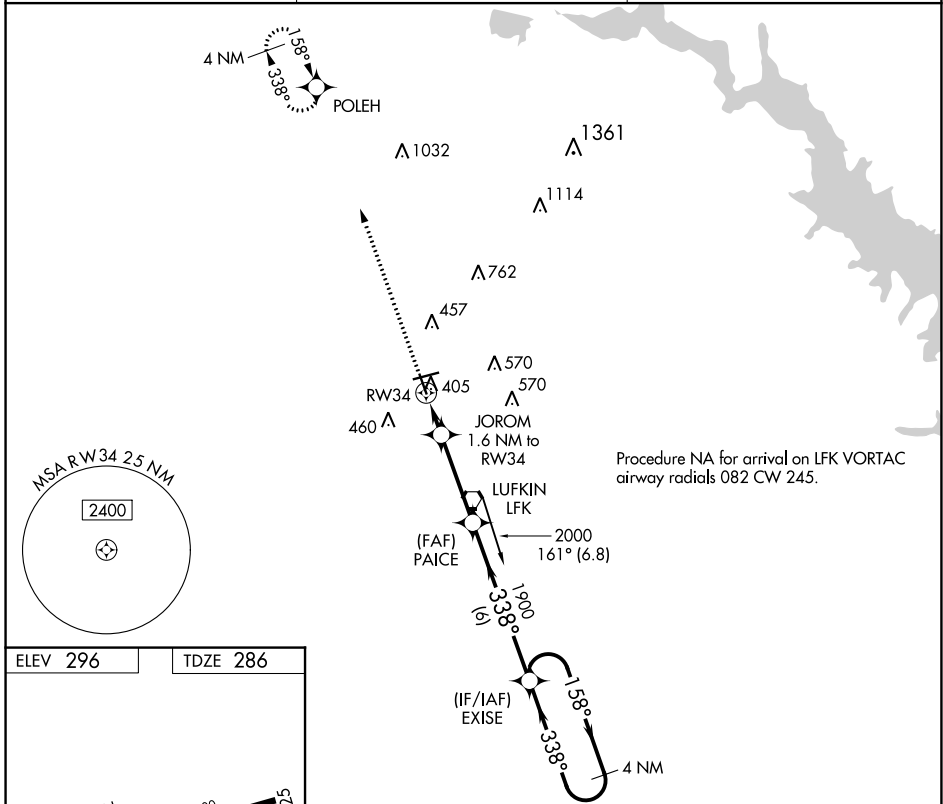
# RNAV (GPS) RWY 34

ANGELINA COUNTY (L<sup>FL</sup>K)

**▼** DME/DME RNP-0.3 NA. Circling Rwy 16, 25 NA at night.  
**▲** Rwy 34 helicopter visibility reduction below ¾ SM NA.

MISSED APPROACH: Climb to 2100 direct POLEH and hold.

ASOS <b>120.625</b>	HOUSTON CENTER <b>125.175 285.575</b>	UNICOM <b>123.0 (CTAF) 0</b>
------------------------	--	---------------------------------



ELEV 296	TDZE 286			
2100 POLEH	EXISE 4 NM Holding Pattern			
JOROM 1.6 NM to RW34	PAICE			
1 NM to RW34	3.00° TCH 55			
840	1900			
1 NM	0.6	3.3 NM	6 NM	
CATEGORY	A	B	C	D
LNAV MDA	660-1 374 (400-1)			
<b>CIRCLING</b>	740-1 444 (500-1)	760-1 464 (500-1)	880-1½ 584 (600-1½)	1140-2¾ 844 (900-2¾)


SC-5, 22 FEB 2024 to 21 MAR 2024

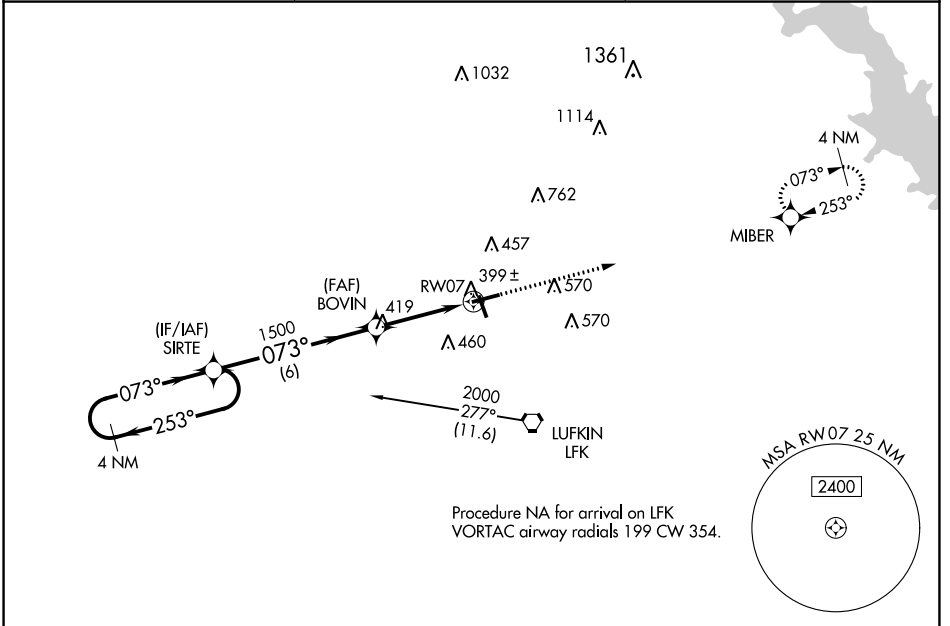
SC-5, 22 FEB 2024 to 21 MAR 2024

WAAS CH <b>50105</b> <b>W07A</b>	APP CRS <b>073°</b>	Rwy Idg TDZE Apt Elev	<b>5400</b> <b>287</b> <b>296</b>
--	------------------------	-----------------------------	---

# RNAV (GPS) RWY 7

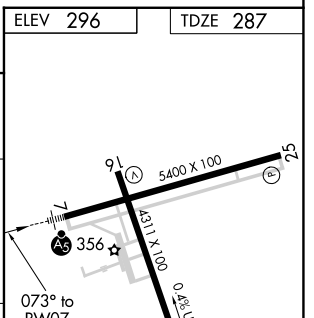
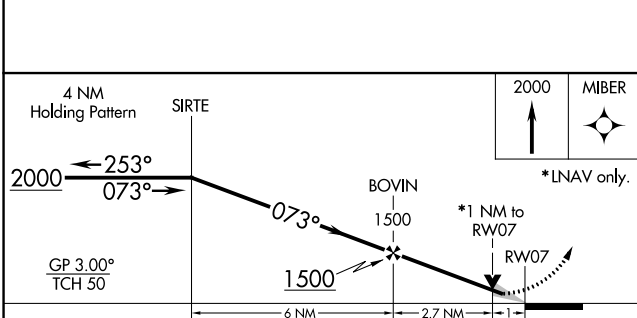
ANGELINA COUNTY (L.F.K)

<p><b>▼</b> For uncompensated Baro-VNAV systems, LNAV/VNAV NA below -4°C (25°F) or above 54°C (130°F). DME/DME RNP-0.3 NA. Circling Rwy 16, 25 NA at night.</p>	<p>MALSR</p> 	<p>MISSED APPROACH: Climb to 2000 direct MIBER and hold.</p>
<p>ASOS <b>120.625</b></p>	<p>HOUSTON CENTER <b>125.175 285.575</b></p>	<p>UNICOM <b>123.0 (CTAF) 0</b></p>

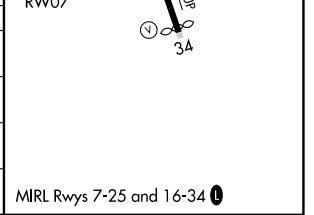


SC-5, 22 FEB 2024 to 21 MAR 2024

SC-5, 22 FEB 2024 to 21 MAR 2024



ELEV 296	TDZE 287			
4 NM Holding Pattern	SIRTE			
2000 ← 253°	→ 073°			
GP 3.00° TCH 50				
	BOVIN 1500			
	*1 NM to RW07			
	RW07			
	6 NM			
	2.7 NM			
	1 NM			
CATEGORY	A	B	C	D
LPV DA		537-½	250 (300-½)	
LNAV/VNAV DA		563-½	276 (300-½)	
LNAV MDA	660-½	373 (400-½)	660-⅝	373 (400-⅝)
<b>C</b> CIRCLING	740-1 444 (500-1)	760-1 464 (500-1)	880-1½ 584 (600-1½)	1140-2¾ 844 (900-2¾)



VORTAC LFK	Rwy Idg	<b>4311</b>
<b>112.1</b>	TDZE	<b>289</b>
Chan <b>58</b>	Apt Elev	<b>296</b>
APP CRS		
<b>152°</b>		

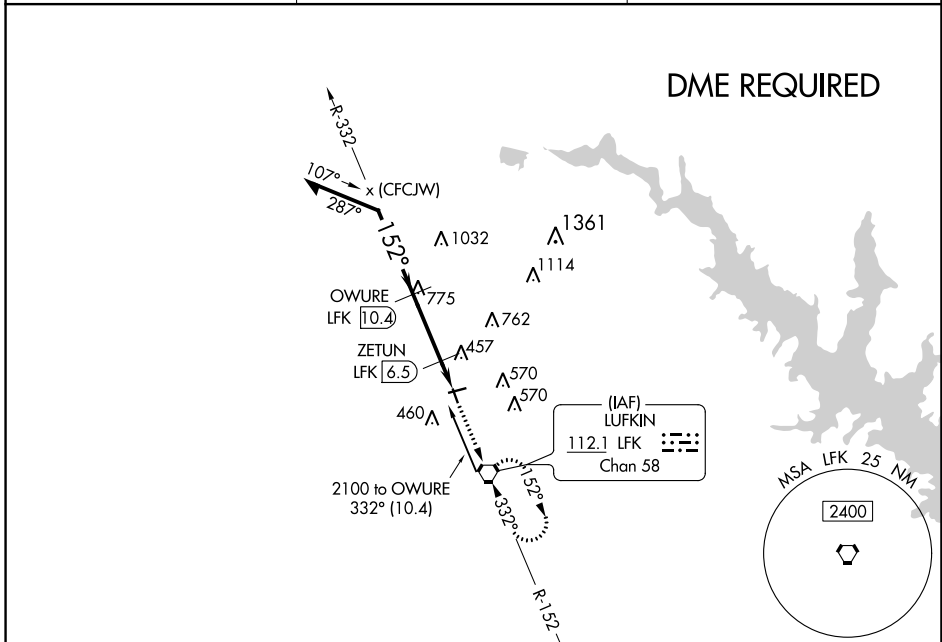
# VOR RWY 16

ANGELINA COUNTY (L'FK)

**⚠** Rwy 16 helicopter visibility reduction below 1 SM NA.  
**⚠** DME Required. Straight-in Rwy 16 NA at night, Circling Rwy 16, 25 NA at night.

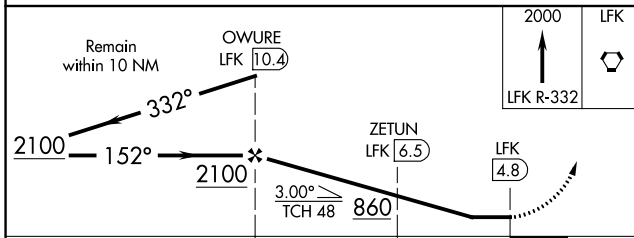
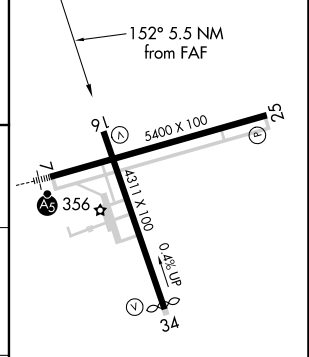
MISSED APPROACH: Climb to 2000 on LFK VORTAC R-332 to LFK VORTAC and hold.

ASOS <b>120.625</b>	HOUSTON CENTER <b>125.175 285.575</b>	UNICOM <b>123.0</b> (CTAF) <b>0</b>
------------------------	--	--



**DME REQUIRED**

ELEV	296	TDZE	289
------	-----	------	-----



CATEGORY	A	B	C	D
S-16	720-1	431 (500-1)	720-1¼	431 (500-1¼)
<b>C</b> CIRCLING	740-1 444 (500-1)	760-1 464 (500-1)	880-1½ 584 (600-1½)	1140-2¾ 844 (900-2¾)

MIRL Rwy 7-25 and 16-34 **0**

SC-5, 22 FEB 2024 to 21 MAR 2024

SC-5, 22 FEB 2024 to 21 MAR 2024

VORTAC LFK <b>112.1</b> Chan <b>58</b>	APP CRS <b>332°</b>	Rwy Idg TDZE <b>286</b> Apt Elev <b>296</b>
--	------------------------	---

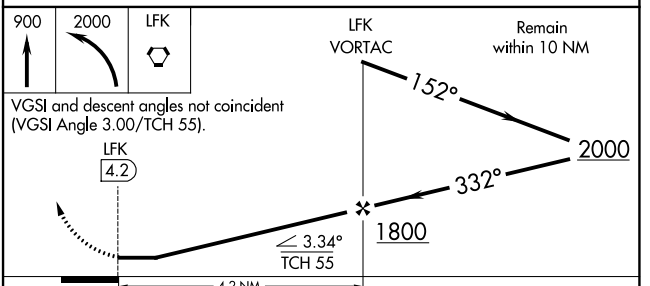
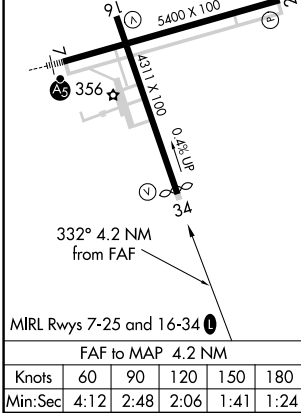
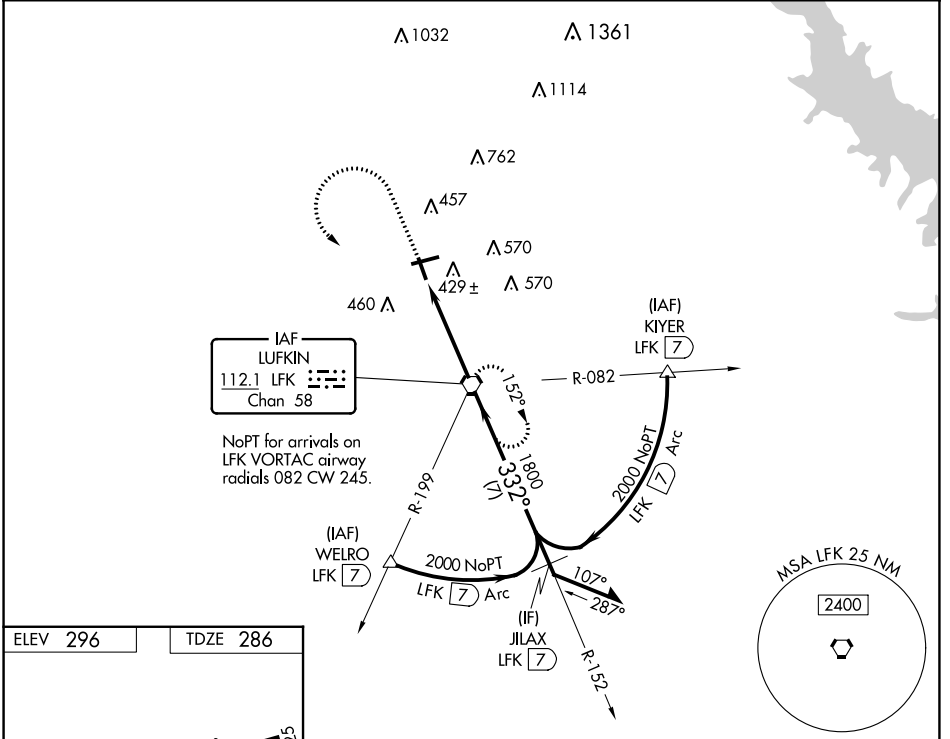
# VOR RWY 34

ANGELINA COUNTY (L'FK)

**▼** Rwy 34 helicopter visibility reduction below 1 SM NA.  
**▲** Straight-In Rwy 34 NA at night, Circling to Rwy 16, 25, 34 NA at night.

MISSED APPROACH: Climb to 900 then descending left turn to 2000 direct LFK VORTAC and hold.

ASOS <b>120.625</b>	HOUSTON CENTER <b>125.175 285.575</b>	UNICOM <b>123.0</b> (CTAF) <b>0</b>
------------------------	--	--



CATEGORY	A	B	C	D
S-34	680-1	394 (400-1)	680-1½	394 (400-1½)
<b>☐</b> CIRCLING	740-1 444 (500-1)	760-1 464 (500-1)	880-1½ 584 (600-1½)	1140-2¾ 844 (900-2¾)

SC-5, 22 FEB 2024 to 21 MAR 2024

SC-5, 22 FEB 2024 to 21 MAR 2024