

NDB RWY 28

LAKE CITY GATEWAY (LCQ)

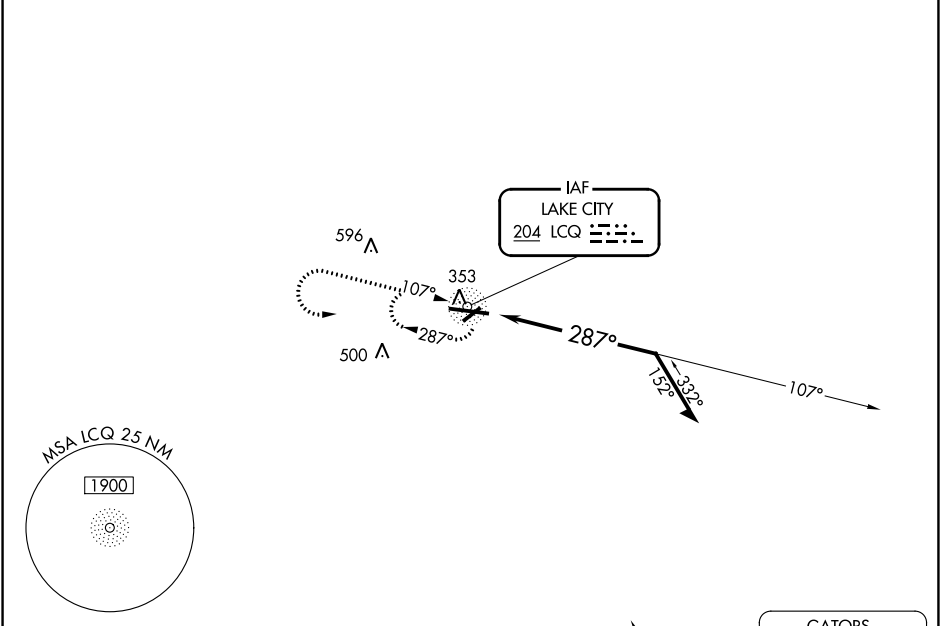
NDB LCQ 204	APP CRS 287°	Rwy ldg 8003 TDZE 196 Apt Elev 201
-----------------------	------------------------	--

▼ Circling to Rwy 10 NA at night. When local altimeter setting not received, use Gainesville altimeter setting and increase all MDA 100 feet, and increase S-28 Cats C/D and Circling Cat C visibility ¼ mile. Helicopter visibility reduction below ¼ SM not authorized.

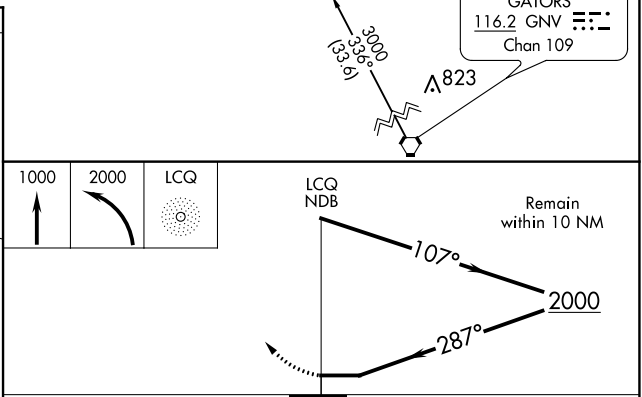
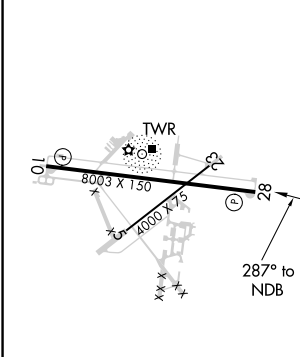
▲ NA

MISSED APPROACH: Climb to 1000 then climbing left turn to 2000 direct LCQ NDB LOM and hold.

AWOS-3 120.675	JACKSONVILLE CENTER 125.375 254.325	LAKE CITY TOWER ★ 119.2 (CTAF) 0 314.6	GND CON 121.9	UNICOM 122.95
--------------------------	---	--	-------------------------	-------------------------



ELEV 201	TDZE 196
----------	----------



CATEGORY	A	B	C	D
S-28	760-1	564 (600-1)	760-1½	564 (600-1½)
CIRCLING	760-1	559 (600-1)	760-1½ 559 (600-1½)	760-2 559 (600-2)

LAKE CITY, FLORIDA
Amdt 2A 02MAY13

30°11'N-82°35'W

LAKE CITY GATEWAY (LCQ)
NDB RWY 28

SE-3, 05 NOV 2020 to 03 DEC 2020

SE-3, 05 NOV 2020 to 03 DEC 2020

APP CRS 100°	Rwy Idg TDZE Apt Elev	8003 201 201
------------------------	-----------------------------	---

RNAV (GPS) RWY 10

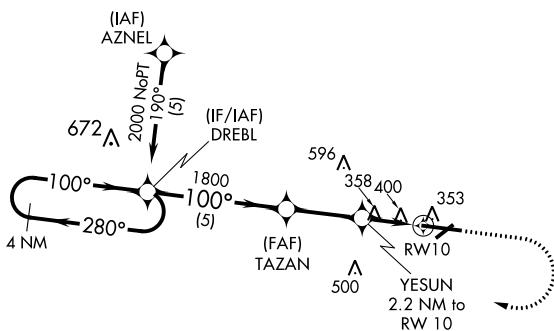
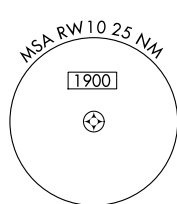
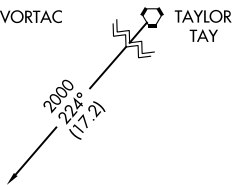
LAKE CITY GATEWAY (LCQ)

⚠ When local altimeter setting not received, use Gainesville altimeter setting and increase all MDA 100 feet and increase LNAV Cat C/D and Circling Cat C visibility ¼ mile. DME/DME RNP-0.3 NA. Procedure NA at night. Helicopter visibility reduction below 1 SM NA.

⚠ MISSED APPROACH: Climb to 800 then climbing right turn to 2000 direct DREBL and hold.

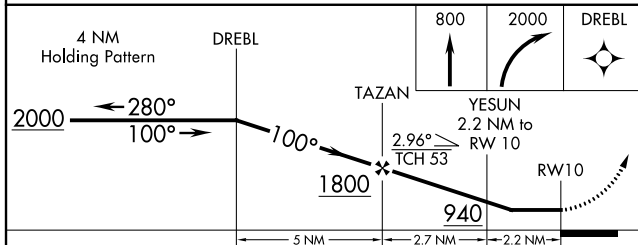
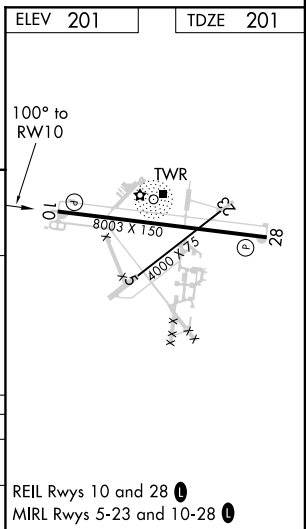
AWOS-3 120.675	JACKSONVILLE CENTER 125.375 254.325	LAKE CITY TOWER ★ 119.2 (CTAF) 0 314.6	GND CON 121.9	UNICOM 122.95
--------------------------	---	---	-------------------------	-------------------------

Procedure NA for arrivals on TAY VORTAC
airway radials 173 CW 276.



SE-3, 05 NOV 2020 to 03 DEC 2020

SE-3, 05 NOV 2020 to 03 DEC 2020



CATEGORY	A	B	C	D
LNAV MDA	700-1	499 (500-1)	700-1⅓	499 (500-1⅓)
CIRCLING	760-1	559 (600-1)	760-1½	760-2 559 (600-2)

WAAS CH 82008 W28A	APP CRS 280°	Rwy Idg 8003 TDZE 196 Apt Elev 201
--	------------------------	---

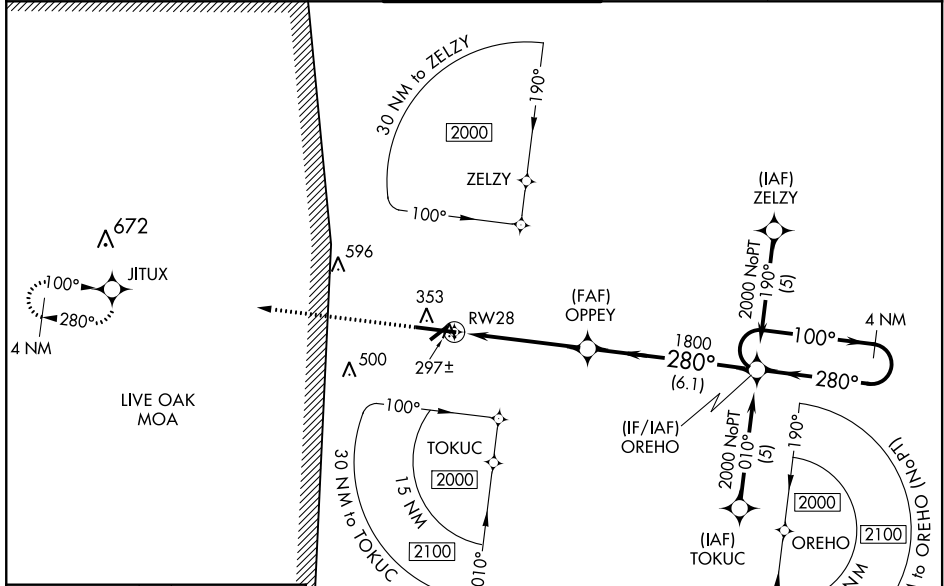
RNAV (GPS) RWY 28

LAKE CITY GATEWAY (LCQ)

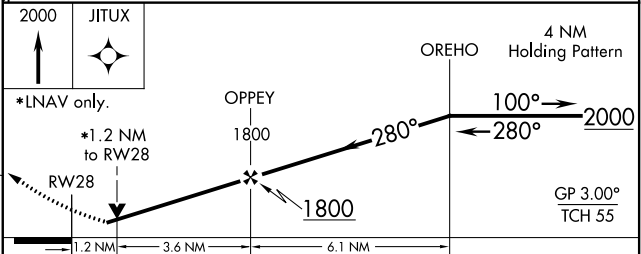
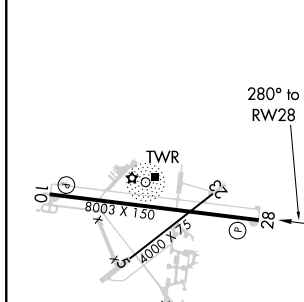
⚠ Baro-VNAV NA when using Gainesville altimeter setting. For uncompensated Baro-VNAV systems, LNAV/VNAV NA below -18°C (0°F) or above 54°C (130°F). DME/DME RNP-0.3 NA. When local altimeter setting not received, use Gainesville altimeter setting and increase LPV DA to 624, LNAV/VNAV DA to 640 and all MDA 100 feet, increase LPV all Cats visibility ¼ mile, LNAV/VNAV all Cats visibility ½ mile, LNAV Cat C/D visibility ¼ mile, and Circling Cat C visibility ½ mile. Circling to Rwy 10 NA at night. Helicopter visibility reduction below ¾ SM not authorized.

MISSED APPROACH:
Climb to 2000 direct
JITUX and hold.

AWOS-3 120.675	JACKSONVILLE CENTER 125.375 254.325	LAKE CITY TOWER ★ 119.2 (CTAF) 0 314.6	GND CON 121.9	UNICOM 122.95
--------------------------	---	--	-------------------------	-------------------------



ELEV 201	TDZE 196
----------	----------



CATEGORY	A	B	C	D
LPV DA	540-1 ½ 344 (400-1 ½)			
LNAV/VNAV DA	556-1 ½ 360 (400-1 ½)			
LNAV MDA	640-1 444 (500-1)		640-1 ¾ 444 (500-1 ½)	
CIRCLING	760-1 559 (600-1)		760-2 559 (600-2)	

REIL Rwy 10 and 28 **Ⓢ**
MIRL Rwy 5-23 and 10-28 **Ⓢ**

SE-3, 05 NOV 2020 to 03 DEC 2020

SE-3, 05 NOV 2020 to 03 DEC 2020