

NDB JYR <b>257</b>	APP CRS <b>153°</b>	Rwy Idg TDZE Apt Elev	<b>5898</b> <b>1665</b> <b>1670</b>
-----------------------	------------------------	-----------------------------	---

# NDB RWY 17

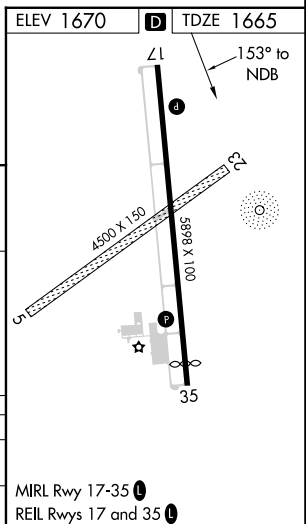
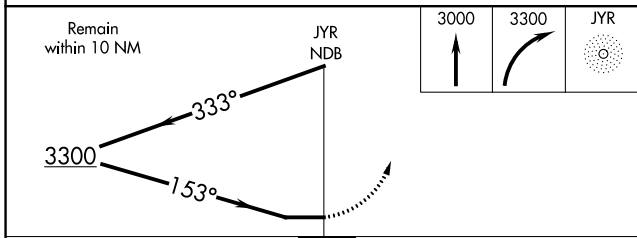
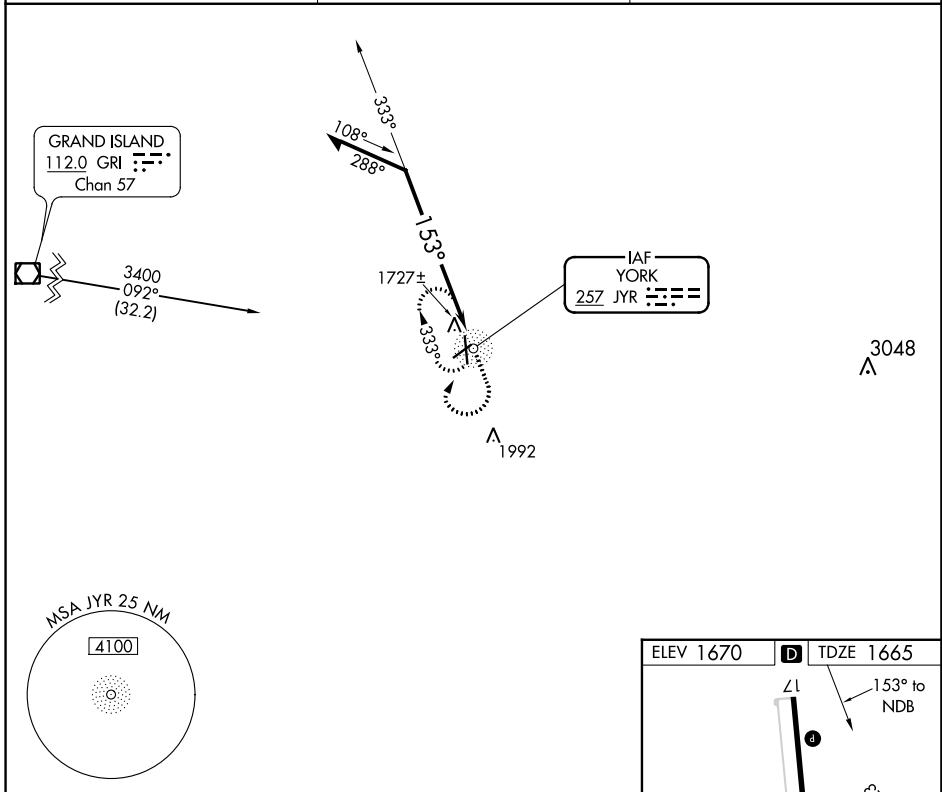
YORK MUNI (JYR)

**▽** When local altimeter setting not received, use Aurora altimeter setting and increase all MDA 60 feet, increase Straight-in and Circling visibilities Cat C ¼ mile. Visibility reduction by helicopters NA.

**△ NA**

MISSED APPROACH: Climb to 3000 then climbing right turn to 3300 direct JYR NDB and hold.

AWOS-3 <b>124.175</b>	MINNEAPOLIS CENTER <b>119.4 278.8</b>	UNICOM <b>122.8 (CTAF) 0</b>
--------------------------	--	---------------------------------



CATEGORY	A	B	C	D
S-17	2300-1	635 (700-1)	2300-1¾ 635 (700-1¾)	NA
CIRCLING	2300-1	630 (700-1)	2300-1¾ 630 (700-1¾)	NA

NC-2, 22 FEB 2024 to 21 MAR 2024

NC-2, 22 FEB 2024 to 21 MAR 2024

NDB JYR <b>257</b>	APP CRS <b>002°</b>	Rwy Idg TDZE Apt Elev	<b>5498</b> <b>1670</b> <b>1670</b>
-----------------------	------------------------	-----------------------------	---

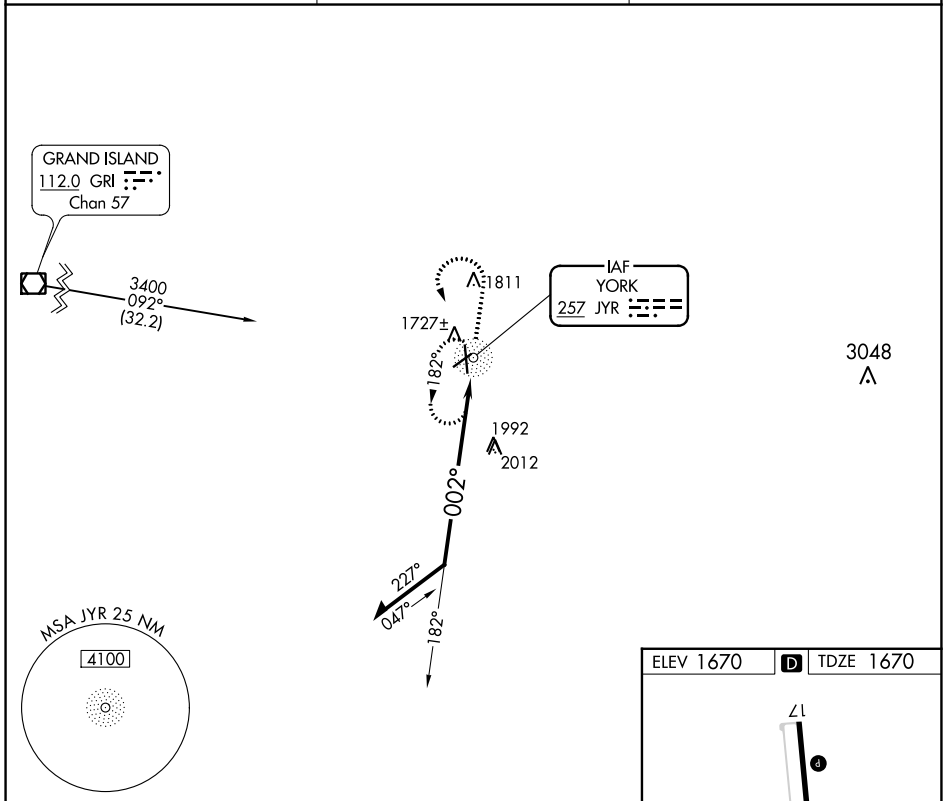
# NDB RWY 35

YORK MUNI (JYR)

**⚠ NA** When local altimeter setting not received, use Aurora altimeter setting and increase all MDA 60 feet.

MISSED APPROACH: Climb to 3000 then climbing left turn to 3300 direct JYR NDB and hold.

AWOS-3 <b>124.175</b>	MINNEAPOLIS CENTER <b>119.4 278.8</b>	UNICOM <b>122.8 (CTAF) 0</b>
--------------------------	--	---------------------------------

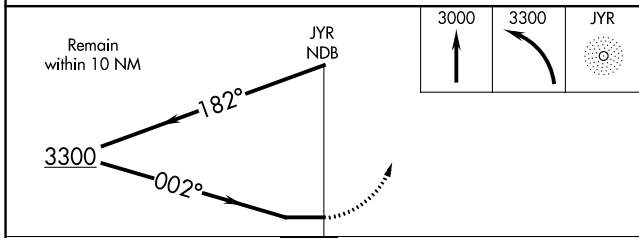
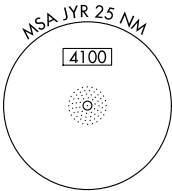


NC-2, 22 FEB 2024 to 21 MAR 2024

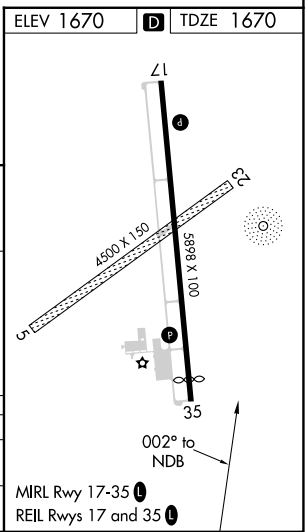
NC-2, 22 FEB 2024 to 21 MAR 2024

GRAND ISLAND  
112.0 GRI  
Chan 57

IAF  
YORK  
257 JYR



CATEGORY	A	B	C	D
S-35	2420-1 750 (800-1)	2420-1¼ 750 (800-1¼)	2420-2¼ 750 (800-2¼)	NA
CIRCLING	2420-1 750 (800-1)	2420-1¼ 750 (800-1¼)	2420-2¼ 750 (800-2¼)	NA



WAAS CH <b>86301</b> <b>W17A</b>	APP CRS <b>169°</b>	Rwy Idg <b>5898</b> TDZE <b>1665</b> Apt Elev <b>1670</b>
--	------------------------	---

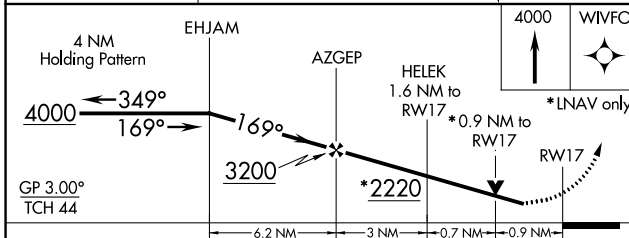
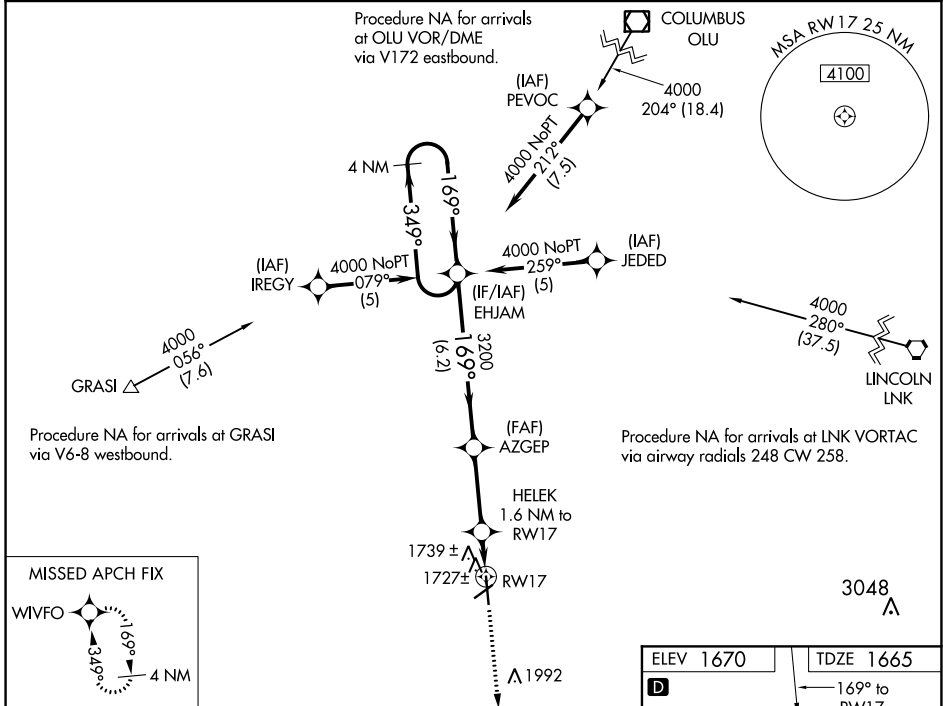
# RNAV (GPS) RWY 17

YORK MUNI (JYR)

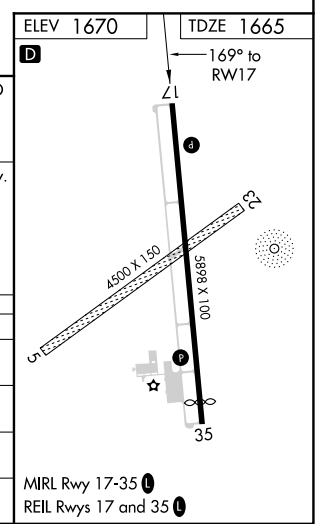
**⚠** For uncompensated Baro-VNAV systems, LNAV/VNAV NA below -18°C (0°F) or above 54°C (130°F). DME/DME RNP-0.3 NA. Visibility reduction by helicopters NA. When local altimeter setting not received, use Aurora altimeter setting and increase all DA/MDA 60 feet and all LPV and LNAV/VNAV visibility ¼ mile. VDP and Baro-VNAV NA when using Aurora altimeter setting.

**MISSED APPROACH:** Climb to 4000 direct WIVFO and hold.

AWOS-3 <b>124.175</b>	MINNEAPOLIS CENTER <b>119.4 278.8</b>	UNICOM <b>122.8 (CTAF) Ⓡ</b>
--------------------------	--	---------------------------------



CATEGORY	A	B	C	D
LPV DA	1915-¾	250 (300-¾)		NA
LNAV/VNAV DA	2031-1¼	366 (400-1¼)		NA
LNAV MDA	2000-1	335 (400-1)		NA
CIRCLING	2060-1 390 (400-1)	2180-1 510 (600-1)	2200-1½ 530 (600-1½)	NA



NC-2, 22 FEB 2024 to 21 MAR 2024

NC-2, 22 FEB 2024 to 21 MAR 2024

WAAS CH <b>49113</b> <b>W35A</b>	APP CRS <b>349°</b>	Rwy ldg <b>5498</b> TDZE <b>1670</b> Apt Elev <b>1670</b>
--	------------------------	---

# RNAV (GPS) RWY 35

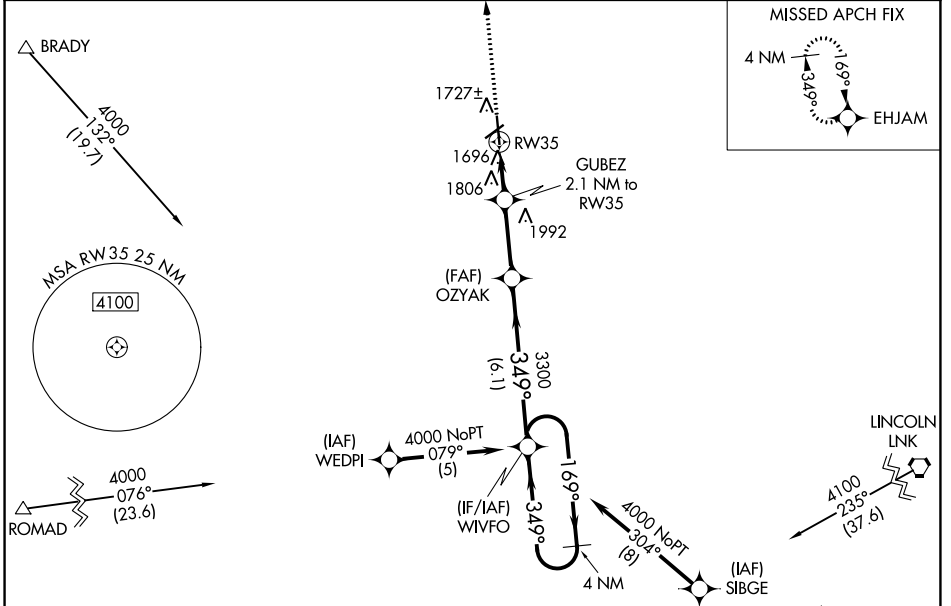
YORK MUNI (JYR)

RNP APCH.

**⚠** For uncompensated Baro-VNAV systems, LNAV/VNAV NA below -18°C or above 54°C.  
**⚠** When local altimeter setting not received, use Aurora altimeter setting and increase all DA/MDA 60 feet and all LPV, all LNAV/VNAV, and Cat C LNAV visibility ¼ mile.  
 VDP and Baro-VNAV NA when using Aurora altimeter setting.

MISSED APPROACH:  
 Climb to 4000 direct  
 EHJAM and hold.

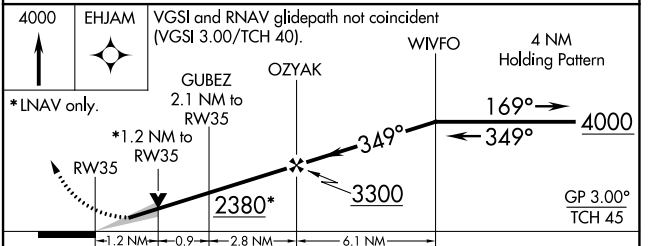
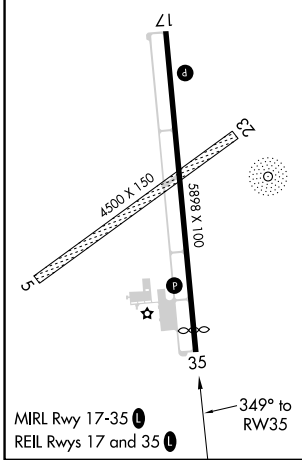
AWOS-3 <b>124.175</b>	MINNEAPOLIS CENTER <b>119.4 278.8</b>	UNICOM <b>122.8 (CTAF)</b> <b>📶</b>
--------------------------	--	--



NC-2, 22 FEB 2024 to 21 MAR 2024

NC-2, 22 FEB 2024 to 21 MAR 2024

ELEV 1670	<b>D</b>	TDZE 1670
-----------	----------	-----------



CATEGORY	A	B	C	D
LPV DA	1920-3/4		250 (300-3/4)	NA
LNAV/VNAV DA	2004-1 1/4		334 (400-1 1/4)	NA
LNAV MDA	2060-1		390 (400-1)	NA
CIRCLING	2060-1 390 (400-1)	2180-1 510 (600-1)	2200-1 1/2 530 (600-1 1/2)	NA