

LOC/DME I-JVW 108.55 Chan 22(Y)	APP CRS 124°	Rwy Idg 5499 TDZE 241 Apt Elev 247
--	------------------------	---

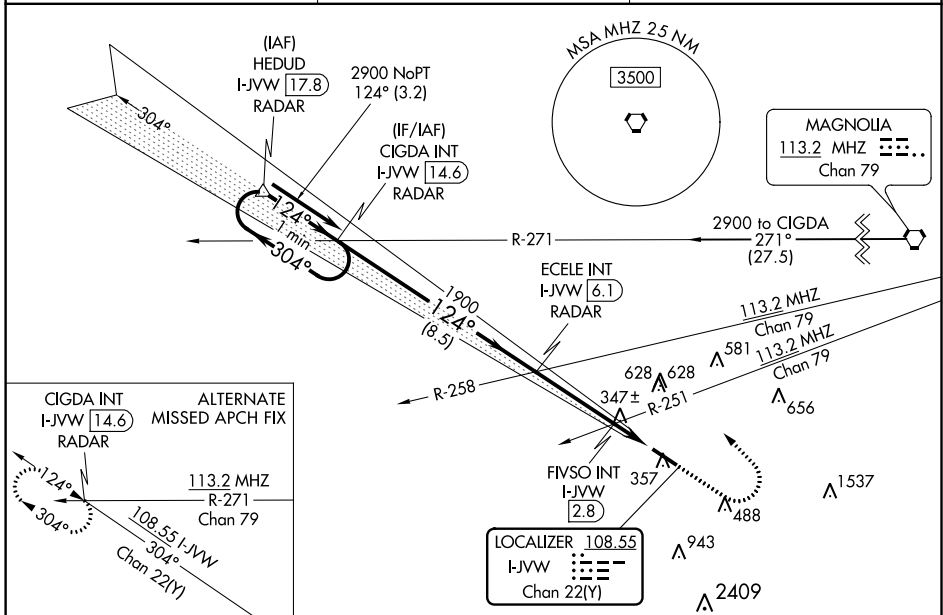
ILS or LOC RWY 12

JOHN BELL WILLIAMS (JVW)

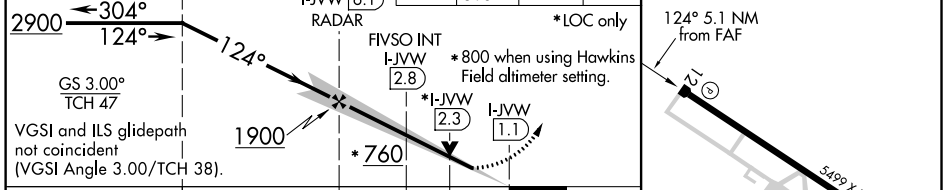
⚠ VDP NA with Hawkins Field altimeter setting. Circling NA for Cat D southwest of Rwy 12-30. When local altimeter setting not received, use Hawkins Field altimeter setting: increase all DA 36 feet, all MDA 40 feet, S-LOC 12 Cat C and D visibilities ¼ mile, and Circling Cat C and D visibilities ¼ mile, increase FIVSO fix minimums S-LOC 12 Cat C and D visibilities ¼ mile and Circling Cat C and D visibilities ¼ mile.

⚠ MISSED APPROACH: Climb to 800 then climbing left turn to 2900 on heading 316° and on MHz VORTAC R-271 to CIGDA INT/I-JVW 14.6 DME and hold.

AWOS-3PT 118.675	JACKSON APP CON ★ 125.25 319.2	UNICOM 123.0 (CTAF)
----------------------------	--	-------------------------------



One Minute Holding Pattern	CIGDA INT I-JVW [14.6] RADAR	ECELE INT I-JVW [6.1] RADAR	800	2900	hdg 316°	MHZ R-271	CIGDA INT	ELEV 247	TDZE 241
----------------------------	------------------------------	-----------------------------	-----	------	----------	-----------	-----------	----------	----------



CATEGORY	A	B	C	D	
S-ILS 12	441- ³ / ₄ 200 (200- ³ / ₄)				
S-LOC 12	760-1	519 (600-1)	760- ¹ / ₈	519 (600- ¹ / ₈)	
C CIRCLING	800-1	553 (600-1)	733 (800-2)	733 (800-2 ¼)	
FIVSO FIX MINIMUMS (DUAL VOR RECEIVERS OR DME REQUIRED)					
S-LOC 12	660-1	419 (500-1)	660- ¹ / ₈	419 (500- ¹ / ₈)	
C CIRCLING	800-1	553 (600-1)	980-2	980-2 ¼	
MIRL Rwy 12-30 ⚠ REIL Rwy 12 and 30 ⚠					
FAF to MAP 5.1 NM					
Knots	60	90	120	150	180
Min:Sec	5:06	3:24	2:33	2:02	1:42

SC-4, 28 JAN 2021 to 25 FEB 2021

SC-4, 28 JAN 2021 to 25 FEB 2021

WAAS CH 50205 W12A	APP CRS 123°	Rwy Idg 5499 TDZE 241 Apt Elev 247
--	------------------------	---

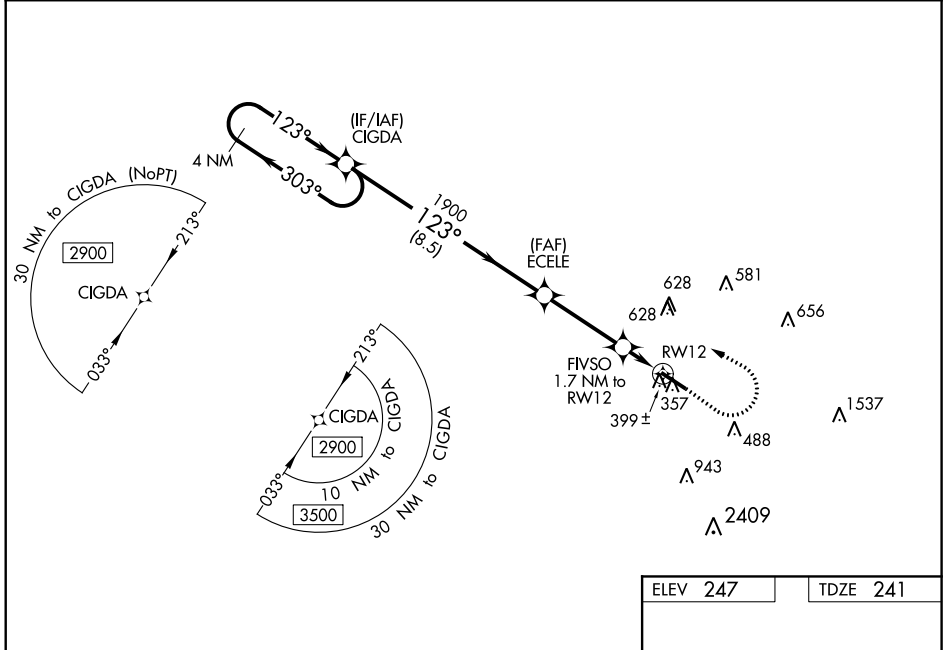
RNAV (GPS) RWY 12

JOHN BELL WILLIAMS (JWV)

⚠ For uncompensated Baro-VNAV systems, LNAV/VNAV NA below -15°C (5°F) or above 54°C (130°F). DME/DME RNP-0.3 NA. Circling NA for Cat D southwest of Rwy 12-30. Baro-VNAV and VDP NA when using Hawkins Field altimeter setting. Helicopter visibility reduction below ¼ SM NA. When local altimeter setting not received, use Hawkins Field altimeter setting: increase all DA 36 feet, all MDA 40 feet, all LNAV/VNAV visibilities ½ mile, LNAV Cat C and D visibilities ¼ mile, and Circling Cat C and D visibility ¼ mile.

MISSED APPROACH: Climb to 800 then climbing left turn to 2900 direct CIGDA and hold.

AWOS-3PT 118.675	JACKSON APP CON* 125.25 319.2	UNICOM 123.0 (CTAF) 0
----------------------------	---	---------------------------------

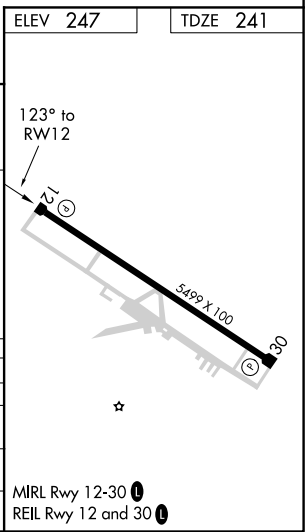


SC-4, 28 JAN 2021 to 25 FEB 2021

SC-4, 28 JAN 2021 to 25 FEB 2021

VGSI and RNAV glidepath not coincident (VGSI Angle 3.00/TCH 38).

4 NM Holding Pattern	CIGDA	ECELE	FIVSO 1.7 NM to RWY 12	RWY 12
2900 ← 303°	123° →	1900	* 1.2 NM to RWY 12	
GP 3.00°		* 820		
TCH 47				
	8.5 NM	3.4 NM	0.5	1.2
CATEGORY	A	B	C	D
LPV DA		441-¾	200 (200-¾)	
LNAV/VNAV DA		662-1⅜	421 (500-1⅜)	
LNAV MDA	660-1	419 (500-1)	660-1⅛	419 (500-1⅛)
C CIRCLING	800-1	553 (600-1)	980-2 733 (800-2)	980-2¼ 733 (800-2¼)



MIRL Rwy 12-30 **0**
REIL Rwy 12 and 30 **0**

WAAS CH 78034 W30A	APP CRS 304°	Rwy Idg 5499 TDZE 247 Apt Elev 247
---------------------------------	------------------------	--

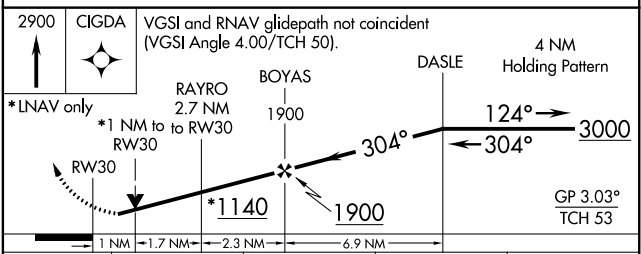
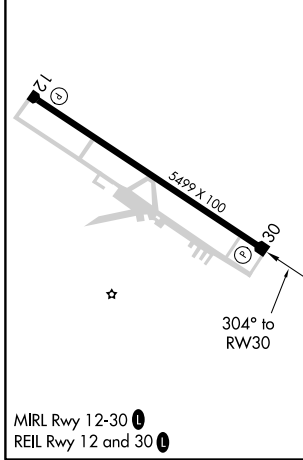
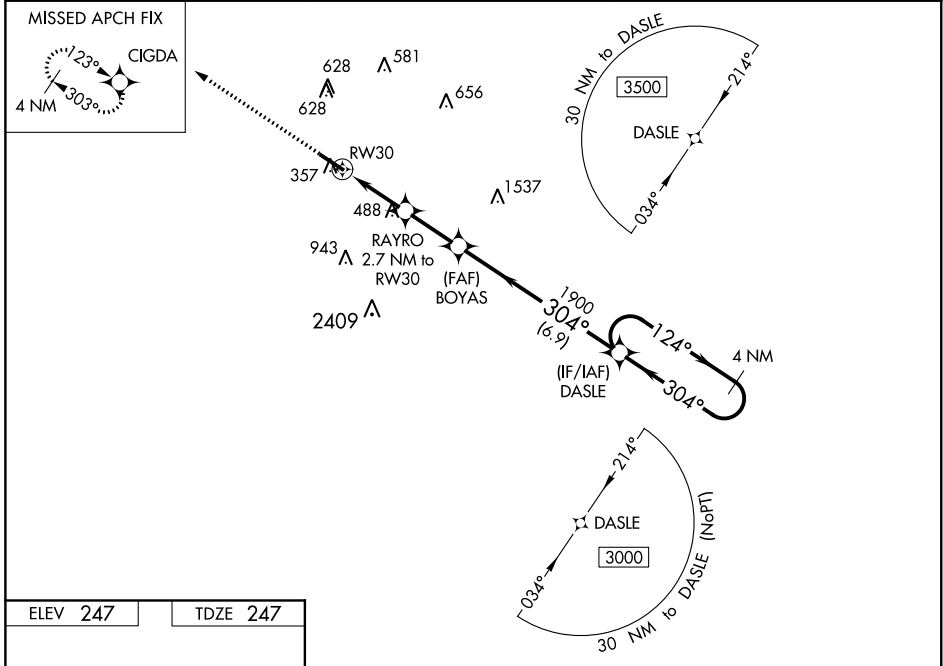
RNAV (GPS) RWY 30

JOHN BELL WILLIAMS (JVW)

⚠ For uncompensated Baro-VNAV systems, LNAV/VNAV NA below -15°C (5°F) or above 54°C (130°F). DME/DME RNP-0.3 NA. Circling NA for Cat D southwest of Rwy 12-30. Helicopter visibility reduction below 3/4 SM NA. When local altimeter setting not received, use Hawkins Field altimeter setting increase all DA/MDA 40 feet, increase LPV and LNAV/VNAV all Cats visibility and LNAV Cat C/D visibility 1/8 mile, increase Circling Cat C visibility 1/4 mile. Baro-VNAV and VDP NA when using Hawkins Field altimeter setting.

MISSED APPROACH:
Climb to 2900 direct
CIGDA and hold.

AWOS-3PT 118,675	JACKSON APP CON* 125,25 319,2	UNICOM 123,0 (CTAF)
----------------------------	---	-------------------------------



CATEGORY	A	B	C	D
LPV DA		513-7/8	266 (300-7/8)	
LNAV/VNAV DA		699-1 1/2	452 (500-1 1/2)	
LNAV MDA	740-1	493 (500-1)	740-1 3/8	493 (500-1 3/8)
C CIRCLING	740-1 493 (500-1)	760-1 513 (600-1)	980-2 733 (800-2)	980-2 1/4 733 (800-2 1/4)

SC-4, 28 JAN 2021 to 25 FEB 2021

SC-4, 28 JAN 2021 to 25 FEB 2021