

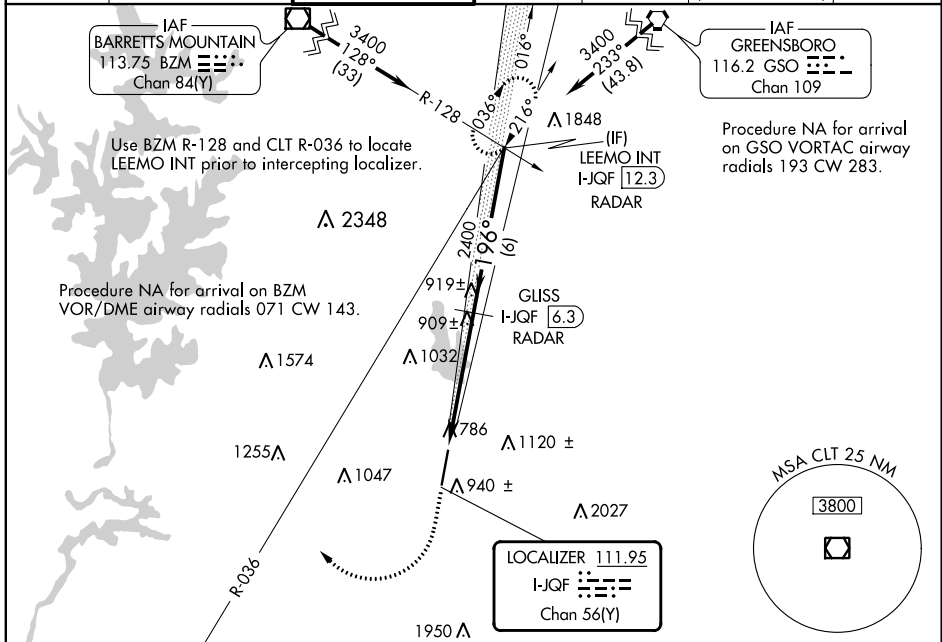
LOC/DME I-JQF <b>111.95</b> Chan <b>56(Y)</b>	APP CRS <b>196°</b>	Rwy Idg <b>6350</b> TDZE <b>705</b> Apt Elev <b>705</b>
---	------------------------	---

# ILS or LOC RWY 20

CONCORD-PADGETT RGNL (JQF)

DME or RADAR required for LOC only.		MALSR	MISSED APPROACH: Climb to 1200 then climbing right turn to 3400 on heading 020° and CLT VOR/DME R-036 to LEEMO INT/I-JQF 12.3 DME/RADAR and hold.
⚠ For inop ALS, increase S-LOC 20 Cat D visibility to 1 3/8 SM. ⚠ NA			

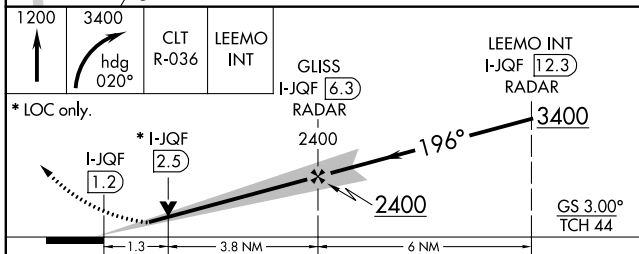
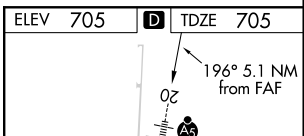
ATIS ★ <b>133.675</b>	CHARLOTTE APP CON <b>128.32 307.8</b>	CONCORD TOWER ★ <b>134.65 (CTAF) 0</b>	GND CON <b>121.85</b>	CLNC DEL <b>118.55</b>	CLNC DEL <b>127.25</b> (when twr closed)	UNICOM <b>122.95</b>
--------------------------	--	---	--------------------------	---------------------------	--	-------------------------



SE-2, 08 SEP 2022 to 06 OCT 2022

SE-2, 08 SEP 2022 to 06 OCT 2022

ELEV 705	TDZE 705
----------	----------



CATEGORY	A	B	C	D
S-ILS 20	905-1/2 200 (200-1/2)			
S-LOC 20	1160-1/2 455 (500-1/2)	1160-7/8 455 (500-7/8)	1160-1 455 (500-1)	
CIRCLING	1300-1 595 (600-1)	1480-2 775 (800-2 1/4)	1480-2 775 (800-2 1/2)	

FAF to MAP 5.1 NM					
Knots	60	90	120	150	180
Min:Sec	5:06	3:24	2:33	2:02	1:42

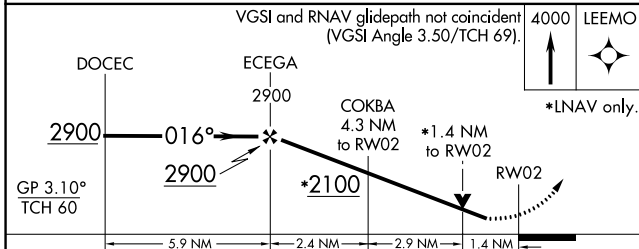
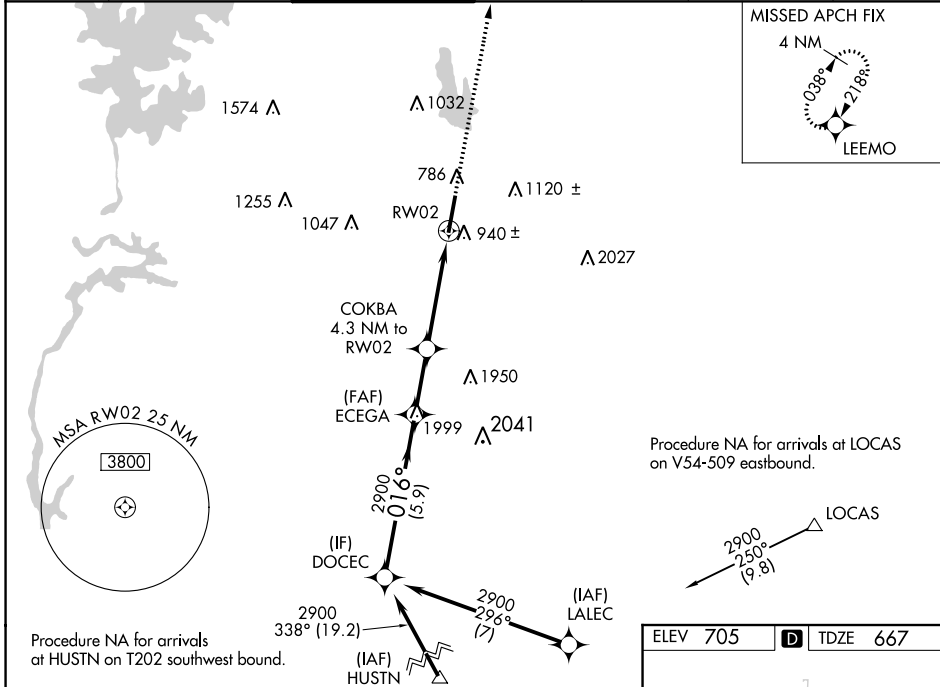
WAAS CH <b>93903</b> <b>W02A</b>	APP CRS <b>016°</b>	Rwy Idg TDZE Apt Elev	<b>7400</b> <b>667</b> <b>705</b>
--	------------------------	-----------------------------	---

# RNAV (GPS) RWY 2

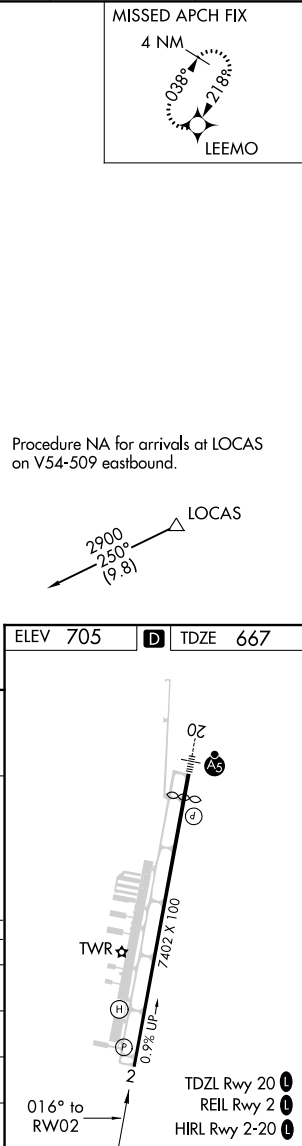
CONCORD-PADGETT RGNL (JQF)

RNP APCH.					MISSED APPROACH: Climb to 4000 direct LEEMO and hold, continue climb-in-hold to 4000.	
▼ Rwy 2 helicopter visibility reduction below 3/4 SM NA. ▲ For uncompensated Baro-VNAV systems, LNAV/VNAV NA below -16°C or above 45°C.						

ATIS* <b>133.675</b>	CHARLOTTE APP CON <b>128.32 307.8</b>	CONCORD TOWER* <b>134.65 (CTAF) 0</b>	GND CON <b>121.85</b>	CLNC DEL <b>118.55</b>	CLNC DEL <b>127.25</b> (when twr closed)	UNICOM <b>122.95</b>
-------------------------	--	--	--------------------------	---------------------------	--	-------------------------



CATEGORY	A	B	C	D
LPV DA		986-1 1/8	319 (300-1 1/8)	
LNAV/VNAV DA		1220-1 1/8	553 (600-1 1/8)	
LNAV MDA	1240-1	573 (600-1)	1240-1 1/8	573 (600-1 1/8)
<b>C</b> CIRCLING	1300-1	595 (600-1)	1480-2 1/4 775 (800-2 1/4)	1480-2 1/2 775 (800-2 1/2)



SE-2, 08 SEP 2022 to 06 OCT 2022

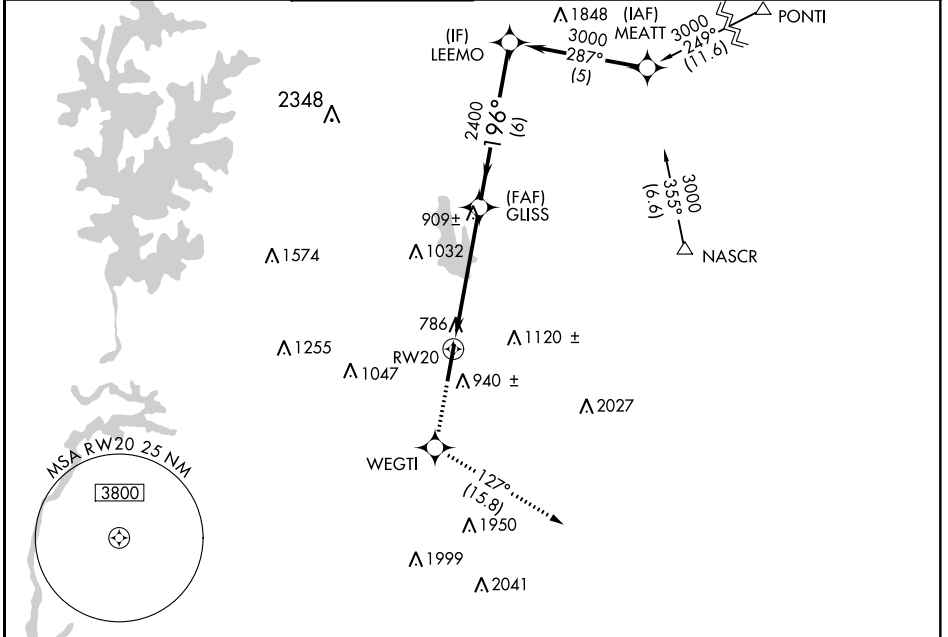
SE-2, 08 SEP 2022 to 06 OCT 2022

WAAS CH <b>56499</b> <b>W20A</b>	APP CRS <b>196°</b>	Rwy Idg TDZE Apt Elev	<b>6350</b> <b>705</b> <b>705</b>
--	------------------------	-----------------------------	---

# RNAV (GPS) RWY 20

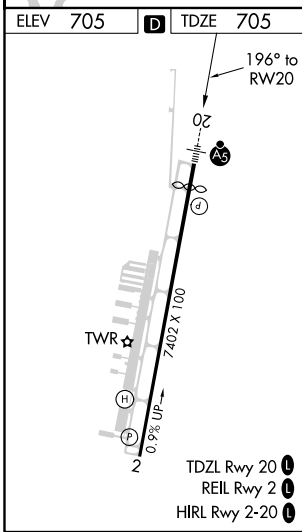
CONCORD-PADGETT RGNL (JQF)

RNP APCH.		MALSR		MISSED APPROACH: Climb to 3000 direct WEGTI and on track 127° to LOCAS and hold.		
<p><b>V</b> For uncompensated Baro-VNAV systems, LNAV/VNAV NA below -16°C or above 54°C. For inop ALS, increase LNAV/VNAV visibility all Cats to 1½ SM.</p>						
ATIS ★	CHARLOTTE APP CON	CONCORD TOWER ★	GND CON	CLNC DEL	CLNC DEL	UNICOM
<b>133.675</b>	<b>128.32 307.8</b>	<b>134.65 (CTAF)</b>	<b>121.85</b>	<b>118.55</b>	<b>127.25</b> (when twr closed)	<b>122.95</b>



SE-2, 08 SEP 2022 to 06 OCT 2022

SE-2, 08 SEP 2022 to 06 OCT 2022



ELEV 705	D	TDZE 705	LOCAS 093° 4 NM 273°			
3000	WEGTI	LOCAS	LEEMO			
↑	✦	△	3000			
*LNAV only.			GLISS			
RWY 20			*1.8 NM to RWY 20		2400	
1.8 NM			3.3 NM		6 NM	
196°			2400			
GP 3.00°			TCH 44			
CATEGORY	A	B	C	D		
LPV DA	955-½		250 (300-½)			
LNAV/VNAV DA	1222-1¼		517 (600-1¼)			
LNAV MDA	1300-½		1300-1¼		595 (600-1¼)	
CIRCLING	1300-1		1480-2¼		775 (800-2¼)	
			1480-2½		775 (800-2½)	