

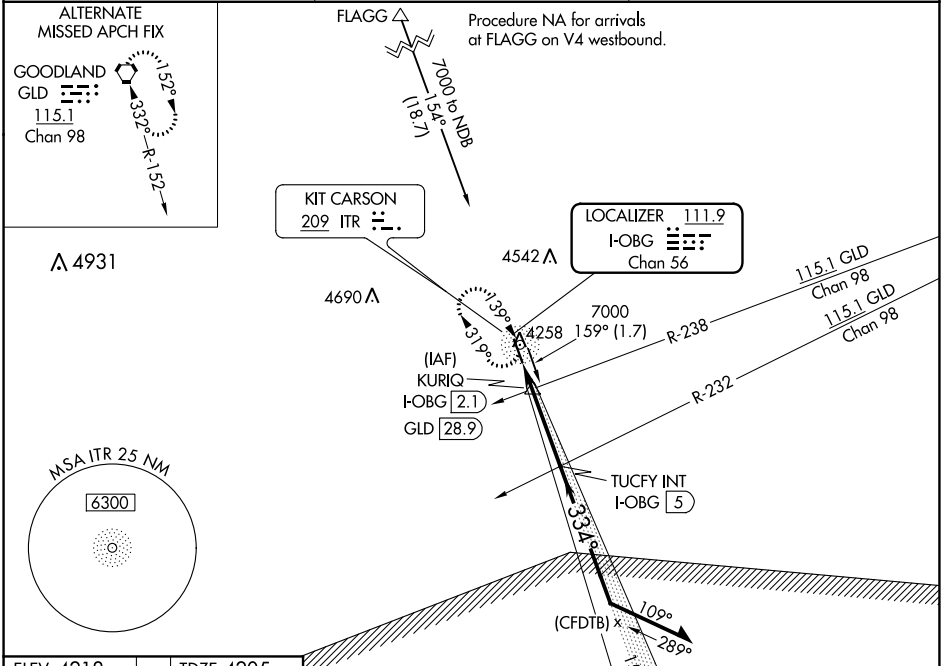
LOC/DME I-OBG <b>111.9</b> Chan 56	APP CRS <b>334°</b>	Rwy Idg TDZE Apt Elev	<b>5199</b> <b>4205</b> <b>4218</b>
--	------------------------	-----------------------------	---

# LOC RWY 33

KIT CARSON COUNTY (ITR)

<b>NA</b> ADF required.	MISSED APPROACH: Climb to 7000 direct ITR NDB and hold, continue climb-in-hold to 7000.
-------------------------	---

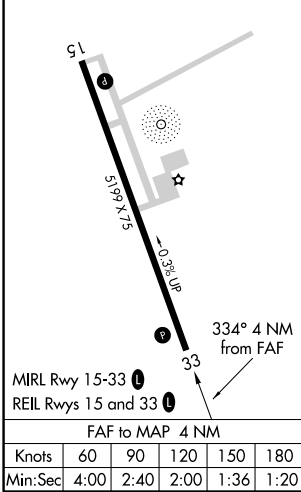
ASOS <b>135.225</b>	DENVER CENTER <b>132.7 226.675</b>	UNICOM <b>122.8 (CTAF) 0</b>
------------------------	---------------------------------------	---------------------------------



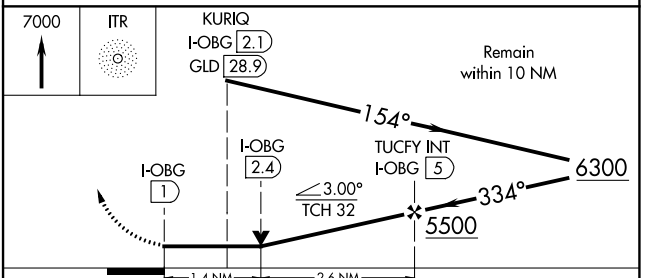
SW-1, 12 AUG 2021 to 09 SEP 2021

SW-1, 12 AUG 2021 to 09 SEP 2021

ELEV 4218	TDZE 4205
-----------	-----------



## ADF or DME REQUIRED



CATEGORY	A	B	C	D
S-33	4680-1 475 (500-1)		4680-1 <sup>3</sup> / <sub>8</sub> 475 (500-1 <sup>3</sup> / <sub>8</sub> )	
<input checked="" type="checkbox"/> CIRCLING	4680-1 462 (500-1)		4860-1 <sup>3</sup> / <sub>4</sub> 642 (700-1 <sup>3</sup> / <sub>4</sub> )	4860-2 642 (700-2)

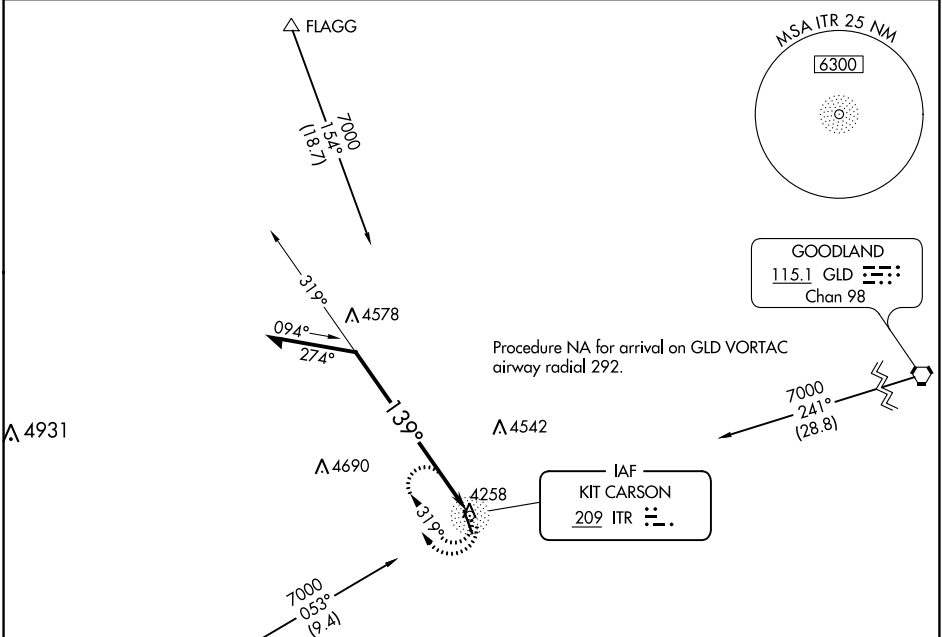
NDB ITR <b>209</b>	APP CRS <b>139°</b>	Rwy Idg TDZE Apt Elev	<b>5199</b> <b>4218</b> <b>4218</b>
-----------------------	------------------------	-----------------------------	---

# NDB RWY 15

KIT CARSON COUNTY (ITR)

MISSED APPROACH: Climbing right turn to 7000 in ITR NDB holding pattern, continue climb-in-hold to 7000.

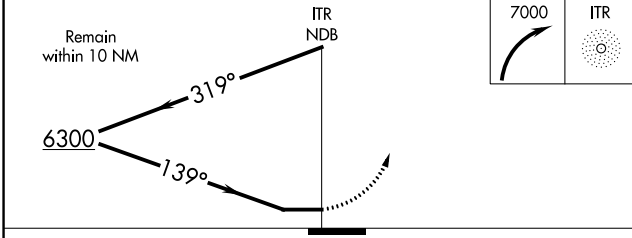
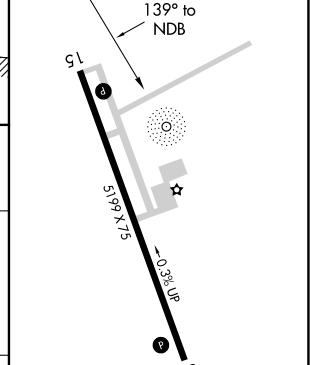
ASOS <b>135.225</b>	DENVER CENTER <b>132.7 226.675</b>	UNICOM <b>122.8 (CTAF) 1</b>
------------------------	---------------------------------------	---------------------------------



SW-1, 12 AUG 2021 to 09 SEP 2021

SW-1, 12 AUG 2021 to 09 SEP 2021

ELEV 4218	TDZE 4218
-----------	-----------



CATEGORY	A	B	C	D
S-15	4940-1	722 (800-1)	4940-2	722 (800-2)
<b>C</b> CIRCLING	4940-1	722 (800-1)	4940-2 722 (800-2)	4940-2 1/4 722 (800-2 1/4)

MIRL Rwy 15-33 1  
REIL Rwy 15 and 33 1

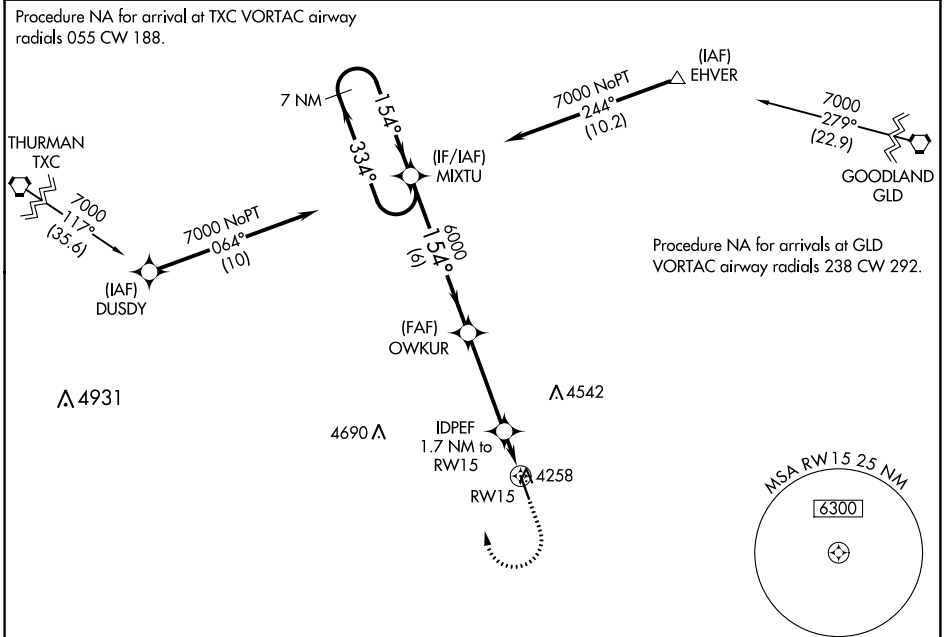
WAAS CH <b>72999</b> <b>W15A</b>	APP CRS <b>154°</b>	Rwy Idg <b>5199</b> TDZE <b>4218</b> Apt Elev <b>4218</b>
--	------------------------	---

# RNAV (GPS) RWY 15

KIT CARSON COUNTY (ITR)

**▽** For uncompensated Baro-VNAV systems, LNAV/VNAV NA below -22°C (-7°F) or above 53°C (127°F). DME/DME RNP- 0.3 NA. MISSED APPROACH: Climb to 4700 then climbing right turn to 7000 direct MIXTU and hold.

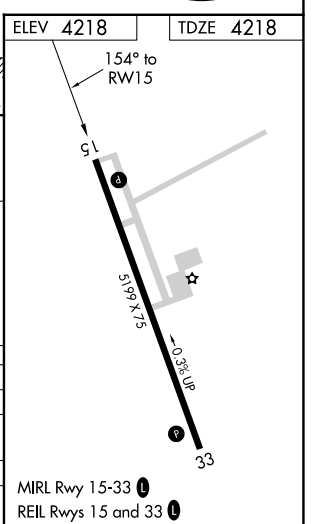
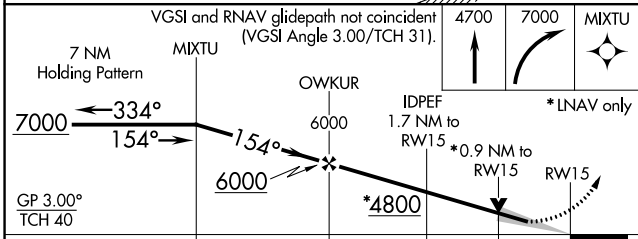
ASOS <b>135.225</b>	DENVER CENTER <b>132.7 226.675</b>	UNICOM <b>122.8 (CTAF) 0</b>
------------------------	---------------------------------------	---------------------------------



SW-1, 12 AUG 2021 to 09 SEP 2021

SW-1, 12 AUG 2021 to 09 SEP 2021

ELEV 4218	TDZE 4218
-----------	-----------



CATEGORY	A	B	C	D
LPV DA		4468-1	250 (300-1)	
LNAV/VNAV DA		4468-1	250 (300-1)	
LNAV MDA		4520-1	302 (400-1)	
<b>C</b> CIRCLING	4580-1 362 (400-1)	4680-1 462 (500-1)	4860-1¾ 642 (700-1¾)	4860-2 642 (700-2)

MIRA Rwy 15-33 **0**  
REIL Rwy 15 and 33 **0**