

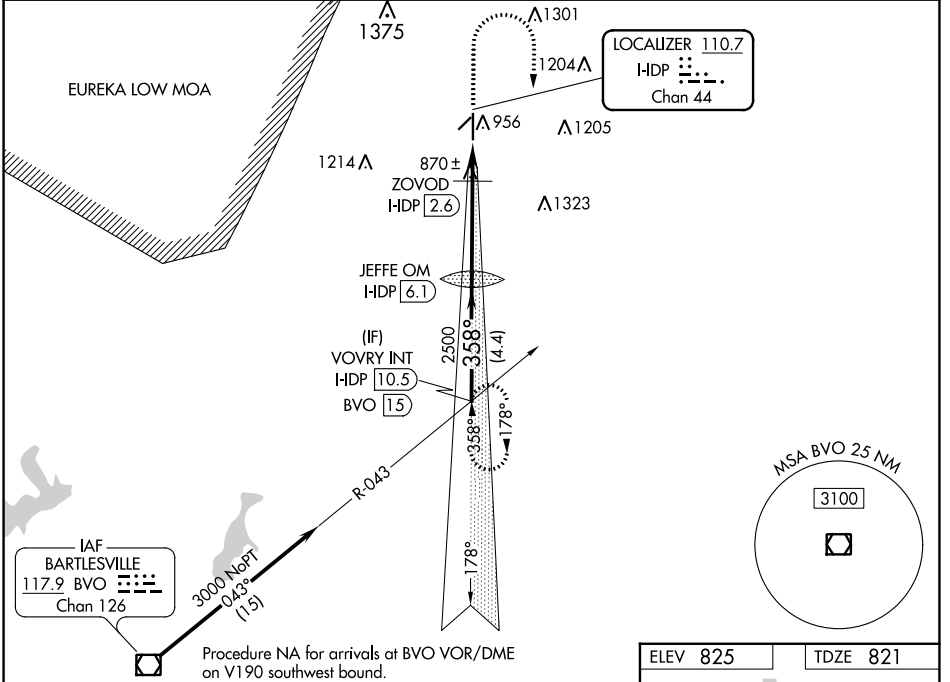
LOC/DME I-DP 110.7 Chan 44	APP CRS 358°	Rwy Idg 5501 TDZE 821 Apt Elev 825
--	------------------------	---

ILS or LOC RWY 35

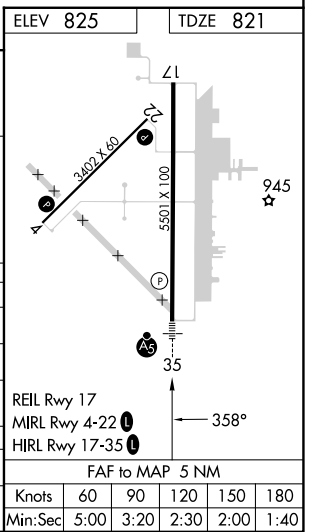
INDEPENDENCE MUNI (IDP)

NA Circling Rwy 4, 22 NA at night.	MALS R AS	MISSED APPROACH: Climb to 1500 then climbing right turn to 3000 on heading 179° to intercept BVO VOR/DME R-043 to VOVRY INT and hold.
---	------------------	---

AWOS-3PT 118.525	KANSAS CITY CENTER 128.6 282.325	CLNC DEL 121.65	UNICOM 123.05 (CTAF) 0
----------------------------	--	---------------------------	---



VOVRY INT I-DP 10.5 BVO 15	JEFFE OM I-DP 6.1	ZOVOD I-DP 2.6	BVO R-043	VOVRY INT
3000	2461	1340	1340	1340
GS 3.00° TCH 42	358°	2500	178°	178°
4.4 NM	3.5 NM	0.7 NM	0.8 NM	
CATEGORY	A	B	C	D
S-ILS 35	1021-1/2		200 (200-1/2)	
S-LOC 35	1340-1/2 519 (600-1/2)		1340-1 519 (600-1)	
C CIRCLING	1340-1 515 (600-1)		1340-1 1/2 515 (600-1 1/2) 1680-2 3/4 855 (900-2 3/4)	
ZOVOD FIX MINIMUMS				
S-LOC 35	1120-1/2 299 (300-1/2)			
C CIRCLING	1280-1 455 (500-1)		1340-1 1/2 515 (600-1 1/2) 1680-2 3/4 855 (900-2 3/4)	



NC-2, 22 FEB 2024 to 21 MAR 2024

NC-2, 22 FEB 2024 to 21 MAR 2024

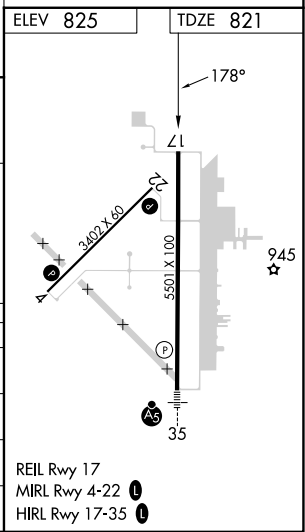
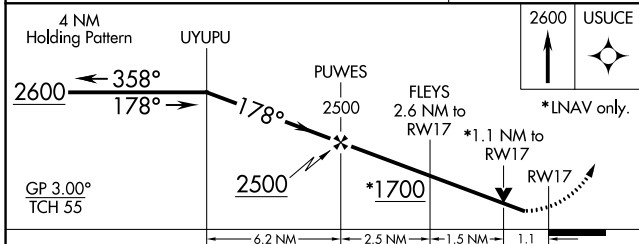
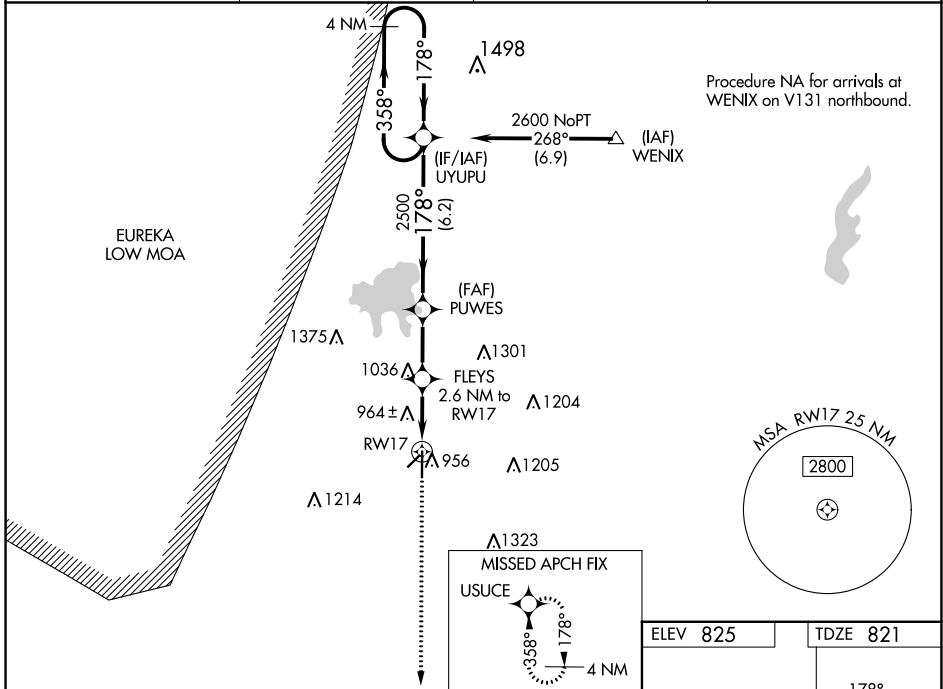
WAAS CH 50338 W17A	APP CRS 178°	Rwy Idg TDZE Apt Elev	5501 821 825
--	------------------------	-----------------------------	---

RNAV (GPS) RWY 17

INDEPENDENCE MUNI (IDP)

RNP APCH.	<p>▼ For uncompensated Baro-VNAV systems, LNAV/VNAV NA below -1.6°C (4°F) or above 54°C (130°F). Circling Rwy 4, 22 NA at night. Rwy 17 helicopter visibility reduction below 3/4 SM NA.</p> <p>▲ MISSED APPROACH: Climb to 2600 direct USUCE and hold.</p>
-----------	---

AWOS-3PT 118.525	KANSAS CITY CENTER 128.6 282.325	CLNC DEL 121.65	UNICOM 123.05 (CTAF) 0
----------------------------	--	---------------------------	----------------------------------



CATEGORY	A	B	C	D
LPV DA		1021-3/4	200 (200-3/4)	
LNAV/VNAV DA		1076-3/4	255 (300-3/4)	
LNAV MDA	1220-1	399 (400-1)	1220-1 1/8	399 (400-1 1/8)
CIRCLING	1280-1	455 (500-1)	1340-1 1/2	1680-2 3/4
			515 (600-1 1/2)	855 (900-2 3/4)

NC-2, 22 FEB 2024 to 21 MAR 2024

NC-2, 22 FEB 2024 to 21 MAR 2024

WAAS CH 53310 W35A	APP CRS 358°	Rwy Idg TDZE Apt Elev	5501 821 825
--	------------------------	-----------------------------	---

RNAV (GPS) RWY 35

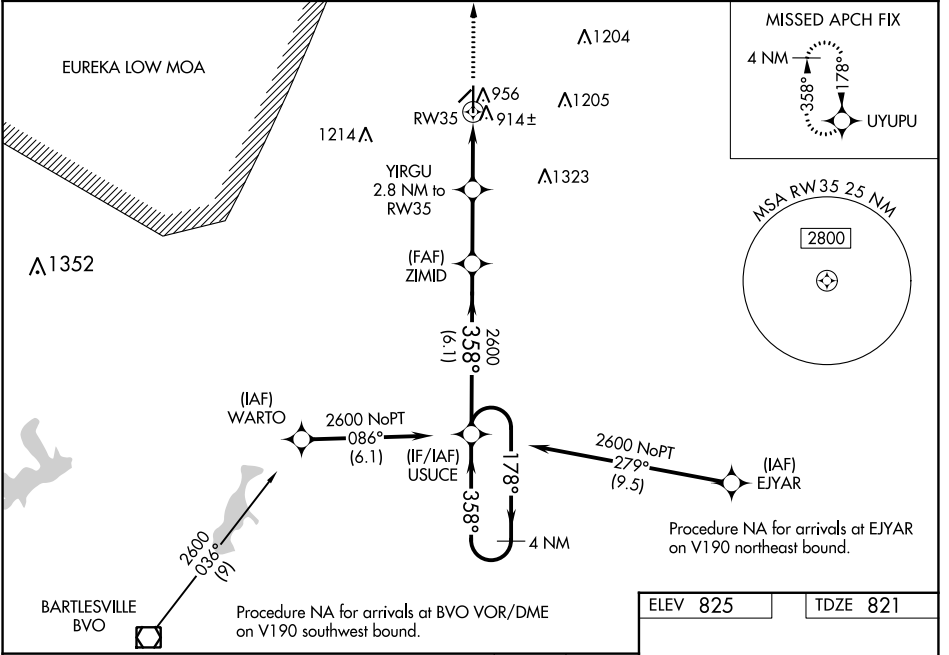
INDEPENDENCE MUNI (IDP)

⚠ For uncompensated Baro-VNAV systems, LNAV/VNAV NA below -16°C (4°F) or above 54°C (130°F). Circling Rwy 4, 22 NA at night. DME/DME RNP-0.3 NA. For inop ALS, increase LNAV/VNAV DA all Cats visibilities to 7/5 SM and LNAV MDA Cats C and D visibilities to 1 SM.

MALSR

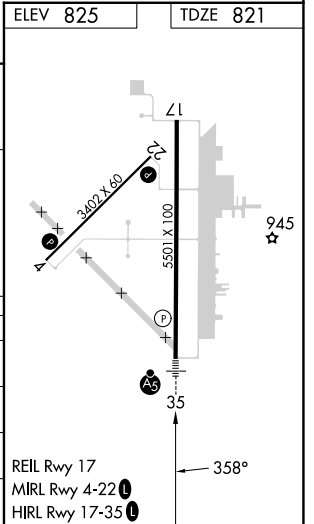
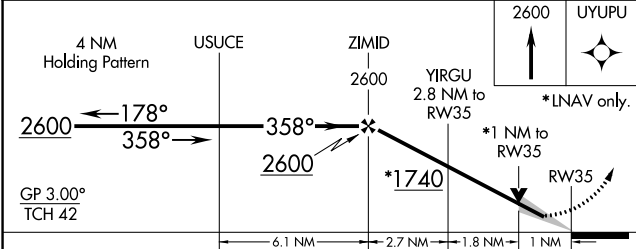
MISSED APPROACH: Climb to 2600 direct UYUPU and hold.

AWOS-3PT 118.525	KANSAS CITY CENTER 128.6 282.325	CLNC DEL 121.65	UNICOM 123.05 (CTAF)
----------------------------	--	---------------------------	--------------------------------



NC-2, 22 FEB 2024 to 21 MAR 2024

NC-2, 22 FEB 2024 to 21 MAR 2024



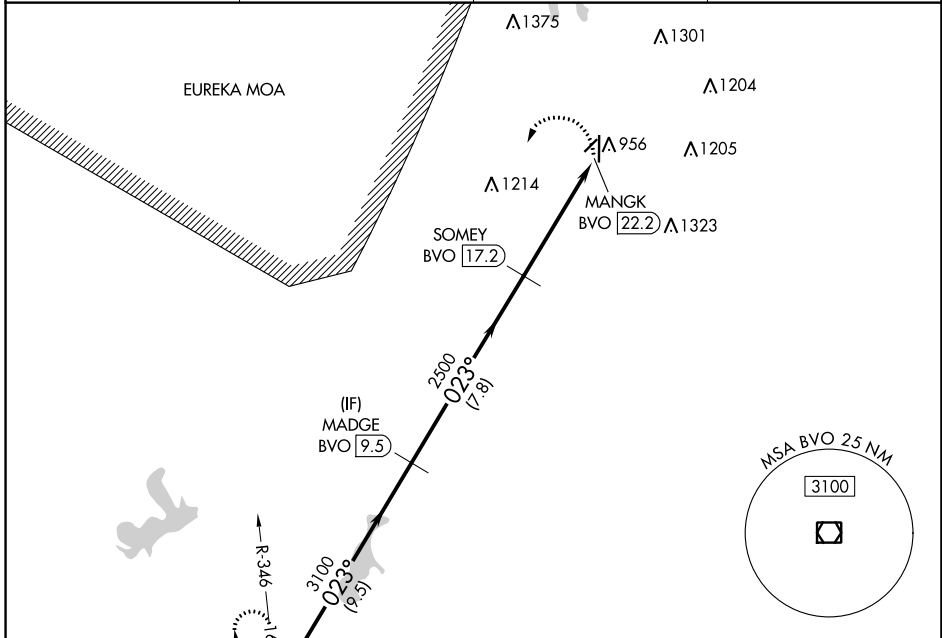
CATEGORY	A	B	C	D
LPV DA	1021-1/2		200 (200-1/2)	
LNAV/VNAV DA	1097-1/2		276 (300-1/2)	
LNAV MDA	1180-1/2 359 (400-1/2)		1180-5/8 359 (400-5/8)	
CIRCLING	1280-1 455 (500-1)		1340-1 1/2 515 (600-1/2) 1680-2 3/4 855 (900-2 3/4)	

VOR/DME BVO 117.9 Chan 126	APP CRS 023°	Rwy Idg TDZE Apt Elev N/A N/A 825
--	------------------------	---

VOR-A
INDEPENDENCE MUNI (IDP)

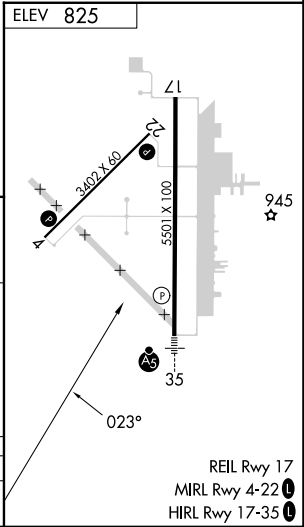
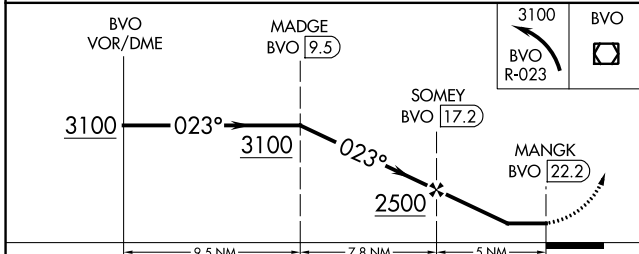
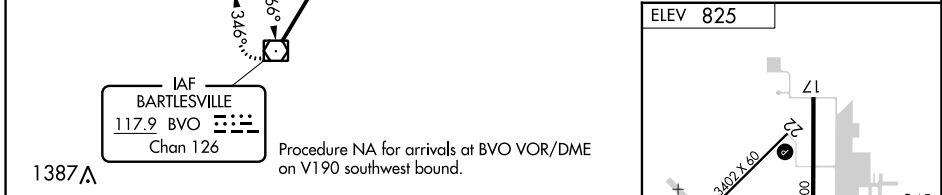
DME required.		MISSED APPROACH: Climbing left turn to 3100 on BVO VOR/DME R-023 to BVO VOR/DME and hold.	
Circling Rwy 4, 22 NA at night.			

AWOS-3PT 118,525	KANSAS CITY CENTER 128.6 282,325	CLNC DEL 121.65	UNICOM 123,05 (CTAF)
----------------------------	--	---------------------------	--------------------------------



NC-2, 22 FEB 2024 to 21 MAR 2024

NC-2, 22 FEB 2024 to 21 MAR 2024



CATEGORY	A	B	C	D
CIRCLING	1420-1	595 (600-1)	1420-1½ 595 (600-1½)	1680-2¾ 855 (900-2¾)

REIL Rwy 17
MIRL Rwy 4-22
HIRL Rwy 17-35