

AL-494 [USAF]

HOMESTEAD ARB (KHST)

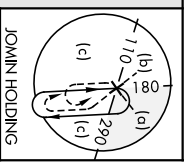
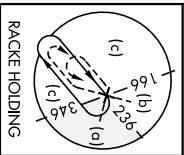
TACAN HST Chan 19	APCH CRS 056°	Rwy Idg 11 201	TDZE 5	Api Elev 6
----------------------	------------------	-------------------	-----------	---------------

ALSF-1
A1

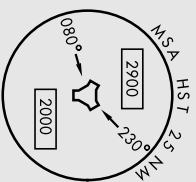
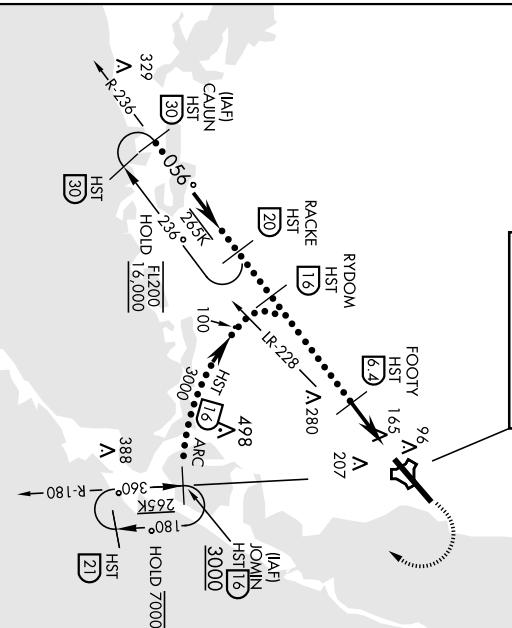
MISSED APPROACH: Climb to 800 then climbing right turn to 3000 intercept HST TACAN R-180 to JOVIN HST hold.

ATIS * 132.215 269.9	APP CON 123.8 257.675	TOWER 133.45 279.55	GND CON 121.75 275.8	CINC DEL 121.75 275.8
-------------------------	--------------------------	------------------------	-------------------------	--------------------------

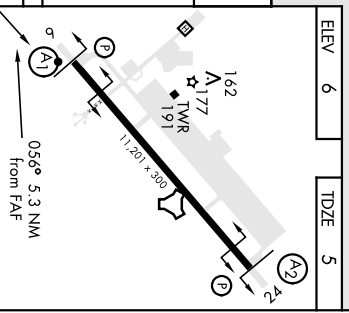
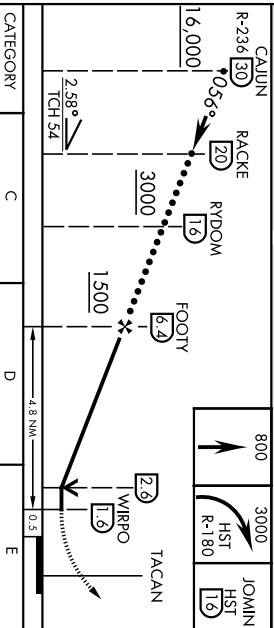
CAUTION: Heliport and stadium 2.2 NM
final Rwy 6 at Homestead ARB
(stadium may be lit after dark).
Missed approach requires use of RNAV
or ATC RADAR monitoring.



HOMESTEAD
Chan 19 HST



EMERG SAFE ALT 100 NM, 15,100



CATEGORY	C	D	E
S-6 *	460/45	455 (500-7/8)	
CIRCLING **	520-1 1/2 51.4 (600-1 1/2)	580-2 57.4 (800-2)	780-2 1/4 77.4 (800-2 1/4)

HOMESTEAD, FLORIDA	25°29'N-80°23'W
HIRL Rwy 6-24	
HOMESTEAD ARB (KHST)	

Andrt 1 21APR22

HI-TACAN Y RWY 6

HOMESTEAD, FLORIDA

RNAV (GPS) RWY 24

APCH CRS	Rwy Idg	11,201
235°	TDZE	5
	Arprt Elev	6

AL-494 (USAF)

HOMESTEAD ARB (KHST)

⚠ * When ALS inop increase CAT AB RVR to 55, vis to 1 mile;
 CAT CDE RVR to 60, vis to 1 1/8 miles.
 ** Circling NA NW of Rwy 06-24.



MISSED APPROACH: Climb to 800 then climbing left turn to 3000 direct JOMIN and hold.

ATIS★ 132.275 269.9	APP CON/DEP CON 123.8 257.675	TOWER 133.45 279.55	GND CON 121.75 275.8	CLNC DEL 121.75 275.8
-------------------------------	---	-------------------------------	--------------------------------	---------------------------------

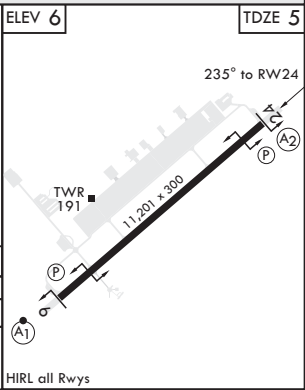
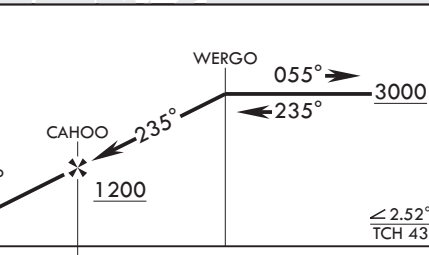
RNP APCH

DME/DME RNP -0.3 NA

CAUTION: Heliport and Stadium 2.2 NM from departure end Rwy 24 at Homestead ARB (Stadium may be lit after dark).



EMERG SAFE ALT 100 NM 15,100



CATEGORY	A	B	C	D	E
LNVA MDA*	460/40 455 (500-¾)	460/55 455 (500-1)	520-1½ 514 (600-1½)	580-2 574 (600-2)	780-2¾ 774 (800-2¾)
C CIRCLING**	460-1 454 (500-1)	500-1 494 (500-1)	520-1½ 514 (600-1½)	580-2 574 (600-2)	780-2¾ 774 (800-2¾)

HOMESTEAD, FLORIDA

25°29'N - 80°23'W

HOMESTEAD ARB (KHST)

Amdt 3 30DEC21
TERPS

RNAV (GPS) RWY 24

SE-3, 22 FEB 2024 to 21 MAR 2024

SE-3, 22 FEB 2024 to 21 MAR 2024

HOMESTEAD, FLORIDA

RNAV (GPS) RWY 6

APCH CRS	Rwy Idg	11,201
055°	TDZE	5
	Arprt Elev	6

AL-494 (USAF)

HOMESTEAD ARB (KHST)

<p>⚠ * When ALS inop increase CAT AB RVR to 55, vis to 1 mile, CAT CDE vis to 1 3/8 miles. ** Circling NA NW of Rwy 6-24.</p>	<p>ALSF-1</p>	<p>MISSED APPROACH: Climb to 800 then climbing right turn to 3000 direct JOMIN and hold.</p>

<p>ATIS *</p> <p>132.275 269.9</p>	<p>APP CON/DEP CON</p> <p>123.8 257.675</p>	<p>TOWER</p> <p>133.45 279.55</p>	<p>GND CON</p> <p>121.75 275.8</p>	<p>CLNC DEL</p> <p>121.75 275.8</p>
------------------------------------	---	-----------------------------------	------------------------------------	-------------------------------------

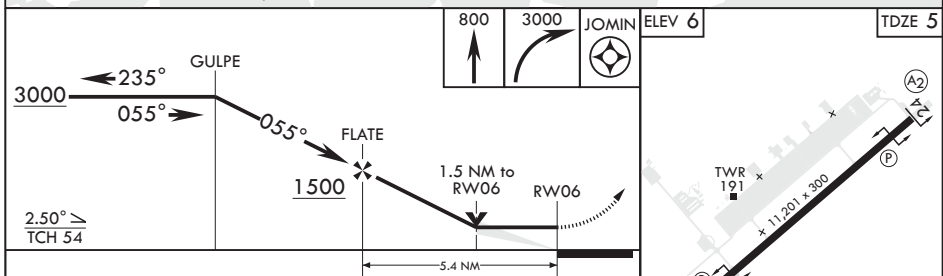
DME/DME RNP -0.3 NA

RNP APCH

CAUTION: Heliport and Stadium 2.2 NM final Rwy 6 at Homestead ARB (stadium may be lit after dark).



EMERG SAFE ALT 100 NM 15,100



CATEGORY	A	B	C	D	E
LNAV MDA*	460/24	455 (500-1/2)	460/45	455	(500-3/8)
CIRCLING**	460-1 454 (500-1)	500-1 494 (500-1)	520-1 1/2 514 (600-1 1/2)	580-2 574 (600-2)	780-2 3/4 774 (800-2 3/4)

HOMESTEAD, FLORIDA

25°29'N - 80°23'W

HOMESTEAD ARB (KHST)

Amdt 1 13AUG20

RNAV (GPS) RWY 6

SE-3, 22 FEB 2024 to 21 MAR 2024

SE-3, 22 FEB 2024 to 21 MAR 2024

AL-494 [USAF]

HOMESTEAD ARB (KHST)

TACAN HST Chan 19	APCH CRS 056°	Rwy Idg 11.201
	TDZE Elev 6	



MISSED APPROACH: Climb to 800 then climbing right turn to 3000 Intercept HST TACAN R-180 to JOMIN and hold.

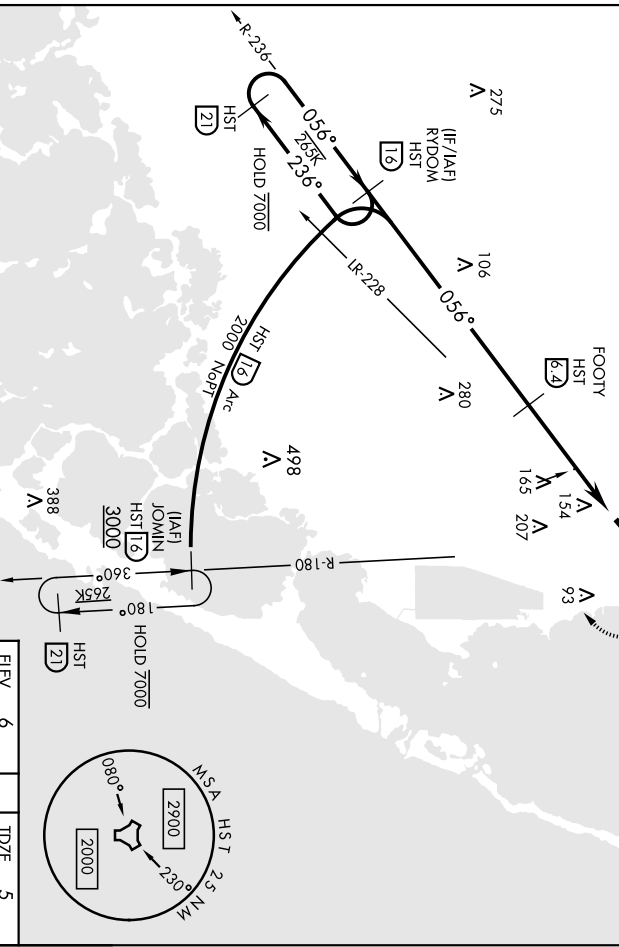
ATIS *	APP CON	TOWER
132.275 269.9	123.8 257.675	133.45 279.55

GND CON	CINCL DEL
121.75 275.8	121.75 275.8

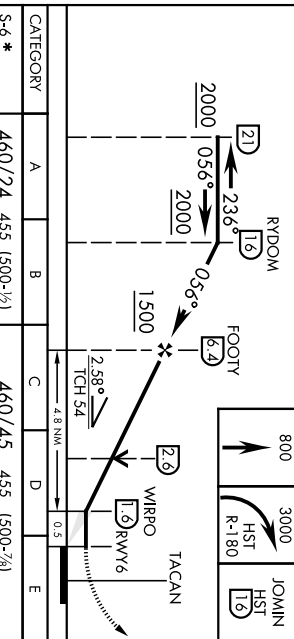
CAUTION: Heliport and stadium 2.2 NM final Rwy 6 of Homestead ARB (stadium may be lit after dark).

HOMESTEAD
Chan 19 HST

Missed approach requires use of RNAV or ATC RADAR monitoring.



EMERG SAFE ALT 100 NM 15,100



CATEGORY	A	B	C	D	E
S-6 *	460/24	455 (500-½)	460/45	455 (500-¾)	
** CIRCLING	460-1 454 (500-1)	500-1 494 (500-1)	520-1½ 514 (600-1½)	580-2 574 (600-2)	780-2¾ 774 (800-2¾)

