

CONRA THREE DEPARTURE
(CONRA3, CONRA) 30NOV23

CLNC DEL
225.4
GND CON
133.85 225.4
HOOD TOWER ★
119.65 269.45
GRAY DEP CON
120.075 323.15

**TOP ALTITUDE:
3500**

RADAR required.



DEPARTURE ROUTE DESCRIPTION

TAKEOFF RUNWAYS 16, 34: Climb on assigned heading for RADAR vectors to CONRA INT, maintain 3500. Thence. . . .

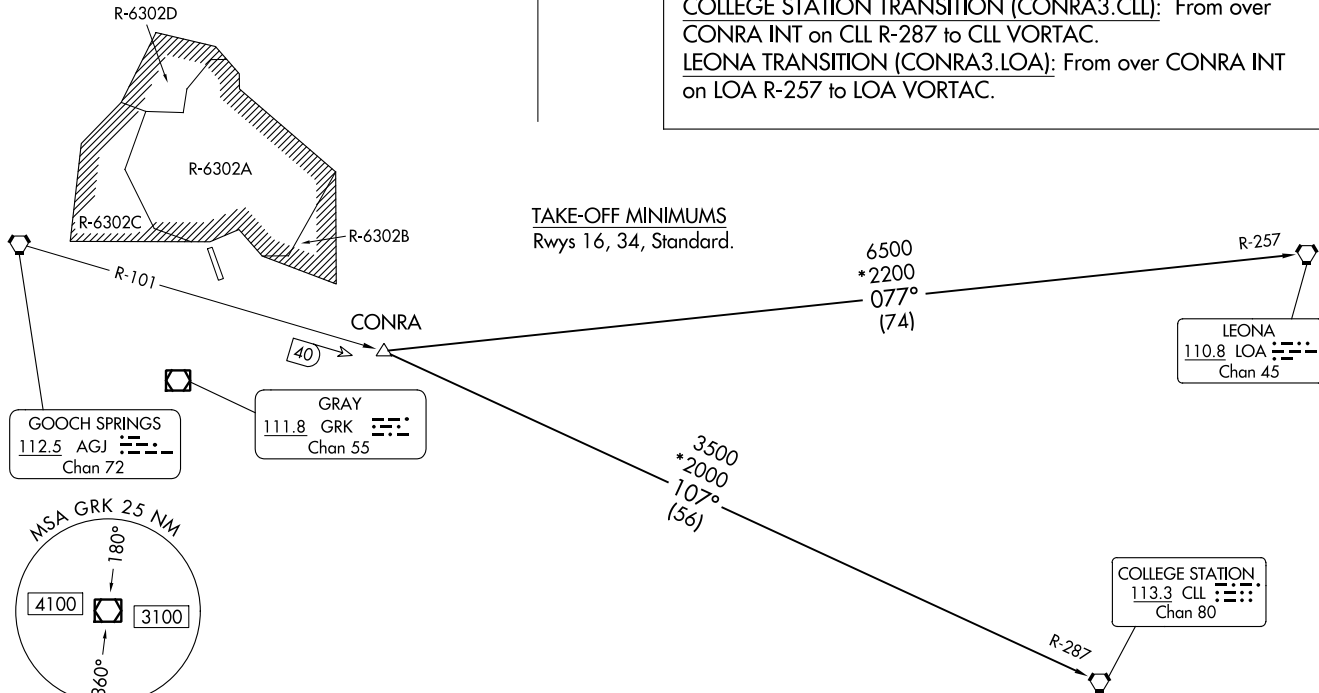
. . . .(transition), expect filed altitude 10 minutes after departure.

COLLEGE STATION TRANSITION (CONRA3.CLL): From over CONRA INT on CLL R-287 to CLL VORTAC.

LEONA TRANSITION (CONRA3.LOA): From over CONRA INT on LOA R-257 to LOA VORTAC.



TAKE-OFF MINIMUMS
Rwys 16, 34, Standard.



NOTE: Chart not to scale.

(CONRA3, CONRA) 23334
CONRA THREE DEPARTURE

AL-5031 (FAA)

YOAKUM-DERENN AHP (HLLR)
FORT CAVAZOS (KILLEN), TEXAS

FORT CAVAZOS (KILLEN), TEXAS
YOAKUM-DERENN AHP (HLLR)

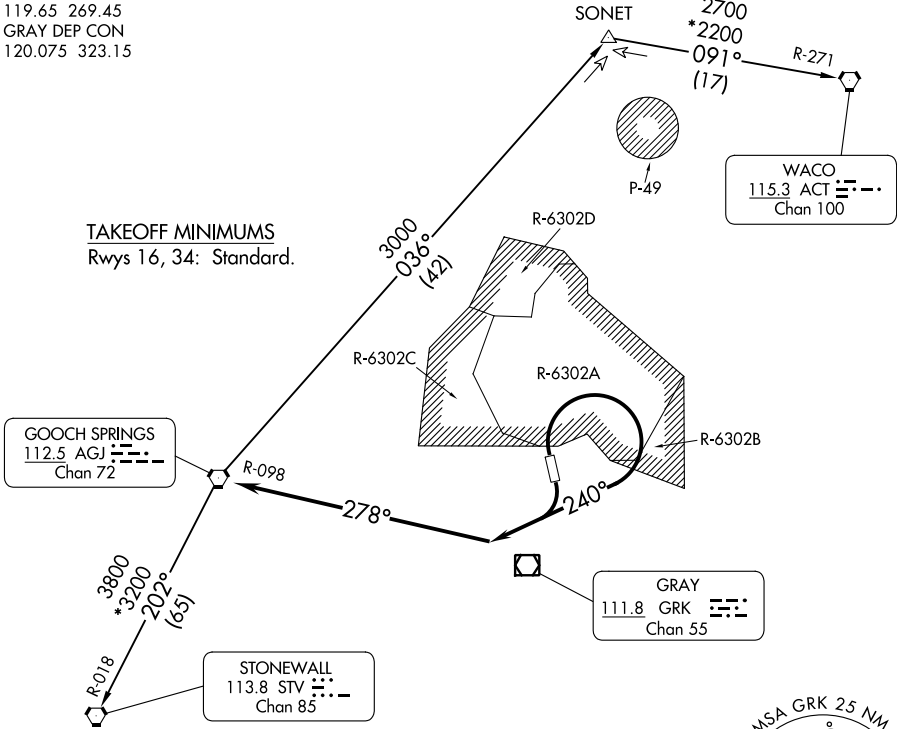
LAMPS EIGHT DEPARTURE

CLNC DEL
225.4
GND CON
133.85 225.4
HOOD TOWER★
119.65 269.45
GRAY DEP CON
120.075 323.15

RADAR required.

**TOP ALTITUDE:
ASSIGNED BY ATC**

TAKEOFF MINIMUMS
Rwys 16, 34: Standard.



NOTE: WACO TRANSITION for aircraft inbound to terminal area airports.

NOTE: Chart not to scale.

DEPARTURE ROUTE DESCRIPTION

TAKEOFF RUNWAYS 16, 34: Climbing right turn heading 240° (to assigned altitude) to intercept and proceed on AGJ R-098. Thence . . .

. . . on (transition) or (assigned route). Maintain ATC assigned altitude.

STONEWALL TRANSITION (LAMPS8.STV): From over AGJ VORTAC on AGJ R-202 and STV R-018 to STV VORTAC.

WACO TRANSITION (LAMPS8.ACT): From over AGJ VORTAC on AGJ R-036 to SONET INT, then on ACT R-271 to ACT VORTAC.