

APP CRS <b>274°</b>	Rwy ldg TDZE Apt Elev	<b>3999</b> <b>823</b> <b>824</b>
------------------------	-----------------------------	---

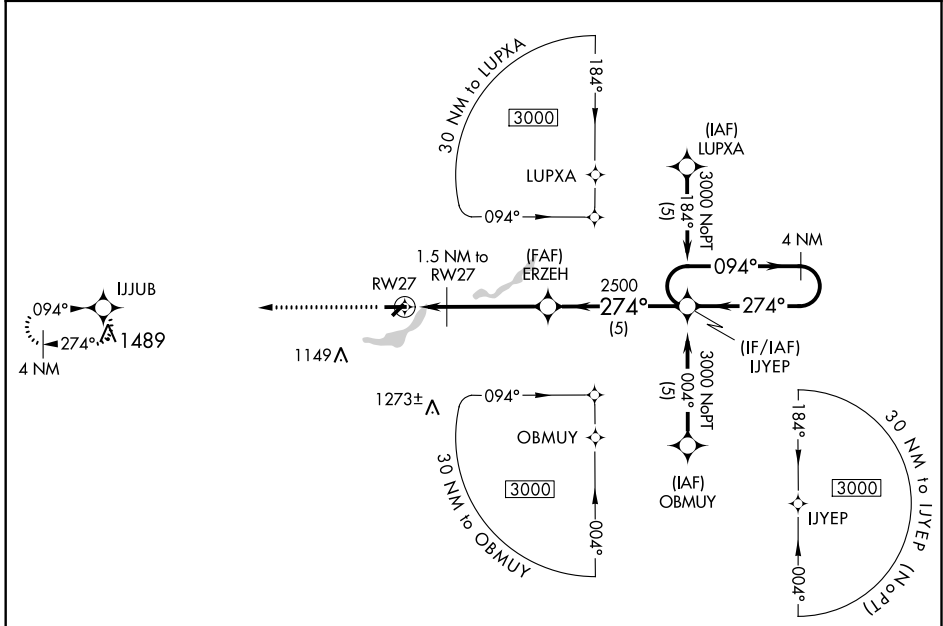
# RNAV (GPS) RWY 27

THREE RIVERS MUNI DR HAINES (HAI)

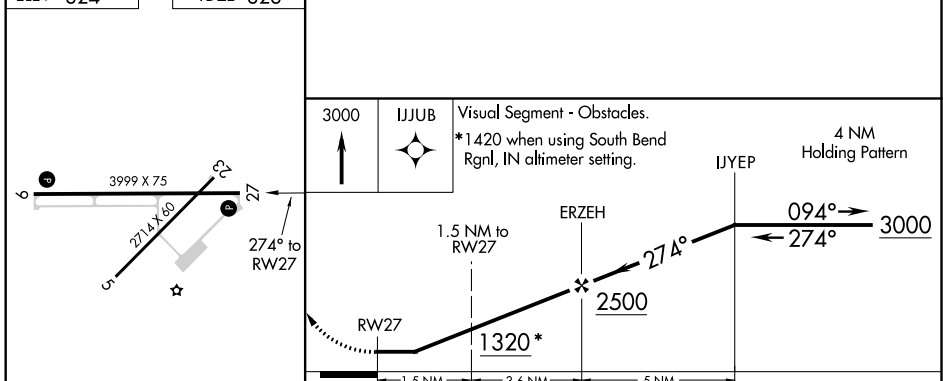
**⚠** DME/DME RNP-0.3 NA. When local altimeter setting not received, use South Bend altimeter setting and increase all MDA 100 feet; increase LNAV Cat C visibility 1/8 mile and increase Circling Cat C visibility 1/2 mile. Procedure NA at night. Helicopter visibility reduction below 1 SM NA.

**MISSED APPROACH:** Climb to 3000 direct IJJUB WP and hold.

AWOS-3 <b>119.975</b>	GREAT LAKES APP CON ★ <b>121.2 239.25</b>	UNICOM <b>122.8 (CTAF) 0</b>
--------------------------	--	---------------------------------



ELEV <b>824</b>	TDZE <b>823</b>
-----------------	-----------------



CATEGORY	A	B	C	D
LNAV MDA	1200-1	377 (400-1)	1200-1 1/4 377 (400-1 1/4)	NA
<b>C</b> CIRCLING	1320-1 496 (500-1)	1420-1 596 (600-1)	1560-2 736 (800-2)	NA

EC-1, 11 AUG 2022 to 08 SEP 2022

EC-1, 11 AUG 2022 to 08 SEP 2022

VOR/DME AZO <b>109.0</b> Chan <b>27</b>	APP CRS <b>187°</b>	Rwy Idg TDZE Apt Elev	<b>N/A</b> <b>N/A</b> <b>824</b>
---	------------------------	-----------------------------	--

# VOR-A

THREE RIVERS MUNI DR HAINES (HAI)

**⚠** When local altimeter setting not received, use South Bend altimeter setting and increase all MDA 100 feet, and increase Cat C visibility 1/2 mile. Procedure NA at night. Helicopter visibility reduction below 1 SM NA.

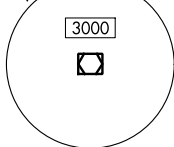
**⚠** MISSED APPROACH: Climbing left turn to 2600 on heading 318° and AZO VOR/DME R-187 to RILLE INT/12 DME and hold.

AWOS-3  
**119.975**

GREAT LAKES APP CON ★  
**121.2 239.25**

UNICOM  
**122.8 (CTAF) ①**

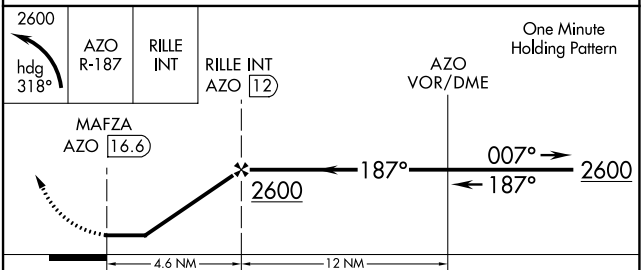
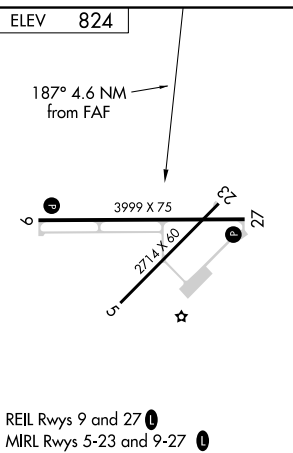
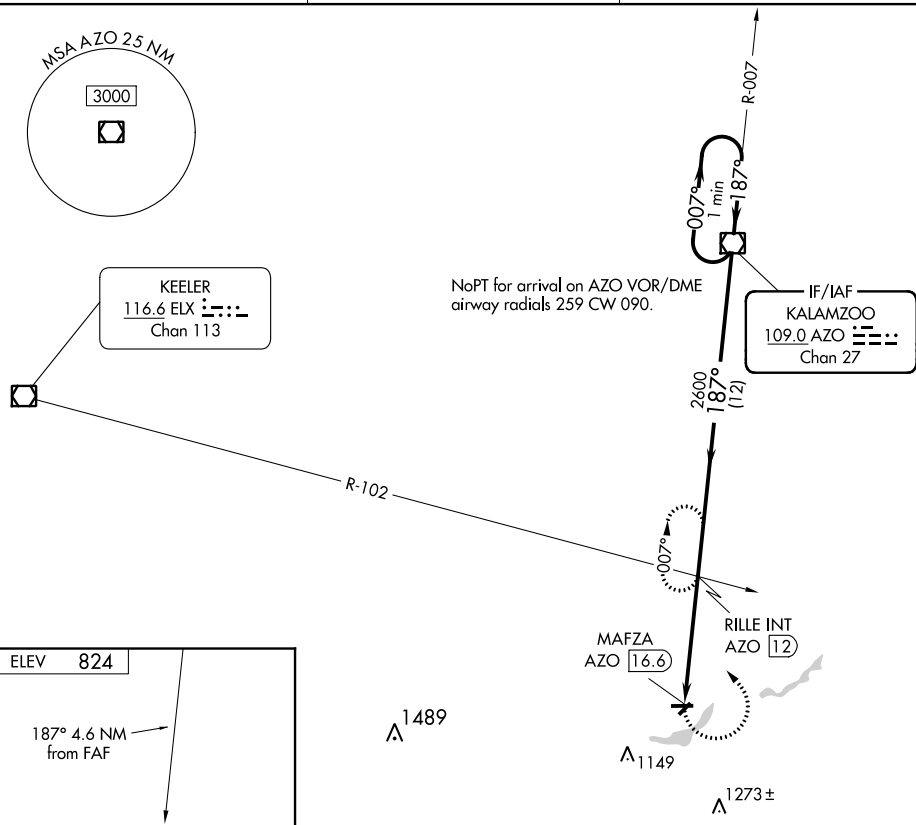
MSA AZO 25 NM



KEELER  
116.6 ELX Chan 113

NoPT for arrival on AZO VOR/DME  
airway radials 259 CW 090.

IF/IAF  
KALAMZOO  
109.0 AZO Chan 27



FAF to MAP 4.6 NM					
Knots	60	90	120	150	180
Min:Sec	4:36	3:04	2:18	1:50	1:32

CATEGORY	A	B	C	D
<b>C</b> CIRCLING	1320-1 496 (500-1)	1420-1 596 (600-1)	1560-2 736 (800-2)	NA

EC-1, 11 AUG 2022 to 08 SEP 2022

EC-1, 11 AUG 2022 to 08 SEP 2022