

APP CRS 168°	Rwy Idg 4000
	TDZE 484
	Apt Elev 484

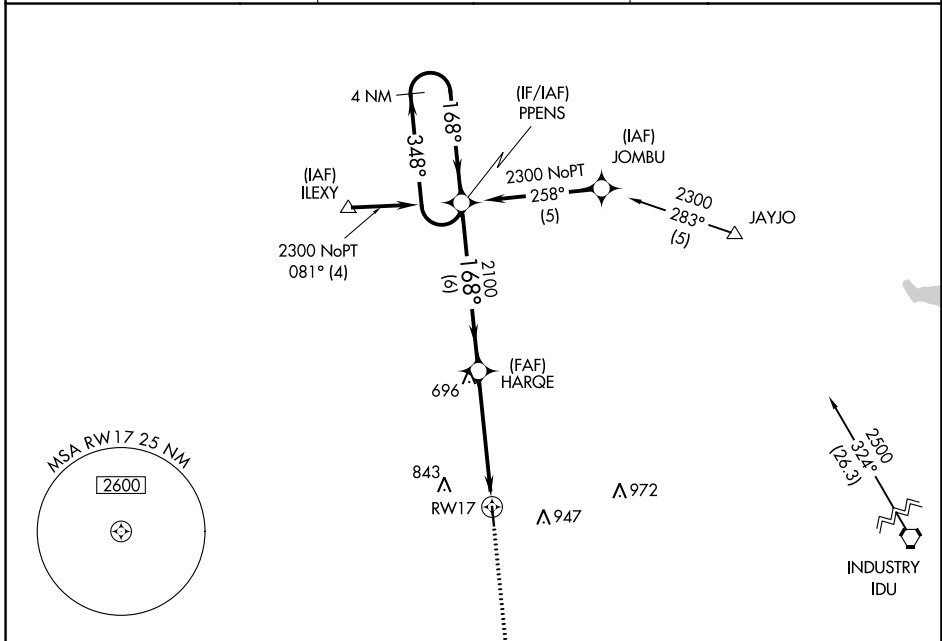
RNAV (GPS) RWY 17

GIDDINGS-LEE COUNTY (GYB)

⚠ DME/DME RNP-0.3 NA. Helicopter visibility reduction below 1 SM NA.
⚠ Procedure NA at night. When local altimeter setting not received, use Austin-Bergstrom Intl altimeter setting and increase all MDA 100 feet; increase visibility Cat C ½ SM.

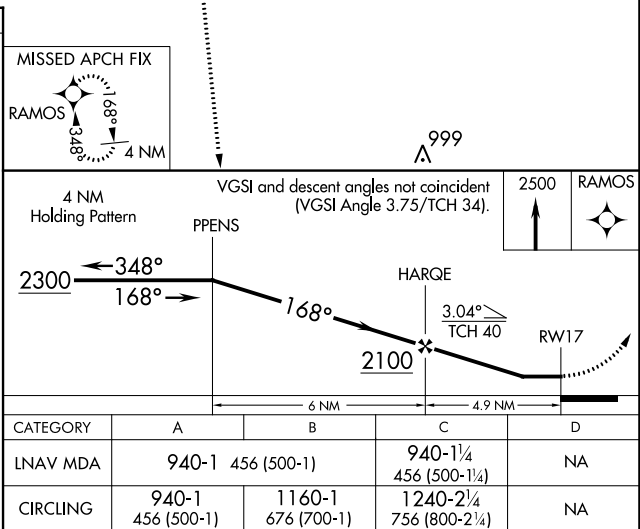
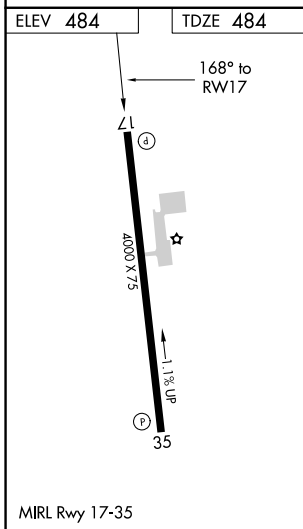
MISSED APPROACH:
 Climb to 2500 direct RAMOS and hold.

AWOS-3 119.225	AUSTIN APP CON 127.225 317.65	UNICOM 123.05 (CTAF)
---------------------------------	--	---------------------------------------



SC-5, 22 FEB 2024 to 21 MAR 2024

SC-5, 22 FEB 2024 to 21 MAR 2024



APP CRS 348°	Rwy Idg 4000
	TDZE 473
	Apt Elev 484

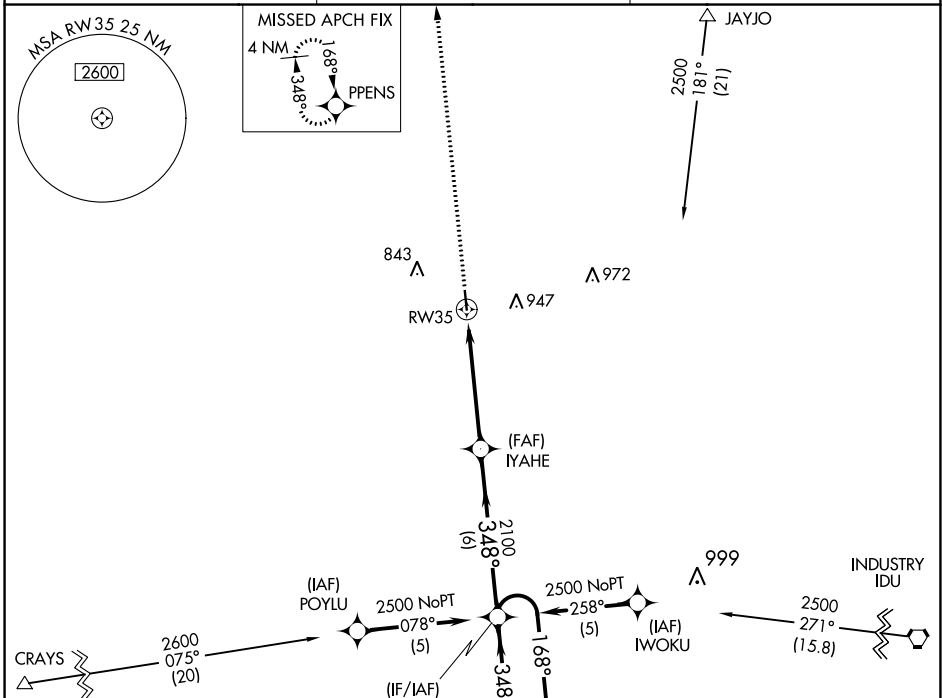
RNAV (GPS) RWY 35

GIDDINGS-LEE COUNTY (GYB)

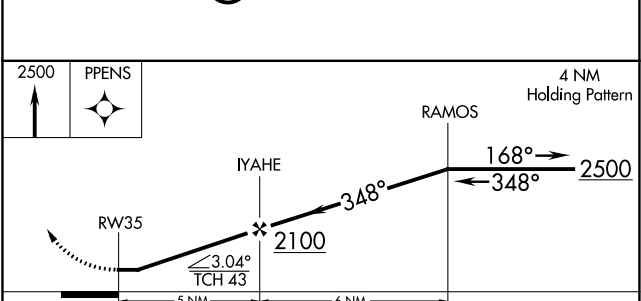
⚠ DME/DME RNP-0.3 NA. Procedure NA at night. Helicopter visibility reduction below 1 SM NA. When local altimeter setting not received, use Austin-Bergstrom Intl altimeter setting and increase all MDA 100 feet; increase visibility Cat C ¼ SM.

⚠ MISSED APPROACH: Climb to 2500 direct PPENS and hold.

AWOS-3 119.225	AUSTIN APP CON 127.225 317.65	UNICOM 123.05 (CTAF)
--------------------------	---	--------------------------------



ELEV 484	TDZE 473
-----------------	-----------------



CATEGORY	A	B	C	D
LNAV MDA	960-1	487 (500-1)	960-1¼ 487 (500-1¼)	NA
CIRCLING	960-1 476 (500-1)	1160-1 676 (700-1)	1240-2¼ 756 (800-2¼)	NA

SC-5, 22 FEB 2024 to 21 MAR 2024

SC-5, 22 FEB 2024 to 21 MAR 2024

VORTAC IDU 110.2 Chan 39	APP CRS 293°	Rwy Idg TDZE Apt Elev N/A N/A 484
--	------------------------	---

VOR/DME-A
GIDDINGS-LEE COUNTY (GYB)

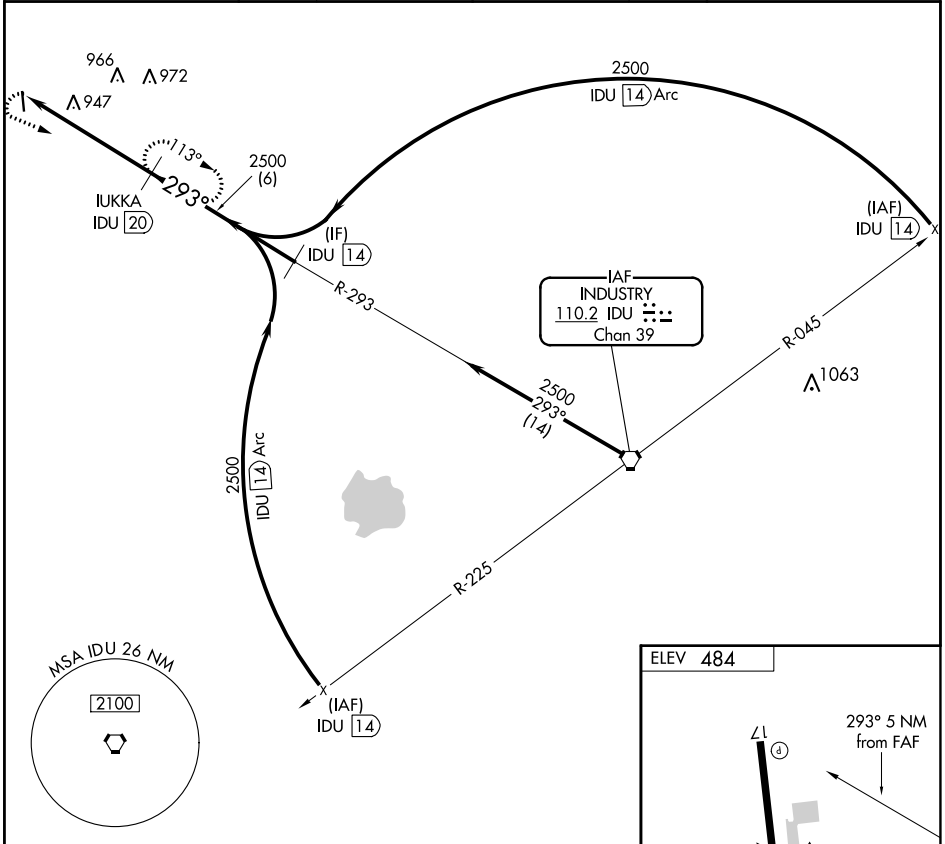
NA Procedure NA at night. Helicopter visibility reduction below 1 SM NA. Use Austin-Bergstrom altimeter setting.

MISSED APPROACH: Climbing left turn to 2500 via IDU R-293 to IUKKA 20 DME and hold.

AWOS-3
119.225

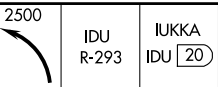
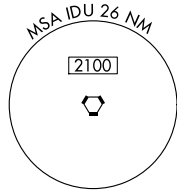
AUSTIN APP CON
127.225 317.65

UNICOM
123.05 (CTAF)

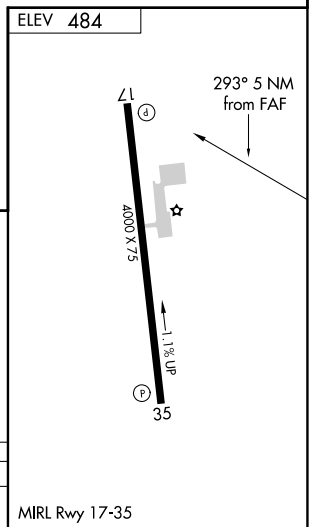
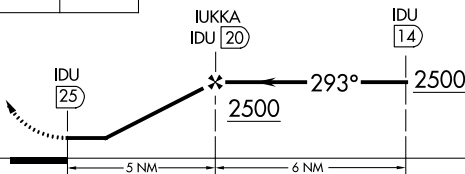


SC-5, 22 FEB 2024 to 21 MAR 2024

SC-5, 22 FEB 2024 to 21 MAR 2024



Procedure Turn NA



CATEGORY	A	B	C	D
CIRCLING	1300-1¼	816 (900-1¼)	1300-2½ 816 (900-2½)	NA

MIRL Rwy 17-35