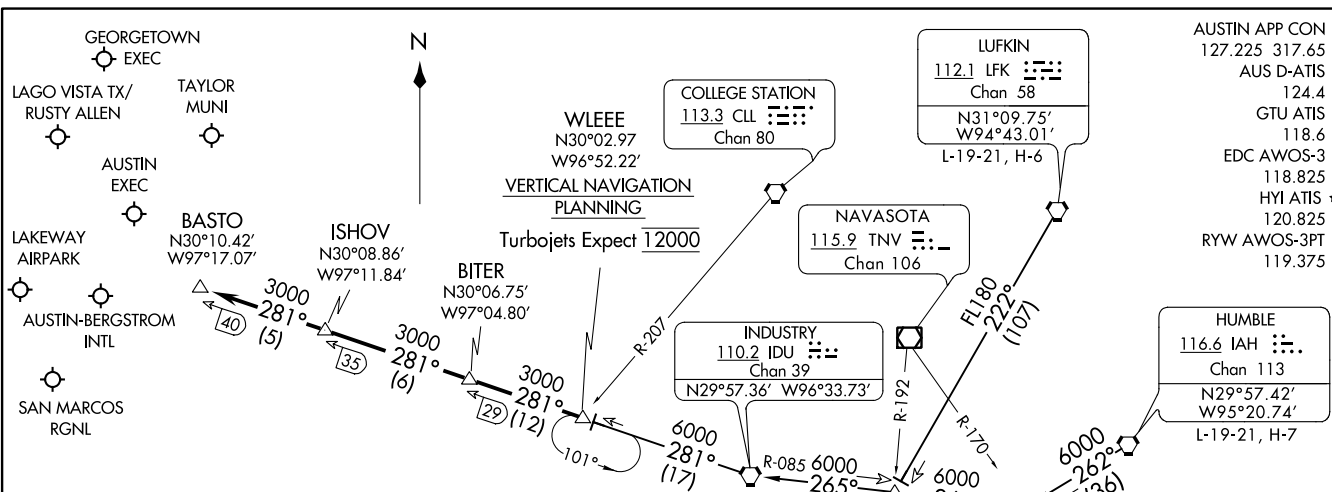


BITER NINE ARRIVAL
(WLEEE.BITER9) 25APR19



AUSTIN APP CON
127.225 317.65
AUS D-ATIS
124.4
GTU ATIS
118.6
EDC AWOS-3
118.825
HYI ATIS *
120.825
RYW AWOS-3PT
119.375

ARRIVAL ROUTE DESCRIPTION

HUMBLE TRANSITION (IAH.BITER9): From over IAH VORTAC on IAH R-262 to SHYNR INT, then on IDU R-085 to IDU VORTAC, then on IDU R-281 to WLEEE INT. Thence . . .

INDUSTRY TRANSITION (IDU.BITER9): From over IDU VORTAC on IDU R-281 to WLEEE INT. Thence . . .

LUFKIN TRANSITION (LFK.BITER9): From over LFK VORTAC on LFK R-222 to BOCCK INT, then on IDU R-085 to IDU VORTAC, then on IDU R-281 to WLEEE INT. Thence . . .

. . . From over WLEEE on IDU R-281 to BITER, then on IDU R-281 to ISHOV, then on IDU R-281 to BASTO. Expect vectors to final approach course at or prior to BASTO.

NOTE: RADAR required.
NOTE: DME required.
NOTE: DME/DME/IRU or GPS equipped aircraft must file the WLEEE (RNAV) or POTRR (RNAV) STAR.

NOTE: Chart not to scale.

AUSTIN, TEXAS

(WLEEE.BITER9) 22195
BITER NINE ARRIVAL

AL-556 (FAA)

AUSTIN, TEXAS

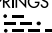
(KALLA.KALLA4) 22195

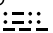
AL-556 (FAA)

KALLA FOUR ARRIVAL

AUSTIN, TEXAS

AUSTIN APP CON
119.0 370.85
AUS D-ATIS
124.4
GTU ATIS
118.6

GOOCH SPRINGS
112.5 AGJ 
Chan 72

LLANO
108.2 LLO 
Chan 19
N30°47.78'-W98°47.24'
L-19, H-6

4100
089°
(37)


KALLA
N30°43.26'
W98°04.64'
10000

GEORGETOWN
EXEC 

120°
(35)

LAKEWAY
AIRPARK 

Ldg KAUS, KGTU, K3R9

CENTEX
112.8 CWK 
Chan 75
N30°22.71'-W97°31.79'

10000

AUSTIN-BERGSTROM INTL 

NOTE: RADAR required.

NOTE: DME/DME/IRU or GPS equipped turbojet
and turboprop aircraft landing KAUS must
file the LAIKS (RNAV) STAR.

NOTE: Chart not to scale.

ARRIVAL ROUTE DESCRIPTION

LLANO TRANSITION (LLO.KALLA4): From over LLO VORTAC on LLO R-089
to KALLA. Thence

. . . . from over KALLA on CWK R-300 to cross CWK VORTAC at 10000.
Expect vectors to final approach course.

KALLA FOUR ARRIVAL
(KALLA.KALLA4) 15AUG19

AUSTIN, TEXAS

SC-3, 22 FEB 2024 to 21 MAR 2024

SC-3, 22 FEB 2024 to 21 MAR 2024

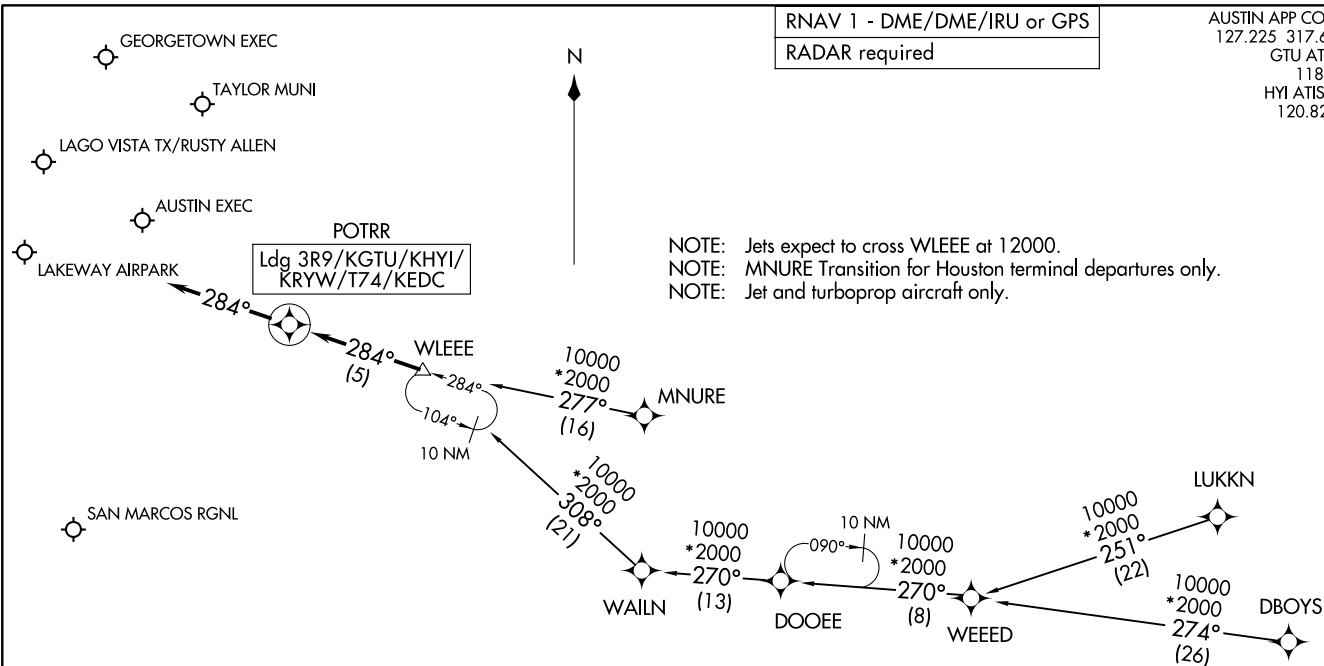
POTRR TWO ARRIVAL (RNAV)
(WLEEE.POTRR2) 14JUL22

(WLEEE.POTRR2) 22195
POTRR TWO ARRIVAL (RNAV)

AUSTIN APP CON
127.225 317.65
GTU ATIS
118.6
HYI ATIS ★
120.825

RNAV 1 - DME/DME/IRU or GPS
RADAR required

NOTE: Jets expect to cross WLEEE at 12000.
NOTE: MNURE Transition for Houston terminal departures only.
NOTE: Jet and turboprop aircraft only.



NOTE: Chart not to scale.

ARRIVAL ROUTE DESCRIPTION

- DBOYS TRANSITION (DBOYS.POTRR2)
- LUKKN TRANSITION (LUKKN.POTRR2)
- MNURE TRANSITION (MNURE.POTRR2)
- WEED TRANSITION (WEED.POTRR2)

LANDING ALL AIRPORTS: From WLEEE on track 284° to POTRR, then on track 284°. Expect RADAR vectors to final approach course.

AUSTIN, TEXAS

AUSTIN, TEXAS

AL-5891 (FAA)