

AEROZ TWO DEPARTURE (RNAV)
 (AEROZ2.AEROZ) 22APR21

ATIS
 118.6
 CLNC DEL
 119.125
 CLNC DEL (When twr closed)
 121.1
 GND CON
 119.125
 GEORGETOWN TOWER *
 120.225
 UNICOM
 123.0
 AUSTIN DEP CON
 119.0 370.85


 SAN ANGELO
 SJT

TAKEOFF MINIMUMS

Rwy 11, 29, 36: Standard.
 Rwy 18: 200-1¼ or standard with minimum climb of 250' per NM to 1000.

**TOP ALTITUDE:
ASSIGNED BY ATC**

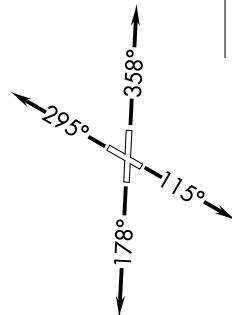
NOTE: RADAR required.
 NOTE: DME/DME/IRU or GPS required.
 NOTE: RNAV 1.

FL180
 293°
 (91)

AEROZ

293°
 (33)

AMUSE
 5000



NOTE: Chart not to scale.

DEPARTURE ROUTE DESCRIPTION

TAKEOFF RUNWAY 11: Climb on heading 115° or as assigned by ATC for vectors to cross AMUSE at or above 5000, thence....

TAKEOFF RUNWAY 18: Climb on heading 178° or as assigned by ATC for vectors to cross AMUSE at or above 5000, thence....

TAKEOFF RUNWAY 29: Climb on heading 295° or as assigned by ATC for vectors to cross AMUSE at or above 5000, thence....

TAKEOFF RUNWAY 36: Climb on heading 358° or as assigned by ATC for vectors to cross AMUSE at or above 5000, thence....

... on track 293° to AEROZ, then on SAN ANGELO TRANSITION. Maintain altitude assigned by ATC. Expect filed altitude 10 minutes after departure.

SAN ANGELO TRANSITION (AEROZ2.SJT)

GEORGETOWN, TEXAS
 GEORGETOWN EXEC (GTTU)

(AEROZ2.AEROZ) 22195
 AEROZ TWO DEPARTURE (RNAV) AL-5724

GEORGETOWN EXEC (GTTU)
 GEORGETOWN, TEXAS

(BNDIA3.BNDIA) 22195

AL-5724 (FAA)

GEORGETOWN EXEC (GTU)

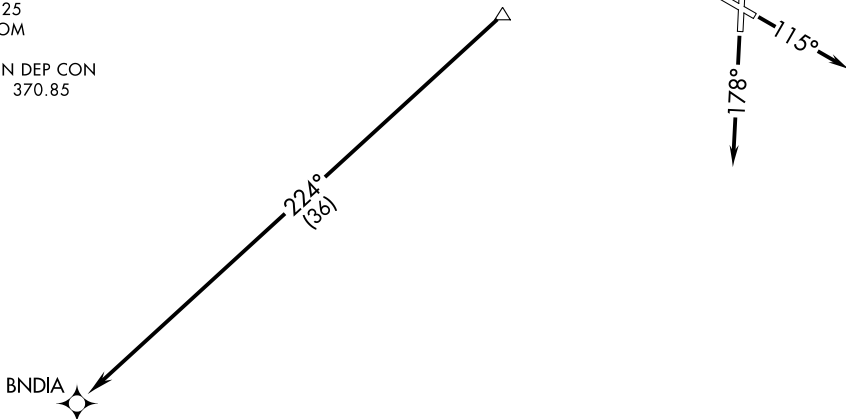
BNDIA THREE DEPARTURE (RNAV)

GEORGETOWN, TEXAS

ATIS
 118.6
 CLNC DEL
 119.125
 CLNC DEL (when twr closed)
 121.1
 GND CON
 119.125
 GEORGETOWN TOWER ★
 120.225
 UNICOM
 123.0
 AUSTIN DEP CON
 119.0 370.85

**TOP ALTITUDE:
ASSIGNED BY ATC**

GARDS
5000



NOTE: RADAR required.
 NOTE: DME/DME/IRU or GPS required.
 NOTE: RNAV 1.

TAKEOFF MINIMUMS:

Rwys 11, 29, 36: Standard.

Rwy 18: 200-1¼ or standard with minimum climb of 250' per NM to 1000.

NOTE: Chart not to scale.



DEPARTURE ROUTE DESCRIPTION

TAKEOFF RUNWAY 11: Climb on heading 115° or as assigned by ATC for vectors to cross GARDS at or above 5000, thence....

TAKEOFF RUNWAY 18: Climb on heading 178° or as assigned by ATC for vectors to cross GARDS at or above 5000, thence....

TAKEOFF RUNWAY 29: Climb on heading 295° or as assigned by ATC for vectors to cross GARDS at or above 5000, thence....

TAKEOFF RUNWAY 36: Climb on heading 358° or as assigned by ATC for vectors to cross GARDS at or above 5000, thence....

....on track 224° BNDIA. Maintain altitude assigned by ATC. Expect filed altitude 10 minutes after departure.

BNDIA THREE DEPARTURE (RNAV)

(BNDIA3.BNDIA) 22APR21

GEORGETOWN, TEXAS

GEORGETOWN EXEC (GTU)

SC-3, 22 FEB 2024 to 21 MAR 2024

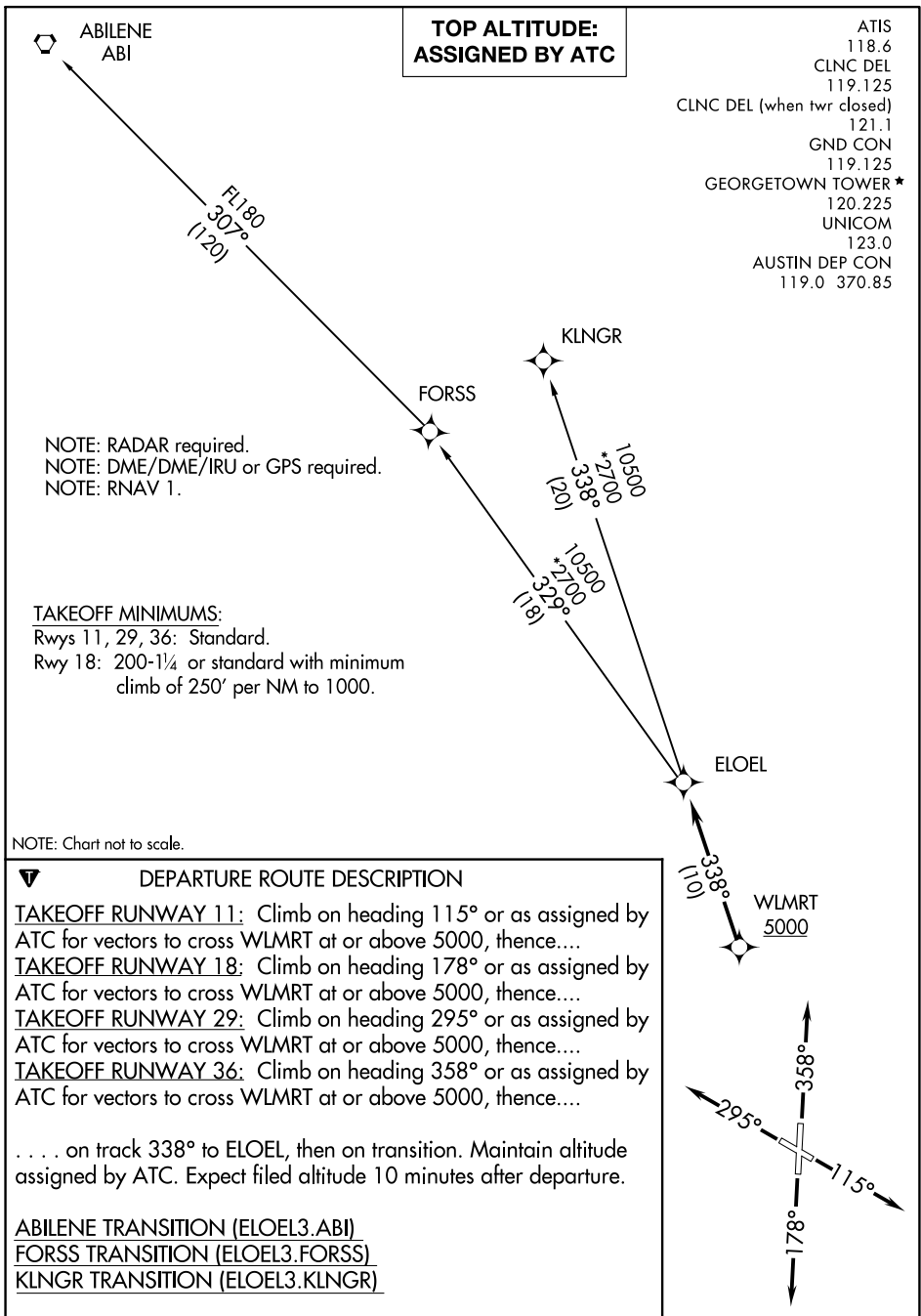
SC-3, 22 FEB 2024 to 21 MAR 2024

(ELOEL3.ELOEL) 22195

ELOEL THREE DEPARTURE (RNAV) AL-5724 (FAA)

GEORGETOWN EXEC (GTU)

GEORGETOWN, TEXAS



SC-3, 22 FEB 2024 to 21 MAR 2024

SC-3, 22 FEB 2024 to 21 MAR 2024

ELOEL THREE DEPARTURE (RNAV)
(ELOEL3.ELOEL) 22APR21

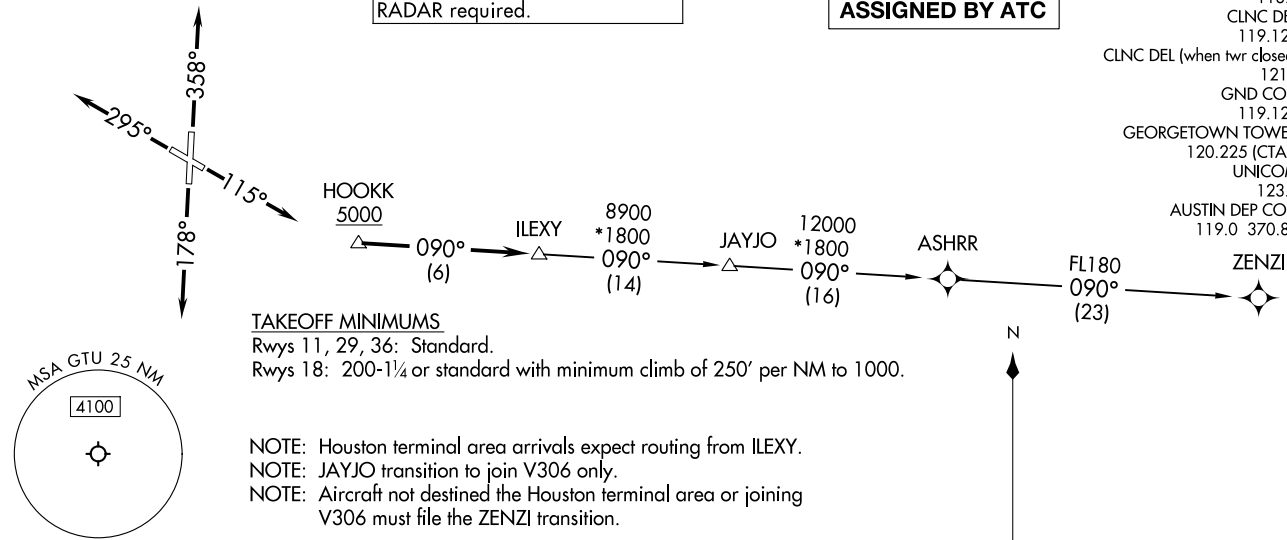
GEORGETOWN, TEXAS
GEORGETOWN EXEC (GTU)

ILEXY FOUR DEPARTURE (RNAV)
(ILEXY4.ILEXY) 15 JUN 23

RNAV 1 - DME/DME/IRU or GPS.
RADAR required.

**TOP ALTITUDE:
ASSIGNED BY ATC**

ATIS 118.6
CLNC DEL 119.125
CLNC DEL (when twr closed) 121.1
GND CON 119.125
GEORGETOWN TOWER★ 120.225 (CTAF)
UNICOM 123.0
AUSTIN DEP CON 119.0 370.85



TAKEOFF MINIMUMS

Rwys 11, 29, 36: Standard.
Rwys 18: 200-1¼ or standard with minimum climb of 250' per NM to 1000.

NOTE: Houston terminal area arrivals expect routing from ILEXY.
NOTE: JAYJO transition to join V306 only.
NOTE: Aircraft not destined the Houston terminal area or joining V306 must file the ZENZI transition.

NOTE: Chart not to scale.

(ILEXY4.ILEXY) 23166
ILEXY FOUR DEPARTURE (RNAV) AL-5724 (FAA)

DEPARTURE ROUTE DESCRIPTION

TAKEOFF RUNWAY 11: Climb on heading 115° or as assigned by ATC for vectors to cross HOOKK at or above 5000, thence. . . .
TAKEOFF RUNWAY 18: Climb on heading 178° or as assigned by ATC for vectors to cross HOOKK at or above 5000, thence. . . .
TAKEOFF RUNWAY 29: Climb on heading 295° or as assigned by ATC for vectors to cross HOOKK at or above 5000, thence. . . .
TAKEOFF RUNWAY 36: Climb on heading 358° or as assigned by ATC for vectors to cross HOOKK at or above 5000, thence. . . .

. . . . on track 090° to ILEXY, then on transition. Maintain altitude assigned by ATC. Expect filed altitude 10 minutes after departure.

JAYJO TRANSITION (ILEXY4.JAYJO)
ZENZI TRANSITION (ILEXY4.ZENZI)

GEORGETOWN, TEXAS
GEORGETOWN EXEC (GTU)

GEORGETOWN EXEC (GTU)
GEORGETOWN, TEXAS

(MUCKY3.MUCKY) 22195

AL-5724 (FAA)

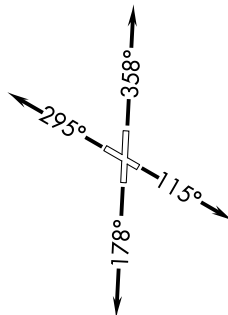
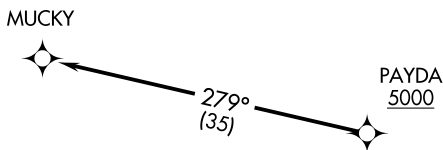
GEORGETOWN EXEC (GTU)

MUCKY THREE DEPARTURE (RNAV)

GEORGETOWN, TEXAS

ATIS
 118.6
 CLNC DEL
 119.125
 CLNC DEL (when twr closed)
 121.1
 GND CON
 119.125
 GEORGETOWN TOWER ★
 120.225
 UNICOM
 123.0
 AUSTIN DEP CON
 119.0 370.85

**TOP ALTITUDE:
ASSIGNED BY ATC**



NOTE: RADAR required.
 NOTE: DME/DME/IRU or GPS required.
 NOTE: RNAV 1.

TAKEOFF MINIMUMS:

Rwys 11, 29, 36: Standard.
 Rwy 18: 200-1¼ or standard with minimum
 climb of 250' per NM to 1000.

NOTE: Chart not to scale.



DEPARTURE ROUTE DESCRIPTION

TAKEOFF RUNWAY 11: Climb on heading 115° or as assigned by ATC for vectors to cross PAYDA at or above 5000, thence. . . .

TAKEOFF RUNWAY 18: Climb on heading 178° or as assigned by ATC for vectors to cross PAYDA at or above 5000, thence. . . .

TAKEOFF RUNWAY 29: Climb on heading 295° or as assigned by ATC for vectors to cross PAYDA at or above 5000, thence. . . .

TAKEOFF RUNWAY 36: Climb on heading 358° or as assigned by ATC for vectors to cross PAYDA at or above 5000, thence. . . .

. . . on track 279° to MUCKY. Maintain altitude assigned by ATC.
 Expect filed altitude 10 minutes after departure.

MUCKY THREE DEPARTURE (RNAV)

(MUCKY3.MUCKY) 22APR21

GEORGETOWN, TEXAS
GEORGETOWN EXEC (GTU)

SC-3, 22 FEB 2024 to 21 MAR 2024

SC-3, 22 FEB 2024 to 21 MAR 2024

(SAYBR3.SAYBR) 22195

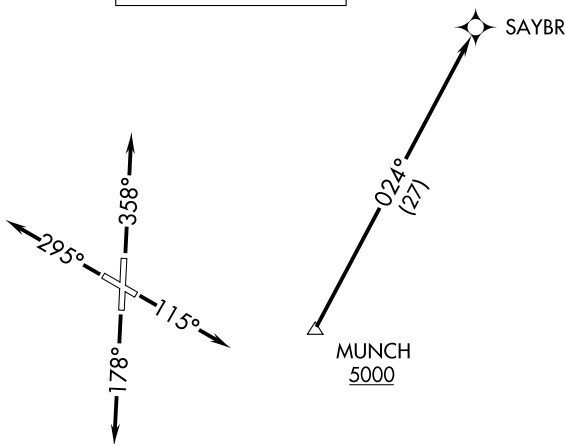
SAYBR THREE DEPARTURE (RNAV) AL-5724 (FAA)

GEORGETOWN EXEC(GTU)

GEORGETOWN, TEXAS

ATIS
 118.6
 CLNC DEL
 119.125
 121.1 (when twr closed)
 GND CON
 119.125
 GEORGETOWN TOWER★
 120.225
 UNICOM
 123.0
 AUSTIN DEP CON
 119.0 370.85

**TOP ALTITUDE:
ASSIGNED BY ATC**



- NOTE: RADAR required.
- NOTE: DME/DME/IRU or GPS required.
- NOTE: RNAV 1.
- NOTE: For DFW terminal area arrivals at FL230 or below only.

TAKEOFF MINIMUMS

Rwys 11, 29, 36: Standard.

Rwy 18: 200-1¼ or standard with minimum climb of 250' per NM to 1000.

NOTE: Chart not to scale.



DEPARTURE ROUTE DESCRIPTION

TAKEOFF RUNWAY 11: Climb on heading 115° or as assigned by ATC for vectors to cross MUNCH at or above 5000, thence. . . .

TAKEOFF RUNWAY 18: Climb on heading 178° or as assigned by ATC for vectors to cross MUNCH at or above 5000, thence. . . .

TAKEOFF RUNWAY 29: Climb on heading 295° or as assigned by ATC for vectors to cross MUNCH at or above 5000, thence. . . .

TAKEOFF RUNWAY 36: Climb on heading 358° or as assigned by ATC for vectors to cross MUNCH at or above 5000, thence. . . .

. . . . on track 024° to SAYBR. Maintain altitude assigned by ATC.
Expect filed altitude 10 minutes after departure.

SAYBR THREE DEPARTURE (RNAV)

(SAYBR3.SAYBR) 22APR21

GEORGETOWN, TEXAS
GEORGETOWN EXEC(GTU)

SC-3, 22 FEB 2024 to 21 MAR 2024

SC-3, 22 FEB 2024 to 21 MAR 2024