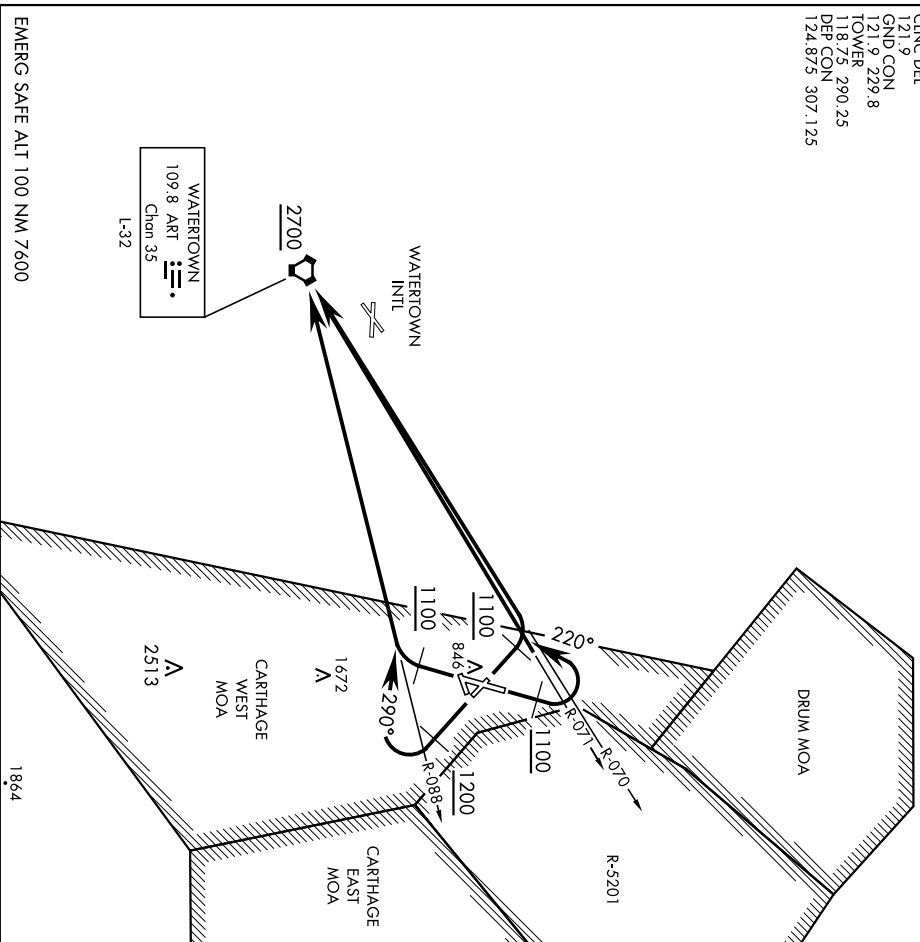


**WATERTOWN-TWO DEPARTURE (ART 2•ART)**

WHEELER-SACK AAF (KGTB)  
FORT DRUM, NY

AL-5754 (USA)

ARTS 119 525  
CINC DEL  
121.9  
GND CON  
121.9 229.8  
TOWER  
118.75 290.25  
DEP CON  
124.875 307.125



EMERG SAFE ALT 100 NM NM 7600

**DEPARTURE ROUTE DESCRIPTION**

**TAKEOFF RWY 15:** Climb via heading 147° to 1200, then climbing right turn to 2700 via heading 290° and ART R-088 to ART VORTAC, thence...

**TAKEOFF RWY 21:** Climb via heading 209° to 1100, then climbing right turn to 2700 via ART R-088 to ART VORTAC, thence...

**TAKEOFF RWY 03:** Climb via heading 029° to 1100, then climbing left turn to 2700 via heading 220° and ART R-071 to ART VORTAC, thence...

**TAKEOFF RWY 33:** Climb via heading 327° to 1100, then climbing left turn to 2700 via ART R-070 to ART VORTAC, thence...

...cross ART VORTAC at or above 2700 via assigned route.

**WATERTOWN-TWO DEPARTURE (ART 2•ART)**

FORT DRUM, NY  
WHEELER-SACK AAF (KGTB)