

WAAS CH 97328 W13A	APP CRS 131°	Rwy Idg TDZE Apt Elev	7000 208 208
--	------------------------	-----------------------------	---

RNAV (GPS) RWY 13

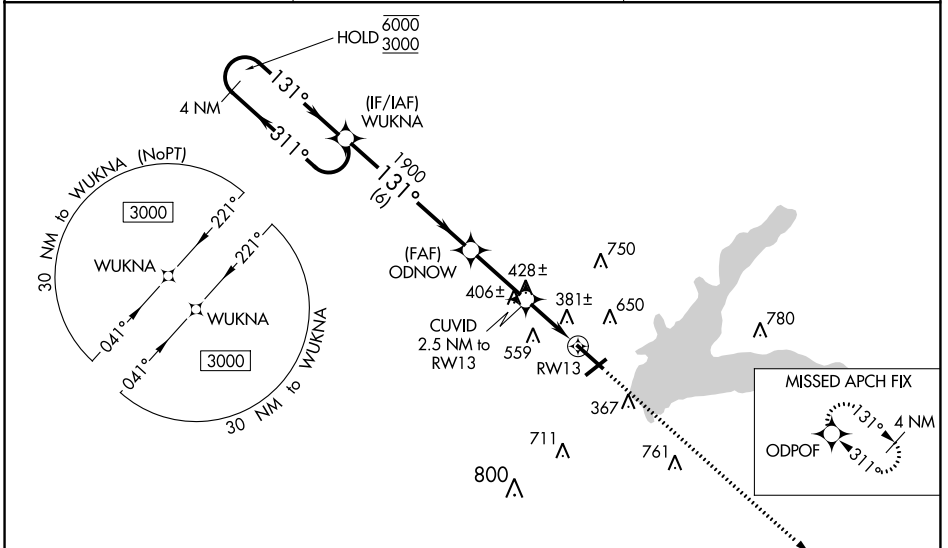
GRENADA MUNI (GNF)

RNP APCH.

For uncompensated Baro-VNAV systems, procedure NA below -9°C or above 54°C. Baro-VNAV and VDP NA when using Greenwood altimeter setting. For inop ALS, increase LNAV/VNAV all Cats and LNAV Cat C/D visibility to 1½ SM. When local altimeter setting not received, use Greenwood altimeter setting: Increase all DAs 65 feet; increase all MDAs 80 feet and visibility LNAV Cats C and D and Circling all Cats ¼ SM. For inop ALS when using Greenwood altimeter setting, increase LPV all Cats visibility to ¾ SM and LNAV/VNAV all Cats visibility to 1½ SM. Circling Rwy 4, 22 NA at night.

MALSRS
MISSED APPROACH: Climb to 3000 direct ODPOF and hold.

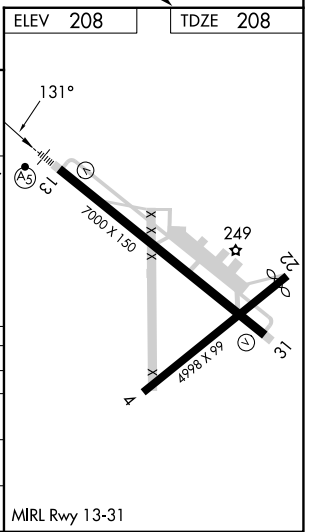
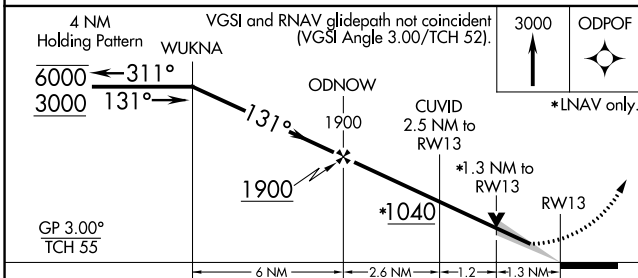
AWOS-3PT 118.025	MEMPHIS CENTER 128.5 279.55	UNICOM 122.8 (CTAF)
----------------------------	---------------------------------------	-------------------------------



SC-4, 22 FEB 2024 to 21 MAR 2024

SC-4, 22 FEB 2024 to 21 MAR 2024

ELEV 208	TDZE 208
----------	----------



CATEGORY	A	B	C	D
LPV DA		453-1/2	245 (300-1/2)	
LNAV/VNAV DA		666-1/8	458 (500-1/8)	
LNAV MDA	680-1/2	472 (500-1/2)	680-1	472 (500-1)
CIRCLING	1000-1	792 (800-1)	1000-2 3/4	1060-2 3/4
			792 (800-2 3/4)	852 (900-2 3/4)

MIRL Rwy 13-31

RNAV (GPS) RWY 13

APP CRS	Rwy Idg	4726
231°	TDZE	201
	Apt Elev	208

RNAV (GPS) RWY 22

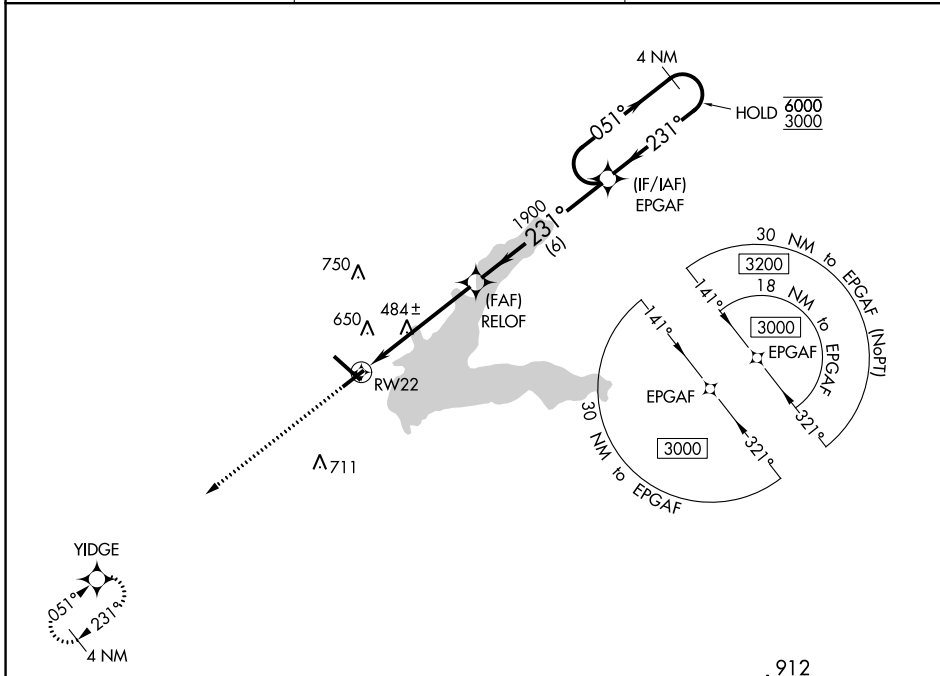
GRENADA MUNI (GNF)

RNP APCH.

▼ Rwy 22 helicopter visibility reduction below 1 SM NA. Straight-in Rwy 22 NA at night, Circling Rwy 4, 22 NA at night. When local altimeter setting not received, use Greenwood altimeter setting: increase all MDAs 80 feet and visibility LNAV Cats C and D and Circling all Cats ¼ SM.

▲ MISSED APPROACH: Climb to 3000 direct YIDGE and hold.

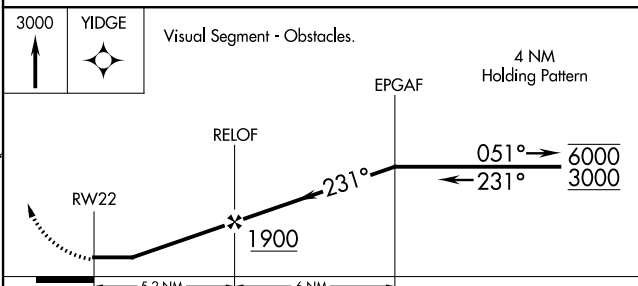
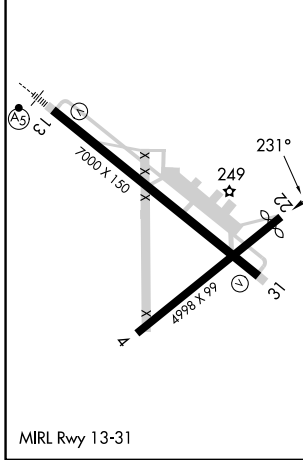
AWOS-3PT 118.025	MEMPHIS CENTER 128.5 279.55	UNICOM 122.8 (CTAF)
----------------------------	---------------------------------------	-------------------------------



SC-4, 22 FEB 2024 to 21 MAR 2024

SC-4, 22 FEB 2024 to 21 MAR 2024

ELEV 208	TDZE 201
----------	----------



CATEGORY	A	B	C	D
LNAV MDA	740-1	539 (600-1)	740-1½	539 (600-1½)
■ CIRCLING	1000-1	792 (800-1)	1000-2¼ 792 (800-2¼)	1060-2¾ 852 (900-2¾)

WAAS CH 40029 W31A	APP CRS 311°	Rwy Idg 7000 TDZE 202 Apt Elev 208
---------------------------------	------------------------	---

RNAV (GPS) RWY 31

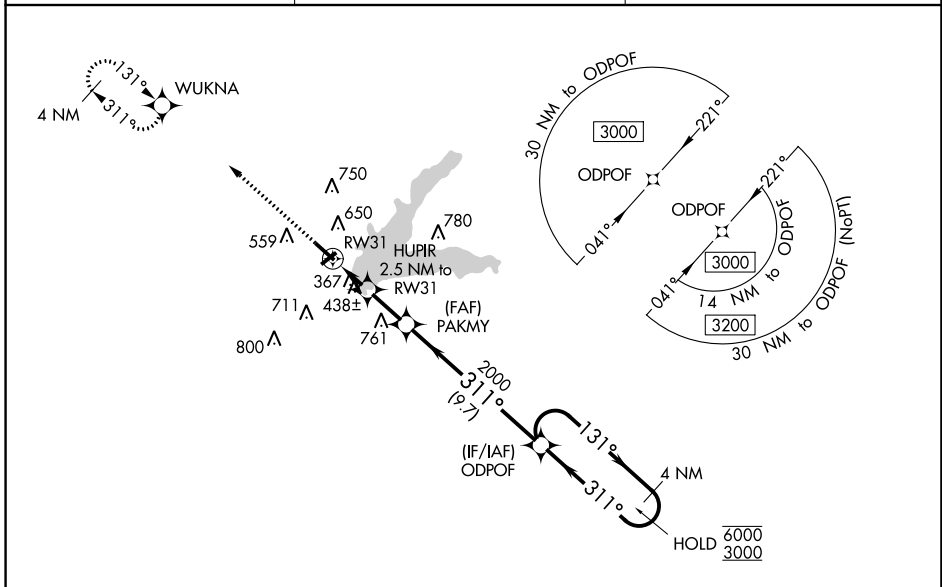
GRENADA MUNI (GNF)

RNP APCH.

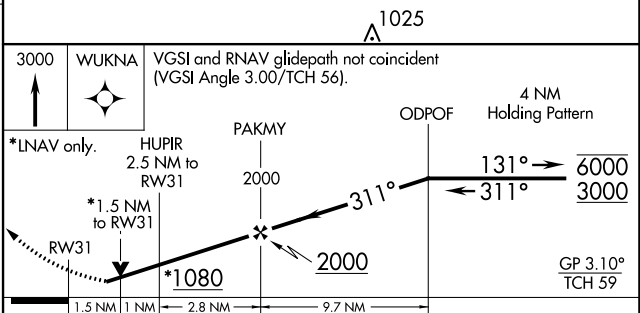
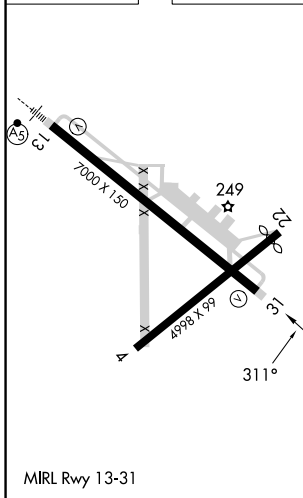
▼ Baro-VNAV and VDP NA when using Greenwood altimeter setting. Rwy 31 helicopter visibility reduction below $\frac{3}{4}$ SM NA. For uncompensated Baro-VNAV systems, LNAV/VNAV NA below -9°C or above 46°C. When local altimeter setting not received use Greenwood altimeter setting: increase all DAs 65 feet and visibility LNAV/VNAV Cat C and D $\frac{1}{8}$ SM; increase all MDAs 80 feet and visibility LNAV Cats C and D and Circling all Cats $\frac{3}{8}$ SM. Circling Rwy 4, 22, NA at night.

▲ MISSED APPROACH: Climb to 3000 direct WUKNA and hold.

AWOS-3PT 118.025	MEMPHIS CENTER 128.5 279.55	UNICOM 122.8 (CTAF)
----------------------------	---------------------------------------	-------------------------------



ELEV 208	TDZE 202
----------	----------



CATEGORY	A	B	C	D
LPV DA	513-1 311 (400-1)			
LNAV/VNAV DA	679-1½ 477 (500-1½)			
LNAV MDA	720-1	518 (600-1)	720-1¼	518 (600-1¼)
<input checked="" type="checkbox"/> CIRCLING	1000-1	792 (800-1)	1000-2¼ 792 (800-2¼)	1060-2¾ 852 (900-2¾)

SC-4, 22 FEB 2024 to 21 MAR 2024

SC-4, 22 FEB 2024 to 21 MAR 2024

APP CRS	Rwy Idg	4998
051°	TDZE	197
	Apt Elev	208

RNAV (GPS) RWY 4

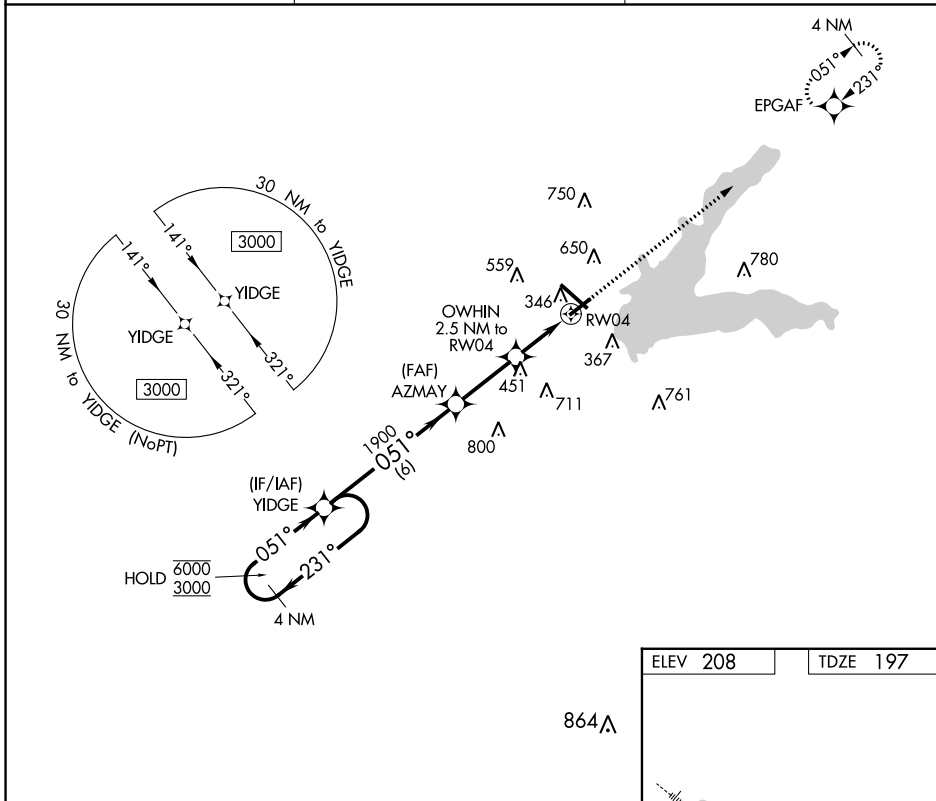
GRENADA MUNI (GNF)

RNP APCH:

⚠ Rwy 4 helicopter visibility reduction below 1 SM NA. Straight-in Rwy 4 NA at night, Circling Rwy 4, 22 NA at night. When local altimeter setting not received, use Greenwood altimeter setting; increase all MDAs 80 feet and visibility LNAV Cats C and D and Circling all Cats ¼ SM.

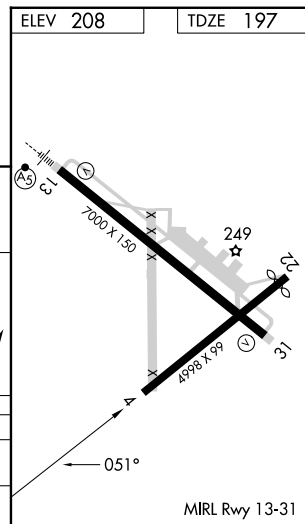
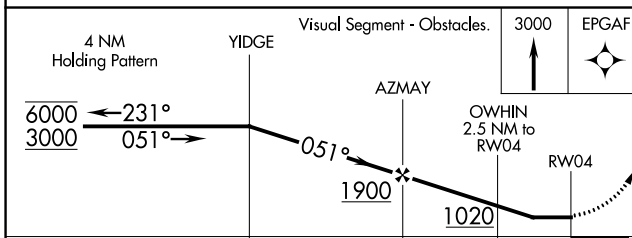
MISSED APPROACH: Climb to 3000 direct EPGAF and hold.

AWOS-3PT 118.025	MEMPHIS CENTER 128.5 279.55	UNICOM 122.8 (CTAF)
----------------------------	---------------------------------------	-------------------------------



SC-4, 22 FEB 2024 to 21 MAR 2024

SC-4, 22 FEB 2024 to 21 MAR 2024



CATEGORY	A	B	C	D
LNAV MDA	680-1	483 (500-1)	680-1 $\frac{3}{8}$	483 (500-1 $\frac{3}{8}$)
C CIRCLING	1000-1	792 (800-1)	1000-2 $\frac{1}{4}$ 792 (800-2 $\frac{1}{4}$)	1060-2 $\frac{3}{4}$ 852 (900-2 $\frac{3}{4}$)