

WAAS CH 93827 W34A	APP CRS 342°	Rwy Idg TDZE Apt Elev	6080 620 628
--	------------------------	-----------------------------	---

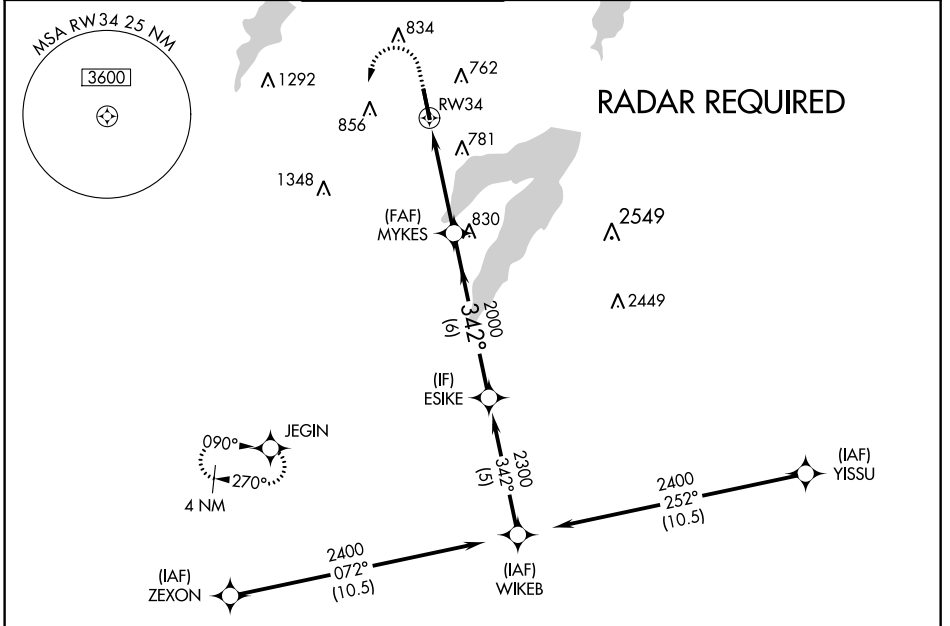
RNAV (GPS) RWY 34

ARLINGTON MUNI (GKY)

⚠ When local altimeter setting not received, use Grand Prairie Muni altimeter setting. For uncompensated Baro-VNAV systems, LNAV/VNAV NA below -16°C (4°F) or above 54°C (130°F). DME/DME RNP-0.3 NA. Inop table does not apply to LPV. For inop MALSR increase LNAV Cat A, B visibility to 1 mile.

MALSR MISSED APPROACH: Climb to 1100 then climbing left turn to 2800 direct JEGIN and hold.

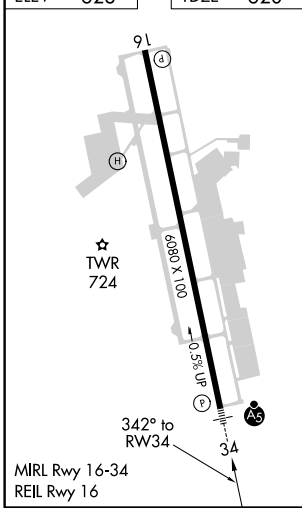
ASOS 127.375	REGIONAL APP CON 135.975 379.9	ARLINGTON TOWER * 128.625	GND CON 121.875	CLNC DEL 121.875	CLNC DEL 118.85 (When tower closed)	CTAF 128.625
------------------------	--	-------------------------------------	---------------------------	----------------------------	--	------------------------



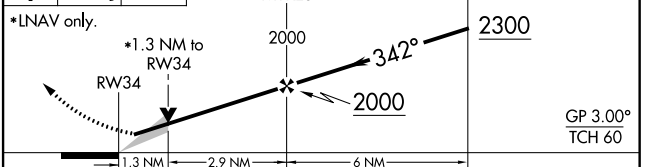
SC-2: 15 AUG 2019 to 12 SEP 2019

SC-2: 15 AUG 2019 to 12 SEP 2019

ELEV 628	TDZE 620
----------	----------



1100 2800 JEGIN VGSI and RNAV glidepath not coincident (VGSI Angle 3.00/TCH 55).



CATEGORY	A	B	C	D
LPV DA	820-3/4	200 (200-3/4)		NA
LNAV/VNAV DA	1021-3/4	401 (400-3/4)		NA
LNAV MDA	1060-3/4	440 (500-3/4)		NA
CIRCLING	1100-1	472 (500-1)	1100-1 1/2 472 (500-1 1/2)	NA

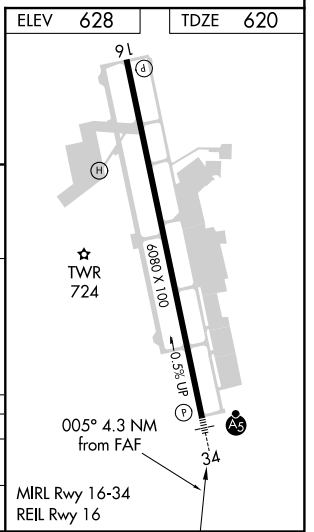
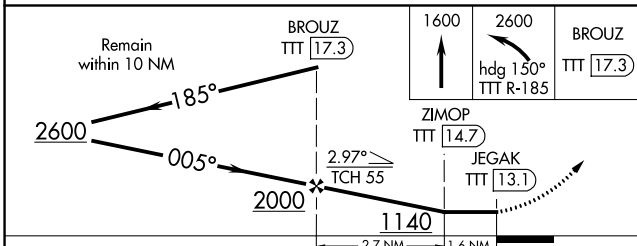
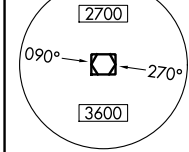
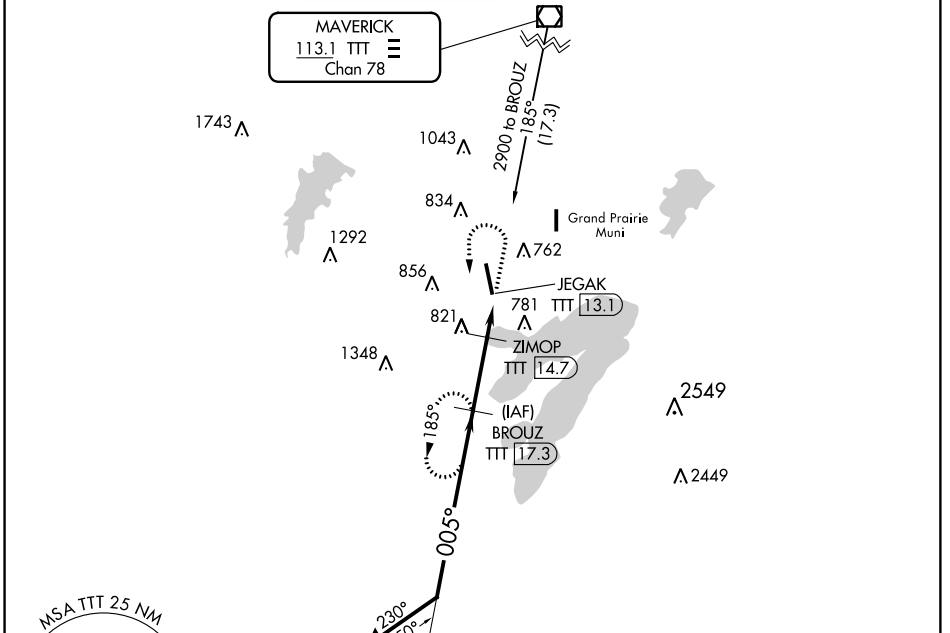
VOR/DME TTT 113.1 Chan 78	APP CRS 005°	Rwy Ldg TDZE 620 Apt Elev 628
---	------------------------	---

VOR/DME RWY 34

ARLINGTON MUNI (GKY)

<p>⚠ Inoperative table does not apply. Visibility reduction by helicopters NA. When local altimeter setting not received, use Grand Prairie Muni altimeter setting.</p>	<p>MALSR</p>	<p>MISSED APPROACH: Climb to 1600 then climbing left turn to 2600 via heading 150° and TTT VOR/DME R-185 to BROUZ/17.3 DME and hold.</p>
--	---------------------	---

ASOS 127.375	REGIONAL APP CON 135.975 379.9	ARLINGTON TOWER ★ 128.625	GND CON 121.875	CLNC DEL 121.875	CLNC DEL 118.85 (When tower closed)	CTAF 128.625
------------------------	--	-------------------------------------	---------------------------	----------------------------	--	------------------------



CATEGORY	A	B	C	D
S-34	1080-1	460 (500-1)	1080-1¼ 460 (500-1¼)	NA
CIRCLING	1100-1	472 (500-1)	1100-1½ 472 (500-1½)	NA

SC-2, 15 AUG 2019 to 12 SEP 2019

SC-2, 15 AUG 2019 to 12 SEP 2019

LOC/DME I-GKY 111.55 Chan 52 (Y)	APP CRS 342°	Rwy Idg TDZE Apt Elev 6080 620 628
---	------------------------	--

ILS or LOC/DME RWY 34

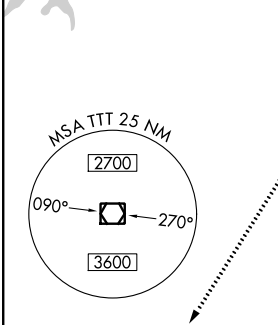
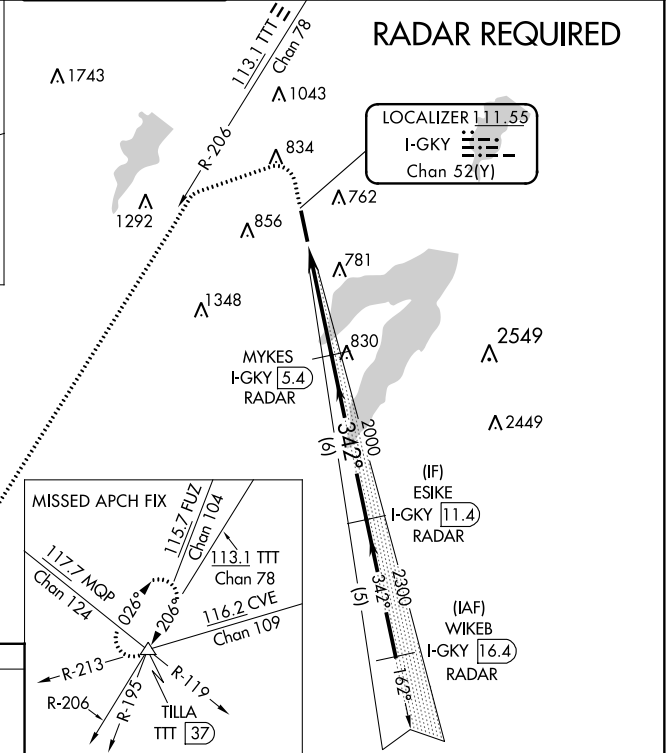
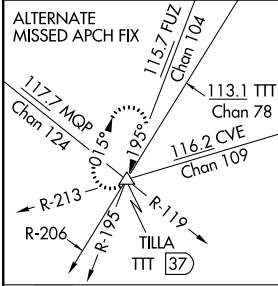
ARLINGTON MUNI (GKY)

⚠ When local altimeter setting not received, use Grand Prairie Muni altimeter setting. Inop table does not apply to S-ILS 34.
 ⚠ For inop MALSRL increase S-LOC 34 Cat A, B visibility to 1 mile.

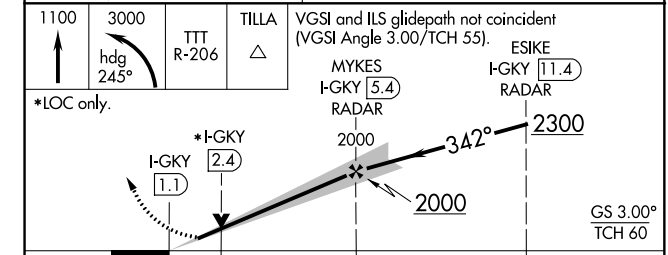
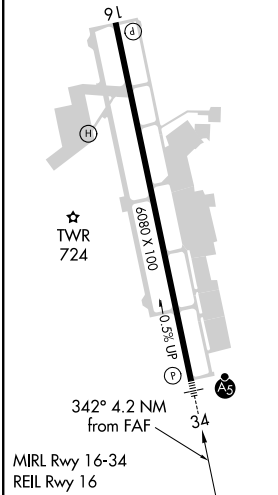


MISSED APPROACH: Climb to 1100 then climbing left turn to 3000 via heading 245° and TTT VOR/DME R-206 to TILLA INT/TTT 37 DME and hold.

ASOS 127.375	REGIONAL APP CON 135.975 379.9	ARLINGTON TOWER ★ 128.625	GND CON 121.875	CLNC DEL 121.875	CLNC DEL 118.85 (When tower closed)	CTAF 128.625
------------------------	--	-------------------------------------	---------------------------	----------------------------	--	------------------------



ELEV 628	TDZE 620
----------	----------



CATEGORY	A	B	C	D
S-ILS 34	820-3/4	200 (200-3/4)		NA
S-LOC 34	1060-3/4	440 (500-3/4)		NA
CIRCLING	1100-1	472 (500-1)	1100-1 1/2 472 (500-1 1/2)	NA

SC-2. 15 AUG 2019 to 12 SEP 2019

SC-2. 15 AUG 2019 to 12 SEP 2019