

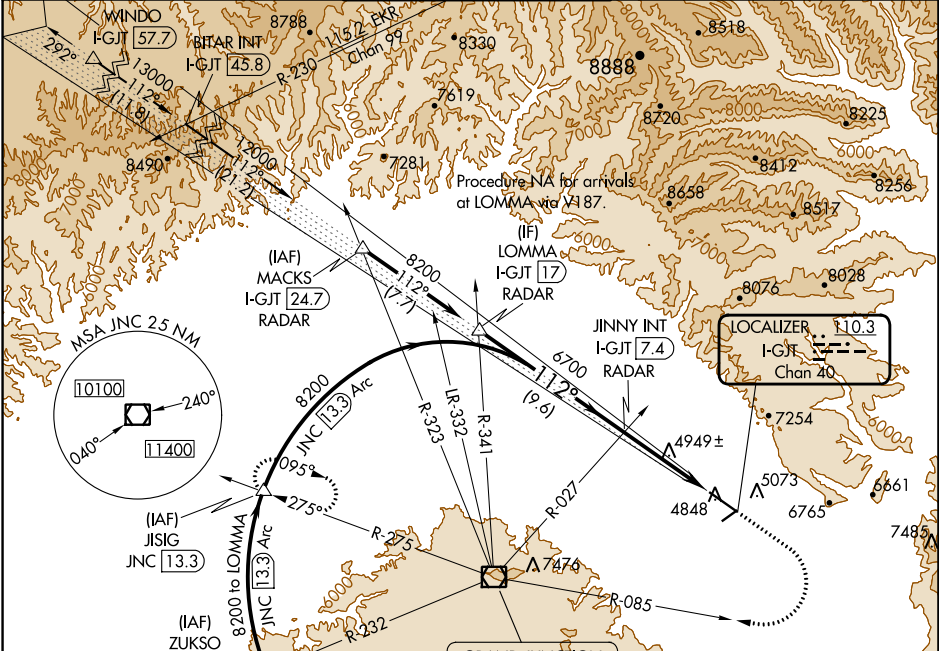
LOC/DME I-GJT 110.3 Chan 40	APP CRS 112°	Rwy Idg 10503 TDZE 4833 Apt Elev 4861
--	------------------------	--

ILS or LOC RWY 11

GRAND JUNCTION RGNL (GJT)

DME required.		MALSR	MISSED APPROACH: Climb to 6700 then climbing right turn to 9000 via JNC VOR/DME R-085 to JNC VOR/DME then via JNC VOR/DME R-275 to JISIG/JNC 13.3 DME and hold.
<p>▼ For inop ALS, increase S-LOC 11 Cats C and D visibility to RVR 5500.</p> <p>▲ Circling NA for Cat D north of Rwy 11-29.</p> <p>* RVR 1800 authorized with the use of FD or AP or HUD to DA.</p>			

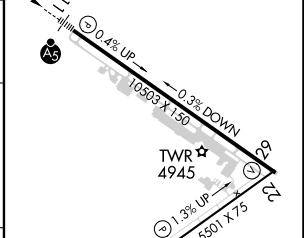
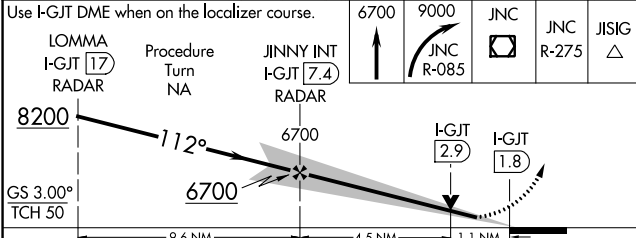
ATIS 118.55	DENVER APP CON * 119.7 317.4	GRAND JUNCTION TOWER * 118.1 (CTAF) 257.8	GND CON 121.7 257.8	UNICOM 122.95
-----------------------	--	---	-------------------------------	-------------------------



SW-1, 22 FEB 2024 to 21 MAR 2024

SW-1, 22 FEB 2024 to 21 MAR 2024

ELEV 4861	TDZE 4833
-----------	-----------



Use I-GJT DME when on the localizer course.	6700	9000	JNC	JNC	JISIG
LOMMA I-GJT (17) RADAR	Procedure Turn NA	JINNY INT I-GJT (7.4) RADAR	JNC R-085	JNC R-275	JISIG
8200	6700	6700	I-GJT (2.9)	I-GJT (1.8)	
GS 3.00° TCH 50	9.6 NM	4.5 NM	1.1 NM		
CATEGORY	A	B	C	D	
S-ILS 11	5033/24 200 (200-½)				
S-LOC 11	5200/24 367 (400-½)	5200/35 367 (400-½)	5200/40 367 (400-¾)		
CIRCLING	5380-1 519 (600-1)	5520-1 659 (700-1)	5620-2¼ 759 (800-2¼)	5620-2½ 759 (800-2½)	

HIRL Rwy 11-29	MIRL Rwy 4-22	REIL Rws 4, 22 and 29			
FAF to MAP 5.7 NM					
Knots	60	90	120	150	180
Min:Sec	5:42	3:48	2:51	2:17	1:54

LOC/DME I-ACD 109.7 Chan 34	APP CRS 312°	Rwy Idg 10503 TDZE 4858 Apt Elev 4861
---	------------------------	--

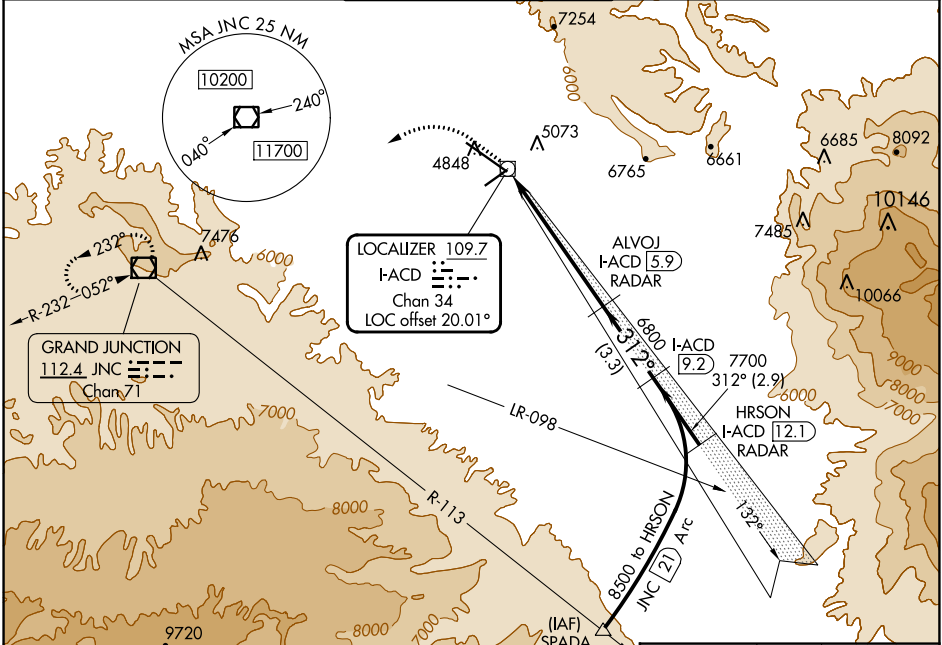
LDA/DME RWY 29

GRAND JUNCTION RGNL (GJT)

Autopilot coupled approach NA inside 2.0 DME. Circling NA for Cat D north of Rwy 11-29.

MISSED APPROACH: Climb to 7000 via heading 300°, then climbing left turn to 10000 direct JNC VOR/DME and hold.

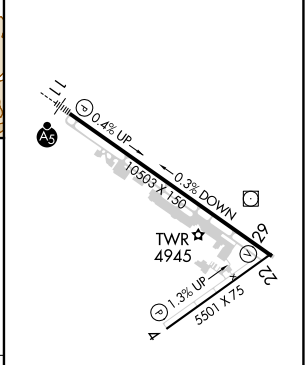
ATIS 118.55	DENVER APP CON * 119.7 317.4	GRAND JUNCTION TOWER * 118.1 (CTAF) 257.8	GND CON 121.7 257.8	UNICOM 122.95
-----------------------	--	---	-------------------------------	-------------------------



ELEV 4861	D	TDZE 4858
-----------	----------	-----------



7000	10000	JNC
hdg 300°		
Use I-ACD DME when on LOC course.	I-ACD 0.6	I-ACD 5.9 RADAR
	≤ 2.99° TCH 50	312°
	6800	7700
		8500
		HRSON I-ACD 12.1 RADAR
		Procedure Turn NA
	0.6	5.4 NM
		3.3 NM
		2.9 NM



CATEGORY	A	B	C	D
S-29	5400-1	542 (600-1)	5400-1½ 542 (600-1½)	5400-1¾ 542 (600-1¾)
CIRCLING	5400-1 539 (600-1)	5520-1 659 (700-1)	5620-2¼ 759 (800-2¼)	5620-2½ 759 (800-2½)

HIRL Rwy 11-29

MIRL Rwy 4-22

REIL Rws 4, 22 and 29

SW-1, 22 FEB 2024 to 21 MAR 2024

SW-1, 22 FEB 2024 to 21 MAR 2024

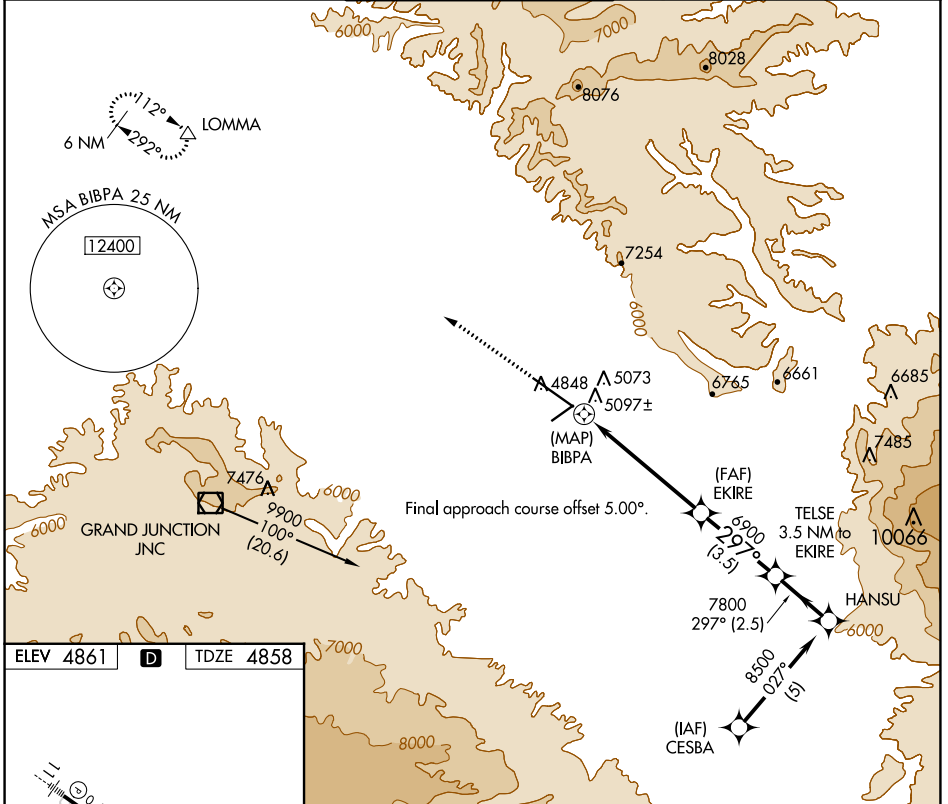
APP CRS 297°	Rwy Idg 10503
	TDZE 4858
	Apt Elev 4861

RNAV (GPS) RWY 29

GRAND JUNCTION RGNL (GJT)

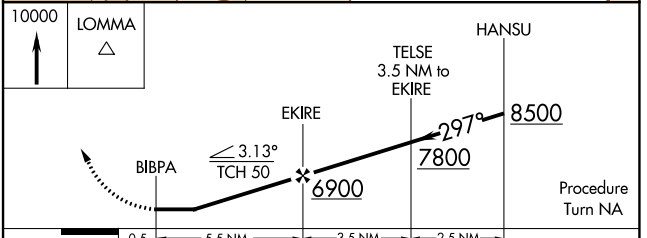
RNP APCH - GPS.	MISSED APPROACH: Climb to 10000 direct to LOMMA WP and hold.
<p>▼ Circling NA for Cat D north of Rwy 11-29. Rwy 29 helicopter visibility reduction below 3/4 SM NA.</p> <p>▲</p>	

ATIS 118.55	DENVER APP CON * 119.7 317.4	GRAND JUNCTION TOWER * 118.1 (CTAF) 0 257.8	GND CON 121.7 257.8	UNICOM 122.95
-----------------------	--	--	-------------------------------	-------------------------



ELEV 4861 **D** TDZE 4858

HIRL Rwy 11-29
MIRL Rwy 4-22
REIL Rwy 4, 22 and 29



CATEGORY	A	B	C	D
LNAV MDA	5340-1	482 (500-1)	5340-1¼ 482 (500-1¼)	5340-1½ 482 (500-1½)
CIRCLING	5400-1 539 (600-1)	5520-1 659 (700-1)	5620-2¼ 759 (800-2¼)	5620-2½ 759 (800-2½)

SW-1, 22 FEB 2024 to 21 MAR 2024

SW-1, 22 FEB 2024 to 21 MAR 2024

APP CRS 112°	Rwy Idg TDZE Apt Elev	10503 4836 4861
------------------------	-----------------------------	--

RNAV (RNP) Z RWY 11

GRAND JUNCTION RGNL (GJT)

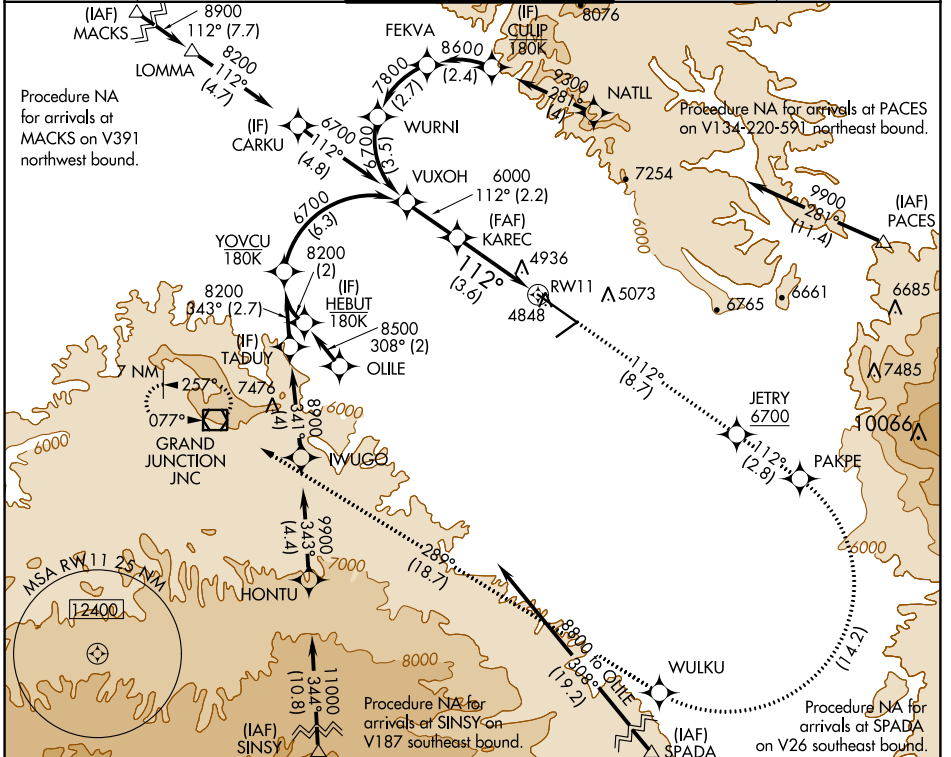
RNP AR APCH - GPS

For uncompensated Baro-VNAV systems, procedure NA below -21°C or above 54°C. For inoperative ALS, increase RNP 0.10 all Cats visibility to 1½ SM, and RNP 0.30 all Cats visibility to 1¾ SM.

MALSR

MISSED APPROACH: Climb to 9000 on track 112° to JETRY, cross JETRY at or above 6700, and on track 112° to PAKPE, right turn to WULKU, and on track 289° to JNC VOR/DME and hold.

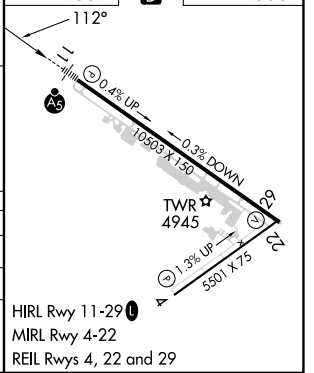
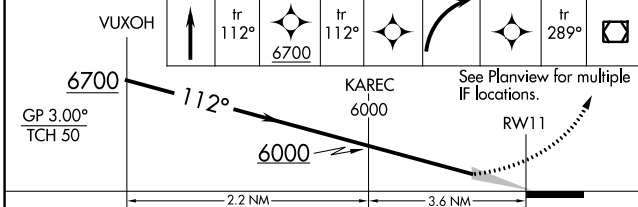
ATIS 118.55	DENVER APP CON * 119.7 317.4	GRAND JUNCTION TOWER * 118.1 (CTAF) 257.8	GND CON 121.7 257.8	UNICOM 122.95
------------------------------	---	--	--------------------------------------	--------------------------------



SW-1, 22 FEB 2024 to 21 MAR 2024

SW-1, 22 FEB 2024 to 21 MAR 2024

VUXOH	9000	JETRY	6700	PAKPE	WULKU	JNC	ELEV 4861	TDZE 4836
-------	------	-------	------	-------	-------	-----	-----------	-----------



CATEGORY	A	B	C	D
RNP 0.10 DA		5257-1¼	421 (400-1¼)	
RNP 0.30 DA		5369-1½	533 (600-1½)	

AUTHORIZATION REQUIRED

HIRL Rwy 11-29
MIRL Rwy 4-22
REIL Rws 4, 22 and 29

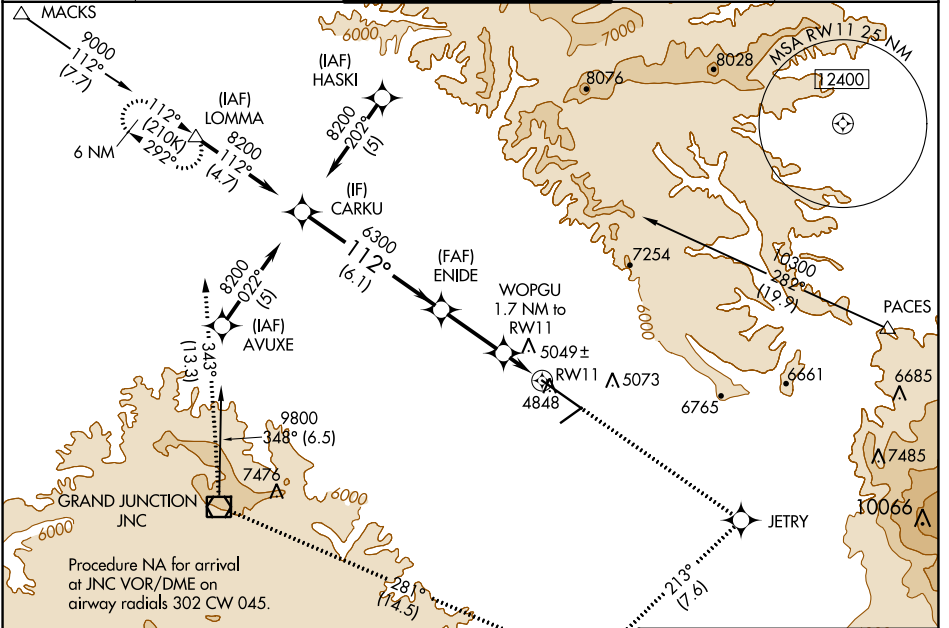
WAAS CH 97514 W11A	APP CRS 112°	Rwy Idg TDZE Apt Elev	10503 4833 4861
--	------------------------	-----------------------------	--

RNAV (GPS) Y RWY 11

GRAND JUNCTION RGNL (GJT)

RNP APCH - GPS.	MALSRL	MISSED APPROACH: Climb to 6700 direct JETRY then climbing right turn to 9000 on track 213° to AYEDY and on track 281° to JNC VOR/DME and on track 343° to LOMMA and hold.
<p>▼ For uncompensated Baro-VNAV systems, LNAV/VNAV NA below -24°C or above 39°C. Circling NA for Cat D north of Rwy 11-29.</p> <p>▲ #RVR 1800 authorized with use of FD or AP or HUD to DA.</p>		

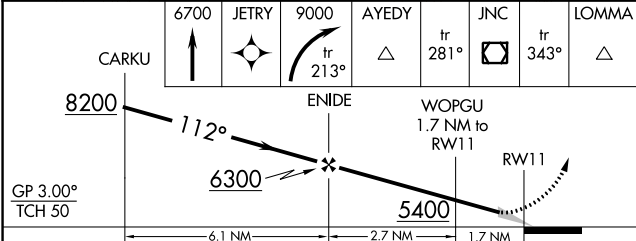
ATIS 118.55	DENVER APP CON * 119.7 317.4	GRAND JUNCTION TOWER * 118.1 (CTAF) 257.8	GND CON 121.7 257.8	UNICOM 122.95
-----------------------	--	---	-------------------------------	-------------------------



SW-1, 22 FEB 2024 to 21 MAR 2024

SW-1, 22 FEB 2024 to 21 MAR 2024

ELEV 4861	D	TDZE 4833
-----------	---	-----------



CATEGORY	A	B	C	D
LPV DA#	5033/24 200 (200-½)			
LNAV/VNAV DA	5492-1¾ 659 (700-1¾)			
LNAV MDA	5300/24 467 (500-½)	5300/50 467 (500-1)		
CIRCLING	5380-1 519 (600-1)	5520-1 659 (700-1)	5620-2¼ 759 (800-2¼)	5620-2½ 759 (800-2½)

