

(BNYRD6.BNYRD) 18144

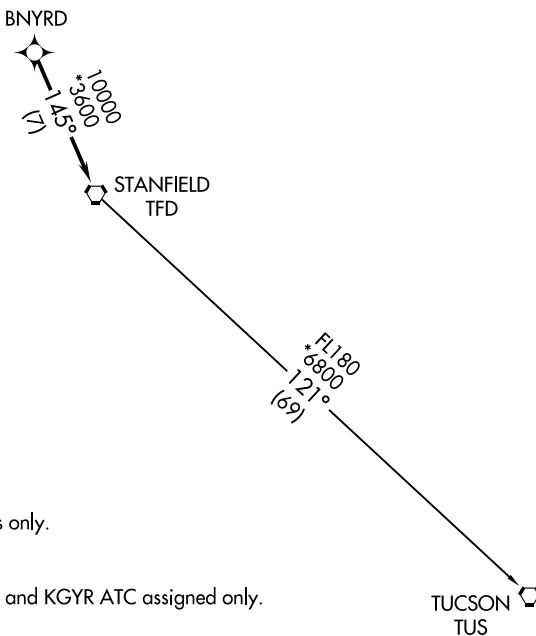
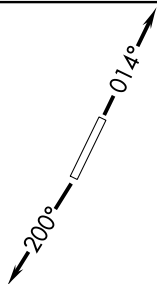
BNYRD SIX DEPARTURE (RNAV)

AL-6915 (FAA)

GLENDALE MUNI (G^ET^U)
GLENDALE, ARIZONA

**TOP ALTITUDE:
ASSIGNED BY ATC**

ATIS
119.425
GND CON
118.0
GLENDALE TOWER ★
121.0
LUKE DEP CON ★
118.15 363.125
PHOENIX DEP CON
120.7 239.0



TAKEOFF MINIMUMS

Rwys 1, 19: Standard.

- NOTE: RNAV 1.
- NOTE: Turbojets and turboprops only.
- NOTE: RADAR required.
- NOTE: GPS required.
- NOTE: Aircraft departing KGEU and KGYR ATC assigned only.

NOTE: Chart not to scale.



DEPARTURE ROUTE DESCRIPTION

TAKEOFF RUNWAY 1: Climb heading 014° or as assigned by ATC, thence. . . .

TAKEOFF RUNWAY 19: Climb heading 200° or as assigned by ATC, thence. . . .

. . . expect RADAR vectors to BNYRD, then on track 145° to TFD VORTAC, then on (transition), maintain ATC assigned altitude, expect filed altitude 3 minutes after departure.

TUCSON TRANSITION (BNYRD6.TUS)

BNYRD SIX DEPARTURE (RNAV)

(BNYRD6.BNYRD) 24MAY18

GLENDALE, ARIZONA
GLENDALE MUNI (G^ET^U)

SW-4, 22 FEB 2024 to 21 MAR 2024

SW-4, 22 FEB 2024 to 21 MAR 2024

FTHLS SIX DEPARTURE (RNAV)
(FTHLS6.FTHLS) 24MAY18

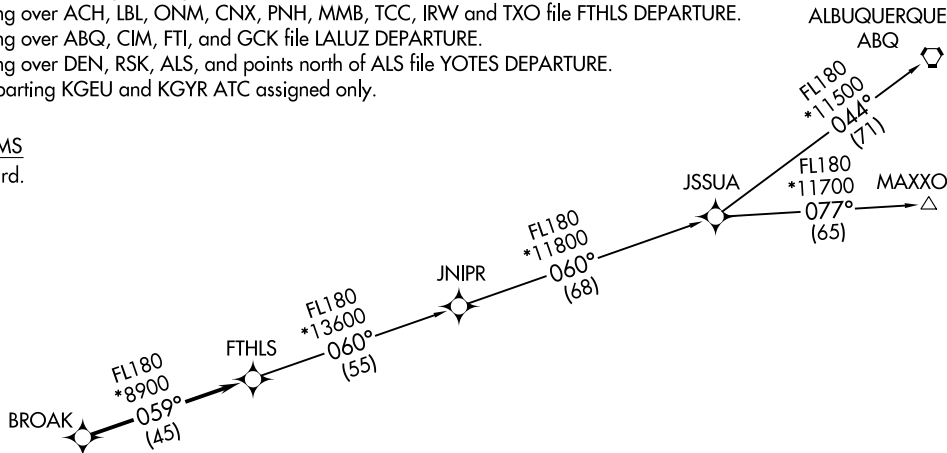
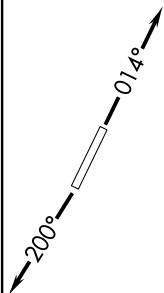
ATIS
119.425
GND CON
118.0
GLENDALE TOWER ★
121.0
LUKE DEP CON ★
118.15 363.125
PHOENIX DEP CON
120.7 239.0

NOTE: RNAV 1.
NOTE: Turbojets and turboprops only.
NOTE: RADAR required.
NOTE: GPS required.
NOTE: ABQ transition ATC assigned only.
NOTE: Aircraft filing over ACH, LBL, ONM, CNX, PNH, MMB, TCC, IRW and TXO file FTHLS DEPARTURE.
NOTE: Aircraft filing over ABQ, CIM, FTI, and GCK file LALUZ DEPARTURE.
NOTE: Aircraft filing over DEN, RSK, ALS, and points north of ALS file YOTES DEPARTURE.
NOTE: Aircraft departing KGEU and KGYR ATC assigned only.

TAKEOFF MINIMUMS

Rwys 1, 19: Standard.

**TOP ALTITUDE:
ASSIGNED BY ATC**



DEPARTURE ROUTE DESCRIPTION

TAKEOFF RUNWAY 1: Climb heading 014° or as assigned by ATC, thence. . . .
TAKEOFF RUNWAY 19: Climb heading 200° or as assigned by ATC, thence. . . .

. . . .expect RADAR vectors to BROAK, then on track 059° to FTHLS, then on (transition).
Maintain ATC assigned altitude, expect filed altitude 3 minutes after departure.

ALBUQUERQUE TRANSITION (FTHLS6.ABQ)

JNIPR TRANSITION (FTHLS6.JNIPR)

MAXXO TRANSITION (FTHLS6.MAXXO)

NOTE: Chart not to scale.

GLENDALE ARIZONA
GLENDALE MUNI (GET)

(FTHLS6.FTHLS) 18144
FTHLS SIX DEPARTURE (RNAV)

AL-6915 (FAA)

GLENDALE MUNI (GET)
GLENDALE ARIZONA

ATIS
119.425
GLENDALE TOWER ★
121.0
LUKE DEP CON ★
118.15 363.125
PHOENIX DEP CON
120.7 239.0

WINSLOW
112.6 INW
Chan 73

FLAGSTAFF
113.85 FLG
Chan 85(Y)

DRAKE
114.1 DRK
Chan 88

ST JOHNS
112.3 SJN
Chan 70

NOTE: RADAR required



TAKEOFF MINIMUMS:

Rwy 1: Standard with minimum climb of 230'/NM to 3600.
Rwy 19: Standard.

TAKEOFF OBSTACLE NOTES

Rwy 1: Light on blast fence 4' from DER, 130' left of centerline, up to 10' AGL/1088' MSL.
Trees beginning 124' from DER, left and right of centerline, up to 30' AGL/1104' MSL.
Vehicles beginning 299' from DER, 80' right of centerline, up to 15' AGL/1091' MSL.
Poles and trees beginning 400' from DER, 197' right of centerline, up to 75' AGL/1144' MSL.
Rwy 19: Trees beginning 281' from DER, 331' left of centerline, up to 33' AGL/1060' MSL.

DEPARTURE ROUTE DESCRIPTION

TAKEOFF RUNWAY 1: Climb to assigned altitude on assigned heading between 340° CW to 040° from DER. Thence. . .

TAKEOFF RUNWAY 19: Climbing right turn to assigned altitude on assigned heading between 200° CW to 220° from DER. Thence. . .

. . . Expect radar vectors to assigned route. Expect filed altitude 3 minutes after departure.

LOST COMMUNICATIONS: If no transmissions are received within one minute after departure, climb to 6000 then proceed direct BXK VORTAC, then via assigned route.



BUCKEYE
110.6 BXK
Chan 43

PHOENIX
115.6 PXR
Chan 103

GILA BEND
116.6 GBN
Chan 113

STANFIELD
114.8 TFD
Chan 95

NOTE: Chart not to scale.

IZZZO08, IZZZO) 25ANZ4

IZZZO EIGHT DEPARTURE (RNAV)

LUKE DEP CON*
118.15 363.125
PHOENIX DEP CON
120.7 239.0
ATIS
119.425
GND CON
118.0
GLENDALE TOWER*
121.0

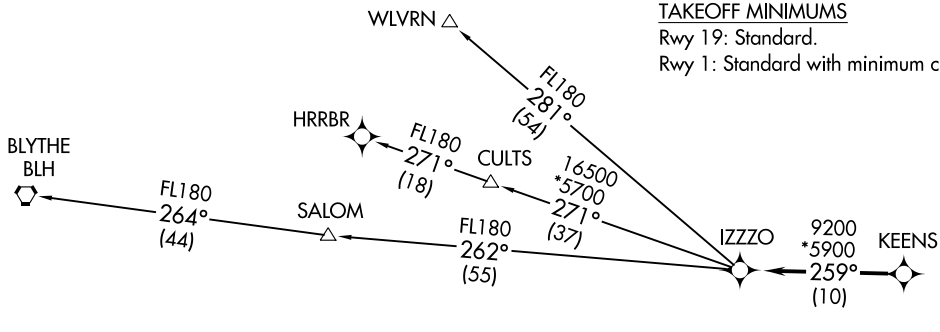
**TOP ALTITUDE:
ASSIGNED BY ATC**

RNAV 1 - GPS.
RADAR required.

- NOTE: Turbojets and turboprops only.
- NOTE: Aircraft requesting FL220 and below must file BLYTHE Transition.
- NOTE: Turbojets landing LAX, file WLVRN Transition.
- NOTE: Aircraft landing other than LAX and turboprops landing at LAX: Requesting FL240 and above, file HRRBR Transition.
- NOTE: Aircraft departing KGEU and KGYR ATC assigned only.

TAKEOFF MINIMUMS

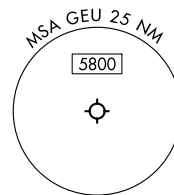
- Rwy 19: Standard.
- Rwy 1: Standard with minimum climb of 285'/NM to 5700.



DEPARTURE ROUTE DESCRIPTION

TAKEOFF RUNWAY 1: Climb on heading 014° or as assigned by ATC, thence. . . .
TAKEOFF RUNWAY 19: Climb on heading 200° or as assigned by ATC, thence. . . .
 . . . for RADAR vectors to KEENS, then on track 259° to IZZZO, then on (transition).
 Maintain ATC assigned altitude, expect filed altitude 3 minutes after departure.

- BLYTHE TRANSITION (IZZZO8.BLH)
- HRRBR TRANSITION (IZZZO8.HRRBR)
- WLVRN TRANSITION (IZZZO8.WLVRN)



NOTE: Chart not to scale.

GLENDALE, ARIZONA
GLENDALE MUNI (GEU)

IZZZO08, IZZZO) 24025

IZZZO EIGHT DEPARTURE (RNAV)

AL-6915 (FAA)

GLENDALE MUNI (GEU)
GLENDALE, ARIZONA

JUDTH SEVEN DEPARTURE (RNAV)
(JUDTH7 JUDTH) 24MAY18

GLENDALÉ, ARIZONA
GLENDALÉ MUNI (GETJ)

ATIS
119.425
GND CON
118.0
GLENDALÉ TOWER ★
121.0
LUKE DEP CON ★
118.15 363.125
PHOENIX DEP CON
120.7 239.0



DEPARTURE ROUTE DESCRIPTION

TAKEOFF RUNWAY 1: Climb heading 014° or as assigned by ATC, thence. . .

TAKEOFF RUNWAY 19: Climb heading 200° or as assigned by ATC, thence. . .

. . . expect RADAR vectors to GBN VORTAC, then on track 249° to JUDTH, then on (transition). Maintain ATC assigned altitude, expect filed altitude 3 minutes after departure.

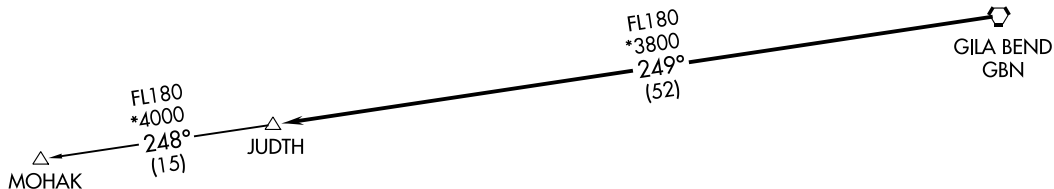
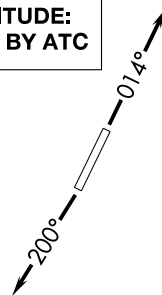
MOHAK TRANSITION (JUDTH7.MOHAK)

- NOTE: RNAV 1.
- NOTE: Turbojets and turboprops only.
- NOTE: RADAR required.
- NOTE: GPS required.
- NOTE: Aircraft departing KGEU and KGYR ATC assigned only.

TAKEOFF MINIMUMS

Rwys 1, 19: Standard.

**TOP ALTITUDE:
ASSIGNED BY ATC**



NOTE: Chart not to scale.

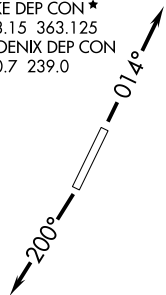
(JUDTH7 JUDTH) 181.44
JUDTH SEVEN DEPARTURE (RNAV)

AL-691.5 (FAA)

GLENDALÉ MUNI (GETJ)
GLENDALÉ, ARIZONA

KATMN SIX DEPARTURE (RNAV)
(KATMN6.KATMN) 24MAY18

ATIS
119.425
GND CON
118.0
GLENDALE TOWER ★
121.0
LUKE DEP CON ★
118.15 363.125
PHOENIX DEP CON
120.7 239.0



**TOP ALTITUDE:
ASSIGNED BY ATC**



DEPARTURE ROUTE DESCRIPTION

TAKEOFF RUNWAY 1: Climb heading 014° or as assigned by ATC, thence. . . .

TAKEOFF RUNWAY 19: Climb heading 200° or as assigned by ATC, thence. . . .

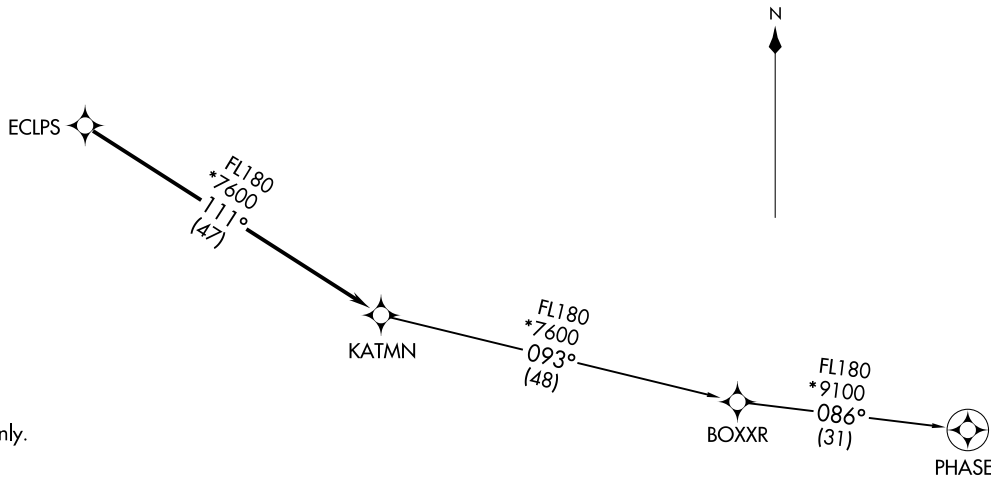
. . . .on RADAR vectors to ECLPS, then on track 111° to KATMN, then on (transition). Maintain ATC assigned altitude, expect filed altitude 3 minutes after departure.

PHASE TRANSITION (KATMN6.PHASE)

(KATMN6.KATMN) 18144
KATMN SIX DEPARTURE (RNAV)

AL-6915 (FAA)

GLENDALE MUNI (GETJ)
GLENDALE, ARIZONA



TAKEOFF MINIMUMS

Rwys 1, 19: Standard.

NOTE: RNAV 1.

NOTE: Turbojets and turboprops only.

NOTE: RADAR required.

NOTE: GPS required.

NOTE: Aircraft departing KGEU and KGYR ATC assigned only.

NOTE: Chart not to scale.

GLENDALE, ARIZONA
GLENDALE MUNI (GETJ)

LALUZ SIX DEPARTURE (RNAV)
 (LALUZ6.LALUZ) 24MAY18

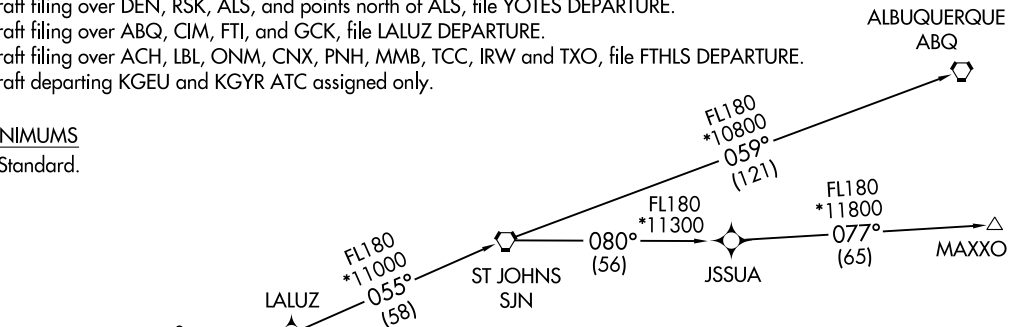
ATIS
 119.425
 GND CON
 118.0
 GLENDALE TOWER ★
 121.0
 LUKE DEP CON ★
 118.15 363.125
 PHOENIX DEP CON
 120.7 239.0

NOTE: RNAV 1.
 NOTE: Turbojets and turboprops only.
 NOTE: RADAR required.
 NOTE: GPS required.
 NOTE: SJN TRANSITION for ABQ terminal arrivals only.
 NOTE: MAXXO TRANSITION ATC assigned only.
 NOTE: Aircraft filing over DEN, RSK, ALS, and points north of ALS, file YOTES DEPARTURE.
 NOTE: Aircraft filing over ABQ, CIM, FTI, and GCK, file LALUZ DEPARTURE.
 NOTE: Aircraft filing over ACH, LBL, ONM, CNX, PNH, MMB, TCC, IRW and TXO, file FTHLS DEPARTURE.
 NOTE: Aircraft departing KGEU and KGYR ATC assigned only.

**TOP ALTITUDE:
 ASSIGNED BY ATC**

TAKEOFF MINIMUMS

Rwys 1, 19: Standard.



DEPARTURE ROUTE DESCRIPTION

TAKEOFF RUNWAY 1: Climb heading 014° or as assigned by ATC, thence. . . .

TAKEOFF RUNWAY 19: Climb heading 200° or as assigned by ATC, thence. . . .

. . . .expect RADAR vectors to FORPE, then on track 055° to LALUZ, then on (transition). Maintain ATC assigned altitude, expect filed altitude 3 minutes after departure.

ALBUQUERQUE TRANSITION (LALUZ6.ABQ)

MAXXO TRANSITION (LALUZ6.MAXXO)

ST JOHNS TRANSITION (LALUZ6.SJN)

NOTE: Chart not to scale.

GLENDALE ARIZONA
 GLENDALE MUNI (GET)

LALUZ SIX DEPARTURE (RNAV)
 (LALUZ6.LALUZ) 18144

AL-6915 (FAA)

GLENDALE MUNI (GET)
 GLENDALE ARIZONA

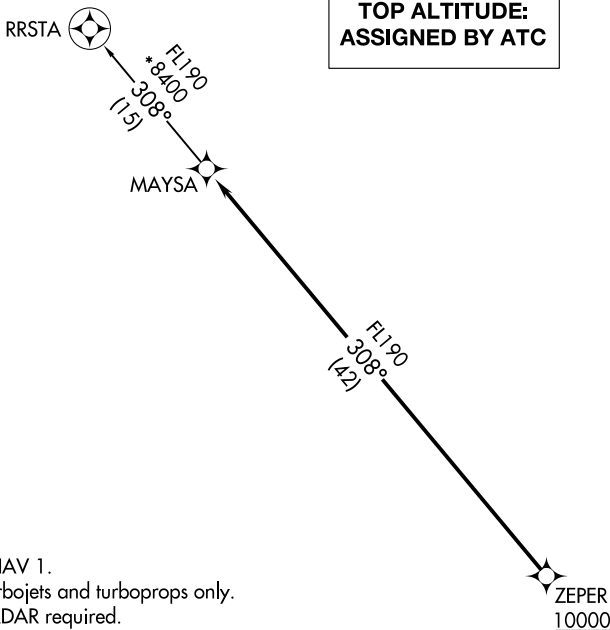
(MAYSA7.MAYSA) 20142

MAYSA SEVEN DEPARTURE (RNAV) AL-6915 (FAA)

GLENDALE MUNI (G^ETU)
GLENDALE, ARIZONA

**TOP ALTITUDE:
ASSIGNED BY ATC**

ATIS	119.425
GND CON	118.0
GLENDALE TOWER*	121.0
LUKE DEP CON*	118.15 363.125
PHOENIX DEP CON	120.7 239.0



- NOTE: RNAV 1.
- NOTE: Turbojets and turboprops only.
- NOTE: RADAR required.
- NOTE: GPS required.
- NOTE: Aircraft departing KGEU and KGYR ATC assigned only. Do not file.

TAKEOFF MINIMUMS

Rwys 1, 19: Standard.

NOTE: Chart not to scale.

DEPARTURE ROUTE DESCRIPTION

TAKEOFF RUNWAY 1: Climb on heading 014° or as assigned by ATC, thence. . .

TAKEOFF RUNWAY 19: Climb on heading 200° or as assigned by ATC, thence. . .

. . . expect RADAR vectors to cross ZEPER at or above 10000, then on track 308° to MAYSA, then on RRSTA TRANSITION. Maintain ATC assigned altitude, expect filed altitude 3 minutes after departure.

RRSTA TRANSITION (MAYSA7.RRSTA)

MAYSA SEVEN DEPARTURE (RNAV)

(MAYSA7.MAYSA) 21MAY20

GLENDALE, ARIZONA
GLENDALE MUNI (G^ETU)

SW-4, 22 FEB 2024 to 21 MAR 2024

SW-4, 22 FEB 2024 to 21 MAR 2024

SNOBL SIX DEPARTURE (RNAV)

AL-6915 (FAA)

GLENDALE MUNI (G^ET^U)

GLENDALE, ARIZONA

**TOP ALTITUDE:
ASSIGNED BY ATC**

ATIS 119.425
 GND CON 118.0
 GLENDALE TOWER* 121.0
 LUKE DEP CON* 118.15 363.125
 PHOENIX DEP CON 120.7 239.0

GRAND CANYON GCN

*9500
 FL180
 342°
 (26)

RIMMM

*11500
 FL180
 343°
 (110)

LOFTS

*11500
 FL180
 343°
 (36)

CARTL

*9300
 FL180
 343°
 (20)

SNOBL

*8100
 14600
 343°
 (20)

QUAKY

YOOPR

JARPA

*10700
 FL180
 043°
 (94)

*10700
 FL180
 050°
 (123)

TAKEOFF MINIMUMS
 Rws 1, 19: Standard.

- NOTE: RNAV 1.
- NOTE: Turbojets and turboprops only.
- NOTE: RADAR required.
- NOTE: GPS required.
- NOTE: JARPA TRANSITION ATC assigned only.
- NOTE: YOOPR TRANSITION ATC assigned only.
- NOTE: CARTL TRANSITION for FLG or PGA terminal arrivals only.
- NOTE: Aircraft departing KGEU and KGYR ATC assigned only.

DEPARTURE ROUTE DESCRIPTION

TAKEOFF RUNWAY 1: Climb heading 014° or as assigned by ATC, then...

TAKEOFF RUNWAY 19: Climb heading 200° or as assigned by ATC, then...

...expect RADAR vectors to QUAKY, then on track 343° to SNOBL, then on (transition). Maintain ATC assigned altitude, expect filed altitude 3 minutes after departure.

CARTL TRANSITION (SNOBL6.CARTL)

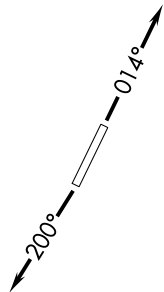
GRAND CANYON TRANSITION (SNOBL6.GCN)

JARPA TRANSITION (SNOBL6.JARPA)

RIMMM TRANSITION (SNOBL6.RIMMM)

YOOPR TRANSITION (SNOBL6.YOOPR)

NOTE: Chart not to scale.



SW-4, 22 FEB 2024 to 21 MAR 2024

SW-4, 22 FEB 2024 to 21 MAR 2024

SNOBL SIX DEPARTURE (RNAV)

(SNOBL6.SNOBL) 24MAY18

GLENDALE, ARIZONA
GLENDALE MUNI (G^ET^U)

(YOTES6.YOTES) 18144

YOTES SIX DEPARTURE (RNAV)

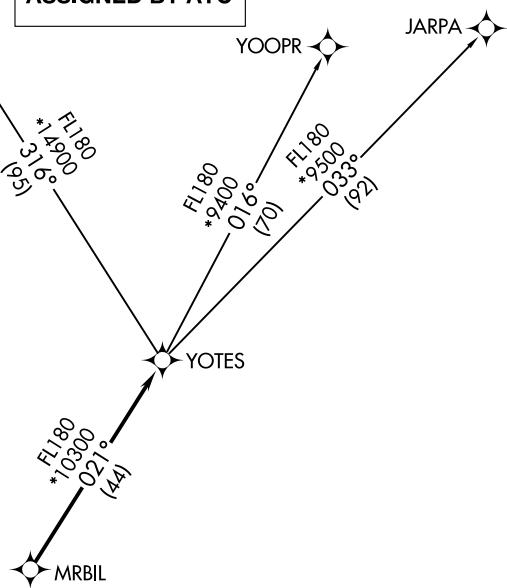
AL-6915 (FAA)

GLENDALE MUNI (G^ETU)
GLENDALE, ARIZONA

ATIS
119.425
GND CON
118.0
GLENDALE TOWER *
121.0
LUKE DEP CON *
118.15 363.125
PHOENIX DEP CON
120.7 239.0

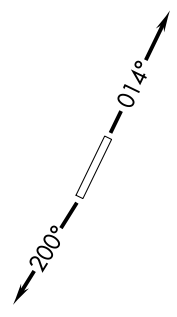
GRAND CANYON GCN

**TOP ALTITUDE:
ASSIGNED BY ATC**



SW-4, 22 FEB 2024 to 21 MAR 2024

SW-4, 22 FEB 2024 to 21 MAR 2024



- NOTE: RNAV 1.
- NOTE: Turbojets and turboprops only.
- NOTE: RADAR required.
- NOTE: GPS required.
- NOTE: GCN TRANSITION ATC assigned only.
- NOTE: Aircraft departing KGEU and KGYR ATC assigned only.

TAKEOFF MINIMUMS
Rwys 1, 19: Standard.

NOTE: Chart not to scale.



DEPARTURE ROUTE DESCRIPTION

TAKEOFF RUNWAY 1: Climb heading 014° or as assigned by ATC, thence. . .

TAKEOFF RUNWAY 19: Climb heading 200° or as assigned by ATC, thence. . .

. . . expect RADAR vectors to MRBIL, then on track 021° to YOTES, then on (transition).
Maintain ATC assigned altitude, expect filed altitude 3 minutes after departure.

GRAND CANYON TRANSITION (YOTES6.GCN)

JARPA TRANSITION (YOTES6.JARPA)

YOOPR TRANSITION (YOTES6.YOOPR)

YOTES SIX DEPARTURE (RNAV)

(YOTES6.YOTES) 24MAY18

GLENDALE, ARIZONA
GLENDALE MUNI (G^ETU)