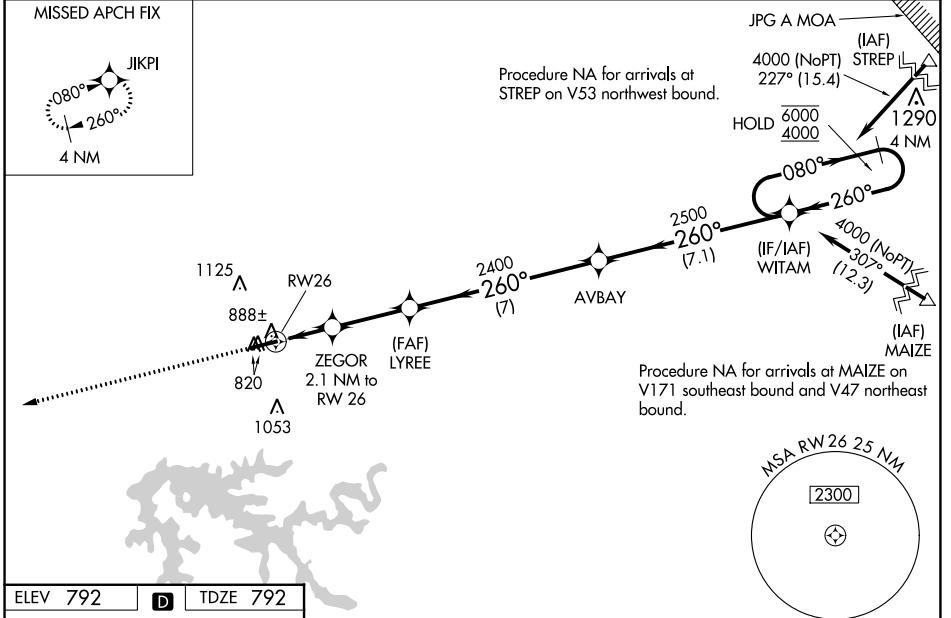


WAAS CH 78420 W26A	APP CRS 260°	Rwy Idg 5298 TDZE 792 Apt Elev 792
--	------------------------	---

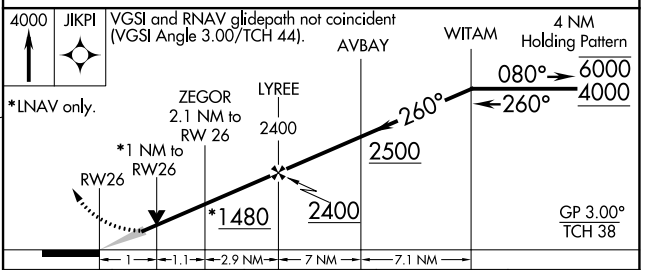
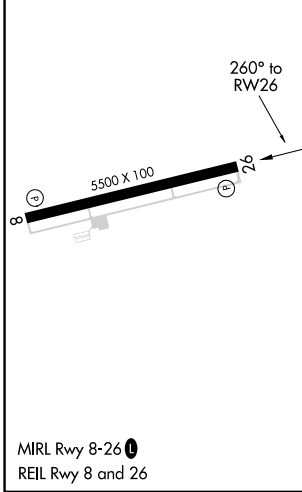
RNAV (GPS) RWY 26

FRENCH LICK MUNI (F.R.H)

RNP APCH. <p>For uncompensated Baro-VNAV systems, LNAV/VNAV NA below -16°C or above 39°C.</p>		MISSED APPROACH: Climb to 4000 direct JIKPI and hold.
AWOS-3 118.075	LOUISVILLE APP CON 132.075 327.0	UNICOM 122.8 (CTAF) 0



ELEV 792		TDZE 792
----------	--	----------



CATEGORY	A	B	C	D
LPV DA		1042-1	250 (300-1)	
LNAV/VNAV DA		1077-1	285 (300-1)	
LNAV MDA		1140-1	348 (400-1)	
CIRCLING	1280-1	488 (500-1)	1480-2 688 (700-2)	1480-2¼ 688 (700-2¼)

EC-2, 22 FEB 2024 to 21 MAR 2024

EC-2, 22 FEB 2024 to 21 MAR 2024

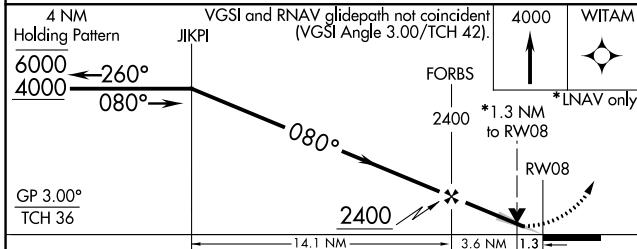
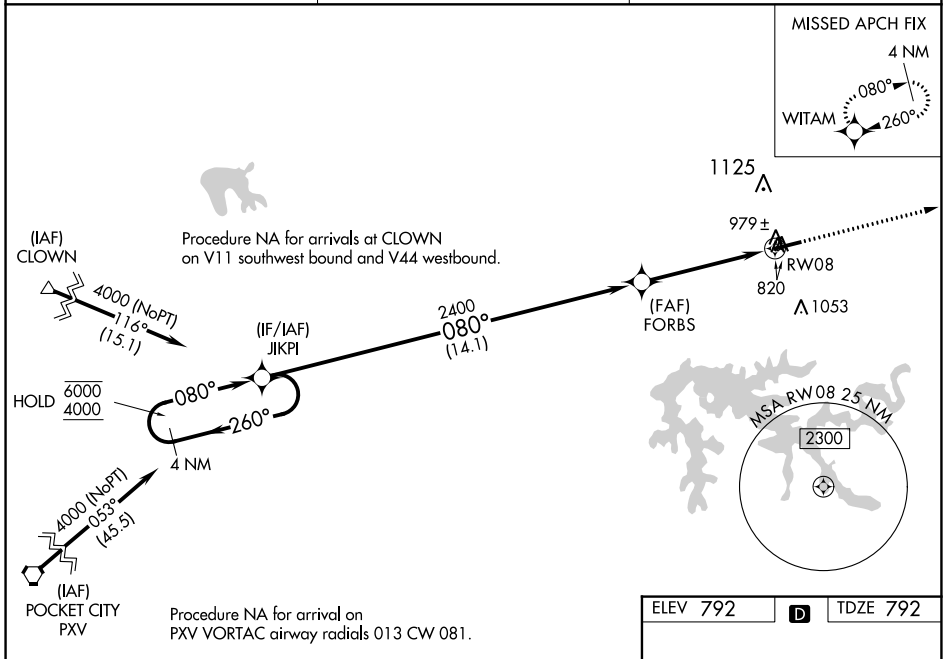
WAAS CH 61320 W08A	APP CRS 080°	Rwy Idg 5309 TDZE 792 Apt Elev 792
--	------------------------	---

RNAV (GPS) RWY 8

FRENCH LICK MUNI (F.R.H)

RNP APCH.	MISSED APPROACH: Climb to 4000 direct WITAM and hold.
-----------	---

AWOS-3 118.075	LOUISVILLE APP CON 132.075 327.0	UNICOM 122.8 (CTAF)
--------------------------	--	-------------------------------



CATEGORY	A	B	C	D
LPV DA		1057-7/8	265 (300-7/8)	
LNNAV/VNAV DA		1162-1 1/4	370 (400-1 1/4)	
LNNAV MDA	1240-1	448 (500-1)	1240-1 3/8	448 (500-1 3/8)
CIRCLING	1280-1	488 (500-1)	1480-2 688 (700-2)	1480-2 1/4 688 (700-2 1/4)

ELEV 792 **D** TDZE 792

5500 X 100

080° to RW08

MIRL Rwy 8-26
REIL Rwy 8 and 26

EC-2, 22 FEB 2024 to 21 MAR 2024

EC-2, 22 FEB 2024 to 21 MAR 2024