



WAAS CH <b>40021</b> W01A	APP CRS <b>009°</b>	Rwy Idg TDZE <b>1059</b> Apt Elev <b>1077</b>	<b>5000</b> <b>1059</b> <b>1077</b>
---------------------------------	------------------------	---	---

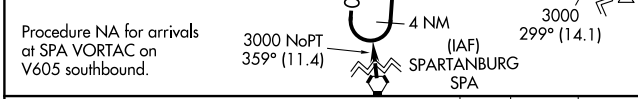
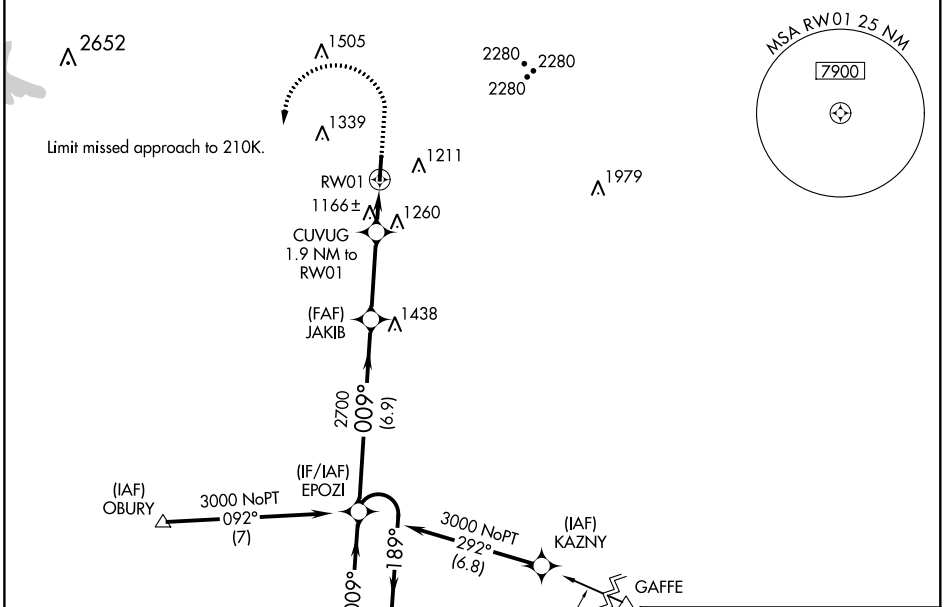
# RNAV (GPS) RWY 1

RUTHERFORD COUNTY-MARCHMAN FIELD (FQD)

**⚠** Baro-VNAV NA when using Shelby-Cleveland County Rgnl altimeter setting. For uncompensated Baro-VNAV systems, LNAV/VNAV NA below -17°C (2°F) or above 54°C (130°F). DME/DME RNP-0.3 NA. When local altimeter setting not received, use Shelby-Cleveland County Rgnl altimeter setting and increase all DA 77 feet, all MDA 80 feet, and increase LPV all Cats, LNAV/VNAV all Cats, LNAV Cats C/D and Circling Cats C/D visibility ¼ mile. VDP NA with Shelby-Cleveland County Rgnl altimeter setting.

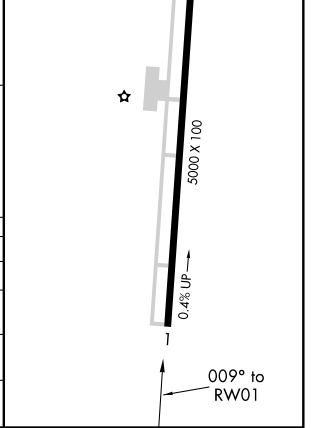
**MISSED APPROACH:** Climb to 1700 then climbing left turn to 3000 direct EPOZI and hold.

AWOS-3 <b>118.275</b>	GREER APP CON ★ <b>119.4 350.2</b>	UNICOM <b>122.8 (CTAF) 0</b>
--------------------------	---------------------------------------	---------------------------------



ELEV <b>1077</b>	TDZE <b>1059</b>
REIL Rwy 1 <b>0</b>	
MIRL Rwy 1-19 <b>0</b>	

CATEGORY	A	B	C	D
LPV DA		1309-7/8	250 (300-7/8)	
LNAV/VNAV DA		1459-13/8	400 (400-13/8)	
LNAV MDA		1420-1	361 (400-1)	
<b>C</b> CIRCLING	1560-1 483 (500-1)	1620-1 543 (600-1)	1640-1½ 563 (600-1½)	1820-2½ 743 (800-2½)



SE-2, 31 DEC 2020 to 28 JAN 2021

SE-2, 31 DEC 2020 to 28 JAN 2021

WAAS CH <b>82335</b> <b>W19A</b>	APP CRS <b>189°</b>	Rwy Idg TDZE Apt Elev	<b>5000</b> <b>1077</b> <b>1077</b>
--	------------------------	-----------------------------	---

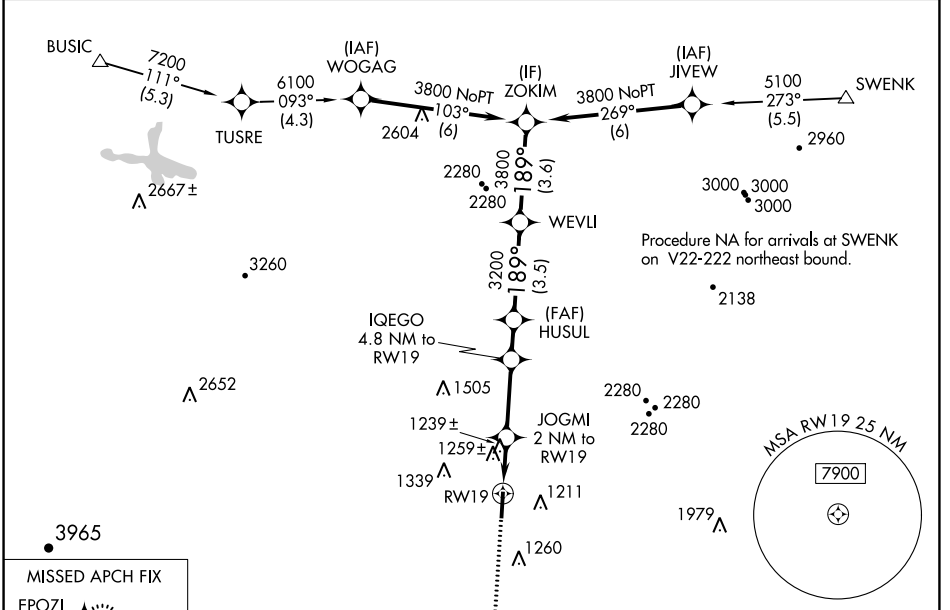
# RNAV (GPS) RWY 19

RUTHERFORD COUNTY-MARCHMAN FIELD (FQD)

**▼** DME/DME RNP-0.3 NA. When local altimeter setting not received, use Shelby-Cleveland County Rgnl altimeter setting and increase all MDA 80 feet and increase LP and LNAV Cat C and D ½ mile, increase Circling Cat C and D visibility ¼ mile. Rwy 19 helicopter visibility reduction below ¾ mile NA.

MISSED APPROACH:  
Climb to 3000 direct EPOZI and hold.

AWOS-3 <b>118.275</b>	GREER APP CON ★ <b>119.4 350.2</b>	UNICOM <b>122.8 (CTAF) 0</b>
--------------------------	---------------------------------------	---------------------------------



ELEV 1077	TDZE 1077
3000	EPOZI
*LNAV only	JOGMI 2 NM to RW19
*1 NM to RW19	IQEGO 4.8 NM to RW19
*1780	HUSUL
2720	WEVLI
3200	ZOKIM
3800	
1 NM	1 NM
2.8 NM	1.4 NM
3.5 NM	3.6 NM
3000	EPOZI
3800	189° to RW19
6L	5000 X 100
0.4% UP	

REIL Rwy 1 0	MIRL Rwy 1-19 0
--------------	-----------------

SE-2, 31 DEC 2020 to 28 JAN 2021

SE-2, 31 DEC 2020 to 28 JAN 2021