

(NELIE.NELIE3) 22307

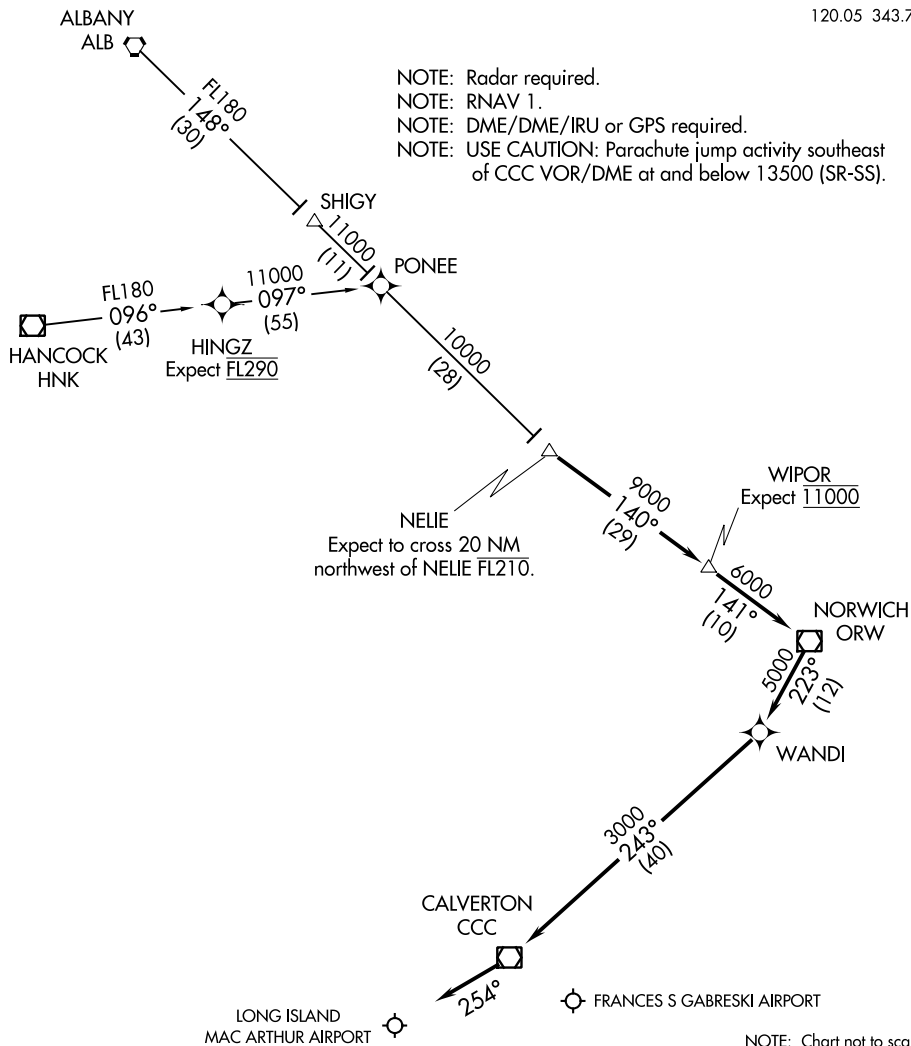
AL-948 (FAA)

NELIE THREE ARRIVAL (RNAV)

NEW YORK, NEW YORK

ATIS 120.725
NEW YORK APP CON
120.05 343.75

NOTE: Radar required.
NOTE: RNAV 1.
NOTE: DME/DME/IRU or GPS required.
NOTE: USE CAUTION: Parachute jump activity southeast of CCC VOR/DME at and below 13500 (SR-SS).



NE-2, 07 SEP 2023 to 05 OCT 2023

NE-2, 07 SEP 2023 to 05 OCT 2023

NOTE: Chart not to scale.

ARRIVAL ROUTE DESCRIPTION

- ALBANY TRANSITION (ALB.NELIE3):
- HANCOCK TRANSITION (HNK.NELIE3):
- HINGZ TRANSITION (HINGZ.NELIE3):

....From NELIE on track 140° to WIPOR, then on track 141° to ORW VOR/DME, then on track 223° track to WANDI, then on track 243° to CCC VOR/DME, then on heading 254° or as assigned by ATC. Expect vectors to final approach course.

NELIE THREE ARRIVAL (RNAV)

NEW YORK, NEW YORK

(NELIE.NELIE3) 13NOV14