

WAAS CH 69212 W25A	APP CRS 252°	Rwy Idg TDZE Apt Elev	4703 913 913
--	------------------------	-----------------------------	---

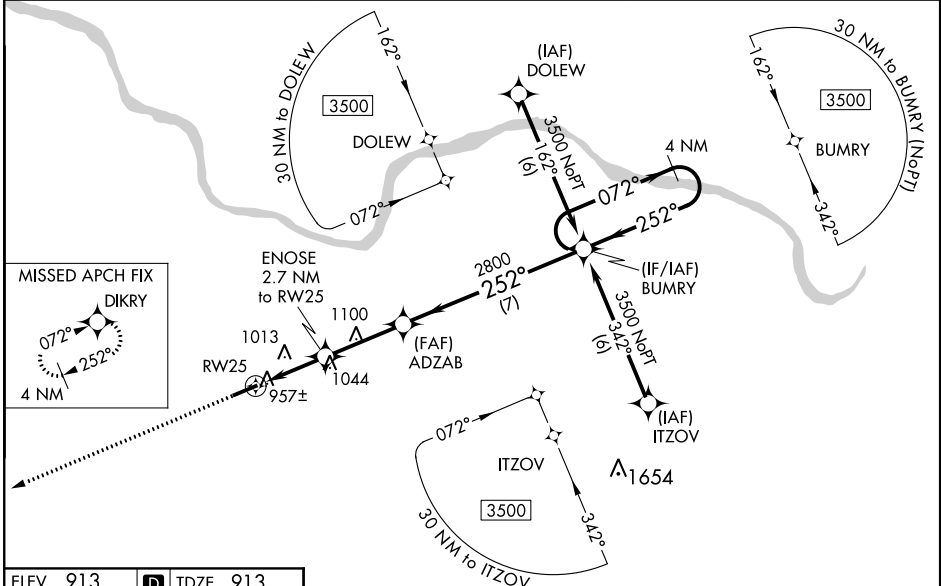
RNAV (GPS) RWY 25

FLEMING-MASON (F'GX)

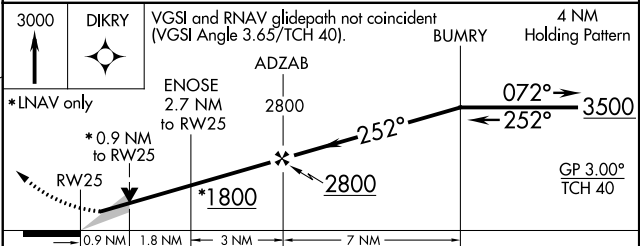
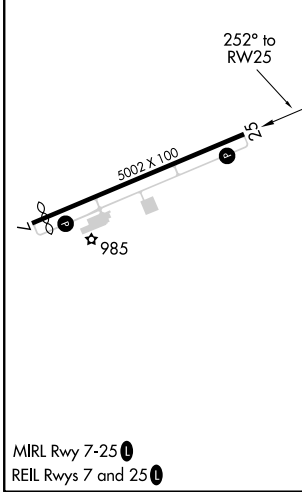
⚠ Baro-VNAV NA when using Lexington altimeter setting. For uncompensated Baro-VNAV systems, LNAV/VNAV NA below -16°C (4°F) or above 47°C (116°F). DME/DME RNP-0.3 NA. When local altimeter setting not received, use Lexington altimeter setting and increase LPV DA to 1290 feet, and all visibilities ¼ SM, LNAV/VNAV DA to 1344 feet and all visibilities ½ SM; increase all MDAs 140 feet and LNAV Cat C visibility ½ SM, Cat D ¼ SM and increase Circling Cat C and D visibility ½ SM.

MISSED APPROACH:
Climb to 3000 direct
DIKRY and hold.

AWOS-3 118.125	INDIANAPOLIS CENTER 124.225 360.725	UNICOM 123.0(CTAF)
--------------------------	---	------------------------------



ELEV 913	D	TDZE 913
----------	----------	----------



CATEGORY	A	B	C	D
LPV DA	1163-1		250 (300-1)	
LNAV/VNAV DA	1217-1		304 (400-1)	
LNAV MDA	1280-1		367 (400-1)	
			1280-1¼ 367 (400-1¼)	
CIRCLING	1360-1 447 (500-1)	1380-1 467 (500-1)	1520-1¾ 607 (700-1¾)	1520-2 607 (700-2)

SE-1, 02 DEC 2021 to 30 DEC 2021

SE-1, 02 DEC 2021 to 30 DEC 2021

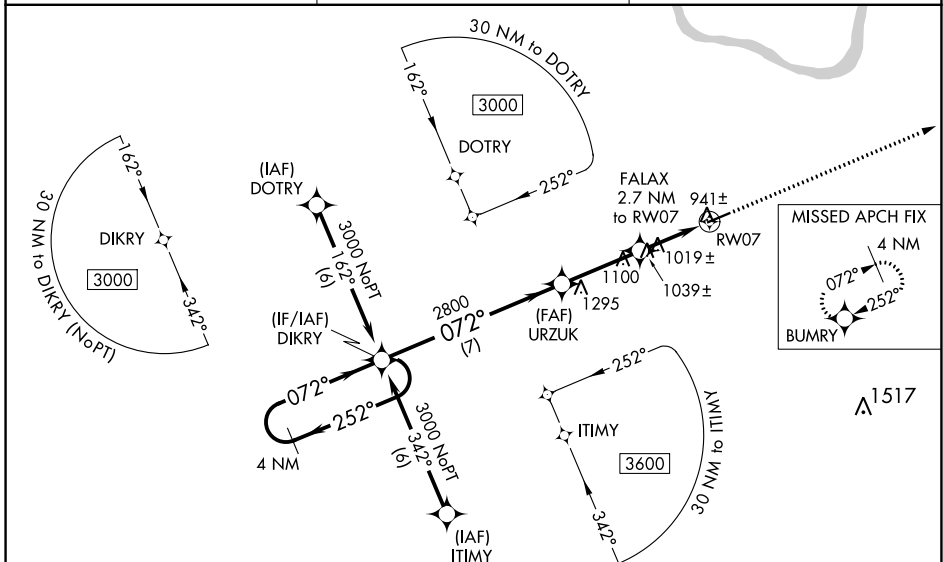
WAAS CH 56312 W07A	APP CRS 072°	Rwy Idg TDZE Apt Elev	4703 913 913
--	------------------------	-----------------------------	---

RNAV (GPS) RWY 7

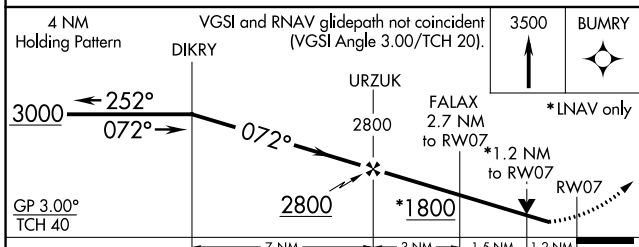
FLEMING-MASON (F'GX)

RNP APCH.	<p>Baro-VNAV NA when using Lexington altimeter setting. For uncompensated Baro-VNAV systems, LNAV/VNAV NA below -16°C or above 47°C. Rwy 7 helicopter visibility reduction below ¼ SM NA. When local altimeter setting not received, use Lexington altimeter setting: increase LPV DA to 1290 and all visibilities ¼ SM; increase LNAV/VNAV DA to 1383 feet and all visibilities ½ SM; increase all MDA 140 feet and LNAV Cat C visibility ¼ SM and Cat D ½ SM.</p>	MISSED APPROACH: Climb to 3500 direct BUMRY and hold.
-----------	---	---

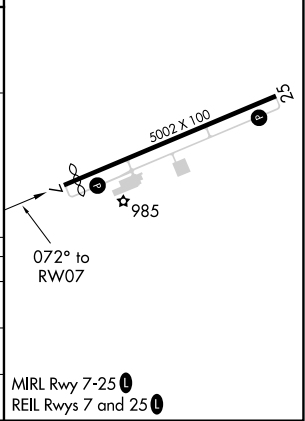
AWOS-3 118.125	INDIANAPOLIS CENTER 124.225 360.725	UNICOM 123.0(CTAF)
--------------------------	---	------------------------------



ELEV 913	TDZE 913
----------	----------



CATEGORY	A	B	C	D
LPV DA	1163-1		250 (300-1)	
LNAV/VNAV DA	1256-1¼		343 (400-1¼)	
LNAV MDA	1320-1 407 (500-1)		1320-1¼ 407 (500-1¼)	



SE-1, 02 DEC 2021 to 30 DEC 2021

SE-1, 02 DEC 2021 to 30 DEC 2021

VOR/DME FLM 117.0 Chan 117	APP CRS 107°	Rwy Idg TDZE Apt Elev N/A N/A 913
--	------------------------	---

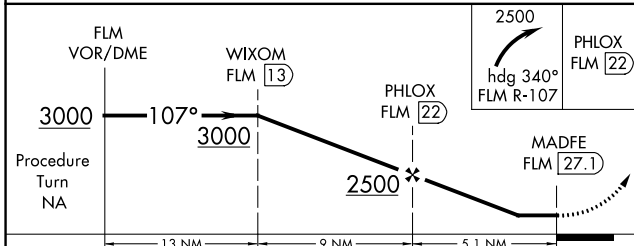
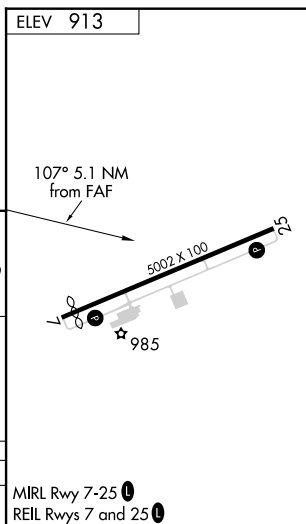
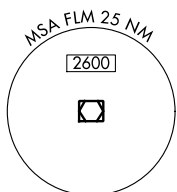
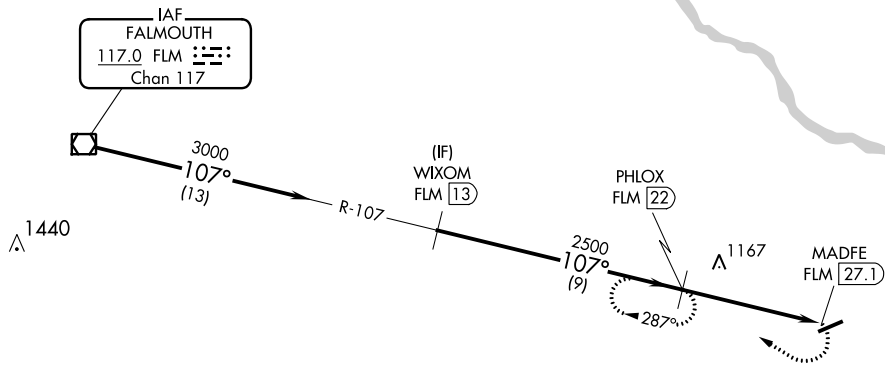
VOR/DME-A
FLEMING-MASON (F'GX)

NA When local altimeter setting not received, use Lexington altimeter setting and increase all MDA 140 feet.

MISSED APPROACH: Climbing right turn to 2500 via heading 340° and FLM VOR/DME R-107 to PHLOX/FLM 22 DME and hold.

AWOS-3 118.125	INDIANAPOLIS CENTER 124.225 360.725	UNICOM 123.0 (CTAF)
--------------------------	---	-------------------------------

Procedure NA for arrivals at FLM VOR/DME via airway radials 094 CW 150.



CATEGORY	A	B	C	D
CIRCLING	1900-1¼ 987 (1000-1¼)	1900-1½ 987 (1000-1½)	1900-3	987 (1000-3)

MIRL Rwy 7-25
REIL Rwys 7 and 25

SE-1, 02 DEC 2021 to 30 DEC 2021

SE-1, 02 DEC 2021 to 30 DEC 2021