

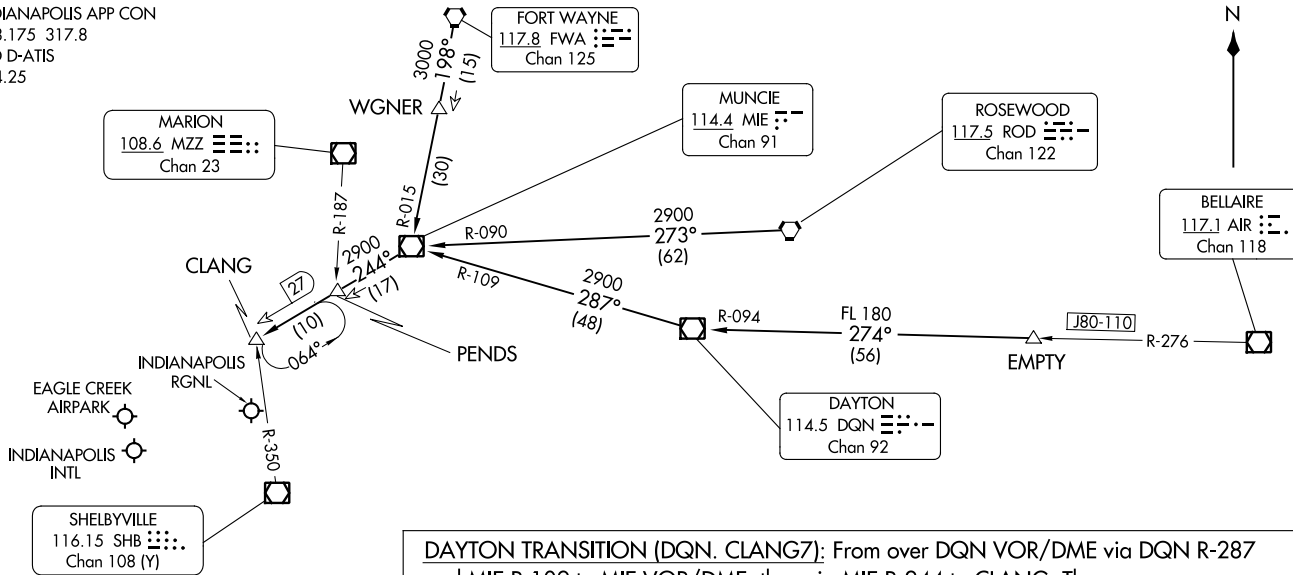
CLANG SEVEN ARRIVAL  
(CLANG, CLANG7) 27 APR 17

(CLANG, CLANG7) 23334  
CLANG SEVEN ARRIVAL

AL-203 (FAA)

INDIANAPOLIS, INDIANA

INDIANAPOLIS APP CON  
128.175 317.8  
IND D-ATIS  
134.25



**DAYTON TRANSITION (DQN, CLANG7):** From over DQN VOR/DME via DQN R-287 and MIE R-109 to MIE VOR/DME, then via MIE R-244 to CLANG. Thence....

**EMPTY TRANSITION (EMPTY, CLANG7):** From over EMPTY via DQN R-094 to DQN VOR/DME, then via DQN R-287 and MIE R-109 to MIE VOR/DME, then via MIE R-244 to CLANG. Thence....

**FORT WAYNE TRANSITION (FWA, CLANG7):** From over FWA VORTAC via FWA R-198 and MIE R-015 to MIE VOR/DME, then via MIE R-244 to CLANG. Thence....

**ROSEWOOD TRANSITION (ROD, CLANG7):** From over ROD VORTAC via ROD R-273 and MIE R-090 to MIE VOR/DME, then via MIE R-244 to CLANG. Thence....

....from over CLANG, expect vectors to final approach course.

LOST COMMUNICATIONS:  
LANDING IND: In the event of lost communication prior to runway assignment, execute the ILS Runway 23R approach.

NOTE: Radar required.

NOTE: Chart not to scale.

INDIANAPOLIS, INDIANA

# RACYR SIX ARRIVAL

INDIANAPOLIS, INDIANA

INDIANAPOLIS APP CON  
128.175 317.8  
IND D-ATIS  
134.25

BRICKYARD  
116.3 VHP  
Chan 110

INDIANAPOLIS  
EXEC

RADAR required.  
DME required.

INDIANAPOLIS  
METRO

EAGLE CREEK  
AIRPARK

INDIANAPOLIS  
RGNL

INDIANAPOLIS  
INTL

INDY SOUTH  
GREENWOOD

TERRE HAUTE  
115.3 TTH  
Chan 100

KELLY

SHELBYVILLE  
116.15 SHB  
Chan 108 (Y)

BIBLE GROVE  
109.0 BIB  
Chan 27

DRWUD

6000  
\*2200  
078°  
078°  
(15)

REEMO

43  
084°  
(30)  
45

RACYR

HOOSIER  
110.2 OOM  
Chan 39

6000  
\*2100  
027°  
027°  
(66)

POCKET CITY  
113.3 PXV  
Chan 80

NOTE: Chart not to scale.

## ARRIVAL ROUTE DESCRIPTION

**BIBLE GROVE TRANSITION (BIB.RACYR6):** From over BIB VORTAC on BIB R-078 and OOM R-264 to RACYR. Thence....

**POCKET CITY TRANSITION (PXV.RACYR6):** From over PXV VORTAC on PXV R-027 and VHP R-209 to RACYR. Thence....

....from over RACYR on VHP VORTAC R-209 to DRWUD, then on VHP VORTAC R-209 to KELLY, then on VHP VORTAC R-209 to VHP VORTAC. Expect radar vectors to final approach course.

**LOST COMMUNICATIONS:** Landing IND: In the event of lost communication prior to runway assignment, execute the ILS Runway 23R approach.

# RACYR SIX ARRIVAL

INDIANAPOLIS, INDIANA