

LOC I-EWN 110.5	APP CRS 039°	Rwy Idg TDZE Apt Elev	5753 17 18
---------------------------	------------------------	-----------------------------	---------------------------------------

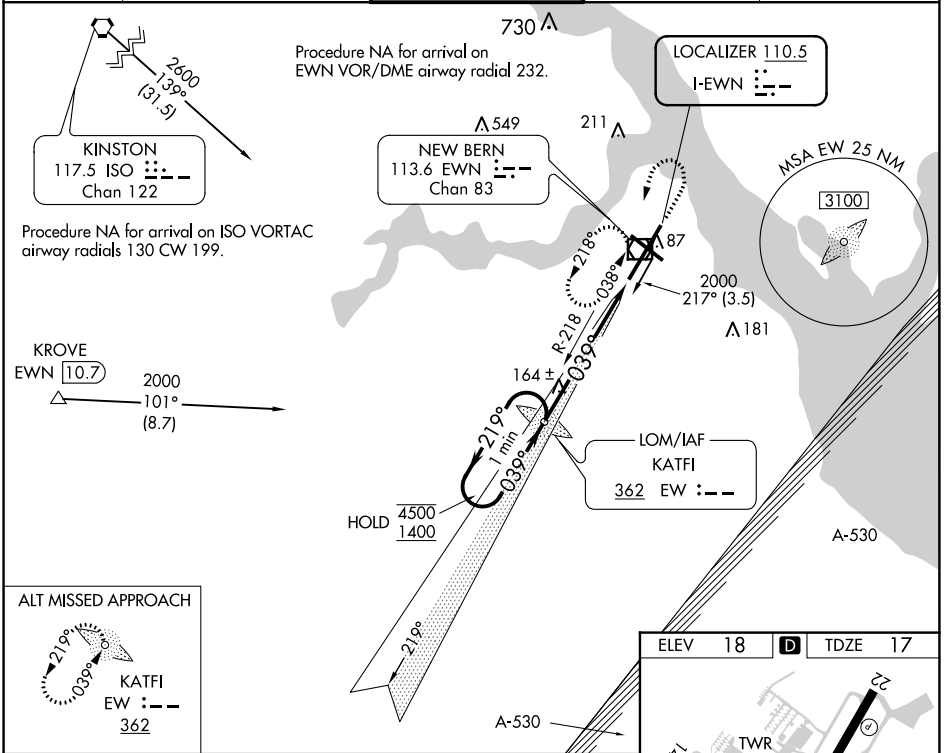
ILS or LOC RWY 4
COASTAL CAROLINA RGNL (EWN)

RADAR or ADF required for procedure entry. ADF required for LOC only.

▲ Circling Rwy 14, 32 NA at night.
▲ Autopilot coupled approach NA below 540 ft MSL.

MISSED APPROACH: Climb to 1800 then climbing left turn direct EWN VOR/DME and hold.

ASOS 118.525	CHERRY POINT APP CON 119.35 374.9	NEW BERN TOWER★ 124.25 (CTAF) 0	GND CON 121.7	CLNC DEL 121.7
------------------------	---	---	-------------------------	--------------------------



One Minute Holding Pattern	KATFI EW LOM 1056		1800	EWN
	4500 ← 219°	1400 → 039°	↻	☐
GS 3.00° TCH 50	1100	039°	3 NM	
CATEGORY	A	B	C	D
S-ILS 4		217-3/4	200 (200-3/4)	
S-LOC 4	420-1	403 (500-1)	420-1 1/8	403 (500-1 1/8)
CIRCLING	480-1 462 (500-1)	520-1 502 (600-1)	600-1 1/2 582 (600-1 1/2)	860-2 3/4 842 (900-2 3/4)

ELEV 18	TDZE 17
FAF to MAP 3 NM	
Knots	60 90 120 150 180
Min:Sec	3:00 2:00 1:30 1:12 1:00

SE-2, 22 FEB 2024 to 21 MAR 2024

SE-2, 22 FEB 2024 to 21 MAR 2024

WAAS CH 63002 W22A	APP CRS 219°	Rwy Idg TDZE Apt Elev	6153 17 18
--	------------------------	-----------------------------	---------------------------------------

RNAV (GPS) RWY 22

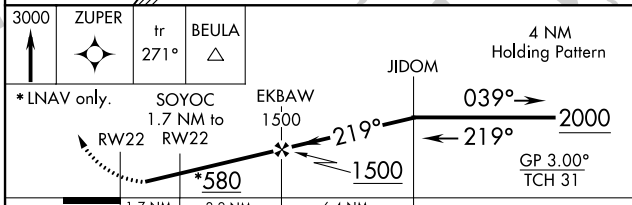
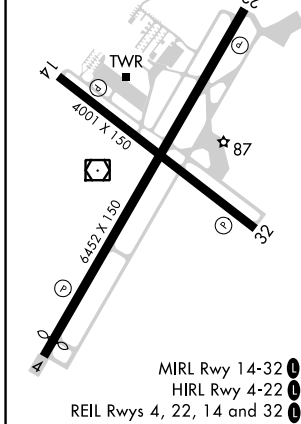
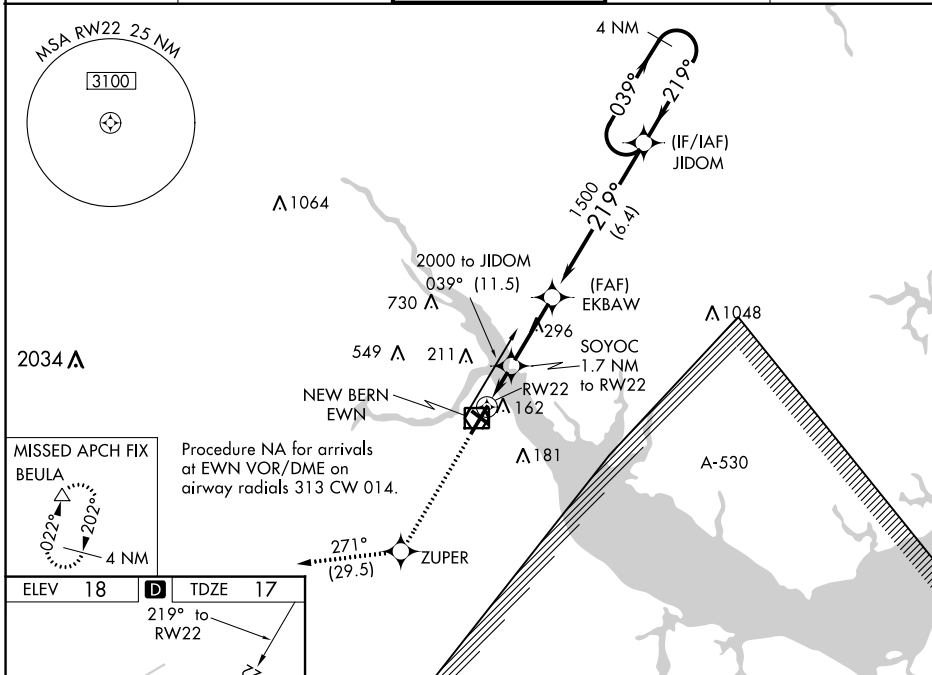
COASTAL CAROLINA RGNL (EWN)

RNP APCH.

⚠ Rwy 14, 32 helicopter visibility reduction below 1 SM NA. Rwy 22 helicopter visibility reduction below 3/4 SM NA. Circling Rwy 14, 32 NA at night. Baro-VNAV NA when using Cherry Point altimeter setting. For uncompensated Baro-VNAV systems, LNAV/VNAV NA below -15°C (5°F) or above 54°C (130°F). When local altimeter setting not received, use Cherry Point altimeter setting; increase all DA 32 feet and all MDA 40 feet. Increase LPV and LNAV/VNAV visibility 1/2 SM, and Circling Cat C/D visibility 1/2 SM.

⚠ MISSED APPROACH: Climb to 3000 direct ZUPER and on track 271° to BEULA and hold.

ASOS 118.525	CHERRY POINT APP CON 119.35 374.9	NEW BERN TOWER★ 124.25 (CTAF) 0	CLNC DEL 121.7	GND CON 121.7
------------------------	---	---	--------------------------	-------------------------



CATEGORY	A	B	C	D
LPV DA		269-7/8	252 (300-7/8)	
LNAV/VNAV DA		376-1 1/4	359 (400-1 1/4)	
LNAV MDA	480-1	463 (500-1)	480-1 3/8	463 (500-1 3/8)
C CIRCLING	480-1 462 (500-1)	520-1 502 (600-1)	600-1 1/2 582 (600-1 1/2)	860-2 3/4 842 (900-2 3/4)

SE-2, 22 FEB 2024 to 21 MAR 2024

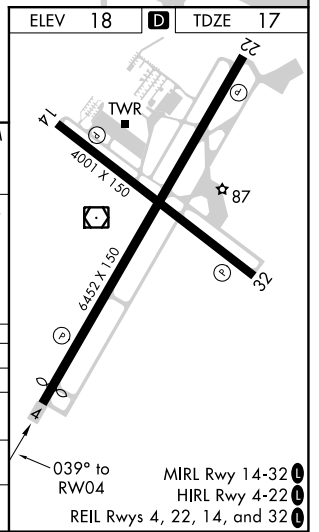
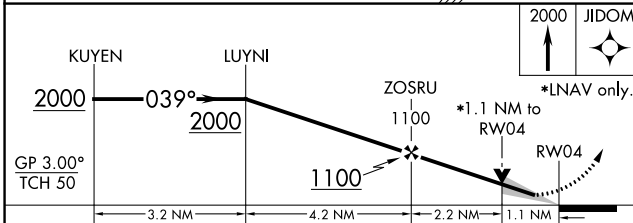
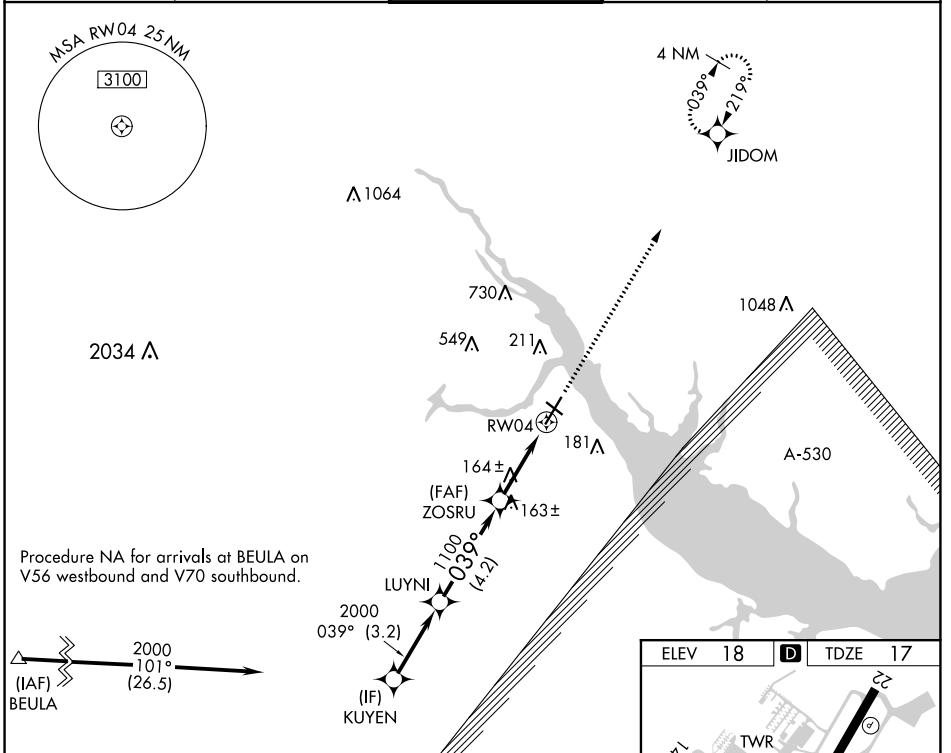
SE-2, 22 FEB 2024 to 21 MAR 2024

WAAS CH 69402 W04A	APP CRS 039°	Rwy Idg 5753 TDZE 17 Apt Elev 18
--	------------------------	---

RNAV (GPS) RWY 4

COASTAL CAROLINA RGNL (E'WN)

RNP APCH-GPS.		MISSED APPROACH: Climb to 2000 direct JIDOM and hold.	
ASOS 118.525	CHERRY POINT APP CON 119.35 374.9	NEW BERN TOWER ★ 124.25 (CTAF) 0	CLNC DEL 121.7
		GND CON 121.7	



GP 3.00° TCH 50	3.2 NM	4.2 NM	2.2 NM	1.1 NM
CATEGORY	A	B	C	D
LPV DA		217-3/4	200 (200-3/4)	
LNNAV/VNAV DA		441-1 1/4	424 (500-1 1/4)	
LNNAV MDA	420-1	403 (500-1)	420-1 1/8	403 (500-1 1/8)
CIRCLING	480-1 462 (500-1)	520-1 502 (600-1)	600-1 1/2 582 (600-1 1/2)	860-2 1/4 842 (900-2 1/4)

SE-2, 22 FEB 2024 to 21 MAR 2024

SE-2, 22 FEB 2024 to 21 MAR 2024

VOR/DME EWN 113.6 Chan 83	APP CRS 226°	Rwy Idg 6153 TDZE 17 Apt Elev 18
---	------------------------	---

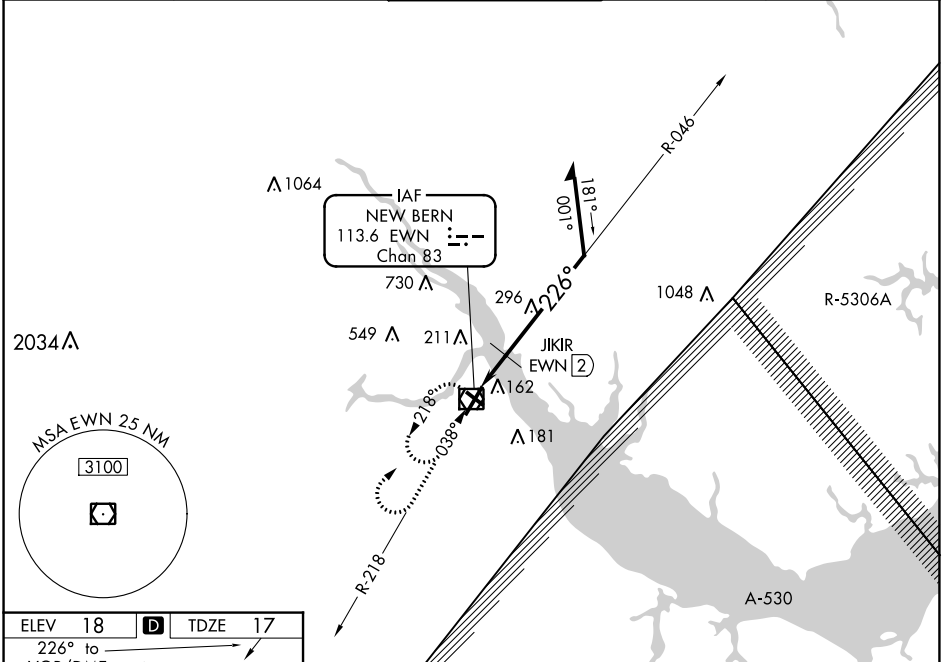
VOR RWY 22

COASTAL CAROLINA RGNL (EWN)

⚠ Rwy 14, 32 helicopter visibility reduction below 1 SM NA. Rwy 22 helicopter visibility reduction below 3/4 SM NA. Circling Rwy 14, 32 NA at night. JIKIR fix minimums:
⚠ S-22 Cat D minimums NA when using Cherry Point altimeter setting. When local altimeter setting not received, use Cherry Point altimeter setting and increase all MDAs 40 feet and Circling Cat D visibility 1/4 SM and JIKIR fix minimums Circling Cat C/D visibility 1/4 SM.

MISSED APPROACH: Climb to 1000 then climbing right turn to 2000 direct EWN VOR/ DME and hold, continue climb-in-hold to 2000.

ASOS 118.525	CHERRY POINT APP CON 119.35 374.9	NEW BERN TOWER ★ 124.25 (CTAF) 0	CLNC DEL 121.7	GND CON 121.7
------------------------	---	--	--------------------------	-------------------------



SE-2, 22 FEB 2024 to 21 MAR 2024

SE-2, 22 FEB 2024 to 21 MAR 2024

ELEV 18	D	TDZE 17
----------------	----------	----------------

226° to VOR/DME

MIRL Rwy 14-32
 HIRL Rwy 4-22
 REL Rws 4, 22, 14 and 32

1000	2000	EWN	EWN VOR/DME	Remain within 10 NM
------	------	-----	-------------	---------------------

6000

JKIR EWN 2

046°

1800

226°

600*

3.42°

TCH 55

2 NM

VGSI and descent angles not coincident (VGSI Angle 3.00/TCH 31).

*640 when using Cherry Point altimeter setting.

CATEGORY	A	B	C	D
S-22	600-1	583 (600-1)	600-1 3/4	583 (600-1 3/4)
C CIRCLING	600-1	582 (600-1)	600-1 3/4 582 (600-1 3/4)	860-2 3/4 842 (900-2 3/4)
JKIR FIX MINIMUMS (DME REQUIRED)				
S-22	480-1	463 (500-1)	480-1 3/8	463 (500-1 3/8)
C CIRCLING	480-1 462 (500-1)	520-1 502 (600-1)	600-1 1/2 582 (600-1 1/2)	860-2 3/4 842 (900-2 3/4)