

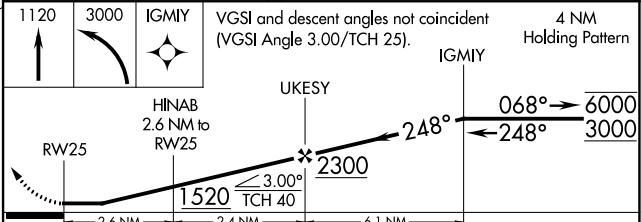
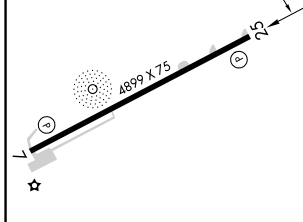
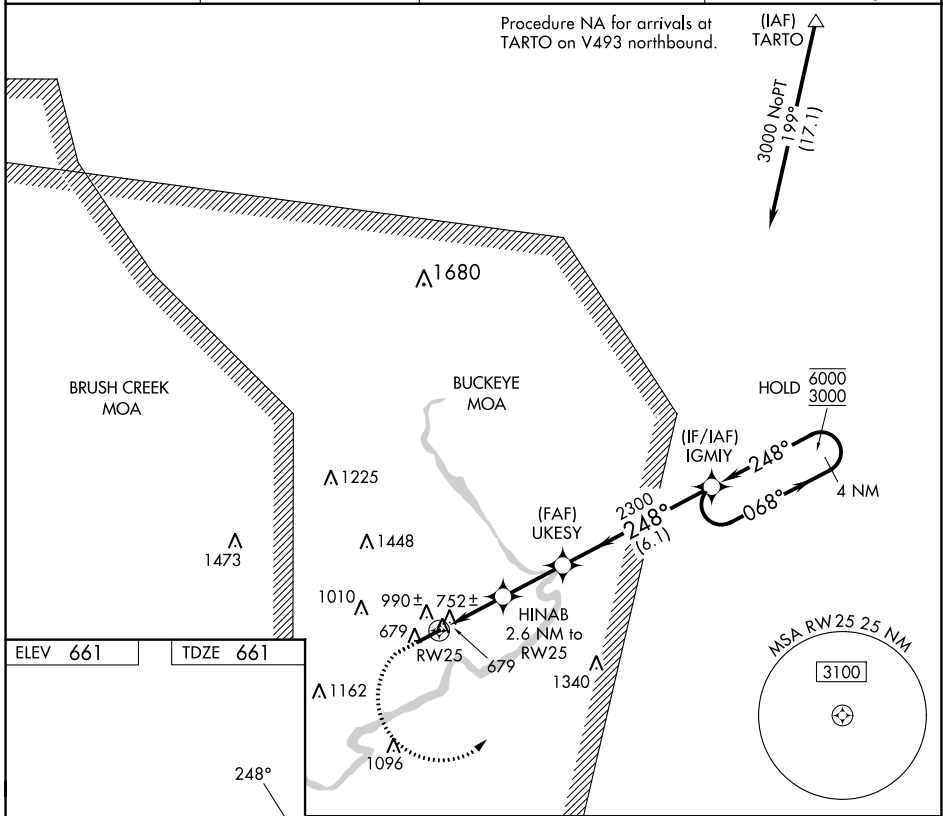
WAAS CH 97537 W25A	APP CRS 248°	Rwy Idg TDZE 661 Apt Elev 661	4899
--	------------------------	---	-------------

RNAV (GPS) RWY 25

PIKE COUNTY (EOP)

RNP APCH - GPS.	<p>▽ Rwy 25 helicopter visibility reduction below 3/4 SM NA. Circling Rwy 7 NA at night. Use Greater Portsmouth Rgnl altimeter setting; when not received, use Ross County altimeter setting.</p>	MISSED APPROACH: Climb to 1120 then climbing left turn to 3000 direct IGMYY and hold.
<p>△ NA</p>		

AWOS-3PT 121.45	PMH AWOS-3 125.175	INDIANAPOLIS CENTER 135.575 290.5	UNICOM 123.0 (CTAF)
---------------------------	------------------------------	---	-------------------------------



CATEGORY	A	B	C	D
LP MDA	1060-1	399 (400-1)	1060-1 1/8	399 (400-1 1/8)
LNAV MDA	1260-1	599 (600-1)	1260-1 3/4	599 (600-1 3/4)
☑ CIRCLING	1500-1 1/4 839 (900-1 1/4)	1520-1 1/4 859 (900-1 1/4)	1580-2 3/4 919 (1000-2 3/4)	1700-3 1039 (1100-3)

REIL Rwy 7 and 25 **①**
MIRL Rwy 7-25 **①**

WAVERLY, OHIO
Amdt 1B 07OCT21

39°10'N-82°56'W

RNAV (GPS) RWY 25

EC-2, 22 FEB 2024 to 21 MAR 2024

EC-2, 22 FEB 2024 to 21 MAR 2024

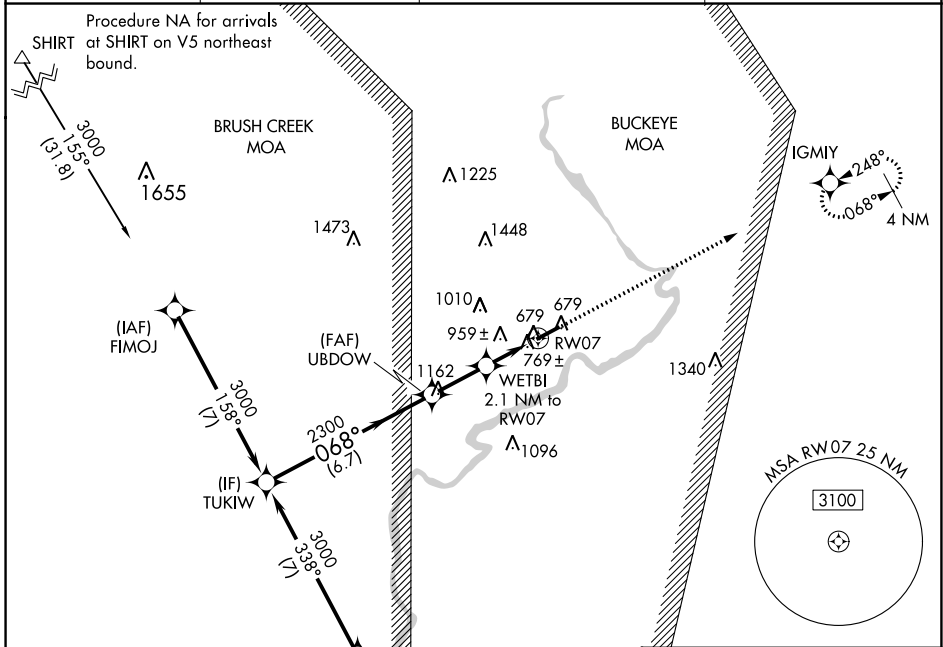
WAAS CH 56437 W07A	APP CRS 068°	Rwy Idg 4899 TDZE 661 Apt Elev 661
--	------------------------	---

RNAV (GPS) RWY 7

PIKE COUNTY (EOP)

RNP APCH - GPS	Rwy 7 helicopter visibility reduction below 1 SM NA. Use Greater Portsmouth Rgnl altimeter setting; when not received, use Ross County altimeter setting. Straight-in Rwy 7 NA at night, Circling Rwy 7 NA at night.	MISSED APPROACH: Climb to 3000 direct IGMIY and hold.
----------------	--	---

AWOS-3PT 121.45	PMH AWOS-3 125.175	INDIANAPOLIS CENTER 135.575 290.5	UNICOM 123.0 (CTAF) 0
---------------------------	------------------------------	---	---------------------------------



EC-2, 22 FEB 2024 to 21 MAR 2024

EC-2, 22 FEB 2024 to 21 MAR 2024

ELEV 661	TDZE 661
----------	----------

Visual Segment - Obstacles.	3000	IGMIY
TUKIW	UBDOW	WETBI
3000	2300	1480
6.7 NM	2.2 NM	2.1 NM
679 (700-1)	679 (700-1)	679 (700-1)
1500-1 1/4	1520-1 1/4	1580-2 3/4
839 (900-1 1/4)	859 (900-1 1/4)	919 (1000-2 3/4)
1080-1	419 (500-1)	1080-1 1/8
1340-1	679 (700-1)	1340-1 7/8
1700-3		1039 (1100-3)