

WAAS CH <b>77909</b>	APP CRS <b>W27A</b> 269°	Rwy Idg TDZE Apt Elev	<b>5503</b> <b>387</b> <b>387</b>
-------------------------	--------------------------------	-----------------------------	---

# RNAV (GPS) RWY 27

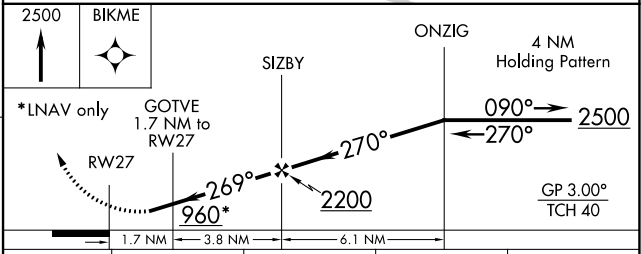
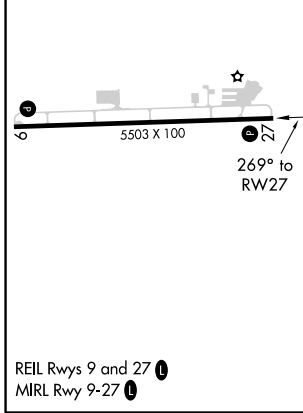
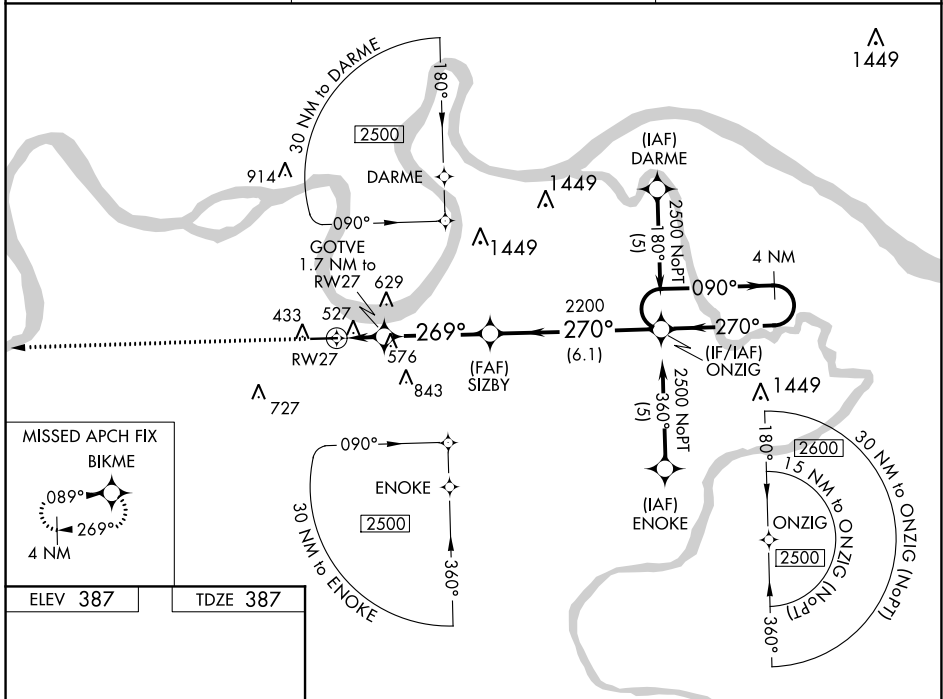
HENDERSON CITY-COUNTY (E.H.R.)

RNP APCH.

**⚠** Baro-VNAV NA when using Evansville altimeter setting. For uncompensated Baro-VNAV systems, LNAV/VNAV NA below -15°C or above 48°C. Rwy 27 helicopter visibility reduction below 3/4 SM NA. When local altimeter setting not received, use Evansville altimeter setting and increase all DA 41 feet and all MDA 60 feet and LPV all Cats, LNAV/VNAV all Cats and LNAV Cats C/D visibilities 1/4 mile.

MISSED APPROACH: Climb to 2500 direct BIKME and hold.

AWOS-3PT <b>118.85</b>	EVANSVILLE APP CON ★ <b>124.025 257.8</b>	UNICOM <b>122.8</b> (CTAF) <b>📻</b>
---------------------------	--	--



CATEGORY	A	B	C	D
LPV DA		733-1 1/4	346 (400-1 1/4)	
LNAV/VNAV DA		827-1 1/2	440 (500-1 1/2)	
LNAV MDA	840-1	453 (500-1)	840-1 3/8 453 (500-1 3/8)	840-1 1/2 453 (500-1 1/2)

SE-1, 19 MAY 2022 to 16 JUN 2022

SE-1, 19 MAY 2022 to 16 JUN 2022

# RNAV (GPS) RWY 9

HENDERSON CITY-COUNTY (E.H.R.)

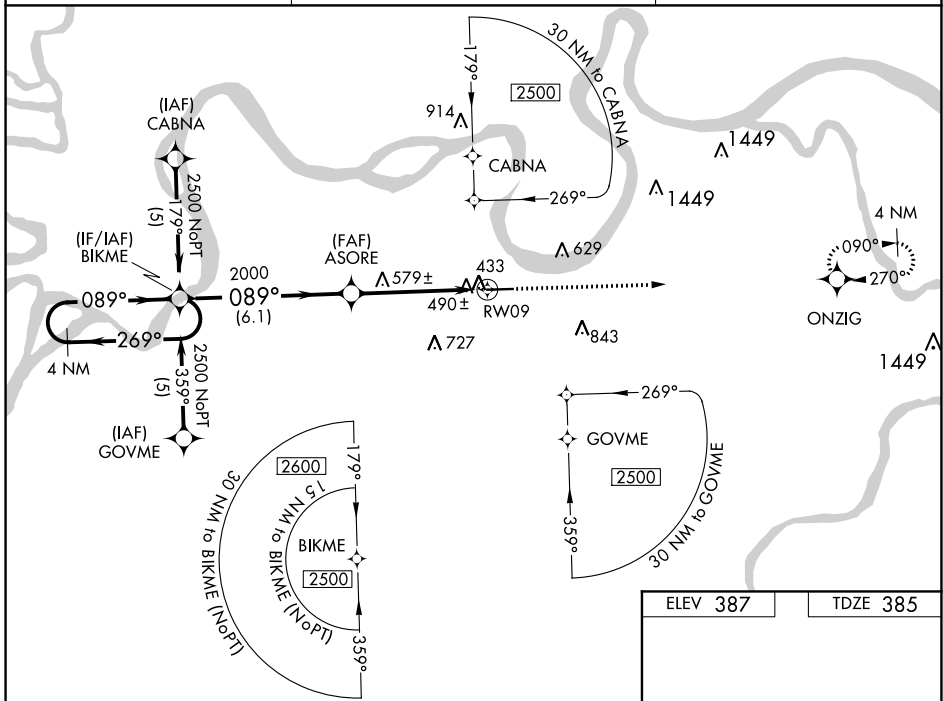
WAAS CH <b>97709</b> <b>W09A</b>	APP CRS <b>089°</b>	Rwy Idg TDZE Apt Elev	<b>5503</b> <b>385</b> <b>387</b>
--	------------------------	-----------------------------	---

RNP APCH.

**⚠** For uncompensated Baro-VNAV systems, LNAV/VNAV NA below -15°C or above 48° C. Rwy 9 helicopter visibility reduction below ¾ SM NA. Baro-VNAV and VDP NA when using Evansville altimeter setting. When local altimeter setting not received, use Evansville climeter setting and increase all DA 41 feet and all MDA 60 feet and LPV all Cats, LNAV/VNAV all Cats and LNAV Cats C/D visibilities ¼ mile.

**MISSED APPROACH:**  
Climb to 2500 direct ONZIG and hold.

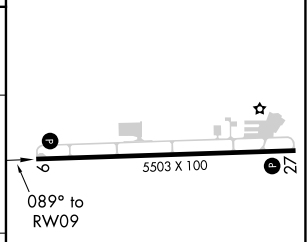
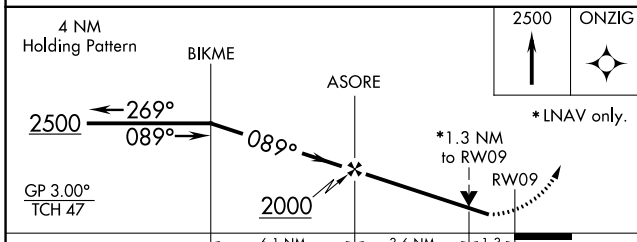
AWOS-3PT <b>118.85</b>	EVANSVILLE APP CON * <b>124.025 257.8</b>	UNICOM <b>122.8 (CTAF) 0</b>
---------------------------	--	---------------------------------



SE-1, 19 MAY 2022 to 16 JUN 2022

SE-1, 19 MAY 2022 to 16 JUN 2022

ELEV 387	TDZE 385
----------	----------



CATEGORY	A	B	C	D
LPV DA	694-1 309 (400-1)			
LNAV/VNAV DA	774-1¼ 389 (400-1¼)			
LNAV MDA	840-1 455 (500-1)	840-1⅜ 455 (500-1⅜)	840-1½ 455 (500-1½)	840-1½ 455 (500-1½)

REIL Rwy 9 and 27 **0**  
MIRL Rwy 9-27 **0**

VORTAC PXV <b>113.3</b> Chan <b>80</b>	APP CRS <b>150°</b>	Rwy Idg TDZE Apt Elev <b>N/A</b> <b>N/A</b> <b>387</b>
--	------------------------	---

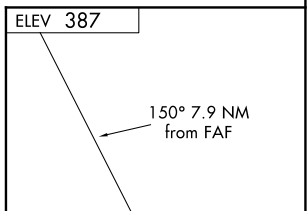
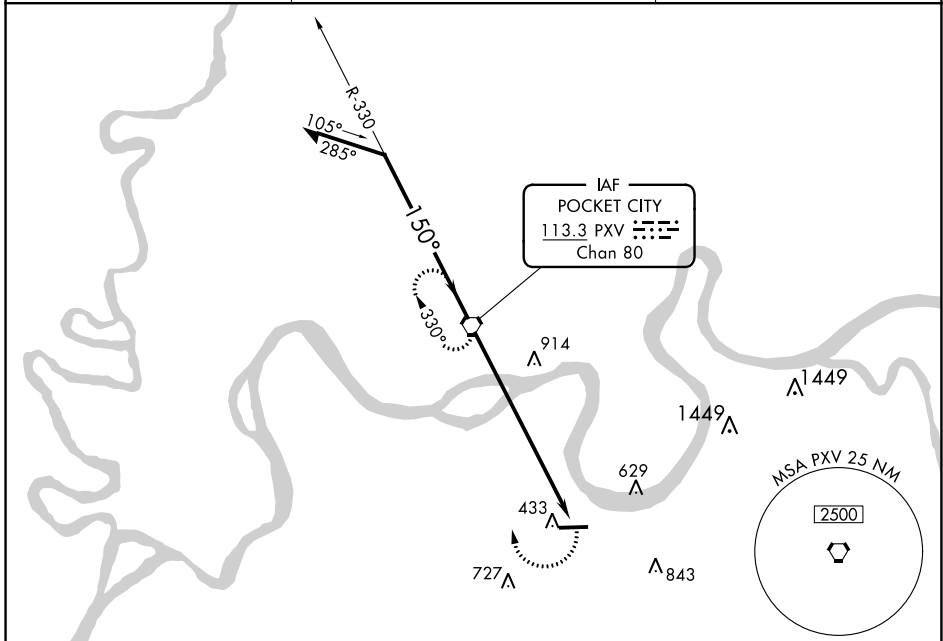
# VOR-A

HENDERSON CITY-COUNTY (EHR)

**NA** When local altimeter setting not received, use Evansville altimeter setting and increase all MDAs 80 feet, and increase Circling Cats C/D visibility ¼ SM.

MISSED APPROACH: Climbing right turn to 2100 direct PXV VORTAC and hold.

AWOS-3PT <b>118.85</b>	EVANSVILLE APP CON ★ <b>124.025 257.8</b>	UNICOM <b>122.8</b> (CTAF) <b>0</b>
---------------------------	--	--



CATEGORY	A		B		C		D		FAF to MAP 7.9 NM					
	920-1		533 (600-1)		1040-1¾ 653 (700-1¾)		1200-2¾ 813 (900-2¾)		Knots	60	90	120	150	180
CIRCLING									Min:Seq	7:54	5:16	3:57	3:10	2:38

HENDERSON, KENTUCKY					HENDERSON CITY-COUNTY (EHR)				
Amdt 10A 20MAY21					37°48'N-87°41'W				

# VOR-A

SE-1, 19 MAY 2022 to 16 JUN 2022

SE-1, 19 MAY 2022 to 16 JUN 2022