

WAAS CH <b>93804</b> <b>W18A</b>	APP CRS <b>176°</b>	Rwy ldg TDZE Apt Elev	<b>5201</b> <b>1277</b> <b>1277</b>
--	------------------------	-----------------------------	---

# RNAV (GPS) RWY 18

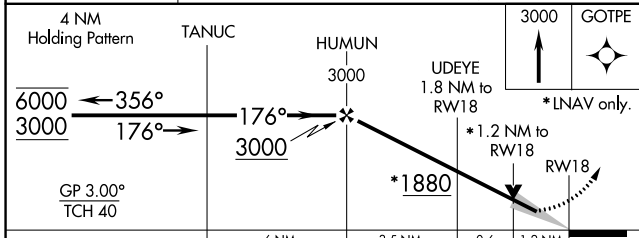
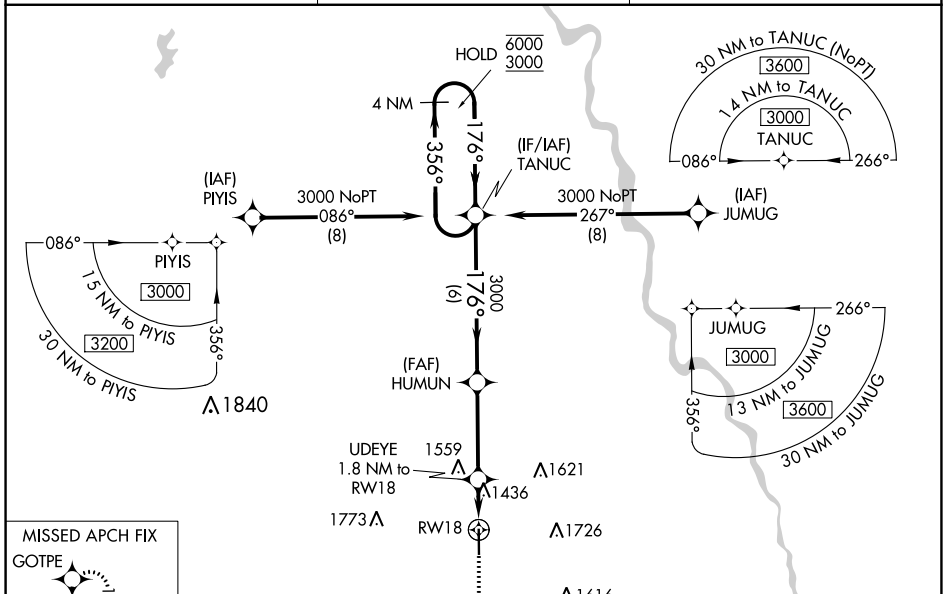
WELLINGTON MUNI (E.G.T)

RNP APCH.

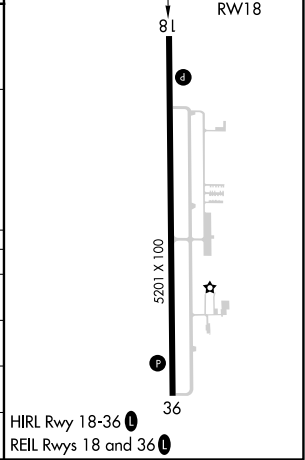
Baro-VNAV and VDP NA when using Wichita Dwight D Eisenhower NII altimeter setting. For uncompensated Baro-VNAV systems, LNAV/VNAV NA below -17°C or above 54°C. When local altimeter setting not received, use Wichita Dwight D Eisenhower NII altimeter setting: increase LPV DA to 1531 feet; increase LNAV/VNAV DA to 1776 feet; increase all MDAs 60 feet and LNAV Cats C/D visibility 1/8 SM and Circling Cats C/D visibility 1/4 SM.

MISSED APPROACH:  
Climb to 3000 direct  
GOTPE and hold.

AWOS-3P <b>118.875</b>	WICHITA APP CON <b>134.85</b>	UNICOM <b>122.8 (CTAF)</b>
---------------------------	----------------------------------	-------------------------------



ELEV 1277	TDZE 1277
-----------	-----------



CATEGORY	A	B	C	D
LPV DA	1477-1		200 (200-1)	
LNAV/VNAV DA	1722-1 3/8		445 (500-1 3/8)	
LNAV MDA	1700-1	423 (500-1)	1700-1 1/4	423 (500-1 1/4)
<b>C</b> CIRCLING	1760-1	483 (500-1)	2040-2 1/4 763 (800-2 1/4)	2140-2 3/4 863 (900-2 3/4)

NC-2, 16 JUN 2022 to 14 JUL 2022

NC-2, 16 JUN 2022 to 14 JUL 2022

WAAS CH <b>70504</b> <b>W36A</b>	APP CRS <b>356°</b>	Rwy Idg <b>5201</b> TDZE <b>1277</b> Apt Elev <b>1277</b>
--	------------------------	---

# RNAV (GPS) RWY 36

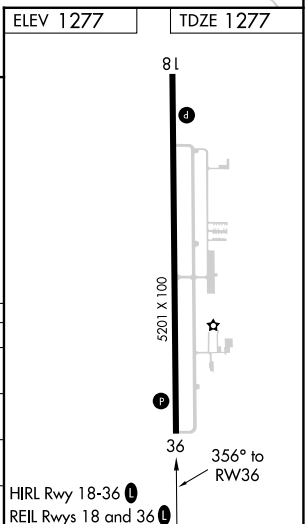
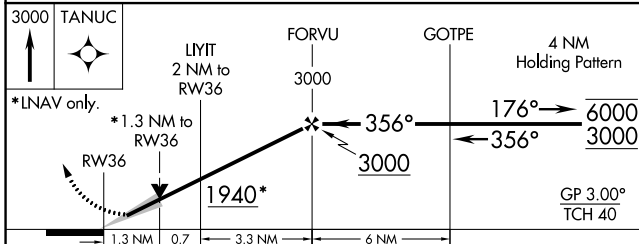
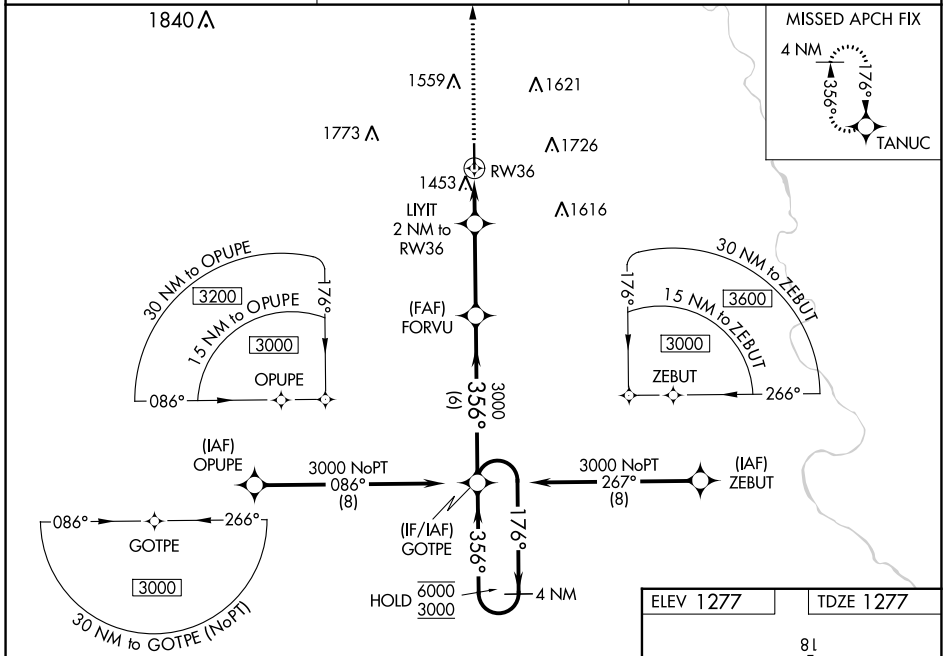
WELLINGTON MUNI (E/GT)

RNP APCH.

**NA** Baro-VNAV and VDP NA when using Wichita Dwight D Eisenhower Ntl altimeter setting. For uncompensated Baro-VNAV systems, LNAV/VNAV NA below -17°C or above 54°C. When local altimeter setting not received, use Wichita Dwight D Eisenhower Ntl altimeter setting: increase LPV DA to 1581 feet; increase LNAV/VNAV DA to 1668 feet and all visibilities 1/8 SM; increase all MDA 60 feet and Circling Cat C/D visibility 1/4 SM.

MISSED APPROACH: Climb to 3000 direct TANUC and hold.

AWOS-3P <b>118.875</b>	WICHITA APP CON <b>134.85</b>	UNICOM <b>122.8</b> (CTAF) <b>0</b>
---------------------------	----------------------------------	--



CATEGORY	A	B	C	D
LPV DA	1527-1		250 (300-1)	
LNAV/VNAV DA	1614-1		337 (400-1)	
LNAV MDA	1720-1	443 (500-1)	1720-1 3/8	443 (500-1 3/8)
<b>C</b> CIRCLING	1760-1	483 (500-1)	2040-2 1/4 763 (800-2 1/4)	2140-2 3/4 863 (900-2 3/4)

HIRL Rwy 18-36 **0**  
REIL Rwy 18 and 36 **0**

NC-2, 16 JUN 2022 to 14 JUL 2022

NC-2, 16 JUN 2022 to 14 JUL 2022